



Published in final edited form as:

Nat Commun. 2014 ; 5: 3286. doi:10.1038/ncomms4286.

Dynamic Localization of Electronic Excitation in Photosynthetic Complexes Revealed with Chiral Two-Dimensional Spectroscopy

Andrew F. Fidler¹, Ved P. Singh¹, Phillip D. Long², Peter D. Dahlberg², and Gregory S. Engel^{1,†}

¹ Department of Chemistry, Institute for Biophysical Dynamics, and The James Franck Institute, 929 East 57th Street, The University of Chicago, Chicago, Illinois 60637, USA

² Program in the Biophysical Sciences, 929 East 57th Street, Institute for Biophysical Dynamics, The University of Chicago, Chicago, IL 60637

Abstract

Time-resolved ultrafast optical probes of chiral dynamics provide a new window allowing us to explore how interactions with such structured environments drive electronic dynamics. Incorporating optical activity into time-resolved spectroscopies has proven challenging due to the small signal and large achiral background. Here, we demonstrate that two-dimensional electronic spectroscopy can be adapted to detect chiral signals and that these signals reveal how excitations delocalize and contract following excitation. We dynamically probe the evolution of chiral electronic structure in the light harvesting complex 2 of purple bacteria following photoexcitation by creating a chiral two-dimensional mapping. The dynamics of the chiral two-dimensional signal directly reports on changes in the degree of delocalization of the excitonic state following photoexcitation. The mechanism of energy transfer in this system may enhance transfer probability due to the coherent coupling among chromophores while suppressing fluorescence that arises from populating delocalized states. This generally applicable spectroscopy will provide an incisive tool to probe ultrafast transient molecular fluctuations that are obscured in non-chiral experiments.

Introduction

The handed arrangement of pigments in photosynthetic antenna complexes induces optical chirality, manifested through the difference in absorbance of left- versus right-circularly polarized light. Optical activity provides an exquisite probe of electronic and molecular structure, due to its sensitivity to minute structural details.¹ Microscopically, optical chirality arises from corkscrew-like motion of electrons after excitation belying asymmetric

Users may view, print, copy, download and text and data- mine the content in such documents, for the purposes of academic research, subject always to the full Conditions of use: http://www.nature.com/authors/editorial_policies/license.html#terms

[†]To whom correspondence should be addressed. gsengel@uchicago.edu.

Author contributions: A.F.F. and G.S.E. designed research; A.F.F., V.P.S., P.D.L., and P.D.D. performed research; A.F.F. analyzed data; and A.F.F. and G.S.E. wrote the paper. All authors commented on the manuscript.

Competing financial interests

The authors declare no financial interests.

interactions of the electron with its environment.²⁻⁴ Femtosecond and time-resolved measurements of optical activity represent a frontier for understanding functional materials and chemical dynamics.⁵⁻⁸ In photosynthetic complexes, transient fluctuations in the protein scaffold cause chiral optical response to change following photoexcitation as the delocalization length of the exciton dynamically contracts.⁹⁻¹¹ However, signal strengths orders of magnitude smaller than the achiral background frustrate attempts to create a complete map correlating chiral response and dynamics.

The light harvesting complex 2 (LH2) of *Rhodobacter sphaeroides* is the peripheral photosynthetic antenna complex in purple bacteria. Structurally, the complex contains two concentric rings of bacteriochlorophyll *a* chromophores held in place by non-covalent interactions with the surrounding protein scaffold.¹² The rings are referred to as the B850 and B800 due to their pronounced absorption bands in the near-infrared. Excitations flow from the B800 states into the B850 states on a 700 fs time scale at room temperature.¹³ Nine carotenoid chromophores are additionally intertwined through the complex and can act as excitation donors to the bacteriochlorophyll chromophores, with energy transfer proceeding on a sub 100 fs time scale.¹⁴ The electronic structure and energy transfer dynamics of the two rings of chromophores have been intensely studied¹⁵⁻¹⁷ and the precise nature of excitations in the system and their dynamics are currently debated in the literature. In particular, the coherence length (or delocalization length)¹⁸ has been interrogated through a variety of experimental methods.^{9,10,19,20} Single molecule experiments have definitively revealed the delocalized nature of states within the B850 ring arising from the close packing and resultant strong interactions between pigments.²¹ The two prominent electronic states within the 850 nm band largely correspond to $k = \pm 1$ excitations on the B850 ring, which semi-classically correspond to excitations traveling in different directions around the ring.¹¹ Due to the presence of disorder, higher order k states will additionally be weakly optically active and may contribute to the response. However, interactions between chromophores in the B800 ring are on the order of the disorder in site energies and consequently the electronic structure of these states remains less clear.²²⁻²⁵

Here, we report a chiral two-dimensional (C2D) mapping that allows us to dynamically probe evolution of chiral electronic structure in the light harvesting complex 2 (LH2) of purple bacteria following photoexcitation. We observe fast protein motions that induce collapse of the electronic wave packet on a femtosecond timescale and thereby suppress memory of the initial chiral response. The ability of two-dimensional methods to separate energy transfer events into cross peaks allows direct visualization of transfer between delocalized states.^{24,26} We present two complementary C2D experiments where the chiral sensitivity is incorporated into the pump or probe portion of the excitation pulse sequence. We observe that the relaxation dynamics change for the different chiral experiments which reflect the complex relaxation dynamics of the delocalized excitons. These experiments are sensitive to the effective size of the delocalized state, which allows us to gain insight into the complex relaxation dynamics.

Results

Molecular Origins of the Chiral Response

To probe the chiral response of LH2, we employ a variant of two-dimensional electronic spectroscopy (2DES).^{27,28} In 2DES experiments, a series of three precisely timed femtosecond pulses interrogates the system. By varying the time delay between the first two pulses, two-dimensional frequency-frequency correlation maps can be generated as a function of the waiting time, T , between the second and third pulse. The frequency-frequency maps, interpreted simply, correlate an absorption axis, λ_{τ} , with an emission axis, λ_{ν} . By varying the waiting time, we probe dynamics of the system following excitation. Because the experiment involves multiple interactions between the system and the laser field, several unique chiral experiments are possible. By controlling the relative polarization of the incoming pulses, we selectively measure a chiral tensor element while eliminating the stronger achiral contributions.^{2,29} Formally, our scheme depicted in Figure 1 yields a spectrum proportional to measuring the difference in nonlinear response after excitation with left- versus right-circularly polarized light.³⁰ Similar strategies have been experimentally realized in the infrared region of the spectrum for both linear⁷ and second-order experiments.²⁹

Here, we probe the chirality of the electronic structure either during the pump sequence or during the probe sequence, which we will refer to as “chiral pump” and “chiral probe”. These, respectively, refer to the polarization sequences where the polarization of the first pulse is orthogonal to the subsequent two pulses and signal field for the chiral pump sequence (YXXX), and when the polarization of the third pulse is orthogonal to the other pump pulses and signal field for the chiral probe signal (XXYX). Here the polarization of the three linearly polarized excitation beams and the polarization of the resultant signal are listed in order from left to right (1,2,3, local oscillator / signal). The chiral pump sequence allows us to track differences in the dynamics of initially prepared chiral sub-populations. The chiral probe experiments detect the presence of chiral response following photoexcitation. The resultant signal field from LH2 for both these experiments is three orders of magnitude smaller than the dipole allowed transitions in a typical 2D spectrum of LH2. To detect the weak chiral signals, we utilize a multiplexed variant of 2DES called GRADIENT ASSISTED PHOTON ECHO SPECTROSCOPY (GRAPES).³¹ GRAPES spatially encodes the first time delay across a homogeneous sample to allow two-dimensions of data to be acquired in parallel. The resulting speed-up in acquisition time allows us to average many acquisitions while avoiding noise in the indirect domain which significantly enhances our signal-to-noise ratio. Complete details of the experimental apparatus and experimental controls can found in the methods section and accompanying Supplementary Figures.

The overall intensity of the signal in an optical activity experiment is related to the rotational strength, which, for many systems (including the LH2 complex) can be expressed as:

$$R = \text{Im}(\vec{\mu} \cdot \vec{m}),$$

where $\vec{\mu}$ is the electric transition dipole moment and \vec{m} is the magnetic transition dipole. The helical motion of excitations around the rings of LH2 induces a magnetic transition dipole moment that provides the dominant contribution to the optical activity.²⁻⁴ The precise orientation of the constituent chromophores and their interaction energies dictates the optical response and reproduces the CD spectra of LH2 complexes.³² Because the chiral signal arises from the corkscrew-like motions of the electrons induced by the strong interactions between chromophores and their environment, these measurements probe the delocalized nature of the electronic structure around the ring. Similarly, superradiance, exchange narrowing, circular dichroism, and aspects of the non-linear optical responses can also report on the degree of delocalization.^{10,20,32-35} Control experiments conducted on a small dye molecule yielded signal over an order of magnitude smaller than LH2 at similar optical densities, indicating that the predominant contribution to the optical response in LH2 arises from collective excitations (details on the experimental controls can be found in the methods and Supplementary Information section).

Zero Waiting Time Chiral Response

The experimental results for T=0 fs are shown in Figure 2. The C2D maps can be interpreted in a similar manner as the regular 2DES maps, except that in C2D one of the two frequency axes reflects the differential absorbance between left and right circularly polarized light. In the absence of dynamics that alters the electronic structure (such as at T=0 fs), we expect the C2D lineshapes along the chiral pump and chiral probe measurement axes in our complementary experiments to coincide, reflecting that the same states are being interrogated. Slices taken through the chiral axis in the 850 nm band at T=0 fs illustrate this effect: a horizontal slice in the chiral pump spectrum and a vertical slice in the chiral probe spectrum match one another. In both cases, we see that the biphasic behavior characteristic of circular dichroism¹ manifests in the chiral dimension of the 2D map. The two features largely correspond to the $k = \pm 1$ excitations of the inner B850 ring. Additional contributions from the higher order k states also contribute to this signal. The good agreement between the features at early waiting times verifies the chiral origin of the signal. A similar analysis of the 800 nm feature can be found in Supplementary Figure 1.

Dynamics of Chiral Response

We monitor how optical activity evolves following excitation by acquiring a series of C2D spectra while varying the waiting time. The temporal evolution of the C2D spectral features is displayed in figure 3. C2D spectra at many different waiting times are shown in Supplementary Figures 2 and 3 for the chiral pump and probe experiments. The diagonal features in the chiral pump and chiral probe data show time scales similar to the known energy transfer dynamics, and much of the corresponding dynamics can be rationalized within the current understanding of the disordered exciton model of the electronic dynamics in LH2.¹⁵⁻¹⁷ For the chiral pump sequences we observe a fast 80 fs decay within both the 800 nm and 850 nm diagonal. Along with the rapid initial decay, the 800 nm feature also shows a slower 600-700 fs decay. While the 800 nm diagonal feature only broadens and decays, the 850 nm diagonal feature additionally shifts below the diagonal with increasing waiting time, reflecting the known Stokes shift of this band.²⁰ This fast decay component is

not present in chiral probe spectra and reflects the internal dynamics of the subpopulation of initially prepared chiral states. The fast decay of the 850 nm region has been previously observed and prescribed to localization of the exciton.^{9,18,36,37} Localization arises due to excitonic relaxation³⁷ as well as strong coupling to the bath, which causes the mixing between the excited states to be dependent on the nuclear degrees of freedom.^{9,18} Concurrent with this fast initial decay, we observe a loss in the biphasic response characteristic of optical activity measurements. The rapid loss of the biphasic response is shown in Figure 4. The blue edge of the traces in the 800 nm region for the chiral pump traces arise from energy transfer within the 800 nm band and decay on slower 500-700 fs timescale while the red edge shows a rapid decay. The loss of the biphasic response reflects relaxation and scattering events that cause the memory of the chiral structure to be lost following excitation, resulting from interactions with the protein bath. Semi-classically, the wave packet scatters and reflects thereby losing knowledge of its initial angular momentum.

At longer waiting times in both sets of C2D spectra, a cross peak appears on the same 500-700 fs time scale observed in traditional 2DES (all-parallel polarization); this feature results from downhill energy transfer between the two rings. The presence of the cross peak in the chiral probe measurement provides direct evidence that the acceptor state in the energy transfer process is delocalized. Energy transfer between the B800 ring and delocalized states on the B850 ring most likely arises from a cooperative excitation energy transfer (supertransfer) mechanism, which is also referred to as generalized Förster theory.²⁴⁻²⁶ This collective relaxation process can enhance the energy transfer rate when compared to an incoherent hopping process between localized states.^{24,26} The enhancement is given by a multiplicative factor proportional to the number of chromophores over which the excitation is delocalized. While such a delocalized state could arise from mixing instead of through dipolar couplings in generalized Förster theory, no experimental evidence exists for mixing between the electronic states of the B800 and B850 rings. Single molecule studies on the fluorescent properties of LH2 complexes, which are particularly sensitive to the detailed nature of the electronic states, are well modeled without the inclusion of mixing between excited states of the two rings.^{21,22} The relaxation process between the rings has been shown to have a coherent contribution that persists at room temperature.³⁸ Recent single molecule studies, which are not inhibited by disorder, have further revealed that this coherent contribution lasts for at least 400 fs at ambient temperatures.³⁹ Furthermore, the single molecule studies demonstrated weak-field phase control of the excitation energy transfer process, demonstrating that quantum interference effects contribute to the overall transfer efficiency. The precise pathway of energy transfer through LH2 likely varies from complex to complex due to inhomogeneity.^{25,37,39} Such differences are not resolvable with our ensemble measurement.

The signal in the 800 nm region is significantly enhanced relative to the 850 nm region in the chiral pump data. This enhancement reflects the higher density of states present in the 800 nm region, arising from both B800 states and higher lying B850* states.²⁵ Calculations indicate that even though the absorption is roughly equal between the two bands, the density of states in the 800 nm region is roughly twice as large.²⁵ The signal in the 800 nm region rapidly broadens on an 80 fs timescale, reflecting equilibration of the electronic structure within the B800 chromophores. In the chiral probe data, the 800 nm feature shows a weak

but persistent signal that decays on a 340 fs time scale, faster than the 700 fs dynamics observed in the traditional 2DES experiments. Coherences among the B800 chromophores have been measured to dephase on a 180 fs time scale at room temperature in an ensemble measurement.⁴⁰ Due to the inhomogeneity the coherence lifetime is expected to vary from complex to complex due to the differing shared character and relaxation dynamics of the electronic states.^{37,41,42} The chiral signal may be reporting on a sub-ensemble of more delocalized states, which theory would expect to have enhanced coherence lifetimes. Hence, this decay may report on the collapse of coherence within a sub-ensemble of LH2 complexes. Alternatively, the 340 fs decay could arise from a different physical phenomenon. This data indicates that state coherence within the B800 chromophores cannot be neglected in describing the optical properties of the B800 chromophores. Similarly, the 850 nm diagonal feature decays on a slower 400 fs time scale in the chiral probe data, as can be seen in figures 3 and 4. Detailed modeling of the chiral signal will be required to reveal the origin of these slower decays.

Discussion

Chiral spectroscopic measurements provide an incisive tool for studying the structure and dynamics of molecular species. Extension of chiral sensitivity to multidimensional spectroscopy permits direct detection of delocalized states in the B800 band of LH2 at short times. Due to relaxation following photoexcitation, the excitonic wave packet rapidly collapses. Such dynamic localization may play a functional role in the light harvesting process. While transfer between collective delocalized states is enhanced due to supertransfer, the corresponding recombination rate of a delocalized state is similarly enhanced. Hence, long-lived delocalized collective excitations would be detrimental to the overall efficiency of transfer due to the increased radiative recombination. The collapse in the size of the acceptor state allows the benefits of enhanced transfer to be realized without the corresponding increase in loss.

This chiral two-dimensional method is generally applicable to isotropic media that exhibit a dipolar response, including at infrared wavelengths. Due to the low signal strength and corresponding long acquisition times, typical circular dichroism experiments only inform about equilibrium configurations.⁷ C2D instead probes the change in the chiral structure following photoexcitation, allowing for non-equilibrium photo-activated states to be directly monitored in the visible or infrared. Incorporation of temperature jump⁴³ or actinic pulses⁴⁴ could further drive the system out far of equilibrium to allow for longer time scale conformational changes to be observed. The inherent time resolution of C2D is limited by the lifetime of the free induction decay of the excited state, which is typically on the order of 50 fs at room temperature. The high temporal resolution and structural resolution provided by C2D makes it an incisive tool for studying photochemical reactions, where fast dynamics and broad spectral line shapes typically complicate their measurement.

Methods

Spectroscopic Apparatus and Data Analysis

Complete details of the GRAPE optical apparatus and laser system has been published previously.^{31,45} The output of an oscillator seeded regenerative amplifier was focused into a sealed tube of argon at ~ 1.3 atm, generating a spectrally broadened pulse centered at ~800 nm with ~100 nm FWHM. The laser spectrum is shown in Supplementary Figure 4, along with the absorption spectrum of LH2. The resultant pulse was compressed using a multi-pulse intrapulse interference phase scan (MIIPS) Box 640 system (Biophotonics Solutions), a spatial light modulator based pulse shaper, to ~15 fs FWHM, as confirmed through a MIIPS scan⁴⁶ and TG-FROG⁴⁷ measurements performed at the sample position. The LH2 complex from *Rhodobacter sphaeroides* was isolated as previously described.⁴⁸ Additional purification was achieved through a DEAE-Sepharose column with 500-600 mM NaCl eluent. The sample concentration used yielded an optical density of ~0.18 at 800 nm in a 200 μm flow cell. The pulse energy was 140 nj per pulse, resulting in a flux of 42 $\mu\text{j}/\text{cm}^2$.

The GRAPE apparatus was modified by the inclusion of three half-wave plates into beams 1-3, which allows for the complete control the of the polarization pulse sequence. The polarization was calibrated at the sample location with a Glan-Thompson polarizer prior to each experiment, using the polarization of beam 4 as a reference. The extinction ratios for the half-wave plates were measured to be $\sim 10^{-5}$, which is less than the observed signal strength. Due to the shallow incoming angles of the four pulses, small contributions from dipole allowed transitions will also contribute to the response. Separately acquired data on the non-resonant response from fused silica and the laser dye IR144 yielded signals smaller by a factor of ~50 from the signal observed in LH2. Shown in Supplementary Figure 5 is the all parallel polarization and chiral pump data of the laser dye IR144. Additionally, the individual spectra and corresponding dynamics of the chiral response in LH2 are different then the all parallel polarization scheme, which is the leading order contribution of the dipole allowed response. We thus conclude that the dominant contribution to the signal arises from the chiral tensor elements and not competing dipole allowed signals.

The signal was integrated for 2 seconds on the charge-coupled device detector and two averages were taken per scan. Relative signal intensities quoted in the text refer to comparisons of the signal intensity, when correcting for differing exposure times, of the phased chiral data and all parallel polarization taken back to back and at the same point in the 2D spectrum. The uncertainty in these numbers is large, since the power stability of our light source is ~ 0.6 % standard deviation over mean, which is significantly greater than the chiral signal. The ability to measure the chiral tensor element independently relieves the need for extremely high power stability. Scatter subtraction and data analysis proceeds as previously described.⁴⁹ Images of the processed chiral and all parallel polarization data are shown in Supplementary Figure 6 with the absolute signal strength. The difference in signal intensity between the chiral and non-chiral data is the same order of magnitude of the difference between the optical absorbance and circular dichroism spectra.³²

To phase the data, separately acquired all parallel polarization data was taken and phased to spectrally resolved transition absorption data.^{45,50} The pump-probe projections and all

parallel 2D spectra are shown in Supplementary Figure 7. The 2D spectra are in good agreement with 2D experiments on the related light harvesting complex 3.⁵¹ The resulting phasing parameters were then used to phase the chiral response, which was taken immediately after the all parallel polarization data. The reported data was qualitatively reproducible on different days with different alignments.

Supplementary Material

Refer to Web version on PubMed Central for supplementary material.

Acknowledgements

The authors would like to thank NSF MRSEC (DMR 08-02054), AFOSR (FA9550-09-1-0117), the DARPA QuBE program (N66001-10-1-4060), and the Searle Foundation for partially supporting this work. A.F.F and P.D.L. acknowledge support from the DOE SCGF program. P.D.D. was supported by the Graduate Program in Biophysical Sciences at the University of Chicago (National Institutes of Health grant T32 EB009412).

References

1. Berova, N.; Nakanishi, K.; Woody, RW. *Circular Dichroism: Principles and Applications*. 2nd Edition. Wiley-VCH; 2000.
2. Choi JH, Cheon S, Lee H, Cho M. Two-dimensional nonlinear optical activity spectroscopy of coupled multi-chromophore system. *Phys. Chem. Chem. Phys.* 2008; 10:3839–3856. [PubMed: 18688382]
3. Abramavicius D, Mukamel S. Chirality-induced signals in coherent multidimensional spectroscopy of excitons. *J. Chem. Phys.* 2006; 124:034113. [PubMed: 16438573]
4. Abramavicius D, Voronine DV, Mukamel S. Unravelling coherent dynamics and energy dissipation in photosynthetic complexes by 2D spectroscopy. *Biophys. J.* 2008; 94:3613–3619. [PubMed: 18192357]
5. Clarke DT, Doig AJ, Stapley BJ, Jones GR. The alpha-helix folds on the millisecond time scale. *Proc. Natl. Acad. Sci. U. S. A.* 1999; 96:7232–7237. [PubMed: 10377397]
6. Niezborala C, Hache F. Conformational changes in photoexcited (R)-(+)-1,1'-Bi-2-naphthol studied by time-resolved circular dichroism. *J. Am. Chem. Soc.* 2008; 130:12783–12786. [PubMed: 18761450]
7. Rhee HJ, et al. Femtosecond characterization of vibrational optical activity of chiral molecules. *Nature.* 2009; 458:310–313. [PubMed: 19295604]
8. Eom I, Ahn SH, Rhee H, Cho M. Single-Shot Electronic Optical Activity Interferometry: Power and Phase Fluctuation-Free Measurement. *Phys. Rev. Lett.* 2012; 108:103901. [PubMed: 22463408]
9. Book LD, Ostafin AE, Ponomarenko N, Norris JR, Scherer NF. Exciton delocalization and initial dephasing dynamics of purple bacterial LH2. *J. Phys. Chem. B.* 2000; 104:8295–8307.
10. Dahlbom M, Pullerits T, Mukamel S, Sandstrom V. Exciton delocalization in the B850 light-harvesting complex: Comparison of different measures. *J. Phys. Chem. B.* 2001; 105:5515–5524.
11. Meier T, Zhao Y, Chernyak V, Mukamel S. Polarons, localization, and excitonic coherence in superradiance of biological antenna complexes. *J. Chem. Phys.* 1997; 107:3876–3893.
12. McDermott G, et al. Crystal-structure of an integral membrane light-harvesting complex from photosynthetic bacteria. *Nature.* 1995; 374:517–521.
13. Hess S, et al. Femtosecond energy-transfer within the LH2 peripheral antenna of the photosynthetic purple bacteria *Rhodobacter sphaeroides* and *Rhodospseudomonas palustris* LL. *Chem. Phys. Lett.* 1993; 216:247–257.
14. Krueger BP, Scholes GD, Jimenez R, Fleming GR. Electronic excitation transfer from carotenoid to bacteriochlorophyll in the purple bacterium *Rhodospseudomonas acidophila*. *J. Phys. Chem. B.* 1998; 102:2284–2292.

15. Cogdell RJ, Gall A, Kohler J. The architecture and function of the light-harvesting apparatus of purple bacteria: from single molecules to in vivo membranes. *Q. Rev. Biophys.* 2006; 39:227–324. [PubMed: 17038210]
16. Sundstrom V, Pullerits T, van Grondelle R. Photosynthetic light-harvesting: Reconciling dynamics and structure of purple bacterial LH2 reveals function of photosynthetic unit. *J. Phys. Chem. B.* 1999; 103:2327–2346.
17. van Grondelle R, Novoderezhkin VI. Energy transfer in photosynthesis: experimental insights and quantitative models. *Phys. Chem. Chem. Phys.* 2006; 8:793–807. [PubMed: 16482320]
18. Meier T, Chernyak V, Mukamel S. Multiple exciton coherence sizes in photosynthetic antenna complexes viewed by pump-probe spectroscopy. *J. Phys. Chem. B.* 1997; 101:7332–7342.
19. Chachisvilis M, Kuhn O, Pullerits T, Sundstrom V. Excitons in photosynthetic purple bacteria: Wavelike motion or incoherent hopping? *J. Phys. Chem. B.* 1997; 101:7275–7283.
20. Monshouwer R, Abrahamsson M, van Mourik F, van Grondelle R. Superradiance and exciton delocalization in bacterial photosynthetic light-harvesting systems. *J. Phys. Chem. B.* 1997; 101:7241–7248.
21. van Oijen AM, Ketelaars M, Kohler J, Aartsma TJ, Schmidt J. Unraveling the electronic structure of individual photosynthetic pigment-protein complexes. *Science.* 1999; 285:400–402. [PubMed: 10411501]
22. Hofmann C, et al. Single-molecule study of the electronic couplings in a circular array of molecules: Light-harvesting-2 complex from *Rhodospirillum rubrum*. *Phys. Rev. Lett.* 2003; 90:013004. [PubMed: 12570608]
23. Cheng YC, Silbey RJ. Coherence in the B800 ring of purple bacteria LH2. *Phys. Rev. Lett.* 2006; 96:028103. [PubMed: 16486648]
24. Jang SJ, Newton MD, Silbey RJ. Multichromophoric Forster resonance energy transfer. *Phys. Rev. Lett.* 2004; 92:218301. [PubMed: 15245322]
25. Scholes GD, Fleming GR. On the mechanism of light harvesting in photosynthetic purple bacteria: B800 to B850 energy transfer. *J. Phys. Chem. B.* 2000; 104:1854–1868.
26. Lloyd S, Mohseni M. Symmetry-enhanced supertransfer of delocalized quantum states. *New J. Phys.* 2010; 12:075020.
27. Jonas DM. Two-dimensional femtosecond spectroscopy. *Annu. Rev. Phys. Chem.* 2003; 54:425–463. [PubMed: 12626736]
28. Cho MH. Coherent Two-Dimensional Optical Spectroscopy. *Chem. Rev.* 2008; 108:1331–1418. [PubMed: 18363410]
29. Belkin MA, Kulakov TA, Ernst KH, Yan L, Shen YR. Sum-frequency vibrational spectroscopy on chiral liquids: A novel technique to probe molecular chirality. *Phys. Rev. Lett.* 2000; 85:4474–4477. [PubMed: 11082574]
30. Choi JH, Cho MH. Quadrupole contribution to the third-order optical activity spectroscopy. *J. Chem. Phys.* 2007; 127:024507. [PubMed: 17640137]
31. Harel E, Fidler AF, Engel GS. Real-time mapping of electronic structure with single-shot two-dimensional electronic spectroscopy. *Proc. Natl. Acad. Sci. U. S. A.* 2010; 107:16444–16447. [PubMed: 20810917]
32. Georgakopoulou S, et al. Absorption and CD spectroscopy and modeling of various LH2 complexes from purple bacteria. *Biophys. J.* 2002; 82:2184–2197. [PubMed: 11916874]
33. Knapp EW. Lineshapes of molecular aggregates - exchange narrowing and intersite correlation. *Chem Phys.* 1984; 85:73–82.
34. Trinkunas G, Herek JL, Polivka T, Sundstrom V, Pullerits T. Exciton delocalization probed by excitation annihilation in the light-harvesting antenna LH2. *Phys. Rev. Lett.* 2001; 86:4167–4170. [PubMed: 11328122]
35. Knapp EW, Fischer SF. Exchange narrowing of correlated inhomogeneities - the dimer lineshape. *Chem. Phys. Lett.* 1984; 103:479–483.
36. Ishizaki A, Fleming GR. Quantum superpositions in photosynthetic light harvesting: delocalization and entanglement. *New J. Phys.* 2010; 12:055004.

37. Novoderezhkin V, Wendling M, van Grondelle R. Intra- and interband transfers in the B800-B850 antenna of *Rhodospirillum rubrum*: Redfield theory modeling of polarized pump-probe kinetics. *J. Phys. Chem. B.* 2003; 107:11534–11548.
38. Harel E, Engel GS. Quantum coherence spectroscopy reveals complex dynamics in bacterial light-harvesting complex 2 (LH2). *Proc. Natl. Acad. Sci. U. S. A.* 2012; 109:706–711. [PubMed: 22215585]
39. Hildner R, Brinks D, Nieder JB, Cogdell RJ, van Hulst NF. Quantum coherent energy transfer over varying pathways in single light-harvesting complexes. *Science.* 2013; 340:1448–1451. [PubMed: 23788794]
40. Fidler AF, Singh VP, Long PD, Dahlberg PD, Engel GS. Time scales of coherent dynamics in the light-harvesting complex 2 (LH2) of *Rhodobacter sphaeroides*. *J. Phys. Chem. Lett.* 2013; 4:1404–1409. [PubMed: 23878622]
41. Schlau-Cohen GS, et al. Elucidation of the timescales and origins of quantum electronic coherence in LHCII. *Nat Chem.* 2012; 4:389–395. [PubMed: 22522259]
42. Fidler AF, Caram JR, Hayes D, Engel GS. Towards a coherent picture of excitonic coherence in the Fenna-Matthews-Olson complex. *J. Phys. B-At. Mol. Opt. Phys.* 2012; 45:154013.
43. Chung HS, Khalil M, Smith AW, Ganim Z, Tokmakoff A. Conformational changes during the nanosecond-to-millisecond unfolding of ubiquitin. *Proc. Natl. Acad. Sci. U. S. A.* 2005; 102:612–617. [PubMed: 15630083]
44. Bredenbeck J, Helbing J, Hamm P. Solvation Beyond the Linear Response Regime. *Phys. Rev. Lett.* 2005; 95:083201. [PubMed: 16196857]
45. Harel E, Fidler AF, Engel GS. Single-shot gradient-assisted photon echo electronic spectroscopy. *J. Phys. Chem. A.* 2011; 115:3787–3796. [PubMed: 21090733]
46. Lozovoy VV, Pastirk I, Dantus M. Multiphoton intrapulse interference. IV. Ultrashort laser pulse spectral phase characterization and compensation. *Opt. Lett.* 2004; 29:775–777. [PubMed: 15072388]
47. Sweetser JN, Fittinghoff DN, Trebino R. Transient-grating frequency-resolved optical gating. *Opt. Lett.* 1997; 22:519–521. [PubMed: 18183253]
48. Frank HA, et al. Triplet triplet energy-transfer in B800-850 light-harvesting complexes of photosynthetic bacteria and synthetic carotenoporphyrin molecules investigated by electron-spin-resonance. *Biochim. Biophys. Acta.* 1987; 892:253–263.
49. Brixner T, Mancal T, Stiopkin IV, Fleming GR. Phase-stabilized two-dimensional electronic spectroscopy. *J. Chem. Phys.* 2004; 121:4221–4236. [PubMed: 15332970]
50. Hybl JD, Ferro AA, Jonas DM. Two-dimensional Fourier transform electronic spectroscopy. *J. Chem. Phys.* 2001; 115:6606–6622.
51. Zigmantas D, et al. Two-dimensional electronic spectroscopy of the B800-B820 light-harvesting complex. *Proc. Natl. Acad. Sci. U. S. A.* 2006; 103:12672–12677. [PubMed: 16912117]

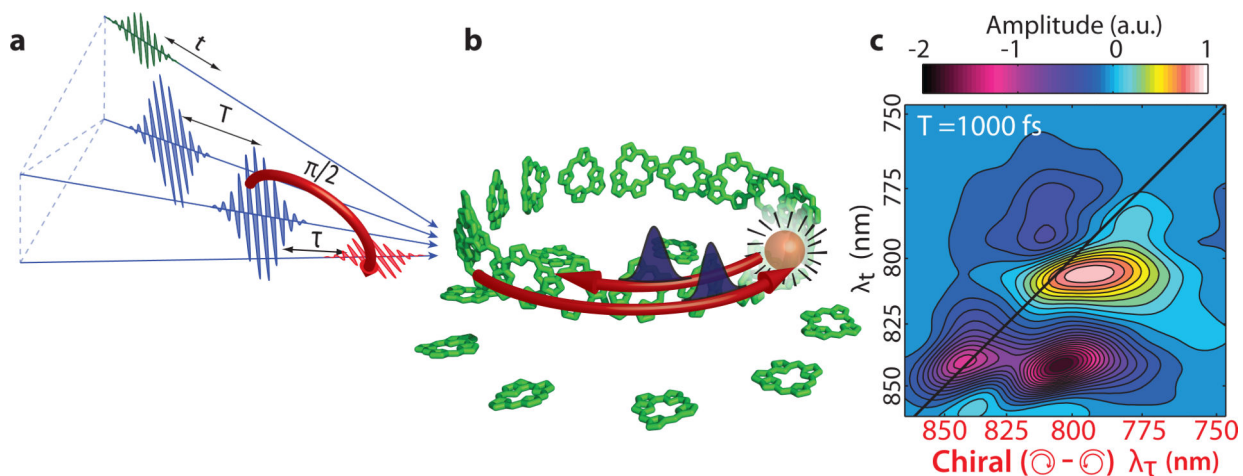


Figure 1. Probing chiral wave packet dynamics in LH2

A series of three femtosecond laser pulses (a) probe chiral optical response within light harvesting complex 2 (LH2) using a chirally sensitive polarization scheme. The LH2 complex (b) contains two rings of bacteriochlorophyll a chromophores (phytyl tails and functional groups removed for clarity). Excitations within the inner ring correspond semiclassically to wave packets that travel around the ring in opposing directions, largely corresponding to $k = \pm 1$. Higher order k states will also contribute to the response. Interactions with the surrounding protein leads to scattering events that cause the wave pack to reverse direction. The spectroscopy yields chiral maps (c) of the relaxation dynamics.

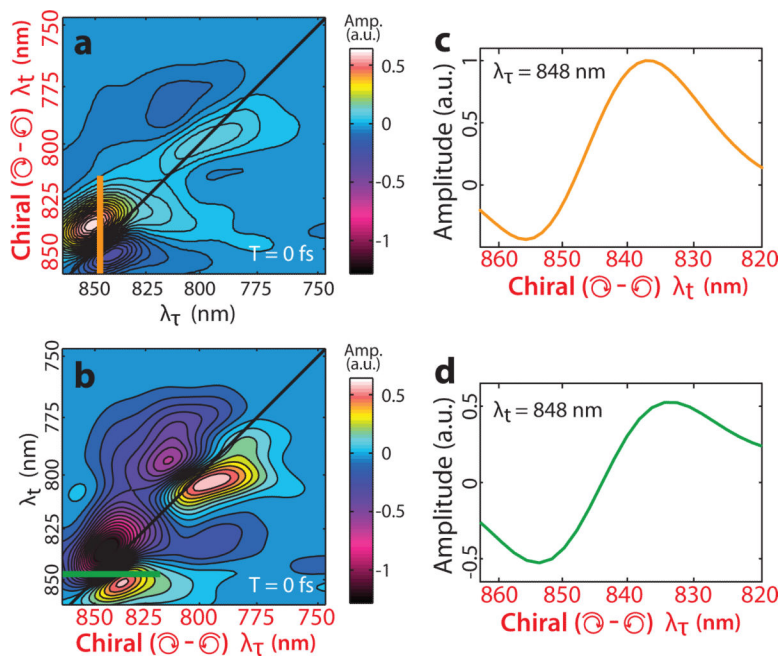


Figure 2. Chiral 2D Spectra

Chiral two-dimensional (C2D) maps at a waiting time $T = 0$ fs are shown for the chiral probe (a) and chiral pump (b) polarization sequence. The chiral axes are highlighted in red. Slices through the chiral axis in the 850 nm region, shown by the orange (c) and green (d) traces on the C2D maps, display the characteristic biphasic line shape of linear circular dichroism experiments. The sign of features corresponds to the preferential absorption of left versus right circularly polarized light.

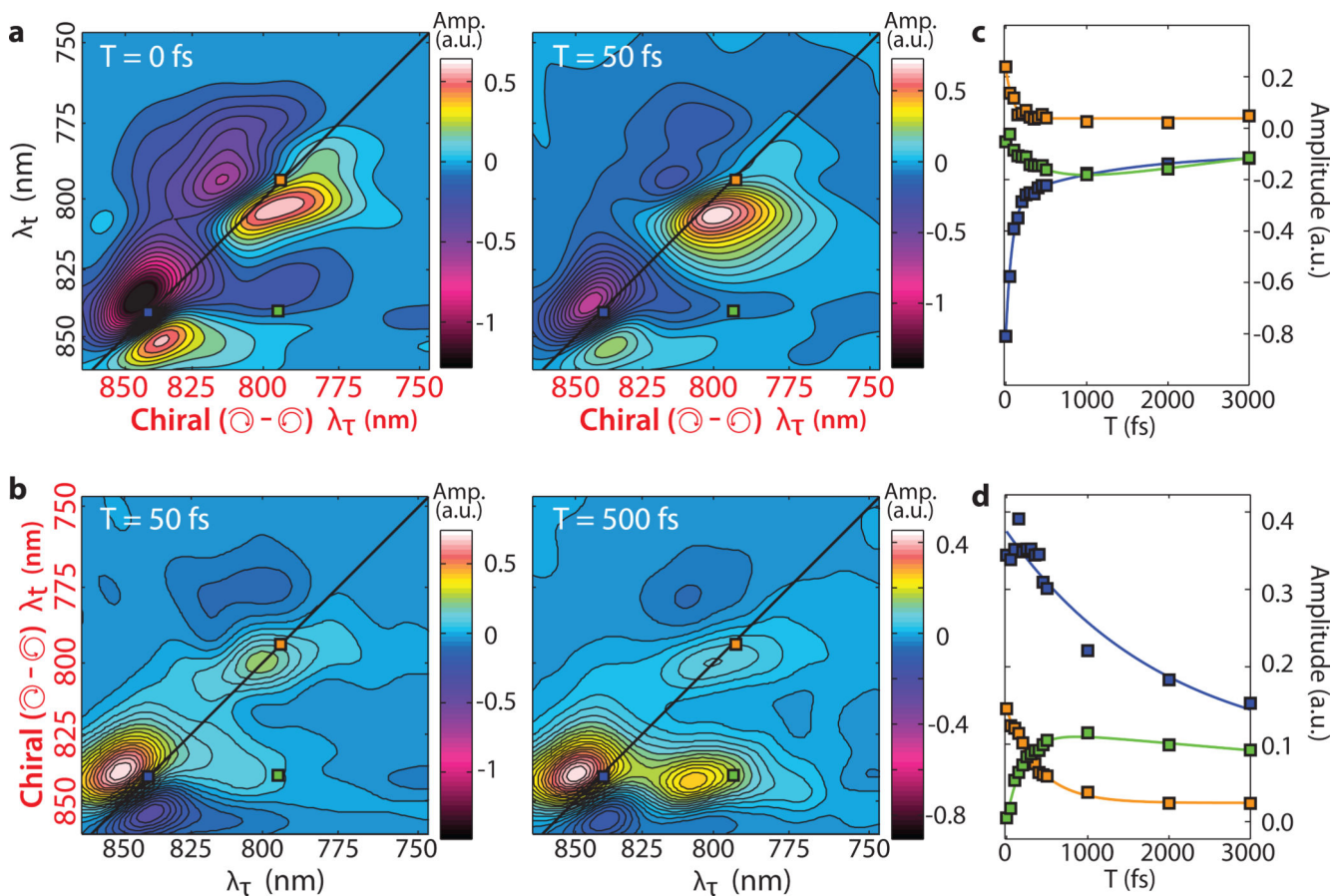


Figure 3. Time evolution of C2D spectra

Chiral two-dimensional (C2D) spectra for the indicated waiting times are shown for the chiral pump (a) and chiral probe (b). Traces through the two main features and the corresponding cross peak are shown in panels (c) and (d) for the chiral pump and chiral probe experiments respectively. Fits of the traces to a sum of two exponentials are drawn as lines.

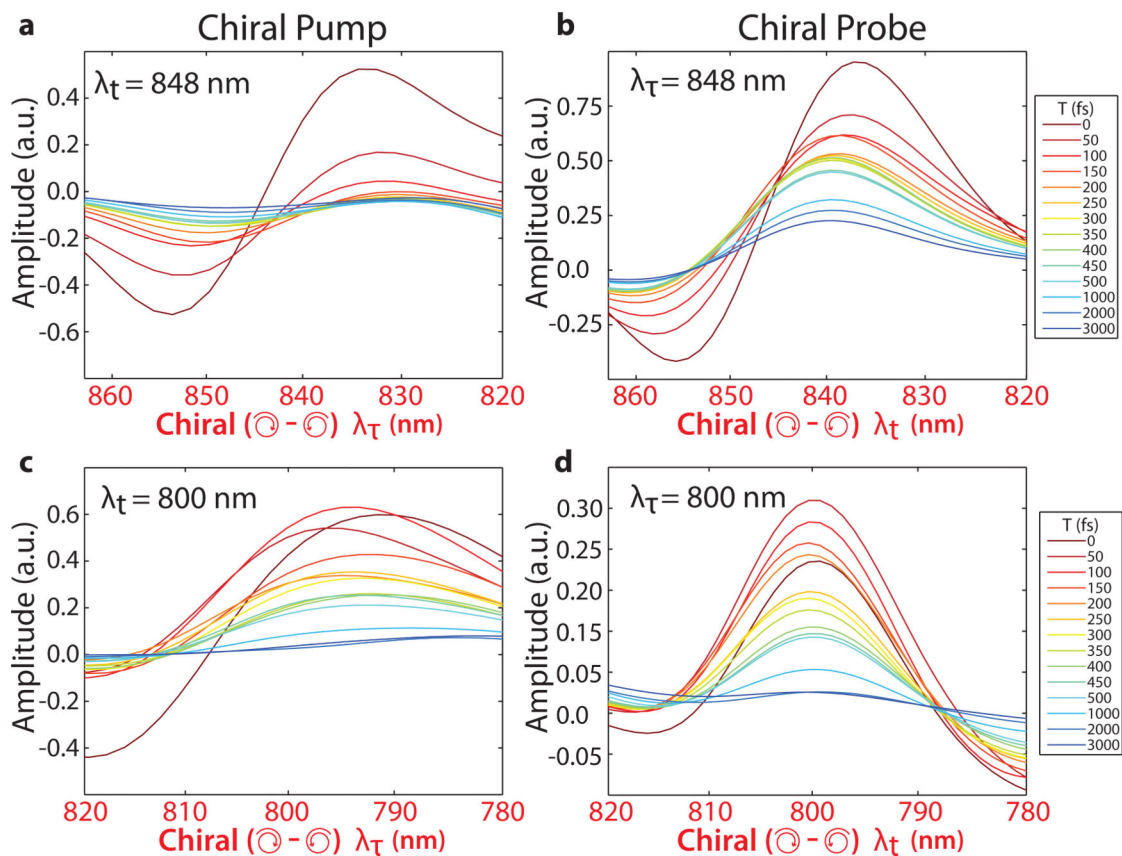


Figure 4. Loss of biphasic response

Time evolution of slices through the chiral axis for the chiral pump (**a, c**) and chiral probe (**b, d**) for the 850 nm region (**a, b**) and 800 nm region (**b, d**).