

SHORT COMMUNICATION

Open Access

# Ranolazine inhibits Na<sub>v</sub>1.5-mediated breast cancer cell invasiveness and lung colonization

Virginie Driffort<sup>1</sup>, Ludovic Gillet<sup>1</sup>, Emeline Bon<sup>1</sup>, Séverine Marionneau-Lambot<sup>2</sup>, Thibault Oullier<sup>2</sup>, Virginie Joulin<sup>3</sup>, Christine Collin<sup>4</sup>, Jean-Christophe Pagès<sup>4,5</sup>, Marie-Lise Jourdan<sup>1,4</sup>, Stéphan Chevalier<sup>1,6</sup>, Philippe Bougnoux<sup>1,4</sup>, Jean-Yves Le Guennec<sup>7</sup>, Pierre Besson<sup>1,6\*†</sup> and Sébastien Roger<sup>1,8\*†</sup>

## Abstract

**Background:** Na<sub>v</sub>1.5 voltage-gated sodium channels are abnormally expressed in breast tumours and their expression level is associated with metastatic occurrence and patients' death. In breast cancer cells, Na<sub>v</sub>1.5 activity promotes the proteolytic degradation of the extracellular matrix and enhances cell invasiveness.

**Findings:** In this study, we showed that the extinction of Na<sub>v</sub>1.5 expression in human breast cancer cells almost completely abrogated lung colonisation in immunodepressed mice (NMRI nude). Furthermore, we demonstrated that ranolazine (50 μM) inhibited Na<sub>v</sub>1.5 currents in breast cancer cells and reduced Na<sub>v</sub>1.5-related cancer cell invasiveness *in vitro*. *In vivo*, the injection of ranolazine (50 mg/kg/day) significantly reduced lung colonisation by Na<sub>v</sub>1.5-expressing human breast cancer cells.

**Conclusions:** Taken together, our results demonstrate the importance of Na<sub>v</sub>1.5 in the metastatic colonisation of organs by breast cancer cells and indicate that small molecules interfering with Na<sub>v</sub> activity, such as ranolazine, may represent powerful pharmacological tools to inhibit metastatic development and improve cancer treatments.

**Keywords:** Na<sub>v</sub>1.5 voltage-gated sodium channels, Cancer cell invasiveness, Ranolazine, Metastases

## Findings

Breast cancer is the primary cause of death by cancer in women worldwide and patients mostly die because of metastases appearance and development [1] which rely in part on the ability of cancer cells to degrade and migrate through extracellular matrices (ECM). Currently, there is no treatment for specifically inhibiting metastases development. Voltage-gated sodium channels (Na<sub>v</sub>) are essential for action potential firing and as such are characteristic of excitable cells [2]. However, different Na<sub>v</sub> isoforms have been found in non-excitable epithelial human cancer biopsies and cells, such as in breast [3,4], lung [5-7], prostate [8], cervix [9], ovarian [10,11] and colon cancer [12], and their function, through persistent currents at the membrane potential, enhances degradation of ECM [5,13-15]. Notably, the Na<sub>v</sub>1.5 isoform is abnormally expressed in breast cancer biopsies, while it

is not in non-cancerous mammary tissues [14], and its level of expression is associated with lymph node invasion, the development of metastases and a reduced survival of patients [3,16,17]. In cancer cells, it is expressed as a neonatal splice variant showing a 7-amino acid substitution in the segments S3 and S4 of the domain I (DI-S3-S4) of the protein compared to the adult variant that shows a particular pharmacology [18] and was proposed to serve as a metastatic marker [16]. Na<sub>v</sub>1.5 is functional at the plasma membrane of highly invasive breast cancer cells [3,16,17], and its activity maintains a pro-invasive phenotype [15], related to "mesenchymal migration" [19]. Indeed, while the complete mechanism involved is not yet elucidated, Na<sub>v</sub>1.5 activity was shown *i*) to control Src kinase activity, cortactin phosphorylation (Y421) and the subsequent polymerisation of actin filaments, *ii*) to increase the activity of the Na<sup>+</sup>/H<sup>+</sup> exchanger type 1 (NHE-1), thus enhancing the efflux of protons and the proteolytic activity of extracellularly-released acidic cysteine cathepsins B and S [13,20]. Altogether, these results indicated that Na<sub>v</sub>1.5 promotes

\* Correspondence: pierre.besson@univ-tours.fr; sebastien.roger@univ-tours.fr

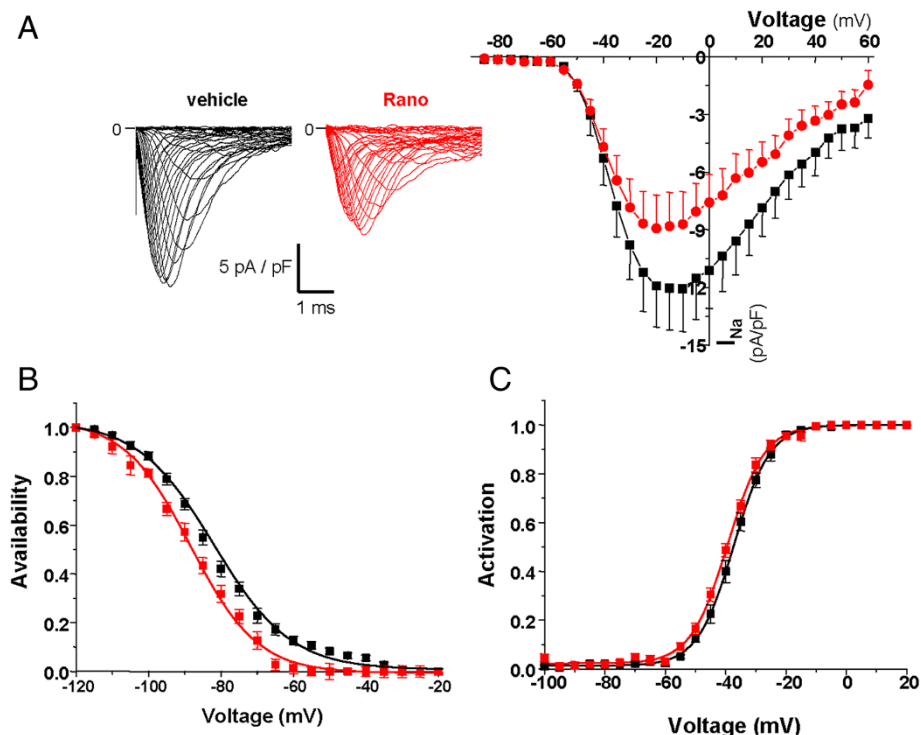
†Equal contributors

<sup>1</sup>Inserm UMR1069, Nutrition, Croissance et Cancer, Université François-Rabelais de Tours, 10 Boulevard Tonnellé, Tours 37032, France  
Full list of author information is available at the end of the article

the invadopodial activity of breast cancer cells and the invasion of the surrounding ECM [15]. Molecules reducing its activity, such as tetrodotoxin, reduce cancer cell invasiveness *in vitro* [3,14,18]. Correlatively, molecules that increase its activity, such as veratridine, enhance ECM invasion [13]. However, to the best of our knowledge, the importance of  $\text{Na}_V1.5$  expression, and the relevance for its pharmacological inhibition, on the metastatic organ colonisation by breast cancer cells have never been reported so far. Ranolazine is an antiarrhythmic drug indicated for the treatment of chronic angina that was approved by the Food and Drug Administration (FDA) in 2006. While it is proposed to have several pharmacological actions, its best characterized one is the selective inhibition of late sodium currents [21]. This leads to a steeper  $\text{Na}^+$  gradient which, by increasing the activity of the  $\text{Na}^+/\text{Ca}^{2+}$  exchanger (NCX), reduces calcium overload, and improves ventricular relaxation in pathological conditions associated with cardiac ischemia [22].

In this study we investigated how  $\text{Na}_V1.5$  expression in human breast cancer cells affected metastatic colonisation of organs in immunodepressed mice, and whether its pharmacological inhibition by ranolazine reduced cancer cell invasiveness both *in vitro* and *in vivo*.

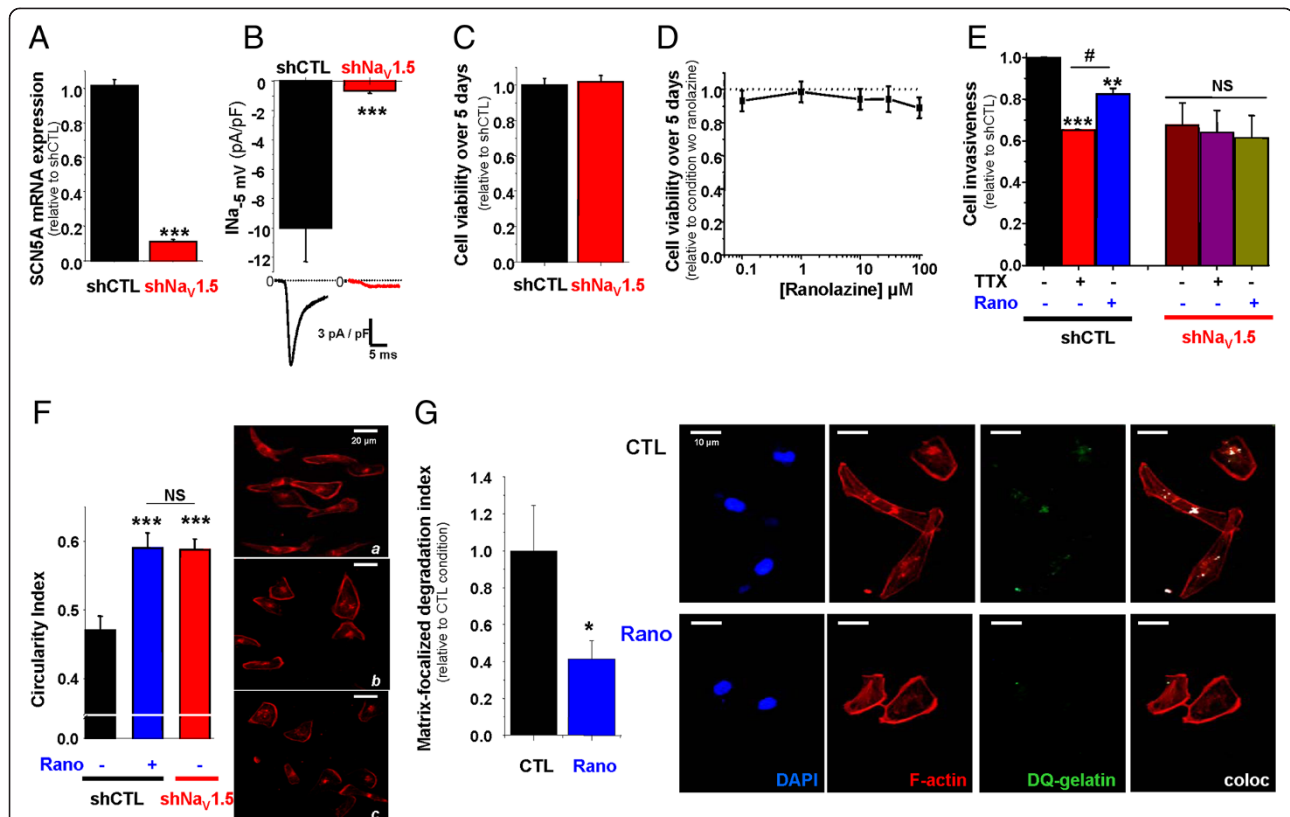
Highly invasive MDA-MB-231 human breast cancer cells express mRNA for  $\text{Na}_V1.5$ ,  $\text{Na}_V1.6$  and  $\text{Na}_V1.7$  channels [16], but only  $\text{Na}_V1.5$  channels are functional at the plasma membrane and are giving rise to transient inward sodium currents ( $\text{I}_{\text{Na}}$ ) under voltage-clamp procedures [13] (see Additional file 1: Material and methods).  $\text{I}_{\text{Na}}$ -voltage ( $\text{I}_{\text{Na}}$ -V) protocols were performed using the whole-cell configuration of the patch clamp technique from MDA-MB-231-Luc cells modified to stably express a null-target small hairpin RNA (shCTL). The  $\text{I}_{\text{Na}}$ -V relationship, obtained from a holding potential of  $-100$  mV, indicated a threshold of activation around  $-60$  mV and maximal current of  $-12.1 \pm 2.2$  pA/pF at a voltage of  $-10$  mV (Figure 1A). The acute application of ranolazine



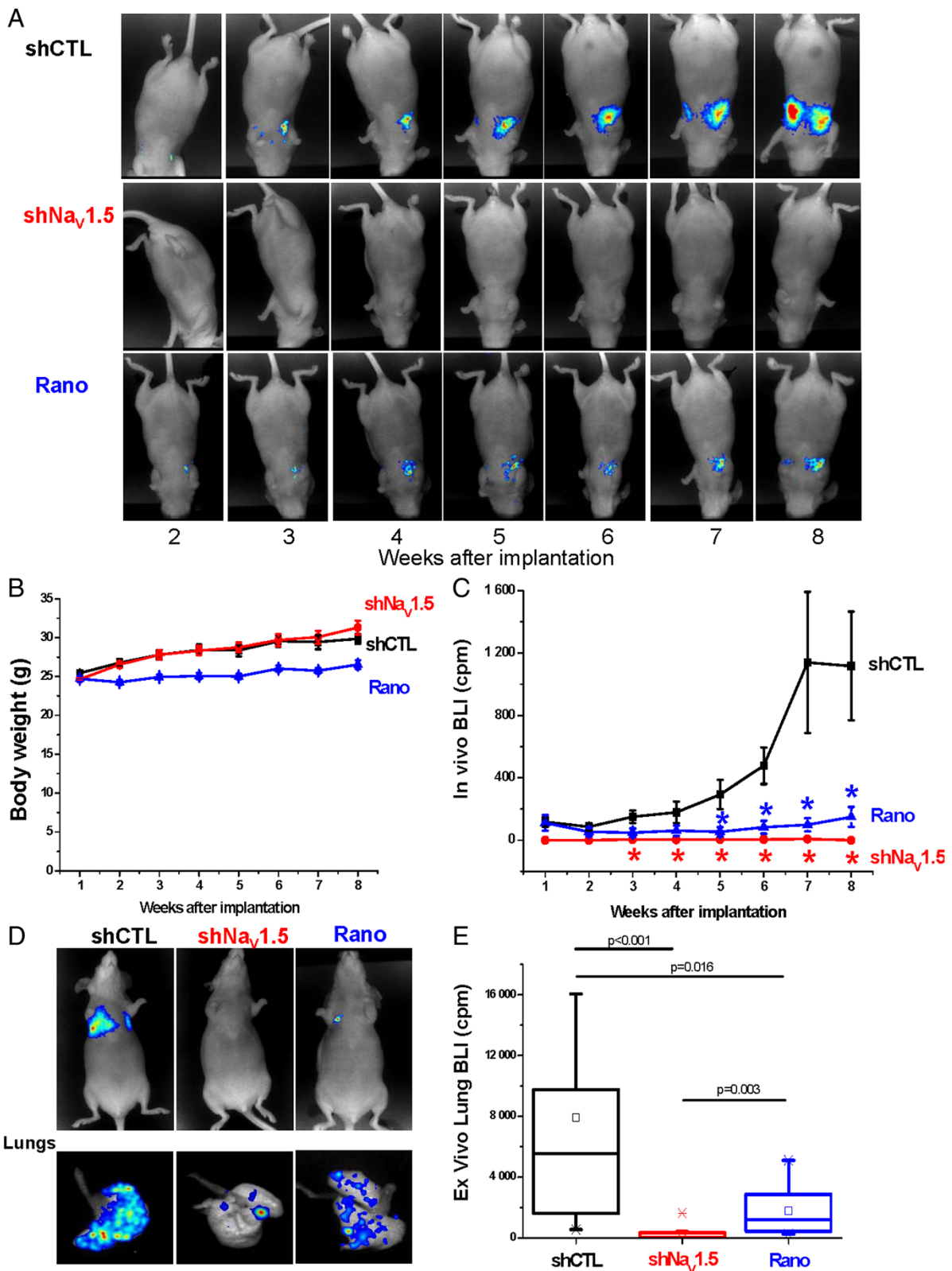
**Figure 1** Ranolazine inhibits sodium current in human breast cancer cells. Sodium currents ( $\text{I}_{\text{Na}}$ ) from MDA-MB-231 breast cancer cells stably expressing null target shRNA (shCTL) were studied in voltage-clamp mode with the whole-cell configuration of the patch clamp technique. **A**, Left, representative  $\text{I}_{\text{Na}}$ -voltage traces obtained from one cell before (vehicle) and after 50  $\mu\text{M}$  ranolazine treatment (Rano). Right, mean  $\pm$  s.e.m. steady-state  $\text{I}_{\text{Na}}$ -voltage relationships obtained from cancer cells before and after incubation with 50  $\mu\text{M}$  ranolazine ( $n = 12$  cells) from a holding potential of  $-100$  mV. There is no statistical difference between the two conditions for voltages ranging from  $-35$  to  $+40$  mV ( $p < 0.001$ , Wilcoxon test). **B**, Availability-voltage relationships obtained in presence (red trace) or not (vehicle, black trace) of 50  $\mu\text{M}$  ranolazine. There is a significant leftward shift of the availability-voltage relationship in presence of ranolazine ( $p < 0.001$ ). The half (1/2)-inactivation voltage was shifted from  $-84.1 \pm 1.4$  mV to  $-90.3 \pm 1.7$  mV in absence and presence of ranolazine, respectively. **C**, Activation-voltage relationships obtained in presence (red trace) or not (vehicle, black trace) of 50  $\mu\text{M}$  ranolazine. There is a significant leftward shift of the activation-voltage relationship in presence of ranolazine, and the 1/2-activation voltage was shifted from  $-37.1 \pm 1.0$  mV to  $-39.2 \pm 0.6$  mV in absence and presence of ranolazine, respectively. ( $p < 0.01$ , Wilcoxon test).

(50  $\mu$ M) significantly reduced the maximal amplitude to  $-8.7 \pm 1.7$  pA/pF ( $p < 0.001$ ). This decrease in the maximal current amplitude was associated with a significant leftward shift of the availability-voltage relationship (Figure 1B). The half (1/2)-inactivation voltage was shifted from  $-84.1 \pm 1.4$  mV to  $-90.3 \pm 1.7$  mV ( $p < 0.001$ ) in absence and presence of ranolazine, respectively. The activation-voltage relationship was significantly modified (Figure 1C), and the 1/2-activation voltage was shifted from  $-37.1 \pm 1.0$  mV to  $-39.2 \pm 0.6$  mV ( $p < 0.01$ ). Therefore, ranolazine reduced efficiently the activity of the neonatal  $Na_v1.5$  isoform expressed in human breast cancer cells. This isoform is the only one to be functional in breast cancer cells [13,16] and we selected a population of

cells stably expressing a small hairpin RNA targeting its expression (sh $Na_v1.5$ ) after lentiviral transduction. This led to a significant  $89 \pm 1\%$  decrease of  $Na_v1.5$  mRNA expression (Figure 2A), resulting in the complete disappearance of sodium currents in almost all cancer cells (Figure 2B), with no effect on cell viability (Figure 2C). Before assessing the effect of ranolazine in reducing cancer cell invasiveness, we addressed a possible cytotoxic effect of its application. Figure 2D indicates that ranolazine, incubated for 5 days in a range of concentration from 0.1 to 100  $\mu$ M had no effect on cell viability. It was then used at 50  $\mu$ M in the 24 h invasion experiment with Matrigel<sup>™</sup>-coated filters (Figure 2E). In shCTL cells, cell invasiveness was reduced by  $35 \pm 4\%$  with



**Figure 2** Ranolazine inhibits the  $Na_v1.5$ -mediated breast cancer cell invasiveness *in vitro*. **A**, *SCN5A* mRNA expression assessed by real-time qPCR in shCTL and sh $Na_v1.5$  cells ( $n = 10$  separate experiments) and compared with a Mann–Whitney test. **B**, Mean  $\pm$  s.e.m. peak  $I_{Na}$  recorded in 23 shCTL cells and in 20 sh $Na_v1.5$  cells under a depolarization from  $-100$  to  $-5$  mV (Mann–Whitney test). Representative currents are shown underneath. **C**, shCTL and sh $Na_v1.5$  cell growth and viability after 5 days, expressed relative to the shCTL cell line ( $n = 3$  independent experiments). **D**, Cell viability of shCTL after 5 days of growth in presence of increasing concentrations of ranolazine, from 0.1 to 100  $\mu$ M, and expressed relative to the control condition without ranolazine (vehicle). **E**, Effect of 30  $\mu$ M tetrodotoxin (TTX) or 50  $\mu$ M ranolazine (Rano) on shCTL and sh $Na_v1.5$  human breast cancer cell invasiveness (Kruskal-wallis analysis followed by a Dunn’s test). **F**, shCTL and sh $Na_v1.5$  cells were cultured for 24 h on a Matrigel<sup>™</sup>-composed matrix treated with 50  $\mu$ M ranolazine (Rano) or not. F-actin cytoskeleton was stained with phalloidin-AlexaFluor594. A cell circularity index was calculated using ImageJ<sup>®</sup> software ( $n = 138$ –238 cells analysed, Mann–Whitney test). **G**, shCTL cells were cultured on a Matrigel<sup>™</sup>-composed matrix containing DQ-Gelatin<sup>®</sup> for 24 h in presence or not of 50  $\mu$ M ranolazine. A “Matrix-Focalized-degradation activity index” was calculated as being the number of pixels corresponding to the co-localization of F-actin condensation areas (F-actin cytoskeleton was stained with phalloidin-Alexa594) and focal spots of DQ-gelatin proteolysis (coloc) (7). Results are expressed relative to the control condition (CTL,  $N = 534$  cells) without ranolazine (Rano,  $N = 375$  cells) and compared using Mann–Whitney test. Representative pictures are shown on the left. Statistical significance is indicated as: \* $p < 0.05$ ; \*\* $p < 0.01$  and \*\*\* $p < 0.001$ . NS stands for not statistically different.



**Figure 3** (See legend on next page.)

(See figure on previous page.)

**Figure 3**  $\text{Na}_V1.5$  suppression, or ranolazine treatment, inhibit metastatic lung colonisation by breast cancer cells. **A**, Representative bioluminescent imaging (BLI) measurement performed in the same NMRI nude mouse per condition from week 2 to week 8 after cancer cell injection. Mice were injected with shCTL MDA-MB-231-Luc cells (shCTL), or with sh $\text{Na}_V1.5$  MDA-MB-231-Luc cells (sh $\text{Na}_V1.5$ ) or with shCTL MDA-MB-231-Luc cells and treated (5 days/week) with ranolazine (50 mg/kg) (Rano) or vehicle (shCTL, sh $\text{Na}_V1.5$ ). **B**, Evolution of mice body weight during the experiments in the same conditions than in A. **C**, Mean *in vivo* BLI value (expressed in cpm) as a function of time recorded in the whole body of mice coming from the three groups indicated previously (shCTL, n = 18; sh $\text{Na}_V1.5$ , n = 12; Rano, n = 8) (Statistical significance is indicated as: \*p < 0.05, Kruskal-Wallis analysis followed by Dunn's test). **D**, Representative BLI at completion of the study (8<sup>th</sup> week after cells injection), in whole animals and *ex vivo* after lung isolation. **E**, BLI quantification of excised lungs. Box plots indicate the first quartile, the median, and the third quartile, squares indicate the mean (shCTL, n = 18; sh $\text{Na}_V1.5$ , n = 12; Rano, n = 8) (Kruskal-Wallis analysis followed by Dunn's test).

the total inhibition of  $\text{Na}_V1.5$  currents with 30  $\mu\text{M}$  tetrodotoxin (TTX), and by  $18 \pm 3\%$  with ranolazine. In comparison to shCTL cells, sh $\text{Na}_V1.5$  cancer cells, which do not express  $\text{Na}_V1.5$ , had a reduced invasiveness of  $33 \pm 10\%$ . In sh $\text{Na}_V1.5$  cells, both TTX and ranolazine were ineffective to further reduce cell invasiveness, suggesting that ranolazine was specific in inhibiting  $\text{Na}_V1.5$ -related invasion.  $\text{Na}_V1.5$  expression and activity was recently shown to control the acquisition of a pro-invasive phenotype, by maintaining a spindle-shape morphology and by controlling the ECM proteolysis by MDA-MB-231 cancer cells [15]. We found that ranolazine increased the circularity of shCTL cells, thus decreasing the pro-invasive morphology, to the same extent as the complete extinction of  $\text{Na}_V1.5$  expression (Figure 2F). Furthermore, ranolazine reduced the focal ECM degradative activity of shCTL cells by  $58.6 \pm 10.0\%$  (Figure 2G). This activity, which is related to the invadopodial activity, was monitored as being the release of fluorescence from DQ-gelatin at focal sites of F-actin polymerisation as previously described [15].

Because  $\text{Na}_V1.5$  was proposed to promote metastases development from breast tumours, we assessed the importance of its expression in human breast cancer cells for the colonisation of organs. ShCTL or sh $\text{Na}_V1.5$  cells, both expressing the luciferase gene, were injected in the tail vein of NMRI nude mice. A third experimental group was set with mice injected with shCTL cells and receiving a daily intraperitoneal injection of ranolazine (50 mg/Kg – 5 days per week). The colonisation of mice organs by human cancer cells was followed *in vivo*, every week for a total duration of 8 weeks, by bioluminescent imaging (BLI) after luciferin injection (Figure 3A). There was no statistical difference in the evolution of animal body weights between the three groups (Figure 3B). BLI performed in living animals indicated that shCTL cells, which express  $\text{Na}_V1.5$ , strongly colonised and developed into the chest area (which was the case for 17 out of 18 mice). In contrast, sh $\text{Na}_V1.5$  cells led to a very weak signal (1/12 mice) or no signal at all (11/12 mice) in the chest area. Ranolazine, which inhibited  $\text{Na}_V1.5$  currents (Figure 1), significantly reduced total BLI signal

in mice injected with shCTL cells. *In vitro*, ranolazine treatment did not interfere with luciferase activity in shCTL cells (Additional file 2: Figure S1) indicating that the BLI signal recorded was indeed strongly correlated with the abundance of cancer cells in mice organs. In this experimental group, BLI signal was recorded in 5 out of 8 mice (Figure 3C). At completion of the study, mice were sacrificed and isolated organs (lungs, brain, liver, bones from rachis/ribs and legs) were analysed *ex vivo*. In the shCTL group, all mice showed lung colonisation (18/18) and a small proportion also had bioluminescent signal in rachis and ribs (2/18) and in leg bones (2/18). In the sh $\text{Na}_V1.5$  group, 7 mice out of 12 had lung colonisation and one (1/12) had bioluminescent signal in rachis and ribs. In the ranolazine group, although 8/8 mice presented lung colonisation, bioluminescence was dramatically reduced by  $77 \pm 8\%$ , at a level similar to the experimental suppression of  $\text{Na}_V1.5$  (inhibition of lung BLI by  $97 \pm 2\%$ ) (Figure 3D, 3E). In the ranolazine group, mice did not show BLI signal in other organs.

While it is now well-established that  $\text{Na}_V$  channels are anomalously expressed in several epithelial tumours and are associated with metastasis occurrence and patient mortality [12,16,17,23], the consequence of their expression on metastatic organ colonisation was not demonstrated so far. To our knowledge, this study is the first to clearly establish a link between  $\text{Na}_V1.5$  expression in human breast cancer cells and the colonisation of lungs *in vivo*. Furthermore, this study using ranolazine, a drug that is clinically used, shows that the pharmacological inhibition of  $\text{Na}_V$  channels could be effective in reducing metastatic colonisation with no apparent toxic effect. In conclusion, this study opens a new therapeutical concept for the management of cancer disease. Inhibitors of  $\text{Na}_V$  channels, already approved for other clinical use such as antiarrhythmics, anticonvulsants [17] or anaesthetics [24], or new molecules that are even more effective in blocking neonatal variants, could be of high interest in the prevention and/or reduction of metastatic spreading of cancer cells at the diagnosis of the primary tumour.

## Additional files

### Additional file 1: Materials and methods.

**Additional file 2: Figure S1.** MDA-MB-231-shCTL cells expressing luciferase gene were seeded at different densities then treated for 24h with Ranolazine (50  $\mu$ M, red circles) or not (black squares).

### Abbreviations

BLI: Bioluminescent imaging; ECM: Extracellular matrix; INa: Sodium currents; Nav: Voltage-gated sodium channels; TTX: Tetrodotoxin.

### Competing interests

The authors declare that they have no competing interests.

### Authors' contributions

VD, LG and EB performed *in vitro* experiments. VD, SM-L and TO performed *in vivo* experiments. VD, CC, VJ, J-CP. and M-LJ designed, produced shRNA, and participated to the selection of cell lines, SC, PB, and J-YLG contributed to the design of the study. Data were conceived, analyzed and interpreted by VD, PB and SR Overall supervision of the study was performed by PB and SR Paper was written by PB and SR, read and corrected by all authors. All authors read and approved the final manuscript.

### Acknowledgements

This work was supported by "Ministère de la Recherche et des Technologies", Inserm, "Ligue Nationale Contre le Cancer", Région Centre (grant "NavMetarget" and LIPIDS project of ARD2020-Biomedicaments) and "Association CANCEN". We thank I. Domingo and C. Le Roy for technical and administrative assistance. We thank Prof. W.J. Brouillette (University of Alabama, USA) for helpful comments about the manuscript.

### Author details

<sup>1</sup>Inserm UMR1069, Nutrition, Croissance et Cancer, Université François-Rabelais de Tours, 10 Boulevard Tonnellé, Tours 37032, France. <sup>2</sup>Cancéropôle du Grand Ouest, Nantes, France. <sup>3</sup>Inserm U1009, Institut Gustave Roussy, Villejuif, France. <sup>4</sup>CHRU de Tours, Tours, France. <sup>5</sup>Inserm, U966, Université François-Rabelais de Tours, Tours, France. <sup>6</sup>UFR Sciences Pharmaceutiques, Université François-Rabelais de Tours, Tours, France. <sup>7</sup>Inserm U1046, Université de Montpellier-1, Université de Montpellier-2, Montpellier, France. <sup>8</sup>UFR Sciences et Techniques, Département de Physiologie Animale, Université François-Rabelais de Tours, Tours, France.

Received: 28 August 2014 Accepted: 3 December 2014

Published: 11 December 2014

### References

1. Parkin DM, Bray F, Ferlay J, Pisani P: **Global cancer statistics, 2002.** *CA Cancer J Clin* 2005, **55**:74–108.
2. Catterall WA: **Voltage-gated sodium channels at 60: structure, function, and pathophysiology.** *J Physiol* 2012.
3. Roger S, Besson P, Le Guennec JY: **Involvement of a novel fast inward sodium current in the invasion capacity of a breast cancer cell line.** *Biochim Biophys Acta* 2003, **1616**:107–111.
4. Brackenbury WJ, Chioni AM, Diss JK, Djamgoz MB: **The neonatal splice variant of Nav1.5 potentiates *in vitro* invasive behaviour of MDA-MB-231 human breast cancer cells.** *Breast Cancer Res Treat* 2007, **101**:149–160.
5. Roger S, Rollin J, Barascu A, Besson P, Raynal PI, lochmann S, Lei M, Bougnoux P, Gruel Y, Le Guennec JY: **Voltage-gated sodium channels potentiate the invasive capacities of human non-small-cell lung cancer cell lines.** *Int J Biochem Cell Biol* 2007, **39**:774–786.
6. Pancrazio JJ, Viglione MP, Tabbara IA, Kim YI: **Voltage-dependent ion channels in small-cell lung cancer cells.** *Cancer Res* 1989, **49**:5901–5906.
7. Onganer PU, Djamgoz MB: **Small-cell lung cancer (Human): potentiation of endocytic membrane activity by voltage-gated Na(+) channel expression *in vitro*.** *J Membr Biol* 2005, **204**:67–75.
8. Diss JK, Stewart D, Pani F, Foster CS, Walker MM, Patel A, Djamgoz MB: **A potential novel marker for human prostate cancer: voltage-gated sodium channel expression *in vivo*.** *Prostate Cancer Prostatic Dis* 2005, **8**(3):266–273.
9. Hernandez-Plata E, Ortiz CS, Marquina-Castillo B, Medina-Martinez I, Alfaro A, Berumen J, Rivera M, Gomora JC: **Overexpression of Nav1.6 channels is**

- associated with the invasion capacity of human cervical cancer. *Int J Cancer* 2012, **130**:2013–2023.
10. Gao R, Shen Y, Cai J, Lei M, Wang Z: **Expression of voltage-gated sodium channel alpha subunit in human ovarian cancer.** *Oncol Rep* 2010, **23**:1293–1299.
  11. Frede J, Fraser SP, Oskay-Ozcelik G, Hong Y, Ioana Braicu E, Sehoul J, Gabra H, Djamgoz MB: **Ovarian cancer: Ion channel and aquaporin expression as novel targets of clinical potential.** *Eur J Cancer* 2013, **49**:2331–2344.
  12. House CD, Vaske CJ, Schwartz AM, Obias V, Frank B, Luu T, Sarvazyan N, Irby R, Strausberg RL, Hales TG, Stuart JM, Lee NH: **Voltage-gated Na+ channel SCN5A is a key regulator of a gene transcriptional network that controls colon cancer invasion.** *Cancer Res* 2010, **70**:6957–6967.
  13. Gillet L, Roger S, Besson P, Lecaille F, Gore J, Bougnoux P, Lalmanach G, Le Guennec JY: **Voltage-gated sodium channel activity promotes cysteine cathepsin-dependent invasiveness and colony growth of human cancer cells.** *J Biol Chem* 2009, **284**:8680–8691.
  14. Roger S, Potier M, Vandier C, Besson P, Le Guennec JY: **Voltage-gated sodium channels: new targets in cancer therapy?** *Curr Pharm Des* 2006, **12**:3681–3695.
  15. Brisson L, Driffort V, Benoist L, Poet M, Counillon L, Antelmi E, Rubino R, Besson P, Labbal F, Chevalier S, Reshkin SJ, Gore J, Roger S: **Nav1.5 Na+ channels allosterically regulate the NHE-1 exchanger and promote the activity of breast cancer cell invadopodia.** *J Cell Sci* 2013, **126**:4835–4842.
  16. Fraser SP, Diss JK, Chioni AM, Mycielska ME, Pan H, Yamaci RF, Pani F, Siwy Z, Krasowska M, Grzywna Z, Brackenbury WJ, Theodorou D, Koyutürk M, Kaya H, Battaloglu E, De Bella MT, Slade MJ, Tolhurst R, Palmieri C, Jiang J, Latchman DS, Coombes RC, Djamgoz MB: **Voltage-gated sodium channel expression and potentiation of human breast cancer metastasis.** *Clin Cancer Res* 2005, **11**:5381–5389.
  17. Yang M, Kozminski DJ, Wold LA, Modak R, Calhoun JD, Isom LL, Brackenbury WJ: **Therapeutic potential for phenytoin: targeting Nav1.5 sodium channels to reduce migration and invasion in metastatic breast cancer.** *Breast Cancer Res Treat* 2012, **134**(2):603–615.
  18. Roger S, Guennec JY, Besson P: **Particular sensitivity to calcium channel blockers of the fast inward voltage-dependent sodium current involved in the invasive properties of a metastatic breast cancer cell line.** *Br J Pharmacol* 2004, **141**:610–615.
  19. Friedl P, Alexander S: **Cancer invasion and the microenvironment: plasticity and reciprocity.** *Cell* 2011, **147**:992–1009.
  20. Brisson L, Gillet L, Calaghan S, Besson P, Le Guennec JY, Roger S, Gore J: **Nav1.5 enhances breast cancer cell invasiveness by increasing NHE1-dependent H(+) efflux in caveolae.** *Oncogene* 2011, **30**:2070–2076.
  21. Antzelevitch C, Belardinelli L, Zygmunt AC, Burashnikov A, Di Diego JM, Fish JM, Cordeiro JM, Thomas G: **Electrophysiological effects of ranolazine, a novel antianginal agent with antiarrhythmic properties.** *Circulation* 2004, **110**:904–910.
  22. Fraser H, Belardinelli L, Wang L, Light PE, McVeigh JJ, Clanachan AS: **Ranolazine decreases diastolic calcium accumulation caused by ATX-II or ischemia in rat hearts.** *J Mol Cell Cardiol* 2006, **41**:1031–1038.
  23. Diaz D, Delgadillo DM, Hernandez-Gallegos E, Ramirez-Dominguez ME, Hinojosa LM, Ortiz CS, Berumen J, Camacho J, Gomora JC: **Functional expression of voltage-gated sodium channels in primary cultures of human cervical cancer.** *J Cell Physiol* 2007, **210**:469–478.
  24. Baptista-Hon DT, Robertson FM, Robertson GB, Owen SJ, Rogers GW, Lydon EL, Lee NH, Hales TG: **Potent inhibition by ropivacaine of metastatic colon cancer SW620 cell invasion and Nav1.5 channel function.** *Br J Anaesth* 2014, **113**(Suppl 1):i39–i48.

doi:10.1186/1476-4598-13-264

**Cite this article as:** Driffort et al.: Ranolazine inhibits Nav1.5-mediated breast cancer cell invasiveness and lung colonization. *Molecular Cancer* 2014 **13**:264.