

Article

Phenolic Profile of Herbal Infusion and Polyphenol-Rich Extract from Leaves of the Medicinal Plant *Antirhea borbonica*: Toxicity Assay Determination in Zebrafish Embryos and Larvae

Bryan Veeren , Batoul Ghaddar, Matthieu Bringart, Shaymaa Khazaal, Marie-Paule Gonthier , Olivier Meilhac, Nicolas Diotel and Jean-Loup Bascands *

INSERM, UMR 1188, Diabète Athérombose Thérapies Réunion Océan Indien (DéTROI), Plateforme CYROI, Université de La Réunion, 2 rue Maxime Rivière, 97490 Sainte-Clotilde, Reunion, France; bryan.veeren@univ-reunion.fr (B.V.); batoul.ghaddar@univ-reunion.fr (B.G.); matthieu.bringart@inserm.fr (M.B.); shaymaa.khazaal@hotmail.com (S.K.); marie-paule.gonthier@univ-reunion.fr (M.-P.G.); olivier.meilhac@inserm.fr (O.M.); nicolas.diotel@univ-reunion.fr (N.D.)

* Correspondence: jean-loup.bascands@inserm.fr; Tel.: +33-0-262-93-88-07

Received: 9 September 2020; Accepted: 24 September 2020; Published: 29 September 2020



Abstract: *Antirhea borbonica* (*A. borbonica*) is an endemic plant from the Mascarene archipelago in the Indian Ocean commonly used in traditional medicine for its health benefits. This study aims (1) at exploring polyphenols profiles from two types of extracts—aqueous (herbal infusion) and acetonic (polyphenol rich) extracts from *A. borbonica* leaves—and (2) at evaluating their potential toxicity in vivo for the first time. We first demonstrated that, whatever type of extraction is used, both extracts displayed significant antioxidant properties and acid phenolic and flavonoid contents. By using selective liquid chromatography–tandem mass spectrometry, we performed polyphenol identification and quantification. Among the 19 identified polyphenols, we reported that the main ones were caffeic acid derivatives and quercetin-3-*O*-rutinoside. Then, we performed a Fish Embryo Acute Toxicity test to assess the toxicity of both extracts following the Organisation for Economic Cooperation and Development (OECD) guidelines. In both zebrafish embryos and larvae, the polyphenols-rich extract obtained by acetonic extraction followed by evaporation and resuspension in water exhibits a higher toxic effect with a median lethal concentration (LC₅₀: 5.6 g/L) compared to the aqueous extract (LC₅₀: 20.3 g/L). Our data also reveal that at non-lethal concentrations of 2.3 and 7.2 g/L for the polyphenol-rich extract and herbal infusion, respectively, morphological malformations such as spinal curvature, pericardial edema, and developmental delay may occur. In conclusion, our study strongly suggests that the evaluation of the toxicity of medicinal plants should be systematically carried out and considered when studying therapeutic effects on living organisms.

Keywords: *Antirhea borbonica*; medicinal plants; polyphenols; zebrafish; toxicity; LC-MS/MS

1. Introduction

Réunion island, a French volcanic overseas department belonging to the Mascarene Archipelago (Indian Ocean), has never been connected to any other landmasses [1] and is described as one of the 36 world biodiversity hotspots [2]. It displays a wide and rich flora with a high percentage of endemic species. Many of the indigenous and endemic plants from Reunion island have been and are still used for traditional medicine [3]. Although some studies have reported the potential therapeutic effects of these plants in combatting hypertension [4], oxidative stress, inflammation [5],

parasitosis (i.e., plasmodium), and viruses (i.e., Chikungunya, Dengue, and Zika) [6–8], their deep content characterization as well as their real efficiency *in vivo* remains largely unknown.

Since 2012, 22 medicinal plants have been registered at the French pharmacopeia [9]. Among these medicinal plants, *Antirhea borbonica* (*A. borbonica*) leaves are peculiarly interesting, as they are widely used in traditional medicine for treating, among other things, diabetes, urinary tract infection, diarrhea, hemorrhage, rheumatism, and also kidney stones [3,10]. Most of these interesting presumptive effects have been attributed to the antioxidant and anti-inflammatory properties of *A. borbonica* leaves. Based on these beneficial effects, it has been previously reported that polyphenol-rich extracts from *A. borbonica* exhibited strong antioxidant and anti-inflammatory effects, *in vitro*, on preadipocytes, cerebral endothelial cells, and red blood cells [5,11,12], as well as, *in vivo*, in a mouse stroke model [13] and a diet-induced overweight zebrafish model [14]. Importantly, these antioxidant and anti-inflammatory biological effects were associated with the capacity of polyphenols to regulate key molecular targets, such as ROS-producing and detoxifying enzymes and the redox-sensitive transcriptional factor Nrf2, and improve vasoactive markers in these *in vitro* and *in vivo* pathological models [5,11–14].

Because *A. borbonica* seems to display therapeutic effects correlated to its polyphenol content, a thorough investigation was required to determine its precise phenolic profile composition and its subsequent potential toxicity. To the best of our knowledge, although registered in French pharmacopeia and despite the various therapeutic effects suggested in a number of *in vitro* studies (see above), no developmental toxicity study has been reported for any of these 22 medicinal plants.

In the present study, we compared the precise phenolic profile of aqueous and acetic (polyphenol rich) extracts from dried leaves of *A. borbonica* by performing LC-MS/MS analysis. In a second part, we investigated the potential toxicity of several concentrations of these extracts using a zebrafish model. Zebrafish (*Danio rerio*), due to its small-size, high reproductive ability, and rapid embryogenesis and organogenesis, has become the most famous cost-effective alternative model used for large-scale and high-throughput toxicological and physiopathological studies [15,16]. The transparency of zebrafish embryos and larvae enables the real-time visualization and imaging of drug effects throughout the developmental process. This laboratory model is widely used to test compounds' toxicity. We consequently determine the median lethal concentration (LC₅₀) in a zebrafish embryo and larvae models.

2. Results

2.1. Determination of Total Antioxidant Activity and Phenolic/Flavonoid Contents of Aqueous and Acetic Extracts

In their traditional use, *A. borbonica* leaves are used for herbal infusion. We assessed the antioxidant capacity of *A. borbonica* aqueous extract and compared it with a polyphenols-rich extract obtained by acetic solvent-assisted extraction, which is supposed to contain the maximal yield of polyphenols. To this end, an 2,2-Diphenyl-1-picrylhydrazyl (DPPH) assay was performed. As shown in Figure 1A, both extracts displayed, compared to ascorbic acid (40 g GAE/L) (94.7% ± 0.5%), an important antioxidant capacity of up to 90.7% ± 0.6% and 84.8% ± 1.2% (* *p* < 0.05 vs. 40 g/L of acetic extract and ^{\$\$} *p* < 0.01 vs. 40 g/L (GAE) ascorbic acid) for polyphenol rich and aqueous extracts, respectively. The DPPH assay on both *A. borbonica* extracts at different concentrations of 40, 30, 22.5, 16.9, 12.7, 9.5, 7.2, and 2.3 g GAE/L is shown in Figure S1a. The antioxidant activity is reported in Table 1 as IC₅₀, the required concentration for a 50% reduction in DPPH radicals. There was a minimum IC₅₀ value of 3.1 ± 0.3 g/L for the acetic extract, followed by the IC₅₀ value of the aqueous extract at 3.3 ± 0.3 g/L. These results confirm the important free radical-scavenging activity of both extracts compared to ascorbic acid (2.8 ± 0.1 g/L).

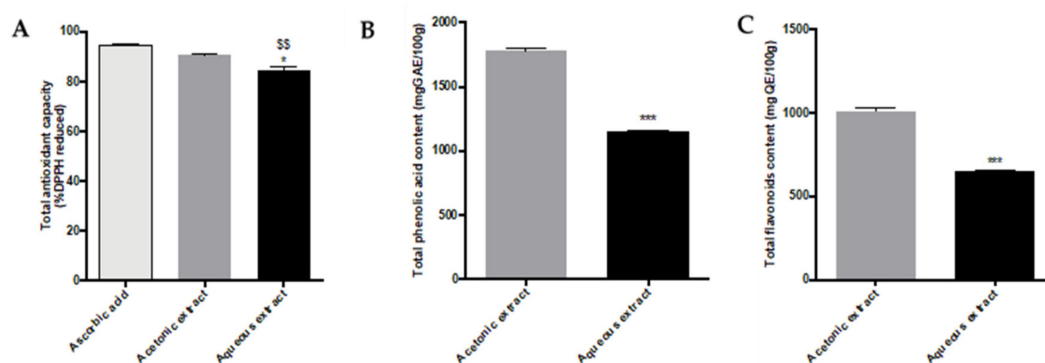


Figure 1. Antioxidant capacity, total phenolic acid, and flavonoid contents from *A. borbonica* extracts. (A) Total antioxidant capacity of polyphenols-rich extracts from *A. borbonica* was measured by the 2,2-Diphenyl-1-picrylhydrazyl (DPPH) assay. Ascorbic acid was used as a positive control. The results are expressed as the % of reduced DPPH. (B) Total phenolic contents of acetonic and aqueous extracts from *A. borbonica* were determined using the Folin–Ciocalteu colorimetric assay at a concentration of 40 g/L (plant dried powder). The results are expressed as the mg gallic acid equivalent (GAE)/100 g of plant dried powder. (C) Total flavonoid contents were determined using an aluminum chloride colorimetric assay. The results are expressed as the mg quercetin equivalent (QE)/100 g of plant dried powder. Data are the means \pm SDs of three independent experiments. * $p < 0.05$, *** $p < 0.001$ (vs. 40 g/L of acetonic extract), and ** $p < 0.01$ (vs. 40 g/L (GAE) ascorbic acid).

Table 1. Antioxidant activities of polyphenols-rich extracts from *A. borbonica* were measured by DPPH assay. Ascorbic acid was used as a positive control. The IC_{50} values were obtained by plotting the percentage of free radical-quenching activity against the logarithm of the different concentrations, ranging from 40 to 2.3 g/L (plant dried powder) for aqueous and acetonic extracts. The results were expressed in g/L. Data are the mean \pm SD of three independent experiments.

IC_{50} (g/L)		
Ascorbic Acid	Acetonic Extract	Aqueous Extract
2.8 \pm 0.1	3.1 \pm 0.3	3.3 \pm 0.3

The total phenolic acid and flavonoid contents of acetonic and aqueous extracts were measured by the Folin–Ciocalteu and aluminum chloride colorimetric methods, respectively, for the following range of concentrations of *A. borbonica* (40, 30, 22.5, 16.9, 12.7, 9.5, 7.2, and 2.3 g/L) (Figure S1b,c). The highest phenolic content was exhibited by the acetonic extract with 1778.9 ± 34.1 (***) $p < 0.001$ (vs. 40 g/L of acetonic extract) mg GAE/100 g dried powder, followed by the aqueous extract with 1146.9 ± 14.7 mg GAE/100 g dried powder at a concentration of 40 g/L (Figure 1B). As shown in Figure 1C, the acetonic extract exhibited the highest flavonoid content with 1005.6 ± 19.3 mg QE/100 g dried powder, followed by the aqueous extract with 648.3 ± 8 (***) $p < 0.001$ (vs. 40 g/L of acetonic extract) mg QE/100 g dry powder at the concentration of 40 g/L.

2.2. Characterization of Polyphenols from *Antirhea borbonica* Acetonic Extract

In order to determine the composition of *A. borbonica* acetonic extract, a high-resolution accurate mass spectrometry analysis was performed using a Q-Exactive™ Plus mass spectrometer (Table 2). The identification of polyphenols was based on their exact mass, their elemental composition, and their fragmentation behavior (Figure S2), in comparison with standards and databases. The high-resolution accurate mass spectrometry analysis revealed the presence of 19 compounds, including phenolic acids and flavonoids in *A. borbonica* acetonic extracts (Table 2). Similar profiles were obtained from the *A. borbonica* aqueous extract (Table S1).

Table 2. Identification of 19 compounds in the *Antirhea borbonica* acetonic extract by LC-UV-HESI-MS/MS in negative mode.

Peak Number	RT (min)	Compound	Molecular Formula	Mass Error (ppm)	[M – H] [–]	MS/MS Fragments	mzCloud Best Match (%)
1	0.52	D-Quinic acid	C ₇ H ₁₂ O ₆	0.4	191.0554	111.0076	85.5
2	2.17	Protocatechuic acid	C ₇ H ₆ O ₄	0.13	153.0184	109.0283	82.7
3	2.63	3-Caffeoylquinic acid	C ₁₆ H ₁₈ O ₉	1.03	353.0877	191.0554, 179.0343, 173.0447, 135.0441	85
4	3.47	5-Caffeoylquinic acid	C ₁₆ H ₁₈ O ₉	1.03	353.0877	191.0554, 179.0343, 173.0447, 135.0441	88.3
5	3.68	Caffeic acid	C ₉ H ₈ O ₄	0.2	179.0341	135.0441	80.2
6	4.09	<i>p</i> -Coumaroyl quinic acid isomer	C ₁₆ H ₁₈ O ₈	1.3	337.0931	191.0550, 173.0446, 163.0392	84.6
7	4.18	<i>p</i> -Coumaroyl quinic acid isomer	C ₁₆ H ₁₈ O ₈	1.3	337.0931	191.0550, 173.0446, 163.0392	84.6
8	4.2	<i>o/m</i> -Coumaric acid	C ₉ H ₈ O ₃	0.2	163.0391	119.049	81.2
9	4.36	Feruloylquinic acid	C ₁₇ H ₂₀ O ₉	0.5	367.1035	191.0550, 173.0446	–
10	4.43	<i>p</i> -Coumaric acid	C ₉ H ₈ O ₃	0.1	163.0391	119.049	81.2
11	4.74	Quercetin-3- <i>O</i> -rutinoside (Rutin)	C ₂₇ H ₃₀ O ₁₆	1.6	609.1466	300.0274	94.8
12	4.94	Quercetin-3- <i>O</i> -galactoside	C ₂₁ H ₂₀ O ₁₂	1.33	463.0884	300.0274	90.9
13	5.01	Quercetin-3- <i>O</i> -glucoside	C ₂₁ H ₂₀ O ₁₂	1.33	463.0884	300.0274	90.9
14	5.26	Kaempferol- <i>O</i> -hexoside	C ₂₁ H ₂₀ O ₁₁	1.35	447.0935	284.0326	83.7
15	5.45	Kaempferol- <i>O</i> -hexoside	C ₂₁ H ₂₀ O ₁₁	1.35	447.0935	284.0326	83.7
16	5.82	3,5-Dicaffeoylquinic acid	C ₂₅ H ₂₄ O ₁₂	1.04	515.1196	353.0878, 191.0554, 179.0343, 173.0447, 135.0441	83.6
17	6.02	3,4-Dicaffeoylquinic acid	C ₂₅ H ₂₄ O ₁₂	1.04	515.1195	353.0878, 173.0447, 191.0554, 179.0343, 135.0441	88.1
18	6.2	4-Caffeoylquinic acid	C ₁₆ H ₁₈ O ₉	1.03	353.0877	173.0447, 191.0554, 179.0343, 173.0447, 135.0441	86.3
19	6.36	1,4/4,5-Dicaffeoylquinic acid	C ₂₅ H ₂₄ O ₁₂	1.04	515.1194	353.0878, 173.0447, 191.0554, 179.0343, 135.0441	89.1

Chromatographic peak 1 (0.52 min) (Figure 2A) showed a precursor ion [M – H][–] at *m/z* 191.0554 with the predicted molecular formula C₇H₁₁O₆ (mass error 0.4 ppm), suggesting the presence of quinic acid. The MS2 spectrum (Figure S2a) indicated a base peak at *m/z* 111.0076, associated with the successive loss of two water molecules and a -CO₂ group from quinic acid.

Chromatographic peak 2 (2.17 min) showed a precursor ion [M – H][–] at *m/z* 153.0184, with the following composition of C₇H₅O₄ (mass error 0.13 ppm) and a MS2 base peak at *m/z* 109.0283, resulting from the removal of a -CO₂ group (Figure S2b). Assignment to protocatechuic acid was achieved using a commercial standard.

Chromatographic peaks 3, 4, and 18 showed a precursor ion [M – H][–] at *m/z* 353.0878, with the following predicted molecular formula of C₁₆H₁₇O₉ (mass error 1.03 ppm), suggesting the presence of caffeoylquinic acid isomers (CQA). Indeed, the MS2 spectra (Figure S2j,c,d) show the same fragmentation pattern, with a base peak at *m/z* 191.0554 due to the loss of caffeic acid moiety, and the main product ions at *m/z* 179.0343, corresponding to loss of quinic acid moiety; *m/z* 173.0447, corresponding to water loss from quinic acid; and *m/z* 135.0441, corresponding to loss of a -CO₂ group from caffeic acid. Among these three isomers, only peak 18 (6.2 min) had an MS2 base peak at *m/z* 173.0447, allowing the identification of 4-CQA, which is consistent with the 4-acylated mono-acyl CGAs [17] (Figure S2j). Peaks 3 (2.63 min) and 4 (3.47 min) (Figure 2A) can be easily distinguished by their fragmentation. These peaks had both the same MS2 base peak at *m/z* 191.0554, which is consistent with 3-CQA and 5-CQA acylation but different intensities for the MS2 ion at *m/z* 179.0343, as previously reported [18–20]. They were identified as 3-CQA and 5-CQA, respectively (Figure S2c,d).

Chromatographic peak 5 (3.68 min) had a precursor ion [M – H][–] at *m/z* 179.0350, with a predicted molecular formula C₉H₇O₄ (mass error 0.2 ppm), suggesting the presence of caffeic acid. A MS2

base peak was observed at m/z 135.0441, corresponding to the loss of $-CO_2$ group from caffeic acid. Furthermore, its identity was confirmed by comparing the fragmentation spectra and retention time of a caffeic acid reference standard.

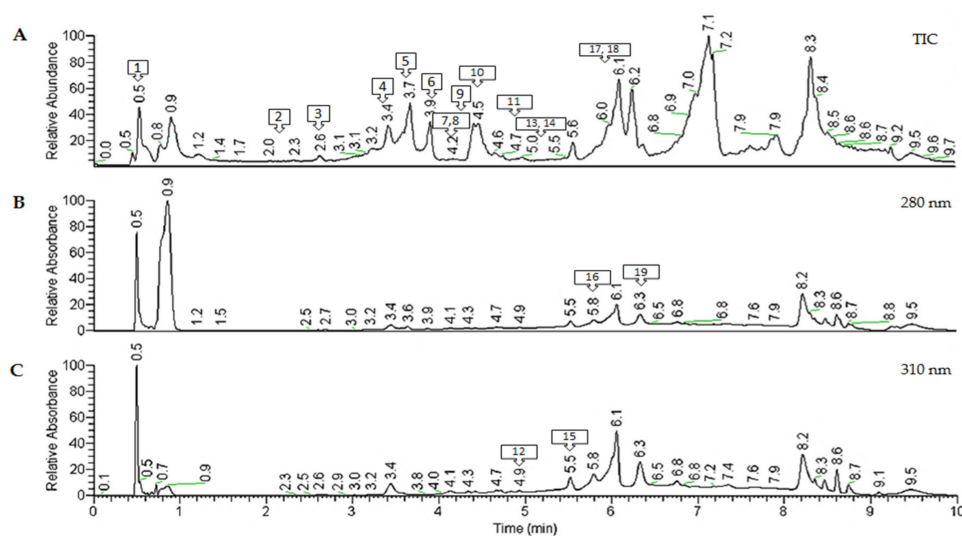


Figure 2. Spectra obtained for a representative *A. borbonica* acetone-evaporated extract. (A) Representative total ion chromatogram (TIC) obtained in negative mode. (B) UHPLC-UV chromatograms obtained at 280 and 310 nm (C). The different molecules are numbered according to their retention times.

Chromatographic peaks 6 (4.09 min) and 7 (4.18 min) showed a precursor ion $[M - H]^-$ at m/z 337.0931, which has the predicted molecular formula $C_{16}H_{17}O_8$ (mass error 0.1 ppm), corresponding to *p*-coumaroylquinic acid isomers (*p*-CoQA). These two peaks had the same MS2 base peak at m/z 191.0550 and secondary ions at m/z 173.0446 and 163.0392, corresponding to the dehydrated forms of quinic acid and coumaric acid, respectively. Peaks 6 and 7 were identified as 3- or 5-*p*-coumaroylquinic acids [21,22] (Figure S2l,m).

Chromatographic peaks 8 (4.2 min) and 10 (4.43 min) with a precursor ion $[M - H]^-$ at m/z 163.0391, which had the predicted molecular formula $C_{16}H_{17}O_9$ (mass error 0.2 ppm), could be coumaric acid isomers. Indeed, these two peaks had the same MS2 ion at m/z 119.049, corresponding to the removal of a $-CO_2$ group from coumaric acid. The identification was further confirmed by comparing the MS2 fragmentation behavior and the retention time of a *p*-coumaric acid reference standard. Therefore, peak 8 was identified as *m/o*-coumaric acid and peak 10 as *p*-coumaric acid (Figure S1p).

For the chromatographic peak 9 (4.36 min), a precursor ion $[M - H]^-$ at m/z 367.1035 with a predicted molecular formula $C_{17}H_{19}O_9$ (mass error 0.5 ppm) was detected, suggesting the presence of feruloylquinic acid (FQA). The MS2 base peak at m/z 191.0550, associated with quinic acid and a product ion at m/z 173.0444, was often found for the 5-FQA [23] (Figure S2o).

Chromatographic peak 11 (4.74 min) shows a precursor ion $[M - H]^-$ at m/z 609.1464, with the following composition of $C_{27}H_{29}O_{16}$ (mass error 1.6 ppm) and an MS2 base peak at m/z 300.0274, resulting from the neutral loss of a disaccharide rutinose linked to quercetin. Its identification as quercetin-3-*O*-rutinoside (rutin) was confirmed by comparing the MS2 fragmentation pattern and the retention time of its commercial standard (Figure S1e).

Chromatographic peak 12 (4.94 min) and 13 (5.01 min) show a precursor ion $[M - H]^-$ at m/z 463.0884, with the following composition of $C_{21}H_{19}O_{12}$ (mass error 1.33 ppm) and an MS2 base peak at m/z 300.0274, resulting from the neutral loss of a hexose linked to quercetin. Their identification as quercetin-3-*O*-galactoside (hyperoside) (peak 12) and quercetin-3-*O*-glucoside (peak 13) (Figure S2f) was solved by comparing their MS2 fragmentation pattern and their retention time to a hyperoside commercial standard that allowed a reliable discrimination.

For the chromatographic peaks 14 (5.26 min) and 15 (6.45 min), a precursor ion $[M - H]^-$ at m/z 447.0935 with the predicted molecular formula $C_{21}H_{19}O_{11}$ (mass error 1.35 ppm) was detected, suggesting the presence of kaempferol hexosides. The MS2 base peak at m/z 284.0326 was linked to the loss of the hexoside part, which reinforced their identification (Figure S2g).

For the chromatographic peaks 16, 17, and 19, a precursor ion $[M - H]^-$ at m/z 515.1195 with a predicted molecular formula of $C_{25}H_{23}O_{12}$ (mass error 1.04 ppm) was detected, suggesting the presence of di-caffeoylquinic acid isomers (di-CQA). The main MS2 product ions were at m/z 353.0878, due to the loss of the caffeic acid moiety; m/z 191.0554, corresponding to quinic acid; m/z , 179.0342 corresponding to caffeic acid; m/z 173.0447, corresponding to a dehydrated quinic acid; and m/z 135.0440, corresponding to a decarboxylated form of caffeic acid. Interestingly, among these four isomers, only peak 16 (5.82 min) had an MS2 base peak at m/z 191.0554, allowing the identification of 3,5-diCQA (Figure S2h). The other three isomers had an MS2 base peak at m/z 173.0447, which is consistent with the 4-acylated mono-acyl CGAs. In this way, the peak 17 (6.02 min) was assigned to 3,4-diCQA due to a higher intensity of the quinic acid product ion (m/z 191.0554) than the remaining peaks (Figure S2i). Due to the lack of standards, peak 19 (6.36 min) was tentatively characterized as either 1,4-diCQA or 4,5-diCQA (Figure S2q) [17,18]. Of note, for most of the identified compounds we found an 80% coverage with the MS2 spectra from the mzCloud Database.

Phenolic Acids Quantification by UHPLC-HESI-MS

The quantification by mass spectrometry highlighted a high abundance of cinnamic and benzoic acid derivatives in both extracts (Table 3, Figure S3). Most of the compounds were found in significantly higher concentrations in acetonic versus aqueous extracts: 0.002162 vs. 0.000703 mg/mL for caffeic acid, 0.007596 and 0.001437 mg/mL for dicaffeoylquinic acids isomers, and 0.004070 and 0.002415 mg/mL for protocatechuic acid. Interestingly, the concentration of caffeoylquinic acid isomers (5-CQA/3-CQA) was higher in the aqueous relative to the acetonic extracts (0.010163 vs. 0.005559 mg/mL). Indeed, the total amount of phenolic acids and flavonoids is higher in the acetonic extract than in the aqueous extract. These results highlight a notable amount of phenolic acids in both *A. borbonica* extracts.

Table 3. Quantification of polyphenols-rich acetonic and aqueous extracts from *A. borbonica* by HPLC-HESI-MS. The analysis was performed using a Q-Exactive™ Plus mass spectrometer at a concentration of 40 g/L. The concentrations of the different compounds were expressed as ng/mL. Data are the mean \pm SD of three independent experiments. * $p < 0.05$, ** $p < 0.01$ ***, $p < 0.001$ (vs. 40 g/L of acetonic extract). CQA: caffeoylquinic acid. Di-CQA: dicaffeoylquinic acid.

Peak		Concentration in Acetonic Extract (mg/mL)	Concentration in Aqueous Extract (mg/mL)
Phenolic Acids			
5	Caffeic acid	0.002162 \pm 0.000066	0.000703 \pm 0.000039 ***
10	<i>p</i> -Coumaric acid	0.002755 \pm 0.000728	0.001768 \pm 0.000176 *
8	<i>m/o</i> -Coumaric acid	0.000470 \pm 0.000003	0.000208 \pm 0.000004
4	5-CQA	0.004718 \pm 0.000279	0.008558 \pm 0.000477 ***
3	3-CQA	0.000840 \pm 0.000093	0.001604 \pm 0.000157 ***
17	3,4-diCQA	0.004704 \pm 0.000326	0.000503 \pm 0.000034 ***
19	1,4/4,5-diCQA	0.000262 \pm 0.000020	0.000090 \pm 0.000003 **
16	3,5-diCQA	0.002629 \pm 0.000161	0.000842 \pm 0.000029 ***
2	Protocatechuic acid	0.004070 \pm 0.000250	0.002415 \pm 0.000387 ***
	Total	0.023061	0.016693
Flavonols			
11	Quercetin-3- <i>O</i> -rutinoside	0.011933 \pm 0.002018	0.003977 \pm 0.000473 ***
12	Quercetin-3- <i>O</i> -galactoside	0.001791 \pm 0.000204	0.000591 \pm 0.000033 ***
14/15	Kaempferol hexosides	0.000216 \pm 0.000054	0.000044 \pm 0.000005 **
	Total	0.013941	0.004612

Quantification by mass spectrometry confirmed the abundance of flavonol derivatives in both extracts (Table 3, Figure S3). Interestingly, we found three times more quercetin-3-O-rutinoside and quercetin-3-O-galactoside in the acetonic than in the aqueous extract, and five times more kaempferol-hexoxides in the acetonic than in the aqueous extract. These results confirmed the presence of notable amounts of flavonoids in both *A. borbonica* extracts.

2.3. Zebrafish Embryo and Larvae Acute Toxicity Test

Survival and Lethality Curves on Zebrafish Embryos

In order to investigate the toxic effect of polyphenols-rich acetonic and aqueous extracts from *A. borbonica*, a Fish Embryo Acute Toxicity (FET) test was performed according to the OECD guidelines [24]. Briefly, fertilized zebrafish eggs (0–3 hpf) were incubated with different concentrations of *A. borbonica* (acetonic or aqueous extract) until 96 hpf (developmental day 4), the extract being freshly renewed every day. Within the first day (0–24 hpf), none of the embryos survived at the highest concentrations of acetonic (16.9 g/L) and aqueous (40–22.5 g/L) extracts (Figure 3A,B) as shown by the coagulated eggs (Figure 4A, representative picture).

Obviously, the mortality rate is dose-dependent (Figure 3A–F). As shown in Figure 3C,D, the median lethal concentration (LC_{50}) corresponding to the concentration that induced a 50% mortality was lower with the acetonic extract than with the aqueous extract (5 ± 0.2 vs. 17.6 ± 1.7 g/L, respectively), demonstrating the higher toxicity of the acetonic extract. At non-lethal concentrations (2.3 and 7.2 g/L for acetonic and aqueous extracts, respectively), incubation with polyphenols-rich acetonic and aqueous extracts from *A. borbonica* leads to developmental delay and malformations (Figure 4A–D). Although a 90% hatching was measured in the E3 medium, a significant decrease of 75% and 38% in hatching was observed at 96 hpf for the acetonic (2.3 g/L) and aqueous (7.2 g/L) extracts, respectively. This percentage reached 0% at 7.2 g/L (acetonic) and 9.5 g/L (aqueous) (Figure 4B). For the hatched embryos who have been exposed to the two types of extracts, we observed $21 \pm 3\%$ and $15 \pm 1.6\%$ pericardial edema with 2.3 g/L of acetonic and aqueous extracts, respectively, this percentage reaching 50% with 7.2 g/L of aqueous extract (Figure 4C). Spinal curvature was observed in $14 \pm 2\%$ and $15 \pm 1.5\%$ of these hatched embryos exposed, respectively, to acetonic and aqueous extracts, and reached 50% at 7.2 g/L of aqueous extract of *A. borbonica* (Figure 4A). Taken together, these data demonstrate the deleterious impact of such non-lethal concentrations during zebrafish development.

The toxicity of polyphenols-rich acetonic and aqueous extracts from *A. borbonica* was also studied in zebrafish larvae from 3 to 5 dpf. Indeed, at 3 dpf the swimming larvae already displayed functional livers and kidneys, allowing them to metabolize a variety of compounds [25–27]. As a consequence, the toxicity of the respective extracts could be different in zebrafish embryos and larvae. By treating the zebrafish larvae for 2 days in a way similar to the embryos, the respective LC_{50} values were determined for both extracts (Figure 3E,F). In embryos, the LC_{50} is higher with the aqueous extract than with the acetonic one (20.3 g/L vs. 5.6 ± 0.4 g/L). In addition, although no significant differences in LC_{50} were observed between the embryos and larvae, the LC_{50} is weakly higher for larvae than for embryos (20.3 g/L vs. 17.6 ± 1.7 g/L, respectively). Our data strongly suggest that even at non-lethal concentrations, these extracts can lead to developmental defects.

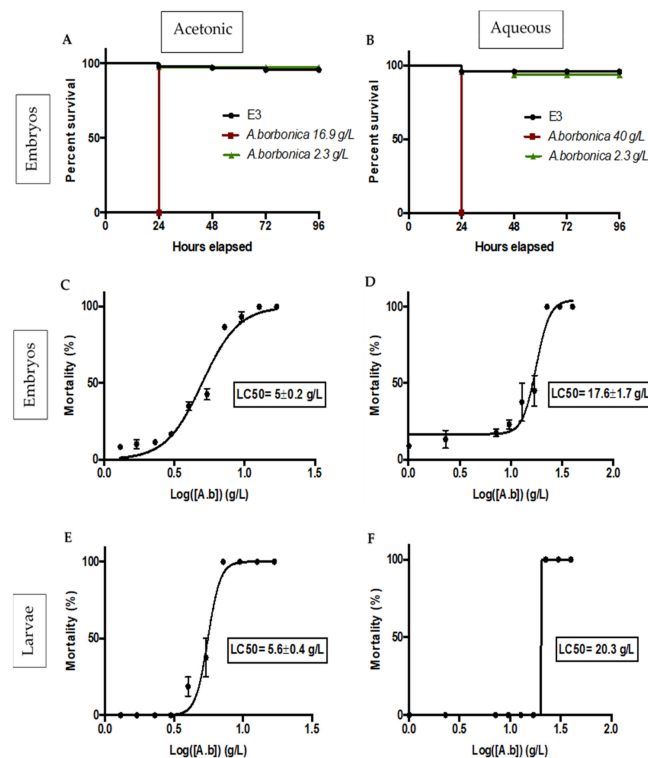


Figure 3. Survival curves for 96 hpf zebrafish embryos exposed with acetonic (A) or aqueous (B) extracts from *A. borbonica* at high concentrations of 16.9 g/L (acetonic) and 40 g/L (aqueous) and a low concentration of 2.3 g/L (acetonic and aqueous), and E3 was considered as control. Median lethal concentration curves (LC₅₀) for 96 hpf zebrafish embryos and 72 hpf larvae exposed to acetonic (C,E) or aqueous (D,F) extracts at different concentrations ranging from 16.9 to 1.3 g/L (acetonic) and 40 to 2.3 g/L (aqueous) for 4 and 2 days, respectively. The LC₅₀ values were expressed in g/L. Data are the mean ± SD of three independent experiments.

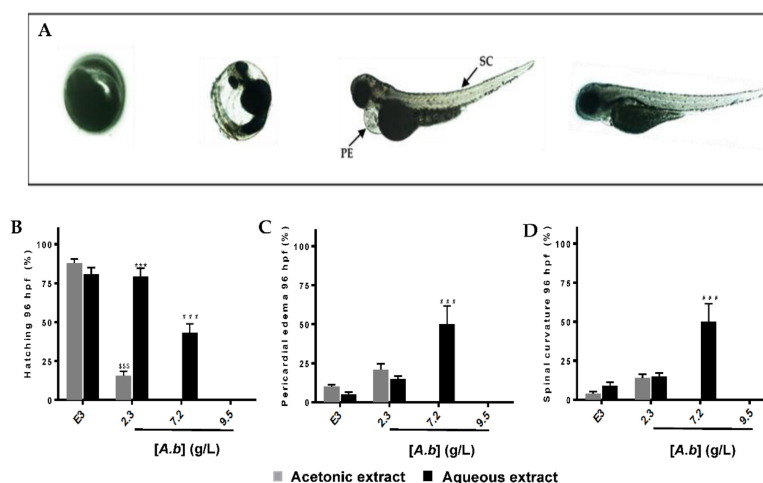


Figure 4. Morphological malformations and delayed development of zebrafish embryos/larvae exposed to *A. borbonica* extracts. (A) From left to right, coagulated egg (at 24 hpf), delayed hatching, spinal curvature, pericardial edema, and control embryos/larvae (96 hpf). Arrows indicate the presence of pericardial edema (PE) and spinal curvature (SC). Hatchability rates after 4 days of exposure with acetonic and aqueous extracts at 2.3, 7.2, and 9.5 g/L are represented in (B–D) represent the percentage of PE and SC, respectively. E3 medium was used as a positive control. Data are the mean ± SD of three independent experiments. \$\$\$ $p < 0.001$ (vs. E3 (acetonic)), *** $p < 0.001$ (vs. acetonic extract), and ### $p < 0.001$ (vs. E3 (aqueous)).

3. Discussion

Over the years, natural phenolic compounds have represented major preventive and/or therapeutic compounds for improving health issues. Indeed, many epidemiological studies have exhibited the beneficial effect of a polyphenol-rich diet on cancer, diabetes, obesity, and cardiovascular and neurodegenerative diseases [28–35]. Réunion island, a famous biodiversity hotspot, exhibits a wide and rich flora, with 22 medicinal plants registered to the French pharmacopeia [9]. These plants are known for their use in traditional medicine [3] and have been reported to be rich in polyphenols [36]. However, they are only poorly characterized concerning their contents, toxicities, and real in vivo preventive and/or therapeutic properties.

Among these medicinal plants, *A. borbonica*, belonging to the *Rubiaceae* family, is particularly interesting, as it widely used in traditional medicine for treating, among other thing, diabetes, urinary tract infections, diarrhea, hemorrhage, rheumatism, and also kidney stones [10]. Interestingly, in an ischemia-reperfusion stroke mouse model exposed to hyperglycemia, *A. borbonica* polyphenols display neuroprotective effects, preventing the elevation of the brain pro-inflammatory cytokine (IL-6) level and exerting its antioxidant property by decreasing reactive oxygen species (ROS) [13]. More recently, a preventive protective effect of *A. borbonica* aqueous extract was evidenced in a diet-induced overweight model in zebrafish displaying oxidative stress and blood–brain barrier leakage [14].

In this work, to the best of our knowledge, we performed for the first time an in-depth characterization of the polyphenol content of *A. borbonica* aqueous and acetonic extracts, demonstrating the presence of new molecules never described before for that plant. Furthermore, although used in humans, the safety profile of *A. borbonica* is largely unknown and no toxicological studies have been carried out so far. We consequently provided data concerning the toxicity of the *A. borbonica* aqueous and acetonic extracts on relevant in vivo physiological models using zebrafish embryos and larvae.

3.1. Polyphenol Content of Aqueous and Acetonic Extracts

A quantification by high-resolution mass spectrometry of the acetonic and aqueous extracts revealed the presence of polyphenol derivatives belonging to the phenolic acid and flavonoid classes known to be the most abundant in plant and plant-based foods [37,38]. From a qualitative point of view, no difference was observed between both extracts. Interestingly, although herbal infusion allows a very powerful polyphenol extraction yield, from a quantitative point of view the total amount of phenolic acids and flavonoids remains a little higher in the acetonic extract than in the aqueous extract. This result was expected, since it is well known that the polyphenol solubility depends on the solvent polarity and the kind of extraction used [39–41].

In this work, we have identified 19 main polyphenols. Among them, we observed that the major compounds of both extracts were quercetin-3-*O*-rutinoside, caffeoyl- and dicaffeoyl-quinic acids isomers, protocatechuic acid, coumaric acids isomers, and caffeic acid. These results were consistent with previous ones reported from our laboratory [5]. However, we provide a significant input to this previous work, since our MS² spectral analysis identified new compounds such as quercetin-3-*O*-rutinoside, protocatechuic acid, and coumaric acids isomers.

The identification of these new compounds could be explained by a different geographical location of *A. borbonica* leading to different environmental conditions, such as moisture, illumination, altitude, and temperature [42]. Furthermore, in these previous studies, conventional C18 reverse-phase column was used, while in the present study we used a pentafluorophenyl-phase column known to offer a greater selectivity for several compound classes such as aromatic and isomeric compounds, achieved not only by hydrophobic interactions as C18 reverse-phase but also by aromatic, π - π , dipole–dipole, and ionic interactions and hydrogen bonding [43].

High phenolic acid and flavonoid contents are often associated with a high antioxidant capacity of the plant extract [44,45]. These compounds are characterized by one or several aromatic rings with at least one hydroxyl group [37]. This particular chemical structure conferred them different antioxidant activities due to their ability to directly scavenge free radicals by donating protons/electrons [46,47] or

by activating antioxidant signaling pathways [48]. Interestingly, the DPPH experiment highlighted the strong capacity of both extracts to reduce DPPH radicals due to their high content in bioactive molecules. These high antioxidant properties for the acetonic extract are consistent with a previous study [5].

3.2. Aqueous and Acetonic Extracts of *Antirhea borbonica* Exhibit Developmental and Toxicity at High Concentrations

Despite the beneficial effects of natural polyphenols, the safe consumption of beverages from medicinal plants remains poorly studied. Indeed, polyphenols can also display adverse effects, including carcinogenic/genotoxic ones; act as endocrine disruptors; disturb iron absorption; and also interact with drugs [49]. We consequently decided to investigate for the first time the potential toxicity of the medicinal plant *A. borbonica* using the zebrafish model. Whilst the classical approach for the assessment of drug and plant extract toxicity is time consuming, expensive, and requires in vitro and in vivo models (mainly rodents), the zebrafish embryo model emerged as a relevant tool for a first toxicological screening approach. This developmental model is widely used to assess drug toxicity [15] and appears as a relevant model, given its strong genic homology (more than 70% of human genes have an orthologue in zebrafish). As well, zebrafish display many evolutionary conserved organs and physiological processes [16] and exhibit a high fertility rate as well as transparent eggs, allowing their easily monitoring at the different stages of organogenesis [50].

In the present study, we used the Fish Embryo Acute Toxicity test (FET) designed by OECD and known to be a reference in the field [24]. At the highest doses tested (40–16.9 g/L), a 100% mortality was observed at 24 hpf for both extracts, in spite of the chorion presence, which potentially acts as a barrier. The toxicity of both plant extracts evidenced that the acetonic extract was more toxic than the aqueous extract (LC_{50} : 5 ± 0.2 g/L vs. 17.6 ± 1.7 g/L, respectively). Such a toxicity may be associated with the high bioactivity of the plant extracts or the presence of other phytochemical compounds, such as alkaloids and terpenes, known to be produced for defense against abiotic and probiotic stresses in plants. Previous studies have reported that alkaloids significantly contribute to the toxic effect of various plants [51–53].

Interestingly, for the highest non-lethal concentrations (2.3 g/L (acetonic), 7.2 g/L (aqueous)), we observed a delay in hatching in a concentration- and exposure time-dependent manner. A significant hatching reduction of 38% and 75% was observed at 96 hpf for the aqueous (7.2 g/L) and acetonic (2.3 g/L) extracts, respectively. Hatching normally occurs between 72 and 96 hpf. Although this remains to be investigated, we can speculate that the delayed hatching observed in our experimental conditions for the treated embryos may be induced by an impairment in the hatching process, such as the production-secretion of hatching enzymes (zhe1), cathepsin L (catL1), involved in this physiological process [54], as well as in the expression of genes (Zip10 and Znt1a) involved in zinc metabolism that are known to be essential in the development of the hatching gland [55]. In the chorion, a decrease in larvae motricity due to a delay in the muscular development or an altered larval morphology may also explain the delayed hatching.

As well, we noticed several malformations such as spinal curvature and the presence of pericardium edema. These defects are known to occur in the presence of toxic molecules, leading to kidney impairments or kidney malformations [56–58]. Further investigations are needed to identify the presence of compounds or metabolites inside the zebrafish embryos responsible for the acute toxicity of *A. borbonica* extracts.

We also aimed at identifying the potential toxicity of our extracts in larvae (from 3 to 5 dpf). At 3 dpf, zebrafish larvae exhibit functional livers and kidneys, suggesting the possible metabolism of several compounds [59,60]. Interestingly, the study of the toxicity of polyphenols-rich acetonic and aqueous extracts from *A. borbonica* in zebrafish larvae from 3 to 5 dpf revealed no significant differences in the median lethal concentrations between the larvae and embryos, with 5 ± 0.2 vs. 5.6 ± 0.4 g/L and 17.6 ± 1.7 vs. 20.3 g/L for acetonic and aqueous extracts, respectively.

Medicinal plants known as “green gold” have been widely used in traditional medicine for centuries across the world. The relatively toxic effect of the medicinal plant relies on different parameters, such as the plant part used, composition, preparation method, and concentration. Among plant-based beverage preparations, the infusion is the most commonly used after decoction. Therefore, we studied the potential toxic effect of an aqueous extract from *A. borbonica* on zebrafish embryos. A median lethal concentration of 17.6 ± 1.7 g/L was found. This concentration is higher than the concentration recommended by the herbalist for this method of preparation, around 1–4 g for 1 L. However, we must remain vigilant about taking this aqueous extract, which can have teratogenic effects, especially during pregnancy.

4. Materials and Methods

4.1. Reagents/Standards

Folin-Ciocalteu reagent, sodium carbonate, sodium nitrite, aluminum chloride, DPPH, caffeic acid, caffeoyquinic acid, *p*-coumaric acid, protocatechuic acid, kaempferol, hyperoside, rutin hydrate, and dimethylsulfoxide (DMSO) were purchased from Sigma Aldrich (St. Louis, MO, USA). Solvents such as acetone, acetonitrile, methanol, and water (HPLC-MS grade) were purchased from Carlo erba (Peypin, France).

4.2. Plant Material

Antirhea borbonica J.F Gmelin (*A. borbonica*) powder (leaves) was obtained from APLAMEDOM institute (Association pour les plantes aromatiques et médicinales de La Réunion) and registered under the following code, DéTROI.002/2018, stating the date of collection and the GPS coordinates (21°05′44.9″ S, 55°39′06.6″ E), altitude: 770 m. The pharmacist and director of APLAMEDOM performed the botanical identification of *A. borbonica*. The dried (air-dried protected from direct light) leaves were reduced to powder using a laboratory grinder. The crushed leaves of *A. borbonica* were conserved at -20 °C.

4.3. Preparation of the Plant Extracts

Acetonic extract from *A. borbonica* was obtained after dissolving 1 g of crushed leaves in 25 mL of an aqueous acetonic solution (70%, *v/v*). After incubation at 4 °C for 90 min, the mixture was centrifuged at 3500 rpm at 4 °C for 20 min and the polyphenol-rich supernatant was collected and dried using a rotary evaporator. The extract was resuspended with an identical volume of E3 medium (classical embryonic medium), filtered with a 20 µm membrane, and stored at -20 °C until analysis.

Aqueous plant extract (40 g/L) was prepared by the infusion technique. Briefly, 1 g of crushed leaves was added to 25 mL of boiled E3 medium for 10 min under stirring. The resultant extract was filtered with a 20 µm membrane, aliquoted, and stored at -20 °C until analysis.

For a toxicity test using fertilized eggs and larvae zebrafish, aqueous extract was prepared every day extemporaneously.

4.4. Measurement of the Total Antioxidant Capacity of Polyphenol-Rich Plant Extracts

The total antioxidant capacity was assessed using the 2,2-Diphenyl-1-picrylhydrazyl (DPPH) radical scavenging assay. Briefly, in a 96-well microplate, 200 µL of a 0.25 mM DPPH solution and 40 µL from different concentrations (40–2.5 g/L (GAE)) of acetone-evaporated or aqueous extracts were added and incubated at 25 °C for 30 min. Ascorbic acid solutions prepared at the same concentration range (gallic acid equivalent) were used as an antioxidant standard. The absorbance (Abs) was read at 517 nm (FLUOstar Optima, Bmg Labtech, Offenburg, Germany). The percentage of the free radical-quenching activity of DPPH was calculated from the following formula:

$$\text{Antioxidant capacity (\%)} = \left[\frac{(\text{Abs}_{\text{control}} - \text{Abs}_{\text{sample}})}{\text{Abs}_{\text{control}}} \right] \times 100. \quad (1)$$

Inhibitory concentration (IC₅₀) values corresponding to the concentrations reducing 50% of the initial DPPH• values were obtained by plotting the percentage of free radical-quenching activity against the logarithm of the different concentrations ranging from 16.9 to 1.4 g/L (acetic) and 40 to 2.5 g/L (aqueous). Once the concentration values were transformed, a nonlinear regression (log (inhibitor) vs. response-variable slope) was applied to obtain a sigmoid curve.

4.5. Determination of Phenolic Acid Content

The total phenolic acid contents in acetone-evaporated and aqueous extracts were determined by using the Folin–Ciocalteu assay [61] with slight modifications. Briefly, in a 96-well microplate, 25 µL of plant extract, 125 µL of Folin–Ciocalteu's phenol reagent (Sigma Aldrich), and 100 µL of 75 g/L sodium carbonate (Sigma) were added and incubated at 50 °C for 15 min and then at 4 °C for 3 min. The absorbance was measured at 760 nm (FLUOstar Optima, Bmg Labtech). A calibration curve between 12.5 and 300 µM was prepared using a standard solution of gallic acid (Sigma-Aldrich, Darmstadt, Germany). The total phenolic acid contents were expressed as the mg gallic acid equivalent (GAE) per 100 g of dried plant powder.

4.6. Determination of Flavonoid Content

The total flavonoid content was determined using the aluminum chloride (AlCl₃) colorimetric assay adapted from Zhishen et al. [62]. For this measurement, 100 µL of sample was mixed in a 96-well microplate with 6 µL of 5% aqueous sodium nitrite (NaNO₂) solution. After 5 min, 6 µL of 10% aqueous AlCl₃ were added and the mixture was vortexed. Then, after 1 min incubation, 40 µL of 1 M NaOH was added. The absorbance was read at 510 nm (FLUOstar Optima, BMG Labtech). A calibration curve between 6.25 and 300 µM was prepared using a standard solution of quercetin. The total flavonoid contents were expressed as the mg quercetin equivalent (QE) per 100 g of dried plant powder.

4.7. Polyphenolic Compounds Identification and Quantification LC-UV-HESI-MS/MS

Polyphenols extracted from *A. borbonica* acetone-evaporated or aqueous extracts were identified by ultra-high-performance liquid chromatography, coupled with diode array detection and HESI-Orbitrap mass spectrometer (Q-Exactive™ Plus, Thermo Scientific, Waltham, MA, USA). Briefly, 10 µL of the sample was injected using an UHPLC system equipped with a Thermo Fisher Ultimate 3000 series WPS-3000 RS autosampler and then separated on a PFP column (2.6 µm, 100 mm × 2.1 mm, Phenomenex, Torrance, CA, USA). The column was eluted with a gradient mixture of 0.1% formic acid in water (A) and 0.1% formic acid in acetonitrile (B) at the flow rate of 0.450 mL/min, with 5% B at 0.00 to 0.1 min, 35% B at 0.1 to 7.1 min, 95% B at 7.2 to 7.9 min, and 5% B at 8.0 to 10 min. The column temperature was held at 30 °C and the detection wavelengths were set to 280 and 310 nm, allowing the identification of phenolic acids and flavonoids, respectively.

For the mass spectrometer conditions, a Heated Electrospray Ionization source II (HESI II) was used. Nitrogen was used as the drying gas. The mass spectrometric conditions were optimized as follows: spray voltage 2.8 kV, capillary temperature 350 °C, sheath gas flow rate 60 units, aux gas flow rate 20 units, and S lens RF level 50. Mass spectra were registered in full scan mode from *m/z* 100 to 1500 in negative ion mode at a resolving power of 70,000 FWHM at *m/z* 400. The automatic gain control (AGC) was set at 1e6. The MS/MS spectra were obtained by applying a relative higher energy collisional dissociation (HCD) energy of 25%. The identification of the compounds of interest was based on their retention time, exact mass, elemental composition, MS fragmentation pattern, and comparisons with available standards and the advanced mass spectral database, *m/z* Cloud, <https://www.mzcloud.org>. Data were acquired with the XCalibur 4.1 software (Thermo Fisher Scientific Inc.) and processed with the compound discoverer 2.1 and the Skyline 20.1 software (MacCoss Lab.) 1×10^6 .

Preparation of Standard Solution, Calibration Curves, and Method Validation

Standard stock solutions of caffeic acid, caffeoylquinic acid, kaempferol, quercetin-3-*O*-rutinoside, quercetin-3-*O*-galactoside, protocatechuic acid, and coumaric acid were dissolved in methanol at a concentration of 1 mg/mL. A mixed stock solution containing 10 µg/mL of each polyphenol standard was prepared in methanol. The calibration standard solutions were prepared by the dilution of the mixed stock solutions in 0.1% formic acid in water to obtain the desired calibration curves ranging from 10 to 4000 ng/mL. The quality control (QC) samples were prepared at 25, 250, and 4000 ng/mL and analyzed in triplicate within each batch.

The calibration curves were built by plotting the peak area of the analytes against the corresponding analytes concentrations with linear regression using standard samples at nine concentrations. The calibration curves of each polyphenol had a correlation coefficient (R^2) of 0.99. The method accuracy was estimated by calculating the percent deviation observed in the analysis of QC samples and expressed by relative error. The intraday precision was estimated by analyzing QC samples at three concentration levels (25, 250, 4000 ng/mL) of the seven analytes within 24 h ($n = 8$). The inter-day accuracy was estimated by the repeated analysis of QC samples ($n = 8$).

The variability was expressed as the relative standard deviation (RSD, %), and the accuracy was expressed as the relative error (RE, %). The limit of quantification (LOQ) was defined as the lowest analytical concentration of the calibration curve at which the measured precision, expressed as relative standard deviation (RSD), was within 20% and the accuracy, expressed as relative error (RE), was in the range of 20%.

4.8. Zebrafish Husbandry

Adult AB wildtype zebrafish (*Danio rerio*, AB strain) were housed in the zebrafish facility of the CYROI/DéTROU, La Réunion (A974001). They were maintained under the standard conditions of photoperiod (14 h dark/10 h light), temperature (28.5 °C), conductivity (400 µS), and pH (7.4). Zebrafish were fed daily (3 times a day) with commercially available food (Planktovie, GEMMA 300). All the animal experiments were performed in CYROI/DéTROU (UMR 1188) and conducted in accordance with the French and European Community Guidelines for the Use of Animals in Research (86/609/EEC and 2010/63/EU).

4.9. Developmental Toxicity Test (Zebrafish Embryos)

The day before the start of the toxicity test assay, breeding males and females (optimal ratio 2:1) were placed in the same tank but were physically separated. The next day, 1 h after light onset, fish couples were allowed to spawn for 1 h. The eggs were collected, rinsed with fish water system, randomly mixed, and quickly distributed in the different concentrations of *A. borbonica* aqueous and acetone-evaporated extracts prepared with E3 medium. The treatment was performed between 1 and 3 h post fertilization (dpf) for embryos and between 3 and 5 dpf for larvae. The quality of the spawn (>70% of fertilization) was checked for fitting with the OECD recommendations (guidelines 236: Fish Embryo Acute Toxicity (FET) Test) [24]. The fertilized eggs were selected using a stereomicroscope and dispatched in a 24-well plate as follows: in each well, five fertilized eggs were placed in 2 mL of the respective concentrations of either *A. borbonica* aqueous extract (40, 30, 22.5, 16.9, 12.7, 9.5, 7.2, and 2.3 g/L) or *A. borbonica* acetone-evaporated extract (16.9, 12.7, 9.5, 7.2, 5.4, 4, 3, 2.3, 1.7, and 1.3 g/L) diluted in E3 medium. The concentration range was chosen on the basis of traditional use, which consists of infusion of 1–4 g of dried leaves in 1 L of boiled water for 10 min. Because *A. borbonica* has been registered at the French pharmacopeia, this concentration was supposed to be non-toxic in adults. Thus, the lowest doses tested were 2.3 and 1.3 g/L for aqueous and acetone-evaporated extract, respectively.

A total of 20 eggs or 10 larvae were tested for each concentration. These experiments were repeated three times independently. The 24-well plate was incubated at 26 °C ± 1 °C. Negative

controls (E3 medium only) and positive controls (E3 medium + 25% DMSO) were also placed in the 24-well plate.

The treatment was renewed each day using a freshly prepared *A. borbonica* extracts. Zebrafish development was carefully checked by using a stereo microscope (Nikon SMZ18) at 24, 48, 72, and 96 hpf looking at four apical observations as indicators of lethality according to the OECD guidelines 236: (i) coagulation of fertilized eggs, (ii) lack of somite formation, (iii) lack of detachment of the tail-bud from the yolk sac, and (iv) lack of heartbeat. At the end of the exposure period, the acute and developmental toxicity (teratogenicity) were determined according to the OECD ruled based on a positive outcome in any of the four apical observations recorded. The percentage of mortality was determined by using the following equation:

$$(\text{Mortality (\%)} = (\text{Number of dead embryos} / \text{Total number of embryos}) \times 100. \quad (2)$$

Lethal concentrations (LC₅₀) corresponding to the concentration that induced a 50% mortality were obtained by plotting the percentage of cumulative mortality at 96 hpf against logarithm of the different concentrations. A nonlinear regression (log (inhibitor) vs. response-variable slope) was applied to obtain a sigmoid curve. In addition, morphological abnormalities such as spinal curvature, delay in pigmentation, delay in eye color, and delay hatching were recorded.

4.10. Statistical Analyses

Data are expressed as the mean ± standard deviation (SD) from at least three independent experiments performed in triplicate. Statistical analyses and determination of IC₅₀/LC₅₀ were performed with Graph-Pad Prism 6.3 (GraphPad Software, Inc., San Diego, CA, USA). Comparison between more than 2 groups was determined using a one-way ANOVA followed by Dunnett's test. A *p*-value < 0.05 was considered statistically significant.

5. Conclusions

In this study, we identified new major polyphenols such as quercetine-3-*O*-rutinoside, protocatechuic acid, and coumaric acids isomers, which have to be taken into account regarding the anti-oxidant and anti-inflammatory effect of *A. borbonica*. We report for the first time the potential embryonic and larval toxicity at high concentrations of both acetonic and aqueous extracts from the medicinal plant *A. borbonica* by using the zebrafish embryo model. The present work will be useful to supplement current data on medicinal plants registered at the French pharmacopeia and more generally can be considered as a "proof of concept study" for the further analysis of medicinal plants.

Supplementary Materials: The following are available online. Figure S1: Total phenolic acid, flavonoid contents and antioxidant capacity from *A. borbonica* extracts. Figure S2: Fragmentation pattern of each identified compound obtained in negative mode. Figure S3: Quantification of polyphenols-rich acetonic and aqueous extracts from *A. borbonica* by UHPLC-ESI-MS. Table S1: Identification of 20 compounds in *Antirhea borbonica* herbal infusion by LC-HESI-UV-MS/MS in negative mode.

Author Contributions: Conceptualization: B.V., N.D. and J.-L.B.; data curation: B.V., B.G., M.B. and S.K.; formal analysis: B.V., N.D. and J.-L.B.; funding acquisition: J.-L.B. and O.M.; investigation: B.V., B.G., M.B. and S.K.; methodology: B.V. and M.B.; resources: N.D.; writing—original draft: B.V. and J.-L.B.; writing—review and editing: B.V., M.-P.G., O.M., N.D. and J.-L.B. All the authors have read and agreed to the published version of the manuscript.

Funding: This research was funded by the European Regional Development Funds (FEDER RE0022527 ZEBRATOX, EU-Région Réunion-French State national counterpart), the University of La Réunion, and the Institut National de la Santé et de la Recherche Médicale. Bryan Veeren is a recipient of a fellowship from the Région Réunion.

Conflicts of Interest: The authors declare no conflict of interest.

References

1. McDougall, I.; Chamalaun, F.H. Isotopic Dating and Geomagnetic Polarity Studies on Volcanic Rocks from Mauritius, Indian Ocean. *Geol. Soc. Am. Bull.* **1969**, *80*, 1419. [[CrossRef](#)]
2. Agnarsson, I.; Kuntner, M. The Generation of a Biodiversity Hotspot: Biogeography and Phylogeography of the Western Indian Ocean Islands. In *Current Topics in Phylogenetics and Phylogeography of Terrestrial and Aquatic Systems*; Anamthawat-Jnsson, K., Ed.; InTech: London, UK, 2012; ISBN 978-953-51-0217-5.
3. Lavergne, R. *Tisaneurs et Plantes Médicinales Indigènes à la Réunion*; Orphie: Livry Gargan, France, 2016; ISBN 979-10-298-0073-3.
4. Adersen, A.; Adersen, H. Plants from Réunion Island with alleged antihypertensive and diuretic effects—An experimental and ethnobotanical evaluation. *J. Ethnopharmacol.* **1997**, *58*, 189–206. [[CrossRef](#)]
5. Marimoutou, M.; Le Sage, F.; Smadja, J.; Lefebvre d’Hellencourt, C.; Gonthier, M.-P.; Robert-Da Silva, C. Antioxidant polyphenol-rich extracts from the medicinal plants *Antirhea borbonica*, *Doratoxylon apetalum* and *Gouania mauritiana* protect 3T3-L1 preadipocytes against H₂O₂, TNF α and LPS inflammatory mediators by regulating the expression of superoxide dismutase and NF- κ B genes. *J. Inflamm. (London)* **2015**, *12*, 10. [[CrossRef](#)]
6. Fortin, H.; Vigor, C.; Lohézic-Le Dévéhat, F.; Robin, V.; Le Bossé, B.; Boustie, J.; Amoros, M. In vitro antiviral activity of thirty-six plants from La Réunion Island. *Fitoterapia* **2002**, *73*, 346–350. [[CrossRef](#)]
7. Ledoux, A.; Cao, M.; Jansen, O.; Mamede, L.; Campos, P.-E.; Payet, B.; Clerc, P.; Grondin, I.; Girard-Valenciennes, E.; Hermann, T.; et al. Antiplasmodial, anti-chikungunya virus and antioxidant activities of 64 endemic plants from the Mascarene Islands. *Int. J. Antimicrob. Agents* **2018**, *52*, 622–628. [[CrossRef](#)]
8. Haddad, J.G.; Koishi, A.C.; Gaudry, A.; Nunes Duarte Dos Santos, C.; Viranaicken, W.; Desprès, P.; El Kalamouni, C. *Doratoxylon apetalum*, an Indigenous Medicinal Plant from Mascarene Islands, Is a Potent Inhibitor of Zika and Dengue Virus Infection in Human Cells. *Int. J. Mol. Sci.* **2019**, *20*. [[CrossRef](#)]
9. Giraud-Techer, S. Plantes médicinales de La Réunion inscrites à la Pharmacopée française. *Ethnopharmacologia* **2016**, *7*–33.
10. Poullain, C.; Girard-Valenciennes, E.; Smadja, J. Plants from reunion island: Evaluation of their free radical scavenging and antioxidant activities. *J. Ethnopharmacol.* **2004**, *95*, 19–26. [[CrossRef](#)]
11. Tailé, J.; Arcambal, A.; Clerc, P.; Gauvin-Bialecki, A.; Gonthier, M.-P. Medicinal Plant Polyphenols Attenuate Oxidative Stress and Improve Inflammatory and Vasoactive Markers in Cerebral Endothelial Cells during Hyperglycemic Condition. *Antioxidants* **2020**, *9*, 573. [[CrossRef](#)]
12. Delveaux, J.; Turpin, C.; Veeren, B.; Diotel, N.; Bravo, S.B.; Begue, F.; Álvarez, E.; Meilhac, O.; Bourdon, E.; Rondeau, P. *Antirhea borbonica* Aqueous Extract Protects Albumin and Erythrocytes from Glycoxidative Damages. *Antioxidants* **2020**, *9*, 415. [[CrossRef](#)]
13. Arcambal, A.; Tailé, J.; Couret, D.; Planesse, C.; Veeren, B.; Diotel, N.; Gauvin-Bialecki, A.; Meilhac, O.; Gonthier, M.-P. Protective Effects of Antioxidant Polyphenols against Hyperglycemia-Mediated Alterations in Cerebral Endothelial Cells and a Mouse Stroke Model. *Mol. Nutr. Food Res.* **2020**, *64*, e1900779. [[CrossRef](#)]
14. Ghaddar, B.; Veeren, B.; Rondeau, P.; Bringart, M.; Lefebvre d’Hellencourt, C.; Meilhac, O.; Bascands, J.-L.; Diotel, N. Impaired brain homeostasis and neurogenesis in diet-induced overweight zebrafish: A preventive role from *A. borbonica* extract. *Sci. Rep.* **2020**, *10*, 14496. [[CrossRef](#)]
15. Horzmann, K.A.; Freeman, J.L. Making Waves: New Developments in Toxicology with the Zebrafish. *Toxicol. Sci.* **2018**, *163*, 5–12. [[CrossRef](#)]
16. Tal, T.; Yaghoobi, B.; Lein, P.J. Translational toxicology in zebrafish. *Curr. Opin. Toxicol.* **2020**, *23–24*, 56–66. [[CrossRef](#)]
17. Clifford, M.N.; Knight, S.; Kuhnert, N. Discriminating between the Six Isomers of Dicafeoylquinic Acid by LC-MSn. *J. Agric. Food Chem* **2005**, *53*, 3821–3832. [[CrossRef](#)]
18. Clifford, M.N.; Johnston, K.L.; Knight, S.; Kuhnert, N. Hierarchical Scheme for LC-MSn Identification of Chlorogenic Acids. *J. Agric. Food Chem.* **2003**, *51*, 2900–2911. [[CrossRef](#)]
19. Fang, N.; Yu, S.; Prior, R.L. LC/MS/MS characterization of phenolic constituents in dried plums. *J. Agric. Food Chem.* **2002**, *50*, 3579–3585. [[CrossRef](#)]

20. Jaiswal, R.; Patras, M.A.; Eravuchira, P.J.; Kuhnert, N. Profile and characterization of the chlorogenic acids in green Robusta coffee beans by LC-MS(n): Identification of seven new classes of compounds. *J. Agric. Food Chem.* **2010**, *58*, 8722–8737. [[CrossRef](#)]
21. Clifford, M.N.; Marks, S.; Knight, S.; Kuhnert, N. Characterization by LC-MS(n) of four new classes of p-coumaric acid-containing diacyl chlorogenic acids in green coffee beans. *J. Agric. Food Chem.* **2006**, *54*, 4095–4101. [[CrossRef](#)]
22. Wu, S.-B.; Meyer, R.S.; Whitaker, B.D.; Litt, A.; Kennelly, E.J. A new liquid chromatography–mass spectrometry-based strategy to integrate chemistry, morphology, and evolution of eggplant (*Solanum*) species. *J. Chromatogr. A* **2013**, *1314*, 154–172. [[CrossRef](#)]
23. Clifford, M.N.; Knight, S.; Surucu, B.; Kuhnert, N. Characterization by LC-MSn of Four New Classes of Chlorogenic Acids in Green Coffee Beans: Dimethoxycinnamoylquinic Acids, Diferuloylquinic Acids, Caffeoyl-dimethoxycinnamoylquinic Acids, and Feruloyl-dimethoxycinnamoylquinic Acids. *J. Agric. Food Chem.* **2006**, *54*, 1957–1969. [[CrossRef](#)]
24. OECD. Test No. 236: Fish Embryo Acute Toxicity (FET) Test, OECD Guidelines for the Testing of Chemicals, Section 2; OECD Publishing: Paris, France, 2013.
25. Drummond, I.A.; Majumdar, A.; Hentschel, H.; Elger, M.; Solnica-Krezel, L.; Schier, A.F.; Neuhauss, S.C.; Stemple, D.L.; Zwartkruis, F.; Rangini, Z.; et al. Early development of the zebrafish pronephros and analysis of mutations affecting pronephric function. *Development* **1998**, *125*, 4655–4667. [[PubMed](#)]
26. Goldstone, J.V.; McArthur, A.G.; Kubota, A.; Zanette, J.; Parente, T.; Jönsson, M.E.; Nelson, D.R.; Stegeman, J.J. Identification and developmental expression of the full complement of Cytochrome P450 genes in Zebrafish. *BMC Genom.* **2010**, *11*, 643. [[CrossRef](#)] [[PubMed](#)]
27. Field, H.A.; Ober, E.A.; Roeser, T.; Stainier, D.Y.R. Formation of the digestive system in zebrafish. I. Liver morphogenesis. *Dev. Biol.* **2003**, *253*, 279–290. [[CrossRef](#)]
28. Flores-Pérez, A.; Marchat, L.A.; Sánchez, L.L.; Romero-Zamora, D.; Arechaga-Ocampo, E.; Ramírez-Torres, N.; Chávez, J.D.; Carlos-Reyes, Á.; Astudillo-de la Vega, H.; Ruiz-García, E.; et al. Differential proteomic analysis reveals that EGCG inhibits HDGF and activates apoptosis to increase the sensitivity of non-small cells lung cancer to chemotherapy. *Prot. Clin. Appl.* **2016**, *10*, 172–182. [[CrossRef](#)] [[PubMed](#)]
29. Zamora-Ros, R.; Touillaud, M.; Rothwell, J.A.; Romieu, I.; Scalbert, A. Measuring exposure to the polyphenol metabolome in observational epidemiologic studies: Current tools and applications and their limits. *Am. J. Clin. Nutr.* **2014**, *100*, 11–26. [[CrossRef](#)] [[PubMed](#)]
30. Khan, N.; Mukhtar, H. Modulation of signaling pathways in prostate cancer by green tea polyphenols. *Biochem. Pharm.* **2013**, *85*, 667–672. [[CrossRef](#)]
31. Afshin, A.; Micha, R.; Khatibzadeh, S.; Mozaffarian, D. Consumption of nuts and legumes and risk of incident ischemic heart disease, stroke, and diabetes: A systematic review and meta-analysis. *Am. J. Clin. Nutr.* **2014**, *100*, 278–288. [[CrossRef](#)] [[PubMed](#)]
32. Hooper, L.; Kroon, P.A.; Rimm, E.B.; Cohn, J.S.; Harvey, I.; Le Cornu, K.A.; Ryder, J.J.; Hall, W.L.; Cassidy, A. Flavonoids, flavonoid-rich foods, and cardiovascular risk: A meta-analysis of randomized controlled trials. *Am. J. Clin. Nutr.* **2008**, *88*, 38–50. [[CrossRef](#)]
33. Rasines-Perea, Z.; Teissedre, P.-L. Grape Polyphenols' Effects in Human Cardiovascular Diseases and Diabetes. *Molecules* **2017**, *22*, 68. [[CrossRef](#)]
34. Colizzi, C. The protective effects of polyphenols on Alzheimer's disease: A systematic review. *Alzheimers Dement. (New York)* **2019**, *5*, 184–196. [[CrossRef](#)]
35. Scalbert, A.; Manach, C.; Morand, C.; Rémésy, C.; Jiménez, L. Dietary polyphenols and the prevention of diseases. *Crit. Rev. Food Sci. Nutr.* **2005**, *45*, 287–306. [[CrossRef](#)] [[PubMed](#)]
36. Le Sage, F.; Meilhac, O.; Gonthier, M.-P. Anti-inflammatory and antioxidant effects of polyphenols extracted from *Antirhea borbonica* medicinal plant on adipocytes exposed to *Porphyromonas gingivalis* and *Escherichia coli* lipopolysaccharides. *Pharm. Res.* **2017**, *119*, 303–312. [[CrossRef](#)]
37. Manach, C.; Scalbert, A.; Morand, C.; Rémésy, C.; Jiménez, L. Polyphenols: Food sources and bioavailability. *Am. J. Clin. Nutr.* **2004**, *79*, 727–747. [[CrossRef](#)] [[PubMed](#)]
38. Pérez-Jiménez, J.; Neveu, V.; Vos, F.; Scalbert, A. Systematic analysis of the content of 502 polyphenols in 452 foods and beverages: An application of the phenol-explorer database. *J. Agric. Food Chem.* **2010**, *58*, 4959–4969. [[CrossRef](#)] [[PubMed](#)]

39. Santos-Buelga, C.; Williamson, G. *Methods in Polyphenol Analysis*; Royal Society of Chemistry: Cambridge, UK, 2003; ISBN 978-0-85404-580-8.
40. Stalikas, C.D. Extraction, separation, and detection methods for phenolic acids and flavonoids. *J. Sep. Sci.* **2007**, *30*, 3268–3295. [[CrossRef](#)] [[PubMed](#)]
41. Złotek, U.; Mikulska, S.; Nagajek, M.; Świeca, M. The effect of different solvents and number of extraction steps on the polyphenol content and antioxidant capacity of basil leaves (*Ocimum basilicum* L.) extracts. *Saudi J. Biol. Sci.* **2016**, *23*, 628–633. [[CrossRef](#)]
42. Liu, W.; Yin, D.; Li, N.; Hou, X.; Wang, D.; Li, D.; Liu, J. Influence of Environmental Factors on the Active Substance Production and Antioxidant Activity in *Potentilla fruticosa* L. and Its Quality Assessment. *Sci. Rep.* **2016**, *6*, 28591. [[CrossRef](#)]
43. Regos, I.; Treutter, D. Optimization of a high-performance liquid chromatography method for the analysis of complex polyphenol mixtures and application for sainfoin extracts (*Onobrychis vicifolia*). *J. Chromatogr. A* **2010**, *1217*, 6169–6177. [[CrossRef](#)]
44. Aryal, S.; Baniya, M.K.; Danekhu, K.; Kunwar, P.; Gurung, R.; Koirala, N. Total Phenolic Content, Flavonoid Content and Antioxidant Potential of Wild Vegetables from Western Nepal. *Plants* **2019**, *8*, 96. [[CrossRef](#)]
45. Dudonné, S.; Vitrac, X.; Coutière, P.; Woillez, M.; Mérillon, J.-M. Comparative study of antioxidant properties and total phenolic content of 30 plant extracts of industrial interest using DPPH, ABTS, FRAP, SOD, and ORAC assays. *J. Agric. Food Chem.* **2009**, *57*, 1768–1774. [[CrossRef](#)]
46. Balasundram, N.; Sundram, K.; Samman, S. Phenolic compounds in plants and agri-industrial by-products: Antioxidant activity, occurrence, and potential uses. *Food Chem.* **2006**, *99*, 191–203. [[CrossRef](#)]
47. Hatia, S.; Septembre-Malaterre, A.; Le Sage, F.; Badiou-Bénéteau, A.; Baret, P.; Payet, B.; Lefebvre d'hellencourt, C.; Gonthier, M.P. Evaluation of antioxidant properties of major dietary polyphenols and their protective effect on 3T3-L1 preadipocytes and red blood cells exposed to oxidative stress. *Free Radic. Res.* **2014**, *48*, 387–401. [[CrossRef](#)]
48. Sirota, R.; Gibson, D.; Kohen, R. The timing of caffeic acid treatment with cisplatin determines sensitization or resistance of ovarian carcinoma cell lines. *Redox Biol.* **2017**, *11*, 170–175. [[CrossRef](#)]
49. Mennen, L.I.; Walker, R.; Bennetau-Pelissero, C.; Scalbert, A. Risks and safety of polyphenol consumption. *Am. J. Clin. Nutr.* **2005**, *81*, 326S–329S. [[CrossRef](#)]
50. Kimmel, C.B.; Ballard, W.W.; Kimmel, S.R.; Ullmann, B.; Schilling, T.F. Stages of embryonic development of the zebrafish. *Dev. Dyn.* **1995**, *203*, 253–310. [[CrossRef](#)]
51. Cortinovis, C.; Caloni, F. Alkaloid-Containing Plants Poisonous to Cattle and Horses in Europe. *Toxins* **2015**, *7*, 5301–5307. [[CrossRef](#)]
52. Cheeke, P.R. Toxicity and metabolism of pyrrolizidine alkaloids. *J. Anim. Sci.* **1988**, *66*, 2343–2350. [[CrossRef](#)]
53. Diaz, G.J. Toxicosis by Plant Alkaloids in Humans and Animals in Colombia. *Toxins* **2015**, *7*, 5408–5416. [[CrossRef](#)]
54. Sano, K.; Inohaya, K.; Kawaguchi, M.; Yoshizaki, N.; Iuchi, I.; Yasumasu, S. Purification and characterization of zebrafish hatching enzyme—An evolutionary aspect of the mechanism of egg envelope digestion. *FEBS J.* **2008**, *275*, 5934–5946. [[CrossRef](#)]
55. Muraina, I.A.; Maret, W.; Bury, N.R.; Hogstrand, C. Hatching gland development and hatching in zebrafish embryos: A role for zinc and its transporters Zip10 and Znt1a. *Biochem. Biophys. Res. Commun.* **2020**, *528*, 698–705. [[CrossRef](#)]
56. Hill, A.J.; Teraoka, H.; Heideman, W.; Peterson, R.E. Zebrafish as a model vertebrate for investigating chemical toxicity. *Toxicol. Sci.* **2005**, *86*, 6–19. [[CrossRef](#)] [[PubMed](#)]
57. McCampbell, K.K.; Wingert, R.A. New tides: Using zebrafish to study renal regeneration. *Transl. Res.* **2014**, *163*, 109–122. [[CrossRef](#)] [[PubMed](#)]
58. Hanke, N.; Staggs, L.; Schroder, P.; Litteral, J.; Fleig, S.; Kaufeld, J.; Pauli, C.; Haller, H.; Schiffer, M. “Zebrafishing” for novel genes relevant to the glomerular filtration barrier. *BioMed Res. Int.* **2013**, *2013*, 658270. [[CrossRef](#)]
59. Morello, J.; Derks, R.J.E.; Lopes, S.S.; Steenvoorden, E.; Monteiro, E.C.; Mayboroda, O.A.; Pereira, S.A. Zebrafish Larvae Are a Suitable Model to Investigate the Metabolic Phenotype of Drug-Induced Renal Tubular Injury. *Front. Pharm.* **2018**, *9*, 1193. [[CrossRef](#)] [[PubMed](#)]
60. Van Wijk, R.C.; Krekels, E.H.J.; Hankemeier, T.; Spaink, H.P.; van der Graaf, P.H. Systems pharmacology of hepatic metabolism in zebrafish larvae. *Drug Discov. Today Dis. Models* **2016**, *22*, 27–34. [[CrossRef](#)]

61. Singleton, V.L. Colorimetry of Total Phenolics with Phosphomolybdic-Phosphotungstic Acid Reagents. *Am. J. Enol. Vitic.* **1965**, *16*, 144–158.
62. Zhishen, J.; Mengcheng, T.; Jianming, W. The determination of flavonoid contents in mulberry and their scavenging effects on superoxide radicals. *Food Chem.* **1999**, *64*, 555–559. [[CrossRef](#)]

Sample Availability: Crushed leaves of *A. borbonica* available from the authors.



© 2020 by the authors. Licensee MDPI, Basel, Switzerland. This article is an open access article distributed under the terms and conditions of the Creative Commons Attribution (CC BY) license (<http://creativecommons.org/licenses/by/4.0/>).