

ARTICLE

Received 9 Jul 2012 | Accepted 14 Dec 2012 | Published 22 Jan 2013

DOI: 10.1038/ncomms2390

OPEN

High heat flow and ocean acidification at a nascent rift in the northern Gulf of California

Rosa Ma Prol-Ledesma¹, Marco-Antonio Torres-Vera², Riccardo Rodolfo-Metalpa³, Catalina Ángeles⁴, Carlos H. Lechuga Deveze⁵, Ruth Esther Villanueva-Estrada¹, Evgeni Shumilin⁶ & Carlos Robinson⁴

The prevailing tectonic setting in the Gulf California suggests the presence of an undetermined number of short spreading centres with associated hydrothermal systems. However, to date, active seafloor spreading phenomena have been documented in only three of the eight tectonically active basins. Here we report heat flow values as high as $15,436 \text{ mW m}^{-2}$ in two of the northernmost basins of the Gulf of California, providing evidence of intense hydrothermal activity associated with the transition from continental rifting to seafloor spreading. The mean heat flow for the Wagner and Consag basins area is $1,875 \text{ mW m}^{-2}$, more than 15 times higher than the mean value for oceanic crust (105.4 mW m^{-2}). Additional evidence for vigorous hydrothermal circulation and a shallow heat source includes intense gas discharge (CO_2 and CH_4), widespread low pH (average 7.7), locally high ^{222}Rn concentrations in the bottom water and a high extent of organic matter maturation in the sediments.

¹Instituto de Geofísica, Universidad Nacional Autónoma de México, Mexico, Cd. Universitaria, Mexico D.F. 04510, Mexico. ²Asociación para Evitar la Ceguera en México, Vicente García Torres 46, San Lucas Coyoacán C.P. 04030 A.P.E.C., Mexico D.F. 04310, Mexico. ³Marine Institute, Marine Biology and Ecology Research Centre, University of Plymouth, Drake Circus, Plymouth, Devon PL4 8AA, UK. ⁴Instituto de Ciencias del Mar y Limnología, Universidad Nacional Autónoma de México, Mexico, Cd. Universitaria, Mexico D.F. 04510, Mexico. ⁵Centro de Investigaciones Biológicas del Noroeste, S.C. Mar Bermejo 195, Colonia Playa Palo de Santa Rita, 23090 La Paz, B.C.S., Mexico. ⁶Centro Interdisciplinario de Ciencias Marinas, Instituto Politécnico Nacional, Av. IPN s/n Col. Playa Palo de Santa Rita, 23090 La Paz, B.C.S., Mexico. Correspondence and requests for materials should be addressed to R.M.P.-L. (email: prol@unam.mx).

The Gulf of California (GC) formed as a result of oblique rifts linked by long transform faults and short spreading centres at ~ 6 Ma ago¹. Active seafloor spreading phenomena have been documented in only three of the eight tectonically active basins located in the GC². However, the prevailing tectonic setting in the region indicates that the Gulf likely includes an undetermined number of short spreading centres³ with hydrothermal systems in different stages of development. The majority of data on active seafloor spreading in the GC corresponds to the Guaymas and the Alarcón basins^{4,5}. A crustal thickness of ~ 15 km has been calculated for the northern Gulf⁶, and this area is suited to study the transition from continental to oceanic rifting.

The Wagner and Consag basins are located towards the northernmost extent of the GC (Fig. 1) between the Upper Gulf to the north and the Upper and Lower Delfín basins to the south. The two basins are semi-graben structures that link the Upper Delfín basin to the south and the subaerial Cerro Prieto basin to the north in the Mexicali-Imperial Valley along the Pacific-North America plate boundary in the northern GC. These basins are the shallowest basins in the GC, with depths of less than ~ 225 m, and are tectonically active with a relatively high number of faults⁷.

Geophysical or geochemical evidence of active seafloor spreading in the northern GC has not been previously reported. Moreover, the Wagner and Consag basins have been considered as unlikely to contain active seafloor spreading processes, despite having the highest density of faults⁷ in the northern Gulf as well as possible mantle upwelling under the Wagner basin indicated by seismic modelling⁸.

In the Wagner basin, the sediment thickness is greater than 7 km, which impedes the rise of magma generated by seafloor spreading; this hindrance, in turn, masks any visible evidence of rifting⁹. Consequently, heat flow anomalies are the only indication of nascent spreading centres in the sediment-covered basins¹⁰. The connexion of the two basins to the active spreading centres at Delfín basin and Cerro Prieto has long been hypothesized but not demonstrated^{11,12} because the thick sediment cover eliminates the possibility of identification of magnetic banding or gravity anomalies related to active ocean spreading. Recently, the occurrence of gas venting has been reported¹³ in both of the basins. Beneath the plumes, acoustic blanking is widely observed, indicating subsurface gas accumulation (Fig. 2a). Although there are areas on the western side of the basins where surface gas flares are not detected,

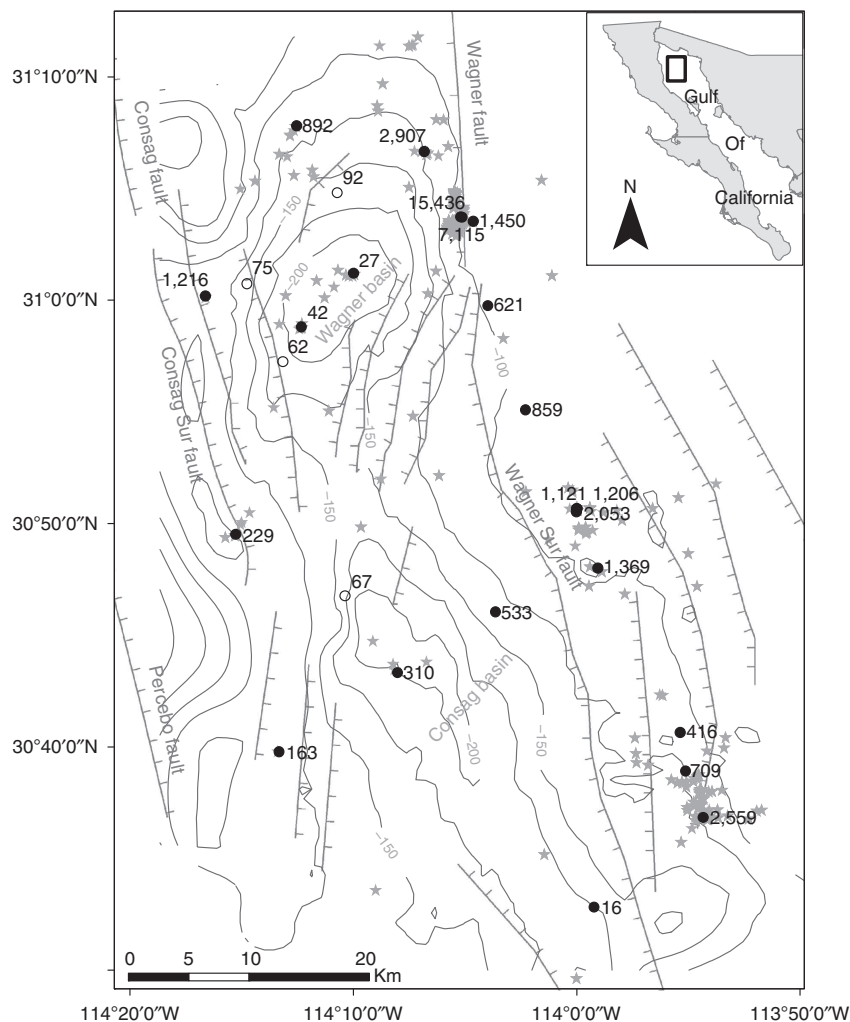


Figure 1 | Locations of the Wagner and Consag basins and the heat flow stations. Detailed bathymetric map of the Wagner and Consag basins; stars indicate the flare locations. Thick lines denote the main and secondary faults identified by the seismic reflection (Wagner basin faults²⁰; Consag basin faults⁹). Numbers indicate the heat flow data (values in mW m^{-2}) from this study (filled circles) and previously published results (open circles)³. A majority of values are greater than the mean ocean heat flow¹⁸ (105.4 mW m^{-2}).

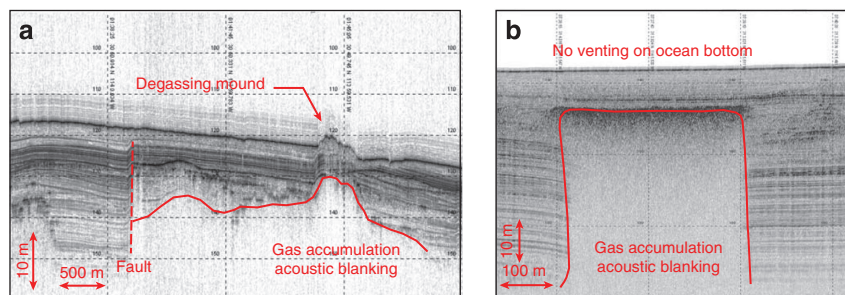


Figure 2 | Sub-bottom profiles. Sub-bottom profiles showing the blanking effects of gas saturation: (a) zones with active venting in the northeastern region of the study area; (b) new areas of gas upwelling without sea bottom disruption in the western portion of the study area, where a large ^{222}Rn anomaly indicates the upflow location (W – 27 in Supplementary Fig. S1).

sub-bottom profiles indicate the disruption of the sedimentary structure by newly ascending gas plumes (Fig. 2b), indicating that the activity is increasing.

Detailed bathymetric mapping of the Wagner and Consag basins (Fig. 1) indicates the eastern edge of the basins bordered by the Wagner Fault. The bathymetry and acoustic sub-bottom profiler data reveal large vertical displacements due to the recent faulting that disrupts the sedimentary column. During two oceanographic cruises, more than 300 flares were mapped on the echo-sounder profiles (Fig. 1) at depths from 65 to 150 m, covering an area of 2,240 km². The gas plumes originate from sites of large disruptions of the upper sediment structure (for example, synsedimentary faults, pockmarks, mud domes and diapirs, as well as raised irregular hard reflectors; Fig. 2a). The plumes had mainly diffuse and intermittent gas flows in extensive areas of the basins, as observed using a remotely operated vehicle (ROV) camera.

The extensive tidal and convective mixing, as well as the strong currents in the Gulf, combine the different water masses, thus maintaining a nearly constant temperature in the bottom of the Wagner and Consag basins^{14,15}. This effect allows the measurement of the temperature gradient minimizing seasonal variations in the temperature. In contrast, the strong vertical mixing in the water column produces less pronounced physico-chemical profiles related with ocean bottom discharge features¹⁶.

Historical heat flow studies were concentrated in the central and southern part of the GC, and only four heat flow measurements³ have been performed in the Wagner and Consag basins, producing values in the range from 63 to 92 mW m⁻². Additionally, heat flow values of 108 and 126 mW m⁻² near the Wagner and Consag basins were calculated using the Curie point isotherm depths¹⁷. Previous data did not indicate the presence of a major heat flow anomaly in the northern GC, as the mean heat flow for the oceanic crust¹⁸ is 105.4 mW m⁻².

Seismicity is high in this region^{9,19}, and focal mechanisms are mainly strike-slip and dip-slip, which are consistent with the extension character of the basins and the transform faults of the Cerro Prieto system. The earthquakes recorded between 1973 and 2009 show that significant seismic activity occurs along the main faults on the borders of the basins⁹.

The deep structure of the Wagner basin was described based on seismic images that present poor resolution at depth in the Wagner and Consag basins area; however, these data allow for the inference of the basement depth below the 7-km-thick sediment cover²⁰. The observed gas accumulation may explain the low quality of the images obtained in the seismic studies. The mapped structures in the upper 4–5 km reveal the presence of abundant faults within both of the basins (1 fault km⁻¹ in Wagner basin and 1.3 faults km⁻¹ in Consag basin²⁰). These faults do not reach

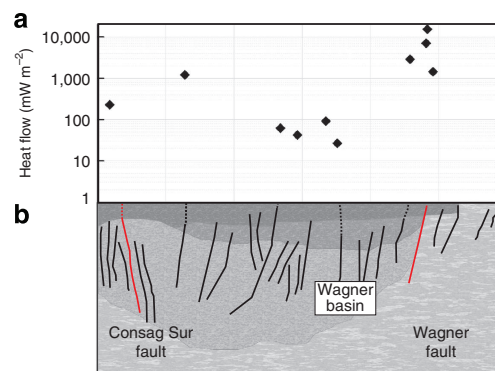


Figure 3 | Heat flow pattern and faults throughout the Wagner basin.

The scheme shows (a) the heat flow variation across the Wagner basin on a SW-NE profile and (b) the main fault location as identified by the seismic reflection data^{9,20}. High values correlate with the presence of the Wagner and Consag Sur faults.

the sea bottom (Fig. 3b), but they do increase the permeability at depth within the thick sediment pack and allow for convective heat transfer in the deep sedimentary layers.

The magnetic and gravity anomalies coincide with the centre of the Wagner basin, and their low amplitude is related to the thick sediment cover¹⁷. A thick sediment cover usually masks lineated anomalies produced by seafloor spreading. Additionally, it has been suggested that the low permeability of the sediments will favour a more intense alteration of any layered intrusions at depth, thereby suppressing the magnetic anomalies²¹. Magnetic surveys indicate that the upper basement in this area likely contains basalt layers interbedded with sediments^{17,22}.

Here, we present new heat flow data and pH measurements, detailed bathymetric observations, gas compositions, profiler sections and organic matter maturation data; this information provides the supporting evidence required to infer the occurrence of active seafloor spreading at the Wagner and Consag basins. The average thermal gradient of $\sim 1\text{ }^{\circ}\text{C m}^{-1}$ (greater than 30 times the average gradient on Earth) and the occurrence of ^{222}Rn -positive anomalies in the bottom water samples reveal the occurrence of high heat flow-driven convection through the thick sediment cover, which generates diffuse gas discharge (mainly CO₂ with minor CH₄). CO₂ is a common gas discharging from hydrothermal vents, and as CO₂ dissolves in sea water, the pH decreases, thereby generating acidification over an extensive area. The identification of CO₂ as the most abundant gas in the discharged fluids explains the low pH measured in the area and identifies this zone as a natural laboratory to explore the evolution of ecosystems under long-term exposure to low pH conditions.

Results

Heat flow measurements. In contrast to spreading centres that do not have a sediment cover, the thick sediment layer in the Wagner and Consag basins made it possible to conduct coring and heat flow surveys in the study area, especially over the active hydrothermal manifestations. As this is the first detailed heat flow mapping of the basins, we located the heat flow stations in profiles that crossed the basins to identify heat transport anomalies. We focused the heat flow and coring studies on the trace of the Wagner and Wagner Sur faults, where the majority of the hydrothermal features occur, as this structure likely dominates the deep fluid circulation.

The measured thermal gradients varied from 0.01 to greater than $12\text{ }^{\circ}\text{C m}^{-1}$ (see sample plots in Supplementary Fig. S1), and thermal conductivity values were relatively homogeneous with an average of $1.2\text{ W m}^{-1}\text{ }^{\circ}\text{C}^{-1}$. The calculated heat flow ranged from 16 to $15,436\text{ mW m}^{-2}$ (Table 1, Fig. 1). At station 14, the temperatures below 3 m exceed the maximum range of the thermistors ($60\text{ }^{\circ}\text{C}$), and the gradient ($>10\text{ }^{\circ}\text{C m}^{-1}$) was calculated using data from only five thermistors, which nevertheless, yielded a good linear correlation (Supplementary Fig. S1). Only three stations presented heat flow values below the mean value for the oceans (105.4 mW m^{-2}), and the remaining measurements were well above this value. The calculated error in the heat flow measurements was $<10\%$ for all the stations (Table 1) except for station 1 (22.84%), where the lowest heat flow value was obtained.

pH and gas chemistry. The bottom water samples were collected to determine the pH, dissolved gas concentrations and ^{222}Rn concentrations. Only CO_2 and CH_4 were detected in the gas sample ($[\text{CO}_2] = 78\%$ and $[\text{CH}_4] = 22\%$); in addition, CO_2 was the predominant component of the dissolved gases in bottom water samples collected near flares. The concentration of ^{222}Rn in the bottom water samples varied within the interval from 0 to $2,430\text{ d.p.m./100 l}$ (Supplementary Fig. S2, Supplementary Table S1).

The data presented here represent the first detailed survey of the seafloor pH in the northern Gulf (Fig. 4, Supplementary Table S2); previous reports included only one station used to define the pH in the water column in the southern Consag basin²³. Regional studies that reported pH values at the surface and in the water column along a NW-SE profile of the GC^{23,24} showed that, in the northern Gulf, the lowest pH value at the surface was 8.29. However, at 200 m depth, all recorded pH values were greater than 7.85 throughout the entire GC. Consequently, the obtained pH values of 7.55–7.85 can be considered as anomalously low and linked to the diffuse flares emitting CO_2 that were found during this study.

Sedimentary organic matter maturation. The thick sediment layer present in the Wagner and Consag basins contains abundant organic matter that is altered by the circulating hydrothermal fluids. The ratios between the aliphatic alkanes allowed for the calculation of the proportion of short- to long-chain alkanes (SRL) and the carbon preference index that were used to establish the origin, distribution and maturity level of the sedimentary organic matter (SOM). The carbon preference index values suggest that the high variability in the SOM maturity, which displayed a patchy pattern, was related to the flare occurrence. A similar variability is also observed in the Pr/Ph ratio (pristane/phytane), the presence of polycyclic aromatic hydrocarbons, the pentamethylcosane isoprenoid levels and the elemental ratio between the carbon and hydrogen (C/H) from bitumen.

Discussion

The GC has been experiencing a transition from continental rifting to seafloor spreading since 6 Ma ago¹. The variations in the rifting style along the Gulf grade from typical seafloor spreading in the southern troughs² to continental rifting in the northern end^{11,12} (Salton Sea, Browley and Cerro Prieto). The northern GC is a typical example of the early stages of this transition.

Table 1 | Heat flow measurements using the FIELAX probe (11 thermistors*) in the Wagner and Consag basins.

Station	Latitude		Longitude		Depth (m)	Sea bottom temperature ($^{\circ}\text{C}$)	Heat flow (mW m^{-2})	Error (%)
	($^{\circ}\text{N}$)	(min N)	($^{\circ}\text{W}$)	(min W)				
1	30	32.807	113	59.204	178	15	16	22.84
2	31	6.653	114	6.822	123	18	2,907	0.01
3	31	3.716	114	5.183	98	20	7,115	0.01
4	31	7.800	114	12.533	116	17	892	0.22
5	31	0.183	114	16.616	97	18	1,216	2.13
6	30	58.800	114	12.317	214	15	42	3.89
7	31	1.200	114	9.983	213	15	27	2.24
8	30	49.500	114	15.267	98	19	229	2.46
9	30	39.768	114	13.319	102	18	163	0.23
10	30	43.310	114	8.015	193	14	310	0.71
11	30	46.034	114	3.629	129	16	533	3.85
12	30	47.993	113	59.043	95	28	1,369	6.97
13	30	50.651	113	59.988	84	20	1,206	0.24
13A	30	50.649	113	59.982	83	20	1,121	4.88
14 [†]	31	3.701	114	5.119	91	27	15,436	0.84
15	31	3.535	114	4.628	82	20	1,450	2.49
16	30	59.752	114	3.959	95	18	621	0.63
17	30	55.080	114	2.284	91	19	859	0.42
18	30	50.519	114	0.005	88	20	2,053	0.44
19	30	40.634	113	55.364	116	17	416	1.45
20	30	38.904	113	55.104	123	16	709	5.48
21	30	36.824	113	54.323	115	17	2,559	2.24

*In all measurements there was full penetration of the probe, which allowed measuring sea bottom temperature. [†]In station 14 the six thermistors below 3 m went off scale because the temperature was above their maximum temperature range ($60\text{ }^{\circ}\text{C}$). See Supplementary Fig. S1.

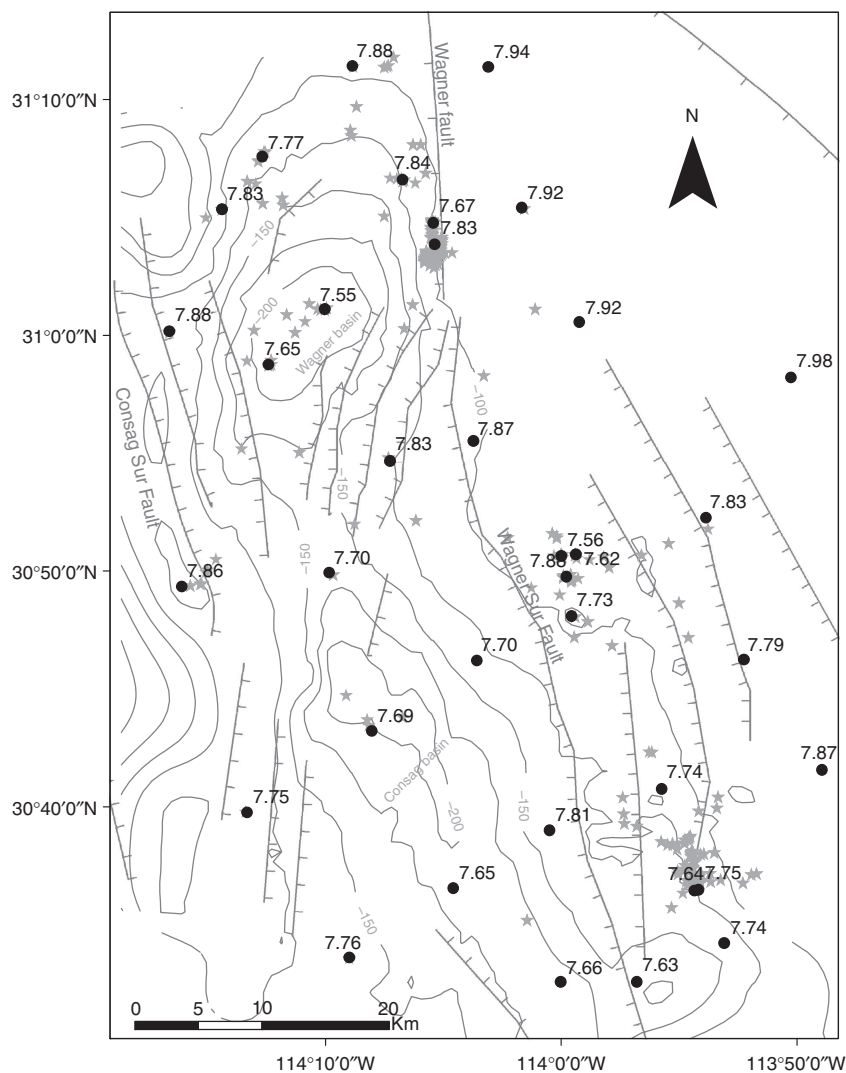


Figure 4 | pH data of the Wagner and Consag basins. pH values measured in the bottom water samples. A majority of measured values are less than the reported pH for the northern Gulf of California at 200 m depth (7.85)²³. Stars indicate the flare locations.

The heat flow in the ocean floor is a key observation for describing seafloor spreading and estimating the energy output related to the associated hydrothermal systems. However, the measured conductive flow is usually lower than that predicted by lithosphere cooling models and is considered unreliable for the estimation of heat flux because in sediment deprived rifts, convective flow dominates heat transfer. However, in sedimented rifts, the low permeability of the sediment layers allows for a dominance of the conductive processes, and heat flow measurements are a good indication of the energy output of the system²⁵. In the case of the Wagner and Consag basins, the sediment thickness is 7 km, and the heat discharge estimation can be considered as reliable.

Previous heat flow measurements³ (average 74 mW m^{-2}) in the Wagner and Consag basins were located in the deepest areas of the basins, coinciding with the lowest heat flow values that were recorded in this survey (Fig. 1). In contrast, high heat flow is predominant at the basin borders, particularly in the eastern part of the study area at the borders of the Wagner and Wagner Sur faults (Fig. 3a), and the highest value was recorded on the northeastern section that was associated with the largest observed flares.

The abundance of faults in the Wagner and Consag basins favours convective heat transfer by locally enhancing the

sediment permeability. The seismic profiles indicate that most faults extend up to a depth of $< 500 \text{ m}$ and do not reach the sea bottom (Fig. 3b). Therefore, shallow sediment layers act as a seal cap, which prevents convective fluid discharge at the sea bottom except for those areas where the major faults intersect the bottom, generate permeable zones in the otherwise impermeable sediments and allow flares to occur.

The heat flow pattern throughout the Wagner basin (Fig. 3a) differs from the typically observed maximum in the axial depression of the mature seafloor spreading centres²⁵. The heat flow value distribution recorded at the Wagner and Consag basins indicates that in their early stages of development, the spreading centres with thick sediment cover present hydrothermal convection that is restricted to the permeable zones defined by active faults; in the shallow sediment layers, heat transport is dominated by conduction.

The mean heat flow value of $1,875 \text{ mW m}^{-2}$ corresponds to a calculated thermal output of $> 4,000 \text{ MW}_{\text{th}}$, including only those areas where hydrothermal manifestations have been observed ($2,240 \text{ km}^2$). This heat output is more than four times the total 'steady' hydrothermal heat discharge ($\sim 1,050 \text{ MW}_{\text{th}}$) identified in the US part of the Cascade Range²⁶. Marine heat flow values of the order of $1,000 \text{ mW m}^{-2}$ have been observed only in areas

where active seafloor spreading occurs, such as the Guaymas basin²⁷, and values as high as 490,000 mW m⁻² have been reported for a sedimented flank at the Juan de Fuca Ridge²⁸.

High heat flow values and intense seismicity in the Wagner and Consag basins imply the presence of a vigorous hydrothermal system in these basins. The low permeability of the sediment cover, especially in the upper layers, as shown by the sub-bottom profiler images (Fig. 2a,b), produces high conductive heat flow values measured in the ocean bottom as a result of convection in the deeper layers.

The measured CO₂/CH₄ gas ratio of ~4 is consistent with an equilibrium temperature in the order of 200 °C and is typical of sedimentary basins with active hydrothermal systems²⁹. High-temperature areas in the Guaymas basin³⁰, where thermal stress is evident in the extent of organic matter maturation, are characterized by large amounts of CO₂ and a limited range of hydrocarbons (i.e., predominantly CH₄). Therefore, it is likely that the high temperature and thick sediment cover in the Wagner and Consag basins result in the simple composition of the discharged gas (CO₂ and CH₄).

The predominance of CO₂ in the discharged gas and the extensive occurrence of flares in both of the basins has acidified 20–50 m of sea water near the bottom of the entire area (>2,000 km²) to values within 7.55–7.98 pH_T units (Fig. 4; Supplementary Table S2). Similar phenomena of extensive sea water acidification generated by CO₂ discharged by hydrothermal venting have not been reported. However, local acidification was observed in three sites^{31–33}, namely, the Okinawa Trough, Japan (lowest pH = 6.97 at 1,428 m depth), in Ischia, Italy (lowest pH = 6.40 at 3 m depth), and in Papua New Guinea (lowest pH = 7.21 at 3 m depth). CO₂ venting in those areas is related to the presence of marine deep- and shallow-water hydrothermal systems. The average value of 7.77 units, as found in the present study, is similar to the extrapolated pH level of the shallow ocean water at the end of this century due to the increase in atmospheric CO₂ concentrations³⁴. The extensive acidification of the bottom water predominates over the mixing effect of strong currents and makes this area a natural laboratory for the study of the effects of long-term acidification on deep-water ecosystems.

The water column radon anomalies in the basins indicate the input of excess radon due to injection from a ²²²Rn-rich fluid. The maximum observed ²²²Rn value of 2,430 d.p.m./100 l is well above the 60 d.p.m./100 l level that was measured in bottom water samples from the Juan de Fuca ridge flank²⁸, which is an area with intense hydrothermal circulation and a thermal output of 1.5 MW. The positive anomalies of ²²²Rn along the Wagner Fault coincide with the presence of the strongest flares, suggesting hydrothermal circulation in the thick sediment cover and revealing the location of upflow areas. High values were also observed in the areas with incipient upflow, as shown in Fig. 2b and Supplementary Fig. S1.

Further evidence of the presence of hydrothermal activity in the Wagner and Consag basins is provided by the SOM alteration. Maturation of SOM due to intense hydrothermal activity in heavily sedimented rifts generates plumes of low molecular weight hydrocarbons³⁵. The highest maturity values correlate well with the observed presence of the flares. Furthermore, the identification of the pentamethylcosane isoprenoid, related to Crenarchaeota³⁶ that live at temperatures between 75 and 105 °C, is important evidence of the occurrence of hydrothermal activity; this compound has been associated with methanogenic bacteria³⁷, and its presence coincides with the location of the largest flares in the northeastern Wagner basin.

The data reveal that hydrothermal circulation occurs along the main structures, especially the Wagner and Wagner Sur faults, and that the anomalously high heat flow values support the

association with active seafloor spreading and mantle upwelling in the Wagner and Consag basins. Both basins display all of the typical characteristics of sediment-covered active oceanic ridges with a large heat flux. However, in this case, the large heat flow values are restricted to the higher-permeability areas related to the trace of the largest faults, indicating that the transition from 'continental rift to seafloor spreading' remains in the early stages with the presence of asymmetrical semi-grabens and no geophysical evidence of oceanic lithosphere formation. However, the average heat flow agrees well with the calculated values for the conductive cooling of very young lithosphere. This characterization demonstrates that the continental rifting to the seafloor spreading transition is highly advanced in the GC and extends to the northernmost area.

Methods

Bathymetry and acoustic sediment profiler. The data presented here were collected during two oceanographic cruises, WAG-01 (2007) and WAG-02 (2010), aboard the R/V El Puma. The survey tracks were ~4,500 km in length and covered an area of ~3,500 km² (~90 km × 40 km), which included the Wagner and Consag basins. The survey paths for the second cruise were planned based on the location of the active flares to cover those areas with additional detailed bathymetry and sampling stations. Three types of Kongsberg echosounders were used: an 18 kHz Simrad ES-60 and a 120 kHz Simrad EY-60 and Multi Beam EM300. The bathymetry data were processed using the Fledermouse software. A Kongsberg TOPAS parametric acoustic sub-bottom profiler (used in Chirp mode from 1 to 6 kHz) with a sub-seafloor penetration of several tens of metres was used to study sediment features and structures, including blanking due to gas saturation. The data were displayed using the Kongsberg TOPAS software.

Autonomous underwater vehicle missions. In four sites, we used the ROV SeaEye LINX to observe the gas vents and take bottom water samples.

Water and gas chemistry. The bottom water samples were collected using standard Niskin bottles attached to the ROV. Samples from ~10 m from the ocean bottom were collected using a Rosette Water Sampling System, and samples from ~1 m above the seafloor were obtained using hydrocasts. The gas analyses were performed on board the ship using two packed-column gas chromatography (GC) systems with thermal conductivity and flame ionization detection. The interstitial gas in vials was analysed in the laboratory using gas chromatography mass spectrometry (GC-MS; Polaris Q).

The sea water samples for ²²²Rn measurements were collected near the seafloor and taken directly from the Niskin bottles while avoiding contact with air using special glass containers of 250 ml. The containers were connected to an Electronic Radon Detector 'RAD 7' coupled with an additional 'RAD-H₂O' radon-in-water accessory (DurrIDGE Co.) to measure the ²²²Rn concentrations in the sea water samples.

On board the ship, the water subsamples were collected in glass bottles, and the pH_T (in total scale) was immediately measured using a pH meter with an accuracy of 0.01 pH units. The total alkalinity (A_T) was measured by Gran titration. The parameters of the carbonate system (pCO₂, CO₃²⁻, HCO₃⁻, C_T and saturation state of calcite (Ω_c) and aragonite (Ω_a)) were calculated based on the pH_T, mean A_T, temperature and salinity at the sampling depth pressure using the free-access CO₂SYS package³⁸. A_T was nearly constant at all sites; therefore, its mean was used to calculate the carbonate chemistry parameters (A_T = 2,359.01 μmol kg⁻¹). The mean values of pH_T were calculated from hydrogen ion concentrations and then converted back to pH values³⁹ (available at <http://cdiac.ornl.gov/oceans/co2rprt.html>).

Organic matter maturation in sediments. The sediment sampling was performed using a Smith–McIntyre grab sampler, a USNEL box corer and a gravity corer. The sediment samples used in the organic matter analysis were maintained frozen until they were brought to the laboratory. Subsequently, the soluble organic matter was extracted and analysed by gas chromatography (Gas Chromatograph 5973 Network, injector 7683 B, coupled to MS Hewlett-Packard Agilent 6890N).

Heat flow measurements. Heat flow measurements were performed using a 6-m-long FIELAX probe with 11 thermistors. The full length of the probe penetrated the sediment during all of the measurements, and the ocean bottom temperature was recorded. The data were processed using custom software based on the codes published by Villinger and Davis⁴⁰. The high sedimentation rate (3.77 cm year⁻¹)⁴¹ decreases the measured heat flow values. The data were not corrected for sedimentation, and thus, the presented heat flow data should be taken as the minimum possible values because the actual values would be much higher.

Seasonal changes in the bottom temperature were not significant due to strong mixing phenomena¹⁴.

References

- Oskin, M., Stock, J. M. & Martín-Barajas, A. Rapid localization of Pacific-North America plate motion in the Gulf of California. *Geology* **29**, 459–462 (2001).
- Lizarralde, D. *et al.* Variation in styles of rifting in the Gulf of California. *Nature* **448**, 466–469 (2007).
- Heney, T. L. & Bischoff, J. L. Tectonic elements in the northern part of the Gulf of California. *Geol. Soc. Am. Bull.* **84**, 315–330 (1973).
- Gieskes, J. M. *et al.* Hydrothermal activity in the Guaymas basin, Gulf of California: a synthesis. in *Initial Reports of the Deep Sea Drilling Project* (eds Curry, J. R. *et al.*) (US Government Printing Office, 1982).
- Fisher, A. T. *et al.* Heat flow, sediment and pore fluid chemistry, and hydrothermal circulation on the east flank of Alarcon Ridge, Gulf of California. *Earth Planet. Sci. Lett.* **188**, 521–534 (2001).
- Lewis, J. L. *et al.* Crustal thickness of the peninsular ranges and gulf extensional province in the Californias. *J. Geophys. Res.* **106**, 13599–13611 (2001).
- Persaud, P. *et al.* Active deformation and shallow structure of the Wagner, Consag, and Delfin basins, northern Gulf of California, Mexico. *J. Geophys. Res.* **105**, 2355 (2003).
- Wang, Y., Forsyth, D. W. & Savage, B. Convective upwelling in the mantle beneath the Gulf of California. *Nature* **462**, 499–501 (2009).
- González-Escobar, M., Suárez-Vidal, F., Hernández-Pérez, J. A. & Martín-Barajas, A. Seismic reflection-based evidence of a transfer zone between the Wagner and Consag basins: implications for defining the structural geometry of the northern Gulf of California. *Geo. Mar. Lett.* **30**, 575–584 (2010).
- Einsle, G. Basaltic sill-sediment complexes in young spreading centers: genesis and significance. *Geology* **13**, 249–252 (1985).
- Elders, W. A. *et al.* Crustal spreading in Southern California. *Science* **178**, 15–24 (1972).
- Dorsey, R. Sedimentation and crustal recycling along an active oblique-rift margin: Salton Trough and northern Gulf of California. *Geology* **38**, 443–446 (2010).
- Canet, C. *et al.* Discovery of massive seafloor gas seepage along the Wagner fault, Northern Gulf of California. *Sed. Geol.* **228**, 292–303 (2010).
- Lavín, M. F., Gaxiola-Castro, G., Robles, J. M. & Richter, K. Winter water masses and nutrients in the northern Gulf of California. *J. Geophys. Res.* **100**, 8587–8605 (1995).
- Vázquez-Figueroa, V. *et al.* Batimetría y características hidrográficas (Mayo, 2007) en las Cuencas de Consag y Wagner, Norte del Golfo de California, México. *Bol. Soc. Geol. Mex.* **61**, 119–127 (2009).
- Delgadillo-Hinojosa, F., Macías-Zamora, J. V., Segovia-Zavala, J. A. & Torres-Valdés, S. Cadmium enrichment in the Gulf of California. *Mar. Chem.* **75**, 109–122 (2001).
- Sanchez-Zamora, O., Doguin, P., Couch, R. W. & Ness, G. E. Magnetic anomalies of the Northern Gulf of California: structural and thermal interpretations. in *The Gulf and Peninsular Provinces of the Californias* (eds Dauphin, J. P. & Simoneit, B. R.) 47, 377–401 (AAPG Mem, 1991).
- Davies, J. H. & Davies, D. R. Earth's surface heat flux. *Solid Earth* **1**, 5–24 (2010).
- Frez, J. & González, J. J. Crustal structure and seismotectonics of Northern Baja California. In *The Gulf and Peninsular Provinces of the Californias* (eds Dauphin, J. P. & Simoneit, B. R.) 47, 261–283 (AAPG Mem, 1991).
- González-Escobar, M., Aguilar-Campos, C., Suarez-Vidal, F. & Martín-Barajas, A. Geometry of the Wagner basin, upper Gulf of California based on seismic reflections. *Int. Geol. Rev.* **51**, 133–144 (2009).
- Levi, S. & Riddihough, R. Why are marine magnetic anomalies suppressed over sedimented spreading centers? *Geology* **14**, 651–654 (1986).
- Klitgord, K. D., Mudie, J. D., Bischoff, J. L. & Heney, T. L. Magnetic anomalies in the Northern and Central Gulf of California. *Geol. Soc. Am. Bull.* **85**, 815–820 (1974).
- Alvarez-Borrego, S. & Lara-Lara, J. R. The physical environment and primary productivity of the Gulf of California. in *The Gulf and Peninsular Provinces of the Californias* (eds Dauphin, J. P. & Simoneit, B. R.) 47, 555–567 (AAPG Mem, 1991).
- Zirino, A. & Lieberman, S. H. pH-temperature relationship in the Gulf of California. in *Mapping strategies in chemical oceanography: American Chem. Soc. Adv. Chem. Ser.* (ed. Zirino, A.) 209, 393–408 (American Chemical Society, Washington, DC, 1985).
- Slater, J. G. Variability of heat flux through the seafloor: discovery of hydrothermal circulation in the ocean crust. In *Hydrogeology of the Oceanic Lithosphere* (eds Davis, E. E. & Elderfield, H.) 3–27 (Cambridge University Press, 2004).
- Ingebritsen, S. E. & Mariner, R. H. Hydrothermal heat discharge in the Cascade Range, northwestern United States. *J. Volc. Geoth. Res.* **196**, 208–218 (2010).
- Fisher, A. T. & Becker, K. Heat flow, hydrothermal circulation and basalt intrusions in the Guaymas basin, Gulf of California. *Earth Planet. Sci. Lett.* **103**, 84–99 (1991).
- Wheat, C. G. *et al.* Heat flow through a basaltic outcrop on a sedimented young ridge flank. *Geochem. Geophys. Geosyst.* **5**, Q12006 (2004).
- Giggenbach, W. Relative importance of thermodynamic and kinetic processes in governing the chemical and isotopic composition of carbon gases in high-heat flow sedimentary basins. *Geochim. Cosmochim. Acta* **61**, 3763–3785 (1997).
- Simoneit, B. R. T., Kawka, O. T. & Brault, M. Origin of gases and condensates in the Guaymas basin hydrothermal system (Gulf of California). *Chem. Geol.* **71**, 169–182 (1988).
- Shitashima, K., Maeda, Y., Koike, Y. & Ohsumi, T. Natural analogue of the rise and dissolution of liquid CO₂ in the ocean. *Int. J. Greenhouse Gas Control* **2**, 95–104 (2008).
- Hall-Spencer, J. M. *et al.* Volcanic carbon dioxide vents show ecosystem effects of ocean acidification. *Nature* **454**, 96–99 (2008).
- Fabricius, K. E. *et al.* Losers and winners in coral reefs acclimatized to elevated carbon dioxide concentrations. *Nat. Clim. Change* **1**, 165–169 (2011).
- Intergovernmental Panel on Climate Change. Summary for policymakers. in *Climate Change 2007: the Physical Sciences Basis. Working Group I Contribution to the Fourth Assessment Report of the IPCC* (eds Solomon, S. *et al.*) (Cambridge Univ. Press, 2007).
- Merewether, R. M., Olson, M. S. & Lonsdale, P. Acoustically detected hydrocarbon plumes rising from 2 Km depths in Guaymas basin, Gulf of California. *J. Geophys. Res.* **90**, 3075–3085 (1985).
- Madigan, M. T., Martinko, J. M. & Parker, J. *Brock Biology of Microorganisms* 10th edn. pp. 1012 (Prentice Hall-Pearson Education Inc., 2003).
- Thiel, V. *et al.* Highly isotopically depleted isoprenoids: molecular markers for ancient methane venting. *Geochim. Cosmochim. Acta* **63**, 3959–3966 (1999).
- Pierrot, D. E. & Wallace, D. W. MS Excel program developed for CO₂ system calculation. ORNL/CDIAC-105a Carbon Dioxide Information Analysis Center (2006).
- Dickson, A. G., Sabine, C. L. & Christian, J. R. (eds) *Guide to Best Practices for Ocean CO₂ Measurements* (PICES Special Publication 3, 2007).
- Villinger, H. & Davis, E. E. HFRED: a program for the reduction of marine heat-flow data on a microcomputer. *Geol. Sur. Can Open File Rep.* **1627**, 90 (1987).
- Baba, J., Peterson, C. D. & Schrader, H. J. Fine-grained terrigenous sediment supply and dispersal in the Gulf of California during the last century. in *The Gulf and Peninsular Provinces of the Californias* (eds Dauphin, J. P. & Simoneit, B. R.) 47, 589–602 (AAPG Mem, 1991).

Acknowledgements

This work was funded by the FONCICYT 94482 project 'Recursos geotérmicos submarinos del Norte del Golfo de California', which was jointly supported by Mexico and the European Union. This study was also partially funded by the IMPULSA IV UNAM project. We are very grateful to the crew of the R/V El Puma. The Comisión Académica de Buques Oceanográficos (CABO, UNAM) is thanked for partially supporting the research. We thank A. Estradas, D. Rodríguez, K. Choumiline, M.A. Aguilar-Juárez, J. Rentería, J.G. Gómez, F. Sandoval, M. López, J. Hall-Spencer, S.I. Ramírez-Jiménez and E. Tobon for their help during the cruise, data processing and laboratory analyses. The figures were prepared by A. Membrillo.

Author contributions

All authors were involved in the oceanographic cruise preparation and data processing. R.M.P.L. designed the project and wrote the paper. R.M.P.L. and M.A.T.V. worked on the heat flow data; R.R.M. was in charge of the water sampling, analyses and calculations for the pH data; C.A. performed all of the S.O.M. analyses and data processing; C.H.L.D. and E.S. produced the Rn data; R.E.V.E. supervised the chemical analyses and processed the data; E.S. analysed the sediment chemistry; and C.R. produced the bathymetry and profiler maps. The manuscript was reviewed and discussed by all of the authors.

Additional information

Supplementary Information accompanies this paper at <http://www.nature.com/naturecommunications>

Competing financial interests: The authors declare no competing financial interests.

Reprints and permission information is available online at <http://npg.nature.com/reprintsandpermissions/>

How to cite this article: Prol-Ledesma, R.M. *et al.* High heat flow and ocean acidification at a nascent rift in the northern Gulf of California. *Nat. Commun.* 4:1388 doi: 10.1038/ncomms2390 (2012).



This work is licensed under a Creative Commons Attribution-NonCommercial-ShareAlike 3.0 Unported License. To view a copy of this license, visit <http://creativecommons.org/licenses/by-nc-sa/3.0/>