



ORIGINAL ARTICLE

The effect of an educational intervention to improve patient antibiotic adherence during dispensing in a community pharmacy



Elena Bernabé Muñoz^a, Macarena Flores Dorado^{b,*}, José Espejo Guerrero^c,
Fernando Martínez Martínez^d

^a Profesora, Instituto de Enseñanza Secundaria Ingeniero de la Cierva, Murcia, Spain

^b Doctora en Farmacia, Técnico de Investigación, Fundación Pública Andaluza para la Gestión de Investigación en Salud de Sevilla, Miembro del Grupo de Investigación en Atención Farmacéutica (CTS-131), Sevilla, Spain

^c Doctor en Farmacia, Farmacéutico comunitario en Adra, Miembro del Grupo de Investigación en Atención Farmacéutica (CTS-131), Adra, Almería, Spain

^d Doctor en Farmacia, Profesor Titular de Química Física, Responsable del Grupo de Investigación en Atención Farmacéutica (CTS-131), Universidad de Granada, Granada, Spain

Received 13 August 2013; accepted 11 December 2013

Available online 26 February 2014

KEYWORDS

Educational intervention;
Health perception;
Adherence;
Compliance;
Antibiotics

Abstract

Objective: To assess the effectiveness of an educational intervention on antibiotic adherence and patient-reported resolution of symptoms.

Design: A controlled experimental study with systematic assignment to groups.

Setting: A pharmacy in Murcia. Participants were patients who came to the pharmacy with a prescription for antibiotics. Intervention provided information on treatment characteristics (duration, dose and method of use) and correct compliance. A control group received routine care. Main variables "treatment adherence" and "perceived health" were evaluated one week after dispensation by telephone interview.

Results: A total of 126 patients completed the study, 62 in the Control Group (CG) and 64 in the Intervention Group (IG). There were no differences between the groups in baseline characteristics, including the level of knowledge before the intervention. At the end of the study, treatment adherence in the CG was 48.4% (CI: 36.4–60.6), compared with 67.2% (CI: 55.0–77.4) in the IG. The difference of 18.8% was statistically significant ($p=0.033$; 95% CI = 15.8–34.6). Non-compliance through missing more than one dose was 81.2% in the CG versus 38.1% in the IG, which is a statistically significant difference of 43.1% ($p=0.001$; 95% CI = 16.4–63.1%). No significant differences were found in patient-perceived health. Logistic regression showed as predictor of adherence, the medication knowledge and the coincidence between duration of treatment indicated by physician and duration of treatment written in the prescription.

* Corresponding author.

E-mail address: maktub77@hotmail.com (M.F. Dorado).

PALABRAS CLAVE

Intervención educativa;
Percepción de salud;
Adherencia;
Cumplimiento;
Antibióticos

Conclusions: An educational intervention during antibiotic dispensation improves treatment adherence versus routine care.

© 2013 Elsevier España, S.L.U. All rights reserved.

Efecto de una intervención educativa para mejorar la adherencia de los pacientes al tratamiento antibiótico durante la dispensación en una farmacia comunitaria

Resumen

Objetivo: Evaluar la efectividad de la intervención educativa en la adherencia al tratamiento con antibióticos y en la evolución de los síntomas referidos por el paciente.

Diseño: Estudio experimental controlado con asignación sistemática. Emplazamiento: farmacia comunitaria en Murcia. Participantes: pacientes que acudieron a la farmacia con una receta de antibiótico.

Intervención: Aportar información sobre las características del tratamiento (duración, pauta y forma de utilización) y la correcta adherencia. En el grupo Control se procedió a una venta habitual. Mediciones principales: se evaluaron la «adherencia al tratamiento» y la «percepción de salud» a la semana de la dispensación mediante entrevista telefónica.

Resultados: Finalizaron el estudio 126 pacientes: 62 en el Grupo Control (GC) y 64 en el Grupo Intervención (GI). No hubo diferencias entre grupos en las características basales, incluido el nivel de conocimientos previo a la intervención. Tras la intervención, la adherencia al tratamiento en el GC fue del 48,4% (IC 95%: 36,4-60,6) frente al 67,2% (IC 95%: 55,0-77,4) del GI, siendo esta diferencia del 18,8% ($p=0,033$; IC 95%: 15,8-34,6;). La falta de adherencia fue de más de una toma en el 81,2% GC vs el 38,1% GI, diferencia del 43,1% ($p=0,001$; IC 95%: 16,4-63,1%). En la percepción de salud del paciente no se encontraron diferencias. La regresión logística mostró como predictor de adherencia el conocimiento de la medicación y la coincidencia entre la duración del tratamiento indicado por el médico y la duración del envase prescrito en la receta.

Conclusiones: Una intervención educativa durante la dispensación del antibiótico mejora la adherencia al tratamiento frente a una atención habitual.

© 2013 Elsevier España, S.L.U. Todos los derechos reservados.

Introduction

Lack of treatment adherence and self-medication are two of the biggest problems in antibiotic misuse among patients.¹⁻³ Adherence has been specially studied in chronic but not in acute diseases such as infectious diseases.⁴ A meta-analysis found that 37.8% of patients forget to take a dose of antibiotic.⁵ The rate of adherence in this therapy in our country is not well known. Few studies have examined the compliance with antibiotic regimens, with figures between 40 and 60%.^{6,7} The 42% found in the Pan European Survey of Patients was higher than values found in Italy (34%), Belgium (18%), France (16%) and Britain (9%).⁸

Unlike drugs that only affect individual patients, misused antibiotics add the global risk of bacterial resistance, which jeopardizes their effectiveness.⁹ In Spain resistance rates are particularly high and their consequences are serious: resistant bacterial infections are associated with increased morbidity, mortality, health demands, hospitalization, medical expense and impairment of the effectiveness of treatment of future patients.^{10,11}

The WHO Strategy for Containment of Antimicrobial Resistance encourages prescribers and dispensers to educate patients on the proper use of antibiotics and the importance of completing the prescribed treatment.¹²

Results of intervention studies in community pharmacy about improving treatment adherence are variable. A systematic revision conducted in 2005 concluded that it is impossible to identify an overall successful adherence-improving strategy performed by pharmacists and that more well-designed and well-conducted studies need to be performed.¹³

In our country there are few studies that address this question from the sphere of pharmacy; they are of local scope or with design problems, they provide written information and their results are non-significant.^{14,15} For this reason, we considered it important to conduct a study to evaluate the benefit of an oral educational intervention, in terms of increased treatment adherence and symptom improvement or resolution, vs. "routine pharmaceutical care".

Methods

Study population

Our study, the ICAB (*Intervención in Compliance of AntiBiotics*), is a community pharmacy-based, open-label, controlled trial to improve medication adherence in

antibiotic users. The fieldwork took place at a community pharmacy in Murcia, and it covered a period of eight months (January–August 2010).

The study had an experimental design with a control group (CG), which followed routine dispensing practice, and an intervention group (IG), which followed an antibiotic dispensing protocol, as described below.

Patients were eligible for inclusion if they were aged 18 years or older and came to the pharmacy during the study period to collect oral antibiotics prescribed for themselves or someone they were looking after.

Study design

All adult patients who came to the pharmacy with a prescription for an antibiotic were selected until the required sample size was attained. The patients were invited to sign the consent form and only those who gave their consent entered the study.

Assignment to groups was carried out systematically. We randomized if the first patient entered the intervention group or control group through a coin toss, and thereafter patients were assigned consecutively to the IG or the CG.

Interventions

The patients or carers in the IG followed an antibiotic dispensing protocol drawn up by the head pharmacist. For this, a Dispensing Guideline that contained the most important pharmacological data on each antibiotic, using two books for reference,^{16,17} was written. The intervention focused on providing individualized verbal information to the patient or carer about treatment characteristics, duration, dosage regime and how to use the antibiotic. Written information was not provided. The talk took place in an area set apart from the counter, and lasted about 20 min.

The subject's degree of knowledge of the antibiotic was evaluated before the intervention by means of the validated questionnaire by Garcia et al.¹⁸

If the antibiotic was being dispensed for the first time, the pharmacist checked if there were criteria for not dispensing it (clinically relevant interactions or contraindications, in which case the patient was referred to the physician), and the patient understood the process of using the antibiotic, through a knowledge test. If it was not the first time, treatment effectiveness was assessed, checking whether the antibiotic was being used correctly and safely through the same knowledge test. In all cases, if a lack of knowledge was detected, personalized information was provided to make up for it.

In the CG, any questions asked by the patient or carer at their initiative was answered, and the antibiotic was not dispensed if there were any criteria for not doing so.

Variables

Sociodemographic and clinical variables were registered in all cases (Table 1). We measured the coincidence between duration of treatment indicated by physician orally and duration of drugs container written in the prescription.

To determine the effectiveness of the intervention, a telephone interview was carried out seven days after the dispensation. In case of longer duration treatments, the call was delayed until the end date of treatment. The interviewer was blinded to the group allocation of the patient.

The study architecture is summarized in the flowchart.

The adherence to antibiotic treatment was evaluated by a combination of the Morisky–Green test and a self-reported Pill Count.^{19,20} Patients were considered compliant if they were categorized as such in both evaluations, and non-compliant if they were found to be non-compliant in either of the two tests. Patients who took liquid dosage forms were only evaluated using the Morisky–Green test.

Non-treatment-compliant patients were categorized as mild if a single dose was missed, and moderate, if more than one dose was missed.

The subject-perceived health was evaluated by the question: How did you get on with the treatment? The answers were classified as cured, improved, the same, or worse.

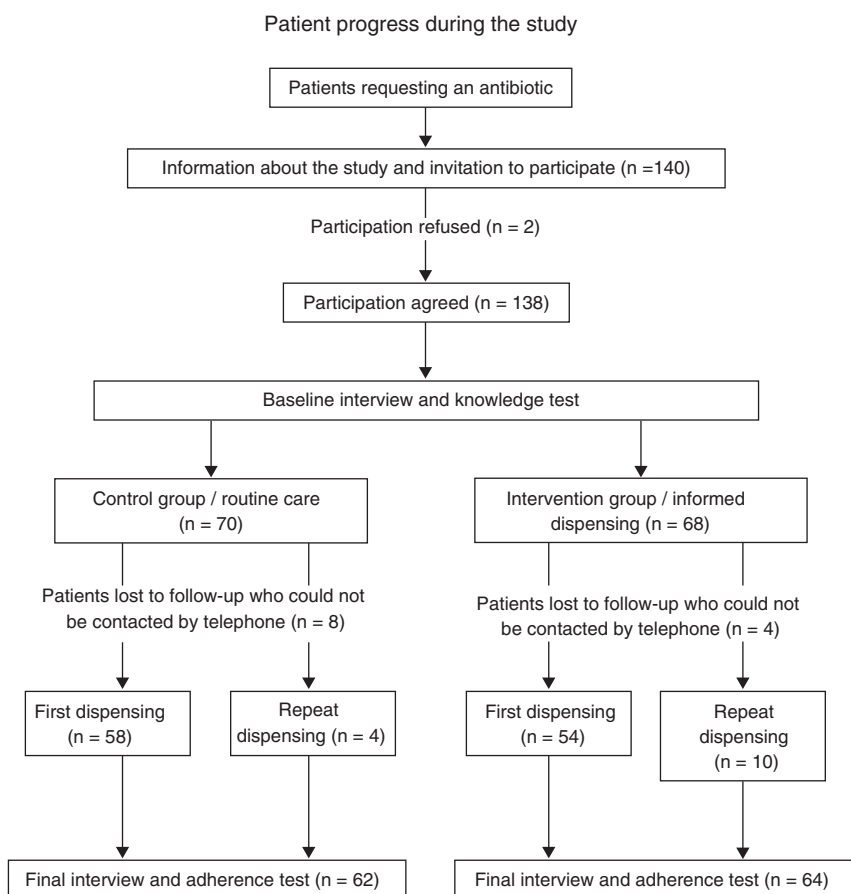
Statistical analysis

The required sample size was calculated in order to make a comparison of two proportions in independent groups, with an 80% power to detect a difference of 25% in adherence, assuming a compliance of 50% in the CG,²⁶ using a two-tailed statistical test and an alpha risk of 0.05. At least 58 patients were required per group. Considering a potential loss to follow-up and dropout rate of 20%, 70 patients were needed to be enrolled in each group.

The statistical package SPSS v.18.0 was used for the data analysis. Qualitative variables were expressed as percentages and quantitative variables as mean and standard deviation (SD). Confidence intervals (CI) were calculated at 95%. The Pearson Chi-square test was used to compare qualitative variables.

To assess potential factors associated with treatment adherence, a binary logistic regression model was drawn up using the backward stepwise method (likelihood ratio).

The logistic regression model was used to analyze the association of the dichotomous dependent variable (adherence to antibiotic treatment) and a set of independent variables. The model included as predictors variables that were statistically significant in the bivariate analysis ($p < 0.1$).



General outline of the study:

Results

Of the 138 patients initially included, 12 were lost to follow-up because they could not be contacted by telephone. There were no statistically significant differences, so the 126 valid cases (62 CG vs. 64 IG) were analyzed.

The groups were comparable by the sociodemographic and clinical variables (Table 1). In the CG, the mean age was 44.8 years (SD=17.7) and in the IG it was 44.5 years (SD=18.2). There was a majority of women in both groups (69.4% and 65.6% in the CG and IG, respectively). No significant differences in the degree of knowledge were found between the groups.

Adherence to antibiotic treatment was 48.4% (CI: 36.4–60.6) in the CG and 67.2% (CI: 55.0–77.4) in the IG, with a difference of 18.8% (95% CI = 15.8–34.6; $p=0.033$). Moderate non-compliance (more than one dose intake missing) was observed in 81.2% of patients in the CG and in 38.1% in the IG, with a difference of 43.1% (95% CI = 16.4–63.1%; $p=0.001$).

There was no significant difference in the health perception, although it was higher in the IG, with reports of being “totally cured” in 54.7% (95% IC = 42.6–66.3) in the IG and in 46.8% (95% IC = 34.9–59.0) in the CG ($p=0.297$).

Results of the bivariate analysis are presented in Table 2. Variables with a $p < 0.1$ were selected to be included in the regression model. The logistic regression analysis confirmed a group effect (OR 2.23; 95% CI = 1.01–4.93; $p=0.047$). The

variables that positively influenced adherence were the knowledge of the antibiotic treatment before the intervention (OR 3.06; 95% CI = 1.34–6.99) and coincidence between duration of treatment indicated by physician and duration of drugs container written in the prescription (OR 2.84; 95% CI = 1.16–6.99). The use of beta-lactams has a negative influence (OR 0.32; 95% CI = 0.14–0.72). This model used 99.2% of the study sample. The model goodness-of-fit was good as assessed by the Hosmer–Lemeshow test (χ^2 4.7; $p=0.786$).

Discussion

The study results show that implementing an educational intervention when patients come to a pharmacy to collect antibiotics that they have been prescribed, increases adherence to the treatment. However, this does not mean that the patient will feel cured at the end of the treatment course. The educational intervention in this study was effective, with an 18.8% difference in compliance between the CG and the IG.

A meta-analysis and a Cochrane review found interventions carried out by health professionals (physicians, nurses, pharmacists) to be effective on treatment adherence,^{21,22} but pharmaceutical interventions found mixed results^{13,23–25} and it is difficult to identify an overall successful strategy improving adherence – performed by pharmacists. In our country, there have been positive results

Table 1 Comparison of sociodemographic and clinical variables between control group and intervention group.

Variables	CG (n = 62)	IG (n = 64)	p-Value
<i>Mean age (SD)</i>	44.8 (17.7)	44.5 (18.2)	0.85
<i>Age range n (%)</i>			
<18 years	2 (3.2%)	1 (1.6%)	0.68
18–44	28 (45.2%)	34 (53.1%)	
45–64	24 (38.7%)	21 (32.8%)	
65–74	4 (6.5%)	3 (4.7%)	
>75	4 (6.5%)	5 (7.8%)	
<i>Gender n (%)</i>			
Male	19 (30.6%)	22 (34.4%)	0.66
Female	43 (69.4%)	42 (65.6%)	
<i>User n (%)</i>			
Own use	52 (83.9%)	50 (78.1%)	0.41
Carer	10 (16.1%)	14 (21.9%)	
<i>Country of origin n (%)</i>			
Foreign country	7 (11.3%)	2 (3.1%)	0.07
Spain	55 (88.7%)	62 (96.9%)	
<i>Educational level n (%)</i>			
University	30 (48.4%)	44 (68.8%)	0.12
Secondary school	18 (29.0%)	13 (20.3%)	
Primary school	12 (19.4%)	6 (9.4%)	
No schooling	2 (3.2%)	1 (1.6%)	
<i>Profession n (%)</i>			
Student	10 (16.1%)	9 (14.1%)	0.14
Managerial/business	3 (4.8%)	3 (4.7%)	
University jobs/civil servants	18 (29%)	30 (46.9%)	
Administrative/sales	9 (14.5%)	12 (18.8%)	
Labour	6 (9.7%)	4 (6.3%)	
Housewife/pensioner/unemployed	16 (25.8%)	6 (9.4%)	
<i>Site of infection n (%)</i>			
Respiratory	26 (41.9%)	29 (45.3%)	0.46
Dental	22 (35.5%)	15 (23.4%)	
Genitourinary	9 (14.5%)	12 (18.8%)	
Others	5 (8.1%)	8 (12.5%)	
<i>Type of antibiotic n (%)</i>			
Betalactamic	34 (54.8%)	31 (48.4%)	0.83
Macrolide	13 (21%)	14 (21.9%)	
Fluoroquinolone	5 (8.1%)	8 (12.5%)	
Others	10 (16.1%)	11 (17.2%)	
<i>Time using antibiotic n (%)</i>			
First dispensing	58 (93.5%)	54 (84.4%)	0.10
Repeat dispensing	4 (6.5%)	10 (15.6%)	
<i>Match duration^a</i>			
Yes	44 (71%)	49 (77.8%)	0.38
<i>Knows the name of the drug^b</i>			
Yes	29 (46.8%)	37 (57.8%)	0.21
<i>Number of medications^c</i>			
None	11 (7.7%)	16 (25.4%)	0.16
Monotherapy	15 (24.2%)	22 (34.9%)	
Complex therapy ^d	31 (50%)	19 (30.2%)	
Polymedicated ^e	5 (8.1%)	6 (9.5%)	

Table 1 (Continued)

Variables	CG (n = 62)	IG (n = 64)	p-Value
<i>Concerned about health problem n (%)</i>			
Quite concerned	14 (22.6%)	24 (37.5%)	0.19
Normal level	17 (27.4%)	15 (23.4%)	
Fairly unconcerned	31 (50%)	25 (39.1%)	
<i>Level of knowledge of antibiotic treatment</i>			
No knowledge	26 (41.9%)	33 (51.6%)	0.58
Insufficient	5 (8.1%)	3 (4.7%)	
Sufficient	27 (43.5%)	26 (40.6%)	
Optimum	4 (6.5%)	2 (3.1%)	
<i>Treatment adherence</i>			
Yes	30 (48.4%)	43 (67.2%)	0.033
<i>Level of non-adherence</i>			
Mild	6 (18.8%)	13 (61.9%)	0.001
Moderate ^f	26 (81.2%)	8 (38.1%)	
<i>Patient-perception of health</i>			
Worse	2 (3.2%)	0.0%	0.30
Same	6 (9.7%)	9 (14.1%)	
Improved	25 (40.3%)	20 (31.3%)	
Cured	29 (46.8%)	35 (54.7%)	

SD, standard deviation.

^a Match between duration of treatment indicated and prescribed.

^b The patient knows the name of the drug.

^c Number of medications the patient is taking excluding the antibiotic.

^d 2–4 medications.

^e 5 or more medications.

^f Missing more than one dose.

following the intervention of hospital pharmacists in patients with other pathologies, albeit with a small sample size²⁶. In a community pharmacy, Machuca et al. achieved a 14% increase in the antibiotics adherence.¹⁴ Andres et al. also improved adherence, although the differences were not statistically significant.¹⁵ The intervention in these studies was done with written information, and their results were not strong. The results of our study provide valuable information about the effectiveness of oral interventions on the treatment adherence in the community pharmacies, which are close and accessible to the patient, and should be used to actively work with other health professionals in the appropriate use of antibiotics.

The adherence in the IG was higher than average antibiotic therapy adherence reported in Spain by Gil et al., although it is very similar to that found by other authors.^{6,19} This difference may be related to the measuring method, as Gil et al. used the technique of pill counts, while the other two used the telephone interview. Factors that were not evaluated and that can influence adherence are the duration of the treatments and the level of education of the study population.

Our results are lower than those found in a meta-analysis conducted internationally,⁵ and the difference may be related to the high rate of resistance in our country.⁸ It is difficult to maintain the effectiveness of adherence interventions over time, and this can explain the better results in acute diseases.

No significant differences were found between groups with regard to patient-perceived health. This may be due to the fact that the infectious process is self-limiting in most cases and resolves without intervention in a short time. Different studies show that there is a relationship between health as perceived by patients and their adherence to treatment.^{19,27} It therefore seems important to analyze this variable. However, we must bear in mind that we measured the perceived health through a single direct question to the patient, so the results need to be interpreted with caution.

Patients frequently report discontinuing antibiotic therapy when they begin to feel better or when adverse events occur.²⁸ This might be the main cause of the existence of antibiotics at home²⁹ and of self-medication, in few cases responsible for the emergence of resistance.^{8,29}

Logistic regression showed an association between adherence and the coincidence between the duration of treatment orally indicated by the physician and the duration of treatment written on the prescription. The mismatch between the duration of antibiotic treatment and the format in which drugs are manufactured sometimes makes more than one container necessary, and therefore more than one prescription to end the treatment. This could be a barrier for patients to successfully complete their treatment. In August 2012, the Spanish Agency for Medicines and Health Products issued a Resolution on matching therapeutic drug formats (J01 and J02 group), urging manufacturers to adapt to proper formats for these treatments.³⁰

Table 2 Bivariate analysis of individuals with good adherence and binary logistic regression for the variable: treatment adherence.

Variables	OR	CI95%	p-Value*
<i>Group to which the patient</i>			
CG/IG	2.18	1.06–4.49	0.025
Mean age (SD)	1.01	0.99–1.03	0.24
<i>Age range</i>			
<18 years (referent)			0.68
18–44	0.42	0.04–4.27	0.46
45–64	0.40	0.04–4.10	0.44
65–74	1.33	0.06–31.12	0.86
>75	0.78	0.06–10.86	0.85
<i>Gender</i>			
Male/female	1.04	0.49–2.21	0.54
<i>User</i>			
Own use/carer	1.02	0.41–2.51	0.58
<i>Country of origin</i>			
Spain/foreign country	1.49	0.36–6.26	0.43
<i>Educational level</i>			
Primary school (referent)			0.99
Secondary school	1.04	0.349–3.18	0.957
University	1.04	0.39–2.77	0.94
<i>Profession</i>			
Housewife/pensioner/unemployed (referent)			0.39
Labour	1.04	0.23–4.77	0.96
Administrative/sales	0.63	0.19–2.10	0.45
University jobs/civil servants	1.52	0.53–4.34	0.43
Managerial/business	0.69	0.11–4.24	0.69
Student	0.50	0.15–1.75	0.28
<i>Site of infection</i>			
Others (referent)			0.37
Respiratory	2.59	0.75–8.98	0.13
Genitourinary	3.20	0.76–13.50	0.11
Dental	1.88	0.52–6.85	0.34
<i>Type of antibiotic</i>			
Betalactamic (1 = yes)	0.36	0.17–0.75	0.006
Macrolide (1 = yes)	4.14	1.45–11.81	0.004
Fluoroquinolone (1 = yes)	1.72	0.50–5.92	0.29
<i>Time using antibiotic</i>			
First dispensation/repeat dispensation	0.81	0.27–2.39	0.45
<i>Match duration^a</i>			
(1 = yes)	3.03	1.32–6.97	0.007
<i>Knows the name of the drug^b</i>			
(1 = yes)	0.97	0.48–1.97	0.54
<i>Number of medications^c</i>			
None (referent)			0.067
Monotherapy	0.69	0.25–1.92	0.47
Complex therapy (2–4)	0.43	0.16–1.13	0.086
Polymedicated (5 or more)	5.00	0.55–45.39	0.15
<i>Concerned about health problem</i>			
Quite concerned (referent)			0.086
Normal level of concern	0.37	0.15–0.92	0.029
Fairly unconcerned	0.58	0.25–1.37	0.22

Table 2 (Continued)

Variables	OR	CI95%	p-Value ^a
<i>Level of knowledge^d</i> (1 = known)	2.17	1.05–4.48	0.027
<i>Patient-perception of health</i>			
Worse (referent)			0.69
Same	1.44	0.64–6.09	0.39
Improved	0.68	0.22–2.10	0.50
Cured	0.78	0.05–12.99	0.86
<i>Binary logistic regression for the variable: treatment adherence</i>			
Level of knowledge (1 = known)	3.06	1.34–6.99	0.008
Betalactamic (1 = yes)	0.32	0.14–0.72	0.006
Match duration (1 = yes)	2.84	1.16–6.98	0.023
Group to which the patient (1 = IG)	2.23	1.01–4.94	0.047
Constant	0.47		0.16

CI, confidence interval.

^a p-value <0.1 is taken for the multivariable analysis.

^a Match between duration of treatment indicated and prescribed.

^b The patient knows the name of the drug.

^c Number of medications the patient is taking excluding the antibiotic.

^d Level of knowledge of antibiotic treatment is regrouped into two categories, "known" (No knowledge and Insufficient Knowledge) and "not known" (Sufficient Knowledge and Optimum Knowledge) for the bivariate analysis.

Logistic regression also showed that medication knowledge is correlated with medication adherence. This finding is according to a recent publication.³¹ Therefore improvement in the patient's knowledge would bear a positive effect on adherence, and patient education in the proposed dispensing protocol is considered to be an implicit strategy for improving compliance. Pharmacists should be encouraged to play a proactive role in large-scale health education programmes.

We evaluated patients' baseline knowledge with a validated questionnaire – this is a strong point of our study, as it is the first validated questionnaire to specifically assess knowledge of patient medication.²⁰

The study has the **limitations** inherent to using different indirect tests, which tend to overestimate adherence, although the use of two different methods can reduce the bias. A contamination effect could have occurred considering that both groups have antibiotics dispensed from the same site, and the intervention effect could have been increased. The study was conducted in a local setting, so the results cannot be extrapolated to wider settings. The patient allocation was not randomized, and this can be a design of weakness. For future studies it would be advisable to use a randomized clinical trial design, in order to eliminate this possible bias.

In conclusion, pharmaceutical intervention increased antibiotic adherence in this community pharmacy. The results suggest that knowledge is an important factor associated to adherence, and that an intervention aimed at increasing it may improve adherence. Thereby, this report also reinforces the pharmacists' role in improving the health care system and they should be strengthened as educators in the rational use of medicines. It is necessary to conduct multicenter studies to support this thesis, to verify that the

implementation of these services in the pharmacy is, not only effective, but also feasible and compatible with the rest of the activities.

What is known on this topic?

- Lack of treatment adherence and self-medication are two of the biggest problems in antibiotic misuse among patients.
- The rate of adherence in antibiotic therapy in our country is not well known.
- Intervention studies in community pharmacy about improving adherence to treatment have obtained different results.

What does this study contribute to the literature?

- The research results indicate that the contribution of personalized information orally during the dispensing could increase adherence to treatment.
- Pharmacists can improve adherence to treatment with antibiotics, so it will be more effective treatments and could limit the emergence of antibiotic resistance.
- The community pharmacy is a healthcare area close and accessible to the patient, and should be exploited to actively work with other health professionals in the appropriate use of antibiotics.

References

1. Baos V, Barbero A, Diogene E, Eguilleor A, Eyaralar T, Ibáñez J, et al. Documento de consenso sobre el uso de antibióticos en atención primaria. *Aten Primaria*. 2006;38:174–7.
2. Grigoryan L, Haaijer-Ryskamp FM, Burgerhof JG, Mechtler R, Deschepper R, Tambic-Andrasevic A, et al. Self-medication with antimicrobial drugs in Europe. *Emerg Infect Dis*. 2006;12:452–9.
3. Sorensen SV, Baker T, Fleurence R, Dixon J, Roberts C, Haider S, et al. Cost and clinical consequence of antibiotic non-adherence in acute exacerbations of chronic bronchitis. *Int J Tuberc Lung Dis*. 2009;13:945–54.
4. Haynes RB, Yao X, Degani A, Kripalani S, Garg A, McDonald HP. Interventions to enhance medication adherence. *Cochrane Database Syst Rev*. 2005:CD000011.
5. Kardas P, Devine S, Golembesky A, Roberts C. A systematic review and meta-analysis of misuse of antibiotic therapies in the community. *Int J Antimicrob Agents*. 2005;26:106–13.
6. Gil V, Payà MA, Asensio MA, Torres MT, Pastor R, Merino J. Non-compliance of the treatment with antibiotics in non-severe acute infections. *Med Clin (Barc)*. 1999;112:731–3.
7. Llor C, Sierra N, Hernández S, Bayona C, Hernández M, Moragas A, et al. Compliance rate of antibiotic therapy in patients with acute pharyngitis is very low, mainly when thrice-daily antibiotics are given. *Rev Esp Quimioter*. 2009;22:20–4.
8. Branthwaite AR, Pechère JC. Pan-European survey of patients attitudes to antibiotics and use. *J Int Med Res*. 1996;24:229–38.
9. Goossens H, Ferech R, Vander R, Elseviers M. Outpatient antibiotic use in Europe and association with resistance: a cross-national database study. *Lancet*. 2005;365:579–87.
10. Pérez-Trallero E, Martín-Herrero JE, Mazón A, García-Delafuente C, Robles P, Iriarte V, et al., and the Spanish Surveillance Group for Respiratory Pathogens. Antimicrobial resistance among respiratory pathogens in Spain: latest data and changes over 11 years (1996–1997 to 2006–2007). *Antimicrob Agents Chemother*. 2010;54:2953–9.
11. Shehan B, Patel PR, Srinivasan A, Budnitz DS. Emergency department visits for antibiotic-associated adverse events. *Clin Infect Dis*. 2008;47:744–6.
12. Spanish version of WHO Global Strategy for Containment of Antimicrobial Resistance consulted in March 2012. http://www.antibioticos.msc.es/PDF/resist_OMS_estrategia_mundial_resumen.pdf [accessed 12.08.12].
13. Van Wijk BLG, Van Wijk BL, Klungel OH, Heerdink ER, de Boer A, et al. Effectiveness of interventions by community pharmacists to improve patient adherence to chronic medication: a systematic review. *Ann Pharmacother*. 2005;39:319–28.
14. Machuca M, Espejo J, Gutierrez L, Machuca MP, Herrera J. The effect of written information provided by pharmacists on compliance with antibiotherapy. *Ars Pharmaceutica*. 2003;44:141–57.
15. Andrés JC, Andrés NF, Fornos JA. Assessing pharmacist intervention on antibiotic therapy adherence. *Seguim Farmacoter*. 2004;2:97–102.
16. Faus MJ, Amariles P, Martínez F. *Pharmaceutical care: concepts, processes and practical cases*. Madrid: Argón; 2008. ISBN: 978-84-8473-609-7.
17. Flores-Dorado M. In: Martínez F, Faus MJ, editors. *Drug utilization guide. Antibiotics*. 2008. ISBN: 978-84-608-0852-7.
18. García Delgado P, Gastelurrutia Garralda M.Á., Baena Parejo MI, Fisac Lozano F, Martínez Martínez F. Validation of a questionnaire to assess patient knowledge of their medicines. *Aten Primaria*. 2009;41:661–8.
19. Morisky DE, Green LW, Levine DM. Concurrent and predictive validity of a self-reported measure of medication adherence. *Med Care*. 1986;24:67–74.
20. Roth HP, Caron HS, Hsi BP. Measuring intake of a prescribed medication: a bottle count and a tracer technique compare. *Clin Pharmacol Ther*. 1970;11:228–37.
21. Peterson AM, Takiya L, Finley R. Meta-analysis of trials of interventions to improve medication adherence. *Am J Health Syst Pharm*. 2003;60:657–65.
22. M'imunya JM, Kredt T, Volmink J. Patient education and counselling for promoting adherence to treatment for tuberculosis. *Cochrane Database Syst Rev*. 2012;16:CD006591.
23. Clark PM, Karagoz T, Apikoglu-Rabus S, Izzettin FV. Effect of pharmacist-led patient education on adherence to tuberculosis treatment. *Am J Health Syst Pharm*. 2007;64:497–505.
24. Johnson KA, Gazmararian J, Jacobson KL, Pan Y, Schmotzer B, Kripalani S, et al. Effect of a pharmacy-based health literacy intervention and patient characteristics on medication refill adherence in an urban health system. *Ann Pharmacother*. 2010;44:1877–86.
25. Morgado MP, Morgado SR, Mendes LC, Pereira LJ, Castelo-Branco M. Pharmacist interventions to enhance blood pressure control and adherence to antihypertensive therapy: review and meta-analysis. *Am J Health Syst Pharm*. 2011;68:241–53.
26. Sánchez-Gili M, Toro-Chico P, Pérez-Encinas M, Gómez-Pedrero AM, Portolés-Pérez JM. Pharmaceutical intervention on the therapeutic adherence in patients with chronic renal disease. *Rev Calid Asist*. 2011;26:146–51.
27. Rodríguez MA, García-Jiménez E, Rodríguez A, Pérez EM, Amariles P, Martínez-Martínez F, et al. Influence of sociodemographics and clinical characteristics in the adherence of pharmacological treatment of patients with cardiovascular risk. *Pharm Care Esp*. 2012;14:138–45.
28. Pechere JC. Parameters important in short antibiotic courses. *J Int Med Res*. 2000;28 Suppl. 1:3A–12A.
29. González J, Orero A, Prieto J. Storage of antibiotics in Spanish households. *Rev Esp Quimioter*. 2006;19:275–85.
30. Resolution of the Spanish Agency for Medicines and Health Products on matching formats drugs group J01 and J02 therapeutic. http://www.aemps.gob.es/informa/notasInformativas/medicamentosUsoHumano/2012/NI-AEMPS_09-2012.htm [accessed 02.08.12].
31. Okuyan B, Sancar M, Izzettin FV. Assessment of medication knowledge and adherence among patients under oral chronic medication treatment in community pharmacy settings. *Pharmacoepidemiol Drug Saf*. 2013;22:209–14.