

SCIENTIFIC REPORTS



OPEN

Temporal trends in initiation of VKA, rivaroxaban, apixaban and dabigatran for the treatment of venous thromboembolism - A Danish nationwide cohort study

Caroline Sindet-Pedersen^{1,2,3}, Jannik Langtved Pallisgaard^{1,2}, Laila Staerk^{1,2}, Jeffrey S. Berger³, Morten Lamberts^{1,4}, Christian Torp-Pedersen^{1,5}, Gunnar H. Gislason^{1,2,6,7} & Jonas Bjerring Olesen¹

Danish nationwide registries were used to investigate temporal trends in initiation of rivaroxaban or apixaban or dabigatran versus vitamin K antagonists (VKA) in patients with venous thromboembolism (VTE). Patients treated with one of the NOACs (rivaroxaban, dabigatran, apixaban) or VKA were identified between February 2012 and September 2016. A total of 19,578 patients were included of which 10,844 (55.4%) were treated with VKA and 8,734 (44.6%) were treated with NOACs (rivaroxaban 7,572, apixaban 1,066, and dabigatran 96). Temporal trends showed a decrease in the initiation of VKA (p-value for decreasing trend, $p < 0001$) and an increase in the initiation of rivaroxaban and apixaban (p-value for increasing trend, $p < 0001$). By September 2016, 12%, 70%, 16%, and 2% of patients with VTE were initiated on VKA, rivaroxaban, apixaban, and dabigatran. Patients with previous VTE, chronic kidney disease, liver disease, cancer, and thrombophilia were more likely to be initiated on VKA compared with one of the NOACs. In conclusion the initiation of rivaroxaban and apixaban is increasing significantly over time in patients with VTE. Patients with previous VTE, chronic kidney disease, liver disease, cancer, and thrombophilia were more likely to be initiated on VKA compared with rivaroxaban or apixaban.

For decades, vitamin K antagonists (VKA) have been the foundation of treatment of venous thromboembolism (VTE)^{1,2}. While VKA is effective in treating VTE, the treatment has several drawbacks, which includes narrow therapeutic interval, need for frequent blood tests, bridging therapy, and interactions with food and drugs^{1,3,4}. This has encouraged the development of non-VKA antagonist oral anticoagulants (NOACs)^{1,2}. Randomized controlled trials have investigated the safety and efficacy of the individual NOACs compared with VKA, finding these agents non-inferior to VKA with regard to efficacy, and associated with either equal or lower risk of major bleeding⁵⁻⁹. In Denmark, rivaroxaban was the first NOAC to be approved for the treatment of VTE (6th of February 2012), followed by dabigatran (6th of June 2014) and apixaban (31st of July 2014). The American College of Chest Physicians treatment guidelines for VTE now recommend the initiation of a NOAC over VKA in patients without cancer, renal impairment, and liver disease¹⁰. Danish and European guidelines do not differentiate between the individual NOACs or VKA for the treatment of VTE¹¹. Knowledge on the real-world initiation of NOACs for VTE is lacking and it is expected that the use of NOACs has increased since their approval and thus replacing the

¹Department of Cardiology, Copenhagen University Hospital Herlev and Gentofte, 2900, Hellerup, Denmark.

²Faculty of Health and Medical Sciences, University of Copenhagen, 2200, Copenhagen N, Denmark. ³New York University School of Medicine, New York, New York, USA. ⁴Department of Cardiology, Copenhagen University Hospital Rigshospitalet, 2100, Copenhagen Ø, Denmark. ⁵Department of Health, Science and Technology, Aalborg University, and Department of Epidemiology/Biostatistics and Cardiology, Aalborg University Hospital, Aalborg, Denmark. ⁶The National Institute of Public Health, University of Southern Denmark, 1353, Odense, Denmark. ⁷The Danish Heart Foundation, 1127 Copenhagen K, Copenhagen, Denmark. Correspondence and requests for materials should be addressed to C.S. (email: carolinesindet@gmail.com)

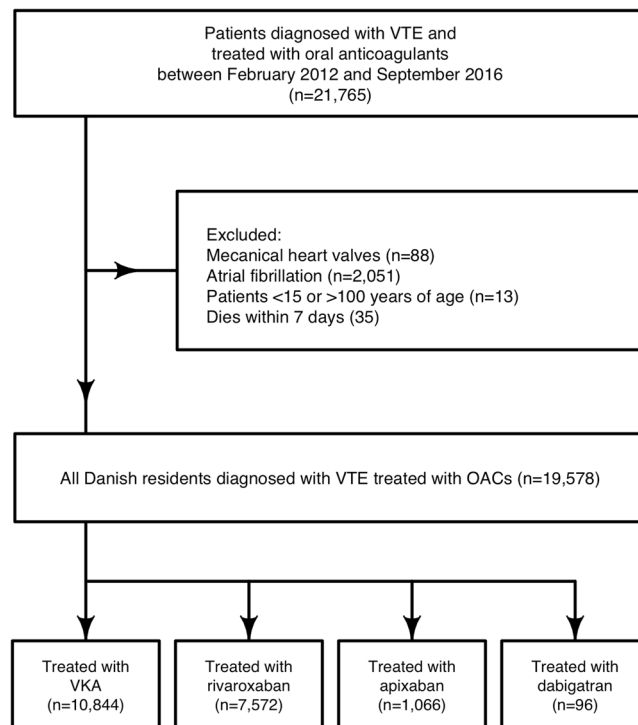


Figure 1. Selection of study cohort. Flow chart of selection process for the study population in the period between February 2012 and September 2016.

role of VKA. Little is known about which patients initiate rivaroxaban, apixaban or dabigatran versus VKA. The aims of this study were i) to examine temporal trends in initiation of the individual NOACs and VKA in VTE patients; ii) to assess potential differences in patient characteristics between those who initiate OAC treatment with one of the individual NOACs versus VKA.

Results

A total of 21,765 patients were eligible for inclusion (Fig. 1). After excluding patients, the study population comprised 19,578 patients of, which 10,844 (55.4%) were treated with VKA, 7,572 (38.7%) were treated with rivaroxaban, 1,066 (5.4%) were treated with apixaban, and 96 (0.5%) were treated with dabigatran (Table 1). In the study population a total of 11,772 (60.2%) patients had deep vein thrombosis (DVT) as inclusion event, and 7,806 (39.8%) patients had pulmonary embolism (PE) as inclusion event. Patients with DVT accounted for 61.9%, 59.9%, 44.2%, 52.1%, and 59.9% and in the VKA, rivaroxaban, apixaban, and dabigatran group respectively.

Temporal initiation. VKA was the preferred treatment at the beginning of the study period, with a steadily decline in the initiation until September 2016 (p-value for decreasing trend < 0001) (Fig. 2). An increase in the initiation of rivaroxaban was observed in the same period (p-value for increasing trend < 0001) (Fig. 2, and Supplementary Figure 1). By September 2016, 70% of patients with VTE were initiated on rivaroxaban vs. 12% initiated on VKA. From August 2014 to September 2016, the initiation of apixaban in patients with VTE increased from 1% to 16% (p-value for increasing trend < 0001). The use of dabigatran remained low during the whole study period, with 2% of patients with VTE initiated on dabigatran by September 2016 (Fig. 2). Similar observations were noted in patients with DVT or PE. By September 2016, 12%, 71%, 15% and 2% of patients diagnosed with DVT were initiated on VKA, rivaroxaban, apixaban and dabigatran respectively. Similarly 6%, 69% 25% and 0% of patients diagnosed with PE, were initiated on VKA, rivaroxaban, apixaban and dabigatran, respectively.

Factors associated with initiation of a NOAC versus VKA. Table 2 shows factors associated with initiation of rivaroxaban, apixaban or dabigatran vs. VKA. Patients with previous VTE, chronic kidney disease, cancer, and thrombophilia were more likely to be initiated on VKA compared with either rivaroxaban or apixaban. However, because of the low number of patients in the dabigatran group, there were no significant differences in any factors associated with initiation of dabigatran vs. VKA. Patients with ischemic heart disease, liver disease, hypertension, previous stroke, and COPD were significantly more likely to be initiated on VKA compared with rivaroxaban. Patients older than 75, or patients with pulmonary embolism as index event, were significantly more likely to be initiated on apixaban compared with VKA. When dividing patient according to inclusion event (DVT or PE), similar factors were found to be associated with initiation of either one of the NOACs vs. VKA (Supplementary Tables 3 and 4). When the total NOAC group was compared with the VKA group, similar results were found in patients with VTE, DVT and PE (Supplementary Table 5).

	VKA (10,844)	Rivaroxaban (n = 7,572)	Apixaban (n = 1,066)	Dabigatran (96)
Patient characteristic				
Median age (IQR ⁺)	66 [53–76]	66 [52–76]	69 [55–79]	71 [59–80]
Males (%)	5,775 (53.3)	4,109 (54.3)	532 (49.9)	45 (46.9)
Index event (%)				
PE	4,130 (38.1)	3,035 (40.1)	595 (55.8)	46 (47.9)
DVT	6,714 (61.9)	4,537 (59.9)	471 (44.2)	50 (52.1)
Comorbidities (%)				
Previous venous thromboembolism	1,973 (18.2)	911 (12.0)	101 (9.5)	10 (10.4)
Previous bleeding	1,099 (10.1)	691 (9.1)	111 (10.4)	9 (9.4)
Stroke	759 (7.0)	420 (5.5)	88 (8.3)	8 (8.3)
Acute myocardial infarction	426 (3.9)	205 (2.7)	51 (4.8)	<3
Ischemic heart disease	1,249 (11.5)	676 (8.9)	148 (13.9)	6 (6.2)
Peripheral vascular disease	307 (2.8)	148 (2.0)	23 (2.2)	3 (3.1)
Vascular disease	685 (6.3)	342 (4.5)	69 (6.5)	5 (5.2)
Chronic heart failure	509 (4.7)	332 (4.4)	49 (4.6)	4 (4.2)
Chronic kidney disease	550 (5.1)	188 (2.5)	38 (3.6)	0 (0.0)
Liver disease	224 (2.1)	112 (1.5)	21 (2.0)	<3
Hypertension	2,796 (25.8)	1,723 (22.8)	286 (26.8)	16 (16.7)
Diabetes mellitus	839 (7.7)	542 (7.2)	88 (8.3)	7 (7.3)
Cancer	1,499 (13.8)	844 (11.1)	134 (12.6)	15 (15.6)
COPD	1077 (9.9)	618 (8.2)	123 (11.5)	16 (16.7)
Thrombophilia §	211 (1.9)	71 (0.9)	4 (0.4)	0 (0.0)
Alloplastic surgery	205 (1.9)	169 (2.2)	23 (2.2)	<3
Concomitant medication (%)				
ADP-receptor blockers	518 (4.8)	366 (4.8)	84 (7.9)	10 (10.4)
Aspirin	1,814 (16.7)	1,016 (13.4)	167 (15.7)	10 (10.4)
Diuretics	2,436 (22.5)	1,509 (19.9)	250 (23.5)	18 (18.8)
Beta-blockers	1,649 (15.2)	969 (12.8)	169 (15.9)	8 (8.3)
Calcium channel blockers	1,701 (15.7)	1,023 (13.5)	177 (16.6)	10 (10.4)
Renin-angiotensin system blockers	3,055 (28.2)	1,939 (25.6)	310 (29.1)	21 (21.9)
Loop diuretics	1,417 (13.1)	785 (10.4)	140 (13.1)	16 (16.7)
Ulcer medication	2,555 (23.6)	1,625 (21.5)	284 (26.6)	24 (25.0)
Lipid modifying agents	2,188 (20.2)	1,420 (18.8)	232 (21.8)	14 (14.6)
Hormone replacement therapy	601 (5.5)	448 (5.9)	68 (6.4)	4 (4.2)
Oral contraceptives	547 (5.0)	367 (4.8)	41 (3.8)	<3
Non steroidal anti-inflammatory drugs	2,041 (18.8)	1,437 (19.0)	209 (19.6)	17 (17.7)

Table 1. Table of patient characteristics in apixaban, dabigatran, VKA and rivaroxaban groups.

⁺IQR = Interquartile Range. [§]Thrombophilia (factor v Leiden, prothrombin mutation, protein C, S, and antithrombin deficiency, antiphospholipid syndrome and cardiophilin syndrome). PE: Pulmonary embolism. DVT: Deep venous thromboembolism. COPD: Chronic obstructive pulmonary disease.

Discussion

This study investigated temporal trends in the initiation of oral anticoagulation therapy in patients with VTE. This study had two main findings: i) initiation of VKA declined whereas initiation of rivaroxaban and apixaban increased since their approval, while there were no temporal difference in the initiation of dabigatran. ii) Patients with chronic kidney disease, liver disease, thrombophilia, previous VTE, and cancer were more likely to be initiated on VKA compared with rivaroxaban or apixaban.

The cumbersome treatment with VKA has urged the development of NOACs, and results from this study showed that especially the initiation of rivaroxaban is being extensively implemented into clinical practice. Similar to this study, Badreldin *et al.*¹² found in a cohort of VTE patients that only 2% of patients initiated dabigatran compared with 53%, 40%, and 5% initiated on rivaroxaban, apixaban, and edoxaban, respectively¹². A plausible explanation for the low initiation of dabigatran could be that the treatment needs to be accompanied by parenteral heparin for at least 5 days⁷. In the RECOVER (Dabigatran versus warfarin in the treatment of acute venous thromboembolism) I and II trials, parenteral heparin was used for a median length of 7 days post-randomization; hence evidence is lacking to support the use of dabigatran as mono-therapy without initial concomitant treatment with heparin^{7,9,13}. On the contrary, rivaroxaban and apixaban were studied as mono-therapy in the

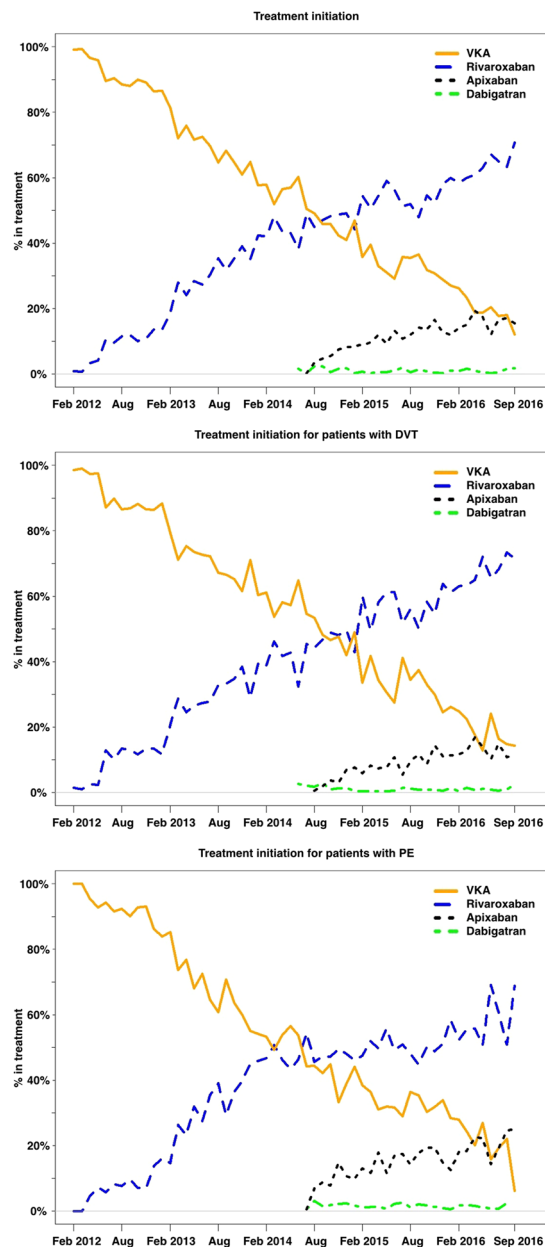


Figure 2. Temporal trends in initiation of anticoagulation therapy. Graph of temporal trend over initiation of oral anticoagulation therapy in patients with venous thromboembolism (VTE). Percentage of patients with VTE, pulmonary embolism (PE) or deep venous thromboembolism (DVT) initiating VKA, rivaroxaban, apixaban or dabigatran per month between February 2012 and September 2016. Rivaroxaban: p-value for increasing trend < 0.001, apixaban: p-value for increasing trend < 0.001, dabigatran: p-value for increasing trend < 0.991. VKA: p-value for decreasing trend < 0.001.

EINSTEIN (Oral rivaroxaban for symptomatic venous thromboembolism and oral rivaroxaban for symptomatic pulmonary embolism) trial and in the AMPLIFY (Oral apixaban for the treatment of acute venous thromboembolism) trial^{5,6,14}. Hence, the advantage of using dabigatran over either rivaroxaban or apixaban may be perceived as less apparent.

Results from this study showed that the odds of initiating treatment with NOACs in patients with cancer, renal impairment, and liver disease were significantly lower compared with VKA. The trials that established the safety and effectiveness of NOACs were not designed to investigate outcomes in patients with cancer, chronic kidney disease, or liver disease as most of these patients were excluded^{5-7,9,13}. In our study, patients were classified as having had previous cancer that had occurred up to ten years prior to their diagnosis of VTE, thus there was no differentiation between active or previous cancer. In general, patients with active cancer are given parenteral anticoagulation therapy, sometimes as bridging to VKA^{10,11}. These patients have a poor prognosis, complicated by a high risk of recurrent VTE and high risk of bleeding¹⁵⁻¹⁷. The lower odds for initiating patients with cancer on

variables	Odds ratios		
	Rivaroxaban vs. VKA	Apixaban vs. VKA	Dabigatran vs. VKA
Sex			
Female	Ref	Ref	Ref
Male	1.05 (0.98–1.12)	1.04 (0.90–1.21)	0.88 (0.58–1.33)
Age groups			
<65	Ref	Ref	Ref
65–75	1.01 (0.92–1.10)	0.99 (0.81–1.20)	1.42 (0.83–2.39)
>75	1.00 (0.92–1.09)	1.31 (1.08–1.58)*	1.61 (0.96–1.36)
Index event			
Deep venous thrombosis	Ref	Ref	Ref
Pulmonary embolism	1.05 (0.98–1.12)	1.68 (1.44–1.95)*	1.20 (0.79–1.82)
Comorbidities			
Previous VTE	0.78 (0.71–0.86)*	0.73 (0.57–0.93)*	0.68 (0.33–1.27)
Previous bleeding	1.01 (0.90–1.13)	0.92 (0.72–1.18)	0.82 (0.37–1.58)
Alloplastic surgery	1.22 (0.97–1.54)	1.03 (0.60–1.70)	0.97 (0.16–3.23)
Chronic kidney disease	0.42 (0.34–0.50)*	0.47 (0.32–0.69)*	NA
Liver disease	0.73 (0.57–0.95)*	0.93 (0.54–1.55)	NA
Heart failure	1.26 (1.06–1.50)	0.80 (0.55–1.16)	1.03 (0.30–2.74)
Ischemic heart disease	0.87 (0.75–0.99)*	1.21 (0.91–1.59)	0.45 (0.13–1.14)
Vascular disease	0.89 (0.70–1.13)	0.72 (0.40–1.22)	1.44 (0.34–4.05)
Hypertension	0.89 (0.82–0.97)*	0.93 (0.77–1.11)	0.48 (0.26–0.83)*
Acute myocardial infarction	0.85 (0.62–1.17)	1.49 (0.77–2.29)	0.76 (0.08–5.97)
Cancer	0.74 (0.67–0.82)*	0.76 (0.60–0.94)*	0.92 (0.50–1.60)
Diabetes mellitus	1.00 (0.88–1.14)	0.95 (0.71–1.24)	0.94 (0.39–1.97)
Stroke	0.86 (0.75–0.99)*	1.19 (0.90–1.56)	1.30 (0.57–2.61)
COPD	0.88 (0.78–0.99)*	1.08 (0.84–1.37)	1.80 (0.99–3.10)
Thrombophilia	0.58 (0.42–0.78)*	0.27 (0.08–0.69)*	1.75 (0.96–3.02)
Year (with 1 year increments)	2.21 (2.15–2.27)*	4.49 (4.14–4.89)*	2.76 (2.30–3.35)*

Table 2. Factors associated with initiation of rivaroxaban, apixaban, or dabigatran, vs. VKA in patients with VTE. Odds ratio below 1 indicates in favor of VKA and above 1 in favor of rivaroxaban, apixaban or dabigatran. *Indicates significance.

a NOAC is likely explained by the perception from physicians that NOACs are not recommended in this patient group. Concerns have been raised about a possible increased risk of bleeding in patients with chronic kidney disease and liver failure, because of the pharmacokinetic profile of NOACs, which are contraindicated in patients with severe kidney disease (eGFR < 15 ml/min)^{5–7,9,13}. The results from this study are in accordance with The American College of Chest Physician new guidelines from 2016, recommending initiation of a NOAC over VKA in patients without cancer, renal impairment, and liver disease¹⁰. The most recent guidelines from the European Society of Cardiology from 2014 do not differentiate between the choice of NOACs or VKA^{11,18}.

Interestingly, patients with indication for prolonged treatment, such as patients with previous VTE and thrombophilia were more likely to be initiated on a VKA compared with one of the NOACs^{10,11}. Even though the safety and efficacy of extended treatment with NOACs have been examined in randomized controlled trials, only dabigatran was directly compared with VKA in the REMEDY trial (Extended use of dabigatran, warfarin, or placebo in venous thromboembolism)¹⁹, while rivaroxaban and apixaban were compared with placebo in the EINSTEIN-EXT and AMPLIFY-EXT (Apixaban for extended treatment of venous thromboembolism)^{5,20}. As a result of this, Danish guidelines suggest that VKA should be used for extended treatment instead of NOACs. This also emphasizes the need for comparative safety and effectiveness studies to establish the risk-benefit profile of rivaroxaban and apixaban compared with VKA for extended treatment²¹.

The primary strength of this study is inherent in the use of the Danish nationwide registries, which have been associated with high internal validity, as the registration of diagnoses is considered reliable^{22–24}. Several diagnoses have been validated through the registries, and relevant to this study the diagnosis of VTE has been associated with a positive predictive value between 75% and 90%^{25,26}. Another benefit is that the registries allow for the inclusion of all Danish residents and provide complete information regardless of socioeconomic status, geography, or participation in a health care insurance program, which increases the generalizability of results. Denmark has a reimbursement system for drugs, and therefore it is uncertain if the results from this study are representative for other countries. Despite the reimbursement system, NOACs still have a higher acquisition cost for the patient than VKA in Denmark, which is approximately three times higher for NOACs than for VKA. Unfortunately, we

do not have information on socioeconomic or sociodemographic status in the utilized databases, which potentially are important factors for the initiation of a NOAC vs. VKA. Furthermore, there is a lack of important clinical variables that are not readily available through the registries, which includes: International normalized ratio, body mass index, smoking status, hepatic status, kidney function, and blood pressure. Since edoxaban was approved in Denmark subsequent to the study period, it was not possible to include this drug in the study.

In conclusion the initiation of NOACs, driven by rivaroxaban and apixaban, is increasing in patients with VTE, whereas the initiation of VKA is decreasing. By September 2016 12%, 70%, 16%, and 2% were initiated on VKA, rivaroxaban, apixaban, and dabigatran. Patients with previous VTE, chronic kidney disease, liver disease, cancer, and thrombophilia were significantly more likely to be initiated on VKAs compared with rivaroxaban or apixaban.

Methods

Data sources. In this Danish nationwide study data from three different registers were included: The Danish National Prescription Registry, the Danish National Patient Register, and The Danish Civil Registration System. All Danish residents are provided with a unique civil registration number, which enables individual-level linkage between the registries^{22,27}. The Danish Civil Registration System provides information on: vital status, gender, date of birth, and date of emigration and immigration²⁷. The Danish National Patient Register provides information on all hospital admissions (in-patient and out-patient). Patients are registered with a primary diagnosis, being the primary reason for admission, and if necessary one or more secondary diagnoses. All hospital diagnoses in the register are classified according to the International Classification of Diseases, 10th revision (ICD-10). All surgical procedures are registered according to the Nordic Classification of Surgical Procedures (NCPS)²³. The Danish Registry of Medicinal Product Statistics provides information on all prescribed drugs redeemed at all Danish pharmacies, and includes information on strength, dosage, and date of redemption. All drugs are classified according to the Anatomical Therapeutic Chemical (ATC) classification system²².

Study population. All patients diagnosed with VTE (in-patients and out-patients, primary and secondary diagnoses) in the period 6th of February 2012 to 30th of September 2016 were identified. Patients were included if they had redeemed a prescription of rivaroxaban, dabigatran, apixaban, or VKA 7 days prior or 7 days after the date of discharge with a VTE or date of diagnosis from an out-patient clinic, as has been performed previously²⁸. Patients treated with VKA or rivaroxaban were included from the 6th of February 2012, which was the date of approval of rivaroxaban. Patients treated with dabigatran or apixaban were included if they had redeemed a prescription after the 6th of June 2014 or 31st of July 2014, respectively, which were the dates of approval for these two drugs. Patients under 15 and over 100 years of age, and patients with atrial fibrillation were excluded. Furthermore, patients with mechanical heart valves were excluded.

Comorbidities and concomitant medication. Comorbidities of interest were identified from the Danish National Patient Registry using ICD-10 diagnosis codes (Supplementary Tables 1 and 2). Comorbidities were registered within 10 years of a diagnosis with VTE. Baseline pharmacotherapy was identified through the Danish Registry of Medicinal Product Statistics using ATC-codes (Supplementary Tables 1 and 2). Redeemed prescriptions were identified within 180 days prior to the VTE diagnosis.

Statistical analyses. Patient characteristics were presented as frequencies with percentages and as medians with interquartile ranges (IQR). Differences in baseline characteristics of included patients were investigated using the Chi-square test for discrete variables and Kruskal-Wallis rank sum test for continuous variables. Initiation of treatment with VKA rivaroxaban, apixaban, or dabigatran was plotted each month as the percentage of patients treated divided by the total number of patients initiating treatment. The temporal trends in initiation of rivaroxaban, apixaban, dabigatran and VKAs were investigated using the Cochran-Armitage test for trend. Multivariable logistic regression modeling, adjusted for calendar year, was used to investigate factors associated with the initiation of treatment with rivaroxaban, apixaban, and dabigatran vs. VKA. All statistical analyses were performed at a 0.05 significance level. Data management and statistical analysis were performed using SAS (Statistical Analytical System, version 9.4, SAS Institute, Gary, NC.) and R²⁹.

Ethics. Retrospective registry-based studies do not require approval from the Research Ethics Committee System. The Danish Data Protection Agency had approved use of data for this study (ref. no: 2007-58-0015/GEH-2014-012 I-Suite no: 02720).

References

1. Bauer, K. A. Pros and cons of new oral anticoagulants. *Hematology Am Soc Hematol Educ Program* **2013**, 464–470 (2013).
2. Mega, J. L. & Simon, T. Pharmacology of antithrombotic drugs: an assessment of oral antiplatelet and anticoagulant treatments. *Lancet* **386**, 281–291 (2015).
3. Goldhaber, S. Z. & Bounameaux, H. Pulmonary embolism and deep vein thrombosis. *Lancet* **379**, 1835–1846 (2012).
4. Wells, P. S., Forgie, M. A. & Rodger, M. A. Treatment of venous thromboembolism. *Jama* **311**, 717–728 (2014).
5. Bauersachs, R. *et al.* Oral rivaroxaban for symptomatic venous thromboembolism. *N Engl J Med* **363**, 2499–2510 (2010).
6. Buller, H. R. *et al.* Oral rivaroxaban for the treatment of symptomatic pulmonary embolism. *N Engl J Med* **366**, 1287–1297 (2012).
7. Schulman, S. *et al.* Dabigatran versus warfarin in the treatment of acute venous thromboembolism. *N Engl J Med* **361**, 2342–2352 (2009).
8. Agnelli, G. *et al.* Oral apixaban for the treatment of acute venous thromboembolism. *N Engl J Med* **369**, 799–808 (2013).
9. Schulman, S. *et al.* Treatment of acute venous thromboembolism with dabigatran or warfarin and pooled analysis. *Circulation* **129**, 764–772 (2014).
10. Kearon, C. *et al.* Antithrombotic therapy for vte disease: Chest guideline and expert panel report. *Chest* **149**, 315–352 (2016).

11. Konstantinides, S. *et al.* 2014 ESC Guidelines on the diagnosis and management of acute pulmonary embolism. *The Task Force for the Diagnosis and Management of Acute Pulmonary Embolism of the European Society of Cardiology (ESC) Endorsed by the European Respiratory Society (ERS)* (2014).
12. Badreldin, H., Nichols, H., Rimsans, J. & Carter, D. Evaluation of anticoagulation selection for acute venous thromboembolism. *J Thromb Thrombolysis* (2016).
13. Cohen, A. T., Imfeld, S. & Rider, T. Phase III trials of new oral anticoagulants in the acute treatment and secondary prevention of VTE: comparison and critique of study methodology and results. *Adv Ther* **31**, 473–493 (2014).
14. Prandoni, P. *et al.* Use of prestudy heparin did not influence the efficacy and safety of rivaroxaban in patients treated for symptomatic venous thromboembolism in the EINSTEIN DVT and EINSTEIN PE studies. *Acad Emerg Med* **22**, 142–149 (2015).
15. Louzada, M. L., Majeed, H., Dao, V. & Wells, P. S. Risk of recurrent venous thromboembolism according to malignancy characteristics in patients with cancer-associated thrombosis: a systematic review of observational and intervention studies. *Blood Coagul Fibrinolysis* **22**, 86–91 (2011).
16. Sorensen, H. T., Mellemkjaer, L., Olsen, J. H. & Baron, J. A. Prognosis of cancers associated with venous thromboembolism. *N Engl J Med* **343**, 1846–1850 (2000).
17. Agnelli, G. *et al.* A prospective study on survival in cancer patients with and without venous thromboembolism. *Intern Emerg Med* **9**, 559–567 (2014).
18. Kirchhof, P. *et al.* 2016 ESC Guidelines for the management of atrial fibrillation developed in collaboration with EACTS. *European Heart Journal* **37**, 2893–2962 (2016).
19. Schulman, S. *et al.* Extended use of dabigatran, warfarin, or placebo in venous thromboembolism. *N Engl J Med* **368**, 709–718 (2013).
20. Agnelli, G. *et al.* Apixaban for extended treatment of venous thromboembolism. *N Engl J Med* **368**, 699–708 (2013).
21. Sindet-Pedersen, C., Pallisgaard, J. L., Olesen, J. B., Gislason, G. H. & Arevalo, L. C. Safety and efficacy of direct oral anticoagulants compared to warfarin for extended treatment of venous thromboembolism - a systematic review and meta-analysis. *Thromb Res* (2015).
22. Kildemoes, H. W., Sorensen, H. T. & Hallas, J. The Danish National Prescription Registry. *Scand J Public Health* **39**, 38–41 (2011).
23. Lyngge, E., Sandegaard, J. L. & Rebolj, M. The Danish National Patient Register. *Scand J Public Health* **39**, 30–33 (2011).
24. Thygesen, L. C. & Ersboll, A. K. When the entire population is the sample: strengths and limitations in register-based epidemiology. *Eur J Epidemiol* **29**, 551–558 (2014).
25. Severinsen, M. T. *et al.* Venous thromboembolism discharge diagnoses in the Danish National Patient Registry should be used with caution. *J Clin Epidemiol* **63**, 223–228 (2010).
26. Sundboll, J. *et al.* Positive predictive value of cardiovascular diagnoses in the Danish National Patient Registry: a validation study. *BMJ Open* **6**, e012832 (2016).
27. Pedersen, C. B. The Danish Civil Registration System. *Scand J Public Health* **39**, 22–25 (2011).
28. Sindet-Pedersen, C. *et al.* Comparative safety and effectiveness of rivaroxaban versus VKAs in patients with venous thromboembolism. A Danish nationwide registry-based study. *Thromb Haemost* (2017).
29. R Core Team R: A language and environment for statistical computing. R Foundation for Statistical Computing, Vienna, Austria. <http://www.R-project.org/> (2016).

Author Contributions

All authors contributed substantially to the conception and design, acquisition of data, or analysis and interpretation of data. C.S.P. drafted the article and J.L.P., L.S., M.L., J.B., C.T.P., G.G. and J.B.O. revised it critically for important intellectual content. All authors gave final approval of the version to be published.

Additional Information

Supplementary information accompanies this paper at doi:10.1038/s41598-017-03596-x

Competing Interests: The Danish council of independent research supported this study (No.: 4183-00008).

G.G. is supported by an unrestricted clinical research scholarship from the Novo Nordisk Foundation. The funder had no influence on the study design, interpretation of results, or the decision to submit the manuscript for publication. L.S. has received funding for research from Boehringer Ingelheim. J.L.P.: has received funding for research from Boehringer Ingelheim and Bayer. C.T.P.: declares research contracts with Bayer and Biotronic and speaker fees for Bayer and BMS. G.G.: has received funding for research from Boehringer Ingelheim, Pfizer, BMS, AstraZeneca and Bayer and declares ownership of stocks in Lundbeck A/S, Novo Nordisk A/S and ALK Abello pharmaceuticals. J.B.O.: has received speaker fees from Bristol-Myers Squibb, Boehringer Ingelheim, Bayer, and AstraZeneca, previous funding for research from the Lundbeck Foundation, and current funding for research from the Bristol-Myers Squibb and The Capital Region of Denmark, Foundation for Health Research. M.L. has received speaker fees from Bristol-Meyer Squibb and Bayer. J.B.: Research support from Astra Zeneca and Consultant for Merck, Astra Zeneca, and Janssen.

Publisher's note: Springer Nature remains neutral with regard to jurisdictional claims in published maps and institutional affiliations.



Open Access This article is licensed under a Creative Commons Attribution 4.0 International License, which permits use, sharing, adaptation, distribution and reproduction in any medium or format, as long as you give appropriate credit to the original author(s) and the source, provide a link to the Creative Commons license, and indicate if changes were made. The images or other third party material in this article are included in the article's Creative Commons license, unless indicated otherwise in a credit line to the material. If material is not included in the article's Creative Commons license and your intended use is not permitted by statutory regulation or exceeds the permitted use, you will need to obtain permission directly from the copyright holder. To view a copy of this license, visit <http://creativecommons.org/licenses/by/4.0/>.

© The Author(s) 2017