

Investigating dose–response effects of multimodal exercise programs on health-related quality of life in older adults

This article was published in the following Dove Press journal:
Clinical Interventions in Aging

Navin Kaushal^{1,2}
Francis Langlois³
Laurence
Desjardins-Crépeau^{1,2,4}
Martin S Hagger^{5,6}
Louis Bherer^{1,2,4}

¹Department of Medicine, University of Montreal, Montreal, Quebec, Canada; ²Research Center, Montreal Heart Institute, Montreal, Quebec, Canada; ³CIUSSS de l'Estrie, Centre Hospitalier Universitaire de Sherbrooke, Montreal, Quebec, Canada; ⁴Research Center, Geriatrics Institute, University of Montreal, Montreal, Quebec, Canada; ⁵School of Psychology and Speech Pathology, Faculty of Health Sciences, Curtin University, Perth, WA, Australia; ⁶Faculty of Sport and Health Sciences, University of Jyväskylä, Jyväskylä, Finland

Background: Older adults are at risk of multiple chronic diseases, most of which could be prevented by engaging in regular physical activity. Frailty is a state of increased vulnerability to diseases. Worsening symptoms of frailty, such as decrease in physical functionality, can compromise health-related quality of life (HR-QOL). Previous findings suggest that frailty moderates the relationship between physical activity and HR-QOL, yet intervention findings are limited, particularly in dose–response analyses. Hence, this study was conducted to test if lower-dose physical activity (120 minutes/week) would provide the same benefits in health outcomes (physical functionality and HR-QOL) as higher-dose physical activity (180 minutes/week).

Methods: Participants (n=110) were older adults comprising higher-dose, lower-dose, and control groups who were combined from recent randomized controlled trials. Experimental groups participated in a multimodal exercise program in a supervised laboratory setting for 12 weeks.

Results: The higher-dose group showed a significant improvement in physical functionality ($\beta=0.23, P=0.03$) and in overall HR-QOL ($\beta=0.44, P=0.001$) including its subcategories over the control group. A group \times frailty interaction revealed that frail individuals significantly improved in capacity HR-QOL when they exercised at a higher dose ($F(1, 49)=4.57, P=0.038$).

Conclusion: This study identifies a positive, predictive relationship between exercise duration and health outcomes (HR-QOL dimensions and frailty) among older adults. Frail individuals in the higher-dose group demonstrated significant recovery of capacity HR-QOL, thus reflecting improvement in their daily activities.

Keywords: physical activity, aging, multimodal exercise, frailty

Background

Older adults (age 65+) carry the highest risk for several chronic illnesses and conditions such as cancer, heart disease, cognitive impairments, and dementia.¹ Although health can be improved via a variety of behavior modifications, exercising regularly is considered to be one of the most effective preventive measures. Engaging in regular exercise functions as a robust primary and secondary preventive measure against multiple chronic illnesses including cardiovascular disease, cancer, and diabetes.^{2,3} Exercising regularly has also demonstrated various improvement in health outcomes among older adults such as cognitive function, symptoms of depression, and reduction in anxiety.⁴

Health outcomes: health-related quality of life, physical functionality, and frailty

In addition to the cumulative benefits of exercise in reducing the risk of chronic diseases and improving psychological outcomes in older adults, research has also demonstrated

Correspondence: Navin Kaushal
Research Centre, Montreal Heart
Institute, R2450, 5000 Rue Bélanger,
Montreal, QC H1T 1C8, Canada
Tel +1 514 376 3330
Email n.kaushal@umontreal.ca

that exercising regularly enhances psychological well-being and health-related quality of life (HR-QOL).⁵ HR-QOL is the perceived physical and mental health perceptions such as energy level and mood.⁶ Changes in this construct could signify improvement or worsening of illness and illness-related debilitating symptoms. Exercise has been shown to be a positive predictor of HR-QOL in the general population,^{7,8} and specifically in older adults.^{9,10}

Physical functionality, the capacity to perform physical tasks, is a relevant construct that should be assessed in older adults.¹¹ It is correlated with HR-QOL and has also been shown to be positively predicted by participation in regular exercise.⁹ Although widely assessed as an independent outcome, physical functionality has also been included as a proxy measure to assess frailty.^{12–14} Frailty is a clinically recognizable state of increased vulnerability to illnesses or disability caused by an age-associated decline in bodily reserve and functionality.¹⁵ Relevant criteria to assess frailty have been widely debated in the literature as there is a lack of consensus on its specific components.^{16,17} Frailty is a predictor of HR-QOL,¹⁸ and the literature on exercise has shown that frail individuals demonstrate improved symptoms of diseases and scores of HR-QOL when exercising regularly.¹⁹

Dose–response findings

Investigating dose effects of exercise on HR-QOL and physical functionality in older adults is considered important to identify minimum levels of exercise required for effective interventions and may provide evidence to inform exercise guidelines in this population. While differences in dose could imply variation in the level of intensity or duration, national guidelines recommend exercise for a duration of 150 minutes/week at a moderate-to-vigorous level for healthy older adults.^{2,20} Using these guidelines as the recommended dose, we propose that a higher and lower dose could be compared at 20% of time (30 minutes) above and below the mark of 150 minutes/week, thus resulting in 120 minutes and 180 minutes/week at the same moderate-to-vigorous intensity as lower and higher doses, respectively. The purpose of this comparison cutoff was to test if falling below the recommended dose would still yield significant benefits compared with a control condition and if the extra efforts to go beyond the recommended dose would provide greater benefits. Reviews support evidence that physical functionality improves with regular participation in physical activity, with participation in a multicomponent training program (eg, aerobics combined with weight training workouts) providing the best results.^{19,21} However, research on the dose effect of

exercise on functioning has not yielded conclusive results. Recent systematic reviews have shown some efficacy for low-dose interventions, while other studies have found no effect on improving physical functionality.^{19,21} Similarly, while there are consistent findings showing improvement in HR-QOL when exercising as per national guidelines,^{22,23} there is limited research testing the effects on HR-QOL at higher doses^{23,24} and very little research on the effects at lower doses.

There currently appears to be some support for exercising 300 minutes/week both for physical functionality outcomes²⁵ and HR-QOL.²³ This level of exercise equates to nearly double the recommended level of physical activity for older adults according to national guidelines.² Albeit there are observed health benefits, prescribing 300 minutes/week is significantly demanding for older adults, even in a clinically prescribed protocol. Since reviews demonstrate improvements in frailty and HR-QOL at lower levels of exercise,¹⁸ by comparison, an exploration of the minimum level of exercise required to produce meaningful changes in these outcomes is warranted. To date, no studies have tested the change in these constructs with levels of exercise that are slightly above and below the guideline levels. Identifying effects on adaptive outcomes at lower levels of exercise could serve as an incentive for older adults as it represents a more realistic exercise goal. Two recent randomized controlled trials (RCTs) primarily designed to determine the effects of 12-week exercise interventions on cognitive functioning in older adults administered the same battery of assessments including physical functionality and HR-QOL scales.^{24,26} Langlois et al²⁴ found a significant improvement in HR-QOL components in favor of the experimental group, which was prescribed to exercise 180 minutes/week, over the control group. The exercise-only arm from Desjardins-Crépeau et al²⁶ mirrored that of Langlois et al,²⁴ but participants exercised for 120 minutes/week; however, this trial did not evaluate between-group differences in physical functionality and did not analyze HR-QOL data. The exercise arms of the two trials along with a control arm were combined in the present study with the aim of comparing the levels of prescribed exercise doses (0, 120, and 180 minutes) and their effects on HR-QOL and physical functionality.

The purpose of this study was to investigate the dose effects of exercise on HR-QOL and physical functionality in a sample of older adults. The primary objective was to test the relative change in the older adults' HR-QOL at different levels of prescribed exercise duration. We hypothesized that participants prescribed to a higher exercise dose (180 minutes/week) would report significantly higher HR-QOL over the control group and the lower-dose group (prescribed 120 minutes/week) would not show significant improvement over indi-

viduals who did not receive any exercise prescription (control arm). The secondary objective was to test if higher and lower doses would differ in yielding improvements in physical functionality compared with the control condition. It was also hypothesized that improvements in physical functionality would correspond with the dose shown to improve HR-QOL. The final objective was to test if frailty would moderate the relationship between exercise dose and HR-QOL outcomes. Based on the previous findings, it was hypothesized that those who are frail would significantly benefit from greater exercise dose, which in turn would improve their HR-QOL.

Methods

Study design and participants

This study reports the secondary analysis of data from two recently published RCTs.^{24,26} The recruitment criteria for both studies were identical. Sedentary, community-dwelling healthy older adults (age 65+) from a large metropolitan city were recruited via public advertisements (flyers and newspapers). Participants were screened for signs of dementia

(score <25 on the Mini-Mental State Examination)²⁷ or depression (score >10 on the Geriatric Depression Scale),²⁸ in addition to demonstrating any physical limitations of exercising. Finally, all potential participants were required to clear the Physical Activity and Readiness Questionnaire.²⁹ The control group (n=36), which was taken from Langlois et al's study,¹² was instructed to only complete the baseline and follow-up measures. The intervention group from Langlois et al's study¹² (n=36) was instructed to engage in an exercise program for 180 minutes/week (1-hour session for 3 days). Desjardins-Crépeau et al²⁶ performed a multiple-arm trial in which two of the arms (total: n=38) undertook a multi-component exercise program identical to Langlois et al's¹² intervention group with the exception that participants exercised for 120 minutes/week. Combining these samples yielded a total of 110 participants for analyses. The flowchart of both the RCTs, which identifies the groups selected for the present study, is shown in Figure 1. Both intervention groups exercised in the same laboratory setting and were supervised by a kinesiologist to ensure safety and control

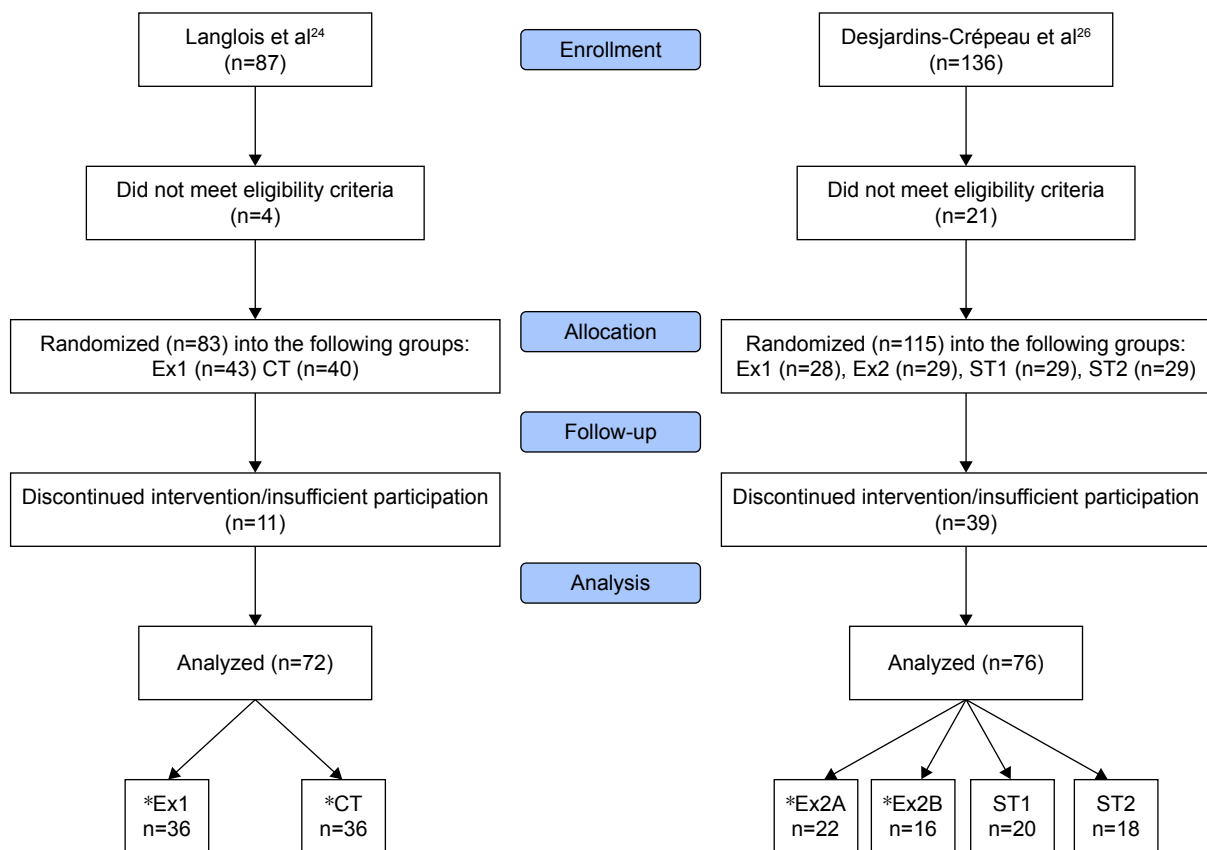


Figure 1 CONSORT flow diagram of group selection.

Notes: The flowchart presents selection of groups for the present study. CT represents control group, which did not receive any exercise prescription, Ex1 represents higher-dose group, which exercised for 180 minutes/week, and Ex2A and Ex2B represent lower-dose groups, which exercised for 120 minutes/week. Groups Ex2A and Ex2B were combined to create the lower-dose group. The letters "A" and "B" signify different computer tests administered to these groups; however, the outcomes were not relevant in the present study. Groups ST1 and ST2 were stretching interventions that were not used in the study. Asterisks (*) denote groups that were included in the analysis. Reprinted by permission from Springer Nature: *Int J Behav Med*. Kaushal N, Desjardins-Crépeau L, Langlois F, Bherer L. The effects of multi-component exercise training on cognitive functioning and health-related quality of life in older adults. Copyright 2018.45.

for objective measurement of exercise time. The intervention groups undertook a multicomponent exercise session, which included aerobics (treadmill) and resistance/strength training (resistance cables). The lower- and higher-dose groups were prescribed with two and three exercise sessions/week, respectively. The protocol was built on recommendations from the literature for older adults, which included administering a multicomponent intervention^{19,21} that is delivered at an individual level.¹⁸ Both studies were conducted in accordance with the Declaration of Helsinki and were ethically approved by the Research Center of the Institut Universitaire de Geriatrie de Montreal. Written informed consent was obtained from all individual participants included in the study.

Measures

Participants completed all of the following measures at baseline. Physical functionality and HR-QOL were also assessed at week 12.

Physical functionality

The modified Physical Performance Test³⁰ was used to assess the level of physical functionality.³⁰ This test is used for comprehensive fitness assessment that includes nine tasks rated from 0 to 4 points, with a maximum score of 36. Some of these tasks include 15-minute speed walk, picking up a coin from the floor, and standing up from a chair (five times). This test also included non-timed tasks such as performing a 360° turn and climbing up and down four flights of stairs.

Frailty

Frailty has been proposed with multiple definitions, and there is a lack of agreement on how this construct should be assessed.^{16,17} Hence, to maximize the content validity of the measures in the current study, multiple assessments were employed based on previous definitions to identify a participant as frail. This included: 1) administering Fried et al's criteria,³¹ which define frail as possessing any three of five frailty symptoms (muscular weakness, slow walking speed, fatigability, sedentary lifestyle, and unintentional weight loss); 2) having a score $\leq 28/36$ on the modified Physical Performance Test;³⁰ and 3) assessing frailty index.³² Participants were categorized as frail if they met at least two of the three criteria at the time of enrollment.

Health-related quality of life

The Quality of Life Systemic Inventory is a validated measure that assesses 28 dimensions of QOL.³³ Assessment procedure required participants to identify their current perceived level

of each HR-QOL component followed by their ideal score on a 1–10 scale. The score discrepancy was recorded for each component. The scale possess strong test–retest reliability of 0.88, and its subscales demonstrated convergent validity with their counterpart measures³³ such as the Beck Depression Inventory,³⁴ the State-Trait Anxiety Inventory,³⁵ and the Self-efficacy Scale by Sherer et al.³⁶ However, only the HR-QOL subscale was used for the present study, which comprised leisure, physical capacity, and physical health components. The leisure component represented the ability to engage in a hobby or recreation activity without the interference of health-related symptoms. Physical capacity was defined as the ability of an individual to perform everyday tasks, and physical health reflected the experience of illness/disease symptoms in a resting state. Since all HR-QOL components were assessed and calculated on the same evaluation scale (out of 10 points), the total for each component was averaged to create an aggregated HR-QOL score.

Statistical methods

A power analysis using G Power 3.1 revealed that 99 participants would be necessary to detect a small effect size (F^2 of 0.15) as significant for the primary outcome in a linear multiple regression model with three groups/predictors with the alpha error probability set at 0.05 and power ($1 - \beta$ error probability) adjusted to 0.90. Thus, the present study was sufficiently powered to conduct the analyses. SPSS 24.0 was used to conduct the analyses.³⁷ Although the participant sample as whole was homogenous based on screening for physical limitation and mild cognitive impairment, between-group analyses were performed to check for significant differences in demographic variables. Despite employing the same measures to assess the dependent variables in both studies, the measurement metrics, particularly in HR-QOL, used different ratio scores. Hence, comparing baseline data would provide an inaccurate comparison, which also aligns with the CONSORT statement and supporting evidence.³⁸ Rather, any discrepancies in baseline measures were controlled by calculating change score for each dependent variable by computing z -score residuals, which is a well-documented approach.^{39–41} Raw data of the samples can be found in previous papers.^{24,26} Associations between intervention group, demographic variables, and change scores of HR-QOL dimensions were first assessed by descriptive statistics and correlations (Table 1). The primary hypothesis was tested by investigating if group type would predict change in each HR-QOL component. This was performed by a series of ordinary least squares regression models by setting group type as the independent variable and

Table 1 Bivariate correlations

Construct	1	2	3	4	5	6	7
1. Baseline. Health		0.69**	0.52**	0.47**	0.32**	0.33**	0.05
2. Baseline. Capacity			0.47**	0.53**	0.55**	0.13	0.10
3. Baseline. Leisure				0.34*	0.23*	0.38**	0.01
4. Follow-up. Health					0.57*	0.61**	-0.02
5. Follow-up. Capacity						0.44**	0.16
6. Follow-up. Leisure							-0.03
7. Frailty							

Notes: Variables from 1 to 6 denote components of health-related quality of life. * $P < 0.05$ and ** $P < 0.01$.

each residual HR-QOL score as the dependent variable. The group variables were dummy coded prior to analysis. The models included comparative tests between higher dose and control, lower dose and control, and higher dose and lower dose. The secondary hypothesis tested if each intervention group would predict change in physical functionality compared with the control. This was performed with separate regression models by regressing physical functionality on higher-dose and lower-dose groups.

We also tested our hypothesis that frailty would interact with intervention group type in the prediction of HR-QOL using hierarchical linear regression. Separate regression analyses were conducted with each HR-QOL construct at Week 12 (leisure, physical capacity, and physical health) as the dependent variable. In step 1 of the analysis, baseline HR-QOL, group (lower vs control; higher vs control), and frailty were included as independent predictors. In step 2, we included a mean-centered group \times frailty interaction term as an additional predictor. Significant interaction effects were further investigated using simple slope analyses by segregating the sample into separate groups on the frailty variable (frail and non-frail) and calculating slopes representing the effect of exercise group on HR-QOL in each. Since the raw

scores and z-score have been previously published for each group,^{24,26} the present study reports only effect sizes and standardized residuals.

Results

Participant characteristics

All groups were homogenous in age ($F(2, 102) = 0.14$, $P = 0.871$), sex ($\chi^2 = 1.43$, $df = 2$, $P = 0.488$), and frailty ($\chi^2 = 1.75$, $df = 2$, $P = 0.418$) at baseline. The age of the sample ranged from 65 to 91 years, and the mean age (SD) of the control, lower-dose, and higher-dose groups was 73.06 (SD=5.57), 71.11 (SD=6.95), and 71.44 (SD=6.81) years, respectively. Bivariate matrix (Table 1) showed that all HR-QOL variables correlated with their corresponding construct at Week 12. Each HR-QOL construct also correlated with other subcomponents at the same measurement time.

Hypothesis testing

Hierarchical linear regression analyses revealed that exercise group type predicted HR-QOL dimensions (Table 2). The lower dose vs control group variable was not found to significantly predict leisure ($\beta = 0.11$, $P = 0.371$), capacity ($\beta = 0.13$, $P = 0.265$), physical health ($\beta = 0.21$, $P = 0.077$),

Table 2 Results of multiple linear regression models

Independent variable/model	Dependent variable	β	SE	t	P-value
Group (high vs control)	HR-QOL health	0.25	0.93	2.10	0.039
	HR-QOL capacity	0.29	0.22	2.55	0.013
	HR-QOL leisure	0.34	0.18	2.96	0.004
	HR-QOL total	0.44	0.38	4.05	0.000
Group (low vs control)	HR-QOL health	0.21	0.22	1.80	0.077
	HR-QOL capacity	0.14	0.12	1.23	0.265
	HR-QOL leisure	0.11	0.09	0.90	0.371
	HR-QOL total	0.23	0.44	1.93	0.058
Interaction ^a	HR-QOL capacity				
Group (high vs control)		0.53	0.37	2.61	0.014
Frailty		0.07	0.31	0.42	0.678
Group \times frailty		0.61	0.59	2.18	0.037

Notes: β is the standardized beta coefficient. ^a $R = 0.43$, $F(1, 33) = 4.74$, $P = 0.037$.

Abbreviations: HR-QOL, health-related quality of life; SE, standard error.

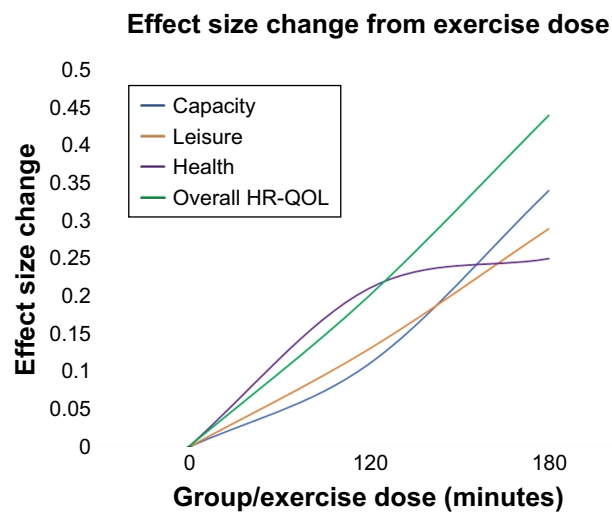


Figure 2 Relationship between exercise dose and change in HR-QOL.

Note: Effect size changes of HR-QOL outcomes when each exercise dose was compared with the control group.

Abbreviation: HR-QOL, health-related quality of life.

and overall HR-QOL ($\beta=0.23$, $P=0.058$), with R^2 values of 0.01, 0.02, 0.05, and 0.05, respectively. However, the higher dose vs control contrast found group type to show significant positive effects favoring higher doses on capacity ($\beta=0.34$, $P=0.004$), leisure ($\beta=0.29$, $P=0.013$), physical health ($\beta=0.25$, $P=0.040$), and overall HR-QOL ($\beta=0.44$, $P=0.001$) with R^2 values of 0.11, 0.09, 0.06, and 0.20, respectively (Figure 2). A group construct that compared both intervention groups predicted significant increase in capacity HR-QOL ($\beta=0.25$, $P=0.038$) with an R^2 of 0.06 in favor of the higher-dose condition. The test for the secondary hypothesis found the higher dose vs control contrast to show improvement in physical functionality ($\beta=0.31$, $P=0.011$) with an R^2 of 0.10 over the control condition; however, the lower dose did not show significant improvement over the control condition ($P>0.05$). Finally, the frailty interaction was tested in a hierarchical multiple regression model (Figure 3). The frailty interaction model predicted change in HR-QOL capacity ($F(1, 33)=4.74$, $P=0.037$). In particular, the interaction increased the R^2 from 0.06 to 0.19. Simple slope analyses revealed that group was a significant predictor in change of capacity HR-QOL among participants who were frail ($\beta=0.53$, standard error [SE] =0.37, $P=0.014$), but not for those who were non-frail ($\beta=0.17$, SE =0.46, $P=0.497$). Hence, frail individuals in the higher exercise dose condition demonstrated significant improvement in capacity HR-QOL over their non-frail counterparts.

Discussion

The primary objective of this study was to test the dose–response relationship between exercise and HR-QOL, while

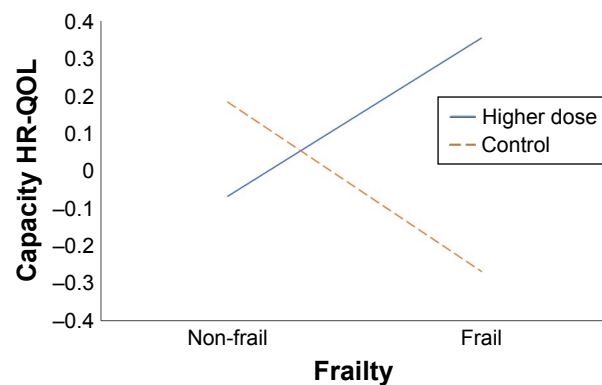


Figure 3 Exercise dose and frailty interaction.

Note: Group (higher dose vs control) interacts with frailty to predict change in capacity HR-QOL.

Abbreviation: HR-QOL, health-related quality of life.

the secondary objective was to test if exercise dose was associated with changes in a symptom of frailty (physical functionality). Finally, the tertiary objective was to test if frailty would interact between exercise dose and HR-QOL. Participating in a higher-dose exercise program was expected to be related to improvements in HR-QOL outcomes relative to lower-dose exercise programs and no exercise. Conforming to the hypothesis, the lower-dose group showed a nonsignificant improvement in HR-QOL constructs compared to the control group. However, participants in the higher-dose group demonstrated a significant improvement in each HR-QOL dimension with the change in effect size in the range of medium in magnitude.⁴² Previous studies have distinguished prescribed doses as variability in intensity levels, showing improvement in HR-QOL in favor of greater-intensity group,^{30,43,44} but the manipulation of total weekly exercise time has not been compared.

A review of exercise intervention and changes of HR-QOL concluded that evidence testing the dose–response relationship is limited, and has not identified any trials that have compared changes across different durations while controlling for the same type of exercise training.¹⁸ Hence, the present findings mark as one of the first to show a continual improvement of HR-QOL components with increased exercise dose. Converting the results into a graph provided additional novel insight that showed unique patterns of each HR-QOL subcomponent. For instance, with the exception of physical health, the remaining components did not appear to show a ceiling effect at a higher exercise dose. Overall HR-QOL and the capacity subcomponent showed a positive slope with the latter demonstrating significant improvement compared to the lower-dose group. Given that HR-QOL is a distal health outcome that is predicted from the change in physical and cognitive performance,⁴⁵ these results suggest

that participants in the higher-dose group may have benefited from improvement in various health symptoms across 12 weeks. This theorizing was further supported when testing the secondary hypothesis. The findings revealed physical functionality to show improvement corresponding to exercise dose (180 minutes/week) that predicted change in HR-QOL outcomes, though a review has identified a cluster of studies that showed significant improvement in functionality at lower exercise doses (35–120 minutes/week).¹ However, most of these interventions employed older-old adults (age 70+) and administered training programs that ranged from 6 to 12 months. The discrepancy in protocol designs creates some challenges when comparing changes in outcomes as the current findings reflect a 3-month training program for individuals over 60 years of age.

Finally, the third hypothesis investigated if frailty would moderate the effects of exercise dose on capacity HR-QOL. The results revealed that frail individuals showed significant improvement in capacity HR-QOL when they exercised at a higher dose. Specifically, the interaction was able to increase the variance from a small to a medium effect size.⁴⁶ While previous research supports frail individuals to exercise regularly,^{19,21,47,48} this is the first study to demonstrate that the improvements from multimodal exercise training translate to everyday activities as reflected from the capacity HR-QOL construct. While some support exists in the literature, the variability of sample (eg, nursing home, specific clinical populations) in addition to unclear details on prescribed exercise sessions in previous RCTs makes it a challenge to provide parallel comparisons. Overall, the present study addresses a call to investigate and test an optimal exercise program regarding frequency, type of exercise, and duration.⁴⁹ These findings are also one of the first to demonstrate that frailty interacts between exercise dose and HR-QOL with empirical data.

Strengths and limitations

A significant amount of methodological variability exists in exercise interventions for older adults, thus making it a challenge to directly compare some of our findings. The RCT groups analyzed in the present study carefully incorporated previous recommendations for conducting a robust trial for older adults, which includes the administration of multimodal exercise training for the intervention^{19,21} and employing a kinesiologist to deliver the exercise sessions.¹⁹ However, the findings should not be used as outcome markers of exercising above and below the recommended guidelines.²⁰ For instance, the guidelines recommend 150 minutes of aerobic physical activity performed at a moderate-to-vigorous level in addition

to resistance/weight training exercises, which would amount to a higher total recommended physical activity time/week.²⁰ The assessment of frailty is a well-documented challenge as it requires a careful multidimensional measurement approach to ensure a compressive reflection of this term.¹⁵ The present study addressed this by employing a geriatrician to conduct a multi-measure assessment of this construct. Despite these strengths, the study has room for refinement. For instance, a follow-up frailty assessment at Week 12 would have allowed us to conduct predictive and change analysis with this construct. Evidence has demonstrated that exercise can reverse frailty,²⁵ and it would have been exciting to test if the higher-dose group produced a significant change in this construct, given the changes found in physical functionality. Finally, since this is one of the first studies to test exercise dose–response in HR-QOL variables among a sample of older adults, further empirical tests dedicated for dose–response analyses are warranted. Although a kinesiologist supervised the participants in the present study, Chin A Paw et al¹⁹ suggested that exercising at home could be an attractive option for frail adults. Supporting this suggestion, a previous systematic review identified how exercising at home could be beneficial across all ages.⁵⁰ However, successfully transitioning older adults from exercising regularly in a laboratory to their home also requires further investigation.

Conclusion

Older adults who engaged in multimodal exercising training for 180 minutes/week demonstrated significant improvement in all HR-QOL outcomes compared with the control group and the capacity dimension compared with those exercising at 120 minutes/week. While numerous independent psychological and performance laboratory-based measures could be used, HR-QOL is a distal health outcome that reflects daily well-being, which provides a meaningful interpretation when dimensions of this construct are enhanced. Hence, the recovery in capacity HR-QOL among frail individuals reflects their improved experience when performing daily activities. In conjunction with the literature, engaging in any amount of exercise safely is beneficial for frail individuals. Overall, the results are encouraging to further investigate in a dedicated RCT that also includes the guideline dose as a reference arm to advance these findings.

Acknowledgment

The authors would like to thank all participants who took part in this study.

Disclosure

The authors report no conflicts of interest in this work.

References

- Langa KM, Levine DA. The diagnosis and management of mild cognitive impairment: a clinical review. *JAMA*. 2014;312(23):2551–2561.
- American College of Sports Medicine. *ACSM's Guidelines for Exercise Testing and Prescription*. 10 ed. Indianapolis: Wolters Kluwer; 2017.
- Garber CE, Blissmer B, Deschenes MR, et al. American College of Sports Medicine position stand. Quantity and quality of exercise for developing and maintaining cardiorespiratory, musculoskeletal, and neuromotor fitness in apparently healthy adults: guidance for prescribing exercise. *Med Sci Sports Exerc*. 2011;43(7):1334–1359.
- Bherer L, Erickson KI, Liu-Ambrose T. A review of the effects of physical activity and exercise on cognitive and brain functions in older adults. *J Aging Res*. 2013;2013:1–8.
- Penedo FJ, Dahn JR. Exercise and well-being: a review of mental and physical health benefits associated with physical activity. *Curr Opin Psychiatry*. 2005;18(2):189–193.
- CDC. Health-related quality of life. 2016. Available from: <https://www.cdc.gov/hrqol/>. Accessed August 1, 2018.
- Klavestrand J, Vingård E. The relationship between physical activity and health-related quality of life: a systematic review of current evidence. *Scand J Med Sci Sports*. 2009;19(3):300.
- Kallings LV, Leijon M, Hellénus ML, Ståhle A. Physical activity on prescription in primary health care: a follow-up of physical activity level and quality of life. *Scand J Med Sci Sports*. 2008;18(2):154–161.
- Vagetti GC, Barbosa Filho VC, Moreira NB, Oliveira V, Mazzardo O, Campos W. Association between physical activity and quality of life in the elderly: a systematic review, 2000–2012. *Braz J Psychiatr*. 2014;36(1):76–88.
- Vallance JK, Eurich DT, Lavallee CM, Johnson ST. Physical activity and health-related quality of life among older men: an examination of current physical activity recommendations. *Prev Med*. 2012;54(3–4):234–236.
- Chodzko-Zajko WJ, Proctor DN, Fiatarone Singh MA, et al. Exercise and physical activity for older adults. *Medicine and Science in Sports & Exercise*. 2009;41(7):1510–1530.
- Langlois F, Vu TT, Kergoat MJ, Chassé K, Dupuis G, Bherer L. The multiple dimensions of frailty: physical capacity, cognition, and quality of life. *Int Psychogeriatr*. 2012;24(9):1429–1436.
- Bagshaw SM, Stelfox HT, Johnson JA, et al. Long-term association between frailty and health-related quality of life among survivors of critical illness: a prospective multicenter cohort study. *Crit Care Med*. 2015;43(5):973–982.
- Chang YW, Chen WL, Lin FG, et al. Frailty and its impact on health-related quality of life: a cross-sectional study on elder community-dwelling preventive health service users. *PLoS One*. 2012;7(5):e38079.
- Xue QL. The frailty syndrome: definition and natural history. *Clin Geriatr Med*. 2011;27(1):1–15.
- Rodríguez-Mañas L, Féart C, Mann G, et al. Searching for an operational definition of frailty: a Delphi method based consensus statement: the frailty operative definition-consensus conference project. *J Gerontol A Biol Sci Med Sci*. 2013;68(1):62–67.
- Bergman H, Ferrucci L, Guralnik J. Frailty: an emerging research and clinical paradigm-issues and controversies. *J Gerontol A Biol Sci Med Sci*. 2007;62(7):731–737.
- de Vries NM, van Ravensberg CD, Hobbelen JS, Olde Rikkert MG, Staal JB, Nijhuis-van der Sanden MW. Effects of physical exercise therapy on mobility, physical functioning, physical activity and quality of life in community-dwelling older adults with impaired mobility, physical disability and/or multi-morbidity: a meta-analysis. *Ageing Res Rev*. 2012;11(1):136–149.
- Chin A Paw MJ, van Uffelen JG, Riphagen I, van Mechelen W. The functional effects of physical exercise training in frail older people: a systematic review. *Sports Med*. 2008;38(9):781–793.
- CSEP. *Canadian Society for Exercise Physiology. Canadian Physical Activity Guidelines*. Ottawa, ON: Canadian Society for Exercise Physiology; 2011.
- Theou O, Stathokostas L, Roland KP, et al. The effectiveness of exercise interventions for the management of frailty: a systematic review. *J Aging Res*. 2011;2011:1–19.
- Olsson SJ, Börjesson M, Ekblom-Bak E, Hemmingsson E, Hellénus ML, Kallings LV. Effects of the Swedish physical activity on prescription model on health-related quality of life in overweight older adults: a randomised controlled trial. *BMC Public Health*. 2015;15(1):687.
- Vallance J, Eurich D, Gardiner P, Taylor L, Johnson S. Associations of daily pedometer steps and self-reported physical activity with health-related quality of life: results from the Alberta older adult health survey. *J Aging Health*. 2016;28(4):661–674.
- Langlois F, Vu TT, Chassé K, Dupuis G, Kergoat MJ, Bherer L. Benefits of physical exercise training on cognition and quality of life in frail older adults. *J Gerontol B Psychol Sci Soc Sci*. 2013;68(3):400–404.
- Tarazona-Santabalbina FJ, Gómez-Cabrera MC, Pérez-Ros P, et al. A multicomponent exercise intervention that reverses frailty and improves cognition, emotion, and social networking in the community-dwelling frail elderly: a randomized clinical trial. *J Am Med Dir Assoc*. 2016;17(5):426–433.
- Desjardins-Crépeau L, Berryman N, Fraser SA, et al. Effects of combined physical and cognitive training on fitness and neuropsychological outcomes in healthy older adults. *Clin Interv Aging*. 2016;11:1287–1299.
- Folstein MF, Folstein SE, Mchugh PR. “Mini-mental state”. A practical method for grading the cognitive state of patients for the clinician. *J Psychiatr Res*. 1975;12(3):189.
- Yesavage JA, Brink TL, Rose TL, et al. Development and validation of a geriatric depression screening scale: a preliminary report. *J Psychiatr Res*. 1982;17(1):37–49.
- Warburton DER, Bredin, Jamnik G, Gledhill N. Validation of the PAR-Q+ and ePARmed-X+. *Health & Fitness Journal of Canada*. 2011;4:38–46.
- Binder EF, Schechtman KB, Ehsani AA, et al. Effects of exercise training on frailty in community-dwelling older adults: results of a randomized, controlled trial. *J Am Geriatr Soc*. 2002;50(12):1921–1928.
- Fried LP, Tangen CM, Walston J, et al; Cardiovascular Health Study Collaborative Research Group. Frailty in older adults: evidence for a phenotype. *J Gerontol A Biol Sci Med Sci*. 2001;56(3):M146–M157.
- Rockwood K, Song X, MacKnight C, et al. A global clinical measure of fitness and frailty in elderly people. *CMAJ*. 2005;173(5):489–495.
- Duquette RL, Dupuis G, Perrault J. A new approach for quality of life assessment in cardiac patients: rationale and validation of the Quality of Life Systemic Inventory. *Can J Cardiol*. 1994;10(1):106–112.
- Beck AT, Ward CH, Mendelson M, Mock J, Erbaugh J. An inventory for measuring depression. *Arch Gen Psychiatry*. 1961;4:561–571.
- Spielberger CD, Gorsuch RL, Lushene R, Vagg PR, Jacobs GA, editors. *Manual for the State-Trait Anxiety Inventory*. Palo Alto: Consulting Psychologists Press; 1983.
- Sherer M, Maddux JE, Mercandante B, Prentice-dunn S, Jacobs B, Rogers RW. The Self-efficacy Scale: Construction and validation. *Psychological Reports*. 1982;51(2):663–671.
- IBM. *IBM SPSS Statistics for Windows, Version 24.0*. Armonk, NY: IBM Corporation; 2016.
- de Boer MR, Waterlander WE, Kuijper LD, Steenhuis IH, Twisk JW. Testing for baseline differences in randomized controlled trials: an unhealthy research behavior that is hard to eradicate. *Int J Behav Nutr Phys Act*. 2015;12(1):4.
- Buffart LM, Galvão DA, Chinapaw MJ, et al. Mediators of the resistance and aerobic exercise intervention effect on physical and general health in men undergoing androgen deprivation therapy for prostate cancer. *Cancer*. 2014;120(2):294–301.
- Rogers LQ, Fogleman A, Trammell R, et al. Inflammation and psychosocial factors mediate exercise effects on sleep quality in breast cancer survivors: pilot randomized controlled trial. *Psychooncology*. 2015;24(3):302–310.
- Kaushal N, Rhodes RE, Meldrum JT, Spence JC. Mediating mechanisms in a physical activity intervention: a test of habit formation. *J Sport Exerc Psychol*. 2018;40(2):101–110.
- Cohen J. A power primer. *Psychol Bull*. 1992;112(1):155–159.

43. Helbostad JL, Sletvold O, Moe-Nilssen R. Effects of home exercises and group training on functional abilities in home-dwelling older persons with mobility and balance problems. A randomized study. *Aging Clin Exp Res*. 2004;16(2):113–121.
44. Helbostad JL, Sletvold O, Moe-Nilssen R. Home training with and without additional group training in physically frail old people living at home: effect on health-related quality of life and ambulation. *Clin Rehabil*. 2004;18(5):498–508.
45. Kaushal N, Desjardins-Crépeau L, Langlois F, Bherer L. The effects of multi-component exercise training on cognitive functioning and health-related quality of life in older adults. *Int J Behav Med*. 2018:617–625.
46. Ferguson CJ. An effect size primer: a guide for clinicians and researchers. *Prof Psychol*. 2009;40(5):532–538.
47. Cadore EL, Rodríguez-Mañas L, Sinclair A, Izquierdo M. Effects of different exercise interventions on risk of falls, gait ability, and balance in physically frail older adults: a systematic review. *Rejuvenation Res*. 2013;16(2):105–114.
48. de Vries NM, van Ravensberg CD, Hobbelen JS, Olde Rikkert MG, Staal JB, Nijhuis-van der Sanden MW. Effects of physical exercise therapy on mobility, physical functioning, physical activity and quality of life in community-dwelling older adults with impaired mobility, physical disability and/or multi-morbidity: a meta-analysis. *Ageing Res Rev*. 2012;11(1):136–149.
49. Freiburger E, Kemmler W, Siegrist M, Sieber C. Frailty and exercise interventions: evidence and barriers for exercise programs. *Z Gerontol Geriatr*. 2016;49(7):606–611.
50. Kaushal N, Rhodes RE. The home physical environment and its relationship with physical activity and sedentary behavior: a systematic review. *Prev Med*. 2014;67:221–237.

Clinical Interventions in Aging

Publish your work in this journal

Clinical Interventions in Aging is an international, peer-reviewed journal focusing on evidence-based reports on the value or lack thereof of treatments intended to prevent or delay the onset of maladaptive correlates of aging in human beings. This journal is indexed on PubMed Central, MedLine,

CAS, Scopus and the Elsevier Bibliographic databases. The manuscript management system is completely online and includes a very quick and fair peer-review system, which is all easy to use. Visit <http://www.dovepress.com/testimonials.php> to read real quotes from published authors.

Submit your manuscript here: <http://www.dovepress.com/clinical-interventions-in-aging-journal>

Dovepress