

Research article

Open Access

Influence of acute pancreatitis on the in vitro responsiveness of rat mesenteric and pulmonary arteries

Enilton A Camargo¹, Maria Andréia Delbin², Tatiane Ferreira¹, Elen CT Landucci¹, Edson Antunes¹ and Angelina ZanESCO*²

Address: ¹Department of Pharmacology, Faculty of Medical Sciences, P.O. Box 6111, State University of Campinas (UNICAMP), Campinas (SP), Brazil and ²Department of Physical Education, Institute of Biosciences, University of São Paulo State (UNESP), Rio Claro (SP), Brazil

Email: Enilton A Camargo - enicamargo@yahoo.com.br; Maria Andréia Delbin - nadelbin@hotmail.com; Tatiane Ferreira - tatinha_fer@hotmail.com; Elen CT Landucci - elanducci@terra.com.br; Edson Antunes - edson.antunes@uol.com.br; Angelina ZanESCO* - azanESCO@rc.unesp.br

* Corresponding author

Published: 29 May 2008

Received: 27 November 2007

BMC Gastroenterology 2008, 8:19 doi:10.1186/1471-230X-8-19

Accepted: 29 May 2008

This article is available from: <http://www.biomedcentral.com/1471-230X/8/19>

© 2008 Camargo et al; licensee BioMed Central Ltd.

This is an Open Access article distributed under the terms of the Creative Commons Attribution License (<http://creativecommons.org/licenses/by/2.0>), which permits unrestricted use, distribution, and reproduction in any medium, provided the original work is properly cited.

Abstract

Background: Acute pancreatitis is an inflammatory disease characterized by local tissue injury and systemic inflammatory response leading to massive nitric oxide (NO) production and haemodynamic disturbances. Therefore, the aim of this work was to evaluate the vascular reactivity of pulmonary and mesenteric artery rings from rats submitted to experimental pancreatitis.

Male Wistar rats were divided into three groups: saline (SAL); tauracholate (TAU) and phospholipase A₂ (PLA₂). Pancreatitis was induced by administration of TAU or PLA₂ from *Naja mocambique mocambique* into the common bile duct of rats, and after 4 h of duct injection the animals were sacrificed. Concentration-response curves to acetylcholine (ACh), sodium nitroprusside (SNP) and phenylephrine (PHE) in isolated mesenteric and pulmonary arteries were obtained. Potency (pEC₅₀) and maximal responses (E_{MAX}) were determined. Blood samples were collected for biochemical analysis.

Results: In mesenteric rings, the potency for ACh was significantly decreased from animals treated with TAU (about 4.2-fold) or PLA₂ (about 6.9-fold) compared to saline group without changes in the maximal responses. Neither pEC₅₀ nor E_{MAX} values for ACh were altered in pulmonary rings in any group. Similarly, the pEC₅₀ and the E_{MAX} values for SNP were not changed in both preparations in any group. The potency for PHE was significantly decreased in rat mesenteric and pulmonary rings from TAU group compared to SAL group (about 2.2- and 2.69-fold, for mesenteric and pulmonary rings, respectively). No changes were seen in the E_{MAX} for PHE. The nitrite/nitrate (NO_x) levels were markedly increased in animals submitted to acute pancreatitis as compared to SAL group, approximately 76 and 68% in TAU and PLA₂ protocol, respectively.

Conclusion: Acute pancreatitis provoked deleterious effects in endothelium-dependent relaxing response for ACh in mesenteric rings that were strongly associated with high plasma NO_x levels as consequence of intense inflammatory responses. Furthermore, the subsensitivity of contractile response to PHE in both mesenteric and pulmonary rings might be due to the complications of this pathological condition in the early stage of pancreatitis.

Background

Epidemiological studies have shown the incidence of acute pancreatitis is increasing in the Western world, varying from 5 to 80 cases per 100,000 habitants. The most common causes of acute pancreatitis include alcoholism and gallstones, and the impairment of lung function associated with vascular complications are the main causes of the mortality, particularly in the severe forms of this disease [1-4].

Acute pancreatitis is a disease characterized by activation of pancreatic enzymes, ranging from mild, self-limited type of edematous pancreatitis to severe necrotizing form. In the most severe form of the disease, it is observed tissue damage, local inflammatory reaction and haemorrhage that are associated with remote organ failure, sepsis, and a high prevalence of mortality [5]. The complications of acute pancreatitis are mainly associated with the impairment of the lung function, which closely resembles the adult respiratory distress syndrome associated with other pathological conditions such as shock and ischemia/reperfusion [4]. It is known that releasing of inflammatory mediators and activated leukocytes generated in the acute pancreatitis contribute to the tissue damage and multiple organ failure, but the pathophysiological events of acute pancreatitis are not fully understood [6-8].

The haemodynamic disturbances of acute pancreatic are characterized by a marked arterial hypotension that is strongly related to shock syndrome, reperfusion failure and high plasma nitric oxide levels [9]. However, no studies exist investigating the reactivity of vascular smooth muscle to relaxing and contracting agents in experimental model of pancreatitis. Therefore, the aim of this work was to evaluate the vascular reactivity of pulmonary and mesenteric artery rings from rats submitted to experimental acute pancreatitis. To achieve this, animals were submitted to either sodium taurocholate (TAU) or phospholipase A₂ (PLA₂; from *Naja mocambique mocambique* venom) in the common bile duct, the former of which cause a severe haemorrhagic necrotizing pancreatitis [10] whereas the latter causes an edematous form of pancreatitis [11,12].

Methods

Animals

All experiments were carried out in accordance with the guidelines for animal care of the State University of Campinas (UNICAMP). Animals were housed in the animal care facility at the Department of Pharmacology in a room maintained at 20–21°C with 12:12-h light-dark cycle. Male Wistar rats, weighing 230–280 g, were divided into three groups named: saline (SAL)-; taurocholate (TAU)- and phospholipase A₂ (PLA₂)-injected animals.

Acute pancreatitis induction

Acute pancreatitis was induced by the injection of taurocholate or PLA₂ from *Naja mocambique mocambique* into the common bile duct of rats, as described previously [17,20]. Briefly, the animals were anaesthetized with a mixture of ketamine (25 mg/kg, i.p) and xylazine (10 mg/kg, i.p) and a medium laparotomy was performed. The duodenal loop was exteriorized and the common bile duct was cannulated transduodenally with a polyethylene tube. Saline (0.9%; vehicle), sodium taurocholate (5%) or PLA₂ (obtained from *Naja mocambique mocambique* venom; 300 µg/kg) were injected into the duct in a final volume of 0.3 ml, with a constant flow over a 1 min period. The hepatic portion of the biliopancreatic duct was clamped before injecting the solutions, after which the abdomen was closed in two layers. After 4 h of duct injection, the animals were sacrificed (ketamine/xylazine, i.p.) and blood samples were collected for biochemical analysis. Mesenteric and pulmonary artery rings were isolated for construction of concentration-response curves.

Concentration-response curves to acetylcholine, sodium nitroprusside and phenylephrine

The mesenteric and pulmonary arteries were isolated carefully and placed in freshly prepared Krebs solution containing (mM): NaCl, 118; NaHCO₃, 25; glucose, 5.6; KCl, 4.7; KH₂PO₄, 1.2; MgSO₄ 7H₂O, 1.17 and CaCl₂ 2H₂O, 2.5. The arteries were cleaned of all adherent tissue and cut in rings of approximately 2 mm. Each ring was suspended between two wire hooks and mounted in 10 ml organ chambers with Krebs solution at 37°C, pH 7.4 and continuously aerated with a mixture of 95% O₂ and 5% CO₂ under a resting tension of 10 mN. After 1 hour of stabilization period, the tissues were pre-contracted with KCl 80 mM and washed. Cumulative concentration-response curves to vasodilator agents: acetylcholine (ACh; 10 nM – 100 µM for both arteries) and sodium nitroprusside (SNP; 100 pM – 1 µM for mesenteric and 100 pM – 3 µM for pulmonary artery) were obtained. Relaxing responses were calculated relative to the maximal changes from the pre-contraction produced by phenylephrine in each preparation, which was taken as 100% (PHE, 1 µM for mesenteric rings and 10 µM for pulmonary artery rings).

Concentration-response curves were also obtained for the α-adrenergic agonist, phenylephrine (PHE; 1 nM – 10 µM for both arteries), in the presence of beta-blocker, propranolol (100 nM). The contraction responses were calculated relative to the maximal changes from pre-contraction produced by KCl 80 mM in each preparation, which was taken as 100%.

All concentration-response data were evaluated for a fit to a logistics function in the form:

$$E = E_{\max} / ((1 + (10^c / 10^x)^n) + \Phi)$$

where E is the effect of above basal; E_{\max} is the maximum response produced by the agonist; c is the logarithm of the EC_{50} , the concentration of agonist that produces half-maximal response; x is the logarithm of the concentration of agonist; the exponential term, n is a curve-fitting parameter that defines the slope of the concentration response line, and Φ is the response observed in the absence of added agonist. Nonlinear regression analysis to determine the parameters E_{\max} , $\log EC_{50}$, and n were done using GraphPad Prism (GraphPad Software Inc., San Diego, CA) with the constraint that $\Phi = 0$. The responses for each agonist are showed as the mean \pm SEM of pEC_{50} and E_{\max} .

Determination of serum nitrite/nitrate (NO_x^-) levels

In order to evaluate the NO production, the serum levels of nitrite (NO_2^-) plus nitrate (NO_3^-) were measured. Briefly, immediately after collecting arterial blood, the samples were centrifuged (8,000 g) for 10 min, and the resulting serum supernatant was stored at $-80^\circ C$. Serum samples were ultrafiltered through microfilter cups (Microcon Centrifugal Filter Units, 10 kDa; Millipore, Bedford, MA, USA). The NO_x^- concentration of the resulting filtrate solution was determined using a commercially available kit (Cayman Chemical, Ann Arbor, MI, USA) according to the manufacturer's instructions. This assay determines the total NO based on the enzymatic conversion of nitrate to nitrite by nitrate reductase. After the conversion, the spectrophotometric measurement of nitrite is accomplished by using the Griess reaction. The resulting deep purple azo compound absorbs light at 540–550 nm.

Drugs and solutions

Acetylcholine, PLA_2 from *Naja mocambique mocambique* venom, sodium nitroprusside, sodium taurocholate (taurocholic acid and sodium salt) and phenylephrine were purchased from Sigma (St. Louis, MO, USA).

Statistical analysis

Data are expressed as mean \pm SEM of n experiments. Analysis of variance (ANOVA) for repeated measurements was performed for the appropriate results and Bonferroni

method was chosen as a post-test. A p values smaller than 0.05 was considered statistically significant.

Results

PLA_2 and TAU-induced rat pancreatitis

The injection of PLA_2 (from *Naja mocambique mocambique* venom) in the common bile duct at 300 $\mu g/kg$ (4 h) markedly increased the pancreatic plasma protein extravasation and neutrophil influx (as evaluated by the increased myeloperoxidase activity), which was accompanied by neutrophil accumulation into the lungs and elevated serum amylase levels (Table 1), thus reproducing an acute pancreatitis condition. Similarly, injection of TAU (5%, 4 h) in the common bile duct increased significantly all parameters tests in comparison with saline group (Table 1). In TAU group, the lung myeloperoxidase activity and serum amylase levels were significantly higher than that of PLA_2 group ($P < 0.05$).

Concentration-response curves to vasodilator agents

Acetylcholine (ACh) produced a concentration-dependent relaxing response in both mesenteric and pulmonary rings. In mesenteric rings, the potency for ACh was significantly decreased from animals treated with TAU (4.2-fold) and PLA_2 (6.9-fold) compared to saline group. No changes were seen in the maximal responses for the muscarinic agonist in all groups (Table 2 and Figure 1). In pulmonary rings, neither potency nor maximal responses for ACh were altered in any groups (Table 2 and Figure 1).

The nitric oxide (NO) donor, sodium nitroprusside (SNP) produced a concentration-dependent relaxing response in both mesenteric and pulmonary rings. The potency and the maximal responses for SNP were not changed in rat mesenteric and pulmonary rings in all groups (Table 2 and Figure 1).

Concentration-response curves to vasoconstrictor agent

Phenylephrine produced concentration-dependent contractile responses in both mesenteric and pulmonary rings in all groups. The potency for this α -adrenergic agonist was significantly decreased in rat mesenteric and pulmonary rings from TAU group compared to SAL group (about 2.2- and 2.7-fold for mesenteric and pulmonary rings,

Table 1: Measurements of pancreatic plasma extravasation, pancreatic and lung myeloperoxidase (MPO) activity and serum amylase levels in phospholipase A_2 (PLA_2) – and taurocholate (TAU)-induced acute pancreatitis in rats.

Groups	Pancreatic plasma extravasation (μl of plasma)	Pancreatic MPO (U/mg of tissue)	Lung MPO (U/mg of tissue)	Serum Amylase (U/l)
SAL	198 \pm 10	1.4 \pm 0.3	18 \pm 1	408 \pm 21
PLA_2	303 \pm 30**	4.3 \pm 0.6**	32 \pm 3*	854 \pm 83**
TAU	298 \pm 38*	3.5 \pm 0.5**	48 \pm 6**	1258 \pm 141**

Data are expressed as mean \pm S.E.M. of 9 rats. * $P < 0.05$ and ** $P < 0.01$ compared to rats injected with saline (SAL). # $P < 0.05$ compared with PLA_2 group.

Table 2: Potency of acetylcholine (ACh), sodium nitroprusside (SNP) and phenylephrine (PHE) from rat arteries after pancreatitis

Groups	Mesenteric Artery			Pulmonary Artery		
	ACh	SNP	PHE	ACh	SNP	PHE
SAL	7.26 ± 0.06	8.58 ± 0.07	6.88 ± 0.06	6.86 ± 0.07	8.02 ± 0.05	7.00 ± 0.09
TAU	6.64 ± 0.14*	8.67 ± 0.06	6.54 ± 0.09*	6.66 ± 0.8	8.18 ± 0.08	6.57 ± 0.05*
PLA ₂	6.42 ± 0.08*	8.79 ± 0.04	6.74 ± 0.12	6.69 ± 0.10	8.02 ± 0.09	6.92 ± 0.07

Potency (pEC₅₀) of acetylcholine (ACh), sodium nitroprusside (SNP) and phenylephrine (PHE) obtained from concentration-response curves in mesenteric and pulmonary rings from saline (SAL); taurocholate (TAU) and phospholipase A₂ (PLA₂) groups. Potency is represented as -log of the molar concentration to produce 50% of the maximal response. Data are mean ± SEM for 5–9 animals. * different from SAL (P < 0.05).

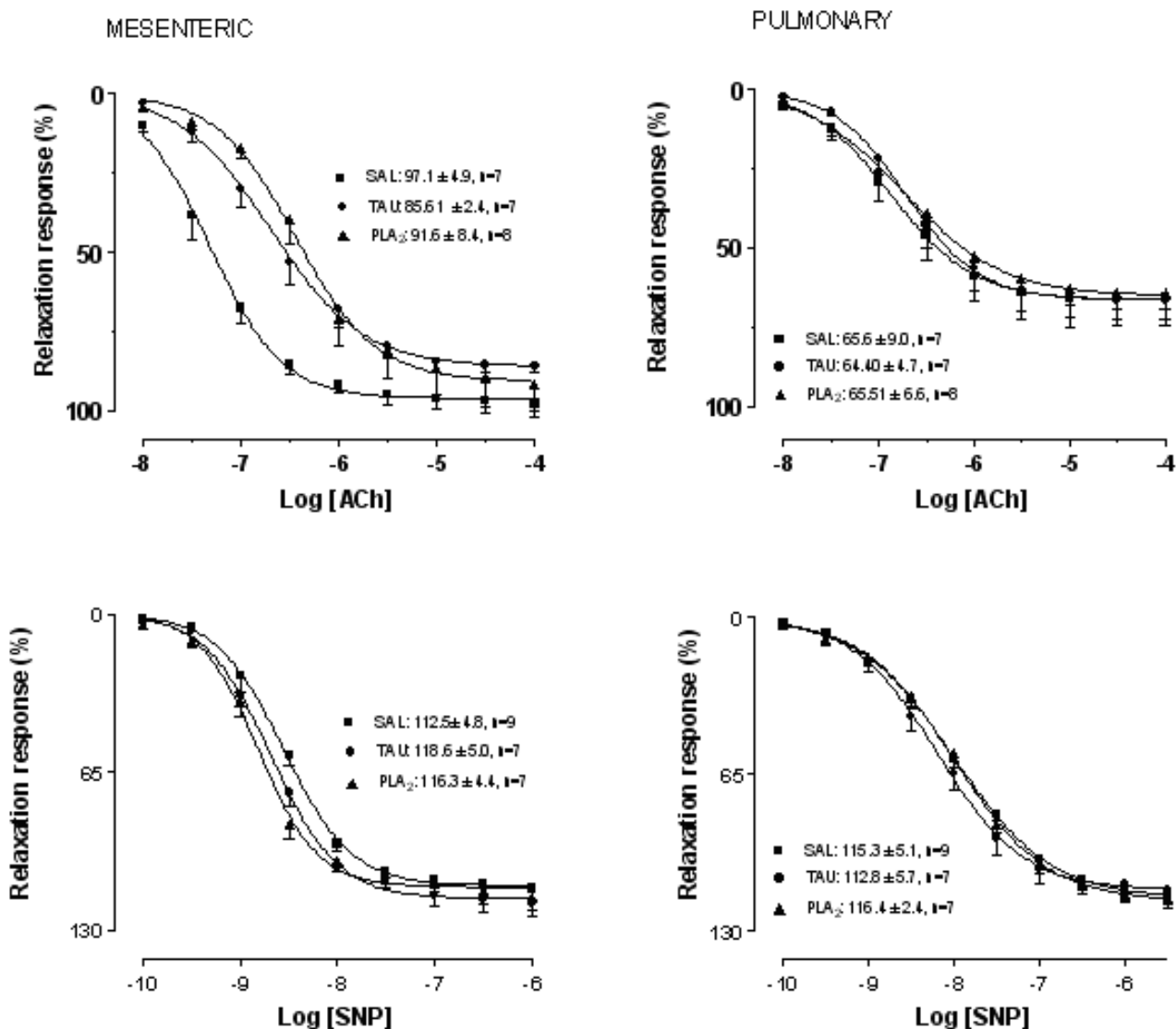


Figure 1
Concentration-response curves to acetylcholine (ACh, panel A) and sodium nitroprusside (SNP, panel B) in mesenteric and pulmonary rings from n Saline (SAL), l taurocholate (TAU), and s phospholipase A2 (PLA2).
 Maximal responses values were inserted in the figure. Data are mean ± SEM for 7–8 animals.

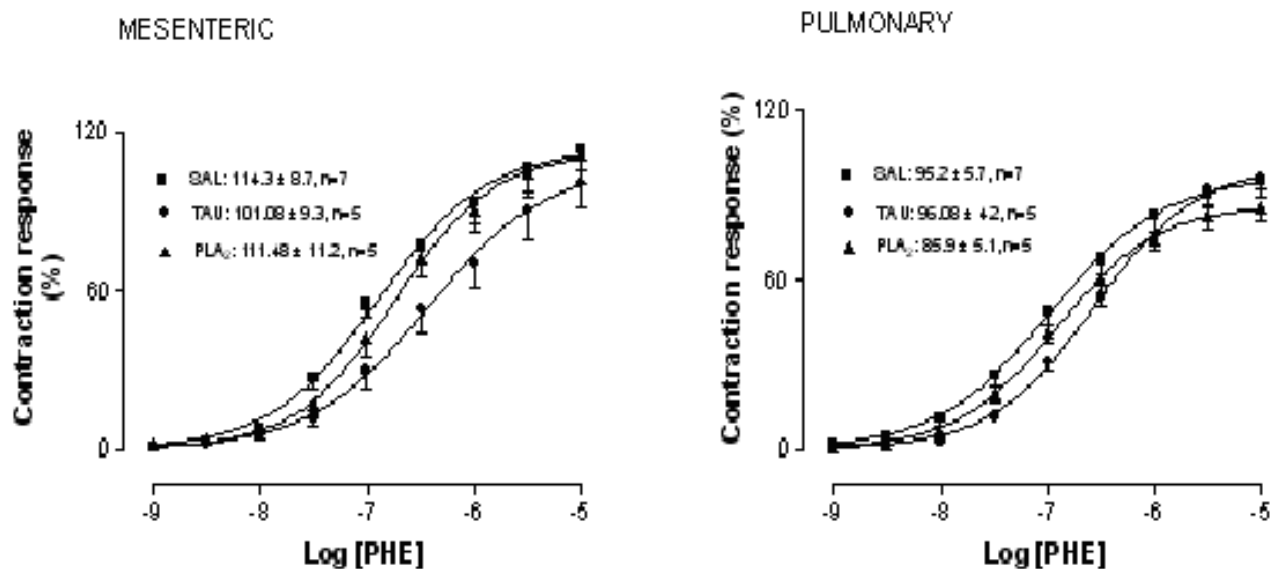


Figure 2
Concentration-response curves to phenylephrine (PHE) in mesenteric and pulmonary rings from n Saline (SAL), l taurocholate (TAU), and s phospholipase A₂ (PLA₂). Maximal responses values are inserted in the figure. Data are mean \pm SEM for 7 animals.

respectively, Table 2). No changes were seen in the maximal responses for the α -adrenergic agonist in this pancreatitis model (Figure 2). Neither potency nor maximal responses for PHE were affected by PLA₂-induced pancreatitis (Table 2 and Figure 2).

Serum nitrite/nitrate (NO_x⁻) levels

The nitrite/nitrate (NO_x⁻) levels were markedly increased in animals submitted to pancreatitis (TAU: 23.2 \pm 2.4 and PLA₂: 21.8 \pm 2.4 μ M) when compared to SAL group (13.0 \pm 1.5 μ M, $P < 0.05$), approximately 76 and 68% in TAU and PLA₂, respectively.

Discussion

The present study is the first to examine the vascular reactivity of isolated mesenteric and pulmonary rings after acute pancreatitis in rats. Our findings show that acute pancreatitis promotes reduction in the potency for ACh in mesenteric artery that was accompanied by marked increase in nitrite/nitrate levels. Decreased sensitivity of contracting response for PHE in both mesenteric and pulmonary preparations was also found.

Injection of PLA₂s [11,12] and taurocholate [10,13,14] into the common bile duct has been used as a useful model to reproduce the local and remote inflammation observed in the human pancreatitis, as observed by the increased vascular permeability and neutrophil influx in

the pancreas that is accompanied by elevated serum amylase levels and neutrophil accumulation into the lungs. Systemic haemodynamic disturbances are important complications of pancreatitis either in animal models [9] or in human [15]. Evidences show that arterial hypotension seen in pancreatitis has been associated with a massive overproduction of NO [9,16,17]. Our data show a significant decrease in endothelium-dependent relaxation response in mesenteric artery from both TAU and PLA₂ acute pancreatitis without changing for SNP. These findings suggest that both pancreatitis conditions lead to an endothelial dysfunction in mesenteric rings. Indeed, a marked increase in NO_x⁻ levels (approximately of 68–76%) in both experimental pancreatitis models was seen in our experimental protocol. Several lines of evidence have pointed out that certain disorders such as atherosclerosis, diabetes mellitus and inflammatory diseases provoke severe tissues damage and endothelial dysfunction that is strongly linked to overproduction of NO derived from leukocytes and/or reduction in the activity of antioxidant system leading to a massive formation of reactive species of oxygen [15,17-21]. Our findings show clearly a strong relationship between NO_x⁻ levels and decrease in endothelium-dependent relaxation response in mesenteric artery suggesting that the intense inflammatory responses in response to acute experimental pancreatitis promote severe arterial endothelial damage. On the other hand, no changes were seen in relaxing response

from pulmonary rings. The reason for that could be the time elapsed after acute pancreatitis, four hours. Thus, the endothelial cells from pulmonary arteries were not exposed to the massive production of reactive species of oxygen produced by pancreatitis in its early phase. Furthermore, previous study reported that the up-regulation of inducible NOS (iNOS) reach its maximum expression about six to twelve hours after pancreatitis induction [16].

Regarding to contractile response, TAU-induced pancreatitis caused a reduction of potency for PHE in both mesenteric and pulmonary artery rings, but no changes were found in contracting responses from PLA₂ group. Although it could be argued that an overproduction of NO could explain such discrepancy, our data that the levels of NO_x were similar in both groups exclude this possibility. It is well-established that mortality of rats in TAU-induced acute pancreatitis is higher compared to other pancreatitis models [22,23]. Indeed, TAU has been shown to induce a severe form of pancreatitis since it induces haemorrhagic necrotizing effects in the pancreas associated with higher remote inflammation in rats [10], which was confirmed in the present study. Thus, the subsensitivity of contractile response for PHE in isolated mesenteric and pulmonary rings from TAU-induced pancreatitis seen in this experimental model may reflect extensive cell damage secondary to massive systemic enzyme generation (amylase, lipase and others).

Conclusion

In conclusion, the acute pancreatitis provoked deleterious effects in endothelium-dependent relaxing response for ACh in isolated mesenteric rings that were strongly associated with high plasma NO_x⁻ levels as consequence of intense inflammatory responses. Furthermore, the subsensitivity of contractile response to PHE in both mesenteric and pulmonary rings might be due to the complications of this pathological condition in the early stage of pancreatitis.

Abbreviations

NO: nitric oxide; SAL: saline; TAU: tauracholate; PLA₂: phospholipase A₂; ACh: acetylcholine; SNP: sodium nitroprusside; PHE: phenylephrine; pEC₅₀: potency; E_{MAX}: maximal response; NO_x⁻: nitrite/nitrate; iNOS: inducible nitric oxide synthase.

Competing interests

The authors declare that they have no competing interests.

Authors' contributions

EAC and MAD carried out the acute pancreatitis induction, NO_x⁻ determinations, manuscript preparation; and the concentration-response curves; TF helped the NO_x⁻ determinations and acute pancreatitis induction; ECTL

participated in the design of the PLA₂-induced pancreatitis model; EA and AZ participated in the study coordination, in the preparation and revision of the manuscript. All authors read and approved the final manuscript

Acknowledgements

The authors are grateful to Fundacao de Amparo a Pesquisa do Estado de Sao Paulo (FAPESP).

References

- Pitchumoni CS, Patel NM, Shah P: **Factors influencing mortality in acute pancreatitis: can we alter them?** *J Clin Gastroenterol* 2005, **39**:798-814.
- Yadav D, Agarwal N, Pitchumoni CS: **critical evaluation of laboratory tests in acute pancreatitis.** *Am J Gastroenterol* 2002, **97**:1309-1318.
- Sekimoto M, Takada T, Kawarada Y, Hirata K, Mayumi T, Yoshida M, Hirota M, Kimura Y, Takeda K, Isaji S, Koizumi M, Otsuki M, Matsuno S: **JPN Guidelines for the management of acute pancreatitis: epidemiology, etiology, natural history, and outcome predictors in acute pancreatitis.** *Hepatobiliary Pancreat Surg* 2006, **13**:10-24.
- Steer ML: **Relationship between pancreatitis and lung disease.** *Resp Physiol* 2001, **128**:13-16.
- Lerch MM, Adler G: **Experimental animal models of acute pancreatitis.** *Int J Pancreatol* 1994, **15**:159-170.
- Bhatia M, Brady M, Shokuchi S, Christmas S, Neoptolemos JP, Slavin J: **Inflammatory mediators in acute pancreatitis.** *J Pathol* 2000, **190**:117-125.
- Bhatia M: **Novel therapeutic targets for acute pancreatitis and associated multiple organ dysfunction syndrome.** *Current Drug Targets Inflamm Allergy* 2002, **1**:343-51.
- Pastor CM, Matthay MA, Frossard JL: **Pancreatitis-associated acute lung injury.** *Chest* 2003, **124**:2341-2351.
- Al-Mufti RA, Williamson RCN, Mathie RT: **Increased nitric oxide activity in a rat model of acute pancreatitis.** *Gut* 1998, **43**:564-570.
- Aho HJ, Koskensalo SML, Nevalainen TJ: **Experimental pancreatitis in the rat.** *Scand J Gastroent* 1980, **15**:411-416.
- Camargo EA, Esquisatto LC, Esquisatto MA, Ribela MT, Cintra AC, Giglio R, Antunes E, Landucci EC: **Characterization of the acute pancreatitis induced by secretory phospholipases A₂ in rats.** *Toxicol* 2005, **46**:921-926.
- Camargo EA, Ferreira T, Nucci G, Landucci EC, Antunes E: **Role of substance P and bradykinin in acute pancreatitis induced by secretory phospholipases A₂.** *Pancreas* 2008 in press.
- Vaquero E, Gukovsky I, Zaninovic V, Gukovskaya AS, Pandolfi SJ: **Localized NF-κB activation and inflammatory response in taurocholate-induced pancreatitis.** *Am J Physiol Gastrointest Liver Physiol* 2001, **280**:G1197-G1208.
- Cosen-Binker LI, Binker MG, Negri G, Tiscornia O: **Experimental model of acute pancreatitis in Wistar rat. Glucocorticoid treatment profile.** *Dig Dis Sci* 2003, **48**:1453-1464.
- Mendelson RM, Anderson J, Marshall M, Ramsay S: **Vascular complications of pancreatitis.** *ANZ J Surg* 2005, **75**:1073-1079.
- Rau B, Bauer A, Wang A, Gansauge F, Weidenbach H, Nevalainen T, Poch B, Beger HG, Nussler AK: **Modulation of endogenous nitric oxide synthase in experimental acute pancreatitis: role of anti-ICAN 1 and oxygen free radical scavengers.** *Ann Surg* 2001, **233**:195-203.
- Um SH, Kwon YD, Kim CD, Lee HS, Jeon YT, Chun HJ, Lee SW, Choi JH, Ryu HS, Hyun JH: **The role of nitric oxide in experimental cerulean induced pancreatitis.** *J Korean Med Sci* 2003, **18**:520-526.
- Greenberg S, Xie J, Wang Y, Cai B, Kolls J, Nelson S, Hyman A, Sumner WR, Lipton H: **Tumor necrosis factor-alpha inhibits endothelium-dependent relaxation.** *J Appl Physiol* 1993, **74**:2394-2403.
- Swery JH, Mann GE: **Role of oxidative stress in the pathogenesis of acute pancreatitis.** *Scand J Gastroenterol* 1996, **219**:10-15.
- Touyz RM, Schiffrin EL: **Reactive oxygen species in vascular biology: implications in hypertension.** *Histochem Cell Biol* 2004, **122**:339-352.

21. Fortuño A, José GS, Moreno MU, Díez J, Zalba G: **Oxidative stress and vascular remodelling.** *Exp Physiol* 2005, **90**:457-462.
22. Leindler L, Morschl E, László F, Mándi Y, Takács T, Jármai K, Farkas G: **Importance of cytokines, nitric oxide, and apoptosis in the pathological process of necrotizing pancreatitis in rats.** *Pancreas* 2004, **29**:157-161.
23. Nikfarjam M, Cuthbertson CM, Malcontenti-Wilson C, Muralidharan V, Millar I, Christophi C: **Hyperbaric oxygen therapy reduces severity and improves survival in severe acute pancreatitis.** *J Gastrointest Surg* 2007, **11**:1008-1015.

Pre-publication history

The pre-publication history for this paper can be accessed here:

<http://www.biomedcentral.com/1471-230X/8/19/prepub>

Publish with **BioMed Central** and every scientist can read your work free of charge

"BioMed Central will be the most significant development for disseminating the results of biomedical research in our lifetime."

Sir Paul Nurse, Cancer Research UK

Your research papers will be:

- available free of charge to the entire biomedical community
- peer reviewed and published immediately upon acceptance
- cited in PubMed and archived on PubMed Central
- yours — you keep the copyright

Submit your manuscript here:
http://www.biomedcentral.com/info/publishing_adv.asp

