

Early increase in anti-inflammatory biomarkers is associated with the development of multiple organ dysfunction syndrome in severely injured trauma patients

Derek JB Kleinveld,^{1,2} Anita M Tuip-de Boer,¹ Markus W Hollmann,^{1,3} Nicole P Juffermans^{1,2}

¹Laboratory of Experimental Intensive Care and Anesthesiology, Amsterdam UMC, Location AMC, University of Amsterdam, Amsterdam, The Netherlands

²Intensive Care Medicine, Amsterdam UMC, Location AMC, University of Amsterdam, Amsterdam, The Netherlands

³Anesthesiology, Amsterdam UMC, Location AMC, University of Amsterdam, Amsterdam, The Netherlands

Correspondence to

Derek JB Kleinveld; d.j.kleinveld@amsterdamumc.nl

Received 7 June 2019

Revised 27 July 2019

Accepted 29 August 2019

ABSTRACT

Background As a result of improvements in the early resuscitation phase of trauma, mortality is largely driven by later mortality due to multiple organ dysfunction syndrome (MODS), which may be mediated by an early overdrive in the host immune response. If patients at risk for MODS could be identified early, preventive treatment measures could be taken. The aim of this study is to investigate whether specific biomarkers are associated with MODS.

Methods Multiple trauma patients presenting to the Amsterdam University Medical Centers, location Academic Medical Center, between 2012 and 2018 with an Injury Severity Score of 16 or higher were sampled on arrival at the emergency department. A wide variety of inflammatory cytokines, endothelial and lung-specific markers were determined. Comparisons were made between patients with and without MODS. Univariate and multivariate logistic regression was used to determine associations between specific biomarkers and MODS. A p value of 0.05 was considered to be statistically significant.

Results In total, 147 multiple trauma patients were included. Of these, 32 patients developed MODS (21.7%). Patients who developed MODS were more severely injured, had more traumatic brain injury and showed more deranged markers of coagulation when compared with patients without MODS. Overall, both proinflammatory and anti-inflammatory cytokines were higher in patients with MODS, indicative of a host immune reaction. In the multivariate analysis, the combination of anti-inflammatory proteins interleukin 1 receptor antagonist (IL-1RA) (OR 1.27 (1.07–1.51), p=0.002) and Clara cell protein 16 (CC-16) (1.06 (1.01–1.05), p=0.031) was most strongly associated with the development MODS.

Conclusions In trauma, anti-inflammatory proteins IL-1RA and CC-16 have the potential to early identify patients at risk for development of MODS. Further research is warranted to prospectively validate these results.

Level of evidence Prognostic study, level III.

BACKGROUND

Improvements in the management of major bleeding have led to shifts in morbidity and mortality towards later stages in the course of trauma.^{1,2} These

improvements in early trauma survival result in an increase in patients prone to develop inflammatory complications later in time, such as acute respiratory distress syndrome (ARDS), acute kidney injury (AKI) and multiple organ dysfunction syndrome (MODS).^{1–7} These complications all contribute to late mortality, which is around 20% to 30% in multiple trauma patients.^{1,2} It is hypothesized that the development of organ failure is mediated by an augmented immune response to damage-associated molecular patterns, which are released from tissues in large amounts after trauma, leading to MODS.^{8–12} Multiple different pathways, including inflammation, coagulation and endothelial activation, are involved in the progression of MODS.^{13,14} Previous studies using biomarkers to predict ARDS in trauma have shown that both epithelial and endothelial markers are involved.^{15,16} For example, Clara cell protein 16 (CC-16), which is an anti-inflammatory pulmonary secretory protein,^{17,18} and angiopoietin-2, a marker of endothelial activation, were increased in patients with ARDS compared with patients without ARDS.¹⁶ Other markers of endothelial activation include thrombomodulin-1 and syndecan-1, which are increased in patients developing MODS already prior to hospital arrival.¹⁴ Moreover, a study evaluating biomarkers in the progression of AKI after trauma showed an early increase in interleukin 1 receptor antagonist (IL-1RA), indicating an upregulation in blocking of interleukin 1 pathways.¹⁹ Another study evaluating the prehospital immune response showed potential relationships between both immune activation and suppression in patients with MODS, underlining the multifactorial process.²⁰ Additionally, evaluation of immune cell genes revealed a specific upregulation of pathways associated with cell death and a hyperacute innate immune response.¹³

Currently, however, it is unclear which markers from these different inflammatory pathways, endothelial activation pathways and/or lung-specific damage markers are most strongly correlated with the development of organ failure.^{21–23} If early measured biomarkers are associated with MODS, early targeted treatment strategies could be initiated.

The aim of this study was to identify biomarkers of inflammation, endothelial activation and markers related to lung-specific damage early in the course

© Author(s) (or their employer(s)) 2019. Re-use permitted under CC BY-NC. No commercial re-use. See rights and permissions. Published by BMJ.

To cite:

Kleinveld DJB, Tuip-de Boer AM, Hollmann MW, et al. *Trauma Surg Acute Care Open* 2019;4:e000343.

of trauma and investigate which of these biomarkers were most strongly associated with the development of MODS.

METHODS

Study participants

This cross-sectional study was conducted as a substudy of the observational prospective cohort study 'Activation of Coagulation and Inflammation in Trauma-3 (ACIT-3)'.²⁴

Patients from 2012 to 2018 admitted to the level 1 trauma unit were eligible for inclusion. Inclusion criteria were adult (18 years or older) patients suffering from blunt or penetrating trauma with vital signs indicative of shock (e.g. heart rate of 120 bpm or more, systolic blood pressure of 90 mmHg or less, or estimated blood loss >500 mL) or suspicion of one of the following clinical diagnoses: femur fracture, multiple rib fractures, pneumothorax, severe abdominal injury or pelvic fractures. Exclusion criteria were transfer from another hospital, presentation longer than 120 minutes after trauma, receipt of more than 2000 mL of crystalloids infusion prior to admission, burn injury of more than 5% of their body surface, use of anti-coagulant medication, known bleeding diathesis or known liver disease (Child-Pugh classification B or C).

Baseline hemodynamic vital variables were recorded. Traumatic brain injury (TBI) was scored as a head abbreviated Injury Severity Score (ISS) of 3 or more. Blood gas analysis and laboratory tests were assessed.

In this substudy, patients who had an injury severity (ISS) of 16 or higher were selected. Patients were further subdivided into patients with and without MODS.

Outcome parameters

ARDS was diagnosed according to the Berlin criteria.²⁵⁻²⁷ Patients with AKI stage I, II or III, as determined using the RIFLE criteria (acronym for Risk of renal dysfunction, Injury to the kidney, Failure of kidney function, Loss of kidney function and End-stage kidney disease), were scored.^{28,29} MODS was defined by sequential organ failure assessment score of 3 or higher in two or more organ systems, scored from 48 hours after trauma onwards. Furthermore, ventilator-days, intensive care stay, total length of stay in hospital and early (24 hours) and late mortality (30 days) were recorded.

Laboratory analysis of biomarkers

Whole blood was collected in EDTA tubes at trauma presentation in the emergency department (ED). Plasma was prepared with a single centrifugation step (1750G, 10 minutes, 18°C, Eppendorf 5804R). The upper two-thirds of the plasma was collected and stored at -80°C for later analysis. Plasma samples were assessed using a multianalyte luminex kit (R&D Systems, Minneapolis, USA), consisting of the following biomarkers: myeloperoxidase (MPO), tumor necrosis factor- α (TNF- α), TNF- α receptor 1 and 2 (TNF-R1 and TNF-R2), interleukin 6 (IL-6), interleukin 8 (IL-8), receptor for advanced glycation end-products (RAGE), first apoptosis signal (FAS) ligand, surfactant protein D (SP-D), Krebs von den Lungen-6 (KL-6), IL-1RA, interleukin 10 (IL-10), macrophage migration inhibitory factor-1 α (MIF-1 α), CC-16, E-selectin, tissue factor (TF), intercellular adhesion molecule 1 (ICAM-1), vascular cellular adhesion molecule 1 (VCAM-1) and plasminogen antigen inhibitor 1 (PAI-1). This panel was chosen based on previous literature on inflammation,^{19,30,31} endotheliopathy¹⁴ and lung-specific complications¹⁶ in trauma.

Statistical analysis

Statistical analysis was done using SPSS Statistics V.25 (IBM), graphs were made employing PRISM V.8 (GraphPad, California,

USA). Values of biomarkers below the detection value were rated as half of the lowest detectable value.³²

Normality was checked using Kolmogorov-Smirnov test and visual assessment of histograms. For normal distributed data, Student's t-test was used, and a Mann-Whitney U test was used for non-parametric data. χ^2 test or Fisher's exact test was used to detect differences between proportions.

After assessing the association between potential biomarkers and MODS, a univariate logistic regression was made using each biomarker independently. Biomarkers with p value <0.10 were further evaluated in the multivariate regression analysis using forward selection. A maximum of three association measures was used in the final multivariate regression analysis.³³

Receiver operating curves were made to visualize the potential sensitivity and specificity of biomarkers. The combined estimate was calculated using the estimate calculation from the multivariate regression analysis. A p value <0.05 was considered to be statistically significant.

RESULTS

Baseline characteristics

In total, 189 patients with an ISS of 16 or higher were included in ACIT trial between 2012 and 2018. Of the 189 patients, 42 were retrospectively excluded in this substudy based on: no informed consent obtained (n=33), anticoagulant medication use (n=4), time from hospital to admission longer than 2 hours (n=3), and burn injury of more than 5% of body surface (n=2). The baseline characteristics of the included patients (n=147) are shown in table 1. 21.7% of patients developed MODS, with a median time to development of 3 days. The most prevalent complication was AKI (13.6%) followed by ARDS (6.8%). Patients with MODS had significantly higher ISS compared with patients without MODS, more often had brain injury, had a higher base deficit on arrival and had more deranged coagulation parameters. As expected, patients with MODS had longer intensive care unit and hospital stay than patients without MODS. As patients need to survive the initial hit of trauma, early mortality occurred only in patients without MODS and was related either to TBI (80.0%) or exsanguination (20.0%). Reasons for late mortality included severe TBI (58.3%), severe organ failure (25.0%), circulatory collapse (8.3%) and psychiatric condition leading to suicide (8.3%). In patients who survived the first 24 hours but died within 30 days, mortality occurred after a median of 7.5 days.

Biomarkers are associated with multiple organ failure

Patients who developed MODS had significantly higher baseline levels of proinflammatory cytokines (IL-6, IL-8, TNF-R1, FAS ligand, RAGE and MPO) than patients without MODS. Also, higher levels of baseline IL-1RA were seen in patients with MODS compared with patients without MODS (table 2), indicative of an elevated anti-inflammatory response.

Baseline endothelial markers such as TF, ICAM-1, VCAM-1 and E-selectin did not differ between groups (table 2). CC-16, but not other lung-specific markers, was significantly higher in patients developing MODS compared with patients without MODS. In the univariate analysis IL-1RA and CC-16 were most strongly associated with the development of MODS (table 3). This association remained after correcting for injury severity. Receiver operating characteristic curve revealed fairly good prediction of MODS using CC-16 (area under the curve (AUC) 0.70), IL-1RA (AUC 0.73) and a two-biomarker model (AUC 0.76) (figure 1).

Table 1 Baseline characteristics

Parameter	All patients (n=147)	No MODS (n=115)	MODS (n=32)	P value
Demographics				
Age (years)	53 (31–64)	53 (35–64)	50 (28–68)	0.959
Female sex, n (%)	40 (27.2)	25 (21.7)	15 (46.9)	0.005
Blunt injury, n (%)	141 (95.9)	110 (95.7)	31 (96.9)	0.757
Injury Severity Score	22 (17–29)	20 (17–27)	25 (22–30)	0.010
TBI, n (%)	88 (59.9)	64 (55.7)	24 (75.0)	0.048
Laboratory parameters				
pH	7.37 (7.32–7.41)	7.38 (7.33–7.41)	7.34 (7.26–7.38)	0.002
PaCO ₂ (mm Hg)	42.8 (26.8–48.0)	42.8 (36.0–48.0)	45.4 (39.6–49.9)	0.094
P/F ratio (mm Hg)	315.0 (172.5–442.9)	333.8 (173.1–461.1)	220.5 (147.5–351.0)	0.069
Lactate (mmol/L)	2.1 (1.3–3.0)	2.0 (1.3–3.0)	2.2 (1.4–3.1)	0.917
BE	–1.5 (–3.6 to 0.5)	–1.2 (–3.1 to 0.8)	–2.7 (–6.1 to –0.6)	0.005
Leukocytes (×10 ⁹ /L)	10.8 (7.9–15.1)	11.1 (8.1–15.0)	10.2 (7.2–15.7)	0.555
Hb (g/dL)	12.5 (8.9–13.8)	12.8 (9.8–14.0)	9.6 (7.0–12.5)	<0.001
Creatinine (μmol/L)	73.0 (62.0–90.3)	73.0 (62.0–90.3)	70 (61.3–92.0)	0.913
ALT (U/L)	31.0 (21.0–64.0)	31.5 (22.0–63.3)	28.0 (18.0–71.0)	0.733
Coagulation				
Platelet count (×10 ⁹ /L)	217.5 (58.3)	220.6 (57.6)	203.0 (60.7)	0.690
PT (s)	11.8 (11.3–12.6)	11.7 (11.3–12.4)	12.7 (11.7–14.7)	0.001
aPTT (s)	24.0 (22.0–26.0)	24.0 (22.0–26.0)	25.0 (23.0–28.0)	0.008
Fibrinogen (g/L)	2.2 (0.7)	2.3 (0.7)	1.8 (0.6)	0.003
D-dimer (mg/L)	10.3 (3.5–32.0)	9.4 (3.3–32.0)	14.3 (5.1–30.0)	0.515
Outcomes				
Ventilation (days)	1 (0–4)	0 (0–1)	10 (4–16)	<0.001
ARDS, n (%)	10 (6.8)	1 (0.9)	9 (28.1)	<0.001
AKI, n (%)	20 (13.6)	4 (3.5)	16 (50.0)	<0.001
MODS, n (%)	32 (21.8)	0 (0)	32 (100)	ND
With ARDS	9/32	0	9/32	ND
With AKI	16/32	0	16/32	ND
With ARDS and AKI	6/32	0	6/32	ND
Length of ICU stay (days)	2 (1–5)	1 (0–3)	13 (6–19)	<0.001
Total length of stay (days)	8 (5–19)	7 (4–15)	24 (13–35)	<0.001
24-hour mortality, n (%)	10 (6.8)	10 (8.7)	0 (0)	0.119
24-hour to 28-day mortality, n (%)	12 (8.2)	3 (2.6)	9 (28.1)	<0.001

Data are represented as number (percentage), median (IQR) or mean (SD). MODS was defined as a sequential organ failure assessment (SOFA) score of 3 or more in two or more organ systems. TBI was defined as an abbreviated head injury score of 3 or higher.

Comparisons were made between patients with and without MODS.

AKI, acute kidney injury; ALT, alanine amino transferase; aPTT, activated partial thromboplastin time; ARDS, acute respiratory distress syndrome; BE, base excess; FiO₂, fractional inspired oxygen; Hb, hemoglobin; ICU, intensive care unit; MODS, multiple organ dysfunction syndrome; ND, not determined; PaCO₂, partial pressure of carbon dioxide; PaO₂, partial arterial oxygen pressure; P/F, PaO₂/FiO₂; PT, prothrombin time; TBI, traumatic brain injury.

DISCUSSION

The aim of this study was to examine the potential prognostic properties of plasma biomarkers to identify patients at risk for development of MODS after trauma. In this cohort of severely injured patients, 21.7% developed MODS. An early increase in anti-inflammatory proteins IL-1RA and CC-16 at presentation to the ED was associated with the development of MODS after 3 days, which was independent of the ISS.

In this study, proinflammatory cytokines were higher in patients with MODS compared with patients without MODS, but these were not independently associated with development of MODS. The strongest association was found with the anti-inflammatory biomarker IL-1RA. Previous studies have shown a profound immune cell activation in trauma with components of

activation and suppression, occurring already at ED presentation.²⁰ This suppression of immune cells after trauma, depicted by lower cytokine production, was also present in this cohort. Previously, we showed that the ex vivo ability of these trauma patients to generate an immune response to lipopolysaccharide stimulation was impaired when compared with healthy volunteers.³⁴ Also, trauma patients have lower expressions of monocyte toll-like receptors compared to healthy volunteers.³⁵ Furthermore, underlining these results, a study performed in 166 polytrauma patients revealed a similar pattern of early IL-10 release and a decrease in human leukocyte antigen—DR isotype expression, potentially reducing macrophage functions.³⁶ Additionally, although based on a small number of patients (n=44), major trauma was associated with an impairment of neutrophil

Table 2 Panel of systemic and lung proinflammatory and anti-inflammatory, endothelial and coagulation biomarkers

Biomarkers	All patients (n=147)	No MODS (n=115)	MODS (n=32)
MPO (ng/mL)	29.3 (20.2–44.7)	25.8 (18.2–41.7)	35.7 (26.2–58.8)**
TNF- α (pg/mL)	6.9 (1.7–13.4)	7.9 (1.7–13.2)	1.7 (1.7–14.6)
TNF-RI (pg/mL)	1766.4 (1292.4–2460.4)	1627.1 (1218.0–2288.7)	2280.1 (1631.9–3427.1)**
TNF-RII (pg/mL)	1665.0 (1226.8–2340.3)	1628.3 (1203.4–2309.7)	1841.1 (1314.4–3058.9)
IL-6 (pg/mL)	23.2 (13.6–60.4)	21.8 (11.2–45.5)	39.8 (21.4–108.2)**
IL-8 (pg/mL)	8.9 (5.8–15.6)	8.5 (5.4–13.0)	11.6 (8.0–24.8)**
RAGE (pg/mL)	1844.4 (1242.5–3423.0)	1670.3 (1151.3–3408.9)	2302.2 (1677.8–3439.9)*
FAS ligand (pg/mL)	54.7 (36.0–68.9)	51.5 (31.6–67.3)	58.1 (48.5–83.3)*
SP-D (ng/mL)	9.1 (5.8–13.4)	9.3 (6.5–13.1)	7.2 (5.2–14.0)
KL-6 (pg/mL)	18.9 (10.7–26.6)	19.3 (11.0–27.0)	17.2 (10.4–25.6)
IL-1RA (pg/mL)	861.8 (603.3–1394.4)	774.6 (569.9–1277.7)	1284.6 (777.2–2911.2)***
IL-10 (pg/mL)	19.4 (0.8–48.7)	18.9 (0.8–46.6)	32.7 (0.8–50.3)
MIF-1 α (pg/mL)	228.5 (143.7–266.4)	228.5 (141.8–264.4)	233.2 (158.0–288.9)
CC-16 (ng/mL)	14.0 (8.0–25.7)	12.3 (7.4–21.4)	25.0 (14.1–44.1)***
E-selectin (ng/mL)	16.6 (12.9–22.2)	17.5 (13.0–22.8)	16.2 (11.1–19.5)
TF (pg/mL)	30.7 (24.1–37.8)	30.5 (24.1–37.8)	31.3 (23.9–38.2)
ICAM-1 (ng/mL)	225.1 (162.4–324.8)	233.4 (162.4–324.8)	206.9 (159.5–336.1)
VCAM-1 (ng/mL)	769.1 (571.9–984.6)	769.1 (578.0–992.3)	776.8 (558.9–939.0)
PAI-1 (ng/mL)	3.8 (0.8–26.4)	3.7 (0.8–25.0)	9.5 (0.7–31.7)

Data are represented as median with IQR. Comparisons are made between patients with and without MODS.

* $p < 0.05$; ** $p < 0.01$; *** $p < 0.001$.

CC-16, Clara cell protein 16; FAS, first apoptosis signal; ICAM-1, intercellular adhesion molecule 1; IL, interleukin; IL-1RA, interleukin 1 receptor antagonist; KL-6, Krebs von den Lungen-6; MIF-1 α , macrophage migration inhibitory factor-1 α ; MODS, multiple organ dysfunction syndrome; MPO, myeloperoxidase; PAI-1, plasminogen antigen inhibitor 1; RAGE, receptor for advanced glycation end-products; SP-D, surfactant protein D; TF, tissue factor; TNF- α , tumor necrosis factor- α ; TNF RI (CD120a), tumor necrosis factor- α receptor I; TNF RII (CD120b), tumor necrosis factor- α receptor II; VCAM-1, vascular cell adhesion molecule 1.

function.³⁷ Interestingly, in mice with TBI and tibia fracture receiving IL-1RA treatment, a decrease in neutrophil activation markers and cerebral edema was seen.³⁸ The exact mechanism of immune paralysis directly after trauma is poorly understood. Our results suggest that IL-1RA might play a role in the progression of MODS.

In line with this, we found that CC-16 levels in patients with MODS were higher compared with patients without MODS. CC-16 is also an anti-inflammatory protein and suggested as biomarker for the development of pneumonia in trauma patients.¹⁷ In a study of 101 polytrauma patients with severe chest trauma, higher levels of CC-16 were found at admission and day 2 in patients who developed pneumonia compared with patients without pneumonia.¹⁷ Furthermore, patients with ARDS from multiple causes including trauma showed higher levels of CC-16 compared with patients without ARDS.³⁹ In this study, 28.1% of patients with MODS also fulfilled the ARDS criteria, which could partly explain the association of CC-16 with the development of MODS in this study. The anti-inflammatory effects of CC-16 have been studied in a murine model of thoracic trauma.

In this study, mice were treated with anti-CC-16 antibodies or IgG directly after trauma. Early anti-CC-16 treatment was associated with more neutrophil infiltration and more damaged lung tissue compared with IgG vehicle-treated mice.⁴⁰ Taken together, in the present study MODS seemed more related to anti-inflammatory proteins than to proinflammatory proteins. It remains to be determined how these cytokines contribute to organ failure after trauma, as their function is thought to be inhibition of the inflammatory response to prevent further tissue damage. We speculate that an overshoot in inflammation causes an overshoot in anti-inflammatory proteins. Alternatively, IL-1RA in trauma may exert more functions than inhibition of IL-1, in a fashion which is as yet undetermined.

Remarkably, markers of endothelial dysfunction did not differ between patients with and without MODS. Both groups had elevated VCAM-1 and ICAM-1 levels at presentation, indicative of endothelial barrier dysfunction, which is in line with previous literature.⁴¹ However, the finding that patients with MODS did not exhibit more endothelial dysfunction at presentation is in contrast with previous findings. These studies showed persistent

Table 3 Increased levels of IL-1RA and CC-16 are associated with MODS

Parameter	Univariate model OR (95% CI)	P value	Multivariate model OR (95% CI)	P value
ISS	1.04 (1.00 to 1.08)	0.040	ND	0.482
IL-1RA (ng/mL)	1.27 (1.07 to 1.51)	0.001	1.22 (1.02 to 1.47)	0.002
CC-16 (ng/mL)	1.03 (1.01 to 1.05)	0.001	1.03 (1.01 to 1.05)	0.031

Multivariate logistic regression model with forward selection to a maximum of three variables.

MODS was defined as a sequential organ failure assessment (SOFA) score of 3 or more in two or more organ systems.

CC-16, Clara cell protein 16; IL-1RA, interleukin 1 receptor antagonist; ISS, Injury Severity Score; MODS, multiple organ dysfunction syndrome; ND, not determined.

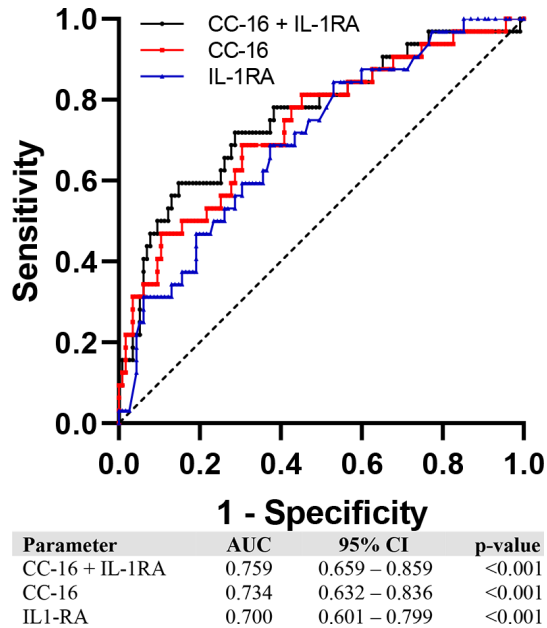


Figure 1 Receiver operating characteristic (ROC) curve of a single and two-biomarker model. Receiver-operator curve with CC-16, IL-1RA and a logistic estimate of these two biomarkers combined. AUC, area under the curve; CC-16, Clara cell protein 16; IL-1RA, interleukin 1 receptor antagonist.

higher syndecan-1 and thrombomodulin levels in patients who developed MODS.¹⁴ An explanation for this result could be that endothelial barrier function was measured with different biomarkers in this study (e.g. TF, ICAM-1, VCAM-1), which might increase later in the course of trauma⁴² than markers of glycocalyx degradation (eg, syndecan-1 and thrombomodulin). Alternatively, differences between the timing of measurement of biomarkers may have played a role.

This study has several limitations. Patients with MODS differed from patients not developing MODS. They were more often female and more often had TBI compared with patients without MODS. Also, these patients had higher base deficits and had more deranged coagulation parameters. Many factors contribute to the development of MODS including trauma mechanism, shock, coagulopathy and resuscitation strategies.^{43 44} Due to the limited number of MODS in this cohort, correction in the association model was limited. However, we did correct for injury severity, which is associated with many of these parameters, including shock, coagulopathy and TBI.⁴⁵

In conclusion, in this study, increased levels of anti-inflammatory proteins CC-16 and IL-1RA were associated with the development of MODS in trauma patients. Future research should validate these results in other trauma cohorts. Furthermore, the mechanisms by which anti-inflammatory pathways contribute to trauma-related MODS should be further studied.

Contributors DJBK drafted the article, performed luminex and statistical analysis, and revised all versions of the article. AMTB performed luminex analysis. MWH supervised the project. NPJ supervised the project, and revised all versions of the article. All authors approved the final article.

Funding The authors have not declared a specific grant for this research from any funding agency in the public, commercial or not-for-profit sectors.

Competing interests None declared.

Patient consent for publication Not required.

Ethics approval The ACIT-3 study was approved by the Ethics Committee of the Amsterdam University Medical Centers, location Academic Medical Center, and deferred informed consent for blood draws was obtained from patients or relatives.

Provenance and peer review Not commissioned; externally peer reviewed.

Data availability statement All data relevant to the study are included in the article. No data are available.

Open access This is an open access article distributed in accordance with the Creative Commons Attribution Non Commercial (CC BY-NC 4.0) license, which permits others to distribute, remix, adapt, build upon this work non-commercially, and license their derivative works on different terms, provided the original work is properly cited, appropriate credit is given, any changes made indicated, and the use is non-commercial. See: <http://creativecommons.org/licenses/by-nc/4.0/>.

REFERENCES

- Fröhlich M, Lefering R, Probst C, Paffrath T, Schneider MM, Maegele M, Sakka SG, Bouillon B, Wafaisade A, Committee on Emergency Medicine, Intensive Care and Trauma Management of the German Trauma Society Sektion NIS. Epidemiology and risk factors of multiple-organ failure after multiple trauma: an analysis of 31,154 patients from the TraumaRegister DGU. *J Trauma Acute Care Surg* 2014;76:921–7. discussion 7–8.
- Rauf R, von Matthey F, Croenlein M, Zyskowski M, van Griensven M, Biberthaler P, Lefering R, Huber-Wagner S, NISoDGu S, the Section NIS of DGU. Changes in the temporal distribution of in-hospital mortality in severely injured patients—An analysis of the TraumaRegister DGU. *PLoS One* 2019;14:e0212095.
- Daher P, Teixeira PG, Coopwood TB, Brown LH, Ali S, Aydelotte JD, Ford BJ, Hensley AS, Brown CV. Mild to moderate to severe: what drives the severity of ARDS in trauma patients? *Am Surg* 2018;84:808–12.
- Søvik S, Isachsen MS, Nordhuus KM, Tveiten CK, Eken T, Sunde K, Brurberg KG, Beitland S. Acute kidney injury in trauma patients admitted to the ICU: a systematic review and meta-analysis. *Intensive Care Med* 2019;45:407–19.
- Perkins ZB, Captur G, Bird R, Gleeson L, Singer B, O'Brien B, O'Brien B. Trauma induced acute kidney injury. *PLoS One* 2019;14:e0211001.
- Reilly JP, Bellamy S, Shashaty MGS, Gallop R, Meyer NJ, Lanken PN, Kaplan S, Holena DN, May AK, Ware LB, et al. Heterogeneous phenotypes of acute respiratory distress syndrome after major trauma. *Ann Am Thorac Soc* 2014;11:728–36.
- Wang K, Xie S, Xiao K, Yan P, He W, Xie L. Biomarkers of sepsis-induced acute kidney injury. *Biomed Res Int* 2018;2018:6937947.
- Xu J, Zhang X, Pelayo R, Monestier M, Ammollo CT, Semeraro F, Taylor FB, Esmon NL, Lupu F, Esmon CT. Extracellular histones are major mediators of death in sepsis. *Nat Med* 2009;15:1318–21.
- Guisasola MC, Alonso B, Bravo B, Vaquero J, Chana F. An overview of cytokines and heat shock response in polytraumatized patients. *Cell Stress and Chaperones* 2018;23:483–9.
- Vourc'h M, Roquilly A, Asehounne K. Trauma-Induced damage-associated molecular Patterns-Mediated remote organ injury and immunosuppression in the acutely ill patient. *Front Immunol* 2018;9:1330.
- Bortolotti P, Faure E, Kipnis E. Inflammasomes in tissue damages and immune disorders after trauma. *Front Immunol* 2018;9:1900.
- Seshadri A, Brat GA, Yorkgitis BK, Keegan J, Dolan J, Salim A, Askari R, Lederer JA. Phenotyping the immune response to trauma: a multiparametric systems immunology approach. *Crit Care Med* 2017;45:1523–30.
- Cabrera CP, Manson J, Shepherd JM, Torrance HD, Watson D, Longhi MP, Hoti M, Patel MB, O'Dwyer M, Nourshargh S, et al. Signatures of inflammation and impending multiple organ dysfunction in the hyperacute phase of trauma: a prospective cohort study. *PLoS Med* 2017;14:e1002352.
- Naumann DN, Hazeldine J, Davies DJ, Bishop J, Midwinter MJ, Belli A, Harrison P, Lord JM. Endotheliopathy of trauma is an on-Scene phenomenon, and is associated with multiple organ dysfunction syndrome. *SHOCK* 2018;49:420–8.
- Xu W, Song Y. Biomarkers for patients with trauma associated acute respiratory distress syndrome. *Military Med Res* 2017;4:25.
- Ware LB, Zhao Z, Koyama T, Brown RM, Semler MW, Janz DR, May AK, Fremont RD, Matthay MA, Cohen MJ, et al. Derivation and validation of a two-biomarker panel for diagnosis of ARDS in patients with severe traumatic injuries. *Trauma Surg Acute Care Open* 2017;2:e000121.
- Negrin LL, Halat G, Kettner S, Gregori M, Ristl R, Hajdu S, Heinz T. Club cell protein 16 and cytokeratin fragment 21-1 as early predictors of pulmonary complications in polytraumatized patients with severe chest trauma. *PLoS One* 2017;12:e0175303.
- Kropski JA, Fremont RD, Calfee CS, Ware LB. Clara cell protein (CC16), a marker of lung epithelial injury, is decreased in plasma and pulmonary edema fluid from patients with acute lung injury. *Chest* 2009;135:1440–7.
- Bihorac A, Baslanti TO, Cuenca AG, Hobson CE, Ang D, Efron PA, Maier RV, Moore FA, Moldawer LL. Acute kidney injury is associated with early cytokine changes after trauma. *Journal of Trauma and Acute Care Surgery* 2013;74:1005–13.
- Hazeldine J, Naumann DN, Toman E, Davies D, Bishop JRB, Su Z, Hampson P, Dinsdale RJ, Crombie N, Duggal NA, et al. Prehospital immune responses and development of

- multiple organ dysfunction syndrome following traumatic injury: a prospective cohort study. *PLoS Med* 2017;14:e1002338.
- 21 Fang Y, Li C, Shao R, Yu H, Zhang Q. The role of biomarkers of endothelial activation in predicting morbidity and mortality in patients with severe sepsis and septic shock in intensive care: a prospective observational study. *Thromb Res* 2018;171:149–54.
 - 22 Parlato M, Philippart F, Rouquette A, Mucadel V, Puchois V, Blein S, Bedos J-P, Diehl J-L, Hamzaoui O, Annane D, et al. Circulating biomarkers may be unable to detect infection at the early phase of sepsis in ICU patients: the CAPTAIN prospective multicenter cohort study. *Intensive Care Med* 2018;44:1061–70.
 - 23 Qiao Z, Wang W, Yin L, Luo P, Greven J, Horst K, Hildebrand F. Using IL-6 concentrations in the first 24 h following trauma to predict immunological complications and mortality in trauma patients: a meta-analysis. *Eur J Trauma Emerg Surg* 2018;44:679–87.
 - 24 Khan S, Brohi K, Chana M, Raza I, Stanworth S, Gaarder C, Davenport R, International Trauma Research Network (INTRN). Hemostatic resuscitation is neither hemostatic nor resuscitative in trauma hemorrhage. *J Trauma Acute Care Surg* 2014;76:561–8. discussion 7–8.
 - 25 Ranieri VM, Rubenfeld GD, Thompson BT, Ferguson ND, Caldwell E, Fan E, Camporota L, Slutsky AS, ARDS Definition Task Force. Acute respiratory distress syndrome: the Berlin definition. *JAMA* 2012;307:2526–33.
 - 26 Bingold TM, Lefering R, Zacharowski K, Meybohm P, Waydhas C, Rosenberger P, Scheller B, DIVI Intensive Care Registry Group. Individual organ failure and concomitant risk of mortality differs according to the type of admission to ICU – a retrospective study of SOFA score of 23,795 patients. *PLoS One* 2015;10:e0134329.
 - 27 Fröhlich M, Wafaisade A, Mansuri A, Koenen P, Probst C, Maegele M, Bouillon B, Sakka SG. Which score should be used for posttraumatic multiple organ failure? – Comparison of the MODS, Denver- and SOFA- Scores. *Scand J Trauma Resusc Emerg Med* 2016;24:130.
 - 28 Bellomo R, Ronco C, Kellum JA, Mehta RL, Palevsky P. Acute Dialysis Quality Initiative w. Acute renal failure - definition, outcome measures, animal models, fluid therapy and information technology needs: the Second International Consensus Conference of the Acute Dialysis Quality Initiative (ADQI) Group. *Crit Care* 2004;8:R204–12.
 - 29 Gomes E, Antunes R, Dias C, Araújo R, Costa-Pereira A. Acute kidney injury in severe trauma assessed by rifle criteria: a common feature without implications on mortality? *Scand J Trauma Resusc Emerg Med* 2010;18:1.
 - 30 Schrijver IT, Kemperman H, Roest M, Kesecioglu J, de Lange DW. Myeloperoxidase can differentiate between sepsis and non-infectious SIRS and predicts mortality in intensive care patients with SIRS. *ICMx* 2017;5:43.
 - 31 Huber-Lang M, Lambris JD, Ward PA. Innate immune responses to trauma. *Nat Immunol* 2018;19:327–41.
 - 32 Wood MD, Beresford NA, Copplestone D. Limit of detection values in data analysis: do they matter? *Radioprotection* 2011;46:S85–90.
 - 33 Peduzzi P, Concato J, Kemper E, Holford TR, Feinstein AR. A simulation study of the number of events per variable in logistic regression analysis. *J Clin Epidemiol* 1996;49:1373–9.
 - 34 Balvers K, Curry N, Kleinvelde DJB, Böing AN, Nieuwland R, Goslings JC, Juffermans NP. Endogenous microparticles drive the proinflammatory host immune response in severely injured trauma patients. *Shock* 2015;43:317–21.
 - 35 Heftrig D, Sturm R, Oppermann E, Konradowitz K, Jurida K, Schimunek L, Woschek M, Marzi I, Relja B. Impaired surface expression of HLA-DR, TLR2, TLR4, and TLR9 in ex vivo-in vitro stimulated monocytes from severely injured trauma patients. *Mediators Inflamm* 2017;2017:1–12.
 - 36 Timmermans K, Kox M, Vaneker M, van den Berg M, John A, van Laarhoven A, van der Hoeven H, Scheffer GJ, Pickkers P. Plasma levels of danger-associated molecular patterns are associated with immune suppression in trauma patients. *Intensive Care Med* 2016;42:551–61.
 - 37 Hazeldine J, Dinsdale RJ, Harrison P, Lord JM. Traumatic injury and exposure to mitochondrial-derived damage associated molecular patterns suppresses neutrophil extracellular trap formation. *Front Immunol* 2019;10.
 - 38 Sun M, Brady RD, Wright DK, Kim HA, Zhang SR, Sobey CG, Johnstone MR, O'Brien TJ, Semple BD, McDonald SJ, et al. Treatment with an interleukin-1 receptor antagonist mitigates neuroinflammation and brain damage after polytrauma. *Brain Behav Immun* 2017;66:359–71.
 - 39 Lin J, Zhang W, Wang L, Tian F. Diagnostic and prognostic values of Club cell protein 16 (CC16) in critical care patients with acute respiratory distress syndrome. *J Clin Lab Anal* 2018;32:e22262.
 - 40 Störmann P, Becker N, Vollrath JT, Köhler K, Janicova A, Wutzler S, Hildebrand F, Marzi I, Relja B. Early local inhibition of Club cell protein 16 following chest trauma reduces late sepsis-induced acute lung injury. *JCM* 2019;8:896.
 - 41 Sousa A, Raposo F, Fonseca S, Valente L, Duarte F, Gonçalves M, Tuna D, Paiva J-A. Measurement of cytokines and adhesion molecules in the first 72 hours after severe trauma: association with severity and outcome. *Dis Markers* 2015;2015:1–8.
 - 42 Partrick DA, Moore FA, Moore EE, Biff WL, Sauaia A, C. Barnett C. The inflammatory profile of interleukin-6, interleukin-8, and soluble intercellular adhesion molecule-1 in postinjury multiple organ failure. *The American Journal of Surgery* 1996;172:425–31.
 - 43 Miyamoto K, Shibata N, Ogawa A, Nakashima T, Kato S. Prehospital quick sequential organ failure assessment score to predict in-hospital mortality among patients with trauma. *Am J Emerg Med* 2019.
 - 44 Christie SA, Conroy AS, Callcut RA, Hubbard AE, Cohen MJ. Dynamic multi-outcome prediction after injury: applying adaptive machine learning for precision medicine in trauma. *PLoS One* 2019;14:e0213836.
 - 45 Maegele M. Acute traumatic coagulopathy: incidence, risk stratification and therapeutic options. *World J Emerg Med* 2010;1:12–21.