



OPEN

Brain structural correlates of functional capacity in first-episode psychosis

Erkan Alkan¹, Geoff Davies^{3,4}, Kathy Greenwood^{2,3} & Simon L. Evans¹✉

Impaired functional capacity is a core feature of schizophrenia and presents even in first-episode psychosis (FEP) patients. Impairments in daily functioning tend to persist despite antipsychotic therapy but their neural basis is less clear. Previous studies suggest that volume loss in frontal cortex might be an important contributor, but findings are inconsistent. We aimed to comprehensively investigate the brain structural correlates of functional capacity in FEP using MRI and a reliable objective measure of functioning [University of California, San Diego Performance-Based Skills Assessment (UPSA)]. In a sample of FEP ($n = 39$) and a well-matched control group ($n = 21$), we measured cortical thickness, gray matter volume, and white matter tract integrity (fractional anisotropy, FA) within brain regions implicated by previous work. The FEP group had thinner cortex in various frontal regions and fusiform, and reduced FA in inferior longitudinal fasciculus (ILF). In FEP, poorer functional capacity correlated with reduced superior frontal volume and lower FA in left ILF. Importantly, frontal brain volumes and integrity of the ILF were identified as the structural correlates of functional capacity in FEP, controlling for other relevant factors. These findings enhance mechanistic understanding of functional capacity deficits in schizophrenia by specifying the underlying neural correlates. In future, this could help inform intervention strategies.

Impaired functioning is a core feature of psychosis: individuals diagnosed with schizophrenia have poor long-term outcomes in social¹ and vocational² functioning. Functional disability affects the overwhelming majority of schizophrenia patients and is present at all stages of the illness^{2,3}. However, antipsychotic therapy has limited efficacy in improving functional capacity⁴ with symptomatic remission much more frequently observed than functional recovery². Evidence suggests that functional impairment is linked to negative symptoms in particular: negative symptom severity explains substantial variance in functional capacity both at baseline^{5,6} and over the longer-term⁷, in first episode psychosis (FEP).

However, the underlying neurobiology of functional impairment is not well understood, since relatively few studies have set out with a primary aim of investigating this in individuals with psychosis. A meta-analysis covering both FEP and chronic schizophrenia concluded that prefrontal cortex volume was the most consistent structural correlate of functional capacity although other regions (including limbic structures and ventricular enlargement) were also implicated⁸. Considerable inconsistency in findings was noted, likely at least partially attributable to the heterogeneity of measures used and the fact that most studies explored the question only as a secondary or supplementary analysis. Some used the University of California, San Diego Performance-Based Skills Assessment (UPSA), which assesses functional capacity for everyday life via a series of role-play simulations testing financial, transportation, household chores, communication, and planning skills⁹. Other studies assessed functioning via clinician-rated measures such as the Global Assessment of Function (GAF) scale¹⁰ or the Camberbell Assessment of Need (CAN) scale. Although well-used and less time-consuming than the UPSA, these measures tend to be less reliable and show lower validity in terms of measuring real-world outcomes¹¹. Others used subjective ratings of functional capacity, or more limited proxy measures such as socio-economic status (SES) (e.g. Takayanagi et al.¹²). Using comprehensive objective measures such as UPSA is crucial: it is the preferred methodology as it does not rely on patients' self-insight¹³. However, the brain structural correlates of UPSA performance has to date only been investigated in schizophrenia, not FEP¹⁴. The current study addresses this shortcoming in the literature.

In FEP, left prefrontal cortex volume has been shown to predict GAF-rated functional capacity¹⁵ and social/occupational functioning 1 year subsequent¹⁶. In ultra-high risk individuals, lower baseline volume in

¹Faculty of Health and Medical Sciences, University of Surrey, Guildford GU2 7XH, Surrey, UK. ²School of Psychology, University of Sussex, Brighton, UK. ³Sussex Partnership NHS Foundation Trust, Sussex, UK. ⁴Brighton and Sussex Medical School, Sussex, UK. ✉email: se0016@surrey.ac.uk

middle and inferior frontal gyrus predicted a subsequent 9-year decline in GAF-rated functioning¹⁷, while in schizophrenia, cortical thickness in middle/superior frontal has been linked to role functioning ability¹⁸. Prefrontal cortex functional activation patterns correlate with both cognitive performance and global functioning in FEP¹⁹, suggesting that prefrontal volume loss might impact functional capacity as a result of executive function impairment. Other studies have linked ventricular enlargement to poorer functional outcome in FEP measured using the CAN scale^{20,21}. In chronic schizophrenia, excessive ventricular enlargement has also been associated with poorer functional outcome²². Volume in neighbouring regions also shows associations. Right insula volume has been linked to GAF-rated functional decline in FEP²³ and at-risk individuals²⁴. Uwatoko, et al.²⁵ found that right insula volume correlated with occupational functioning which was assessed by the instrumental role category score of the Quality of Life Scale (QLS), in schizophrenia. They also reported that this relationship was mediated by negative symptoms. In a study which only focussed on subcortical structures, volume of the right thalamus correlated with UPSA scores in schizophrenia patients¹⁴. Overall, evidence suggests that volume loss in prefrontal regions, ventricular enlargement, and reduced insula and thalamus volume might constitute the neural correlates of functional capacity in schizophrenia, although not all findings are consistent. Further, since social functioning is an important component of functional capacity, it might be expected that regions implicated in the processing of social stimuli would also contribute. Studies suggest that gray matter reduction in fusiform gyrus might underlie the poorer facial processing abilities often observed in schizophrenia²⁶. Accurate perception of social stimuli is critical for some aspects of functional capacity, but whether volume reduction in fusiform gyrus also contributes to functioning has not been explicitly tested. However, evidence does point to a role for white matter integrity within specific tracts, with fractional anisotropy (FA) being the most commonly used measure in the literature for measuring this. Karlsgodt, et al.²⁷ found that FA in inferior longitudinal fasciculus (ILF) predicted subsequent deterioration in social and role functioning in 36 individuals at ultra-high risk of psychosis. In a sample of 30 patients with schizophrenia, Behdina et al.²⁸ found that FA of the ILF and arcuate fasciculus correlated with QLS scores, this relationship was mediated by negative symptoms. Thus, integrity of the ILF might be an important contributor to functional capacity: no studies have examined this in FEP but we address this here. Reduced FA in left ILF has been reported in FEP, however the significance of this is not clear²⁹.

Neuroimaging studies of individuals diagnosed with schizophrenia point to specific abnormalities in brain morphology associated with the disease and the aforementioned findings should be considered in this context. Ventricular enlargement is one of the most well-replicated of these and appears to be progressive in chronic patients³⁰. Most studies have shown that ventricular enlargement is also detectable in FEP^{31,32} although this is not always replicated, e.g. Berger et al.³³. In FEP, volumetric differences in other regions have been reported, although the literature is inconsistent. Overall, perhaps the most robust findings have been within fronto-temporal^{34,35} and thalamo-cortical networks³⁶, and regarding the latter, it has been proposed that thalamic pathology might be pivotal to the disease due to the role of this structure in coordinating information flow within and between neural networks³⁷. In FEP, volumetric decreases in thalamus, insula, and anterior cingulate have been consistently identified³⁸. In addition, cortical thickness reductions have been reported, particularly across frontal regions^{39–44} although some studies have also identified thinning in parietal and temporal regions including fusiform gyrus^{39,42}. Regarding cortical thinning, the studies that have investigated this in FEP point to a fairly consistent pattern of thinning across frontal and parietal cortices⁴⁴ sometimes accompanied by thinning in temporal regions^{42,45}. However, Song et al.⁴⁶ found only thinning in left insula and superior temporal gyrus.

In this study, we set out to investigate the brain structural correlates of functional capacity in FEP using UPSA, an optimal objective measure of functioning. Firstly, we used multiple regression to determine which demographic and symptom severity variables influenced UPSA scores: given previous findings, we expected negative symptoms to explain substantial variance. For the MRI analyses, we focused on volume, cortical thickness, and FA in specific regions of interest (ROIs) implicated by previous work. On these MRI measures, the FEP group was first contrasted with an age-, gender- and education- matched control group so as to contextualise the findings. Then we explored correlations between these measures and UPSA scores in the FEP group, controlling for the factors identified in the multiple regression analysis. This approach allowed us to focus specifically on the neurobiological correlates of functional capacity, independent of other explanatory variables.

Methods

Subjects. Ethical approval for the study was given by the London-Camden and Islington NHS Research and Ethics Committee (Ref: 11/LO/1877, project ID 72141). All research was performed in accordance with relevant guidelines and regulations. Written informed consent was obtained on the day of the study. 39 patients with FEP (9 females, age range 19–39, see Table 1) were recruited from Early Intervention in Psychosis services in Sussex Partnership NHS Foundation Trust (requiring duration of untreated psychosis < 2 years). Neuroleptic medication information was taken and converted to olanzapine and chlorpromazine equivalent doses⁴⁷. The short form of the Positive and Negative Syndrome Scale⁴⁸ was applied to assess patient's symptoms.

A further 21 age, gender, and education -matched healthy controls were also recruited (5 females, age range 18–38). For all participants, inclusion criteria were: age > 18 years, MRI safe, and no history of neurologic illness/substance misuse. FEP participants were required to have a primary diagnosis of FEP, while controls had no history of psychiatric illness. Additional measures were included within the test session and results from these have been reported elsewhere^{3,49–52}. In particular, please refer to Rae et al.⁵² for analyses of microstructural white matter abnormalities in this sample based on NODDI.

MRI acquisition. All imaging data was acquired with a Siemens Avanto 1.5 T scanner (Siemens Erlangen, Germany) using a 32-channel head coil and gradient strength 44 mT/m. To detect any artefacts, all images were visually inspected prior to analysis.

	Healthy control (N = 21)	FEP (N = 39)	<i>p</i>
Age, M (SD)	24.43 (5.62)	26.31 (5.57)	0.219 ^a
Female (N, %)	5 (23.8%)	9 (23.1%)	0.949 ^b
Education (years) (SD)	13.71 (1.76)	13.28 (1.68)	0.355 ^a
Medication (olanzapine equivalent mg/day) (SD)	N/A	13.15 (6.92)	N/A
Medication (chlorpromazine equivalent mg/day)	N/A	223.72 (274.56)	N/A
PANSS (3 item) positive symptoms (mean) (SD)	N/A	5.34 (2.40)	N/A
PANSS (2 item) cognitive disorganisation (mean) (SD)	N/A	3.31 (1.45)	N/A
PANSS (3 item) negative symptoms (mean) (SD)	N/A	5.74 (2.80)	N/A
UPSA	N/A	68.41 (19.18)	N/A

Table 1. Demographic characteristics and UPSA scores of the sample. *FEP* first-episode psychosis, *M (SD)* mean (standard deviation), *PANSS* Positive and Negative Syndrome Scale, *N/A* not applicable. ^aIndependent sample *t* test, ^bPearson Chi-square.

T1 structural. A high-resolution T1-weighted structural image was acquired using an MPRAGE sequence with the following parameters: TR/TE = 2730 ms/3.57 ms; GRAPPA acceleration 2; an in-plane matrix of 256 × 256 pixels over a FOV of 256 mm × 240 mm; flip angle 7°; slice thickness 1 mm yielding 192 sagittal plane slices; coronal and axial resolution 1 mm; acquisition time 5 min 58 s.

Gray matter volume and cortical thickness measurements. The gray matter volumes and cortical thickness measures were calculated by FreeSurfer 6.0.0 using the “recon-all” pipeline (<https://surfer.nmr.mgh.harvard.edu>). Parcellation was based on the Destrieux atlas⁵³.

Neurite orientation dispersion and density imaging (NODDI). Three diffusion-weighted shells were acquired using $b = 300, 800, \text{ and } 2400 \text{ s/mm}^2$ with 9, 30, and 60 unique non-collinear diffusion directions, respectively. In addition, 11 non-diffusion-weighted volumes (i.e. $b \approx 0$) were acquired. A NODDI microstructural model was computed and fitted to the data using the NODDI toolbox for MATLAB⁵⁴ that provided measures of neurite density, orientation dispersion, and FA in native space. After normalisation, binarized masks (from the JHU white-matter tractography atlas included with FSL⁵⁵) were applied to calculate FA in the ILF.

Note. Further details regarding the pre-processing and the acquisition of T1 structural, gray matter volume, and cortical thickness measurements are presented in Supplementary Materials.

The University of California, San Diego Performance-Based Skills Assessment (UPSA). Functional capacity was measured by the UCSD Performance-based Skills Assessment (UPSA)⁹. The UPSA is an instrument to assess the capacity to complete everyday tasks across 5 domains: finance, communication, comprehension and planning, transportation, and household chores. The UPSA has been assessed for reliability and validated in schizophrenia⁵⁶ and employed in FEP before^{3,6,51,57}. Of the 39 FEP participants, 34 completed the UPSA.

Statistical analysis. IBM SPSS Statistics 21.0 was used to conduct statistical analyses. On demographic variables, groups were compared using independent sample *t* tests (for age and years of education), and a χ^2 test (for gender).

To identify significant predictors of UPSA in the FEP group, multiple linear regression analysis was performed (enter method): age, gender, years of education, PANSS negative, and chlorpromazine equivalent were entered as independent variables. Multicollinearity was observed to be low: the VIF values never approached or exceeded the generally-accepted critical value of 10, and in fact, were typically much lower (< 3).

For between-group comparisons of cortical thickness, an ROI approach was taken using regions that have been associated with functional capacity by previous studies. Specifically, as indicated by a meta-analysis⁸ prefrontal cortex is most consistency implicated, with previous findings pointing to structural correlates across middle and lateral prefrontal cortex^{15–17}: as such we included Superior Frontal, Right VLPFC, Left VLPFC, Middle Frontal, Rostral Anterior Cingulate in our set of ROIs. Previous work has also implicated ventricular enlargement^{20–22}, right insula volume^{23–25}, and volume of the right thalamus¹⁴ to poorer functional outcome; thus these regions were also included. We also included fusiform due to its role in the processing of social stimuli social functioning which is an important contributor to functional capacity; despite this, it has not been explored by previous work. For FA measures, we focused only on bilateral ILF as reduced FA in this tract has been consistently implicated in functional capacity by two prior studies^{27,28}. Group comparisons of the neural indices were analysed using analyses of covariance (ANCOVAs), with age and gender as covariates.

Thickness ROIs. Superior Frontal, Right VLPFC, Left VLPFC, Middle Frontal, Rostral Anterior Cingulate, Right Fusiform, Left Fusiform, Right Insula.

Volume ROIs. Superior Frontal, Right VLPFC, Left VLPFC, Middle Frontal, Rostral Anterior Cingulate, Right Fusiform, Left Fusiform, Right Insula, Right Thalamus, Right Lateral Ventricle, Left Lateral Ventricle.

FA ROIs. Right ILF, Left ILF.

To investigate the relationships between functional capacity (UPSA) and brain structural measures (volume and thickness within the same ROIs), partial correlations were performed, with age, medication, and PANSS scores as control variables. To test the relationships between functional capacity (UPSA) and FA in ILF, partial correlations were performed. Previous published work using the NODDI data from these participants⁵² showed that ILF FA was not related to medication or symptom severity, but there was an effect of age. Therefore age was included as a control variable in the FA partial correlation analyses.

Results

Demographic data of the study sample. No statistically significant differences were observed between FEP and healthy controls on any demographic variables (all p values > 0.05 , see Table 1). In the FEP group, the mean UPSA score was 68.41 (SD = 19.18, $N = 34$), which is slightly lower than previous FEP studies in which their mean scores were 74.7⁵¹ and 77.5⁶.

Demographic and clinical predictors of UPSA. Age, gender, years of education, PANSS negative scores, and chlorpromazine equivalent were used as independent variables in a multiple linear regression model to predict the UPSA scores. Using the enter method, a statistically significant model emerged ($F_{5,27} = 3.343$, $p = 0.018$, adjusted $R^2 = 0.268$). Negative symptom severity ($p = 0.035$) and medication ($p = 0.024$) were found to be significant predictors of UPSA scores (Table S1).

MRI—structural differences between FEP and controls. Between-group differences were assessed using ANCOVA with age and gender as covariates. Bonferroni-corrected thresholds for multiple comparisons were applied and the adjusted alpha values were 0.00625 (i.e., 0.05 divided by 8) for thickness, 0.0045 (i.e., 0.05 divided by 11) for volume and 0.025 for FA (i.e., 0.05 divided by 2) within the preselected ROIs.

Cortical thickness. After correction for multiple comparisons, thinner cortices were observed in FEP within superior frontal, middle frontal, right VLPFC, and right fusiform. The results also suggested that FEP had thinner cortices in left VLPFC, left fusiform, and right insula, although these did not survive correction for multiple comparisons. There were no statistically significant differences in rostral anterior cingulate (Table 2).

Gray matter volume and ventricle differences. Results suggested that FEP had lower volume in right hemisphere thalamus, and larger lateral ventricles (bilaterally). However, these differences were not significant after multiple comparisons. There were no statistically significant differences in the other ROIs (Table 2).

FA differences. FEP had reduced FA in the right and left ILF compared to healthy controls; these differences survived correction for multiple comparisons (Bonferroni corrected $p < 0.025$) (Table 2).

Correlations between UPSA scores and MRI measures. Partial correlation analyses (controlling for age, medication, and PANNS negative scores) were performed to investigate the relationships between UPSA and MRI measures. As above, a Bonferroni correction for multiple comparisons was employed and the adjusted alpha values were 0.00625 (i.e., 0.05 divided by 8) for thickness, 0.0045 (i.e., 0.05 divided by 11) for volume and 0.025 for FA (i.e., 0.05 divided by 2).

Grey matter volume. UPSA scores in FEP positively correlated with superior frontal volume (see Fig. 1a; Table 3) after correction for multiple comparisons. Associations were also seen in bilateral fusiform, rostral anterior cingulate, right VLPFC, and right insula, but these did not survive correction for multiple comparisons. No associations were seen in the middle frontal, left VLPFC, thalamus, and lateral ventricle (Table 3).

Cortical thickness correlates. UPSA scores in FEP group did not significantly correlate with thickness in any of the ROIs (all p values > 0.05) (Table S2).

FA correlates. UPSA scores in FEP group positively correlated with FA in left ILF, this relationship survived correction for multiple comparisons (see Fig. 1b; Table 3).

Discussion

Our primary aim was to comprehensively determine the brain structural correlates of functional capacity in FEP. As context, we also analysed brain structural differences between FEP and a healthy control group. In line with previous findings, PANNS negative scores and medication use explained significant variance in UPSA scores. Previous studies suggest negative symptoms are the strongest symptomatic contributor to poor functional capacity in FEP^{5,6} and schizophrenia⁵⁸. Likewise, in the present study negative symptoms emerged as a significant predictor of UPSA scores and underscores the importance of addressing negative symptoms as a treatment goal so as to promote better functioning in FEP.

Relative to the control group, FEP had thinner cortex in superior frontal, VLPFC, middle frontal, and fusiform. This accords with previous studies that point to consistent cortical thinning, particularly in frontal regions^{41,42,45,59}. These differences were not apparent when volume rather than cortical thickness was tested, however. Some previous work suggests that cortical thickness might be the more sensitive measure⁶⁰. Cortical

Thickness	Mean thickness		F	p
	HC	FEP		
Superior frontal	2.76	2.63	10.813**	0.002
Right VLPFC	2.63	2.51	10.604**	0.002
Left VLPFC	2.62	2.51	8.056*	0.006
Middle frontal	2.50	2.39	10.077**	0.002
Rostral anterior cingulate	2.73	2.69	0.212	0.647
Right fusiform	2.72	2.62	9.818**	0.003
Left fusiform	2.70	2.63	5.134*	0.027
Right insula	3.07	2.98	4.291*	0.043
Volumes	Mean volume (%ICV)		F	p
	HC	FEP		
Superior frontal	1.37	1.32	1.179	0.282
Right VLPFC	0.22	0.22	0.097	0.756
Left VLPFC	0.22	0.21	0.237	0.628
Middle frontal	0.68	0.67	0.057	0.811
Rostral anterior cingulate	0.15	0.15	0.005	0.943
Right fusiform	0.62	0.61	0.448	0.506
Left fusiform	0.64	0.63	0.373	0.544
Right thalamus	0.48	0.46	5.291*	0.025
Right lateral ventricle	0.26	0.41	5.143*	0.027
Left lateral ventricle	0.30	0.43	5.093*	0.028
Right insula	0.43	0.41	1.345	0.251
FA	Mean FA		F	p
Right ILF	0.4689	0.4446	6.865***	0.011
Left ILF	0.4478	0.4287	6.497***	0.014

Table 2. Cortical thickness, volumes (expressed as percentage of total intracranial volume) and FA in ILF, group comparisons (ANCOVA, age and gender covariates). *HC* healthy controls, *FEP* first episode of psychosis, *VLPFC* ventrolateral prefrontal cortex, *FA* fractional anisotropy, *ILF* inferior longitudinal fasciculus. ***Significant after Bonferroni's correction for multiple comparisons at $p < 0.025$, for FA differences, **Significant after Bonferroni's correction for multiple comparisons at $p < 0.00625$, for cortical thickness differences; *Significant at an uncorrected threshold, $p < 0.05$.

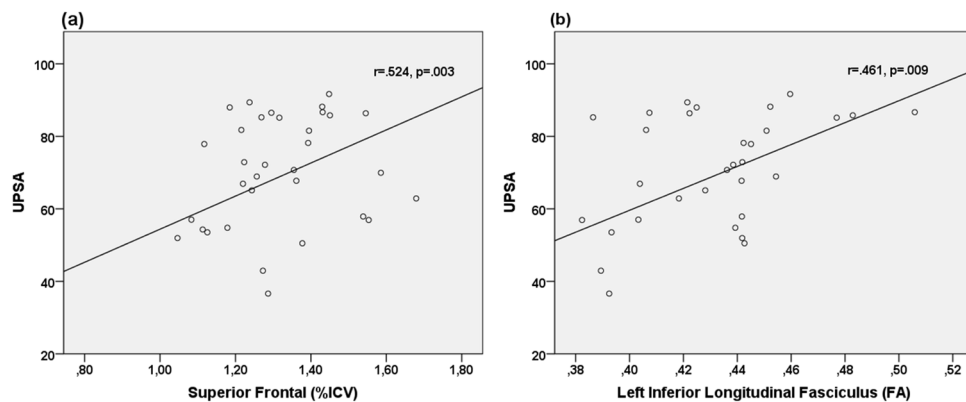


Figure 1. Scatterplots of functional capacity (UPSA) against ICV-adjusted superior frontal volume and FA in left ILF. (a) Larger superior frontal volume correlated with higher functional capacity. (b) FA in left ILF correlated positively with functional capacity.

thickness reflects the density and size of neuronal cells and neuropil (axons + dendrites + glia)^{60,61} and postmortem studies in schizophrenia point to reductions in these parameters, while the actual number of neurons appears to be unaffected^{62,63}. Thus reduced cortical thickness and volumetric indices in schizophrenia are assumed to reflect these alterations⁶⁴.

The volumetric analysis did point to ventricular enlargement and reduced volume in right thalamus in the FEP group, although these did not survive correction for multiple comparisons. Ventricular enlargement in FEP is a common finding^{31,32,65} as is reduced volume in right thalamus^{36,38}. We also explored FA in the ILF, based on

	<i>r</i>	<i>p</i>
Volumes		
Superior frontal	0.524**	0.003
Middle frontal	0.307	0.099
Rostral anterior cingulate	0.445*	0.014
Right VLPFC	0.364*	0.048
Left VLPFC	0.146	0.440
Right fusiform	0.400*	0.028
Left fusiform	0.401*	0.028
Right thalamus	−0.210	0.266
Right lateral ventricle	−0.082	0.666
Left lateral ventricle	−0.175	0.354
Right insula	0.418*	0.021
FA		
Right ILF	0.119	0.524
Left ILF	0.461**	0.009

Table 3. Brain structural (volumetric) correlates of UPSA (partial correlations, controlling for PANNS, age, and medication). FA (in ILF) correlates of UPSA (partial correlations, controlling for age). PANNS negative, VLPFC ventrolateral prefrontal cortex, FA fractional anisotropy, ILF inferior longitudinal fasciculus. **Significant after Bonferroni's correction for multiple comparisons at $p < 0.0045$ for volumes and $p < 0.025$ for FA; *Significant at an uncorrected threshold, $p < 0.05$.

evidence linking this parameter to functional capacity in patients with schizophrenia^{27,28}. Relative to controls, we found FEP to have reduced FA in both right and left ILF, which is in line with the previous findings. Hatton, et al.²⁹ and Ashtari, et al.⁶⁶ found reduced FA in the left ILF in young adult FEP patients, suggesting that reduced FA in this tract might be an important neural marker during the early stages of the disease.

The main focus of the current study was to investigate the structural correlates of functional capacity. A reliable objective measure (UPSA) was used and analyses investigated correlations between UPSA scores and brain structural indices within a set of brain structures implicated in previous studies. PANNS negative scores and medication use were controlled for in the analyses. The current paper represents a more thorough investigation compared to previous studies, many of which only investigated the links between structure and functional capacity as a secondary aim, or used a non-optimal measure of functioning^{8,11}. A previous study employing UPSA identified a positive relationship between right hemisphere thalamus volume and UPSA scores in patients with schizophrenia¹⁴ but the current study is the first to comprehensively test brain structural correlates of functional capacity using UPSA in an FEP sample. After correction for multiple comparisons, superior frontal volume was seen to positively correlate with UPSA score ($p = 0.003$). Positive correlations were also observed with other frontal regions (right superior frontal, right VLPFC, rostral anterior cingulate), although these did not survive correction for multiple comparisons. Positive relationships between functioning and volume in frontal regions have been found previously in FEP^{15,16}. Frontal volumetric reduction could lead to cognitive dysfunction and associated difficulties with daily functioning. Links between cognitive deficits and poor real-world functioning are well established in schizophrenia^{67,68}. For example, in schizophrenia, links between language ability and UPSA have been identified⁶⁹, correlations between global cognitive performance and UPSA have also been shown⁷⁰ although not necessarily across all UPSA domains⁷¹. In terms of underlying mechanisms, greater brain surface contraction in the 2 years after first episode of psychosis has been shown in dorsal frontal regions, compared to controls⁷², possibly reflecting an increased rate of synaptic pruning. Here, the fact that UPSA correlations were seen with volume rather than thickness measures is noteworthy. Brain volume is a function of both cortical surface area and thickness. Surface area and thickness appear to be both phenotypically and genetically distinct. Cortical thickness has been shown to be largely uncorrelated with surface area and volume estimates and is influenced by different genetic factors^{73,74}. On the other hand, grey matter volume generally correlates with cortical surface area⁷⁴. Investigations in patients with schizophrenia have found regions where grey matter volume reduction is present in the absence of cortical thinning^{75–77} and this might be attributable to surface area changes. Indeed, Kong et al.⁷⁸ identified regions (including superior frontal gyrus) where volume and thickness are discrepant, and subsequent ROI analyses demonstrated that changes in surface area and curvature could account for the discrepancy. Here, UPSA scores correlated with superior frontal volume but not thickness, suggesting that surface parameters in frontal regions could be a factor. Previous studies have found reduced cortical area in patients with schizophrenia (including in parietal, temporal, and medial frontal areas). Rimol et al.⁶⁰ found that while cortical thinning accounted for most of the volumetric differences between patients and controls, it was reduced surface area that explained volumetric differences between schizophrenia and bipolar patients. Analyses of surface area parameters were beyond the scope of the current study, but future work could consider these to investigate the contribution of frontal surface area parameters to functional capacity.

We took a conservative approach to correcting for multiple comparisons (Bonferroni). Although this stringency increases the confidence in our findings, it raises the risk of committing Type 2 errors. Therefore, it worth noting the correlations between UPSA and fusiform (left and right) as well as right insula volumes

which did not survive multiple comparisons correction. Right insula volume has been linked to functional capacity in at-risk individuals²⁴, FEP²³ and schizophrenia²⁵. This could reflect the putative role of this structure in coordinating information flow within and between neural networks³⁷. The possible links between UPSA and fusiform volumes are also interesting. Previous studies on functional capacity have neglected to include fusiform within their choice of ROIs, instead often focusing on frontal structures. The accurate appraisal of social stimuli is important for optimal functioning, therefore it is perhaps to be expected that reduced fusiform volumes, which have been linked to poorer facial processing abilities in schizophrenia²⁶, might contribute to functional capacity scores. These correlations merit further exploration in an expanded sample. No links were found here between ventricular enlargement and functional capacity. This does not accord with previous work in FEP^{20,21}, although these studies used the CAN scale which focuses on the health and social needs of the patient, whereas UPSA assesses the capacity to complete everyday tasks across several distinct domains.

Finally, we also investigated white matter integrity within the ILF. Lower FA was evident in the FEP group in both right and left ILF. Previous work has identified reduced FA in the left ILF in FEP^{29,66}. This was also found by a study in adolescents with schizophrenia⁶⁶, with reduced FA in this tract associated with visual hallucinations. Reductions in right ILF FA have been identified in schizophrenia samples and linked to the severity of positive symptoms⁷⁹ and thinking disorder⁸⁰. Associations between FA in ILF and functional capacity have been identified in ultra-high risk²⁷ and schizophrenia²⁸ samples but not before studied in FEP. The ILF connects brain regions that are important for social cognition abilities (including fusiform gyrus and amygdala). Indeed, a study in healthy controls found that FA in ILF correlated with facial emotion detection accuracy⁸¹; studies in other patient populations confirm this relationship⁸². Here, we found FA in left ILF to correlate with UPSA scores in FEP, demonstrating that microstructural abnormalities in this tract have direct consequences for functioning in this patient group. This could be driven by its impact on social cognition ability; future work should explore this possibility. Concerns have been raised regarding the reliability of FA as a marker of white matter integrity, since it is unduly impacted by crossing fibers⁸³. Newer, more sensitive measures have been proposed and should be considered in future work⁸⁴.

This study benefits from the use of a matched control group and (unlike many previous studies) the inclusion of a rigorous, objective measure of functioning (UPSA). Although time-consuming, this measure has been suggested to be more reliable and to have higher validity, thus enhancing confidence in our findings¹¹. This is the first study to use UPSA in exploring the brain structural correlates of functioning in FEP; also, compared to previous work, a broader range of structural MRI metrics were employed. Study weaknesses include a relatively modest sample size and the lack of a cognitive task battery, which would have allowed the mediating effect of cognitive ability to have been assessed.

In conclusion, this study identified brain structural differences in FEP, including thinner cortex in frontal regions and fusiform gyrus, and reduced FA in ILF. This concurs with previous findings. The consequences of these for functional capacity (UPSA score) were then comprehensively explored and volumetric (rather than cortical thickness) measures in frontal regions showed the strongest correlations. This suggests that, in FEP, loss of surface area in frontal cortex might have important consequences for functional capacity. A possible relationship with fusiform volume was also observed. Further, FA in left ILF showed a strong correlation with UPSA scores, suggesting that abnormalities in this tract, likely impairing connectivity between regions important for social cognition, are also important contributors to poor functional capacity in FEP. Identifying the brain structural correlates of poor functional capacity in FEP points to the neurobiological mechanisms that underlie functional impairment, this line of enquiry is especially important given that functional capacity shows only limited response to antipsychotic treatment.

Data availability

The datasets generated during the current study are available from the corresponding author on reasonable request.

Received: 28 May 2020; Accepted: 8 September 2020

Published online: 14 October 2020

References

1. Velthorst, E. *et al.* The 20-year longitudinal trajectories of social functioning in individuals with psychotic disorders. *Am. J. Psychiatry* **174**, 1075–1085. <https://doi.org/10.1176/appi.ajp.2016.15111419> (2017).
2. Harvey, P. D. *et al.* Functional impairment in people with schizophrenia: focus on employability and eligibility for disability compensation. *Schizophr. Res.* **140**, 1–8. <https://doi.org/10.1016/j.schres.2012.03.025> (2012).
3. Davies, G., Fowler, D. & Greenwood, K. Metacognition as a mediating variable between neurocognition and functional outcome in first episode psychosis. *Schizophr. Bull.* **43**, 824–832. <https://doi.org/10.1093/schbul/sbw128> (2017).
4. Swartz, M. S. *et al.* Effects of antipsychotic medications on psychosocial functioning in patients with chronic schizophrenia: findings from the NIMH CATIE study. *Am. J. Psychiatry* **164**, 428–436. <https://doi.org/10.1176/app.2007.164.3.428> (2007).
5. Best, M. W., Grossman, M., Oyewumi, L. K. & Bowie, C. R. Examination of the Positive and Negative Syndrome Scale factor structure and longitudinal relationships with functioning in early psychosis. *Early Interv. Psychiatry* **10**, 165–170. <https://doi.org/10.1111/eip.12190> (2014).
6. Vesterager, L. *et al.* Cognitive and clinical predictors of functional capacity in patients with first episode schizophrenia. *Schizophr. Res.* **141**, 251–256. <https://doi.org/10.1016/j.schres.2012.08.023> (2012).
7. Austin, S. F. *et al.* Predictors of recovery in first episode psychosis: the OPUS cohort at 10 year follow-up. *Schizophr. Res.* **150**, 163–168. <https://doi.org/10.1016/j.schres.2013.07.031> (2013).
8. Wojtalik, J. A., Smith, M. J., Keshavan, M. S. & Eack, S. M. A systematic and meta-analytic review of neural correlates of functional outcome in schizophrenia. *Schizophr. Bull.* **43**, 1329–1347. <https://doi.org/10.1093/schbul/sbx008> (2017).

9. Patterson, T. L., Goldman, S., McKibbin, C. L., Hughs, T. & Jeste, D. V. UCSD performance-based skills assessment: development of a new measure of everyday functioning for severely mentally ill adults. *Schizophr. Bull.* **27**, 235–245. <https://doi.org/10.1093/oxfordjournals.schbul.a006870> (2001).
10. Hall, R. C. W. Global assessment of functioning. *Psychosomatics* **36**, 267–275. [https://doi.org/10.1016/s0033-3182\(95\)71666-8](https://doi.org/10.1016/s0033-3182(95)71666-8) (1995).
11. Mausbach, B. T., Moore, R., Bowie, C., Cardenas, V. & Patterson, T. L. A review of instruments for measuring functional recovery in those diagnosed with psychosis. *Schizophr. Bull.* **35**, 307–318. <https://doi.org/10.1093/schbul/sbn152> (2008).
12. Takayanagi, Y. *et al.* Volume reduction and altered sulco-gyral pattern of the orbitofrontal cortex in first-episode schizophrenia. *Schizophr. Res.* **121**, 55–65. <https://doi.org/10.1016/j.schres.2010.05.006> (2010).
13. Leifker, F. R., Patterson, T. L., Bowie, C. R., Mausbach, B. T. & Harvey, P. D. Psychometric properties of performance-based measurements of functional capacity: test–retest reliability, practice effects, and potential sensitivity to change. *Schizophr. Res.* **119**, 246–252. <https://doi.org/10.1016/j.schres.2010.03.021> (2010).
14. Koshiyama, D. *et al.* Role of subcortical structures on cognitive and social function in schizophrenia. *Sci. Rep.* <https://doi.org/10.1038/s41598-017-18950-2> (2018).
15. Kasperek, T. *et al.* Gray matter morphology and the level of functioning in one-year follow-up of first-episode schizophrenia patients. *Prog. Neuropsychopharmacol. Biol. Psychiatry* **33**, 1438–1446. <https://doi.org/10.1016/j.pnpbp.2009.07.025> (2009).
16. Prasad, K. M. R., Sahni, S. D., Rohm, B. R. & Keshavan, M. S. Dorsolateral prefrontal cortex morphology and short-term outcome in first-episode schizophrenia. *Psychiatry Res. Neuroimaging* **140**, 147–155. <https://doi.org/10.1016/j.psychres.2004.05.009> (2005).
17. Reniers, R. L. E. P. *et al.* Neuroanatomical predictors of functional outcome in individuals at ultra-high risk for psychosis. *Schizophr. Bull.* **43**, 824–832. <https://doi.org/10.1093/schbul/sbw128> (2017).
18. Tully, L. M., Lincoln, S. H., Liyanage-Don, N. & Hooker, C. I. Impaired cognitive control mediates the relationship between cortical thickness of the superior frontal gyrus and role functioning in schizophrenia. *Schizophr. Res.* **152**, 358–364. <https://doi.org/10.1016/j.schres.2013.12.005> (2014).
19. Yoon, J. H. *et al.* Association of dorsolateral prefrontal cortex dysfunction with disrupted coordinated brain activity in schizophrenia: relationship with impaired cognition, behavioral disorganization, and global function. *Am. J. Psychiatry* **165**, 1006–1014. <https://doi.org/10.1176/appi.ajp.2008.07060945> (2008).
20. Cahn, W. *et al.* Brain volume changes in first-episode schizophrenia. *Arch. Gen. Psychiatry* **59**, 1002. <https://doi.org/10.1001/archpsyc.59.11.1002> (2002).
21. Cahn, W. *et al.* Brain volume changes in the first year of illness and 5-year outcome of schizophrenia. *Br. J. Psychiatry* **189**, 381–382. <https://doi.org/10.1192/bjp.bp.105.015701> (2006).
22. Mitelman, S. A. *et al.* Progressive ventricular expansion in chronic poor-outcome schizophrenia. *Cogn. Behav. Neurol.* **23**, 85–88. <https://doi.org/10.1097/wnn.0b013e3181c52a> (2010).
23. Mané, A. *et al.* Progressive gray matter changes in first episode schizophrenia: a 4-year longitudinal magnetic resonance study using VBM. *Schizophr. Res.* **114**, 136–143. <https://doi.org/10.1016/j.schres.2009.07.014> (2009).
24. Smieskova, R. *et al.* Insular volume abnormalities associated with different transition probabilities to psychosis. *Psychol. Med.* **42**, 1613–1625. <https://doi.org/10.1017/s0033291711002716> (2011).
25. Uwatoko, T. *et al.* Insular gray matter volume and objective quality of life in schizophrenia. *PLoS ONE* **10**, e0142018. <https://doi.org/10.1371/journal.pone.0142018> (2015).
26. Onitsuka, T. *et al.* Fusiform gyrus volume reduction and facial recognition in chronic schizophrenia. *Arch. Gen. Psychiatry* **60**, 349. <https://doi.org/10.1001/archpsyc.60.4.349> (2003).
27. Karlsgodt, K. H., Niendam, T. A., Bearden, C. E. & Cannon, T. D. White matter integrity and prediction of social and role functioning in subjects at ultra-high risk for psychosis. *Biol. Psychiatry* **66**, 562–569. <https://doi.org/10.1016/j.biopsych.2009.03.013> (2009).
28. Behdina, T. *et al.* Neuroimaging predictors of functional outcomes in schizophrenia at baseline and 6-month follow-up. *Schizophr. Res.* **169**, 69–75. <https://doi.org/10.1016/j.schres.2015.10.023> (2015).
29. Hatton, S. *et al.* White matter tractography in early psychosis: clinical and neurocognitive associations. *J. Psychiatry Neurosci.* **39**, 417–427. <https://doi.org/10.1503/jpn.130280> (2014).
30. Kempton, M. J., Stahl, D., Williams, S. C. R. & DeLisi, L. E. Progressive lateral ventricular enlargement in schizophrenia: a meta-analysis of longitudinal MRI studies. *Schizophr. Res.* **120**, 54–62. <https://doi.org/10.1016/j.schres.2010.03.036> (2010).
31. Cuesta, M. J. *et al.* Basal ganglia and ventricle volume in first-episode psychosis. A family and clinical study. *Psychiatry Res. Neuroimaging* **269**, 90–96. <https://doi.org/10.1016/j.psychres.2017.09.010> (2017).
32. De Peri, L. *et al.* Brain structural abnormalities at the onset of schizophrenia and bipolar disorder: a meta-analysis of controlled magnetic resonance imaging studies. *Curr. Pharm. Des.* **18**, 486–494. <https://doi.org/10.2174/138161212799316253> (2012).
33. Berger, G. E. *et al.* Ventricular volumes across stages of schizophrenia and other psychoses. *Aust. N. Z. J. Psychiatry* **51**, 1041–1051. <https://doi.org/10.1177/0004867417715914> (2017).
34. Andreasen, N. C. *et al.* Progressive brain change in schizophrenia: a prospective longitudinal study of first-episode schizophrenia. *Biol. Psychiatry* **70**, 672–679. <https://doi.org/10.1016/j.biopsych.2011.05.017> (2011).
35. Gutiérrez-Galve, L. *et al.* Changes in the frontotemporal cortex and cognitive correlates in first-episode psychosis. *Biol. Psychiatry* **68**, 51–60. <https://doi.org/10.1016/j.biopsych.2010.03.019> (2010).
36. Gong, Q., Lui, S. & Sweeney, J. A. A Selective review of cerebral abnormalities in patients with first-episode schizophrenia before and after treatment. *Am. J. Psychiatry* **173**, 232–243. <https://doi.org/10.1176/appi.ajp.2015.15050641> (2016).
37. Cronenwett, W. J. & Csernansky, J. Thalamic pathology in schizophrenia. *Curr. Top. Behav. Neurosci.* **4**, 509–528. https://doi.org/10.1007/7854_2010_55 (2010).
38. Ellison-Wright, I., Glahn, D. C., Laird, A. R., Thelen, S. M. & Bullmore, E. The anatomy of first-episode and chronic schizophrenia: an anatomical likelihood estimation meta-analysis. *Am. J. Psychiatry* **165**, 1015–1023. <https://doi.org/10.1176/appi.ajp.2008.07101562> (2008).
39. Bodnar, M. *et al.* Cortical thinning in temporo-parietal junction (TPJ) in non-affective first-episode of psychosis patients with persistent negative symptoms. *PLoS ONE* **9**, e101372. <https://doi.org/10.1371/journal.pone.0101372> (2014).
40. Haring, L. *et al.* Cortical thickness and surface area correlates with cognitive dysfunction among first-episode psychosis patients. *Psychol. Med.* **46**, 2145–2155. <https://doi.org/10.1017/s0033291716000684> (2016).
41. Janssen, J. *et al.* Gyral and sulcal cortical thinning in adolescents with first episode early-onset psychosis. *Biol. Psychiatry* **66**, 1047–1054. <https://doi.org/10.1016/j.biopsych.2009.07.021> (2009).
42. Pliatman, E. *et al.* Glutamatergic metabolites, volume and cortical thickness in antipsychotic-naïve patients with first-episode psychosis: implications for excitotoxicity. *Neuropsychopharmacology* **41**, 2606–2613. <https://doi.org/10.1038/npp.2016.84> (2016).
43. Sprooten, E. *et al.* Cortical thickness in first-episode schizophrenia patients and individuals at high familial risk: a cross-sectional comparison. *Schizophr. Res.* **151**, 259–264. <https://doi.org/10.1016/j.schres.2013.09.024> (2013).
44. Xiao, Y. *et al.* Altered cortical thickness related to clinical severity but not the untreated disease duration in schizophrenia. *Schizophr. Bull.* **41**, 201–210. <https://doi.org/10.1093/schbul/sbt177> (2013).
45. Crespo-Facorro, B. *et al.* Global and regional cortical thinning in first-episode psychosis patients: relationships with clinical and cognitive features. *Psychol. Med.* **41**, 1449–1460. <https://doi.org/10.1017/s003329171000200x> (2010).

46. Song, X. *et al.* Decreased cortical thickness in drug naïve first episode schizophrenia: In relation to serum levels of BDNF. *J. Psychiatr. Res.* **60**, 22–28. <https://doi.org/10.1016/j.jpsychires.2014.09.009> (2015).
47. Leucht, S. *et al.* Dose equivalents for second-generation antipsychotics: the minimum effective dose method. *Schizophr. Bull.* **40**, 314–326. <https://doi.org/10.1093/schbul/sbu001> (2014).
48. Kay, S. R., Fiszbein, A. & Opler, L. A. The Positive and Negative Syndrome Scale (PANSS) for schizophrenia. *Schizophr. Bull.* **13**, 261–276. <https://doi.org/10.1093/schbul/13.2.261> (1987).
49. Alkan, E., Davies, G., Greenwood, K. & Evans, S. L. H. Brain structural correlates of metacognition in first-episode psychosis. *Schizophr. Bull.* **46**, 552–561. <https://doi.org/10.1093/schbul/sbz116> (2019).
50. Davies, G. *et al.* Impairment of perceptual metacognitive accuracy and reduced prefrontal grey matter volume in first-episode psychosis. *Cogn. Neuropsychiatry* **23**, 165–179. <https://doi.org/10.1080/13546805.2018.1444597> (2018).
51. Wright, A. C., Davies, G., Fowler, D. & Greenwood, K. Three-year follow-up study exploring metacognition and function in individuals with first episode psychosis. *Front. Psychiatry* <https://doi.org/10.3389/fpsy.2019.00182> (2019).
52. Rae, C. L. *et al.* Deficits in neurite density underlie white matter structure abnormalities in first-episode psychosis. *Biol. Psychiatry* **82**, 716–725. <https://doi.org/10.1016/j.biopsych.2017.02.008> (2017).
53. Destrieux, C., Fischl, B., Dale, A. M. & Halgren, E. A sulcal depth-based anatomical parcellation of the cerebral cortex. *NeuroImage* [https://doi.org/10.1016/s1053-8119\(09\)71561-7](https://doi.org/10.1016/s1053-8119(09)71561-7) (2009).
54. Zhang, H., Schneider, T., Wheeler-Kingshott, C. A. & Alexander, D. C. NODDI: practical in vivo neurite orientation dispersion and density imaging of the human brain. *Neuroimage* **61**, 1000–1016. <https://doi.org/10.1016/j.neuroimage.2012.03.072> (2012).
55. Hua, K. *et al.* Tract probability maps in stereotaxic spaces: analyses of white matter anatomy and tract-specific quantification. *Neuroimage* **39**, 336–347. <https://doi.org/10.1016/j.neuroimage.2007.07.053> (2008).
56. Velligan, D. I. *et al.* The reliability and validity of the MATRICS functional assessment battery. *Schizophr. Bull.* **40**, 1047–1052. <https://doi.org/10.1093/schbul/sbt148> (2013).
57. Mendella, P. D. *et al.* Compensatory cognitive training for people with first-episode schizophrenia: results from a pilot randomized controlled trial. *Schizophr. Res.* **162**, 108–111. <https://doi.org/10.1016/j.schres.2015.01.016> (2015).
58. Iasevoli, F. *et al.* Clinical evaluation of functional capacity in treatment resistant schizophrenia patients: comparison and differences with non-resistant schizophrenia patients. *Schizophr. Res.* **202**, 217–225. <https://doi.org/10.1016/j.schres.2018.06.030> (2018).
59. Zugman, A. *et al.* Reduced dorso-lateral prefrontal cortex in treatment resistant schizophrenia. *Schizophr. Res.* **148**, 81–86. <https://doi.org/10.1016/j.schres.2013.05.002> (2013).
60. Rimol, L. M. *et al.* Cortical volume, surface area, and thickness in schizophrenia and bipolar disorder. *Biol. Psychiatry* **71**, 552–560. <https://doi.org/10.1016/j.biopsych.2011.11.026> (2012).
61. Parent, A. & Carpenter, M. B. *Carpenter's Human Neuroanatomy* (Williams and Wilkins, Baltimore, 1996).
62. Harrison, P. J. The neuropathology of schizophrenia. *Brain* **122**, 593–624. <https://doi.org/10.1093/brain/122.4.593> (1999).
63. Thune, J. J., Uylings, H. B. M. & Pakkenberg, B. No deficit in total number of neurons in the prefrontal cortex in schizophrenics. *J. Psychiatr. Res.* **35**, 15–21. [https://doi.org/10.1016/s0022-3956\(00\)00043-1](https://doi.org/10.1016/s0022-3956(00)00043-1) (2001).
64. Ehrlich, S. *et al.* Associations of cortical thickness and cognition in patients with schizophrenia and healthy controls. *Schizophr. Bull.* **38**, 1050–1062. <https://doi.org/10.1093/schbul/sbr018> (2011).
65. van Haren, N. E. M. *et al.* Progressive brain volume loss in schizophrenia over the course of the illness: evidence of maturational abnormalities in early adulthood. *Biol. Psychiatry* **63**, 106–113. <https://doi.org/10.1016/j.biopsych.2007.01.004> (2008).
66. Ashtari, M. *et al.* Disruption of white matter integrity in the inferior longitudinal fasciculus in adolescents with schizophrenia as revealed by fiber tractography. *Arch. Gen. Psychiatry* **64**, 1270. <https://doi.org/10.1001/archpsyc.64.11.1270> (2007).
67. Bowie, C. R. & Harvey, P. D. Cognitive deficits and functional outcome in schizophrenia. *Neuropsychiatr. Dis. Treat.* **2**, 531–536. <https://doi.org/10.2147/ndt.2006.2.4.531> (2006).
68. Green, M. F., Horan, W. P., Mathis, K. I. & Wynn, J. K. In *Cognitive Impairment in Schizophrenia: Characteristics, Assessment and Treatment* (ed. Harvey, P. D.) 85–97 (Cambridge University Press, Cambridge, 2013).
69. Kim, S.-J. *et al.* The relationship between language ability and cognitive function in patients with schizophrenia. *Clin. Psychopharmacol. Neurosci.* **13**, 288–295. <https://doi.org/10.9758/cpn.2015.13.3.288> (2015).
70. Keefe, R. S. E., Poe, M., Walker, T. M., Kang, J. W. & Harvey, P. D. The schizophrenia cognition rating scale: an interview-based assessment and its relationship to cognition, real-world functioning, and functional capacity. *Am. J. Psychiatry* **163**, 426–432. <https://doi.org/10.1176/appi.ajp.163.3.426> (2006).
71. Huang, Y.-C. *et al.* Defining cognitive and functional profiles in schizophrenia and affective disorders. *BMC Psychiatry* <https://doi.org/10.1186/s12888-020-2459-y> (2020).
72. Sun, D. *et al.* Brain surface contraction mapped in first-episode schizophrenia: a longitudinal magnetic resonance imaging study. *Mol. Psychiatry* **14**, 976–986. <https://doi.org/10.1038/mp.2008.34> (2008).
73. Panizzon, M. S. *et al.* Distinct genetic influences on cortical surface area and cortical thickness. *Cereb. Cortex* **19**, 2728–2735. <https://doi.org/10.1093/cercor/bhp026> (2009).
74. Winkler, A. M. *et al.* Cortical thickness or grey matter volume? The importance of selecting the phenotype for imaging genetics studies. *NeuroImage* **53**, 1135–1146. <https://doi.org/10.1016/j.neuroimage.2009.12.028> (2010).
75. Hutton, C., Draganski, B., Ashburner, J. & Weiskopf, N. A comparison between voxel-based cortical thickness and voxel-based morphometry in normal aging. *NeuroImage* **48**, 371–380. <https://doi.org/10.1016/j.neuroimage.2009.06.043> (2009).
76. Narr, K. L. *et al.* Cortical thinning in cingulate and occipital cortices in first episode schizophrenia. *Biol. Psychiatry* **58**, 32–40. <https://doi.org/10.1016/j.biopsych.2005.03.043> (2005).
77. Voets, N. L. *et al.* Evidence for abnormalities of cortical development in adolescent-onset schizophrenia. *NeuroImage* **43**, 665–675. <https://doi.org/10.1016/j.neuroimage.2008.08.013> (2008).
78. Kong, L. *et al.* Comparison of grey matter volume and thickness for analysing cortical changes in chronic schizophrenia: a matter of surface area, grey/white matter intensity contrast, and curvature. *Psychiatry Res. Neuroimaging* **231**, 176–183. <https://doi.org/10.1016/j.pscychres.2014.12.004> (2015).
79. Seitz, J. *et al.* Tractography analysis of 5 white matter bundles and their clinical and cognitive correlates in early-course schizophrenia. *Schizophr. Bull.* **42**, 762–771. <https://doi.org/10.1093/schbul/sbv171> (2016).
80. Phillips, O. R. *et al.* Fiber tractography reveals disruption of temporal lobe white matter tracts in schizophrenia. *Schizophr. Res.* **107**, 30–38. <https://doi.org/10.1016/j.schres.2008.10.019> (2009).
81. Unger, A., Alm, K. H., Collins, J. A., O'Leary, J. M. & Olson, I. R. Variation in white matter connectivity predicts the ability to remember faces and discriminate their emotions. *J. Int. Neuropsychol. Soc.* **22**, 180–190. <https://doi.org/10.1017/s1355617715001009> (2016).
82. Herbet, G., Zemmoura, I. & Duffau, H. Functional anatomy of the inferior longitudinal fasciculus: from historical reports to current hypotheses. *Front. Neuroanat.* **12**, 77. <https://doi.org/10.3389/fnana.2018.00077> (2018).
83. Alba-Ferrara, L. M. & de Erausquin, G. A. What does anisotropy measure? Insights from increased and decreased anisotropy in selective fiber tracts in schizophrenia. *Front. Integr. Neurosci.* **7**, 9. <https://doi.org/10.3389/fnint.2013.00009> (2013).
84. Stämpfli, P. *et al.* Subtle white matter alterations in schizophrenia identified with a new measure of fiber density. *Sci. Rep.* **9**, 4636. <https://doi.org/10.1038/s41598-019-40070-2> (2019).

Acknowledgements

We would like to thank Dr. Nicholas Dowell and Dr. Samira Bouyagoub for assistance with the NODDI analyses. This work was supported by the Dr. Mortimer and Theresa Sackler Foundation (Grant number 1128926).

Author contributions

E.A.: writing—original draft preparation, formal analysis, methodology, conceptualization; G.D.: writing—original draft preparation, resources, data curation, writing—review and editing; K.G.: resources, data curation, writing—review and editing; S.E.: writing—original draft preparation, formal analysis, methodology, conceptualization.

Competing interests

The authors declare no competing interests.

Additional information

Supplementary information is available for this paper at <https://doi.org/10.1038/s41598-020-73553-8>.

Correspondence and requests for materials should be addressed to S.E.

Reprints and permissions information is available at www.nature.com/reprints.

Publisher's note Springer Nature remains neutral with regard to jurisdictional claims in published maps and institutional affiliations.



Open Access This article is licensed under a Creative Commons Attribution 4.0 International License, which permits use, sharing, adaptation, distribution and reproduction in any medium or format, as long as you give appropriate credit to the original author(s) and the source, provide a link to the Creative Commons licence, and indicate if changes were made. The images or other third party material in this article are included in the article's Creative Commons licence, unless indicated otherwise in a credit line to the material. If material is not included in the article's Creative Commons licence and your intended use is not permitted by statutory regulation or exceeds the permitted use, you will need to obtain permission directly from the copyright holder. To view a copy of this licence, visit <http://creativecommons.org/licenses/by/4.0/>.

© The Author(s) 2020