



Occurrence of Carcinoma of the Pancreas Following Nilotinib Therapy for Chronic Myeloid Leukemia: Report of a Case with Review of the Literature

Kronik Miyeloid Lösemi için Kullanılan Nilotinib Tedavisi Sonrasında Gelişen Pankreas Kanseri: Bir Olgu Sunumu ve Literatür Derlemesi

Yasunobu Sekiguchi¹, Asami Shimada¹, Moe Matsuzawa¹, Hidenori Imai¹, Mutsumi Wakabayashi¹, Keiji Sugimoto¹, Noriko Nakamura², Tomohiro Sawada², Junichi Arita³, Norio Komatsu⁴, Masaaki Noguchi¹

¹Juntendo University Faculty of Medicine, Urayasu Hospital, Clinic of Hematology, Urayasu, Japan

²Juntendo University Faculty of Medicine, Urayasu Hospital, Clinic of Clinical Laboratory, Urayasu, Japan

³The Cancer Institute of the Japanese Foundation for Cancer Research, Gastroenterology Center, Tokyo, Japan

⁴Juntendo University Faculty of Medicine Hospital, Department of Hematology, Tokyo, Japan

Abstract:

The patient, a 79-year-old Japanese man, was diagnosed with the chronic phase of chronic myeloid leukemia and begun on nilotinib therapy in April 2011. The therapeutic response was major molecular response in August. About 19 months after the start of nilotinib therapy at 400 mg/day (November 2012), an adenocarcinoma (24x20 mm) confined to the head of the pancreas developed. In February 2013, a pancreaticoduodenectomy was performed. The therapy regimen was switched to dasatinib at 100 mg/day, beginning in April. The response was still major molecular response with no recurrence of pancreatic carcinoma in July 2013. There have been 29 reported cases of secondary neoplasms associated with nilotinib therapy. These secondary neoplasms were characterized by relatively frequent occurrence of papilloma (6 cases), gastric cancer (3 cases), fibroma (3 cases), and thyroid neoplasms (2 cases). The present case, however, is the first to be reported as carcinoma of the pancreas. This report describes the case.

Key Words: Chronic myeloid leukemia, Nilotinib, Secondary malignancy, Carcinoma of the pancreas

Özet:

Yetmiş dokuz yaşında Japon erkek hastaya, Nisan 2011'de kronik evre kronik miyeloid lösemi tanısı konulup, nilotinib tedavisi başlandı. Ağustos'ta majör moleküler yanıt sağlandı. Nilotinib 400 mg/gün dozunda kullanılırken ve tedavi başlangıcından yaklaşık 19 ay geçmişken (Kasım 2012'de), pankreas başına sınırlı (24x20 mm) adenokanser gelişti. Şubat 2013'te pankreatikoduodenektomi yapıldı. Nisan ayından başlayarak tedavi rejimi olarak dasatinib 100 mg/gün'e geçildi. Temmuz 2013'te yanıt halen majör moleküler yanıtı ve pankreas kanserine ait nüks saptanmadı. Literatürde nilotinib tedavisi ile ilişkili olan 29 ikincil neoplazi tespit edildi. Bu ikincil neoplaziler arasında görece daha sık gözlemlenenler papilloma (6 olgu), mide kanseri (3 olgu), fibroma (3 olgu) ve tiroid neoplazileridir (2 olgu). Olgumuz, literatürde nilotinib altında iken gelişen ilk pankreas kanseri olgusudur. Bu yazıda olgu tartışması ve nilotinibe bağlı gelişen ikincil kanserlere ait literatür taraması sunulmaktadır.

Anahtar Sözcükler: Kronik miyeloid lösemi, Nilotinib, İkincil malinite, Pankreas kanseri

Address for Correspondence: Yasunobu SEKIGUCHI, M.D.,
Juntendo University Faculty of Medicine, Urayasu Hospital, Clinic of Hematology, Urayasu, Japan
Phone: 047-353-3111 E-mail: yasu_sek@juntendo-urayasu.jp

Received/Geliş tarihi : September 20, 2013

Accepted/Kabul tarihi : June 17, 2014

Introduction

Regarding secondary neoplasms (SNs) during imatinib therapy, a previous report described that there was no increase in incidence, while another report stated that an approximately 1.5-fold increase, though not statistically significant, was noted for patients as compared to incidence for a general population [1,2]. It has also been pointed out in a few reports that the incidence of certain types of malignant tumors has increased. An increased incidence has been documented for carcinoma of the prostate; melanoma, carcinoma of the kidney, endocrinoma, and chronic lymphoid leukemia; cancer of the prostate and breast cancer; and non-Hodgkin lymphoma and cancers of the gastrointestinal tract, lungs, and skin [3,4,5,6]. Further, SNs in patients with chronic myeloid leukemia (CML) are complicated and have been described to be probably ascribed to multiple factors [7,8]. Our extensive search of the literature revealed the time to onset of SN after start of nilotinib therapy to be unclear but that after start of imatinib therapy to be about 39 months [4].

There have been no more than a total of 29 cases of SNs associated with nilotinib therapy reported, including the present case [4,6,9,10,11,12]. As second-generation tyrosine kinase inhibitors, including nilotinib, are more potent in immunosuppressive activity than imatinib, their potential risk of SN has been pointed out [4,13]. Long-term follow-up of accumulated cases treated with nilotinib, as is the case with imatinib, is considered necessary.

Pancreatitis occurring during nilotinib therapy was noted with an incidence of 1.9%, being higher as compared to imatinib and dasatinib, and it tended to be more frequent among Japanese patients [10,14,15,16]. Since chronic pancreatitis represents a risk factor for cancer of the pancreas, nilotinib may possibly constitute a risk factor for pancreatic carcinoma [17]. The present case is the first to be reported as pancreatic carcinoma that developed following nilotinib therapy.

Case Presentation

Patient: A Japanese man aged 79, with a chief complaint of increased leukocyte and platelet counts. *Past history:* He had experienced hepatic angioma and lumbar disk herniation, had an operation for acute appendicitis, was operated on for chronic sinusitis, and had been known to be hypertensive with benign prostatic hypertrophy. *Family history, life history, and medication history:* Unremarkable. *Present illness:* The patient had been receiving doxazosin mesylate and tamsulosin hydrochloride since 2003 for hypertension and

benign prostatic hypertrophy at a nearby medical clinic. He was referred to us for medical workup in April 2011 because of increased leukocyte count (12,900/ μ L) and platelet count (69.8x10⁴/ μ L). *Laboratory findings:* See Table 1. The amylase (AMY), carbohydrate antigen 19-9 (CA19-9), s-pancreas-1 antigen (SPAN-1), and pancreatic cancer-associated antigen (DUPAN-2) levels were all within their respective reference ranges. Bone marrow examination revealed a nucleated cell count of 36.0x10⁴/ μ L, a megakaryocyte count of 915/ μ L, 1.4% blasts, and chromosomal aberrations 46,XY, t(9;22) (q34;q11.2). The patient was thus diagnosed with the chronic phase of CML and was begun on nilotinib at 400 mg/day in April 2011 (Figure 1). The dose was reduced to 400 mg/day because the patient was elderly. In August 2011, i.e. 4 months later, the peripheral blood fused gene level became Amp-CML <5 copies/assay, signaling a major molecular response (MMR) [18].

In November 2012, the patient began suffering from postprandial epigastric pain, and the following parameters were noted to be elevated: AMY: 326 IU/L, CA19-9: 38.2 U/mL, SPAN-1: 33 U/mL, and DUPAN-2: >1600 U/mL. A computed tomography (CT) scan disclosed a mass measuring 24x20 mm in the head of the pancreas but there was neither vascular abnormality nor any lymphadenopathy (Figure 2). A diagnosis of adenocarcinoma was made from needle biopsy findings of the mass in the head of the pancreas. Nilotinib was discontinued late in January 2013, and the patient had a pancreaticoduodenectomy elsewhere in the middle of February. The postoperative course was uneventful. Informed consent was obtained.

In March, treatment with nilotinib at 400 mg/day was resumed, at which time the response was still MMR. However, despondency appeared from immediately after reinstatement of nilotinib, which was therefore then switched to dasatinib at 100 mg/day in April. The listless feeling disappeared and the patient progressed favorably with continued oral dasatinib. The response is still MMR and there was no recurrence of cancer of the pancreas as of July 2013.

Discussion and Review of the Literature

Twenty-nine cases of SN have been reported in the literature to our knowledge so far as nilotinib is concerned: 9 cases in global phase III multicenter trials, 2 cases in a Japanese phase II study, 4 cases in an overseas phase II trial, 4 cases reported by Verma et al. (3 patients receiving nilotinib switched from imatinib, and 1 patient on nilotinib as a first-line regimen), 7 cases in postmarketing clinical use surveys in Japan, and the case documented herein (Table 2) [4,9,10,11,12]. The time to onset

Table 1. Laboratory findings upon initial examination in this department.

Peripheral blood	
WBC	12.9x10 ⁹ /L ↑
Myelo	1.5% ↑
Band	2.0%
Seg	77.0% ↑
Ly	9.5% ↓
Eo	4.0%
Ba	6.0% ↑
RBC	5.63x10 ¹² /L ↑
Hb	15.1 g/dL
Ht	49.3% ↑
MCV	87.6%
MCH	26.8% ↓
Plt	698.0x10 ⁹ /L ↑
Ret	1.1%
Biochemistry	
T.P.	7.6 g/dL
Alb	4.3 g/dL
AST	16 IU/L
ALT	15 IU/L
LDH	240 IU/L ↑
ALP	141 IU/L
g-GTP	46 IU/L
T-Bil	0.4 mg/dL
AMY	76 IU/L
BUN	12 mg/dL
Cr	0.73 mg/dL
CRP	<0.3 mg/dL
Ferritin	12.8 ng/mL ↑
Tumor marker	
CA 19-9	24.2 U/mL
SPAN-1	26 U/mL
DUPAN-2	130 U/mL
Bone marrow examination	
Nucleated cell count	36.0x10 ⁴ /μL ↑
Megakaryocyte count	915/μL ↑

Table 1. Continuation

M:E ratio	4.74 ↑
Blasts	1.4% ↑
Myeloid series	
Promyelocytes	11.4% ↑
Myelocytes	14.0%
Metamyelocytes	9.2%
Bandform	28.8% ↑
Segmented	7.0% ↑
Eosino. immature	7.2%
Eosino. mature	2.4%
Baso. immature	1.2% ↑
Lymphocytes	1.4% ↓
Plasma cells	0.2%
Megakaryocytes	0.4% ↑
Erythroid series	
Proerythroblasts	0.6%
Basophilic	1.4%
Polychromatic	13.2%
Mitotic figures	0.2%
Whole blood major bcr-abl mRNA (TMA)-L	>626 copies/assay ↑
Bone marrow chromosomes (G-band)	
46,XY, t(9;22) (q34;q11.2)	19 cells/20 cells ↑
46,XY	1 cell/20 cells

WBC: White blood cells, Myelo: myelocytes, Seg: segmentation, Ly: lymphocytes, Eo: eosinocytes, Ba: basocytes, RBC: red blood cells, Hb: hemoglobin, Ht: hematocrit, MCV: mean corpuscular volume, MCH: mean corpuscular hemoglobin, Plt: platelets, Ret: reticulocytes, T.P.: total protein, Alb: albumin, AST: aspartate aminotransferase, ALT: alanine aminotransferase, LDH: lactate dehydrogenase, ALP: alkaline phosphatase, g-GTP: g-guanosine triphosphate, T-Bil: total bilirubin, BUN: blood urea nitrogen, Cr: creatinine, CRP: C-reactive protein, M:E ratio: myeloid:erythroid ratio, mRNA: messenger ribonucleic acid, TMA: transcription mediated amplification.

of SN after initiation of nilotinib therapy was unclear. Of the SNs reported, papilloma in 6 cases, gastric cancer in 3 cases, fibroma in 3 cases, and thyroid neoplasms in 2 cases were relatively common, while the present case is the first to be reported as carcinoma of the pancreas. Nilotinib was given as an up-front treatment in some instances or as a second-line treatment in others. Therefore, the impact of these differences, if any, on the occurrence of secondary neoplasms remains uncertain.

Table 2. Reported secondary neoplasms associated with nilotinib therapy.

Reference	Neoplasm	Reference Number
Global phase III multicenter trials	Papilloma of the skin: 3 Fibroma molle: 2 Cholesteatoma: 1 Gastric cancer: 1 Papilloma of the oral cavity: 1 Thyroid neoplasm: 1	9
Japanese phase II study	Phagocytic histiocytosis: 1 Seborrheic keratosis: 1	10
Overseas phase II study	Papilloma of the skin: 2 Lipoma: 1 Thyroid neoplasm: 1	11
Duman et al.	Lung cancer: 1 Fibroma of the skin: 1	6
Verma et al.	Malignant tumor: 4	4
Postmarketing clinical use surveys in Japan	Gastric cancer: 2 Cancer of the bladder: 1 Esophageal cancer: 1 Ureteral cancer: 1 Neoplastic progression: 1	12
Present case	Cancer of the pancreas: 1	

It was also reported that an increase in the incidence of the following neoplastic changes was noted in a rat 2-year carcinogenicity study of imatinib: adenoma/adenocarcinoma of the kidney, urinary tract papilloma, adenocarcinoma of the small intestine, adenoma of the parathyroid, adrenal benign and malignant medullary tumors, papilloma/squamous cell carcinoma of the forestomach, papilloma of the clitoral gland, squamous cell carcinoma of the preputial gland, and papilloma of the preputial gland [15]. In a 2-year carcinogenicity study of dasatinib in rats, the incidence of papilloma and squamous cell carcinoma of the uterus and adenoma and adenocarcinoma of the prostate was observed to be increased at dose levels equal to or even lower than a clinical exposure level [16]. Thus, the potential risk of secondary malignancies cannot be ruled out for nilotinib, although there are no animal experimental data available at present. Verification by animal experiment would be needed. Inasmuch as nilotinib and dasatinib have greater immunosuppressive potency than imatinib, there has been a report pointing out the risk of SNs; therefore, long-term follow-up of accumulated cases treated with nilotinib, as is the case with imatinib, is considered necessary [4,13].

Pancreatitis occurring during nilotinib therapy was reported in 1.9% of patients, and this incidence rate is higher as compared to less than 1% for imatinib, while it is unknown for dasatinib [14,15,16]. It is assumed that nilotinib acts upon an unknown intracellular pathway involved in calcium release from pancreatic acini, thereby regulating pancreatic exocrine

Table 3. Reports of pancreatitis, pancreatic enzyme elevation, and secondary malignancies associated with nilotinib therapy.

	Global Phase III Multicenter Trials	Overseas Phase II Study	Japanese Phase II Study	Postmarketing Clinical Use Surveys in Japan
Nilotinib prescribed for:	Newly diagnosed chronic phase of CML	Imatinib-refractory CML	Imatinib-refractory CML	Imatinib-refractory or newly diagnosed CML
Nationality	Non-Japanese	Non-Japanese	Japanese	Japanese
Total no. of pts., n	556	458	34	n.a.
Pancreatitis, n (%)	6 (1.1%)	5 (1.1%)	-	2 (n.a.)
Acute pancreatitis, n (%)	4 (0.7%)	-	1 (2.9%)	6 (n.a.)
Lipase elevation, n (%)	46 (8.3%)	59 (12.9%)	8 (23.5%)	131 (n.a.)
Amylase elevation, n (%)	32 (5.8%)	22 (4.8%)	1 (2.9%)	28 (n.a.)
Secondary malignancies, n (%)	9 (1.6%)	4 (0.9%)	2 (5.9%)	7 (n.a.)
Reference number	9	11	10	12

CML: Chronic myeloid leukemia, n.a.: not available.

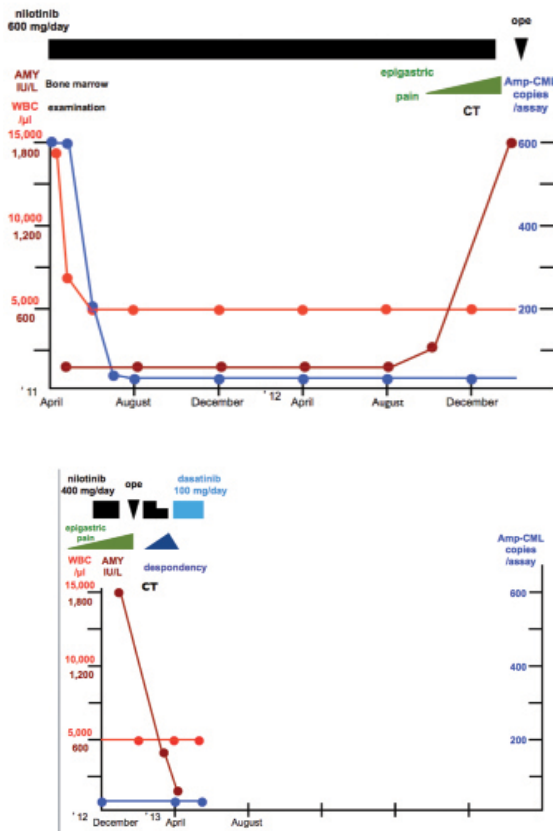


Figure 1. Clinical course: A diagnosis of chronic phase of chronic myeloid leukemia was made and the patient was begun on nilotinib at 400 mg/day. He obtained major molecular response. He began suffering from postprandial epigastric pain and a computed tomography scan revealed a tumor mass in the head of the pancreas. The mass was diagnosed as an adenocarcinoma. Nilotinib was discontinued and a pancreaticoduodenectomy was performed. Nilotinib at 400 mg/day was reinstated, but this was switched to dasatinib at 100 mg/day when dependency appeared. The listless feeling then disappeared and the response is still major molecular response with no indication of pancreatic cancer recurrence.

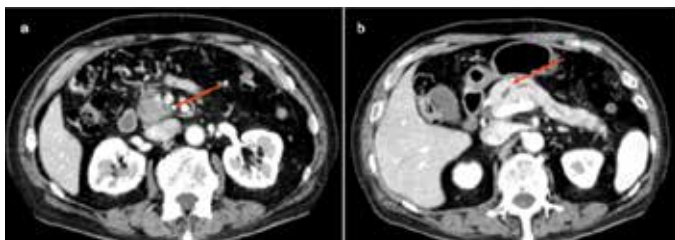


Figure 2. Computed tomography scans of the abdomen: (a) A 24x20-mm tumor mass was noted in the head of the pancreas (red arrow). (b) The main pancreatic duct was dilated, but there was neither vascular abnormality nor lymph node swelling (red arrow).

secretion, and inhibits acinar opening/exocrine secretion by facilitating fatty acid deposition in pancreatic acinar cells, yet the underlying details remain to be clarified [19]. Thus, there is the possibility that nilotinib may be a risk factor for pancreatitis. Increased plasma lipase level was noted in 23.5% of patients treated in a Japanese phase II study, this incidence being particularly high as compared to 8.3% in global phase III multicenter trials and 12.9% in an overseas phase II trial (Table 3) [9,10,11]. There may be an interracial difference in this respect. Because chronic pancreatitis represents a risk factor for cancer of the pancreas, the possibility that nilotinib eventually may constitute a risk factor for pancreatic carcinoma and that Japanese race may also be a risk factor cannot be negated [17]. The patient reported herein had no history of pancreatitis. The present case is the first to be documented as carcinoma of the pancreas that developed following nilotinib therapy. Long-term outcome data analysis based on careful follow-up observation including periodic pancreatic enzyme checkups and by-race classification of study population is considered to be needed.

Conflict of Interest Statement

The authors of this paper have no conflicts of interest, including specific financial interests, relationships, and/or affiliations relevant to the subject matter or materials included.

References

1. Pilot PR, Sablinska K, Owen S, Hatfield A. Epidemiological analysis of second primary malignancies in more than 9500 patients treated with imatinib. *Leukemia* 2006;20:148-149.
2. Voglova J, Muzik J, Faber E, Zackova D, Klamova H, Steinerova K, Michalovicova Z, Demitrovicova L, Cmunt E, Novakova L, Tothova E, Belohlavkova P, Mayer J, Indrak K. Incidence of second malignancies during treatment of chronic myeloid leukemia with tyrosine kinase inhibitors in the Czech Republic and Slovakia. *Neoplasma* 2011;58:256-262.
3. Roy L, Guilhot J, Martineau G, Larchée R, Guilhot F. Unexpected occurrence of second malignancies in patients treated with interferon followed by imatinib mesylate for chronic myelogenous leukemia. *Leukemia* 2005;19:1689-1692.
4. Verma D, Kantarjian H, Strom SS, Rios MB, Jabbour E, Quintas-Cardama A, Verstovsek S, Ravandi F, O'Brien S, Cortes J. Malignancies occurring during therapy with tyrosine kinase inhibitors (TKIs) for chronic myeloid leukemia (CML) and other hematologic malignancies. *Blood* 2011;118:4353-4358.
5. Gambacorti-Passerini C, Antolini L, Mahon FX, Guilhot F, Deininger M, Fava C, Nagler A, Della Casa CM, Morra E, Abruzzese E, D'Emilio A, Stagno F, le Coutre P, Hurtado-Monroy R, Santini V, Martino B, Pane F, Piccin A, Giraldo P, Assouline S, Durosini MA, Leeksa O, Pogliani EM, Puttini M, Jang E, Reiffers J, Valsecchi MG, Kim DW. Multicenter

- independent assessment of outcomes in chronic myeloid leukemia patients treated with imatinib. *J Natl Cancer Inst* 2011;103:553-561.
6. Duman BB, Paydas S, Disel U, Besen A, Gurkan E. Secondary malignancy after imatinib therapy: eight cases and review of the literature. *Leuk Lymphoma* 2012;53:1706-1708.
 7. Stein BL. Chronic myeloid leukemia and risk of second malignancy in two eras of treatment. *Leuk Lymphoma* 2012;53:1651-1653.
 8. Rebora P, Czene K, Antolini L, Gambacorti Passerini C, Reilly M, Valsecchi MG. Are chronic myeloid leukemia patients more at risk for second malignancies? A population-based study. *Am J Epidemiol* 2010;172:1028-1033.
 9. Kantarjian HM, Hochhaus A, Saglio G, De Souza C, Flinn IW, Stenke L, Goh YT, Rosti G, Nakamae H, Gallagher NJ, Hoenekopp A, Blakesley RE, Larson RA, Hughes TP. Nilotinib versus imatinib for the treatment of patients with newly diagnosed chronic phase, Philadelphia chromosome-positive, chronic myeloid leukaemia: 24-month minimum follow-up of the phase 3 randomised ENESTnd trial. *Lancet Oncol* 2011;12:841-851.
 10. Novartis Pharmaceuticals Japan [Internet]. Prescribing Information. Tokyo, Tasigna [updated June 2013; cited 1 July 2013]. Available from http://product.novartis.co.jp/tas/tg/tg_tas_1306.pdf (in Japanese).
 11. Kantarjian HM, Giles FJ, Bhatta KN, Pinilla-Ibarz J, Larson RA, Gattermann N, Ottmann OG, Hochhaus A, Radich JP, Saglio G, Hughes TP, Martinelli G, Kim DW, Shou Y, Gallagher NJ, Blakesley R, Baccarani M, Cortes J, le Coutre PD. Nilotinib is effective in patients with chronic myeloid leukemia in chronic phase after imatinib resistance or intolerance: 24-month follow-up results. *Blood* 2011;117:1141-1145.
 12. Novartis Pharmaceuticals Japan [Internet]. Prescribing Information. Tokyo, Tasigna [updated June 2013; cited 1 July 2013]. Available from http://product.novartis.co.jp/tas/ts/pms_tas_shibo_20130628.pdf (in Japanese).
 13. Weisberg E, Manley PW, Breitenstein W, Brügger J, Cowan-Jacob SW, Ray A, Huntly B, Fabbro D, Fendrich G, Hall-Meyers E, Kung AL, Mestan J, Daley GQ, Callahan L, Catley L, Cavazza C, Azam M, Neuberg D, Wright RD, Gilliland DG, Griffin JD. Characterization of AMN107, a selective inhibitor of native and mutant Bcr-Abl. *Cancer Cell* 2005;7:129-141.
 14. Novartis Pharmaceuticals Japan [Internet]. Prescribing Information. Tokyo, Tasigna [updated April 2013; cited 1 July 2013]. Available from http://product.novartis.co.jp/tas/pi/pi_tas_201304.pdf (in Japanese).
 15. Novartis Pharmaceuticals Japan [Internet]. Prescribing Information. Tokyo, Gleevec [updated October 2012; cited 1 July 2013]. Available from <http://product.novartis.co.jp/gli/pi/GLI1210.pdf> (in Japanese).
 16. Pharmaceutical and Medical Devices Agency [Internet]. Sprycel; Prescribing Information. Tokyo, Bristol-Myers Squibb [updated June 2013; cited 1 July 2013]. Available from http://www.info.pmda.go.jp/go/pack/4291020F1027_1_08/ (in Japanese).
 17. Lowenfels AB, Maisonneuve P, Cavallini G, Ammann RW, Lankisch PG, Andersen JR, Dimagno EP, Andrén-Sandberg A, Domellöf L. Pancreatitis and the risk of pancreatic cancer. International Pancreatitis Study Group. *N Engl J Med* 1993;328:1433-1437.
 18. Yagasaki F, Niwa T, Abe A, Ishikawa M, Kato C, Ogura K, Sasaki H, Kyo T, Jinnai I, Bessyo M, Miyamura K. Correlation of quantification of major bcr-abl mRNA between TMA (transcription mediated amplification) method and real-time quantitative PCR. *Rinsho Ketsueki* 2009;50:481-487.
 19. Rosti G, Castagnetti F, Gugliotta G, Palandri F, Baccarani M. Physician's guide to the clinical management of adverse events on nilotinib therapy for the treatment of CML. *Cancer Treat Rev* 2012;38:241-248.