

Integrated Assessment of Heavy Metal Contamination in Sediments from a Coastal Industrial Basin, NE China

Xiaoyu Li^{1,2}, Lijuan Liu¹, Yugang Wang¹, Geping Luo¹, Xi Chen¹, Xiaoliang Yang³, Bin Gao⁴, Xingyuan He^{2*}

1 State Key Laboratory of Desert and Oasis Ecology, Xinjiang Institute of Ecology and Geography, Chinese Academy of Sciences, Xinjiang, China, **2** State Key Laboratory of Forest and Soil Ecology, Institute of Applied Ecology, Chinese Academy of Sciences, Liaoning, China, **3** College of Environmental Science and Forestry, State University of New York, Syracuse, New York, United States of America, **4** College of Resources Science and Technology, Beijing Normal University, Beijing, China

Abstract

The purpose of this study is to investigate the current status of metal pollution of the sediments from urban-stream, estuary and Jinzhou Bay of the coastal industrial city, NE China. Forty surface sediment samples from river, estuary and bay and one sediment core from Jinzhou bay were collected and analyzed for heavy metal concentrations of Cu, Zn, Pb, Cd, Ni and Mn. The data reveals that there was a remarkable change in the contents of heavy metals among the sampling sediments, and all the mean values of heavy metal concentration were higher than the national guideline values of marine sediment quality of China (GB 18668-2002). This is one of the most polluted of the world's impacted coastal systems. Both the correlation analyses and geostatistical analyses showed that Cu, Zn, Pb and Cd have a very similar spatial pattern and come from the industrial activities, and the concentration of Mn mainly caused by natural factors. The estuary is the most polluted area with extremely high potential ecological risk; however the contamination decreased with distance seaward of the river estuary. This study clearly highlights the urgent need to make great efforts to control the industrial emission and the exceptionally severe heavy metal pollution in the coastal area, and the immediate measures should be carried out to minimize the rate of contamination, and extent of future pollution problems.

Citation: Li X, Liu L, Wang Y, Luo G, Chen X, et al. (2012) Integrated Assessment of Heavy Metal Contamination in Sediments from a Coastal Industrial Basin, NE China. PLoS ONE 7(6): e39690. doi:10.1371/journal.pone.0039690

Editor: Jack Anthony Gilbert, Argonne National Laboratory, United States of America

Received: January 9, 2012; **Accepted:** May 29, 2012; **Published:** June 29, 2012

Copyright: © 2012 Li et al. This is an open-access article distributed under the terms of the Creative Commons Attribution License, which permits unrestricted use, distribution, and reproduction in any medium, provided the original author and source are credited.

Funding: This study was financed by National Natural Science Foundation of China (No. 40830746 and 40971272). The funders had no role in study design, data collection and analysis, decision to publish, or preparation of the manuscript.

Competing Interests: The authors have declared that no competing interests exist.

* E-mail: hexy@iae.ac.cn

Introduction

Coastal and estuarine areas are among the most important places for human inhabitants [1]; however, with rapid urbanization and industrialization, heavy metals are continuously carried to the estuarine and coastal sediments from upstream of tributaries [2–5]. Heavy metal contamination in sediment could affect the water quality and bioaccumulation of metals in aquatic organisms, resulting in potential long-term implication on human health and ecosystem [6–7]. In most circumstances, the major part of the anthropogenic metal load in the sea and seabed sediments has a terrestrial source, from mining and industrial developments along major rivers and estuaries [8–10]. The hot spots of heavy metal concentration are often near industrial plants [11]. Heavy metal emissions have been declining in some industrialized countries over the last few decades [12,13], however, anthropogenic sources have been increasing with rapid industrialization and urbanization in developing countries [14,15]. Heavy metal contaminations in sediment could affect the water quality, the bioassimilation and bioaccumulation of metals in aquatic organisms, resulting in potential long-term effects on human health and ecosystem [16–19]. Quantification of the land-derived metal fluxes to the sea is therefore a key factor to ascertain at which extent those inputs can influence the natural biogeochemical processes of the elements in the marine [20,21]. The spatial distribution of heavy metals in

marine sediments is of major importance in determining the pollution history of aquatic systems [22,23], and is basic information for identifying the possible sources of contamination and to delineate the areas where its concentration exceeds the threshold values and the strategies of site remediation [24]. Therefore, understanding the mechanisms of accumulation and geochemical distribution of heavy metals in sediments is crucial for the management of coastal environment.

China's rapid growth of the economy since 1979 under the reform policies has been accompanied by considerable environmental side effects [25]. China is one of the largest coastal countries in the world. Booming coastal urban areas are increasingly dumping huge industrial and domestic waste at sea [26]. The elevated metal discharges put strong pressure on China's coastal and estuarine area. The average annual input of metals by major rivers was approximately 30,000 t between 2002 and 2008 [27]. Chinese government indicates that 29,720 km² of offshore areas of China are heavily polluted [28]. "Hot spots" of metal contamination can be found along the coast of China [29], from the north to the south, especially in the industry-developed estuaries, such as the Liaodong Bay [30] and Yangtze River catchment [31] and Xiamen Bay [32]. In 2002, China enforced Marine Sediment Quality (GB 18668-2002) to protect marine environment (CSBTS, 2002). Therefore, Marine Sediment Qual-

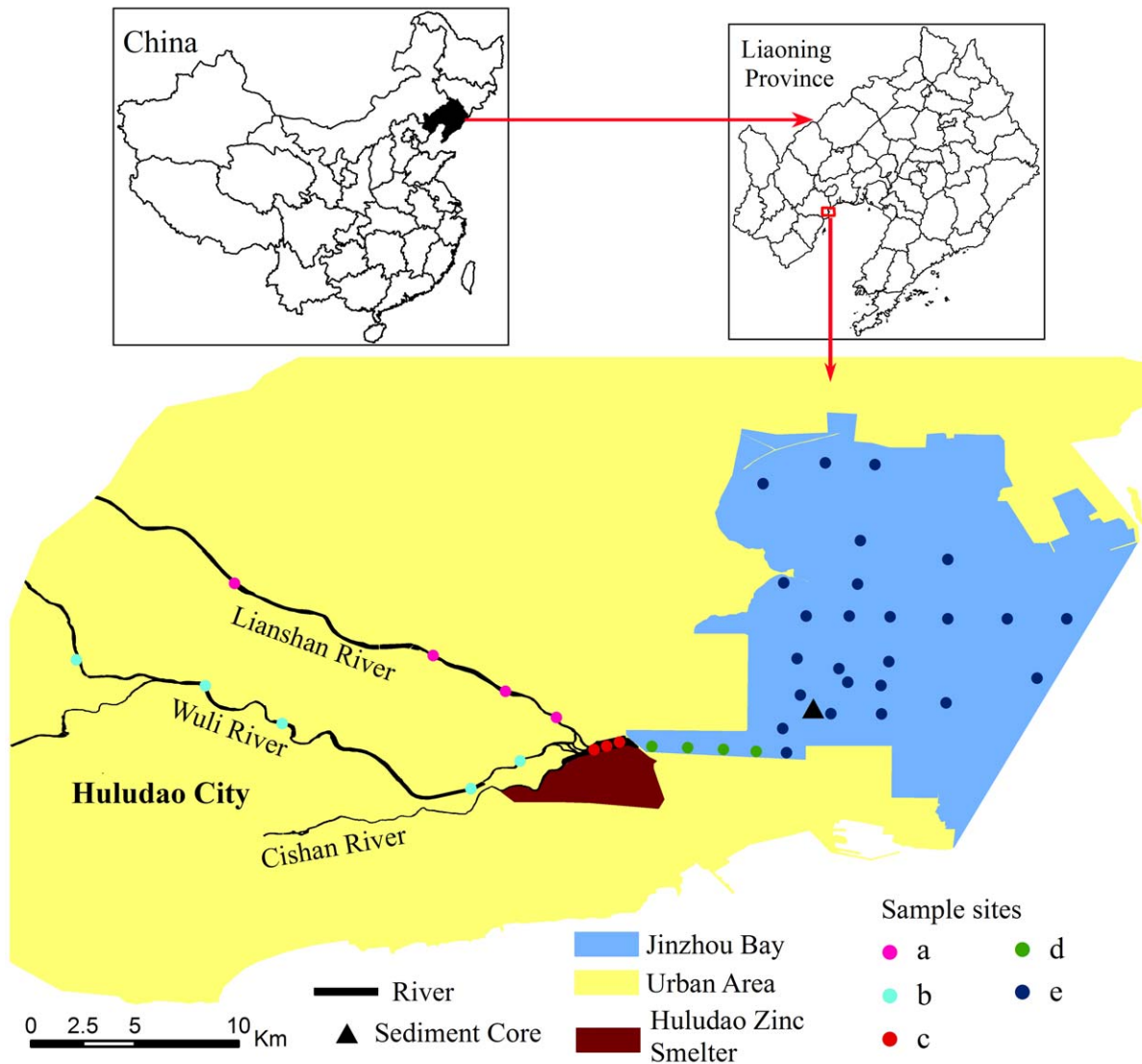


Figure 1. The sampling sites in the study area. (a, Lianshan River upstream of Huludao Zinc Smelter (n=4); b, Wuli River upstream of Huludao Zinc Smelter (n=5); c, Converged river Downstream of Huludao Zinc Smelter (n=3); d, Estuary (n=4); e, Jinzhou Bay (n=25)).
doi:10.1371/journal.pone.0039690.g001

ity (GB 18668-2002) is used as a general measure of marine sediment contamination in China.

Jinzhou Bay, surrounded by highly industrialized regions, is considered as one of the most contaminated coastal areas in China [33]. China produces the largest amount of zinc (Zn) in the world, which was 1.95 million tons in 2000 and will grow to 14.9 million tons in 2010 [26,34]. And the largest zinc smelting plant in Asia was located at the coast of Jinzhou bay. From 1951 to 1980, the amount of Zn, Cu, Pb and Cd discharged from Huludao Zinc Smelter to Jinzhou bay reached 33745, 3689, 3525 and 1433 t respectively [35]. Although several heavy metal contamination studies have conducted in Jinzhou Bay area recently, these studies were focused on coastal urban soils [36], river sediments [37] and seawater [38] separately. Few researches take the coastal stream, estuary and bay as a whole unit to assess the heavy metal contamination of coastal industrial area spatially and temporally. Thus, it is necessary to understand the process of heavy metal contamination and to evaluate the potential ecological risks of heavy metals in the coastal stream, estuary and bay integratively.

In recent decades different metal assessment indices applied to sediment environments have been developed. Caeiro et al [9] classified them in three types: contamination indices, background enrichment indices and ecological risk indices. The geo-accumulation index (I_{geo}) [39] and the potential ecological risk index (RI) [40] are the most popular methods used to evaluate the ecological risk posed by heavy metals in sediments [41–44]. RI method considers the toxic-response of a given substance and the total risk index, and can exhibit the actual pollution condition of seriously polluted sediment [45,46].

Over the last few decades the study of the sediment cores has shown to be an excellent tool for establishing the effects of anthropogenic and natural processes on depositional environments [44,47]. Sediment cores can be used to study the pollution history of aquatic ecosystem [48,49]. Within an individual sediment core, differences in pollutant concentrations at different depths reflect how heavy metal input and accumulation changes over time [50,51].

The purpose of this study is (1) to quantify and explain the spatial distribution of heavy metal contaminants in modern sediments of Jinzhou bay, NE China; (2) to investigate the natural and anthropogenic processes controlling sediment chemistry; and (3) to identify the potential ecological risks of such heavy metals.

Materials and Methods

Study Area

This study was carried out in Jinzhou Bay and its coastal city, Huludao City, in Liaoning Province, northeast of China (Fig. 1). Jinzhou Bay is one of the important bays in the northwest of Liaodong Bay at the northwestern bank of China's Bohai Sea. It is a semi-closed shallow area with an average depth of 3.5 m and an approximate area of 120 km². Huludao city is located at southwestern coast of Jinzhou bay. The city is an important non-ferrous smelting and chemical industry area in northeast China. More than forty different mineral resources have been discovered in the Huludao region, including gold, zinc, molybdenum, lime and manganese. The economy is dominated by some of China's most important industrial enterprises, such as Asia's biggest zinc manufacturing operation, the Huludao Zinc Smelter (HZS), the Jinxi Oil Refinery and Jinhua Chemical Engineering, and Huludao's Massive Shipyard. The Wuli River, Lianshan River and the Cishan River are three main rivers in the city, flowing into Jinzhou Bay. The water, soil and sediment in the city and Jinzhou bay were heavily polluted by industrial activities. Land reclamation from sea by landfill of soils and solid wastes further increase the level of pollution of the sedimentary environments in this area. These anthropogenic activities have created great threat to the public health and the regional biological and geochemical conditions.

No specific permits were required for the described field studies. The studying area is not privately-owned or protected in any way and the field studies did not involve endangered or protected species.

Sampling and Analysis

Twelve samples of river sediment were collected from the two major rivers (Lianshan river and Wuli river) and four samples were collected from their estuary of Huludao City, using a stainless steel shovel. Twenty-five of surface sediments (0–5 cm) and one sediment core were collected in Jinzhou Bay using a stainless gravity corer (40 cm length and 5 cm diameter). The sediment core was sectioned at 2 cm intervals, and each fraction (subsamples) was sliced into 50 ml polyethylene centrifuge tubes with the help of PVC spatula. All the samples were collected in October 2009 in one week.

The samples were oven-dried at 45°C for 3 days, and sieved through a 2-mm plastic sieve to remove large debris, gravel-size materials, plant roots and other waste materials, and stored in closed plastic bags until analysis. Soil was digested with a mixture 5:2:3 of HNO₃–HClO₄–HF. The digested solutions were analyzed via an inductively coupled plasma-atomic emission spectroscopy (ICP-AES; Perkin Elmer Optima 3300 DV). All of the soil samples were analyzed for total concentrations of Cu, Zn, Pb, Ni, Mn and Cd.

Statistical Analysis

Statistical methods were applied to process the analytical data in terms of its distribution and correlation among the studied parameters. The commercial statistics software package SPSS version 17.0 for Windows was used for statistical analyses in present study. Basic statistical parameters such as mean, median,

standard deviation (SD), coefficient of variation (CV), skewness and kurtosis were computed. To identify the relationship among heavy metals in sediments and their possible sources, Pearson's correlation coefficient analysis were performed.

Geostatistical Methods

Semivariogram is a basic tool of geostatistics and also the mathematical expectation of the square of regional variable $z(x_i)$ and $z(x+h_i)$ increment, namely the variance of regional variable. Its general form is:

$$\gamma(h) = \frac{1}{2N(h)} \sum_{i=1}^{N(h)} [z(x_i) - z(x_i + h)]^2$$

where $\gamma(h)$ is semivariogram; h is step length, namely the spatial interval of sampling points used for the classification to decrease the individual number of spatial distance of various sampling point assemblages; $N(h)$ is the logarithm of sampling point when the spacing is h ; $z(x_i)$ and $z(x_i+h)$ are the values when the variable Z is at the x_i and x_i+h positions respectively. The residual sums of squares (RSS), the determining coefficient (R^2) and F test were used to evaluate the accuracy of the interpolated results.

Kriging, as a geostatistical interpolation method, uses the semivariogram to quantify the spatial variability of regionalized variables, and provides parameters for spatial interpolation. The maps of spatial distribution of heavy metal concentrations were generated by Kriging interpolation with the support of the statistical module of ArcGIS-Geostatistical Analyst.

Potential Ecological Risk

To assess the effect of multiple metal pollutions in the sediments from the river, estuary and Jinzhou bay, potential ecological Risk Index (RI) was used, which was originally developed by Håkanson [40] and is widely used in ecological risk assessments of heavy metals in sediments. According to this methodology, the potential ecological risk index (RI) is defined as

$$RI = \sum Er^i \quad (1)$$

$$Er^i = Tr^i \cdot C_f^i \quad (2)$$

$$C_f^i = C_o^i / C_n^i \quad (3)$$

where RI is calculated as the sum of all risk factors for heavy metals in sediments; Er^i is the monomial potential ecological risk factor; TR^i is the toxic-response factor for a given substance (e.g., Cu = Pb = Ni = 5, Zn = 1, Cd = 30); C_f^i , C_o^i and C_n^i are the contamination factor, the concentration of metals in the sediment and the background reference level, respectively. The background values of Cu, Zn, Pb and Cd are defined as the maximum values of the first category standard of national guideline values of marine sediment quality of China (GB18668-2002) and Ni is defined as the average value of Ni in residual fraction determined, they were 35 mg/kg for Cu, 150 mg/kg for Zn, 60 mg/kg for Pb, 0.5 mg/kg for Cd, and 9 mg/kg for Ni. The concentration of Mn in the sediments showed very weak relationship with the industrial activities, so it was not included in the calculation process of RI.

Still according to Hakanson [40] the following terminology is indicated to be used for the RI value:

RI <150, low ecological risk for the sediment;
 150 ≤ RI <300, moderate ecological risk for the sediment;
 300 ≤ RI <600, considerable ecological risk for sediment;
 RI ≥600, very high ecological risk for the sediment.

Results and Discussion

Heavy Metal in the Sediments

Descriptive statistics of heavy metal concentrations of sediments present in rivers of Huludao city, estuary and Jinzhou bay (Fig. 1) are presented in Table 1, 2, 3. As confirmed by the skewness values (Table 1, 3), the concentrations of elements (except Mn) are characterized by large variability, with positively skewed frequency distributions. This is common for heavy metals, because they usually have low concentrations in the environment, so that the presence of a point source of contamination may cause a sharp increase in local concentration, exceeding the thresholds [24].

Heavy metal in river sediments. Among the concentrations of heavy metal of river sediments (Table 1), the low values are from the sediments sampled before the river flowing by the Huludao Zinc Smelter (HZS), and the highest heavy metal concentrations come from the two sediment samples collected after the river flows by the HZS and accepted the wastewater discharged from HZS. Although the Wuli river is the least contaminated river in Huludao City; however the concentration of Cd exceeded the national guideline values of marine sediment quality of China (GB 18668-2002) by 22 times. In the upstream of HZS the sediment contamination of Lianshan river was higher than that of Wuli river. These data showed many other industrial operations at upper reaches of HZS also contributed great heavy

metals to the river sediments. According to historical data, wastes from Jinxi Chemical Factory and Jinxi Petroleum Chemical Factory were discharged into Wuli River directly for nearly 40 years till 2000 and caused heavy contamination of river sediments. At the same time, wastewater from other small industrial plants and residents, and nonpoint pollution from soils with runoff or atmospheric deposition contributed additional pollution sources [52,53]. This is confirmed by the previous studies about contamination of urban soils [36,54] and river sediments [37] in Huludao city.

The mean concentrations of Cu, Zn, Pb and Cd in the sediment of converged river downstream of HZS adjacent to the estuary exceeding the national guideline values of marine sediment quality of China (GB 18668-2002) by 42, 42, 40 and 1006 times respectively. These indicated that the Huludao Zinc Smelter (HZS) is the largest source of heavy metals in river sediment adjacent to the estuary. The annual amount of discharged wastewater from HZS is estimated to be more than 8 million tons directly to the Wuli river [35]. This situation lasted for more than 50 years till the water reuse was realized around year 2000 [28].

Heavy metal in the estuary sediments. Four sediment samples were collected along the estuary, and the distance from HZS to the sampling sites increases from 400 m with an 800 m interval to the Jinzhou Bay (Fig. 1). All the investigated heavy metals clearly showed the same distribution trend. The maximum concentrations of heavy metals declined as the distance increased from HZS (Table 2). The mean concentration of Cu, Zn, Pb and Cd at estuary were exceeded the national guideline values of marine sediment quality of China (GB 18668-2002) by 24, 31, 11 and 332 times respectively.

Table 1. Heavy metal concentrations (mg/kg) of River sediments.

		Minimum	Maximum	Mean	Median	SD	CV%	Skewness	Kurtosis	national guideline values
Cu	a	67.00	186.50	116.50	106.25	50.22	43.11	1.15	2.24	
	b	32.15	85.50	50.61	42.40	24.55	48.51	1.45	1.73	35.00
	c	795.00	2535.00	1533.33	1270.00	899.39	58.66	1.20	–	
Zn	a	471.61	965.31	633.85	549.24	224.08	35.35	1.83	3.51	
	b	153.52	473.93	256.78	199.85	146.71	57.13	1.84	3.50	150.00
	c	1825.96	11010.02	6546.57	6803.73	4597.42	70.23	-251	–	
Pb	a	62.64	185.10	112.28	100.69	52.34	46.62	1.18	1.76	
	b	40.15	98.47	57.60	45.89	27.47	47.69	1.90	3.66	60.00
	c	417.58	6090.90	2431.09	784.81	3174.79	130.59	1.70	–	
Ni	a	35.69	109.99	57.41	41.98	35.23	61.36	1.94	3.79	
	b	28.28	35.94	31.49	30.885	3.31	10.51	0.92	0.52	–
	c	40.77	87.93	62.58	59.06	23.77	37.98	0.65	–	
Mn	a	520.89	1283.46	812.91	723.65	327.98	40.34	1.47	2.75	
	b	520.21	903.43	710.96	710.11	205.78	28.94	0.004	–5.81	–
	c	337.93	1358.55	915.18	1049.07	523.31	57.18	–1.08	–	
Cd	a	25.53	98.78	53.18	44.21	32.61	61.32	1.29	1.30	
	b	8.04	17.75	11.12	9.35	4.49	40.38	1.81	3.29	0.50
	c	136.73	1019.10	503.51	354.71	459.62	91.28	1.30	–	

^aLianshan River upstream of Huludao Zinc Smelter (n = 4);

^bWuli River upstream of Huludao Zinc Smelter (n = 5);

^cConverged river Downstream of Huludao Zinc Smelter (n = 3). The locations of sampling sites are on Fig. 1.

doi:10.1371/journal.pone.0039690.t001

Table 2. Heavy metal concentrations (mg/kg) of Estuary sediments.

Distance from HZS to the sampling sites	Cu	Zn	Pb	Ni	Mn	Cd
400 m	1510.00	9304.24	1414.14	59.95	744.13	269.34
1200 m	805.00	3898.09	561.21	64.10	677.46	181.90
2000 m	675.00	2750.57	486.43	48.14	514.07	118.08
2800 m	505.00	3221.59	421.28	53.85	682.69	98.29

The locations of sampling sites are on Fig. 1.
doi:10.1371/journal.pone.0039690.t002

Contaminant distributions in the Hudson River estuary were identified two types of trends: increasing trend down-estuary dominated by down-estuary sources such as wastewater effluent, and decreasing trend toward bay dominated by upriver sources, where they are removed and diluted downstream along with the sediment transport [55]. The result of this study showed obvious decreasing trend toward bay. This confirmed that the wastewater discharged from HZS and other industrial plants were the main sources of heavy metals in sediment.

Heavy metal in Jinzhou Bay sediments. Twenty-five of surface sediments from Jinzhou Bay were tested and the minimum, maximum and mean values are all located in Table 3. There were remarkable changes in the concentrations of heavy metals in the sediments of Jinzhou bay (Fig. 1). The heavy metal concentration levels are comparable to those with previous studies [56–58], especially for Cu, Pb and Zn. Mean concentrations of Cu, Zn, Pb and Cd were as high as 2.1, 4.6, 2.1 and 53.6 times of the national guideline values of marine sediment quality of China (GB 18668-2002). According to the research results from Institute of Marine Environmental protection, State oceanic Administration of China in 1984, the background value of Cu, Zn, Pb and Cd in Jinzhou bay was 10.0, 48.59, 9.0 and 0.29 mg/kg respectively [35]. This clearly demonstrates an anthropogenic contribution and reveals a serious pollution of sediments in Jinzhou bay. For all metals, total concentrations had a great degree of variability, shown by the large coefficients of variation (CV) from 20.49% of Mn to 92.51% of Pb. The elevated coefficients of variations reflected the inhomogeneous distribution of concentrations of discharged heavy metals. Large standard deviations were found in all heavy metals levels. The results of the K–S test ($P < 0.05$) showed that the concentrations of measured metals were all normally distributed.

The comparison of contaminant concentrations observed in this study with those reported for other regions (Table 4) indicates that levels and ranges of variation of our data are

similar to those reported from sites with high anthropogenic impact. It was found that the concentrations of Cd measured in this study were greatly higher than other studies except that of Algeciras Bay was a little close to this study. The levels of Zn and Pd in this study were only lower than that of Izmit Bay and Gulf of Naples respectively. The contents of Cu were relatively higher than other study (except Izmit Bay, Bay of Bengal and Hong Kong). All these show that Jinzhou bay was a highly polluted area in the world.

Correlation between Heavy Metals

Correlation analyses have been widely applied in environmental studies. They provided an effective way to reveal the relationships between multiple variables in order to understand the factors as well as sources of chemical components [50,65]. Heavy metals in environment usually have complicated relationships among them. The high correlations between heavy metals may reflect that the accumulation concentrations of these heavy metals came from similar pollution sources [66,67]. Results of Pearson's correlation coefficients and their significance levels ($P < 0.01$) of correlation analysis were shown in Table 5. The concentrations of Cu, Zn, Pb, Ni and Cd showed strong positive relationship ($P < 0.01$) with each other. This shows that Cu, Zn, Pb, Ni and Cd come from the same source. However, the concentration of Mn showed very weak correlations with the concentrations of the other metals, except Ni. This indicates that Mn have different sources than Cu, Zn, Pb and Cd. Han et al [68] also found the similar result about Mn by multivariate analysis.

Spatial Distribution of Heavy Metals in the Sediments of Jinzhou Bay

Geostatistics is increasingly used to model the spatial variability of contaminant concentrations and map them using generalized least-squares regression, known as kriging [69–71]. The probabil-

Table 3. Heavy metal concentrations (mg/kg) of Jinzhou Bay sediments (n = 25).

	Minimum	Maximum	Mean	Median	SD	CV%	Skewness	Kurtosis	national guideline values
Cu	24.45	327.50	74.11	51.50	68.54	92.48	2.706	7.964	35.00
Zn	168.06	2506.33	689.39	550.58	568.50	82.46	2.183	4.656	150.00
Pb	29.17	523.45	123.98	89.29	114.70	92.51	2.398	5.934	60.00
Ni	26.29	85.99	43.47	41.41	11.92	27.42	1.835	8.867	–
Mn	445.57	1123.03	750.64	774.00	153.82	20.49	0.311	0.137	–
Cd	7.91	105.31	26.81	20.74	22.23	82.92	2.388	6.155	0.50

The locations of sampling sites are on Fig. 1.
doi:10.1371/journal.pone.0039690.t003

Table 4. Mean concentrations (mg/kg) of heavy metals found in Jinzhou bay compared to the reported average concentrations for other world impacted coastal systems.

Area	Cu	Zn	Pb	Ni	Mn	Cd	Reference
Izmit Bay, Turkey	89.4	754	94.9	52.1	–	6.3	[56]
Ribeira Bay, Brazil	24.6	109	22.9	47	466	0.207	[59]
Sepetiba Bay, Brazil	31.9	567	40	22.3	595	3.22	[59]
Mejillones Bay, Chile	–	29.7	–	20.6	93.8	21.9	[58]
Algeciras Bay, Spain	17	73	24	65	534	0.3	[60]
Taranto Gulf, Italy	47.4	102.3	57.8	53.3	893	–	[11]
Tivoli South Bay, USA	17.6	92.8	26.3	–	–	–	[61]
Bay of Bengal, India	677.7	60.39	25.66	34.03	366.66	5.24	[57]
Gulf of Mannar, India	57	73	16	24	305	0.16	[62]
Gulf of Naples, Italy	27.2	602	221	6.93	1550	0.57	[63]
Hong Kong, China	118.68	147.73	53.56	24.72	523.99	0.33	[64]
This study	74.11	689.39	123.98	43.47	750.64	26.81	

Note: "–" = no data.
doi:10.1371/journal.pone.0039690.t004

ity map produced based on kriging interpolation and kriging standard deviation integrates information about the location of the pollutant source and transport process into the spatial mapping of contaminants [71,72]. There are a lot of studies of the performance of the spatial interpolation methods, but the results are not clear-cut [73]. Some of them found that the kriging method performed better than inverse distance weighting (IDW) [74]; while others showed that kriging was no better than alternative methods [75]. For example, Kazemi and Hosseini [76] compared the ordinary kriging (OK) and other three spatial interpolation methods for estimating heavy metals in sediments of Caspian Sea, they found that the OK realization smoothed out spatial variability and extreme measured values between the range of observed minimum and maximum values for all of the contaminants.

The spatial distribution of metal concentrations is a useful tool to assess the possible sources of enrichment and to identify hot-spot area with high metal concentrations [48,49]. Semivariogram calculation was conducted and experimental semivariogram of sediment heavy metal concentrations could be fitted with the Gaussian model for Cu, Zn, Pb, Cd, Ni and Mn. The theoretical variation function and experimental variation function exhibits a better fitting (Table 6). The values of R were significant at the 0.01 level by F test, which shows that the semivariogram models well reflect the spatial structural characteristics of sediment heavy metals.

The estimated maps of Cu, Zn, Pb, Cd, Ni and Mn clearly identified that the river, where the Huludao Zinc Smelter (HZS) is located at, is the most important source of heavy metals except Mn (Fig. 2). Among these metals, Cu, Zn, Pb and Cd showed a very similar spatial pattern, with contamination hotspots located at the

Table 5. Correlations between heavy metal concentrations.

	Cu	Zn	Pb	Ni	Mn	Cd
Cu	1.000					
Zn	0.919**	1.000				
Pb	0.870**	0.824**	1.000			
Ni	0.499**	0.524**	0.472**	1.000		
Mn	0.115	0.270	0.238	0.515**	1.000	
Cd	0.906**	0.885**	0.972**	0.488**	0.285	1.000

Levels of significance:

*P<0.05;

**P<0.01.

doi:10.1371/journal.pone.0039690.t005

estuary area, and their concentrations decreased sharply with the distance farther away from the estuary, indicating that they were from the same sources. The concentration of Ni also showed a similar pattern with the concentrations of Cu, Zn, Pb and Cd, but it changed not as sharply as the latter one. However, the concentration of Mn showed a completely different pattern with the others, indicating the industrial activities are not the source of Mn in the Jinzhou bay, and it may be related to geological factor. The mineral constituents of Jinzhou bay consist mainly of hornblende, epidote and magnetite. The percentage of hornblende, which is rich in Mn element, varied from 24.78% up to 64.70% [77]. This confirms that the concentration of Mn comes from the geological sources. The feature of point sources lies in that the inputs of heavy metals occur over a finite period of time and may have been effectively retained in the sediments near the sources, rather than re-suspended and distributed uniformly throughout the region [66]. Distinct from point sources, metals from non-point sources are more uniformly distributed throughout the area [50]. The results of this study closely correspond to this association.

The Spatial pattern of heavy metal in Jinzhou bay also provided a refinement and reconfirmation of the results in the statistical analysis, in which strong associations were found among Cu, Zn, Pb, Cd and Ni and very weak relations were found between Mn and the other heavy metals except Ni.

Assessment of Potential Ecological Risk, RI

Almost all the RI values of sampling sites were higher than 600 except the two samples from Wuli river, indicating that the

Table 6. Parameters and F-test of fitted semivariogram models (Gaussian model) for heavy metals in sediment.

	Nugget (C ₀)	Sill (C ₀ +C)	C/(C ₀ +C)	Range	R ²	RSS	F test
Cu	5200	111500	0.953	0.0744	0.833	1.41E+09	24.94**
Zn	170000	4450000	0.962	0.0831	0.868	1.38E+12	32.88**
Pb	7900	106900	0.926	0.0883	0.837	7.23E+08	25.67**
Ni	10	7460	0.999	0.0277	0.513	3.81E+07	5.27**
Mn	7370	38310	0.808	0.0710	0.946	2.71 E+07	87.59**
Cd	220	5550	0.960	0.0935	0.921	8.49 E+05	58.29**
RI	890000	22880000	0.961	0.1004	0.927	1.12E+13	63.49**

**Significance at $\alpha=0.01$ level of F test.

doi:10.1371/journal.pone.0039690.t006

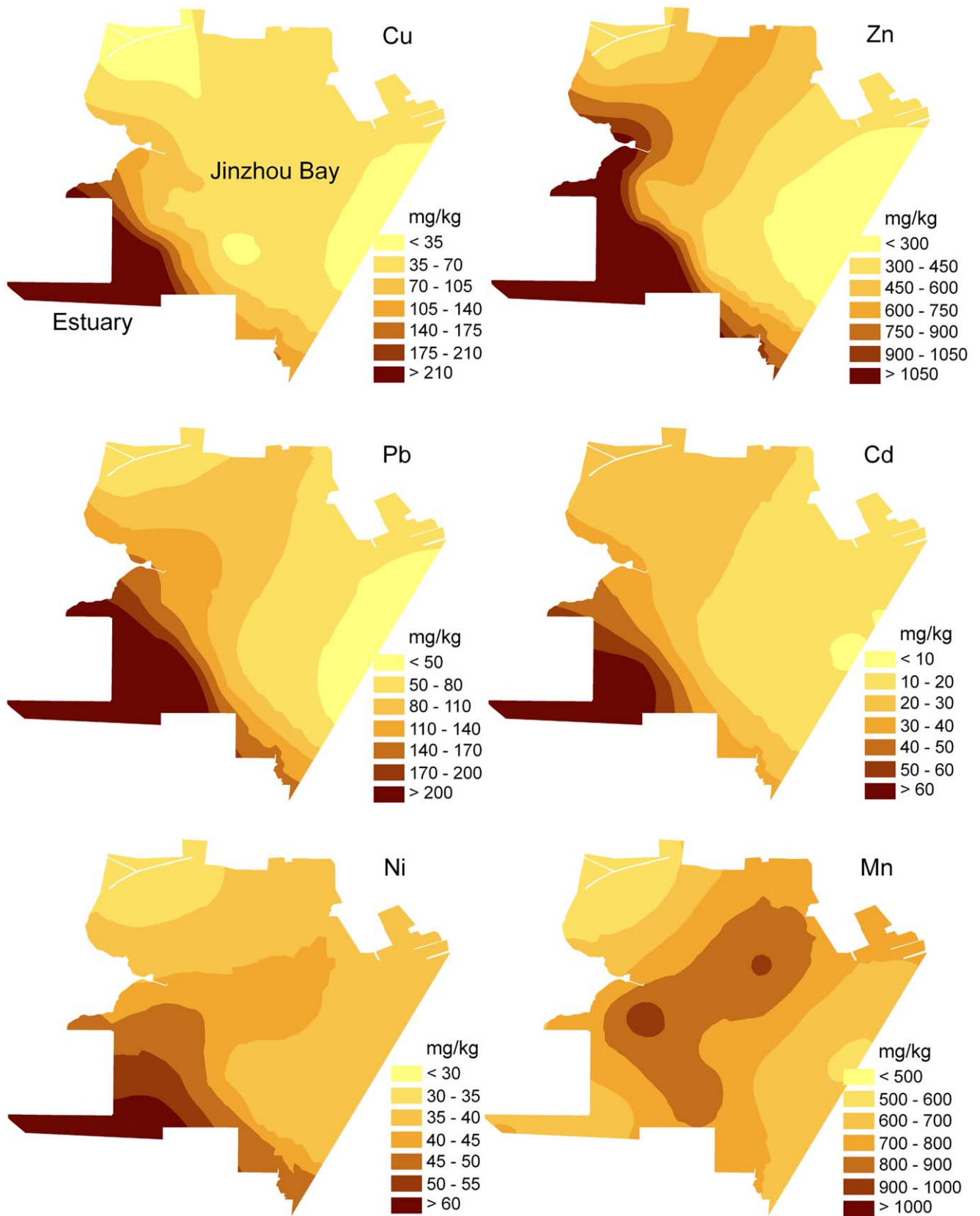


Figure 2. Estimated concentration maps for Cu, Zn, Pb, Cd, Ni and Mn (mg/kg).
 doi:10.1371/journal.pone.0039690.g002

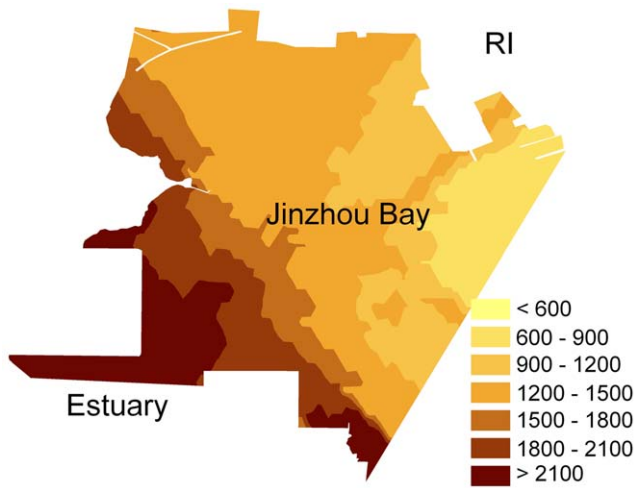


Figure 3. The spatial distribution pattern of RI of sediments in Jinzhou Bay.
doi:10.1371/journal.pone.0039690.g003

sediments in the rivers of Huludao city and their estuary and Jinzhou bay exhibited very high ecological risk of heavy metals (Fig. 3, Table 7). The RI of sediments in the estuary was as high as 34.6 times of the line value for very high ecological risk level, suggesting that the sediments in the estuary were extremely polluted by heavy metals because of industrial discharge. Cd showed the highest potential ecological risk in the heavy metals, which contributed more than 95% of RI in the sampled sediments.

Temporal Distribution of Heavy Metals in the Sediments of Jinzhou Bay

Sediment cores can be used to study the pollution history of aquatic ecosystem [44,48]. Vertical distribution (0–36 cm) of heavy metals in Jinzhou Bay indicate that the concentration of Cu, Zn, Pb and Cd show similar vertical patterns (Fig. 4). The values of Cu, Zn, Pb and Cd increased sharply from the surface to its highest concentration at the depth of 8 cm and then decreased rapidly at a depth of 20 cm. The values of Cu, Zn, Pb and Cd varied slightly from a depth of 21–36 cm. The concentration of Ni

Table 7. The heavy metal potential ecological risk indexes in sediments.

Sediments	E_r^i						Pollution degree
	Cu	Zn	Pb	Ni	Cd	RI	
Lianshan River	16.64	4.23	9.36	31.89	3190.804	3252.96	very high
Wuli River	7.23	1.71	4.80	17.50	667.43	698.69	very high
Estuary	162.50	41.10	135.54	34.54	20414.20	20787.87	very high
Jinzhou Bay	10.59	4.60	10.33	24.15	1608.68	1658.34	very high

doi:10.1371/journal.pone.0039690.t007

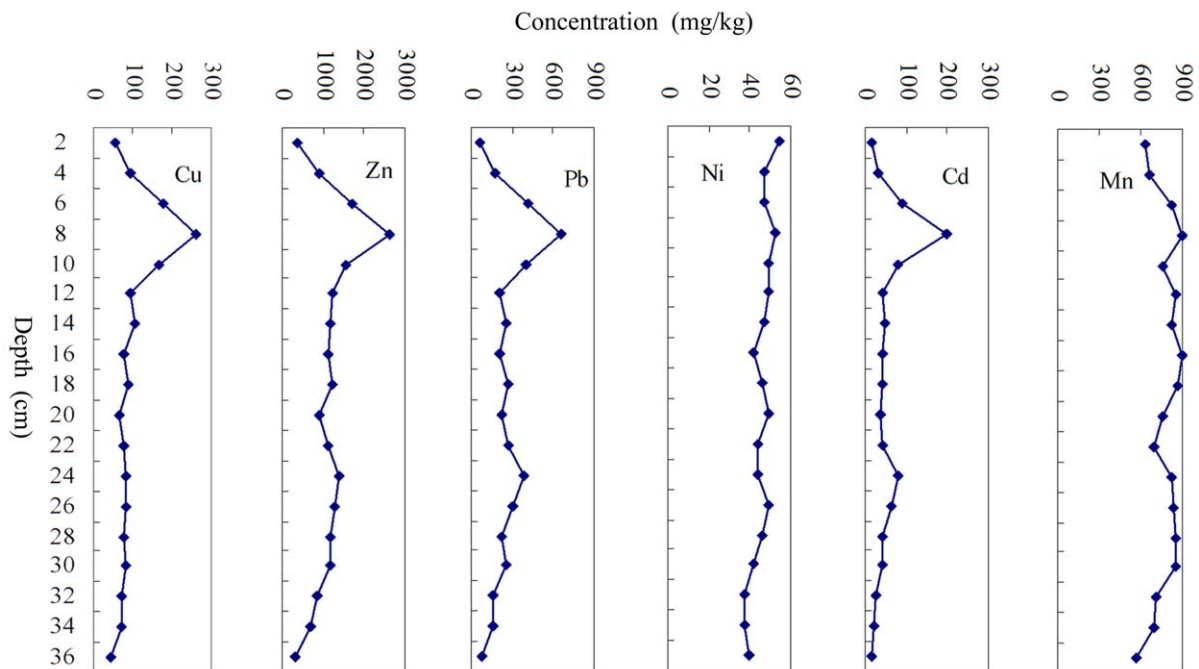


Figure 4. Vertical profiles of heavy metals for sediment core of Jinzhou bay, NE coast of China.
doi:10.1371/journal.pone.0039690.g004

in the sediment core decreased gradually from the surface with small fluctuations while the Mn remained relatively constant throughout the core.

According to the sedimentation rate of about 1.0 cm/yr [78], the bottom of the sediment core (at the depth of 36 cm) was polluted about in 1973, 36 years after the set up of Huludao Zinc Smelter (HZS) in 1937. The heavy metals concentrations were already greatly higher than the national guideline values of marine sediment quality of China (GB 18668-2002), especially the concentration of Cd as high as 31 times of the latter. Related to annual Zn yields of HZS between 1973 and 2010 with the concentrations of Cu, Zn, Pb and Cd in sediment core, they showed similar temporal patterns, especially around the year 2000, the peak of Zn yield was followed the highest heavy metal concentrations at the depth of 8 cm of sediment core. This is conclusive evidence that Zn smelting operation was the dominant pollution source of aquatic environment in Jinzhou Bay. With the disposal and reuse of heavy metal wastewater from HZS around 2000, although the Zn yields increased year by year, the sediment pollution was alleviated gradually since 2000. The concentration of Ni in the sediment core decreased gradually from the surface with small fluctuations, the value varied from 54.36 mg/kg at the surface to 37.09 mg/kg at the depth of 32 cm. This also clearly indicated that the content of Ni in the sediment was come from the industrial discharges. Vertical profile of Mn shows some fluctuations in its concentration, and no obvious correlation with the depth of sediment core was observed. This indicates that the concentration of Mn is not under the control of human factors, as the result showed by the spatial pattern of Mn.

Conclusion

This study investigated the concentrations of heavy metals in the sediments from urban-stream, estuary and Jinzhou bay of the

coastal industrial city, NE China. The results showed the impact of anthropogenic agents on abundances of heavy metals in sediments. The sediments are found to be extremely contaminated due to many years of random dumping of hazardous waste and free discharge of effluents by industries like Huludao Zinc Smelter (the largest zinc smelting plant in Asia), the Jinxi oil refinery and Jinhua chemical engineering, Huludao's massive shipyard and several arms factories. The potential ecological risk of sediments in lower river reaches, estuary and Jinzhou bay is at very high level, and Cd contributed more than 95% of RI in the sampled sediments. The estuary is the most polluted area, and its RI value was as high as 34.6 times of the line value for very high ecological risk level. The closer the distance to the estuary is, the higher RI values of sediments in Jinzhou bay are. The results of this research updated the information for effective environmental management in the industrial region. This study clearly highlights the urgent need to make great efforts to control the industrial discharges in the coastal area, and the immediate measures should be carried out to minimize the contaminations, and to prevent future pollution problems.

Acknowledgments

Many thanks to the three anonymous reviews and the Academic Editor whose pertinent comments have greatly improved the quality of this paper and to Dr. V. Achal and Dr. X. Pan for linguistic edit.

Author Contributions

Conceived and designed the experiments: XL XH. Performed the experiments: XL LL BG. Analyzed the data: XL YW GL. Contributed reagents/materials/analysis tools: YW XC. Wrote the paper: XL XC XY.

References

- McKinley AC, Dafforn KA, Taylor MD, Johnston EL (2011) High Levels of Sediment Contamination Have Little Influence on Estuarine Beach Fish Communities. *PLoS ONE* 6(10): e26353. doi: 10.1371/journal.pone.0026353.
- Morton B, Blackmore G (2001) South China Sea. *Marine Pollution Bulletin* 42: 1236–1263.
- Jha SK, Chavan SB, Pandit GG, Sadasivan S (2003) Geochronology of Pb and Hg pollution in a coastal marine environment using global fallout ¹³⁷Cs. *Journal of Environmental Radioactivity* 69: 145–157.
- Muniz P, Danula E, Yannicelli B, Garcia-Alonso J, Medina G, et al. (2004) Assessment of contamination by heavy metals and petroleum hydrocarbons in sediments of Montevideo Harbour (Uruguay). *Environment International* 29: 1019–1028.
- Xia P, Meng X, Yin P, Cao Z, Wang X (2011) Eighty-year sedimentary record of heavy metal inputs in the intertidal sediments from the Nanliu River estuary, Beibu Gulf of South China Sea. *Environmental pollution* 159: 92–99.
- Fernandes C, Fontainhas-Fernandes A, Peixoto F, Salgado MA (2007) Bioaccumulation of heavy metals in *Liza saliens* from the Esomriz-Paramos coastal lagoon, Portugal. *Ecotoxicology and Environmental Safety* 66: 426–431.
- Abdel-Baki AS, Dkhil MA, Al-Quraishy S (2011) Bioaccumulation of some heavy metals in tilapia fish relevant to their concentration in water and sediment of Wadi Hanifah, Saudi Arabia. *African Journal of Biotechnology* 10: 2541–2547.
- Ridgway J, Breward N, Langston WJ, Lister R, Rees JG, et al. (2003) Distinguishing between natural and anthropogenic sources of metals entering the Irish Sea. *Applied Geochemistry* 18: 283–309.
- Caeiro S, Costa MH, Fernandes F, Silveira N, Coimbra A, et al. (2005) Assessing heavy metal contamination in Sado Estuary sediment: An index analysis approach. *Ecological Indicators* 5: 151–169.
- Sundaray SK, Nayak BB, Lin S, Bhatta D (2011) Geochemical speciation and risk assessment of heavy metals in the river estuarine sediments – a case study: Mahanadi basin, India. *Journal of Hazardous Materials* 186: 1837–1846.
- Buccolieri A, Buccolieri G, Cardellicchio N, Dell'Atti A, Leo AD, et al. (2006) Heavy metals in marine sediments of Taranto Gulf (Ionian Sea, Southern Italy). *Marine Chemistry* 99: 227–235.
- Voet E, Guinée JB, Udo de Haes H (2000) Heavy Metals: A Problem Solved? Methods and Models to Evaluate Policy Strategies for Heavy Metals. Kluwer, Dordrecht, the Netherlands.
- Hjortenkrans D, Bergback B, Haggerud A (2006) New metal emission patterns in road traffic environments. *Environmental Monitoring and Assessment* 117: 85–98.
- Govil PK, Sorlie JE, Murthy NN, Sujatha D, Reddy GLN, et al. (2008) Soil contamination of heavy metals in the Katedan Industrial Development Area, Hyderabad, India. *Environmental Monitoring and Assessment* 140: 313–323.
- Wu SH, Zhou SL, Li XG (2011) Determining the anthropogenic contribution of heavy metal accumulations around a typical industrial town: Xushu, China. *Journal of Geochemical Exploration* 110: 92–97.
- Snodgrass JW, Casey RE, Joseph D, Simon JA (2008). Microcosm investigations of stormwater pond sediment toxicity to embryonic and larval amphibians: variation in sensitivity among species. *Environmental Pollution* 154: 291–297.
- Besser J, Brumbaugh W, Allert A, Poulton B, Schmitt C, et al (2009) Ecological impacts of lead mining on Ozark streams: toxicity of sediment and pore water. *Ecotoxicology and Environmental Safety* 72: 516–526.
- Ip CCM, Li XD, Zhang G, Wai OWH, Li YS (2007) Trace metal distribution in sediments of the Pearl River. Estuary and the surrounding coastal area, South China. *Environmental Pollution* 147: 311–323.
- Suthar S, Arvind KN, Chabukdhara M, Gupta SK (2009) Assessment of metals in water and sediments of Hindon River, India: Impact of industrial and urban discharges. *Journal of Hazardous Materials* 178: 1088–1095.
- IGBP (1995) Global Change. In: Pernetta JC, Milliman JD, editors. Land-ocean interactions in the coastal zone: implementation plan. Report No. 33. Stockholm: ICSU.
- Cobelo-Garcia A, Prego R, Labandeira A (2004) Land inputs of trace metals, major elements, particulate organic carbon and suspended solids to an industrial coastal bay of the NE Atlantic. *Water Research* 38: 1753–1764.
- Birch GF, Taylor SE, Matthai C (2001) Small-scale spatial and temporal variance in the concentration of heavy metals in aquatic sediments: a review and some new concepts. *Environmental Pollution* 113: 357–372.
- Rubio B, Pye K, Rac JE, Rey D (2001) Sedimentological characteristics, heavy metal distribution and magnetic properties in subtidal sediments, Ria de Pontevedra, NW Spain. *Sedimentology* 48: 1277–1296.

24. Sollitto D, Romić M, Castrignanò A, Romić D, Bakic H (2010) Assessing heavy metal contamination in soils of the Zagreb region (Northwest Croatia) using multivariate geostatistics. *CATENA* 80: 182–194.
25. Liu JG (2010) China's Road to Sustainability. *Science* 328: 50.
26. Pan K, Wang WX (2012) Trace metal contamination in estuarine and coastal environments in China. *Science of the Total Environment* 421–422: 3–16.
27. NBSC (2010) National Bureau of Statistics of China. *China Statistical Yearbook* (2001–2009). Beijing.
28. NBO National Bureau of Oceanography of China (2010) *Bulletin of Marine Environmental Quality, 2008–2009*.
29. Yang ZF, Wang Y, Shen ZY, Niu JF, Tang ZW (2009) Distribution and speciation of heavy metals in sediments from the mainstream, tributaries, and lakes of the Yangtze River catchment of Wuhan, China. *Journal of Hazardous Materials* 166: 1186–1194.
30. Fang TH, Li JY, Feng HM, Chen HY (2009) Distribution and contamination of trace metals in surface sediments of the East China Sea. *Marine Environmental Research* 68: 178–187.
31. Müller B, Berg M, Yao ZP, Zhang XF, Wang D, et al. (2008) How polluted is the Yangtze river? Water quality downstream from the Three Gorges Dam. *Science of the Total Environment* 402: 232–247.
32. Chen C, Lu Y, Hong J, Ye M, Wang Y, Lu H (2010) Metal and metalloid contaminant availability in Yundang Lagoon sediments, Xiamen Bay, China, after 20 years continuous rehabilitation. *Journal of Hazardous Materials* 175: 1048–1055.
33. Zhang YF, Wang LJ, Huo CL, Guan DM (2008) Assessment on heavy metals pollution in surface sediments in Jinzhou Bay. *Marine Environmental Science* 2: 178–181.
34. Research and Markets website. Business monitor international. China Metals report. Available: http://www.researchandmarkets.com/research/703645/china_metals_repor. Accessed 2012 May 30.
35. Institute of Marine Environmental protection, State oceanic Administration. (1984) *Studies on the contamination and protection of Jinzhou Bay*.
36. Lu CA, Zhang JF, Jiang HM, Yang JC, Zhang JT, et al. (2010) Assessment of soil contamination with Cd, Pb and Zn and source identification in the area around the Huludao Zinc Plant. *Journal of Hazardous Materials* 182: 743–748.
37. Zheng N, Wang QC, Liang ZZ, Zheng DM (2008) Characterization of heavy metal concentrations in the sediments of three freshwater rivers in Huludao City, Northeast China. *Environmental Pollution* 154: 135–142.
38. Wang J, Liu RH, Yu P, Tang AK, Xu LQ, et al. (2012) Study on the Pollution Characteristics of Heavy Metals in Seawater of Jinzhou Bay. *Procedia Environmental Sciences* 13: 507–1516.
39. Porstner U (1989) *Lecture Notes in Earth Sciences (Contaminated Sediments)*. Springer Verlag, Berlin, 107–109.
40. Håkanson L (1980) An ecological risk index for aquatic pollution control: A sedimentological approach. *Water Research* 14: 975–1001.
41. Selvaraj K, Mohan Ram V, Piotr S (2004) Evaluation of Metal Contamination in Coastal Sediments of the Bay of Bengal, India: Geochemical and Statistical Approaches. *Marine Pollution Bulletin* 49: 174–185.
42. Verca P, Dolence T (2005) Geochemical Estimation of Copper Contamination in the Healing Mud from Makirina Bay, Central Adriatic. *Environment International* 31: 53–61.
43. Yi YJ, Yang ZF, Zhang SH (2011) Ecological risk assessment of heavy metals in sediment and human health risk assessment of heavy metals in fishes in the middle and lower reaches of the Yangtze River basin. *Environmental Pollution* 159: 2575–2585.
44. Harikumar PS, Nasir UP (2010) Ecotoxicological impact assessment of heavy metals in core sediments of a tropical estuary. *Ecotoxicology and Environmental Safety* 73: 1742–1747.
45. Huang YL, Zhu WB, Le MH, Lu XX (2011) Temporal and spatial variations of heavy metals in urban riverine sediment: An example of Shenzhen River, Pearl River Delta, China. *Quaternary International* doi: 10.1016/j.quaint.2011.05.026.
46. Uluturhan E, Kontas A, Can E (2011) Sediment concentrations of heavy metals in the Homa Lagoon (Eastern Aegean Sea): Assessment of contamination and ecological risks. *Marine Pollution Bulletin* 62: 1989–1997.
47. Rosales-Hoz L, Cundy AB, Bahena-Manjarrez JL (2003) Heavy metals in sediment cores from a tropical estuary affected by anthropogenic discharges: Coatzacoalcos estuary. *Estuarine, Coastal and Shelf Science* 58: 117–126.
48. Karbassi AR, Nabi-Bidhendi GHR, Bayati I (2005) Environmental geochemistry of heavy metals in a sediment core off Bushehr, Persian Gulf. *Iranian Journal of Environmental Health Science & Engineering* 2: 255–260.
49. Viguri JR, Irabien MJ, Yusta I, Soto J, Gomez J, et al. (2007) Physico-chemical and toxicological characterization of the historic estuarine sediments. A multidisciplinary approach. *Environment International* 33: 436–444.
50. Shine JP, Ika RV, Ford TE (1995) Multivariate statistical examination of spatial and temporal patterns of heavy-metal contamination in New-Bedford Harbor marine-sediments. *Environmental Science and Technology* 29: 1781–1788.
51. White HK, Xu L, Lima ANL, Eglint TI, Reddy CM (2005) Abundance, composition and vertical transport of PAHs in marsh sediments. *Environmental Science and Technology* 39: 8273–8280.
52. Berthelsen BO, Steinnes E, Solberg W (1995) Heavy metal concentrations in plants in relation to atmospheric heavy metal deposition. *Journal of Environmental Quality* 24: 1018–1026.
53. Gray CW, McLaren RG, Roberts AHC (2003) Atmospheric accessions of heavy metals to some New Zealand pastoral soils. *Science of the Total Environment* 305: 105–115.
54. Li LL, Yi YL, Wang YS, Zhang DG (2006) Spatial distribution of soil heavy metals and pollution evaluation in Huludao City. *Chinese Journal of Soil Science* 37: 495–499.
55. Feng H, Cochran JK, Lwiza H, Brownawell BJ, Hirschberg DJ (1998) Distribution of heavy metal and PCB contaminants in the sediments of an urban estuary: The Hudson River. *Marine Environmental Research* 45: 69–88.
56. Pekey H (2006) Heavy metal pollution assessment in sediments of the Izmit Bay, Turkey. *Environmental Monitoring and Assessment* 123: 219–231.
57. Raju K, Vijayaraghavan K, Seshachalam S, Muthumanickam J (2011) Impact of anthropogenic input on physicochemical parameters and trace metals in marine surface sediments of Bay of Bengal off Chennai, India. *Environmental Monitoring and Assessment* 177: 95–114.
58. Valdés J, Vargas G, Sifeddine A, Ordlieb L, Guipéz M (2005). Distribution and enrichment evaluation of heavy metals in the Mejillones Bay Northern Chile: Geochemical and statistical approach. *Marine Pollution Bulletin* 50: 1558–1568.
59. Gomes F, Godoy J, Godoy M, Carvalho Z, Lopes R, et al. (2009) Metal concentrations, fluxes, inventories and chronologies in sediments from Sepetiba and Ribeira Bays: A comparative study. *Marine Pollution Bulletin* 59: 123–133.
60. Alba MD, Galindo-Riaño MD, Casanueva-Marengo MJ, Garcia-Vargas M, Kosore CM (2011) Assessment of the metal pollution, potential toxicity and speciation of sediment from Algeciras Bay (South of Spain) using chemometric tools. *Journal of Hazardous Materials* 190: 177–187.
61. Benoit G, Wang EX, Nieder WC, Levandowsky M, Breslin VT (1999) Sources and history of heavy metal contamination and sediment deposition in Tivoli Estuary Bay, Hudson River, New York. *Estuaries* 22: 167–178.
62. Jonathan M P, Stephen-Pichaimani V, Srinivasulu S, RajeshwaraRao N, Mohan SP (2007) Enrichment of trace metals in surface sediments from the northern part of Point Calimere, SE coast of India. *Environmental Geology* 55: 1811–1819.
63. Romano E, Ausili A, Zharova N, Magno MC, Pavoni B, et al. (2004) Marine sediment contamination of an industrial site at Port of Bagnoli, Gulf of Naples, Southern Italy. *Marine Pollution Bulletin* 49: 487–495.
64. Zhou F, Guo HC, Hao ZJ (2007) Spatial distribution of heavy metals in Hong Kong's marine sediments and their human impacts: a GIS-based chemometric approach. *Marine Pollution Bulletin* 54: 1372–84.
65. Al-Khashman OA, Shawabkeh RA (2006) Metals distribution in soils around the cement factory in southern Jordan. *Environmental Pollution* 140: 387–394.
66. Facchinelli A, Sacchi E, Mallen L (2001) Multivariate statistical and GIS-based approach to identify heavy metal sources in soils. *Environmental Pollution* 114: 313–324.
67. Manta DS, Angelone M, Bellanca A, Neri R, Sprovieri M (2002) Heavy metals in urban soils: a case study from the city of Palermo (Sicily), Italy. *The Science of the Total Environment* 300: 229–243.
68. Han Y, Du P, Cao J, Posmentier ES (2006) Multivariate analysis of heavy metal contamination in urban dusts of Xi'an, Central China. *Science of the Total Environment* 355: 176–186.
69. Carlon C, Critto A, Marcomini A, Nathanail P (2001) Risk based characterisation of contaminated industrial site using multivariate and geostatistical tools. *Environmental Pollution* 111: 417–427.
70. Romić M, Romić D (2003) Heavy metals distribution in agricultural topsoils in urban area. *Environmental Pollution* 43: 795–805.
71. McGrath D, Zhang CS, Carton OT (2004) Geostatistical analyses and hazard assessment on soil lead in Silvermines area, Ireland. *Environmental Pollution* 127: 239–248.
72. Saito H, Goovaerts P (2001) Accounting for source location and transport direction into geostatistical prediction of contaminants. *Environmental Science & Technology* 35: 4823–4829.
73. Xie YF, Chen TB, Lei M, Yang J, Guo QJ, et al. (2011) Spatial distribution of soil heavy metal pollution estimated by different interpolation methods: Accuracy and uncertainty analysis. *Chemosphere* 82: 468–476.
74. Yasrebi J, Saffari M, Fathi H, Karimian N, Moazallahi M, et al. (2009) Evaluation and comparison of ordinary kriging and inverse distance weighting methods for prediction of spatial variability of some soil chemical parameters. *Research Journal of Biological Sciences* 4: 93–102.
75. Gotway CA, Ferguson RB, Hergert GW, Peterson TA (1996) Comparison of kriging and inverse-distance methods for mapping soil parameters. *Soil Science Society of America Journal* 60: 1237–1247.
76. Kazemi SM, Hossaini SM (2011) Comparison of spatial interpolation methods for estimating heavy metals in sediments of Caspian Sea. *Expert Systems with Applications* 38: 1632–1649.
77. Compiling Council of Chinese Embayment (1997) *Chinese Embayment (Part 2)*. Beijing: China Ocean Press.
78. Ma JR, Shao MH (1994) Variation in heavy metal pollution of offshore sedimentary cores in Jinzhou Bay. *China Environmental Science* 14: 22–29.