

# Long-term postoperative survival prediction in patients with colorectal liver metastasis

Kun Wang<sup>1,\*</sup>, Wei Liu<sup>1,\*</sup>, Xiao-Luan Yan<sup>1</sup>, Juan Li<sup>1</sup> and Bao-Cai Xing<sup>1</sup>

<sup>1</sup>Hepatopancreatobiliary Surgery Department I, Key Laboratory of Carcinogenesis and Translational Research, Ministry of Education, Peking University School of Oncology, Beijing Cancer Hospital and Institute, Beijing, PR China

\*These authors contributed equally to this work

**Correspondence to:** Bao-Cai Xing, **email:** xingbaocai88@sina.com

**Keywords:** colorectal cancer, KRAS mutation, colorectal liver metastasis, chemotherapy, survival

**Received:** May 24, 2017

**Accepted:** August 05, 2017

**Published:** August 18, 2017

Copyright: Wang et al. This is an open-access article distributed under the terms of the Creative Commons Attribution License 3.0 (CC BY 3.0), which permits unrestricted use, distribution, and reproduction in any medium, provided the original author and source are credited.

## ABSTRACT

**Numerous factors affect the prognosis of colorectal liver metastasis (CRLM) patients after hepatic resection. We investigated several factors related to overall survival in patients with CRLM to identify those most likely to benefit from hepatic resection, and produced a rational tumor biology score system. Three hundred CRLM patients treated with preoperative chemotherapy followed by hepatic resection between 2006 and 2016 were enrolled in our study. Clinicopathologic and long-term survival data were collected and assessed. Patient 1-, 3-, and 5-year overall survival rates were 92.7%, 58.3%, and 45.8%, respectively, while 1-, 3-, and 5-year disease-free survival rates were 44.7%, 28.6%, and 24.2%, respectively. Multivariate Cox regression analysis revealed poor preoperative chemotherapy response, Fong clinical risk score > 2, and KRAS mutation to be independent prognostic indicators in CRLM patients. As part of a preoperative staging system in which one point was assigned for each factor, a total score (out of 3) was predictive of long-term survival following surgery. These factors facilitate personalized prognostic assessments in CRLM patients planning for resection.**

## INTRODUCTION

Approximately 50% of patients with primary colorectal cancer will develop liver metastases during their disease course [1]. Hepatic resection remains the only potentially curative treatment option for patients with colorectal liver metastasis (CRLM). While 5-year survival rates can be as high as 50–58%, patient prognoses can vary considerably [2, 3].

Criteria used to select CRLM patients for hepatic resection are based largely on clinical and radiologic parameters, such as tumor size and number, and response to preoperative chemotherapy, that attempt to predict prognosis post-resection [4–6]. Preoperative chemotherapy can shrink metastases and increase their resectability, and may also help select patients most likely to benefit from surgery [7, 8]. However, the prognostic landscape for predicting long-term outcomes in patients undergoing CRLM resection is changing [9]. Many prognostic models now rely on clinicopathological factors and tumor-

specific molecular markers. Combining multiple factors within a single scoring system would better aid clinical decision-making. Thus, the present study investigated various tumor-related factors to develop a scoring system to predict CRLM patient survival following hepatic resection.

## RESULTS

This study analyzed 300 patients who received preoperative chemotherapy and underwent hepatic resection to treat CRLM between January 2006 and December 2016 (Table 1). No patients died from postoperative complications within 90 days of surgery, and all were eligible for the final analysis. Primary tumor resection was performed before hepatic resection in 173 patients (57.7%), during in 77 (25.7%) and after in 44 (16.6%). Liver metastasis was diagnosed synchronously in 265 patients (88.3%). Concomitant extrahepatic disease was present in 54 patients (18%). Conversion and

neoadjuvant chemotherapy features are summarized in Table 2. Preoperative chemotherapy was administered to all patients with a median of four (range, 1–16) cycles. Major hepatic resection was performed in 135 patients (45.0%). 190 patients had a KRAS mutation, 155 had a Fong clinical risk score (CRS) > 2, and 182 exhibited poor response to preoperative chemotherapy.

### Long-term outcomes

Median follow-up time was 45 (range, 1–131) months, and no patients died during follow-up. Cumulative overall survival (OS) rates 1, 3, and 5 years after hepatic resection were 92.7%, 58.3%, and 45.8%, respectively. Cumulative disease-free survival (DFS) rates 1, 3, and 5 years after surgery were 44.7%, 28.6%, and 24.2% respectively, on an intention-to-treat basis (Figure 1).

### Univariate and multivariate analyses of factors associated with OS

In univariate analyses, five variables, including KRAS mutation, Fong CRS > 2, tumor number > 1, size > 5 cm at diagnosis, and poor response to preoperative chemotherapy, were associated with decreased OS ( $p < 0.050$ ) (Table 3). These variables were included in a subsequent multivariate Cox regression analysis, which identified three independent prognostic factors for OS: Fong CRS > 2 (HR: 4.247; 95% CI: 1.758–8.260;  $p = 0.001$ ), KRAS mutation (HR: 2.196; 95% CI: 1.372–3.515;  $p < 0.001$ ) and poor response to preoperative chemotherapy (HR: 2.054; 95% CI: 1.025–4.119;  $p = 0.042$ ) (Table 3).

### Tumor biology score

KRAS mutation, Fong CRS > 2, and poor preoperative chemotherapy response were chosen as criteria for a tumor biology score (TBS) staging system. Each risk factor was assigned one point, and total score was compared with the clinical outcome of each patient after hepatic resection. Five-year OS rates for patients scoring TBS 0, 1, 2, and 3 were 63.7%, 49.6%, 33.3%, and 14.1%, respectively (Figure 2).

### Prognostic predictive power

Nine eligible studies satisfied our inclusion criteria, and patient demographic and clinicopathological data were extracted (Supplementary Table 1) [4, 5, 10–16]. The predictive powers of the Fong, Iwatsuki, Konopke, Nagashima, Nordlinger, Pawlik, Rees, Vauthey scores, and our TBS were 0.585 (95% CI: 0.520–0.549;  $p = 0.011$ ), 0.513 (95% CI: 0.443–0.584;  $p = 0.710$ ), 0.585 (95% CI: 0.474–0.696;  $p = 0.098$ ), 0.509 (95% CI: 0.443–0.575;  $p = 0.788$ ), 0.529 (95% CI: 0.464–0.594;  $p = 0.385$ ), 0.524 (95% CI: 0.451–0.598;  $p = 0.506$ ), 0.510 (95% CI: 0.440–0.581;  $p = 0.769$ ), 0.615 (95% CI: 0.531–0.699;  $p = 0.043$ ), and 0.642 (95% CI: 0.570–0.713;  $p = 0.036$ ), respectively.

## DISCUSSION

This study investigated several prognostic factors related to OS in patients with CRLM, and produced a rational tumor biology score system. Multivariate Cox regression analysis identified three variables, including

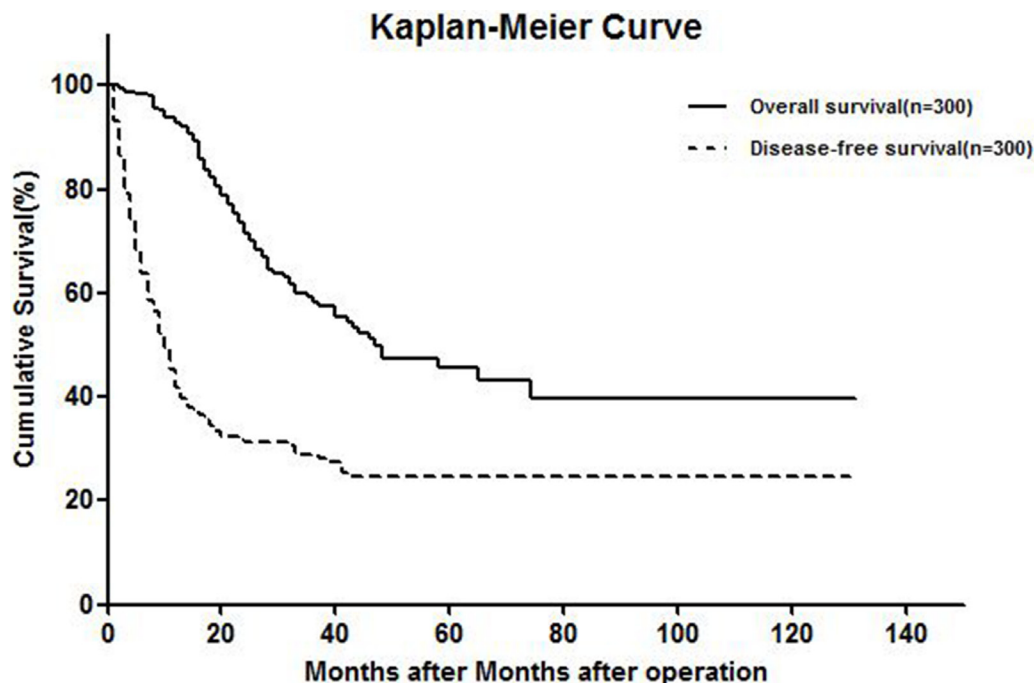


Figure 1: Kaplan-meier curve showing OS and DFS.

KRAS mutation, Fong CRS > 2, and poor preoperative chemotherapy response, as independent prognostic factors for CRLM patients who plan to undergo hepatic resection.

In selected patients with unresectable disease, conversion chemotherapy may allow for secondary resection and improved long-term survival [17]. Neoadjuvant chemotherapy has been also proposed for patients with resectable disease and negative prognostic factors to better select those who could benefit from liver surgery, and to avoid surgery in patients with rapidly progressing tumors [18]. RECIST was established to assess cytotoxic treatment effects in solid tumors, and CRLM response to preoperative chemotherapy has prognostic value [8]. Partial response suggests a better prognosis, while stable disease is likely due to tumor cell resistance. However, recent findings question the effectiveness of RECIST in colorectal cancer patients [19]. The conventional tumor size-based radiologic criteria of RECIST may be inadequate in assessing response to chemotherapy, especially in patients treated with a regimen including bevacizumab [20]. Lesions that are predominantly necrotic may not be ideal RECIST targets, because their attenuation closely mimics that of a treated lesion. In some instances, stable disease response may be inconsistent with improvement via RECIST criteria, but still associated with an optimal morphologic response [21]. More recently, investigators have proposed pathological and radiological responses to chemotherapy as alternative outcome endpoints for predicting survival after CRLM resection [21, 22]. However, pathological response can be assessed only after surgery, and survival was associated with radiological response primarily in patients receiving preoperative anti-vascular endothelial growth factor (VEGF) therapy [23, 24].

Several clinical risk scores (CRS) have been developed to predict tumor recurrence and survival after CRLM resection [4, 5]. The most validated and widely-used CRS was described by Fong, *et al.* in 1999 [4]. The Fong CRS identified five independent prognostic clinical variables predicting survival after CRLM surgery, and characterized two risk groups: patients with a high-risk profile have worse OS rates than low-risk patients. Although all CRLMs may be considered high risk, this CRS may explain the relative lack of systemic therapy efficacy when combined with surgery in the metastasized setting. Tomlinson, *et al.* demonstrated in CRLM surgery 10-year survivors that patients with a low Fong CRS had a cure rate of 21% versus 10% in patients with a high CRS [25]. In high CRS patients, perioperative chemotherapy was associated with a survival advantage, but was of no benefit in low CRS patients. Data suggests that patients with a low CRS have a favorable tumor biology [26]. However, large, single-institution studies have questioned the validity and clinical usefulness of risk scores [27, 28]. The prognostic significance of most of these factors was determined at a time when effective cytotoxic agents were not available. Consequently, although most of these factors are still routinely used, their utility as prognostic indicators in the era of modern chemotherapy is uncertain and should be reassessed.

While many prognostic models now rely on clinicopathological factors, molecular biomarkers are likely to replace traditional clinical and morphometric factors [9, 29]. KRAS mutations are associated with tumor cell migration and invasion via disruption of the actin cytoskeleton and regulation of integrin expression, among other mechanisms [30, 31]. The prognostic importance of activating KRAS mutations extends beyond predicting

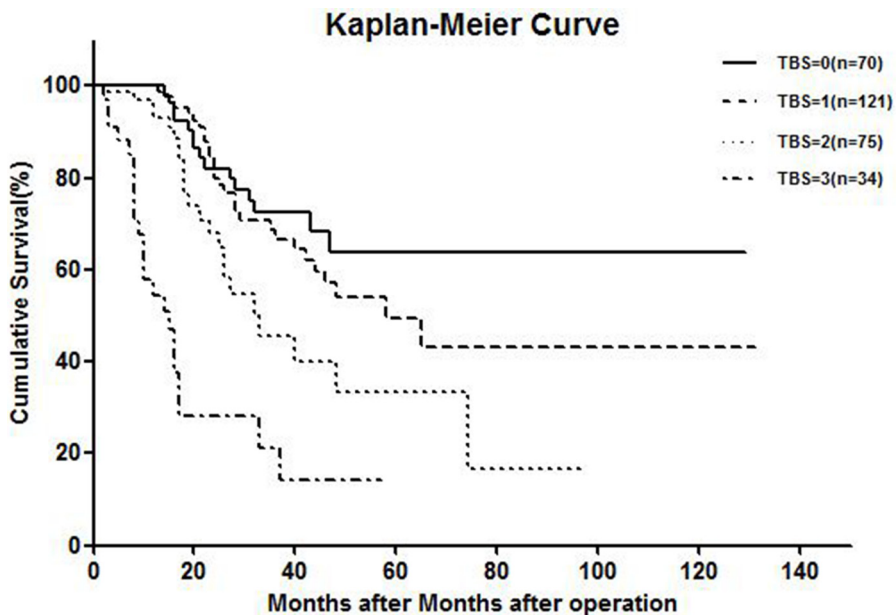


Figure 2: Kaplan-meier curve showing overall survival of TBS system.

**Table 1: Demographic and clinical characteristics of study patients**

| Variable                         | No. of patients |
|----------------------------------|-----------------|
| Patients demographics            |                 |
| Age (years)                      | 55 (21–82)      |
| Sex ratio (M:F)                  | 196:104         |
| Primary T category               |                 |
| T1–2                             | 50 (16.7%)      |
| T3–4                             | 250 (83.3%)     |
| Primary N category               |                 |
| N0                               | 136 (45.3%)     |
| N1–2                             | 164 (54.7%)     |
| Primary tumor location           |                 |
| Colon                            | 128 (42.7%)     |
| Rectum                           | 172 (57.3%)     |
| Primary tumor                    |                 |
| Right                            | 53 (17.7%)      |
| Left                             | 247 (82.3%)     |
| Primary tumor resection          |                 |
| Before hepatectomy               | 179 (59.7%)     |
| During hepatectomy               | 77 (25.7%)      |
| After hepatectomy                | 44 (14.6%)      |
| Timing of liver metastasis       |                 |
| Synchronous                      | 265 (88.3%)     |
| Metachronous                     | 35 (11.7%)      |
| Tumor no.                        | 3 (1–22)        |
| Tumor size (mm)                  | 25 (1–150)      |
| Localization of liver metastases |                 |
| Unilobar                         | 135 (45.0%)     |
| Bilobar                          | 165 (55.0%)     |
| CEA level (ng/ml)                | 7.11 (0.1–861)  |
| Concomitant extrahepatic disease | 54 (18.0%)      |
| Pre-treatment                    |                 |
| Conversion                       | 65 (21.7%)      |
| Neoadjuvant                      | 235 (78.3%)     |

sensitivity to anti-EGFR monoclonal antibodies, and may reflect a more migratory and invasive tumor biology resulting in early and frequent recurrences after hepatic resection. Historically, survival predictions were based on primary tumor and metastases morphological characteristics. Factors associated with aggressive or advanced tumor biology, such as bilobar disease, multiple metastases, large metastases, and metastases in difficult locations, are also associated with technically complex cases.

In conclusion, our analysis revealed three important factors for predicting prognosis in CRLM patients undergoing surgery. Characterization of novel biomarkers

in these patients will enhance our understanding of CRLM aggressiveness, assist in clinical decision-making, and help to identify new, more efficient therapies.

## MATERIALS AND METHODS

### Patients

Between January 2006 and December 2016, 300 CRLM patients received preoperative chemotherapy and underwent hepatic resection at the Hepatopancreatobiliary Surgery Department I of Peking University Cancer Hospital. CRLM diagnoses were all confirmed by histopathology.

**Table 2: Details of preoperative chemotherapy and hepatic resection**

| Variable                              | No. of patients |
|---------------------------------------|-----------------|
| Chemotherapy before hepatic resection |                 |
| No. of cycles                         | 4 (1–16)        |
| No. of lines                          |                 |
| First line                            | 237 (79.0%)     |
| Second line                           | 56 (18.7%)      |
| Third line                            | 7 (2.3%)        |
| Response to last-line chemotherapy    |                 |
| Complete                              | 3 (1.0%)        |
| Partial                               | 128 (42.7%)     |
| Stable disease                        | 141 (47.0%)     |
| Progressive disease                   | 28 (9.3%)       |
| Surgery details                       |                 |
| Operation time(min)                   | 221.7 ± 84.0    |
| Blood lose(ml)                        | 272.0 ± 99.0    |
| Hepatic resection                     |                 |
| Major resection                       | 135 (45.0%)     |
| Minor resection                       | 165 (55.0%)     |
| Margine status                        |                 |
| Positive                              | 58 (19.3%)      |
| Negative                              | 242 (80.7%)     |
| Complication                          |                 |
| Major(Clavien grade ≥ 3)              | 12 (4.0%)       |
| Minor(Clavien grade < 3)              | 26 (8.7%)       |

### Preoperative management

As a result of the long study period, response to chemotherapy was classified according to World Health Organization criteria, which are in agreement with the Response Evaluation Criteria in Solid Tumors (RECIST) [32]. Poor preoperative chemotherapy response was represented by progressive disease or stable disease with the target lesion increased in diameter by < 30%. If the disease was not controlled with chemotherapy, systemic chemotherapy was restarted using another regimen. Response was then re-evaluated to assess the possibility of surgery. Response was based on the last-line preoperative chemotherapy before hepatic resection. Two radiologists reviewed all images from the 300 patients independently.

### Surgical treatment

The objective of surgery was to resect all detectable lesions with tumor-free margins. If obtaining a tumor-free margin was not possible due to contact with major vascular or biliary structures, resection was still indicated provided that all tumors could be resected macroscopically. All patients underwent hepatic resection with curative intent,

and to achieve complete resection (R0) while preserving as much normal functional liver parenchyma (with adequate vascular inflow, outflow, and biliary drainage) as possible. Resection of three or more segments was considered a major hepatic resection. The normal liver parenchyma remnant volume was > 30%. For chemotherapy liver injury patients, the remnant volume should be preserved at > 40%. The presence of extrahepatic tumors was not considered a contraindication to hepatic resection if the lesions were limited and resectable. Extrahepatic disease identified in the abdominal cavity was resected at the same time as hepatic resection. For extrahepatic disease located outside the abdomen, resection was performed 2–3 months after hepatectomy if the disease remained controlled with interval chemotherapy.

### Postoperative treatment

Postoperative chemotherapy was recommended routinely, using the same protocol as that applied before surgery. Recurrence was treated surgically only when the overall strategy was considered potentially curative. All patients were followed up every three months for the first two years, with a physical examination, carcinoembryonic antigen



**Table 3: Prognostic factors of overall survival after hepatectomy**

| Analysis                         |              | n   | 5-year OS | HR    | 95% CI      | p value |
|----------------------------------|--------------|-----|-----------|-------|-------------|---------|
| <b>Univariate</b>                |              |     |           |       |             |         |
| Age                              | > 60 y       | 94  | 40.7%     | 0.874 | 0.556–1.375 | 0.561   |
|                                  | ≤ 60         | 206 | 47.6%     |       |             |         |
| Sex                              | Male         | 196 | 39.9%     | 1.215 | 0.773–1.911 | 0.399   |
|                                  | Female       | 104 | 56.4%     |       |             |         |
| Primary T category               | T1-T2        | 50  | 40.9%     | 0.849 | 0.494–1.459 | 0.554   |
|                                  | T3-T4        | 250 | 46.7%     |       |             |         |
| Primary N category               | N0           | 136 | 44.7%     | 1.079 | 0.711–1.638 | 0.721   |
|                                  | N1           | 164 | 45.6%     |       |             |         |
| Primary tumor location           | Left         | 247 | 42.4%     | 1.325 | 0.735–2.368 | 0.349   |
|                                  | Right        | 53  | 42.0%     |       |             |         |
| Timing of liver metastasis       | Synchronous  | 265 | 43.8%     | 1.497 | 0.748–2.995 | 0.255   |
|                                  | Metachronous | 35  | 58.5%     |       |             |         |
| Tumor no. at diagnosis           | n = 1        | 80  | 54.5%     | 1.686 | 1.012–2.809 | 0.045   |
|                                  | n > 1        | 220 | 42.7%     |       |             |         |
| Tumor size at diagnosis          | > 50 mm      | 41  | 22.7%     | 2.414 | 1.518–3.863 | 0.000   |
|                                  | ≤ 50         | 259 | 53.2%     |       |             |         |
| Location of liver metastasis     | Bilobar      | 165 | 43.9%     | 1.262 | 0.826–1.928 | 0.282   |
|                                  | Unilobar     | 135 | 46.8%     |       |             |         |
| CEA level(ng/ml)                 | > 200        | 15  | 46.4%     | 2.114 | 0.917–4.877 | 0.079   |
|                                  | ≤ 200        | 285 | 46.7%     |       |             |         |
| Concomitant extrahepatic disease | Yes          | 54  | 41.3%     | 1.408 | 0.896–2.281 | 0.164   |
|                                  | No           | 246 | 47.2%     |       |             |         |
| Major hepatectomy                | Yes          | 135 | 40.2%     | 1.436 | 0.947–2.177 | 0.089   |
|                                  | No           | 165 | 50.3%     |       |             |         |
| CRS                              | ≤ 2          | 155 | 57.5%     | 2.427 | 1.575–3.740 | 0.000   |
|                                  | > 2          | 145 | 32.6%     |       |             |         |
| KRAS status type                 | Wild         | 190 | 53.6%     | 2.691 | 1.772–4.086 | 0.000   |
|                                  | Mutation     | 110 | 31.7%     |       |             |         |
| Worse chemotherapy response      | Yes          | 182 | 33.8%     | 2.010 | 1.322–3.057 | 0.001   |
|                                  | No           | 118 | 51.8%     |       |             |         |
| Margin                           | Positive     | 58  | 45.1%     | 1.029 | 0.491–2.156 | 0.939   |
|                                  | Negative     | 242 | 46.3%     |       |             |         |
| Pre-treatment                    | Neo          | 235 | 48.2%     | 1.130 | 0.679–1.881 | 0.637   |
|                                  | Con          | 65  | 33.1%     |       |             |         |
| Primary tumor                    | Rectum       | 172 | 50.1%     | 1.301 | 0.859–1.972 | 0.214   |
|                                  | Colon        | 128 | 39.9%     |       |             |         |
| Major complications              | Yes          | 12  | 42.8%     | 1.228 | 0.674–2.236 | 0.117   |
|                                  | No           | 288 | 47.6%     |       |             |         |
| <b>Multivariate</b>              |              |     |           |       |             |         |
| Tumor no. at diagnosis           | n > 1        | 220 |           | 2.588 | 0.787–8.511 | 0.117   |
| Tumor size at diagnosis          | > 50 mm      | 41  |           | 3.140 | 0.935–4.542 | 0.064   |
| CRS                              | > 2          | 155 |           | 4.247 | 1.758–8.260 | 0.001   |
| KRAS status                      | Mutation     | 190 |           | 2.196 | 1.372–3.515 | 0.001   |
| Chemotherapy response            | Worse        | 182 |           | 2.054 | 1.025–4.119 | 0.042   |

(CEA) measurement, and abdominal ultrasonography. Every six months, patients underwent computed tomography scan

of the abdominal/thoracic/pelvic region (enhanced MRI could replace CT). No patients died during follow-up.

## Statistical analysis

Continuous variables were summarized as means and categorical variables were summarized as frequencies and percentages. Qualitative variable comparisons were performed using Pearson's chi-square test. Kaplan-Meier survival curves were calculated from the date of hepatic resection and differences were determined using a log-rank test. Clinicopathologic factors were analyzed using Cox's proportional hazard model to identify independent risk factors for overall survival.  $p < 0.05$  (two-sided) was considered significant. Statistical analyses were performed using SPSS 19.0 (SPSS, Inc., Chicago, IL, USA).

## Comprehensive MEDLINE review

We comprehensively searched the MEDLINE database using the following medical subject headings (MeSH): "colorectal liver metastases" or "colorectal metastasis" and "liver resection" or "hepatic resection" or "surgery". We also manually searched relevant references and review articles. Studies were included in our review if they (a) proposed a scoring system to predict CRLM survival outcome, (b) were published in English, and (c) were published between January 1990 and April 2017, to ensure comparability with our retrospective clinical study. Studies involving fewer than 50 patients were excluded. To compare staging systems as predictors of prognosis after hepatic resection, we used the concordance c-statistic (as the area under the receiver operating characteristic [ROC] curve). Prognostic system performance is related to homogeneity (small differences in survival among patients at the same stage within each system), discrimination ability (greater differences in survival among patients at different stages within each system), and monotonicity of gradients (survival of patients at earlier stages is longer than that of patients at more advanced stages within the same system).

## CONFLICTS OF INTEREST

We state that any of the authors in this manuscript does not involve the conflicts of interest.

## GRANT SUPPORT

This research was supported by grants from the National Nature Science Foundation of China (No.81371868).

## REFERENCES

1. Leung U, Gönen M, Allen PJ, Kingham TP, DeMatteo RP, Jarnagin WR, D'Angelica MI. Colorectal Cancer Liver Metastases and Concurrent Extrahepatic Disease Treated With Resection. *Ann Surg.* 2017; 265:158–165.
2. Kopetz S, Chang GJ, Overman MJ, Eng C, Sargent DJ, Larson DW, Grothey A, Vauthey JN, Nagorney DM, McWilliams RR. Improved survival in metastatic colorectal cancer is associated with adoption of hepatic resection and improved chemotherapy. *J Clin Oncol.* 2009; 27:3677–3683.
3. Choti MA, Sitzmann JV, Tiburi MF, Sumetchotimetha W, Rangsri R, Schulick RD, Lillemoe KD, Yeo CJ, Cameron JL. Trends in long-term survival following liver resection for hepatic colorectal metastases. *Ann Surg.* 2002; 235:759–766.
4. Fong Y, Fortner J, Sun RL, Brennan MF, Blumgart LH. Clinical score for predicting recurrence after hepatic resection for metastatic colorectal cancer: analysis of 1001 consecutive cases. *Ann Surg.* 1999; 230:309–18.
5. Nordlinger B, Guiguet M, Vaillant JC, Balladur P, Boudjema K, Bachellier P, Jaeck D, and Association Française de Chirurgie. Surgical resection of colorectal carcinoma metastases to the liver. A prognostic scoring system to improve case selection, based on 1568 patients. *Cancer.* 1996; 77:1254–62.
6. Rubbia-Brandt L, Giostra E, Brezault C, Roth AD, Andres A, Audard V, Sartoretti P, Dousset B, Majno PE, Soubrane O, Chaussade S, Mentha G, Terris B. Importance of histological tumor response assessment in predicting the outcome in patients with colorectal liver metastases treated with neo-adjuvant chemotherapy followed by liver surgery. *Ann Oncol.* 2007; 18:299–304.
7. Parikh AA, Gentner B, Wu TT, Curley SA, Ellis LM, Vauthey JN. Perioperative complications in patients undergoing major liver resection with or without neoadjuvant chemotherapy. *J Gastrointest Surg.* 2003; 7:1082–1088.
8. Allen PJ, Kemeny N, Jarnagin W, DeMatteo R, Blumgart L, Fong Y. Importance of response to neoadjuvant chemotherapy in patients undergoing resection of synchronous colorectal liver metastases. *J Gastrointest Surg.* 2003; 7:109–15.
9. Spolverato G, Ejaz A, Azad N, Pawlik TM. Surgery for colorectal liver metastases: The evolution of determining prognosis. *World J Gastrointest Oncol.* 2013; 5:207–221.
10. Imai K, Allard MA, Castro Benitez C, Vibert E, Sa Cunha A, Cherqui D, Castaing D, Bismuth H, Baba H, Adam R. Nomogram for prediction of prognosis in patients with initially unresectable colorectal liver metastases. *Br J Surg.* 2016; 103:590–599.
11. Iwatsuki S, Dvorchik I, Madariaga JR, Marsh JW, Dodson F, Bonham AC, Geller DA, Gayowski TJ, Fung JJ, Starzl TE. Hepatic resection for metastatic colorectal adenocarcinoma: a proposal of a prognostic scoring system. *J Am Coll Surg.* 1999; 189:291–299.
12. Konopke R, Kersting S, Distler M, Dietrich J, Gastmeier J, Heller A, Kulisch E, Saeger HD. Prognostic factors and evaluation of a clinical score for predicting survival after resection of colorectal liver metastases. *Liver Int.* 2009; 29:89–102.

13. Nagashima I, Takada T, Matsuda K, Adachi M, Nagawa H, Muto T, Okinaga K. A new scoring system to classify patients with colorectal liver metastases: proposal of criteria to select candidates for hepatic resection. *J Hepatobiliary Pancreat Surg.* 2004; 11:79–83.
14. Sasaki K, Morioka D, Conci S, Margonis GA, Sawada Y, Ruzzenente A, Kumamoto T, Iacono C, Andreatos N, Guglielmi A, Endo I, Pawlik TM. The Tumor Burden Score: A New “Metro-ticket” Prognostic Tool For Colorectal Liver Metastases Based on Tumor Size and Number of Tumors. *Ann Surg.* 2016 Oct 19. [Epub ahead of print].
15. Rees M, Tekkis PP, Welsh FK, O’Rourke T, John TG. Evaluation of long-term survival after hepatic resection for metastatic colorectal cancer: a multifactorial model of 929 patients. *Ann Surg.* 2008; 247:125–135.
16. Brudvik KW, Jones RP, Giuliani F, Shindoh J, Passot G, Chung MH, Song J, Li L, Dagenborg VJ, Fretland AA, Rosok B, De Rose AM, Ardito F, et al. RAS Mutation Clinical Risk Score to Predict Survival After Resection of Colorectal Liver Metastases. *Ann Surg.* 2017 May 25. [Epub ahead of print].
17. Adam R, Delvart V, Pascal G, Valeanu A, Castaing D, Azoulay D, Giacchetti S, Paule B, Kunstlinger F, Ghemard O, Levi F, Bismuth H. Rescue surgery for unresectable colorectal liver metastases downstaged by chemotherapy: a model to predict long-term survival. *Ann Surg.* 2004; 240:644–657, 657–658.
18. Tanaka K, Adam R, Shimada H, Azoulay D, Levi F, Bismuth H. Role of neoadjuvant chemotherapy in the treatment of multiple colorectal metastases to the liver. *Br J Surg.* 2003; 90:963–969.
19. Akinwande O, Philips P, Scoggins CR, Kelly L, Tatum C, Hahl M, McMasters KM, Martin RC. Comparison of tumor response assessment methods in patients with metastatic colorectal cancer after locoregional therapy. *J Surg Oncol.* 2016; 113:443–448.
20. Grothey A, Hedrick EE, Mass RD, Sarkar S, Suzuki S, Ramanathan RK, Hurwitz HI, Goldberg RM, Sargent DJ. Response-independent survival benefit in metastatic colorectal cancer: a comparative analysis of N9741 and AVF2107. *J Clin Oncol.* 2008; 26:183–189.
21. Shindoh J, Loyer EM, Kopetz S, Boonsirikamchai P, Maru DM, Chun YS, Zimmiti G, Curley SA, Charnsangavej C, Aloia TA, Vauthey JN. Optimal morphologic response to preoperative chemotherapy: an alternate outcome end point before resection of hepatic colorectal metastases. *J Clin Oncol.* 2012; 30:4566–4572.
22. Chun YS, Vauthey JN, Boonsirikamchai P, Maru DM, Kopetz S, Palavecino M, Curley SA, Abdalla EK, Kaur H, Charnsangavej C, Loyer EM. Association of computed tomography morphologic criteria with pathologic response and survival in patients treated with bevacizumab for colorectal liver metastases. *JAMA.* 2009; 302:2338–2344.
23. Mise Y, Zimmiti G, Shindoh J, Kopetz S, Loyer EM, Andreou A, Cooper AB, Kaur H, Aloia TA, Maru DM, Vauthey JN. RAS mutations predict radiologic and pathologic response in patients treated with chemotherapy before resection of colorectal liver metastases. *Ann Surg Oncol.* 2015; 22:834–842.
24. Blazer DR, Kishi Y, Maru DM, Kopetz S, Chun YS, Overman MJ, Fogelman D, Eng C, Chang DZ, Wang H, Zorzi D, Ribero D, Ellis LM, et al. Pathologic response to preoperative chemotherapy: a new outcome end point after resection of hepatic colorectal metastases. *J Clin Oncol.* 2008; 26:5344–5351.
25. Tomlinson JS, Jarnagin WR, DeMatteo RP, Fong Y, Kornprat P, Gonen M, Kemeny N, Brennan MF, Blumgart LH, D’Angelica M. Actual 10-year survival after resection of colorectal liver metastases defines cure. *J Clin Oncol.* 2007; 25:4575–4580.
26. Adam R, Bhangui P, Poston G, Mirza D, Nuzzo G, Barroso E, Ijzermans J, Hubert C, Ruers T, Capussotti L, Ouellet JF, Laurent C, Cugat E, et al. Is perioperative chemotherapy useful for solitary, metachronous, colorectal liver metastases? *Ann Surg.* 2010; 252:774–787.
27. Nathan H, de Jong MC, Pulitano C, Ribero D, Strub J, Mentha G, Gigot JF, Schulick RD, Choti MA, Aldrighetti L, Capussotti L, Pawlik TM. Conditional survival after surgical resection of colorectal liver metastasis: an international multi-institutional analysis of 949 patients. *J Am Coll Surg.* 2010; 210:755–764, 764–766.
28. Reissfelder C, Rahbari NN, Koch M, Ulrich A, Pfeilschifter I, Waltert A, Muller SA, Schemmer P, Buchler MW, Weitz J. Validation of prognostic scoring systems for patients undergoing resection of colorectal cancer liver metastases. *Ann Surg Oncol.* 2009; 16:3279–3288.
29. Brudvik KW, Passot G, Vauthey JN. Colorectal Liver Metastases: A Changing Treatment Landscape. *J Oncol Pract.* 2016; 12:40–41.
30. Pollock CB, Shirasawa S, Sasazuki T, Kolch W, Dhillon AS. Oncogenic K-RAS is required to maintain changes in cytoskeletal organization, adhesion, and motility in colon cancer cells. *Cancer Res.* 2005; 65:1244–1250.
31. Serova M, Astorgues-Xerri L, Bieche I, Albert S, Vidaud M, Benhadji KA, Emami S, Vidaud D, Hammel P, Theou-Anton N, Gespach C, Faivre S, Raymond E. Epithelial-to-mesenchymal transition and oncogenic Ras expression in resistance to the protein kinase Cbeta inhibitor enzastaurin in colon cancer cells. *Mol Cancer Ther.* 2010; 9:1308–1317.
32. Therasse P, Arbuck SG, Eisenhauer EA, Wanders J, Kaplan RS, Rubinstein L, Verweij J, Van Glabbeke M, van Oosterom AT, Christian MC, Gwyther SG. New guidelines to evaluate the response to treatment in solid tumors. European Organization for Research and Treatment of Cancer, National Cancer Institute of the United States, National Cancer Institute of Canada. *J Natl Cancer Inst.* 2000; 92:205–216.