

Research article

Implementation of community-based adherence clubs for stable antiretroviral therapy patients in Cape Town, South Africa

Anna Grimsrud^{§,1}, Joseph Sharp², Cathy Kalombo³, Linda-Gail Bekker^{2,4} and Landon Myer¹

[§]**Corresponding author:** Anna Grimsrud, University of Cape Town, Office 5.47, Falmouth Building, Anzio Road, Cape Town, 7925, South Africa. Tel: +27 21 406 6747. (agrimsrud@gmail.com)

Abstract

Introduction: Community-based models of antiretroviral therapy (ART) delivery have been recommended to support ART expansion and retention in resource-limited settings. However, the evidence base for community-based models of care is limited. We describe the implementation of community-based adherence clubs (CACs) at a large, public-sector facility in peri-urban Cape Town, South Africa.

Methods: Starting in May 2012, stable ART patients were down-referred from the primary care community health centre (CHC) to CACs. Eligibility was based on self-reported adherence, > 12 months on ART and viral suppression. CACs were facilitated by four community health workers and met every eight weeks for group counselling, a brief symptom screen and distribution of pre-packed ART. The CACs met in community venues for all visits including annual blood collection and clinical consultations. CAC patients could send a patient-nominated treatment supporter (“buddy”) to collect their ART at alternate CAC visits. Patient outcomes [mortality, loss to follow-up and viral rebound (> 1000 copies/ml)] during the first 18 months of the programme are described using Kaplan–Meier methods.

Results and Discussion: From June 2012 to December 2013, 74 CACs were established, each with 25–30 patients, providing ART to 2133 patients. CAC patients were predominantly female (71%) and lived within 3 km of the facility (70%). During the analysis period, 9 patients in a CAC died (< 0.1%), 53 were up-referred for clinical complications (0.3%) and 573 CAC patients sent a buddy to at least one CAC visit (27%). After 12 months in a CAC, 6% of patients were lost to follow-up and fewer than 2% of patients retained experienced viral rebound.

Conclusions: Over a period of 18 months, a community-based model of care was rapidly implemented decentralizing more than 2000 patients in a high-prevalence, resource-limited setting. The fundamental challenge for this out of facility model was ensuring that patients receiving ART within a CAC were viewed as an extension of the facility and part of the responsibility of CHC staff. Further research is needed to support down-referral sooner after ART initiation and to describe patient experiences of community-based ART delivery.

Keywords: models of care; ART delivery; community-based; loss to follow-up; decentralization; task shifting.

Received 19 December 2014; **Revised** 13 March 2015; **Accepted** 22 April 2015; **Published** 27 May 2015

Copyright: © 2015 Grimsrud A et al; licensee International AIDS Society. This is an Open Access article distributed under the terms of the Creative Commons Attribution 3.0 Unported (CC BY 3.0) License (<http://creativecommons.org/licenses/by/3.0/>), which permits unrestricted use, distribution, and reproduction in any medium, provided the original work is properly cited.

Introduction

Models of care for antiretroviral therapy (ART) delivery have evolved considerably over the past decade of ART provision in resource-limited settings. Services have been decentralized from hospitals to primary care facilities and tasks shifted from doctors to nurses and community health workers (CHWs) [1]. However, despite these developments, it is estimated that 95% of HIV services are presently provided within health facilities [2,3]. To support the ambitious targets and accelerated pace of ART expansion and reduce congestion at busy health facilities, further adaptations and health systems changes are needed [3,4]. To this end, decentralizing at least 30% of HIV services into communities has been recommended [3].

Community-based models of care for stable patients present one model of decentralization, designed to make ART delivery more efficient for the health system and provide appropriate support to encourage long-term retention of

patients [5]. However, the evidence base for community-based models of care, where treatment, care and support is located outside of health facilities, is limited. In the recent systematic review on decentralization, the three community-based models of care were limited to programmes providing home-based ART delivery [6–10]. While the results suggest that community models can have comparable outcomes to facility-based models, the scalability of home-based ART models is debatable and such models do not encourage patient self-management, a key level of task shifting required for retention in care [11].

The adherence club model of care was designed to support ART maintenance for groups of stable patients in a CHW-facilitated model with peer-support and increased patient self-management [12,13]. The success of an early pilot project in Cape Town [14], led to the model of care being adopted and widely implemented by the City of Cape Town

and Western Cape Government Department of Health (DOH) [12,13]. The community health centre (CHC) in Gugulethu adapted the adherence club model to local conditions by shifting the service away from health facilities to be community based. Stable patients were down-referred to community-based adherence clubs (CACs) and managed by CHWs. Here we describe the implementation, early outcomes and lessons learned from the CACs given the limited evidence base for community-based models and the push to further decentralize ART delivery.

Methods

Adherence clubs were implemented within the Hannan Crusaid Treatment Centre (HCTC) at the Gugulethu CHC in Cape Town, South Africa. The ART programme at the HCTC is a well-characterized, large, public-sector service that has been described in detail previously [15–17]. The HCTC receives support from the Desmond Tutu HIV Foundation and peer counsellor support from the Sizophila programme [16,18]. In Table 1, the standard of ART care at the CHC is compared with the CAC model. Implementation of the CACs is described in detail covering the six core components of the WHO health systems framework [19].

CAC eligibility and referral

ART adherence clubs were designed to decongest facilities and support stable ART patients [12,13]. Stable patients were voluntarily down-referred to the CACs. Patients were considered “stable” if they were adherent on the same ART regimen for >12 months, had two consecutive undetectable (<400 copies/mL) viral loads and did not have any other medical conditions requiring more frequent follow-up. Individual patient counselling at the time of referral described the benefits of CAC model, the visit schedule and how to access clinical care outside of CAC visits as necessary.

CACs venues

The adherence club model was adapted to reduce congestion in the CHC and to provide accessible ART within the community. The first clubs met in a separate building at the CHC. Starting in May 2013, adherence clubs were transitioned from being facility-based to being located at community venues. From June 2013, the clubs were all CACs meeting at a community-based organization (CBO) facility approximately 300 m from the CHC. From April 2014, CACs relocated to a room within the municipal community centre located approximately 450 m from the CHC. Daily transportation by one of the CHC vehicles is provided for the CAC CHWs, the pre-packed ART, the CAC registers and, on a phlebotomy or clinical club day, the CAC nurse.

CAC operations

Recruitment for CACs began in May 2012 and the first club met in June 2012. Patients who met the CAC eligibility criteria were identified during their clinical consultation and referred to meet with a club CHW. Each club had approximately 25–30 patients who met every two months (eight weeks). At each CAC visit, there was a group counselling session, a brief symptom screening and distribution of ART, all completed in approximately 60 min. The group counselling sessions, facilitated by the CHW, focused on content relevant to stable patients on ART such as safe conception. The CHW weighed all patients and administered a brief screening questionnaire on systemic well-being. Annual visits for phlebotomy and clinical consultations took longer (maximum three hours) due to the time taken for each patient to be seen by the club nurse. At the four-month club visit monitoring blood samples were drawn and this was repeated annually. A clinical consultation with a nurse occurred at the six-month club visit and was repeated annually.

All of the CAC ART was pre-packed off-site at a central pharmacy. Patients received two months of pre-packed ART at their CAC visit. During the October/November visit, four months of pre-packed ART was distributed to CAC members

Table 1. Comparison of standard of care and CACs for the management of ART patients

| | Standard of care (CHC) | Community-based adherence clubs (CACs) |
|---|---|---|
| Setting | Clinic based | Community based |
| Patient profile | All ART patients | Stable patients |
| Key personnel | Doctors/nurses | CHW |
| Frequency of visits | 2 monthly | 2 monthly |
| Frequency of clinical consultations | 2 monthly (every visit) | 12 monthly |
| Location of clinical consultations | CHC | Community based |
| Emphasis of patient contacts | Detecting clinical complications | Treatment adherence, patient wellness |
| Units of care | Individual patient | Groups of 25–30 |
| Peer-based support | No emphasis | Strong emphasis |
| Patient self-management | Minimal emphasis | Strong emphasis |
| Frequency of laboratory monitoring | 6–12 monthly | 12 monthly |
| Management of clinical complications | On-site | Up-referral to CHC |
| ART packing and dispensing | Packed at the CHC pharmacy, dispensed from pharmacy | Pre-packed by central dispensing unit, dispensed at CAC visit |
| Treatment buddy | Patients attend the CHC and collect ART themselves | ART can be collected by a treatment buddy |

to support migration over the holiday period [20]. Therefore, most CACs met five times per year. The group counselling session in the October/November CAC visit focused on how to ensure adherence to ART when travelling and how to access ART elsewhere should a patient not return to Gugulethu for any reason.

Patients who were late for their CAC visit had a grace period of five working days to collect their ART and remain in a club. CAC patients who were late for their CAC would return to the CAC CHWs at the CHC for either collection of their ART if they were within the grace period or up-referral to the CHC if they were later than five working days. Patients were also up-referred if they were no longer stable. Instability included development of a condition that required more frequent clinical consultations (e.g. tuberculosis), the need to switch regimens or viral rebound.

A patient-nominated treatment supporter or “buddy” could be sent to every alternate CAC visit to collect the CAC patient’s ART. The buddy would arrive at the CAC with the patient’s clinic card, collect their ART and the visit would be recorded in the CAC register as a buddy collected visit in place of patient’s weight and symptom screen. Patients could nominate more than one buddy and the identity of the buddy was not routinely collected.

CAC monitoring and evaluation

CAC data were recorded in a paper register with one register per CAC. At each CAC visit, the weight of each patient and results of the brief symptom screen were recorded. A summary of the CAC data aggregated at the level of the CAC was completed by the CHW following each CAC visit and monthly group level reports were compiled for the DOH. Standard individual patient files at the CHC of CAC members were only used at the annual clinical visit. When a patient was down-referred to a CAC, the CAC number was placed on the CHC patient file so that clinicians could determine where the patient was receiving ART.

Human resources and management

CACs were CHW-managed with support from clinical staff at the CHC. The CHWs had varying levels of education and experience as part of the Sizophila peer-counselling programme [16,18]. Each of the four CHWs were responsible for managing between 12 and 18 CACs. The specific responsibilities of a CAC CHW included calling all CAC patients before their first CAC visit, completing club registers, compiling CAC statistics monthly, completing the brief assessment of CAC patients (weighing and symptom screening) on their CAC day, facilitating the group counselling session on CAC days, checking with the pharmacist to see if pre-packed ART was ready for each CAC patient, tracing any CAC patients who did not arrive and recording blood results in the CAC registers.

A professional nurse was assigned as the CAC nurse rotating on a monthly basis. The CAC nurse was at the community venue for blood and clinical CAC visits approximately two days per week. If a CAC patient needed to see a clinician on their CAC visit date, the patient was referred to the CHC and had priority access to the CAC nurse.

One of the pharmacists at the CHC was responsible for the CACs. The CAC Pharmacist ensured that there was a valid

script for each CAC patient and that the scripts included the CAC number and first visit date for dispensing. The central pharmacy delivered the pre-packed medication parcels to the CHC pharmacy three days before the CAC visit date. On the day of the CAC, the pharmacist provided all the pre-packed ART for the CAC to the CHW for distribution to CAC patients.

Management of the CACs was integrated within the CHC management. The CHC clinical manager provided oversight with support from the CHC facility manager. No additional financing was required during the implementation of CACs. In December 2013, a clubs manager was appointed from the existing CAC CHW team and a new CHW was recruited to join the CAC. This position was created to support the growing programme and alleviate the administrative CAC responsibilities previously completed by the clinical manager of the CHC.

Analysis

Ethical approval for the collection of routine clinic data and data on adherence clubs was obtained from the Human Research Ethics Committee (HREC) in the Faculty of Health Sciences at the University of Cape Town (HREC Refs 359/2002 and 383/2012). Written informed consent was provided by all enrolled patients for anonymous clinical data to be recorded and analyzed. Data were analyzed using STATA 13.0 (STATA Corporation, College Station, Texas, USA). All patients down-referred to an adherence club between May 2012 and December 2013 were included in the analysis. Patients entered the analysis on the date of their first club visit. Patient outcomes were assessed at the end of 2013 (analysis closure). The primary outcome of interest was loss to follow-up (LTFU) with secondary outcomes of mortality and viral rebound also reported. LTFU was defined as having no contact at a CAC or the CHC in the first 12 weeks of 2014. For patients defined as LTFU, the date of last contact was the LTFU date. Viral rebound was defined as having a single viral load measure of >1000 copies/ml after suppression. Patients were censored at the date of death, transfer or LTFU.

The number of new CAC patients and CACs were reported by month. Median year of club initiation is reported biannually and described by pre-ART characteristics. Patient characteristics at ART initiation (sex, age, CD4 cell count, viral load and year of initiation), CAC initiation (age, CD4 cell count, time on ART) and demographics (distance from clinic, employment status) at CAC initiation are described and summarized using appropriate summary statistics. Median time to CAC initiation was calculated by pre-ART characteristics with interquartile ranges (IQRs) and Wilcoxon rank-sum tests used to investigate associations. Time to event analysis was conducted using Kaplan–Meier methods. Kaplan–Meier graphs of the outcomes (mortality, LTFU, viral rebound) are presented as proportions and reported every three months.

Results

Over an 18-month period, 2113 patients were decentralized to one of 74 CACs (Figure 1). During this same period, 2776 patients were initiated onto ART at the CHC. By December 2013, approximately one-third of the CHC patients were managed in a CAC. CAC patients were predominantly female

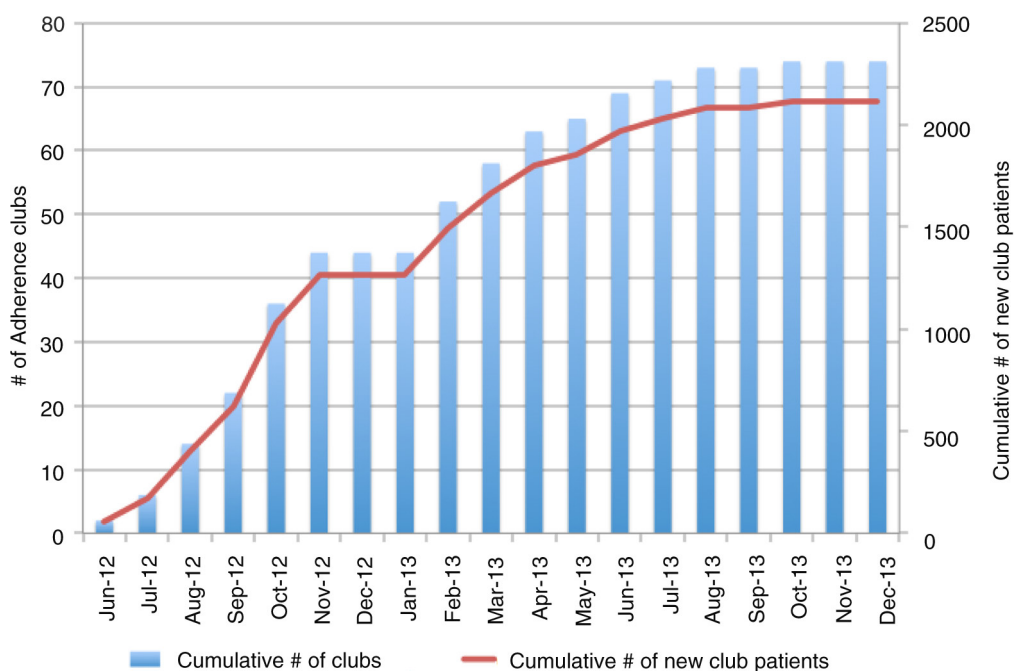


Figure 1. Implementation of community-based adherence clubs between June 2012 and December 2013.

(71%), lived within 3 km of the CHC (72%) and unemployed (58%) (Table 2). The median pre-ART CD4 cell count was 134 cells/ μ l and 32% of CAC patients had been on ART for six years or longer at the time of joining a CAC. At the time of joining a CAC, the median age was 39 years and the median CD4 cell count was 517 cells/ μ l.

The median time from ART initiation to CAC uptake was 4.4 years (IQR 2.5–6.6) (Table 3). For CAC patients who initiated ART in 2011 and 2012 when ACs were available, time to CAC initiation was 1.6 (IQR 1.4–1.9) and 1.2 (IQR 1.1–1.3) years, respectively. The median year of ART initiation among CAC patients increased from 2007 (IQR: 2005–2009) among those joining a CAC during 2012, to 2009 (IQR: 2006–2011) in the first half of 2013 and 2011 (IQR: 2010–2012) and in the latter half of 2013. The median time since first suppressed viral load also changed over time. Patients joining a CAC during 2012 had their first viral load 4.5 years before (IQR: 2.5–6.4), compared to 3.3 years among those joining a CAC in the first half of 2013 (IQR: 1.0–6.0) and 2.1 years among those joining a CAC in the latter half of 2013 (1.2–3.0) (results not shown).

During the study period, nine patients in a CAC died (<0.1%) (Figure 2a), 53 were up-referred to the CHC for clinical conditions (0.3%) and 573 CAC patients sent a buddy to at least one club visit (27.1%). Of those 16–24 years of age at club initiation, 13% sent a buddy to at least one club visit compared to 28% among patients 25–34 years of age, 30% among patients 35–44 years of age and 21% among patients 45 years or older at club initiation (p -value <0.001). LTFU among CAC patients was 2.6% (95% CI 2.0–3.4), 3.9% (95% CI 3.1–4.8) and 6.2% (95% CI 5.1–7.4) at months 6, 9 and 12, respectively (Figure 2b, Table 4). Kaplan–Meier estimates of viral rebound were 1.4% (95% CI 1.0–2.0) at six months and 1.7% (95% CI 1.2–2.4) at 12 months (Figure 2c, Table 4).

Overall retention on ART was 97.2% (95% CI 95.4–97.8) at six months and 93.5% at 12 months (95% CI 92.2–94.5).

Discussion

Over a period of 18 months, more than 2000 stable ART patients were successfully decentralized from a doctor-driven primary health care clinic to a community-based model of care where they were managed by four CHWs. We adapted the adherence club model to be community-based with all visits occurring out of the facility. CAC patients accessed ART and received annual clinical consults in the community, thus decongesting the primary health care facility. The size and scale up of the CAC model is unprecedented, with implementation occurring more rapidly and the volume of patients much larger than previous models of care described [14,21].

This model of care exemplifies the substantial paradigm shift in ART delivery over the past decade from doctor-led facility-based care towards decentralization of care and task shifting of patient care responsibilities. When ART became publically available in 2004, programmes were largely individualized, hospital based and doctor led [22]. In South Africa, task shifting has included increasing the number of nurses trained to initiate ART from 250 in February 2010 to 23,000 by May 2013 [23]. Concurrently, ART services have been increasingly decentralized with more than 3500 facilities supporting ART provision by mid-2013 [23,24]. The findings of our study highlight that further decentralized community-based models with task shifting to CHWs can successfully support ART maintenance and encourage patient self-management. Increasing patient self-management is crucial for ART programmes to expand and for HIV to be successfully managed as a chronic condition [25].

Patients in the CACs had high levels of retention and virologic suppression. At 12 months, retention on ART was

Table 2. Characteristics and demographics of community-based adherence club patients pre-ART and at time of club start

| | Adults (≥ 16 years) |
|---|---------------------|
| | <i>n</i> = 2113 |
| Gender, <i>n</i> (%) | 2113 (100) |
| Female, <i>n</i> (%) | 1489 (70.5) |
| Age at club start (years), median (IQR) | 38.8 (34.0–44.5) |
| Age categories at club start (years), <i>n</i> (%) | |
| 16–24 | 38 (1.8) |
| 25–34 | 593 (28.1) |
| 35–44 | 974 (46.1) |
| ≥ 45 | 508 (24.0) |
| CD4 cell count at club start (cells/μl), <i>n</i> (%) | 2109 (99.8) |
| < 200 | 49 (2.3) |
| 200–399 | 502 (23.8) |
| 400–599 | 846 (40.1) |
| 600–799 | 439 (20.8) |
| ≥ 800 | 272 (12.9) |
| Median (IQR) | 517 (396–669) |
| Pre-ART Viral load, log ₁₀ copies/ml, <i>n</i> (%) | 1588 (75.2) |
| Median (IQR) | 4.8 (4.3–5.2) |
| Years on ART at club start, median (IQR) | 4.6 (2.5–6.6) |
| < 1.5 years | 211 (10.0) |
| 1.5–3 years | 465 (22.0) |
| 3–4.5 years | 407 (19.3) |
| 4.5–6 years | 347 (16.4) |
| 6–7.5 years | 407 (19.3) |
| ≥ 7.5 years | 276 (13.1) |
| Distance from the CHC, <i>n</i> (%) | 1392 (65.9) |
| < 1 km | 463 (33.2) |
| 1–3 km | 540 (38.9) |
| 3–5 km | 254 (19.0) |
| > 5 km | 12 (9.1) |

94%, LTFU was 6% and 2% of patients had experienced viral rebound. While retention in care was less than the 97% reported from the pilot study of facility-based adherence clubs [14], these are promising outcomes. Limited outcome data are available from other community-based programmes with most community models providing home-based ART delivery [26,27]. The exception is the community adherence group (CAG) model in Mozambique with 98% retention in care after 12 months [21]. Retention at 12 months in traditional facility-based models of care is estimated to be 80% [28], but this group is not comparable given that CACs were restricted to stable patients.

Our findings should be considered in light of a number of limitations. It is difficult to determine the generalizability of our findings as the context in which these innovative models of care are implemented is of critical importance. We implemented a novel model of care in a high-prevalence site with an existing CHW programme with considerable NGO support. In addition, the site had a well-functioning pharmacy and logistics system without ART stock-outs during the study

Table 3. Median time to community-based adherence club initiation by pre-ART characteristics

| Pre-ART characteristic | Median time, years (IQR) (<i>n</i> = 2113) | <i>p</i> |
|---------------------------|---|----------|
| Overall | 4.4 (2.5–6.6) | |
| Gender | | |
| Females | 4.5 (2.5–6.7) | 0.262 |
| Males | 4.3 (2.4–6.5) | |
| Age (years) | | |
| 16–24 | 4.1 (2.5–6.4) | 0.013 |
| 25–34 | 4.8 (2.6–6.7) | |
| 35–44 | 4.2 (2.5–6.6) | |
| ≥ 45 | 3.8 (2.3–6.2) | |
| CD4 cell count (cells/μl) | | |
| < 50 | 5.9 (3.5–7.2) | < 0.001 |
| 50–99 | 5.4 (2.3–7.1) | |
| 100–199 | 4.8 (2.9–6.5) | |
| ≥ 200 | 2.7 (1.7–4.8) | |
| Missing | 3.7 (1.8–6.6) | |
| Year of initiation | | |
| 2002–2004 | 8.6 (8.2–9.2) | < 0.001 |
| 2005–2007 | 6.4 (5.7–7.1) | |
| 2008–2010 | 3.3 (2.6–4.0) | |
| 2011–2012 | 1.4 (1.2–1.7) | |

period. It is difficult to gauge the transferability of our model to other settings, but our results highlight that its feasibility should be considered elsewhere. Furthermore, flexibilities within the model allow for adaptations to local contexts. Models of ART delivery are not a one-size-fits-all solution [5]. Adaptations to local context will therefore be necessary for broader implementation. The focus of this analysis was limited to early outcomes and more research is necessary to assess factors associated with retention in this model of care and long-term outcomes of decentralized patients. In addition, the impact of decentralizing patients on the workload of the CHC is not assessed.

We determined key factors and challenges that contributed to implementation success (Table 5). A cohesive team comprising the CHWs, pharmacist and clinic management worked as a collective despite having different line managers. It was essential that all clinic staff understood the benefits of the model and trusted that patients could be successfully managed outside of the traditional model of care and clinic facility. Second, policies allowing ART to be distributed within the community were agreed upon by the provincial, sub-district and facility teams and could therefore be used. Policies that impeded implementation were allowing only two months of ART to be dispensed per visit and mandating rescripting of ART every six months. Furthermore, CACs received a reliable supply of ART. Without a reliable drug supply, patients may not trust a community model of care [13]. The CHWs involved in CACs were part of a well-established cadre of staff at the CHC and played a pivotal role in providing quality treatment support to CAC members.

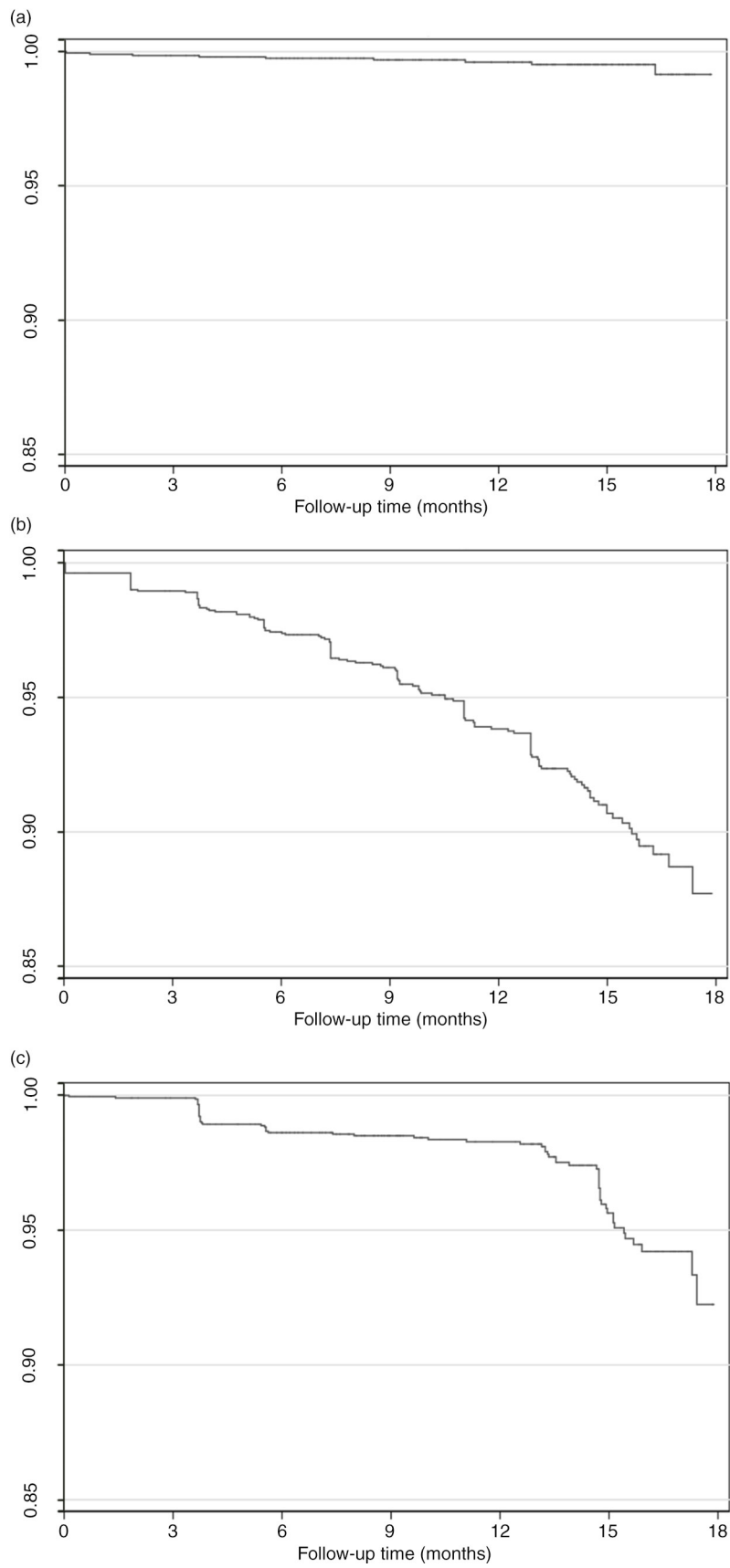


Figure 2. Kaplan–Meier plots of community-based adherence clubs: (a) mortality, (b) loss to follow-up and (c) viral rebound.

Table 4. Kaplan–Meier estimates of mortality, loss to follow-up and viral rebound by duration of follow-up after community-based adherence club initiation^a

| Duration of follow-up | n (%) | Mortality % (95% CI) | Loss to follow-up % (95% CI) | Viral rebound ^b % (95% CI) |
|-----------------------|-------------|----------------------|------------------------------|---------------------------------------|
| 3 months | 2078 (98.3) | 0.1 (0.1–0.4) | 1.0 (0.7–1.6) | 0.1 (0.1–0.4) |
| 6 months | 1925 (91.1) | 0.2 (0.1–0.6) | 2.6 (2.0–3.4) | 1.4 (1.0–2.0) |
| 9 months | 1602 (75.8) | 0.3 (0.1–0.7) | 3.9 (3.1–4.8) | 1.5 (1.1–2.1) |
| 12 months | 1170 (55.4) | 0.4 (0.2–0.8) | 6.2 (5.1–7.4) | 1.7 (1.2–2.4) |
| 15 months | 572 (27.1) | 0.5 (0.2–1.0) | 9.3 (9.9–11.0) | 4.4 (3.3–5.8) |
| 18 months | 63 (3.0) | 0.9 (0.3–2.2) | 12.3 (9.7–15.5) | 7.8 (5.2–11.6) |

^aEstimates are from time of community-based adherence club initiation; ^bViral rebound is defined as a single viral load measure above 1000 copies/ml after suppression.

A fundamental factor to the success of the CACs was that patients receiving ART within the community were regarded as an extension of the CHC with the facility continuing to assume full responsibility and accountability for CAC patients' care [5]. Since the CHC did not routinely see the patients receiving ART in the community-based model, these patients could easily be forgotten or dismissed as not the responsibility of the CHC. It was difficult to engage staff that were not dedicated CAC staff to support CAC patients in CAC activities such as rescripting. This echoes challenges previously described in the literature where health personnel are trained within a hierarchical framework of health care delivery and do not provide a supportive environment for CHWs [29,30]. Ongoing and sustained efforts are needed to emphasize that CAC patients continue to be CHC patients.

Our experience of implementing community-based ART delivery was not without challenges (Table 5). The location of the CACs within the community had to shift from a CBO facility to a municipal community centre. A long-term standing agreement with the municipal venue is still underway requiring negotiation at the city and the community levels. While in principle the DOH is supportive of expanding community-based ART delivery, in practice there have been significant barriers to expansion. A unique challenge of community-based delivery models comes from the physical location outside of existing health facilities. Any upgrades or

maintenance at community venues is not covered within DOH budgeting and it is unclear if extending responsibilities of staff to outside of the CHC is within their contractual agreements. Being located outside of the primary care facility also provides daily logistical challenges due to transportation of materials between the community facility and the primary care facility.

Adaptation of the CAC model will be necessary for further implementation. The criteria for inclusion in CACs requires critical appraisal to determine the optimal selection conditions for CAC inclusion. The frequency of CAC visits, the window period for late ART collection by CAC patients and the type of symptom screening completed at CAC visits can all be adapted to align with local policy. While we utilized a central pharmacy for the CAC ART, this component of the model could be adapted with ART packing completed at the facility level. It is recommended that the CAC model be phased in over time, allowing for both patients and staff to see the benefits while being reassured that the model can adequately support stable patients without undue risk. It is crucial that the CACs and all community-based delivery models be viewed not just as a response to the high patient volume but as beneficial and even preferable to patients [5]. Community-based models of care allow patients to return to normal life and increase their self-management, thus increasing the effectiveness of ART delivery [22,31].

Table 5. Key factors and challenges to implementation success of the CAC model

| | Factor for implementation success | Challenge for implementation success |
|---|---|--|
| Community-based models as an extension of the facility | Strong bi-directional referral pathways between facility and community-based models | Patients in community-based models not viewed as the responsibility of the facility (i.e. reluctance to assist with rescripting of CAC patients) |
| Location | Stable patients managed outside of health care facility | Ensuring access to a clean and appropriate community-based facility |
| Staffing | Cohesive, multidisciplinary team including recognized cadre of CHWs | Different categories of staff have different line managers |
| ART distribution | ART distribution by CHWs supported by the pharmacy | Policies regarding dispensing and distribution (i.e. only two months of ART allowed to be dispersed per visit) |
| ART supply | Reliable, uninterrupted supply | Frequent shortages in many areas of the country |
| Resources for community-based ART delivery | CHWs using their personal cell phones | Limited resources within the community venue and distance to CHC for supplies |

Conclusions

While there is an urgent need for ongoing research to optimize community-based ART delivery, our implementation findings support continued expansion of community-based models of ART delivery in high-prevalence, resource-limited settings. The adherence club model was successfully adapted, decentralized and implemented to provide community-based care, and our novel model supported ART maintenance exclusively within the community. Additional data and shared experiences from innovative community-based models of care are needed to support long-term ART retention as ART cohorts in resource-limited settings continue to expand and mature.

Authors' affiliations

¹Division of Epidemiology & Biostatistics, School of Public Health & Family Medicine, University of Cape Town, Cape Town, South Africa; ²The Desmond Tutu HIV Centre, Institute of Infectious Disease and Molecular Medicine, University of Cape Town, Cape Town, South Africa; ³Gugulethu Community Health Centre, Provincial Government of the Western Cape, Cape Town, South Africa; ⁴Department of Medicine, University of Cape Town, Cape Town, South Africa

Competing interests

The authors have no competing interests to declare.

Authors' contributions

AG was responsible for the statistical analysis and writing of the manuscript. AG, JS, CK, LGB and LM contributed to the plan of analysis and interpretation of the data. All authors commented on drafts of the manuscript and approved the final version.

Acknowledgements

We thank Hlengani Mathema and Mina Kazemi for their contributions to the Gugulethu adherence club programme. We also thank the staff of the Gugulethu CHC and adherence clubs. Thanks to the DTHF for ongoing support of the Hannan Crusaid Treatment Centre and Sizophila Counsellors. We also thank Beth Harley and Lynne Wilkinson for their feedback on the early drafts of this manuscript. Finally, thanks to the patients of the Gugulethu adherence club programme.

Funding

AG was supported by the Canadian Institutes of Health Research (CIHR) and the South African Centre for Epidemiological Modelling and Analysis (SACE-MA). LM is supported by an International Leadership Award from the Elizabeth Glaser Pediatric Foundation.

References

1. Ford N, Calmy A, Mills EJ. The first decade of antiretroviral therapy in Africa. *Global Health*. 2011;7:33.
2. Easterbrook PJ, Irvine CJ, Vitoria M, Shaffer N, Muhe LM, Negussie EK, et al. Developing the 2013 WHO consolidated antiretroviral guidelines. *AIDS*. 2014; 28:S93–100.
3. UNAIDS. Fast-track: ending the AIDS epidemic by 2030. Geneva: UNAIDS; 2014.
4. Deeks SG, Lewin SR, Havlir DV. The end of AIDS: HIV infection as a chronic disease. *Lancet*. 2013;382(9903):1525–33.
5. World Health Organization. March 2014 supplement to the 2013 consolidated guidelines on the use of antiretroviral drugs for treating and preventing HIV infection. Recommendations for a public health approach. Geneva: WHO; 2014.
6. Kredt T, Ford N, Adeniyi FB, Garner P. Decentralising HIV treatment in lower- and middle-income countries. *Cochrane Database Syst Rev*. 2013;6:CD009987.
7. Amuron B, Levin J, Birunghi J, Namara G, Coutinho A, Grosskurth H, et al. Mortality in an antiretroviral therapy programme in Jinja, south-east Uganda: a prospective cohort study. *AIDS Res Ther*. 2011;8:39.
8. Jaffar S, Amuron B, Foster S, Birungi J, Levin J, Namara G, et al. Rates of virological failure in patients treated in a home-based versus a facility-based HIV-care model in Jinja, southeast Uganda: a cluster-randomised equivalence trial. *Lancet*. 2009;374(9707):2080–9.
9. Kipp W, Konde-Lule J, Rubaale T, Okech-Ojony J, Alibhai A, Saunders DL. Comparing antiretroviral treatment outcomes between a prospective community-based and hospital-based cohort of HIV patients in rural Uganda. *BMC Int Health Hum Rights*. 2011;11(Suppl 2):S12.

10. Selke HM, Kimaiyo S, Sidle JE, Vedanthan R, Tierney WM, Shen C, et al. Task-shifting of antiretroviral delivery from health care workers to persons living with HIV/AIDS: clinical outcomes of a community-based program in Kenya. *J Acquir Immune Defic Syndr*. 2010;55(4):483–90.
11. Gilks CF, Crowley S, Ekpini R, Gove S, Perriens J, Souteyrand Y, et al. The WHO public-health approach to antiretroviral treatment against HIV in resource-limited settings. *Lancet*. 2006;368(9534):505–10.
12. Wilkinson LS. ART adherence clubs: a long-term retention strategy for clinically stable patients receiving antiretroviral therapy. *S Afr J HIV Med*. 2013;14(2):48–50.
13. Bemelmans M, Baert S, Goemaere E, Wilkinson L, Vandendyck M, van Cutsem G, et al. Community-supported models of care for people on HIV treatment in sub-Saharan Africa. *Trop Med Int Health*. 2014;19(8):968–77.
14. Luque-Fernandez MA, Van Cutsem G, Goemaere E, Hilderbrand K, Schomaker M, Mantangana N, et al. Effectiveness of patient adherence groups as a model of care for stable patients on antiretroviral therapy in Khayelitsha, Cape Town, South Africa. *PLoS One*. 2013;8(2):e56088.
15. Bekker L-G, Myer L, Orrell C, Lawn S, Wood R. Rapid scale-up of a community-based HIV treatment service: programme performance over 3 consecutive years in Gugulethu, South Africa. *S Afr Med J*. 2006;96:315–20.
16. Bekker LG, Orrell C, Reader L, Matoti K, Cohen K, Martell R, et al. Antiretroviral therapy in a community clinic—early lessons from a pilot project. *S Afr Med J*. 2003;93:458–62.
17. Grimsrud A, Kaplan R, Bekker LG, Myer L. Outcomes of a nurse-managed service for stable HIV-positive patients in a large South African public sector antiretroviral therapy programme. *Trop Med Int Health*. 2014;19(9):1029–39.
18. Lawn SD, Kaplan R, Wood R, Bekker LG. Promoting retention in care: an effective model in an antiretroviral treatment service in South Africa. *Clin Infect Dis*. 2007;45(6):803.
19. World Health Organization. Everybody's business: strengthening health systems to improve health outcomes: WHO's framework for action. Geneva: World Health Organization; 2007.
20. Grimsrud A, Patten G, Sharp J, Myer L, Wilkinson L, Bekker LG. Extending dispensing intervals for stable patients on ART. *J Acquir Immune Defic Syndr*. 2014;66(2):e58–60.
21. Decroo T, Koole O, Remartinez D, dos Santos N, Dezembro S, Jofrisse M, et al. Four-year retention and risk factors for attrition among members of community ART groups in Tete, Mozambique. *Trop Med Int Health*. 2014;19(5): 514–21.
22. Ford N, Mills EJ. Simplified ART delivery models are needed for the next phase of scale up. *PLoS Med*. 2011;8(7):e1001060.
23. Motsoaledi A. Health budget speech by Dr Aaron Motsoaledi, MP, Minister of Health, National Assembly. 2013 [cited 2014 Nov 17]. Available from: <http://www.pmg.org.za/briefing/20130515-health-ministers-budget-vote-speech-responses-ancifp-and-da>
24. Bekker LG, Venter F, Cohen K, Goemaere E, Van Cutsem G, Boule A, et al. Provision of antiretroviral therapy in South Africa: the nuts and bolts. *Antivir Ther*. 2014;19(Suppl 3):105–16.
25. van Olmen J, Ku GM, Bermejo R, Kegels G, Hermann K, Van Damme W. The growing caseload of chronic life-long conditions calls for a move towards full self-management in low-income countries. *Global Health*. 2011;7:38.
26. Decroo T, Rasschaert F, Telfer B, Remartinez D, Laga M, Ford N. Community-based antiretroviral therapy programs can overcome barriers to retention of patients and decongest health services in sub-Saharan Africa: a systematic review. *Int Health*. 2013;5(3):169–79.
27. Kredt T, Adeniyi FB, Bateganya M, Pienaar ED. Task shifting from doctors to non-doctors for initiation and maintenance of antiretroviral therapy. *Cochrane Database Syst Rev*. 2014;7:CD007331.
28. Fox MP, Rosen S. Patient retention in antiretroviral therapy programs up to three years on treatment in sub-Saharan Africa, 2007–2009: systematic review. *Trop Med Int Health*. 2010;15:1–15.
29. Lehmann U, Saunders D. Community health workers: what do we know about them? Geneva: World Health Organization; 2007.
30. Rabkin M, El-Sadr WM. Why reinvent the wheel? Leveraging the lessons of HIV scale-up to confront non-communicable diseases. *Glob Public Health*. 2011;6(3):247–56.
31. Alamo ST, Colebunders R, Ouma J, Sunday P, Wagner G, Wabwire-Mangen F, et al. Return to normal life after AIDS as a reason for lost to follow-up in a community-based antiretroviral treatment programme. *J Acquir Immune Defic Syndr*. 2012;60(2):e36–45.