

Erratum: Predicting Liver-Related Events Using Transient Elastography in Chronic Hepatitis C Patients with Sustained Virological Response

Hye Won Lee^{1,2}, Young Eun Chon^{1,2}, Seung Up Kim^{1,2,3}, Beom Kyung Kim^{1,2,3}, Jun Yong Park^{1,2,3}, Do Young Kim^{1,2,3}, Sang Hoon Ahn^{1,2,3,4}, Kyu Sik Jung^{1,2}, Young Nyun Park⁵, and Kwang-Hyub Han^{1,2,3,4}

¹Department of Internal Medicine, ²Institute of Gastroenterology, ³Liver Cirrhosis Clinical Research Center, ⁴Brain Korea 21 Project for Medical Science, and ⁵Department of Pathology, Yonsei University College of Medicine, Seoul, Korea

<http://dx.doi.org/10.5009/gnl15021>

Gut Liver 2016;10(3):429-436.

In the version of this article initially published, Figures 2 and 3 were incorrectly reproduced in the publishing process. The publisher wishes to apologize for any inconvenience caused.

On the pages 432 and 434, figures should be corrected as following.

From:

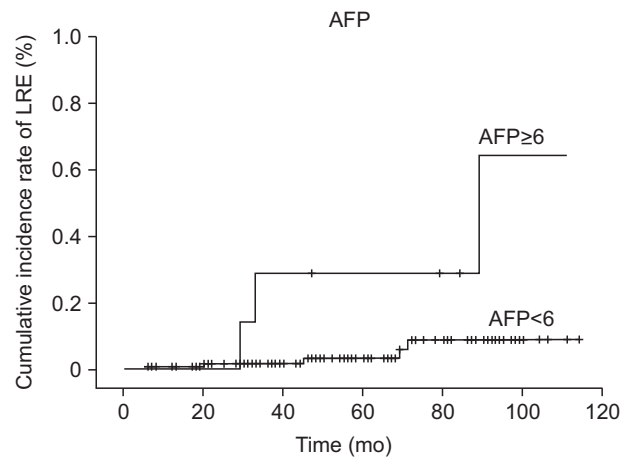


Fig. 2. Cumulative incidence rates of liver-related event (LRE) development. The cumulative incidence rates of LRE development at 1, 2, and 3 years were 0.5%, 1.1%, and 2.1%, respectively. AFP, α -fetoprotein.

To:

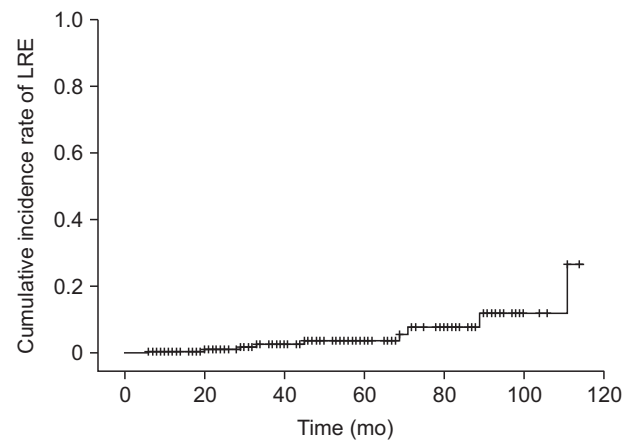


Fig. 2. Cumulative incidence rates of liver-related event (LRE) development. The cumulative incidence rates of LRE development at 1, 2, and 3 years were 0.5%, 1.1%, and 2.1%, respectively.

To:

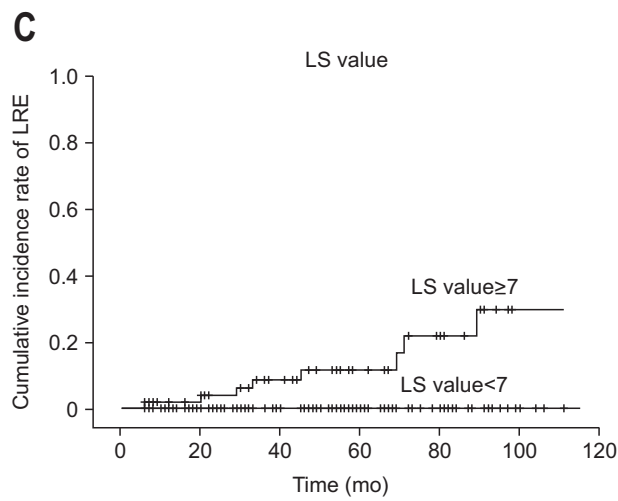
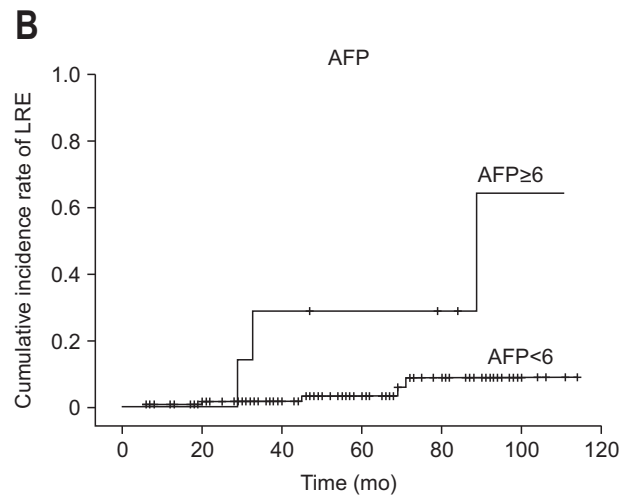
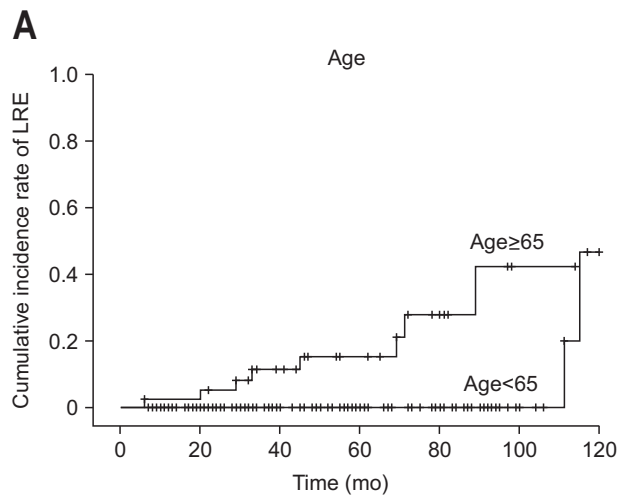


Fig. 3. Cumulative incidence rates of liver-related event (LRE) development based on stratified age and liver stiffness values. The cumulative incidence rates of LRE development increased significantly in older patients (A), those with higher α -fetoprotein (AFP) levels (B), and those with higher liver stiffness (LS) values at sustained virological response (C) (log-rank test, all $p < 0.05$).

From:

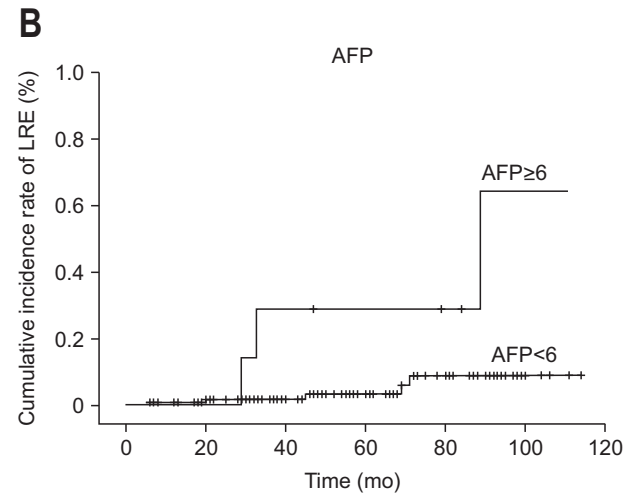
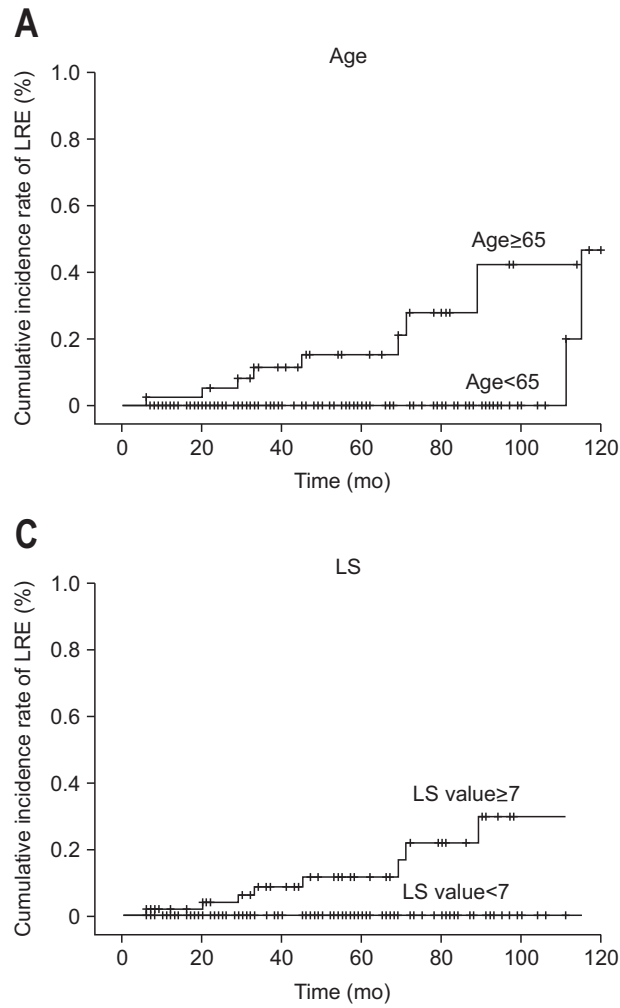


Fig. 3. Cumulative incidence rates of liver-related event (LRE) development based on stratified age and liver stiffness values. The cumulative incidence rates of LRE development increased significantly in older patients (A), those with higher α -fetoprotein (AFP) levels (B), and those with higher liver stiffness (LS) values at sustained virological response (C) (log-rank test, all $p<0.05$).