

Research Paper

O Blood Type Is Associated with Unfavorable Distant-metastasis-free Survival in Female Patients with Nasopharyngeal Carcinoma: A Retrospective Study of 2439 Patients from Epidemic Area

Guan-Nan Wang^{1,2*}, Shu Zhou^{1,2*}, Chen Chen^{1,2}, Hui Chang^{1,2}, Yalan Tao^{1,2}, Shan Liu^{1,2}, Xiao-Hui Wang^{1,2}, Wen-Wen Zhang^{1,2}, Yang Liu^{1,2}, Song-Ran Liu^{1,2}, Shi-Rong Ding^{1,2}, Xin Yang^{1,2}, Zheng-Qian Ye^{1,2}, Yi-Feng Gao³, Yun-Fei Xia^{1,2}✉

1. State Key Laboratory of Oncology in South China, Collaborative Innovation Center for Cancer Medicine, Guangdong Key Laboratory of Nasopharyngeal Carcinoma Diagnosis and Therapy, Sun Yat-sen University Cancer Center, Guangzhou 510060, P. R. China.
2. Department of Radiation Oncology, Sun Yat-sen University Cancer Center, Guangzhou 510060, P. R. China.
3. Zhongshan School of Medicine, Sun Yat-sen University, Guangzhou 510080, P. R. China.

*These authors contributed equally to this work

✉ Corresponding author: Yun-Fei Xia, State Key Laboratory of Oncology in South China; Department of Radiation Oncology, Sun Yat-sen University Cancer Center, 651 Dongfeng Road East, Guangzhou 510060, People's Republic of China. Tel: 86-20-87343169; Fax: 86-20-87343294; Email: xiayf@sysucc.org.cn

© Ivyspring International Publisher. This is an open access article distributed under the terms of the Creative Commons Attribution (CC BY-NC) license (<https://creativecommons.org/licenses/by-nc/4.0/>). See <http://ivyspring.com/terms> for full terms and conditions.

Received: 2018.07.08; Accepted: 2019.01.02; Published: 2019.01.30

Abstract

Purpose: To identify the association between ABO blood type and the survivals in nasopharyngeal carcinoma patients.

Patients and methods: We retrospectively analyzed 2439 consecutive non-metastasis nasopharyngeal carcinoma patients between January 2001 and December 2004 at the Sun Yat-sen University Cancer Center. Survival outcomes were compared using Kaplan-Meier method. Univariate and multivariate analysis was performed by Cox regression model. Chi-square test was performed to compare categorical variables.

Results: In the whole patients, compared with non-O blood type (A, B, and AB) patients, O blood type patients had significantly lower 5-year distant metastasis-free survival (DMFS) (adjusted hazard ratio (aHR)= 1.268, 95% CI 1.010-1.592, P=0.041). Moreover, we observed in female patients, O blood type patients had significantly lower 5-year overall survival (OS), disease-specific survival (DSS) and DMFS than those with non-O blood type (aHR=1.495, 95% CI 1.032-2.165, P=0.034 for OS; aHR=1.566, 95% CI 1.054-2.328, P=0.026 for DSS; aHR=1.779, 95% CI 1.056-2.998, P=0.030 for DMFS). In male patients, there was no significant difference observed between O blood type patients and non-O blood type patients in any survival endpoints.

Conclusion: O blood type was associated with an unfavorable DMFS in female patients with nasopharyngeal carcinoma in epidemic area, which might contribute to unfavorable OS and DSS in female patients, even contribute to a lower DMFS in the whole patients. It might be beneficial to predict metastasis so as to guide the treatment in female patients with nasopharyngeal carcinoma in epidemic area.

Key words: Nasopharyngeal carcinoma; Blood type; Female patients; Distant-metastasis-free survival.

Introduction

Nasopharyngeal carcinoma (NPC), arises from the nasopharyngeal epithelium [1]. In 2012, there

were 86,500 cases reported worldwide, in which 71% of all new cases in east and Southeast Asia, with

China contributing 53.5% of these cases [2, 3]. Several factors have been proved to enhance the risk of NPC, smoking, alcohol consumption, and family history of cancer and so on [4-6].

The ABO gene, located on chromosome 9q34.1 to 9q34.2, encodes a specific glycosyl transferase that synthesizes A and B agglutinogens to form the ABO blood type agglutinogens [7], expressed by erythrocytes, most epithelial cells, endothelial cells and so on [8]. Relationship between the ABO blood type and prognosis have been reported in many tumor types, such as leukemia [9], pancreatic cancer [10-12], bladder cancer [13], gastric cancer [14-16], renal cell carcinoma [17], breast cancer [18,19], lung cancer [20,21] and so on.

The correlation between ABO blood type and NPC remains controversial. Some researches demonstrated the absence of an association between ABO blood type and NPC [22-24]. Other studies indicated that the ABO blood type was related to NPC susceptibility, for instance A blood type increased risks, mainly in male patients [25-27].

Therefore, we sought to conduct a study to assess the prognostic value of different blood types in NPC patients, to determine whether certain blood type is an independent predictor of prognosis so as to guide the clinical practice.

Material and methods

Population

We reviewed all the 2,626 patients who were newly diagnosed with NPC without distant metastasis between January 2001 and December 2004 at the Sun Yat-sen University Cancer Center (SYSUCC). We collected data on basic characteristics including age, gender, tumor family history, cigarette smoking status at diagnosis, alcohol drinking status at diagnosis, BMI status at diagnosis, whether to receive chemotherapy, chemotherapy cycles and ABO blood type. 187 patients with missing data were excluded from this study. All cases were restaged according to the 7th edition of the UICC/AJCC staging system [28]. Computed tomography and/or magnetic resonance imaging was essential for disease staging before treatment, and all patients were treated by CRT (n=2287), or IMRT (n=152) with or without chemotherapy. For 2D-CRT, high energy 6-8 MV X-ray of linear accelerator was used. The radiation field included the skull base, nasopharynx and neck. Face-neck joint field and lower cervical anterior tangent field were irradiated to a dose of 36 Gy, and then followed by bilateral preauricular fields plus anterior tangent field to a total dose of 60 to 78 Gy. For IMRT, simultaneous integrated boost (SIB) technique was used. All patients were scanned with serial 3-mm

slices from the vertex through the clavicles in supine position with a head, neck, and shoulder thermoplastic mask. GTV was defined as the primary nasopharyngeal gross tumor volume and the involved cervical lymph nodes and was prescribed 66-70Gy in 30-32 fractions. CTV1 was defined as the GTVnx plus a margin of 5-10 mm for potential spread and was prescribed 60Gy in 30-32 fractions. CTV2 was defined by adding a margin of 5-10 mm to CTV1 (reduced when adjacent critical organ at risk (OAR)) and included the retropharyngeal lymph nodal regions, clivus, skull base, pterygoid fossae, parapharyngeal space, inferior sphenoid sinus, and posterior edge of the nasal cavity and maxillary sinuses, and was prescribed 54Gy in 30-32 fractions. For N0 patients, lower neck was not irradiated. While for N positive patients, the whole neck was delineated in CTV2. Chemotherapy included induction chemotherapy (IC), concomitant chemotherapy (CC), and adjuvant chemotherapy (AC). Chemotherapy regimen was mainly based on platinum.

Study design

The flowchart of study design was shown in Figure 1. We first analyzed the endpoints including overall survival (OS), disease-specific survival (DSS), locoregional relapse-free survival (LRFS) and distant metastasis-free survival (DMFS) among all the 4 ABO blood types pairwise over strata in the whole 2439 patients to select certain blood type with prognostic value. Then, we further compared certain blood type patients with others in the whole 2439 patients, 559 female patients and 1880 male patients respectively.

Endpoints

OS was defined as time from diagnosis to death from any cause. DSS was defined in this analysis as the patients of a dataset who did not die from NPC in a defined period of time. LRFS was defined as time to the first occurrence of tumor growth at the primary site or regional lymph nodes. DMFS time was defined as time to the first occurrence of distant failure during follow-up.

Statistical analysis

Analyses were performed using SPSS software, version 24.0. The Chi-square test was used to compare categorical variables. Survival rates were estimated by means of life table method. Cox proportional hazards model was used to test the independent significance of different variables by backward elimination. Receiver operating characteristic (ROC) curve analysis was used to evaluate the predicted validity of age, based on the method of Hanley and McNeil [29]. Kaplan-Meier survival curve figures were performed by GraphPad Prism software, version 6.04.

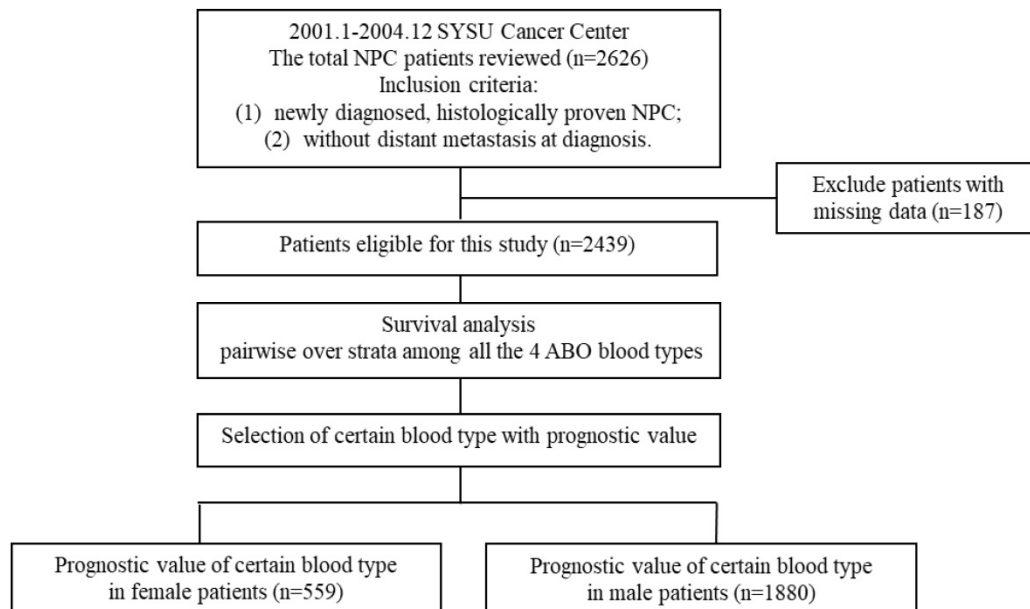


Figure 1. Flowchart of study design. NPC = nasopharyngeal carcinoma.

Results

Baseline characteristics

The clinical characteristics of the 2439 patients are shown in Table 1. The proportions of O, A, B, and AB blood types were: 40.1% (977/2439), 26.3% (641/2439), 27.5% (670/2439) and 6.2% (151/2439) respectively. There were no significant difference observed between O blood group patients and non-O blood group patients. According to the ROC curve analysis based on OS, the optimal age cut-off value was 53 years (area under curve: 0.592; sensitivity, 0.547; specificity, 0.471) for the 2439 patients. The 5-year survival rates for the 2439 patients were 76.3%, 79.2%, 85.7%, and 87.7% for OS, DSS, LRFS, and DMFS, respectively.

Selection of certain blood type with prognostic value in the whole patients

We analyzed all endpoints among all the 4 ABO blood types pairwise over strata in the whole patients. There was almost no significant difference between any pair blood group, except for DMFS between B blood type patients and O blood type patients (Table 2). Compared with B blood type patients, O blood type patients had lower DMFS (hazard ratio (HR)=1.410, 95% CI 1.052-1.889, P=0.021 in univariate analysis; adjusted hazard ratio (aHR)=1.411, 95% CI 1.053-1.891, P=0.021 in multivariate analysis). Therefore, we confined A, B and AB blood type patients undifferentiated and collected them together into non-O blood type patients, so as to further

compare with O blood type patients. Similarly, there was almost no significant difference between O and non-O blood type patients, except that O blood type patients had significant lower DMFS than non-O blood type patients (HR=1.262, 95% CI 1.006-1.584, P=0.045 in univariate analysis; aHR=1.268, 95% CI 1.010-1.592, P=0.041 in multivariate analysis; Table 3, Figure 2A).

Prognostic value of O blood type in female patients

In female patients, compared with non-O blood type patients, O blood type patients had significant lower OS, DSS and DMFS in univariate analysis (HR=1.471, 95% CI 1.016-2.131, P=0.041 for OS; HR=1.534, 95% CI 1.032-2.279, P=0.034 for DSS; HR=1.748, 95% CI 1.038-2.943, P=0.036 for DMFS), and in multivariate analysis (aHR=1.495, 95% CI 1.032-2.165, P=0.034 for OS; aHR=1.566, 95% CI 1.054-2.328, P=0.026 for DSS; aHR=1.779, 95% CI 1.056-2.998, P=0.030 for DMFS; Table 3, Figure 2B, Figure 3A, 3B). There was no significant difference in LRFS observed (HR=1.295, 95% CI 0.780-2.150, P=0.318; aHR=1.237, 95% CI 0.738-2.074, P=0.419; Table 3, Figure 3C).

Prognostic value of O blood type in male patients

In male patients, there were no significant differences observed between O blood type patients and non-O blood type patients in OS, DSS, LRFS and DMFS (P>0.05 for all rates; Table 3, Figure 2C).

Table 1. Characteristics of patients.

Characters	Total Patients (N=2439)			Female Patients (N=559)			Male Patients (N=1880)		
	O (N=977) n (%)	Non-O (N=1462) n (%)	P	O (N=233) n (%)	Non-O (N=326) n (%)	P	O (N=744) n (%)	Non-O (N=1136) n (%)	P
Gender									
Female	233 (23.8)	326 (22.3)	0.377	233 (100.0)	326 (100.0)	--	0 (0)	0 (0)	--
Male	744 (76.2)	1136 (77.7)		0 (0)	0 (0)		744 (100.0)	1136 (100.0)	
Age (year)									
<53	701 (71.8)	1012 (69.2)	0.190	176 (75.5)	151 (46.3)	0.267	525 (70.6)	768 (67.6)	0.176
≥53	276 (28.2)	450 (30.8)		57 (24.5)	175 (53.7)		219 (29.4)	368 (32.4)	
Family history									
Yes	240 (24.6)	378 (25.9)	0.477	70 (30.0)	90 (27.6)	0.569	170 (22.8)	288 (25.4)	0.227
No	737 (75.4)	1084 (74.1)		163 (70.0)	236 (72.4)		574 (77.2)	848 (74.6)	
Smoking									
Yes	469 (48.0)	745 (51.0)	0.180	10 (4.3)	6 (1.8)	0.121	459 (61.7)	739 (65.1)	0.141
No	508 (52.0)	717 (49.0)		223 (95.7)	320 (98.2)		285 (38.3)	397 (34.9)	
Drinking									
Yes	206 (21.1)	327 (22.4)	0.484	6 (2.6)	5 (1.5)	0.539	200 (26.9)	322 (28.3)	0.494
No	771 (78.9)	1135 (77.6)		227 (97.0)	321 (98.5)		544 (73.1)	814 (71.7)	
BMI									
Underweight(<18.5)	89 (9.1)	137 (9.4)	0.761	31 (13.3)	35 (10.7)	0.575	58 (7.8)	102 (9.0)	
Normal weight	472 (48.3)	684 (46.8)		117 (50.2)	162 (49.7)		355 (47.7)	522 (46.0)	0.585
Overweight (>23)	416 (42.6)	641 (43.8)		85 (36.5)	129 (39.6)		331 (44.5)	512 (45.1)	
Tumor Stage									
T1	182 (18.6)	228 (15.6)	0.256	52 (22.3)	58 (17.8)	0.416	130 (17.5)	170 (15.0)	0.526
T2	390 (39.9)	617 (42.2)		85 (36.5)	133 (40.8)		305 (41.0)	484 (42.6)	
T3	240 (24.6)	369 (25.2)		52 (22.3)	81 (24.8)		188 (25.3)	288 (25.4)	
T4	165 (16.9)	248 (17.0)		44 (18.9)	54 (16.6)		121 (16.3)	194 (17.1)	
Node Stage									
N0	249 (25.5)	369 (25.2)	0.805	60 (25.8)	69 (21.2)	0.462	189 (25.4)	300 (26.4)	0.549
N1	413 (42.3)	597 (40.8)		100 (42.9)	146 (44.8)		313 (42.1)	451 (39.7)	
N2	277 (28.4)	441 (30.2)		66 (28.3)	95 (29.1)		211 (28.4)	346 (30.5)	
N3	38 (3.9)	55 (3.8)		7 (3.0)	16 (4.9)		31 (4.2)	39 (3.4)	
UICC Stage									
I	57 (5.8)	68 (4.7)	0.444	13 (5.6)	12 (3.7)	0.731	44 (5.9)	56 (4.9)	0.540
II	349 (35.7)	504 (34.5)		85 (36.5)	124 (38.0)		264 (35.5)	380 (33.5)	
III	374 (38.3)	594 (40.6)		85 (36.5)	123 (37.7)		289 (38.8)	471 (41.5)	
IV	197 (20.2)	296 (20.2)		50 (21.5)	67 (20.6)		147 (19.8)	229 (20.2)	
Chemotherapy									
None	446 (45.6)	683 (46.7)	0.230	112 (48.1)	148 (45.4)	0.421	334 (44.9)	535 (47.1)	0.256
IC	232 (23.7)	311 (21.3)		58 (24.9)	75 (23.0)		174 (23.4)	236 (20.8)	
CC	207 (21.2)	295 (20.2)		41 (17.6)	65 (19.9)		166 (22.3)	230 (20.2)	
IC + CC	77 (7.9)	150 (10.3)		18 (7.7)	36 (11.0)		59 (7.4)	114 (10.0)	
CC + AC	16 (1.5)	23 (1.6)		4 (1.7)	2 (0.6)		11 (1.5)	21 (1.8)	
Chemotherapy cycles									
0	446 (45.6)	683 (46.7)	0.701	112 (48.1)	148 (45.4)	0.856	334 (44.9)	535 (47.1)	0.619
1	156 (16.0)	237 (16.2)		32 (13.7)	50 (15.3)		124 (16.7)	187 (16.5)	
2	284 (29.1)	402 (27.5)		73 (31.3)	99 (30.4)		211 (28.4)	303 (26.7)	
3	71 (7.3)	109 (7.5)		15 (6.4)	25 (7.7)		56 (7.5)	84 (7.4)	
4	10 (1.0)	22 (1.5)		1 (0.4)	3 (0.9)		9 (1.2)	19 (1.7)	
5	10 (1.0)	9 (0.6)		0 (0.0)	1 (0.3)		10 (1.3)	8 (0.7)	
Radiotherapy technique									
CRT	914 (93.6)	1373 (93.9)	0.718	233 (95.7)	316 (96.9)	0.442	691 (92.9)	1057 (93.0)	0.888
IMRT	63 (93.4)	89 (6.1)		10 (4.3)	10 (3.1)		53 (7.1)	79 (7.0)	

Notes: The cut-off value of age was 53 year-old (11-78 year-old, mean 46.3 year-old, median 46 year-old, standard deviation 11.6 year-old). P<0.05 was considered statistical significance.

Abbreviations: BMI= Body mass index; UICC= International Union Against Cancer; IC= Induction chemotherapy; CC= Concomitant chemotherapy; AC= Adjuvant chemotherapy; CRT= Conventional radiotherapy; IMRT= Intensity-modulated radiotherapy.

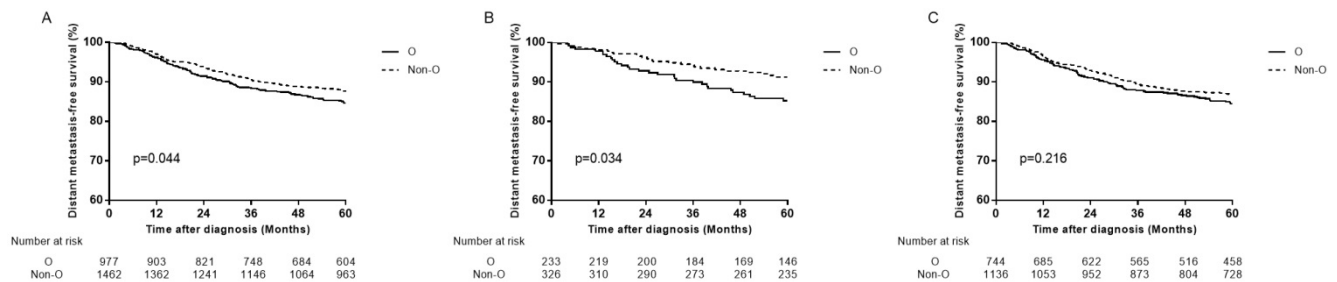


Figure 2. Distant metastasis-free survival curves for patients with blood type O and non-O blood types. (A) In total patients, (B) in female patients and (C) in male patients.

Table 2. Pairwise comparisons of all endpoints among ABO blood types in total patients.

	Blood type	A		AB		B		O	
		Chi-Square	P	Chi-Square	P	Chi-Square	P	Chi-Square	P
OS									
Log Rank (Mantel-Cox)	A			0.131	0.718	0.101	0.751	1.091	0.296
	AB	0.131	0.718			0.320	0.572	0.919	0.338
	B	0.101	0.751	0.320	0.572			0.489	0.484
	O	1.091	0.296	0.919	0.338	0.489	0.484		
DSS									
Log Rank (Mantel-Cox)	A			0.853	0.356	0.000	0.991	1.387	0.239
	AB	0.853	0.356			0.899	0.343	2.499	0.114
	B	0.000	0.991	0.899	0.343			1.355	0.244
	O	1.387	0.239	2.499	0.114	1.355	0.244		
LRFS									
Log Rank (Mantel-Cox)	A			2.442	0.118	0.057	0.811	0.115	0.735
	AB	2.442	0.118			2.896	0.089	3.124	0.077
	B	0.057	0.811	2.896	0.089			0.007	0.935
	O	0.115	0.735	3.124	0.077	0.007	0.935		
DMFS									
Log Rank (Mantel-Cox)	A			0.118	0.731	1.654	0.198	0.882	0.348
	AB	0.118	0.731			0.197	0.657	0.759	0.384
	B	1.654	0.198	0.197	0.657			5.355	0.021
	O	0.882	0.348	0.759	0.384	5.355	0.021		

Notes: P<0.05 was considered statistical significance.

Abbreviations: OS= Overall survival; DSS= Disease-specific survival; LRFS= Locoregional relapse-free survival; DMFS= Distant metastasis-free survival.

Table 3. Univariate and multivariate analyses between patients with O and non-O blood type.

Survival	Total Patients (N=2439)			Female Patients (N=559)			Male Patients (N=1880)		
	Non-O (n=1462)	O (n=977)	P	Non-O (n=326)	O (n=233)	P	Non-O (n=1136)	O (n=744)	P
OS									
Events n (%)	335 (22.9)	243 (24.9)		56 (17.2)	56 (24.0)		279 (24.6)	187 (25.1)	
HR (95% CI)	1.000	1.104 (0.936-1.302)	0.241	1.000	1.471 (1.016-2.131)	0.041	1.000	1.031 (0.857-1.241)	0.746
aHR (95% CI)	1.000	1.138 (0.964-1.342)	0.126	1.000	1.495 (1.032-2.165)	0.034	1.000	1.065 (0.884-1.282)	0.510
DSS									
Events n (%)	291 (19.9)	216 (22.1)		48 (14.7)	47 (20.2)		242 (21.3)	171 (23.0)	
HR (95% CI)	1.000	1.159 (0.973-1.159)	0.098	1.000	1.534 (1.032-2.279)	0.034	1.000	1.086 (0.893-1.321)	0.408
aHR (95% CI)	1.000	1.188 (0.997-1.416)	0.055	1.000	1.566 (1.054-2.328)	0.026	1.000	1.114 (0.916-1.356)	0.280
LRFS									
Events n (%)	205 (14.0)	143 (14.6)		32 (9.8)	27 (11.6)		173 (15.2)	116 (15.6)	
HR (95% CI)	1.000	1.069 (0.864-1.323)	0.539	1.000	1.295 (0.780-2.150)	0.318	1.000	1.031 (0.815-1.304)	0.801
aHR (95% CI)	1.000	1.102 (0.891-1.365)	0.371	1.000	1.237 (0.738-2.074)	0.419	1.000	1.069 (0.845-1.354)	0.577
DMFS									
Events n (%)	164 (11.2)	136 (13.9)		26 (8.0)	31 (13.3)		138 (12.1%)	105 (14.1)	
HR (95% CI)	1.000	1.262 (1.006-1.584)	0.045	1.000	1.748 (1.038-2.943)	0.036	1.000	1.174 (0.911-1.513)	0.216
aHR (95% CI)	1.000	1.268 (1.010-1.592)	0.041	1.000	1.779 (1.056-2.998)	0.030	1.000	1.172 (0.909-1.512)	0.220

Notes: P<0.05 was considered statistical significance.

Abbreviations: HR= Hazard ratio; aHR= Adjusted hazard ratio; CI= Confidence interval; OS= Overall survival; DSS= Disease-specific survival; LRFS= Locoregional relapse-free survival; DMFS= Distant metastasis-free survival.

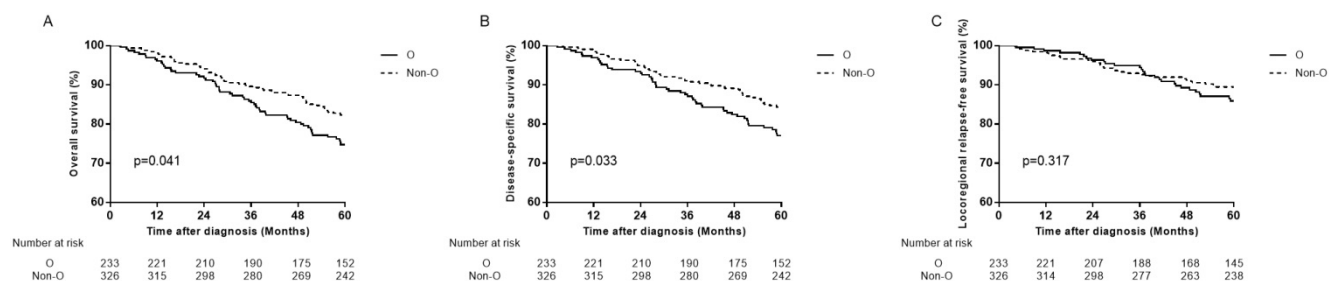


Figure 3. Survival curves for patients with blood type O and non-O blood types in the 559 female patients. (A) Overall survival, (B) disease-specific survival and (C) locoregional relapse-free survival.

Discussion

Our study showed in the whole patients, compared with non-O blood type (A, B, and AB) patients, type O patients had significantly lower 5-year DMFS (Table 3, Figure 2A). Furthermore, in female patients, O blood type patients didn't only have significantly lower DMFS but also lower OS, DSS than patients with non-O blood type, except LRFS (Table 3, Figure 2B, Figure 3). However, none of them was observed in male patients (Table 3, Figure 2C). Therefore, we deduced that female NPC patients with O blood type might have lower DMFS, which might result in lower OS and DSS compared with those with non-O blood type, even dragged down DMFS in the whole NPC population.

Previous studies have evaluated the association of ABO blood types with NPC [22-27]. The two studies by Sheng et al [25] and Ouyang et al [26] revealed that patients with A blood type had significantly lower OS and DMFS compared to patients with non-A blood type. Therefore, the failure patterns were mainly compared between A and other blood type patients to clarify the differences. However, when we set A blood type as the control group, the results showed no association of ABO blood types with NPC (Figure 4, Figure 5).

In subgroup analysis by Ouyang et al [26], the increased risks of OS and DMFS associated with A blood type were only observed in male patients, which was attributed to unbalanced gender distribution between the patients with blood type A and non-A blood types. However, the results of our subgroup analysis showed A blood type patients had similar prognosis with others, whether in male patients or not (Figure 6; Figure 7). It should be pointed out that patients in our study made up a consecutive cohort, which included several pathological types, radiotherapy techniques and other features, so as to decrease some bias compared with selected cohort studied in other studies. So these results may help to further confirm that A blood type may have no prognostic value in NPC. Peng et al [24] showed that ABO blood type was not an independent prognostic factor for DFS, OS, DMFS or LRFS after adjusting for plasma Epstein-Barr virus deoxyribonucleic acid (EBV-DNA). There might be some prognostic value in ABO blood type but offset by adjusting for plasma EBV-DNA. Moreover, it used the four-year survival endpoints to analyze, might get the misleading conclusion resulting from insufficient follow-up time.

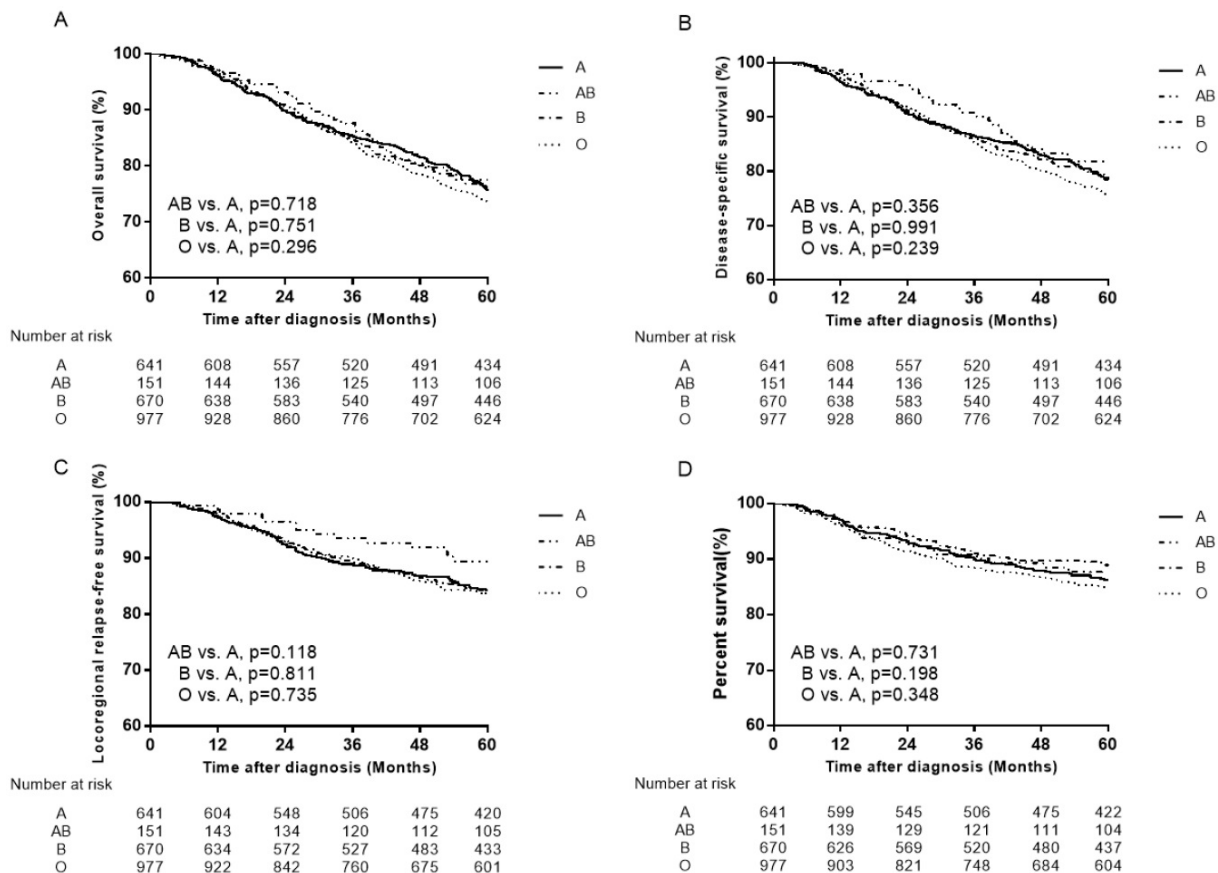


Figure 4. Survival curves for patients with blood type A, B, AB and O in the total 2439 patients. (A) Overall survival, (B) disease-specific survival (C) locoregional relapse-free survival and (D) distant metastasis-free survival.

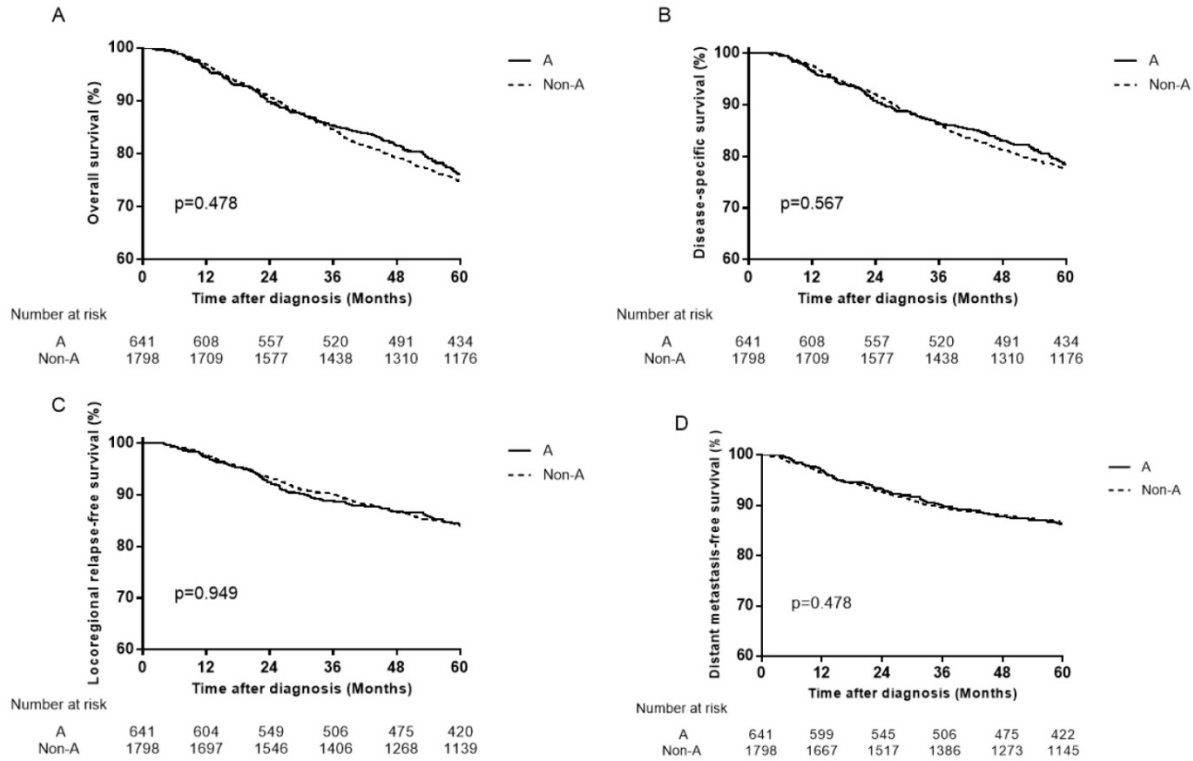


Figure 5. Survival curves for patients with blood type A and non-A in the total 2439 patients. (A) Overall survival, (B) disease-specific survival, (C) locoregional relapse-free survival and (D) distant metastasis-free survival.

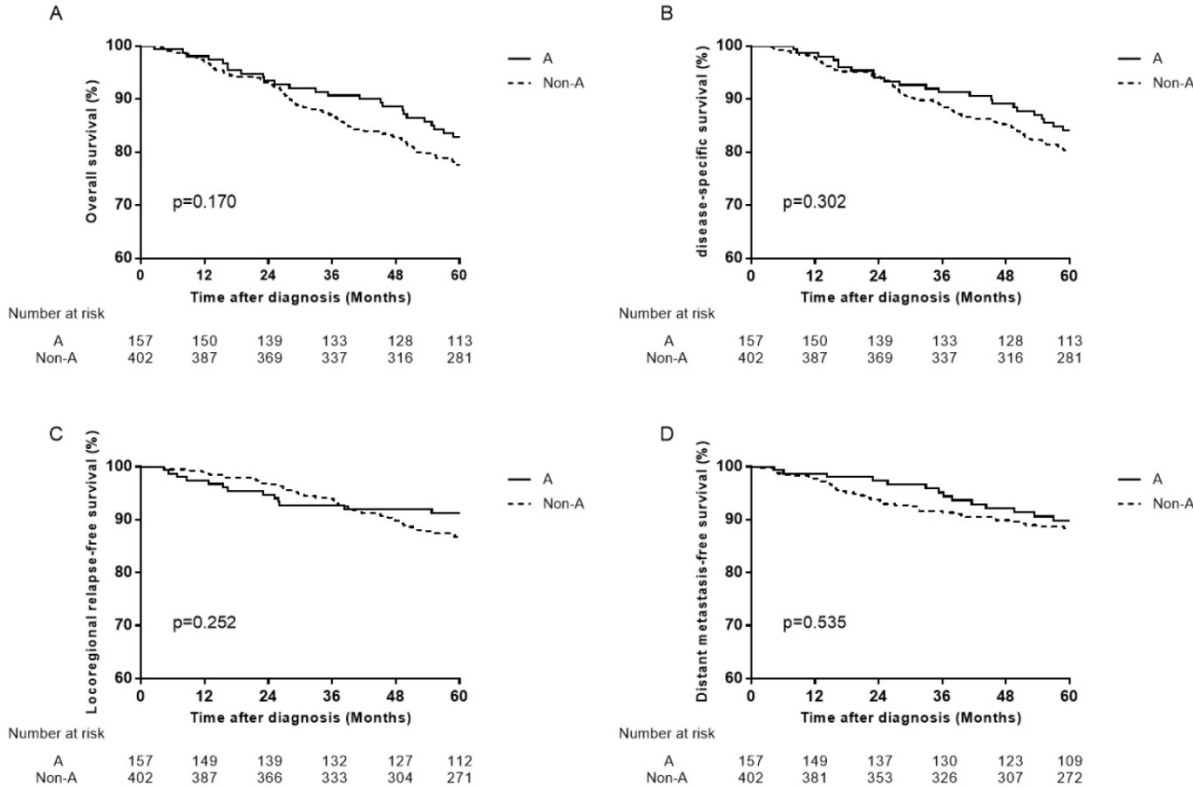


Figure 6. Survival curves for patients with blood type A and non-A blood types in the 559 female patients. (A) Overall survival, (B) disease-specific survival, (C) locoregional relapse-free survival and (D) distant metastasis-free survival.

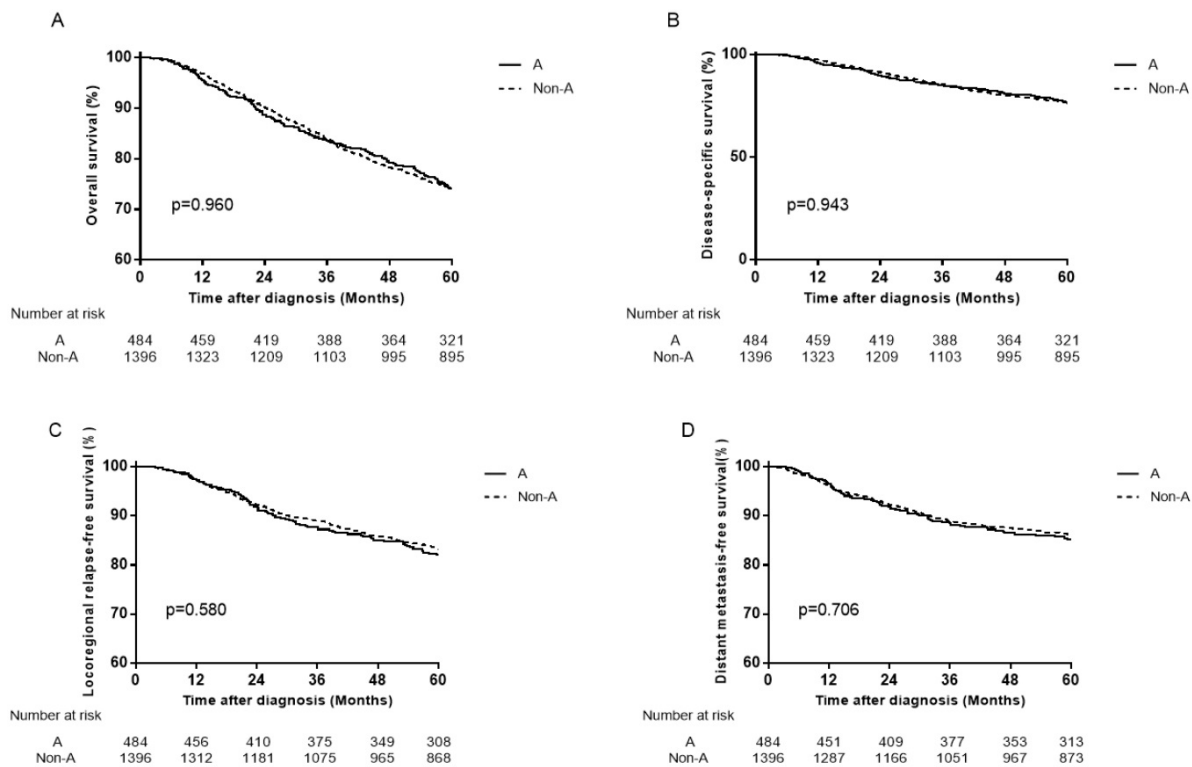


Figure 7. Survival curves for patients with blood type A and non-A blood types in the 1880 male patients. (A) Overall survival, (B) disease-specific survival, (C) locoregional relapse-free survival, and (D) distant metastasis-free survival.

Aside from NPC, ABO blood types have been reported associated with prognosis in various kinds of tumors [10-21]. For instance, A blood type is associated with risk of gastric cancer [14,15], attributed to A blood type alleles affected the fucosyltransferase enzymes which are involved in Lewis antigen formation known to be important factors in *H. pylori* adhesion and infection identified by phenotype analysis [16]. Likewise, A blood type is associated with unfavorable survivals in some other tumors, such as breast cancer [18,19], lung cancer [20,21] and so on. O blood type is associated with a reduced risk of pancreatic cancer [10-12], which may be attributed to ABO blood group IgM isoagglutinins interact with tumor-associated O-glycan structures in pancreatic cancer [12]. Similarly, non-O blood type is significantly associated with decreased OS in renal cell carcinoma patients [17]. Conversely, O blood type is associated with the worst recurrence and progression rates in nonmuscle invasive bladder cancer [13].

The mechanism of how ABO blood type might influence NPC progression remains relatively elusive. Underlying molecular and pathogenic differences play important roles in the effect of ABO blood types on survival. Firstly, ABO gene is located on chromosome 9q34, which is a common region of loss in NPC [30]. Secondly, a study in women showed an association between ABO blood group status and the

serum levels of soluble intercellular adhesion molecule-1 (sICAM-1) [31]. The sICAM-1 concentration was higher in women with O blood type, particularly higher than those with A blood type. In addition, the higher serum sICAM-1 concentration was related to the worse survival in NPC [32]. Neoplastic transformation and evolution to metastatic disease are characterized by a dramatic aberration in cellular cohesive interaction. The adhesion molecules were shown to facilitate tumor cell mobility, adhesion of tumor cells to endothelium, neovascularization at the metastatic sites, and host inflammatory response to cancer [33,34]. Intercellular adhesion molecule 1 (ICAM-1) is an inducible cell-surface adhesion molecule, and the ICAM-1/lymphocyte function associated antigen-1 (LFA-1) pathway plays a major role in a variety of cell-mediated immune responses. It has been reported that ICAM-1 on the surface of cancer cells or antigen-presenting cells (i.e. macrophages) is a costimulatory factor that stabilizes T-cell receptor-mediated binding between these cells and T lymphocytes [35]. Soluble ICAM-1 would work as an immunosuppressive agent by blocking LFA-1 on T lymphocytes, thus rendering it less available for binding with cell-surface ICAM-1 on cancer cells [36]. In this manner, the shedding of sICAM-1 may enhance the metastatic process by escaping host immune surveillance. This process therefore

represents an additional potential mechanism for high levels of sICAM-1 in patients with NPC that has metastasized via hematogenous and lymphatic routes. So the higher concentration of sICAM-1 in O blood type patients, may partially explain the poorer survival of O blood type NPC patients. Thirdly, the expression change of serum tumour necrosis factor- α (sTNF- α) level is closely related to tumour progression and prognosis in many cancers including NPC [36-38]. Individuals of blood group O had higher sTNF- α levels than others [39]. While, high expression levels of sTNF- α could predict bone invasion, post-treatment distant metastasis and poor overall survival in NPC patients [40]. Further basic researches about NPC genetic, biological differences associated with the ABO blood types are required. Therefore, our next research direction will be for these underlying mechanisms for further exploration and validation.

The limitations of our study are related to its retrospective nature. We were unable to collect adequate information regarding the patients' pretreatment plasma EBV-DNA copy number, which has been demonstrated to strongly predict survival [28]. We excluded patients with missing data, such as with unknown ABO blood type. Finally, 233/2439 (11.9%) patients for the entire population, 124/977 (12.7%) and 166/1462 (11.4%) patients with O and non-O blood type were lost to follow up, respectively.

Conclusion

O blood type was associated with an unfavorable DMFS in female patients with nasopharyngeal carcinoma in epidemic area, which might contribute to unfavorable OS and DSS in female patients, even contribute to a lower DMFS in the whole patients. It might be beneficial to predict metastasis so as to guide the treatment in female patients with nasopharyngeal carcinoma in epidemic area.

Acknowledgments

This work was supported by the Hi-Tech Research and Development Program of China (Grant number 2006AA02Z4B4), the National Natural Science Foundation of China (No. 31170805) and the National Key R & D Program of Precise Medical Research of China (NO. 2016YFC0904600). The funders had no role in study design, data collection and analysis, decision to publish, or preparation of the manuscript.

Competing Interests

The authors have declared that no competing interest exists.

References

- Chua M, Wee J, Hui EP, et al. Nasopharyngeal carcinoma. *Lancet*. 2016; 387(10022): 1012-1024.
- Torre LA, Bray F, Siegel RL, et al. Global Cancer Statistics, 2012. *Ca-Cancer J Clin*. 2015; 65(2): 87-108.
- Shield KD, Ferlay J, Jemal A, et al. The global incidence of lip, oral cavity, and pharyngeal cancers by subsite in 2012. *CA Cancer J Clin*. 2017; 67(1): 51-64.
- Chen C, Shen LJ, Li BF, et al. Smoking is a poor prognostic factor for male nasopharyngeal carcinoma treated with radiotherapy. *Radiother Oncol*. 2014; 110(3): 409-415.
- Chen YP, Zhao BC, Chen C, et al. Alcohol drinking as an unfavorable prognostic factor for male patients with nasopharyngeal carcinoma. *Sci Rep*. 2016; 6: 19290.
- Nor HN, Ramzi NH, Velapasamy S, et al. Identification of genetic and non-genetic risk factors for nasopharyngeal carcinoma in a Southeast Asian population. *Asian Pac J Cancer Prev*. 2012; 13(12): 6005-6010.
- Yamamoto F, Clausen H, White T, et al. Molecular genetic basis of the histo-blood group ABO system. *Nature*. 1990; 345(6272): 229-233.
- Schuessler MH, Pintado S, Welt S, et al. Blood-group and blood-group-related antigens in normal pancreas and pancreas cancer - enhanced expression of precursor type-1, tn and sialyl-tn in pancreas cancer. *Int J Cancer*. 1991; 47(2): 180-187.
- Nambiar RK, Narayanan G, Prakash NP, et al. Blood group change in acute myeloid leukemia. *Proc (Bayl Univ Med Cent)*. 2017; 30(1): 74-75.
- Rahbari NN, Bork U, Hinz U, et al. ABO blood group and prognosis in patients with pancreatic cancer. *Bmc Cancer*. 2012; 12: 319.
- Engin, H, Bilir C, Ustun H, et al. ABO Blood Group and Risk of Pancreatic Cancer in a Turkish Population in Western Blacksea Region. *Asian Pac J Cancer Prev*. 2012; 13(1): 131-133.
- Hofmann BT, Stehr A, Dohrmann T, et al. ABO blood group IgM isoagglutinins interact with tumor-associated O-glycan structures in pancreatic cancer. *Clin Cancer Res*. 2014; 20(23): 6117-6126.
- Ohno Y. Words of wisdom. Re: Impact of ABO blood type on outcomes in patients with primary nonmuscle invasive bladder cancer. *Eur Urol*. 2014; 66(2): 391.
- Xu YQ, Jiang TW, Cui YH, et al. Prognostic value of ABO blood group in patients with gastric cancer. *J Surg Res*. 2016; 201(1): 188-95.
- Edgren G, Hjalgrim H, Rostgaard K, et al. Risk of gastric cancer and peptic ulcers in relation to ABO blood type: A cohort study. *Am J Epidemiol*. 2010; 172(11): 1280-1285.
- Duell EJ, Bonet C, Munoz X, et al. Variation at ABO histo-blood group and FUT loci and diffuse and intestinal gastric cancer risk in a European population. *Int J Cancer*. 2015; 136(4): 880-893.
- Kaffenberger SD, Morgan TM, Stratton KL, et al. ABO blood group is a predictor of survival in patients undergoing surgery for renal cell carcinoma. *Bju Int*. 2012; 110(11B): E641-E646.
- Stamatakis M, Kontzoglou K, Safioleas P, et al. Breast cancer incidence in Greek women in relation to ABO blood groups and Rh factor. *International seminars in surgical oncology* 2009; 6: 14.
- Park S, Kim KS, Kim JS, et al. Prognostic value of ABO blood types in young patients with breast cancer; A nationwide study in Korean Breast Cancer Society. *Med Oncol*. 2017; 34(6): 118.
- Leon-Atance P, Moreno-Mata N, Gonzalez-Aragoneses F, et al. Prognostic influence of loss of blood group a antigen expression in pathologic stage I non-small-cell lung cancer. *Arch Bronconeumol*. 2012; 48(2): 49-54.
- Fukumoto K, Taniguchi T, Usami N, et al. The ABO blood group is an independent prognostic factor in patients with resected non-small cell lung cancer. *J Epidemiol*. 2015; 25(2): 110-116.
- Seow LJ, Kwa SB, Teoh CK. A preliminary survey of abo blood group frequency in nasopharyngeal carcinoma in Chinese patients. *Singapore Med J*. 1964; 4: 93-95.
- Zhang Y, Kang S, Chen G, et al. ABO Blood Group, Epstein-Barr virus Infection and Prognosis of Patients with Non-metastatic Nasopharyngeal Carcinoma. *Asian Pac J Cancer Prev*. 2014; 15(17): 7459-7465.
- Peng H, Chen L, Li W, et al. Prognostic correlations between abo blood group and pre-treatment plasma Epstein-Barr virus DNA in patients with nasopharyngeal carcinoma receiving intensity-modulated radiotherapy. *Plos One*. 2016; 11(11): e166194.
- Sheng L, Sun X, Zhang L, et al. ABO blood group and nasopharyngeal carcinoma risk in a population of Southeast China. *Int J Cancer*. 2013; 133(4): 893-897.
- Ouyang PY, Su Z, Mao YP, et al. Prognostic value of ABO blood group in southern Chinese patients with established nasopharyngeal carcinoma. *Br J Cancer*. 2013; 109(9): 2462-2466.
- Turkoz FP, Celenkoglu G, Dogu GG, et al. Risk factors of nasopharyngeal carcinoma in turkey-an epidemiological survey of the anatolian society of medical oncology. *Asian Pac J Cancer Prev*. 2011; 12(11): 3017-3021.
- Pan J, Xu Y, Qiu S, et al. A comparison between the Chinese 2008 and the 7th edition AJCC staging systems for nasopharyngeal carcinoma. *Am J Clin Oncol*. 2015; 38(2): 189-196.
- Hanley JA, McNeil BJ. The meaning and use of the area under a receiver operating characteristic (ROC) curve. *Radiology*. 1982; 143(1): 29-36.

30. Shao JY, Wang HY, Huang XM, et al. Genome-wide allelotype analysis of sporadic primary nasopharyngeal carcinoma from southern China. *Int J Oncol.* 2000; 17(6): 1267-1275.
31. Pare G, Chasman DI, Kellogg M, et al. Novel association of ABO histo-blood group antigen with soluble ICAM-1: Results of a genome-wide association study of 6,578 women. *PLoS Genet.* 2008; 4(7): e1000118.
32. Yu Y, Dong W, Zhou X, et al. The significance of serum soluble intercellular adhesion molecule 1 and transforming growth factor alpha in patients with nasopharyngeal carcinoma. *Arch Otolaryngol Head Neck Surg.* 2004; 130(10): 1205-1208.
33. Benekli M, Gullu IH, Tekuzman G, et al. Circulating intercellular adhesion molecules-1 and E-selectin levels in gastric cancer. *Br J Cancer.* 1998; 78: 267-271.
34. Velikova G, Banks RE, Gearing A, et al. Serum concentrations of soluble adhesion molecules in patients with colorectal cancer. *Br J Cancer.* 1998; 77: 1857-1863.
35. Lei, K.I. and P.J. Johnson. The prognostic significance of serum levels of soluble intercellular adhesion molecules-1 in patients with primary extranodal non-Hodgkin lymphomas. *Cancer,* 2000; 89(6): 1387-95.
36. Becker JC, Dummer R, Hartmann AA, et al. Shedding of ICAM-1 from human melanoma cell lines induced by IFN-gamma and tumor necrosis factor-alpha. Functional consequences on cell-mediated cytotoxicity. *J Immunol.* 1991; 147(12): 4398-4401.
37. Kaihaara A, Iwagaki H, Gouchi A, et al. Soluble intercellular adhesion molecule-1 and natural killer cell activity in gastric cancer patients. *Res Commun Mol Pathol Pharmacol.* 1998; 100: 283-300.
38. Qu J, Nisolle M, Donnez J. Expression of transforming growth factor alpha, epidermal growth factor, and epidermal growth factor receptor in follicles of human ovarian tissue before and after cryopreservation. *Fertil Steril.* 2000; 74: 113-121.
39. Bei J, Li Y, Jia W, et al. A genome-wide association study of nasopharyngeal carcinoma identifies three new susceptibility loci. *Nat Genet.* 2010; 42(7): 173-599.
40. Lu X, Qian C, Mu Y, et al. Serum CCL2 and serum TNF-alpha - Two new biomarkers predict bone invasion, post-treatment distant metastasis and poor overall survival in nasopharyngeal carcinoma. *Eur J Cancer.* 2011; 47(3): 339-346.