

Risk assessment of readmissions following an initial COPD-related hospitalization

Christine L Baker¹

Kelly H Zou¹

Jun Su²

¹Pfizer Inc, New York, NY, USA; ²Boehringer-Ingelheim Pharmaceuticals Inc, Ridgefield, CT, USA

Background: Acute exacerbation of chronic obstructive pulmonary disease (COPD) is a leading cause of hospitalizations and readmissions in the US. Reducing the frequency of hospital readmission is a high priority of US health care organizations and government agencies. This study evaluated the risk factors associated with readmissions among commercially insured adults aged 40–65 years in the US who were hospitalized for COPD.

Methods: This retrospective cohort study used anonymized claims data from the Truven Health MarketScan[®] Commercial Claims and Encounters database. The patients included were aged 40–65 years, had an index hospitalization with a primary diagnosis of COPD between July 1, 2008 and June 30, 2010 (continuously enrolled 12 months before and after), and were alive at hospital discharge. Patients with cystic fibrosis or tuberculosis or who were transferred to another inpatient facility after hospital discharge were excluded. All readmissions regardless of diagnosis, and separately a subset of all readmissions that had COPD as a primary or secondary diagnosis (COPD-related), were examined. Univariate descriptive statistics and multivariable regression methods were used.

Results: Of the 18,568 patients with index COPD hospitalizations, 6,095 (32.83%) met the eligibility criteria. Of those, 503 (8.25%) were readmitted within the first 30 days post-index hospitalization and 2,527 (41.46%) within the first year (COPD-related 340 [5.58%] and 1,681 [27.58%], respectively). The median time to the first readmission post initial discharge was 4.0 months, with a mean of 5.0 ± 3.4 months. Multivariable regression analyses showed that comorbid conditions and health care utilization in the pre-index period were significant predictors for readmission both 30 and 90 days following index hospitalization.

Conclusion: A relatively high readmission rate was observed for patients aged 40–65 years. The results suggest that attention to patient comorbidities and pre-index/index health care service utilization may help identify hospitalized COPD patients at higher risk for readmission.

Keywords: chronic obstructive pulmonary disease, hospitalization, rehospitalization, readmission, noninterventional study, claims data, real-world data

Introduction

Chronic obstructive pulmonary disease (COPD) is a progressive disease that can negatively impact quality of life and is associated with an increased risk of morbidity and mortality.^{1,2} The decline in lung function of COPD patients tends to be associated with intermittent acute exacerbations (worsening of the condition).^{3,4}

Acute exacerbation of COPD is a leading cause of hospitalizations and readmissions in the US.^{5–7} Reducing the frequency of hospital readmission is a high priority of health care organizations and government agencies, including the US Centers for

Correspondence: Jun Su
Boehringer-Ingelheim Pharmaceuticals
Inc, 900 Ridgebury Road, Ridgefield,
CT 06877, USA
Tel +1 203 798 4788
Fax +1 203 837 4788
Email jun.su@boehringer-ingelheim.com

Medicare and Medicaid Services (CMS).⁸ The goal of the CMS's National Strategy for Quality Improvement in Health Care is to reduce hospital readmission rates by 20% by the end of 2013.⁹ The CMS has identified early readmissions of patients with COPD as a future measure for hospital performance.¹⁰ In addition, the US Patient Protection and Affordable Care Act has sanctioned the development of the Hospital Readmission Reduction Program, which proposes to reduce all-cause hospital readmissions by aligning payment with outcome.¹¹ As such, this program has established a reimbursement penalty for excess readmissions following index hospitalizations for acute myocardial infarction, heart failure, or pneumonia. COPD is another discharge diagnosis that is under consideration for eventual expansion of the program.^{8,11}

This research aimed to identify factors associated with hospital readmission for COPD in order to potentially optimize COPD treatment and follow-up strategies. Studies based on real-world data that focus on risk factors contributing to readmission of COPD patients, particularly working-age patients diagnosed with this condition, are limited. Therefore, this retrospective, observational database study was conducted to describe the patient characteristics and examine risk factors associated with hospital readmission among adults in employer-sponsored health plans within the US who were hospitalized for COPD and were readmitted for any reason.

Materials and methods

Data source

This retrospective study used anonymized real-world claims data from the Truven Health MarketScan[®] Commercial Claims and Encounters database.¹² This database provides access to deidentified medical and prescription drug claims for individuals having an employer-sponsored health insurance plan in the US¹² and has been used previously for COPD research.¹³ This study did not involve the collection, use, or transmittal of individually identifiable data, so was exempt from institutional review board approval.

Inclusion and exclusion criteria

Included in this analysis were patients aged 40–65 years who had an index hospitalization, defined as the first hospitalization with COPD as the primary diagnosis that occurred during the index period. The index period lasted for 2 years, from July 1, 2008 to June 30, 2010. The COPD diagnosis was determined using the International Classification of Diseases, the Ninth Revision, Clinical Modification (ICD-9-CM) codes

491.x (chronic bronchitis), 492.x (emphysema), and 496 (COPD, unspecified).¹⁴ Data were analyzed for 12 months before (pre-index) and 12 months after (post-index) the index hospitalization; therefore, patients must have been continuously enrolled during this time.¹⁵ Only patients who were alive at the time of index hospitalization discharge were included. Patients diagnosed with cystic fibrosis (ICD-9-CM 277.0x) or tuberculosis (ICD-9-CM 010.xx–018.xx) at any time during the study period on a nondiagnostic claim or who were transferred to another inpatient facility after hospital discharge were excluded. After applying the inclusion and exclusion criteria, 6,095 patients were eligible for analysis (Figure 1).

Outcome measures

The main objective of this study was to evaluate patient characteristics and clinical risk factors associated with the first hospital readmission that occurred within one year of the index hospitalization. A hospitalization was counted as a readmission if it occurred on any day following the date

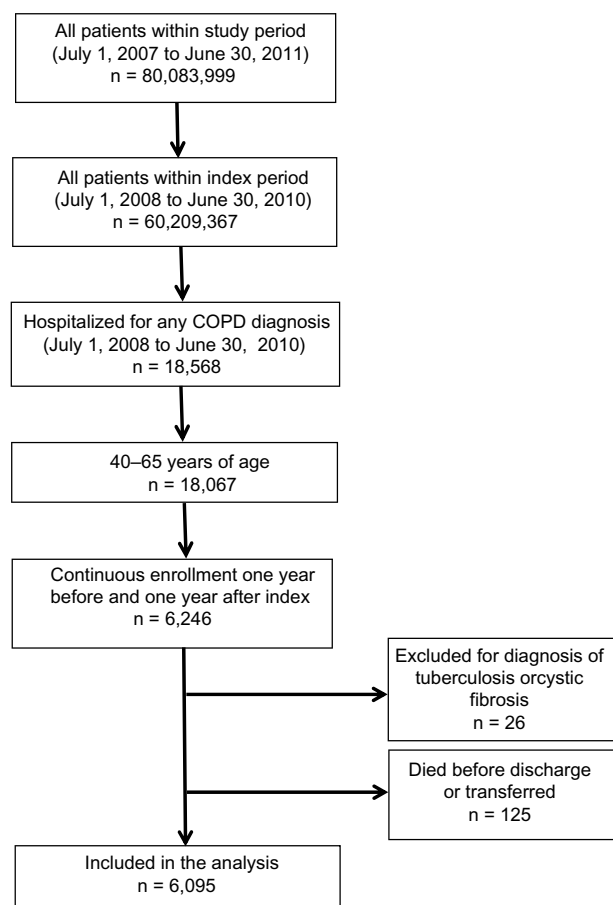


Figure 1 Patient flow diagram.

Abbreviation: COPD, chronic obstructive pulmonary disease.

of index hospitalization discharge; hospitalizations that occurred on the same day as index discharge were not counted as a readmission. Two definitions of readmission were used in the analyses: all readmissions that occurred during the post-index period regardless of diagnosis (all readmissions), and a subset of all readmissions that included only COPD-related readmissions with a primary or secondary diagnosis of COPD during the readmission (COPD readmissions). An additional subset, defined using only a primary diagnosis of COPD on readmission, was examined. The results obtained were similar to the larger COPD subset defined above, so are not reported. Stratified analyses were performed using the amount of time (30 days, 90 days, or one year) between the index hospitalization and first hospital readmission.

Baseline covariates

The baseline covariates for hospital readmission in this analysis included age, gender, US geographic region, urban or rural area, insurance plan type, month and year of index hospitalization, respiratory medications within 90 days before index hospitalization, as well as COPD-related inpatient hospitalizations, COPD-related emergency department visits, and COPD-related outpatient visits during the pre-index period. Additionally, the individual components of the Deyo–Charlson comorbidity index (CCI) were used to measure the pre-index comorbid conditions occurring in the patient population (see Supplementary Table).¹⁶

Statistical analysis

Descriptive statistics for categorical variables included percentages and for continuous variables included the mean, standard deviation, and median. The univariate Chi-square test was used on categorical variables for the two readmission types versus not readmitted. Multivariable stepwise logistic regression analysis was conducted to evaluate factors associated with readmission at 30 and 90 days post-index hospitalization. The baseline covariates used in this analysis are listed above. Odds ratios with 95% confidence intervals and *P*-values for the logistic regression analysis are reported. Statistical significance was reached when two-sided *P*-values were ≤ 0.05 . All univariate and multivariable analyses were performed using SAS[®] version 9.2 software (SAS Institute, Cary, NC, USA).

Results

Of the 6,095 patients included in the analysis (Figure 1), 503 (8.25%) were readmitted during the first 30 days post-index hospitalization (340 of the 503 readmitted patients, or 67.59%, were readmitted for COPD, Figure 2). The percentages of patients with at least one hospital readmission increased over time, reaching 2,527 (41.46%) readmitted patients at one year post-index (1,681 of the 2,527 readmitted patients, or 66.52%, were readmitted for COPD). Nearly half of the readmitted patients were readmitted two or more times within one year post-index hospitalization (46.74% all,

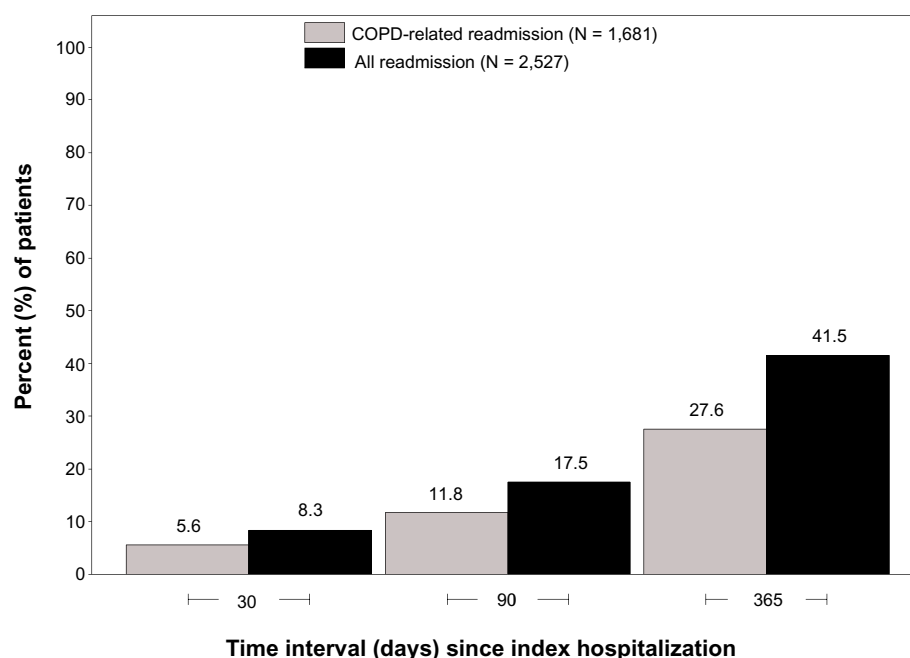


Figure 2 Percentage of study sample readmitted by time to first readmission since the index hospitalization and readmission type (n = 6,095).
Abbreviation: COPD, chronic obstructive pulmonary disease.

45.75% COPD-related). The means of the annual numbers of hospital readmissions were 2.08 ± 1.78 for all patients who had at least one readmission and 2.09 ± 1.82 for patients whose first readmission was COPD-related. The median time to first hospital readmission was 4.0 months, with a mean of 5.0 ± 3.4 months, for all readmitted patients. Similarly, a median of 4.0 months, with a mean of 4.94 ± 3.40 months, was observed for the patients readmitted for COPD. Time to first hospital readmission (months) since the index hospitalization for all readmitted patients is shown in a histogram in Figure 3.

Baseline demographic characteristics were similar between the groups (Table 1). The only significant difference was age as a categorical variable for the COPD-related readmitted patients versus those who were not readmitted ($P = 0.0301$). Readmitted patients were primarily women (59.20%), who had a mean age of 57.75 ± 5.20 years and resided mostly in urban areas (76.61%) and in the South region of the US (44.76%) within the MarketScan database. The most prevalent insurance plan type among the readmitted patients was preferred provider organization (57.18%).

In the pre-index period, aside from chronic pulmonary disease (all, 86.43% and COPD-related, 91.55% versus not readmitted, 79.18%; $P < 0.0001$ for both comparisons), diabetes was the most frequent pre-index comorbidity among readmitted patients, with a significantly larger percentage of readmitted patients (all, 30.71%; COPD-related, 27.66%)

than those who were not readmitted (21.92%) having diabetes ($P < 0.0001$ for both comparisons). Each of the pre-index respiratory medications, except inhaled corticosteroids and mast cell stabilizers, were used by a significantly larger percentage of readmitted patients than those who were not readmitted (Table 2). Short-acting bronchodilators were the most frequently used pre-index respiratory medication, which were used by almost half of the readmitted patients (all, 46.42%; COPD-related, 49.79%), a significant difference from the patients who were not readmitted (39.97%; $P < 0.0001$ for both comparisons). Other pre-index Deyo–CCI comorbidities and respiratory medications that were significantly different between the readmitted patients and those who were not readmitted are shown in Table 2.

In general, readmitted patients had significantly ($P < 0.0001$) more pre-index emergency department and outpatient visits for COPD than those who were not readmitted (Table 3). Approximately twice as many readmitted patients as those who were not readmitted had at least one inpatient hospitalization for COPD in the pre-index period ($P < 0.0001$).

Significant predictors for readmissions within 30 days or 90 days of the index hospitalization were largely related to comorbidities and pre-index hospitalizations (Tables 4 and 5). In general, patients with two or more pre-index hospitalizations for COPD were two to three times more likely to be readmitted for COPD than patients without any pre-index COPD hospitalizations. Comorbid conditions associated with the highest

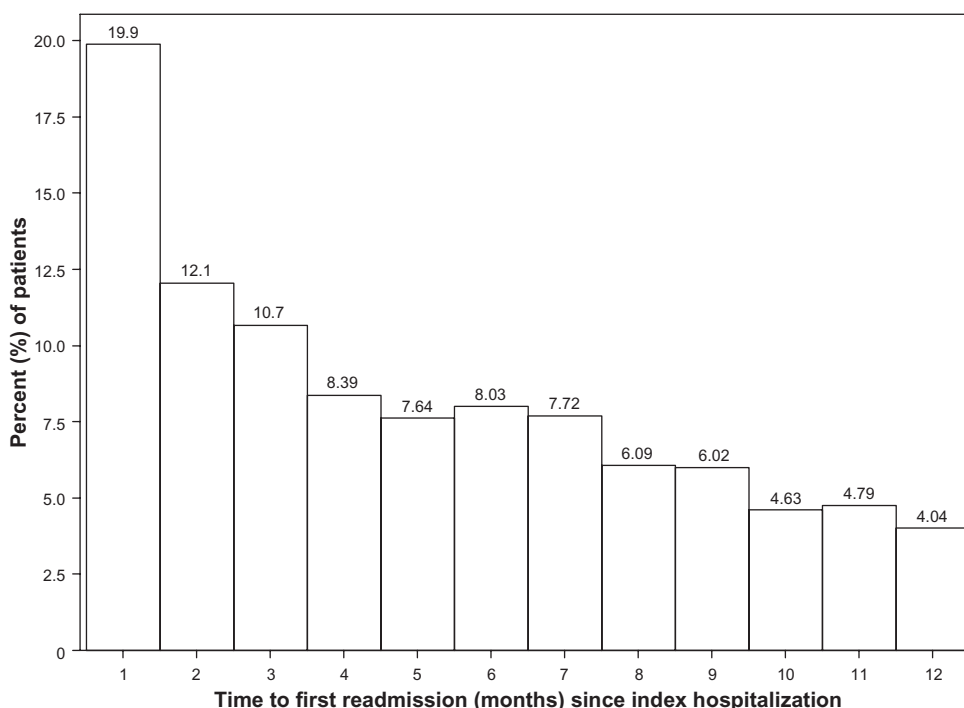


Figure 3 Time to first hospital readmission (months) since the index hospitalization for all readmitted patients ($n = 2,527$).

Table 1 Baseline demographic characteristics (% patients)

Variable	All readmissions ^a (n = 2,527)	COPD-related readmissions ^b (n = 1,681)	Not readmitted (n = 3,568)
Gender			
Male	40.80	40.21	41.28
Female	59.20	59.79	58.72
Age group, years*			
40–44	1.98	1.55	2.30
45–49	6.57	5.95	7.06
50–54	16.70	15.11	16.87
55–59	28.21	29.33	29.32
60–65	45.94	48.07	44.45
Residence			
Urban	76.61	77.10	75.25
Rural	23.39	22.90	24.75
US geographic region			
South	44.76	43.43	47.06
North central	36.09	36.29	33.21
West	9.85	10.59	10.34
Northeast	9.22	9.58	9.22
Unknown ^c	0.08	0.12	0.17
Insurance plan type			
PPO	57.18	57.53	57.96
HMO	14.13	15.53	13.65
Comprehensive	11.91	12.43	10.96
POS	10.37	8.51	10.01
Other	6.41	6.01	7.43

Notes: ^aDefined as all readmissions that occurred during the follow-up period, regardless of diagnosis; ^bdefined as a subset of all readmissions, which includes only readmissions where COPD was listed as a primary or secondary diagnosis; ^ctreated as missing in logistic regression. * $P = 0.0301$ COPD-related readmissions versus not readmitted.

Abbreviations: COPD, chronic obstructive pulmonary disease; PPO, preferred provider organization; HMO, health maintenance organization; POS, noncapitated point-of-service.

risk of readmission within 30 days or 90 days of the index hospitalization included moderate or severe liver disease and metastatic solid tumor. Insurance plan (health maintenance organization versus comprehensive), and respiratory medications (long-acting bronchodilator, systemic corticosteroids) were not significant risk factors for readmission within 30 days of the index hospitalization but were within 90 days.

Discussion

The results of this study have identified the following predictors associated with a heightened rate of hospital readmission: pre-index comorbidities, respiratory medication use, and health care utilization. Specifically, it was found that 30-day and one-year hospital readmission rates were approximately 8% and 41%, respectively, among patients with COPD aged 40–65 years who had employer-sponsored health insurance. Of the patients who were readmitted during the first 30 days post-index hospitalization, approximately two thirds (68%) were readmitted for COPD. Thus, given

Table 2 Pre-index Deyo–CCI and respiratory medications (% patients)

Variable	All readmissions ^a (n = 2,527)	COPD-related readmissions ^b (n = 1,681)	Not readmitted (n = 3,568)
Deyo–CCI comorbidities			
Chronic pulmonary disease	86.43**	91.55**	79.18
Diabetes	30.71**	27.66**	21.92
Congestive heart failure	23.23**	20.70**	11.46
Cerebrovascular disease	11.40**	10.23**	7.09
Malignancy	11.12**	10.59**	6.75
Peripheral vascular disease	7.84**	6.96*	5.16
Renal disease	7.64**	6.25**	3.34
Myocardial infarction	7.32**	7.50**	3.81
Diabetes with chronic complications	6.61**	5.77**	3.31
Rheumatologic disease	4.59*	3.57	3.11
Metastatic solid tumor	2.14*	1.84*	0.98
Peptic ulcer disease	1.94	1.73	1.46
Mild liver disease	1.62*	1.49*	0.70
Moderate or severe liver disease	0.87*	0.71*	0.25
Hemiplegia or paraplegia	0.67	0.48	0.34
AIDS	0.24	0.24	0.08
Dementia	0.12	0.00	0.08
Respiratory medications^c			
Short-acting bronchodilator	46.42**	49.79**	39.97
Systemic corticosteroid	39.14**	40.81**	31.33
Long-acting bronchodilator	35.22**	40.04**	27.72
Oxygen therapy	32.49**	35.51**	19.14
Inhaled corticosteroid	11.00	10.71	10.06
Leukotriene modifier	9.81*	10.05*	7.34
Mast cell stabilizer	0.04	0.06	0.03

Notes: ^aDefined as all readmissions that occurred during the follow-up period, regardless of diagnosis; ^bdefined as a subset of all readmissions, which includes only readmissions where COPD was listed as a primary or secondary diagnosis; ^cwithin 90-day period before index hospitalization. * $P < 0.05$ versus not readmitted; ** $P < 0.0001$ versus not readmitted.

Abbreviations: AIDS, acquired autoimmune deficiency syndrome; CCI, Charlson comorbidity index; COPD, chronic obstructive pulmonary disease.

that one third of readmissions were not primarily related to COPD, paying greater attention to comorbid illness during a COPD exacerbation might prevent readmission, in addition to providing better overall long-term management of COPD. These data underscore the importance of

Table 3 Pre-index health care utilization for COPD (% patients)

Variable	All readmissions ^a (n = 2,527)	COPD-related readmissions ^b (n = 1,681)	Not readmitted (n = 3,568)
Inpatient hospitalizations^{e**c}			
0	73.05	68.41	89.41
1	17.85	20.23	8.80
≥2	9.10	11.36	1.79
Emergency department visits^{e**c}			
0	28.49	25.76	32.48
1	40.09	38.19	47.03
≥2	31.42	36.05	20.49
Outpatient visits^{e**c}			
0	17.10	11.30	22.65
1	9.62	7.56	12.22
≥2	73.29	81.14	65.13

Notes: ^aDefined as all readmissions that occurred during the follow-up period, regardless of diagnosis; ^bdefined as a subset of all readmissions, which includes only readmissions where COPD was listed as a primary or secondary diagnosis; ^crequired COPD diagnosis in any primary or secondary position. ^{**} $P < 0.0001$ versus not readmitted for both readmission types.

Abbreviations: COPD, chronic obstructive pulmonary disease.

identifying predictors for hospital readmission. Such results are relevant and timely, given the recent initiation of US government programs designed to reduce the frequency of hospital readmissions, especially within the first 30 days after the initial hospitalization.^{9–11} Therefore, attention to patient comorbidities and pre-index/index health care service utilization may help identify hospitalized COPD patients at heightened risk for readmission.

Other health care claims database studies have reported higher rates of 30-day readmissions than this study. Approximately 20% of fee-for-service Medicare beneficiaries hospitalized for COPD were readmitted within 30 days in the period of 2003–2004.⁵ In addition, a CMS-sponsored Medicare claims analysis of risk-standardized readmission rates following COPD hospitalization during the index year 2008 reported a 30-day readmission rate of 21.8% among patients aged 65 years and older.¹⁰ Finally, according to a report based on the Healthcare Cost and Utilization Project of the Agency for Health Research and Quality, there were 190,700 index hospital admissions related to COPD across 15 states in 2008 among patients at least 40 years of age.¹⁷ The 30-day readmission rate related to COPD was between 7.1% and 17.3%, depending on whether COPD was the principal diagnosis or not.

Several factors may contribute to these differences. First, other studies included Medicare and/or Medicaid beneficiaries and/or uninsured patients. These patient populations are generally older and have poorer health status than those in this study. Second, uninsured patients are more likely to

Table 4 Significant predictors of readmission within 30 days of index hospitalization

Risk factor	OR	95% CI	P
All readmissions^a			
Moderate or severe liver disease	3.09	1.36–7.02	0.0070
Metastatic solid tumor	2.44	1.35–4.44	0.0034
Number of IP hospitalizations in pre-index period (≥2 versus 0) ^c	2.25	1.61–3.14	<0.0001
Congestive heart failure	1.41	1.11–1.78	0.0045
Diabetes	1.35	1.10–1.66	0.0046
Number of ICU days in index hospitalization	1.04	1.00–1.09	0.0479
Year of index hospitalization (2009 versus 2008)	0.77	0.61–0.97	0.0238
COPD-related readmissions^b			
Number of IP hospitalizations in pre-index (≥2 versus 0) ^c	3.20	2.24–4.58	<0.0001
Chronic pulmonary disease	2.52	1.56–4.05	0.0001
Metastatic solid tumor	2.26	1.21–4.25	0.0109
Number of IP hospitalizations in pre-index (1 versus 0) ^c	1.39	1.02–1.90	0.0357
Number of ICU days in index hospitalization	1.05	1.00–1.10	0.0356
Year of index hospitalization (2009 versus 2008)	0.76	0.58–0.99	0.0455

Notes: ^aDefined as all readmissions that occurred during the follow-up period, regardless of diagnosis; ^bdefined as a subset of all readmissions, which includes only readmissions where COPD was listed as a primary or secondary diagnosis; ^crequired COPD diagnosis in any primary or secondary position. Statistically significant odds ratios are reported when the corresponding two-sided P -values are ≤ 0.05 from multivariable stepwise logistic regression analyses.

Abbreviations: IP, inpatient; ICU, intensive care unit; CI, confidence interval; OR, odds ratio.

seek care from the emergency department than those who are insured, which could lead to a higher rate of emergency department visits leading to readmission. Third, the quality of care and treatment received during and immediately after hospitalization is potentially a factor. Studies suggest that early follow-up care after hospital discharge, continuity of care with a primary care physician or pulmonologist, and other supportive measures might reduce early readmission rates for COPD.^{18–20} Finally, individuals with employer-sponsored health insurance might be more likely to engage in preventative health care measures than uninsured individuals.

The association of comorbidities with readmission is not surprising given that COPD often coexists with other diseases.^{21–23} Other studies have reported high rates of mortality and adverse outcomes, including readmission, among COPD patients who have comorbid medical conditions.^{24,25} Consistent with other studies,^{20,22,26–28} congestive heart failure was associated with a higher rate of all readmissions within 30 or 90 days of the index hospitalization in the present study. Here, approximately one quarter of this age group had congestive heart failure during the year before the

Table 5 Significant predictors for readmissions within 90 days of index hospitalization

Risk factor	OR	95% CI	P
All readmissions^a			
Moderate or severe liver disease	3.10	1.47–6.54	0.0029
Number of IP hospitalizations in pre-index (≥ 2 versus 0) ^c	2.90	2.21–3.80	<0.0001
Metastatic solid tumor	1.69	1.01–2.81	0.0447
Congestive heart failure	1.50	1.25–1.79	<0.0001
Plan type (HMO versus comprehensive)	1.46	1.11–1.92	0.0072
Renal disease	1.43	1.09–1.89	0.0102
Number of IP hospitalizations in pre-index (1 versus 0) ^c	1.39	1.14–1.69	0.0013
Myocardial infarction	1.31	1.00–1.72	0.0481
Malignancy	1.29	1.01–1.65	0.0394
Number of ED visits in pre-index (≥ 2 versus 0) ^c	1.27	1.05–1.53	0.0149
Systemic corticosteroids ^d	1.22	1.06–1.41	0.0072
Diabetes	1.20	1.03–1.41	0.0199
Number of ICU days in index hospitalization	1.04	1.00–1.07	0.0413
COPD-related readmissions^b			
Number of IP hospitalizations in pre-index (≥ 2 versus 0) ^c	3.92	2.95–5.20	<0.0001
Moderate or severe liver disease	2.79	1.23–6.34	0.0143
Metastatic solid tumor	1.82	1.08–3.10	0.0258
Plan type (HMO versus comprehensive)	1.62	1.17–2.23	0.0034
Number of OP visits in pre-index (≥ 2 versus 0) ^c	1.61	1.29–2.01	<0.0001
Number of IP hospitalizations in pre-index (1 versus 0) ^c	1.61	1.14–2.26	0.0064
Long-acting bronchodilator treatment ^d	1.21	1.02–1.45	0.0313
Number of ICU days in index hospitalization	1.04	1.00–1.08	0.0348

Notes: ^aDefined as all readmissions that occurred during the follow-up period, regardless of diagnosis; ^bdefined as a subset of all readmissions, which includes only readmissions where COPD was listed as a primary or secondary diagnosis; ^crequired COPD diagnosis in any primary or secondary position; ^dwithin 90-day period before index hospitalization. Statistically significant odds ratios are reported when corresponding two-sided *P*-values are ≤ 0.05 from multivariable stepwise logistic regression analyses.

Abbreviations: CI, confidence interval; COPD, chronic obstructive pulmonary disease; ED, emergency department; HMO, health maintenance organization; ICU, intensive care unit; IP, inpatient; OP, outpatient; OR, odds ratio.

index hospitalization. In contrast, although close to one third of the patients had pre-index diabetes, this was not associated with a higher rate of COPD-related readmissions. This lack of association might be due, at least in part, to the regular interaction between patients with diabetes and their health care providers, resulting in early detection and treatment of COPD exacerbations.²⁹ Finally, pre-index use of systemic corticosteroids and long-acting bronchodilators, but not inhaled corticosteroids or oxygen therapy, were found to be significant predictors for readmission within 90 days of the index hospitalization. A recent Spanish study reported other factors that were associated with a greater probability of readmission among patients with COPD, including increased

systemic inflammation, increased respiratory failure, and reduced levels of physical activity.³⁰ Prospective, long-term studies are needed.

The strengths of this study include the following: examination of an understudied population of younger patients with COPD; the time periods (within 30 days or 90 days of index hospitalization) investigated in the predictors for readmission analysis are relevant to the current CMS and Affordable Care Act guidelines for reducing hospital readmission rates;⁹ use of a large patient database containing real-world information; and use of well known diagnosis and comorbidity instruments (ICD-9-CM codes and Deyo-CCI) that may be useful in other COPD database studies. However, it should also be noted that there are several potential limitations of this study. Given that we analyzed a group of patients with employer-sponsored health insurance, our results might not be generalizable to the entire US population.¹³ In addition, the results must be considered in light of the inherent limitations of a retrospective claims analysis, such as lack of mortality data, inability to determine definitively the occurrence of an exacerbation of COPD or measure severity and duration of disease; lack of randomization; potential for inaccurate or missing diagnosis coding; and lack of information on race, socioeconomic status, smoking history, and other potential confounding variables, such as planned readmissions.

Conclusion

Among commercially insured patients aged 40–65 years, the rate of readmission after an index hospitalization for COPD was 8.25% within 30 days after an index hospitalization for COPD. Significant predictors for readmission were largely related to comorbidities and pre-index/index health care utilization. Attention to such predictors may help identify hospitalized COPD patients at heightened risk for readmission.

Author contributions

All authors met the criteria for authorship as recommended by the International Committee of Medical Journal Editors and were fully responsible for all content and editorial decisions, and were involved at all stages of manuscript development.

Acknowledgments and disclosure

This research was supported by Pfizer Inc and Boehringer-Ingelheim Pharmaceuticals Inc. The authors would like to acknowledge Yanni Yu of Boehringer-Ingelheim Inc for her contributions to the initial design of the study. Editorial/medical writing support was provided by Cindy C Taylor

Supplementary table

Table S1 Comorbidity categories used in the Deyo-Charlson comorbidity index algorithm

Conditions	ICD-9 codes
Acquired autoimmune deficiency syndrome	042–044.9
Any malignancy, including lymphoma and leukemia	140–172.9, 174–195.8, 200–208.9
Cerebrovascular disease	430–438.xx
Chronic pulmonary disease	490–496, 500–505, 506.4
Congestive heart failure	428–428.9
Connective tissue disease	710.0, 710.1, 710.4, 714.0–714.2, 714.81, 725
Dementia	290–290.9
Diabetes mellitus	250–250.3, 250.7
Diabetes with end organ disease	250.4–250.6
Hemiplegia or paraplegia	344.1, 342–342.9
Metastatic solid tumor	196–199.1
Mild liver disease	571.2, 571.5, 571.6, 571.4–571.49
Moderate or severe liver disease	572.2–572.8, 456.0–456.21
Moderate or severe renal disease	582–582.9, 583–583.7, 585.xx, 586, 588–588.9
Myocardial infarction	412, 410–410.9
Peripheral vascular disease	441–441.9, 443.9, 785.4, V43.4
Ulcer	531–534.9

International Journal of COPD

Publish your work in this journal

The International Journal of COPD is an international, peer-reviewed journal of therapeutics and pharmacology focusing on concise rapid reporting of clinical studies and reviews in COPD. Special focus is given to the pathophysiological processes underlying the disease, intervention programs, patient focused education, and self management protocols.

Submit your manuscript here: <http://www.dovepress.com/international-journal-of-copd-journal>

Dovepress

This journal is indexed on PubMed Central, MedLine and CAS. The manuscript management system is completely online and includes a very quick and fair peer-review system, which is all easy to use. Visit <http://www.dovepress.com/testimonials.php> to read real quotes from published authors.