



RESEARCH ARTICLE

Open Access

# Non-addictive opium alkaloids selectively induce apoptosis in cancer cells compared to normal cells

Monireh Afzali<sup>1</sup>, Padideh Ghaeli<sup>2</sup>, Mahnaz Khanavi<sup>3</sup>, Maliheh Parsa<sup>1</sup>, Hamed Montazeri<sup>1</sup>,  
Mohammad Hossein Ghahremani<sup>1</sup> and Seyed Nasser Ostad<sup>1\*</sup>

## Abstract

**Background:** Cytotoxic effects of some of the members of papaveraceae family have been reported in Iranian folk medicine. Recent reports has indicated that alkaloids fraction of opium may be responsible for its cytotoxic effect; however, the mechanism of this effect is not fully understood. This study has been designed to investigate the selective cytotoxic, genotoxic and also apoptosis induction effects of noscapine, papaverine and narceine, three non-addictable opium alkaloids, on HT29, T47D and HT1080 cancer cell lines. Mouse NIH3T3 cell line was chosen to present non-cancerous cells and Doxorubicin was selected as the positive control.

**Methods:** Cells were treated by different concentrations of Noscapine, Papaverine, Narceine and doxorubicin; viability was assessed by MTT assay. The genotoxicity and apoptosis induction were tested with comet assay and Annexin-V affinity when the concentration of each these drugs is less than its IC50. In addition, the DNA damage and caspase activity of the T47D cells were examined and the results were compared.

**Results:** This study noted the cytotoxicity and genotoxicity of noscapine and papaverine, specifically on cancerous cell lines. Furthermore, papaverine induces apoptosis in all studied cancer cell lines and noscapine showed this effect in T47D and HT29 cells but not in NIH-3 T3 cells as noncancerous cell line. narceine also showed genototoxicity in the studied cell lines at its IC50 concentration.

**Conclusions:** This experiment suggests that noscapine and papaverine may be of use in cancer treatment due to their specific cytotoxicity and genotoxicity. However, further in vivo studies are needed to confirm its usefulness in cancer treatment.

**Keywords:** Cancer cell, Cytotoxicity, Genotoxicity, Narceine, Noscapine, Papverine

## Background

The agents which have the potential for induction of apoptosis may be considered as good candidates for cancer therapy due to their effect on the uncontrolled proliferation of malignant cells. In spite of excellent anti-tumor activities of common chemotherapy drugs, treatment will be restricted in some cases due to drug-resistance, low therapeutic index, severe side effects and different routes of administration [1]. Recently, in search for new treatments for cancer, there has been an emphasis on herbal and natural compounds. Cytotoxic effects of some members of Papaveraceae family have been considered in

Iranian and Indian medicine [2]. *Papaverine somniferum* L. (opium poppy) has been traditionally used in Chinese and Indian herbal medicine to cure some disorders including chronic cough, dysentery, diarrhea, rectum prolapse and gastrointestinal problems [3]. The contents of opium alkaloids include morphine, codeine, tebaine, noscapine, papaverine, narceine as well as little percentage of some other compounds [4]. Many studies revealed a remarkable anti-tumor activity of the alkaloid noscapine, a naturally-occurring benzyloquinoline alkaloid that constitutes about 2-10% of the alkaloid content of opium [5,6]. Furthermore, the anti-tumor activities of noscapine and its tubulin-binding property have been mentioned in many studies [7-12]. Noscapine inhibits the progression of melanoma, lymphoma, leukemia, breast cancer, colon cancer, ovarian carcinoma, glioblastoma, non-small cell lung

\* Correspondence: ostadnas@tums.ac.ir

<sup>1</sup>Department Toxicology & Pharmacology, Faculty of Pharmacy, Toxicology & Poisoning Research Center, Tehran University of Medical Sciences, 14155/6451 Tehran, Iran

Full list of author information is available at the end of the article

cancer and prostate cancer while it has a little or no significant toxicity to the kidney, heart, liver, bone marrow, spleen and small intestine [8,12-16]. Papaverine and narceine are two other benzylisoquinoline alkaloids constituting 0.5-3% and <0.5% of the alkaloid contents of opium, respectively. Papaverine has been used clinically as smooth muscle relaxant, anti-spasmodic for gastrointestinal disorders, cough suppressant and for treatment of erectile dysfunction (an unlabeled use). Although cytotoxic effect of papaverine and some of its derivatives has been observed in breast cancer, melanoma and prostate cancer [17-20], their mechanism of action has not been fully understood. Based on our knowledge, no previous study has examined the anti-cancer activities of narceine.

In this study three different human cancer cell lines have been chosen. HT29 colorectal carcinoma and T47D breast cancer cells as two of the most common types of human tumors and HT1080 fibrosarcoma cells as one of the most resistant cell lines to anti-cancer therapy. In addition, non-cancerous NIH-3 T3 cell line has been chosen to compare the effect of the agents between cancerous and non-cancerous cells and doxorubicin has been chosen as positive control. The purpose of this study is to show whether papaverine and narceine have selective cytotoxicity, genotoxicity and induction of apoptosis in cancerous cell lines as has been demonstrated in noscapine and was claimed in the traditional medicine.

## Methods

### Cell lines and chemicals

T47D (Breast, ductal-carcinoma, Human), HT-29 (Colon, epithelial-like carcinoma, Human), HT-1080 (connective tissue, fibro sarcoma, Human) and NIH-3 T3 (Swiss mouse embryo fibroblast) cell lines were all obtain from National Cell Bank (Pasture institute of Iran, Tehran). The cells were cultured in RPMI 1640 medium (Biosera, England) that was supplemented with 10% heat-inactivated fetal bovine serum (FBS; Biosera, England) as well as antibiotic vials containing 100 U/ml penicillin and 100 µg/ml streptomycin (Gibco, USA); then were incubated in a humidified atmosphere with 5% CO<sub>2</sub> at 37°C.

The materials used in the present study and the manufacturers provided them are as following: noscapine hydrochloride, agarose and low melting point agarose (LMP) from Sigma-Aldrich (USA), papaverine hydrochloride and ethanol from TEMAD Co. (Tehran, Iran), narceine trihydrate from Seqchem (UK), doxorubicin from Sobhan-daru (Tehran, Iran), MTT (3-[4,5-dimethylthiazol-2yl] -2,5-diphenyl tetrazolium bromide) powder and Caspase Assay fluorometric kit from Roche (Germany) and annexin V-PE apoptosis detection kit from Abcam (UK).

### In vitro cytotoxicity assay

The cells in logarithmic phase of growth were seeded into 96-well plates at a density of 10<sup>4</sup> cells per well and allowed to incubate overnight at 37°C. Cells were treated with different concentrations of noscapine, papaverine, narceine and doxorubicin and were incubated for 48 hours and then cell viability was determined by MTT assay. Briefly, 25 µl of 5 mg/ml MTT solution in phosphate-buffered saline was added and incubated for four hours at 37°C. The medium was removed and 100 µl dimethylsulfoxide (DMSO) was added to each well. The formazan salts were quantified by reading the absorbance at a test wavelength of 570 nm and a reference wavelength of 690 nm [21-23]. The IC<sub>50</sub> values were calculated from their cytotoxicity dose-response curves.

### Single cell gel electrophoresis (SCGE)/comet

The treated cells were diluted with RPMI 1640 + 10% FBS to final concentration of 175000 cells/ml. Cells were treated with 0.4% methanol in the CO<sub>2</sub> incubator for 3 hours. Each sample of 50 µl was harvested; then, immediately suspended in 450 µl of solution composed of 10 µl PBS and 75 µl 0.5% LMP agarose. The samples were then immediately coated on a uniform background of each rough microscope slide that had been previously prepared by 1% agarose. The agarose on the microscope slides was allowed to harden at 4°C for 10 minutes. After coating with supportive layer (LMP), slides were then placed in a chilled (4°C) lysis buffer (2.5 M sodium chloride, 100 mM EDTA, pH = 10, 10 mM Tris base, 1% sodium lauryl sarcosinate, 0.01% triton x-100) for 30 minutes to unwind the nuclear DNA at 4°C and drip dried. Slides were then immersed in the same buffer for 30 minutes at 24 V and 250 mA at room temperature. DNA damage was recognized by ethidium bromide and fluorescence microscope after neutralizing the gel with Tris buffer [24-26]. Pictures were captured electronically with an image analysis system and analyzed for fluorescence intensity. DNA damage was evaluated using the tail length and compared with the control group.

### Examination of PS exposure

Surface exposure of phosphatidyl serine (PS) by apoptotic cells was examined according to manufacturer's protocol. Briefly, cells were seeded in 6-well plates (3 × 10<sup>5</sup> Cells/well) and treated with the agents for 24 hours. Cells were collected and resuspended in binding buffer (10 mM HEPES/NaOH, pH 7.4, 140 mM NaCl, 2.5 mM CaCl<sub>2</sub>) then were incubated with Annexin V-FITC and PI for 15 minutes at room temperature and darkness. The fluorescent intensity of the cells was measured in FL1 (for FITC) and FL2 (for PI) using flow cytometry technique.

### DNA fragmentation

Following drug treatments,  $2 \times 10^6$  cells were collected and incubated in lysis buffer in ice for 20 minutes. The cells were centrifuged at 4°C at 12000 g for 30 minutes and then the supernatant was extracted after being centrifuged using 1:1 mixture of phenol: chloroform. Two equivalences of cold ethanol with one-tenth equivalence of sodium acetate were added; nucleic acid contaminant was decanted and exposed to water-RNase solution for 30 minutes at 37°C. The samples were electrophoresed through 1.5% agarose gel that contained ethidium bromide at 5 V for 5 minutes and then the voltage increased to 100 V for an hour [27].

### Caspase activity assay

The caspase activity was investigated based on the Homogeneous Caspases Assay fluorimetric kit. According to the protocol, the cells were cultured in a "black microplate with clear bottom" and were treated. Caspase Substrate in lysis buffer was added and was then incubated at 37°C for 2 hours. The free substrate was determined fluorimetrically at 521 nm and the activity of caspases was quantified by a calibration curve.

### Statistical analysis

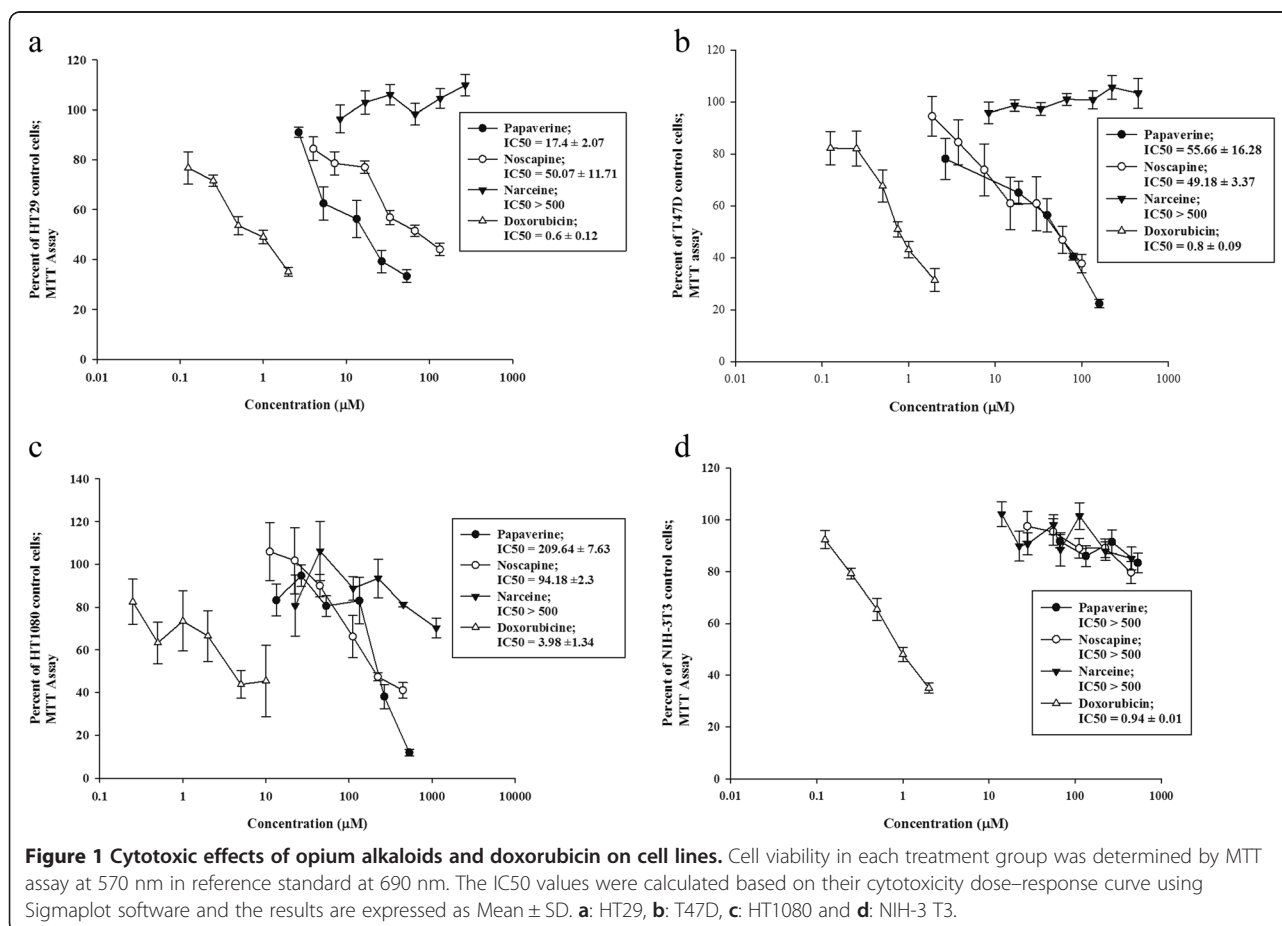
The results were analyzed using one way ANOVA followed by Tukey-Kramer Posttest. The p-value less than 0.05 ( $p < 0.05$ ) was considered significant.

Any experimental research that is reported in this manuscript have been approved by ethics committee of pharmaceutical sciences research center of Tehran University of Medical Sciences.

## Results

### Cytotoxicity of noscapine, papaverine, narceine and doxorubicin on breast cancer, colorectal carcinoma and connective tissue fibro sarcoma cell lines and non-cancerous cell line

The MTT curve showed that noscapine and papaverine had a dose-dependent cytotoxic effect on T47D, HT-29 and HT-1080 cell lines, with no cytotoxic effect on non-cancerous NIH-3 T3 cells. Narceine did not show any toxic effect on the studied cell lines and doxorubicin-induced cytotoxicity was demonstrated on both cancerous and noncancerous cells. The results are presented in Figure 1.



### Effect of noscapine, papaverine and narceine on DNA damage

The cells were evaluated with an image analysis system (CASP Comet assay Software Project) and the results are expressed in terms of L tail (length of tail) and are presented in Figure 2. Noscapine and papaverine selectively enhanced DNA damage on cancerous cells when compared with noncancerous cells ( $p < 0.001$ ). On the other hand, DNA damage was observed on all the cell lines after administration of doxorubicin ( $p < 0.001$ ). However, narceine induced DNA damage only on HT-1080 cells.

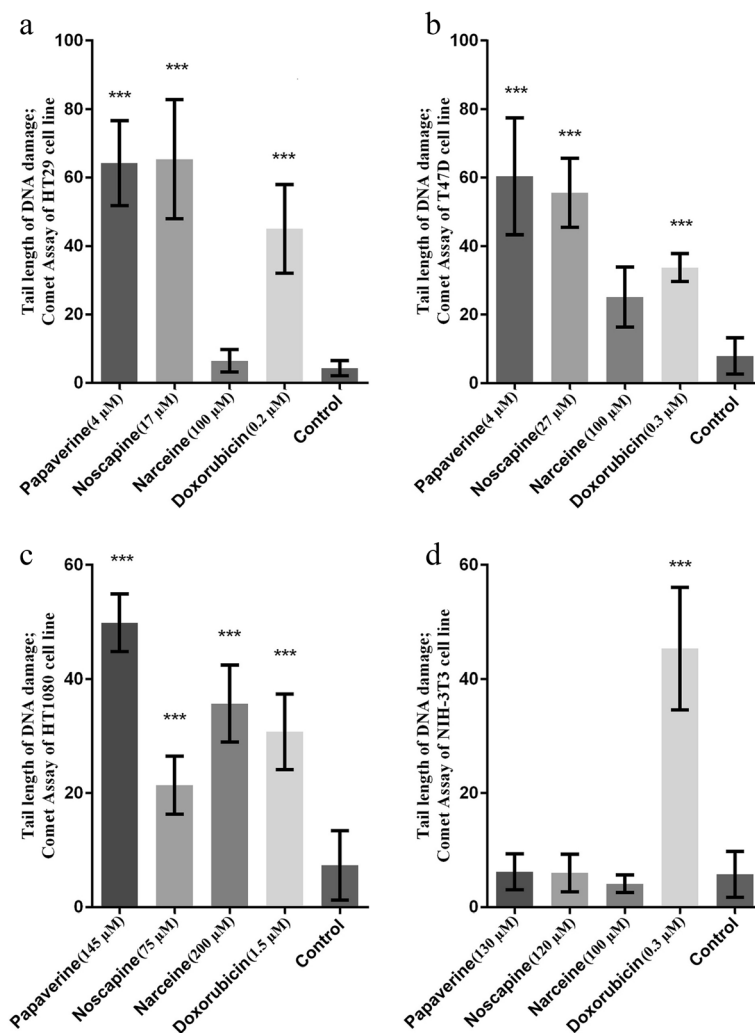
### Effect of noscapine, papaverine, narceine on induction of apoptosis

Cell membrane asymmetry was investigated by translocation of phosphatidylserine to the cell surface in

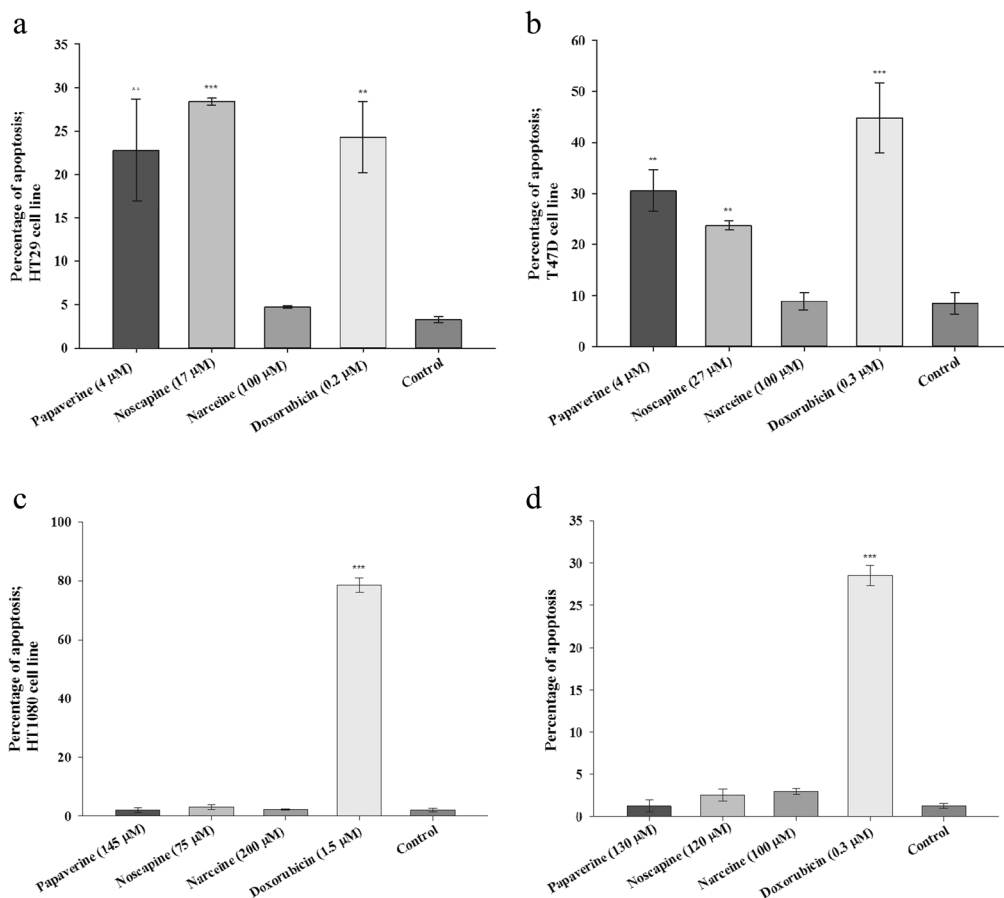
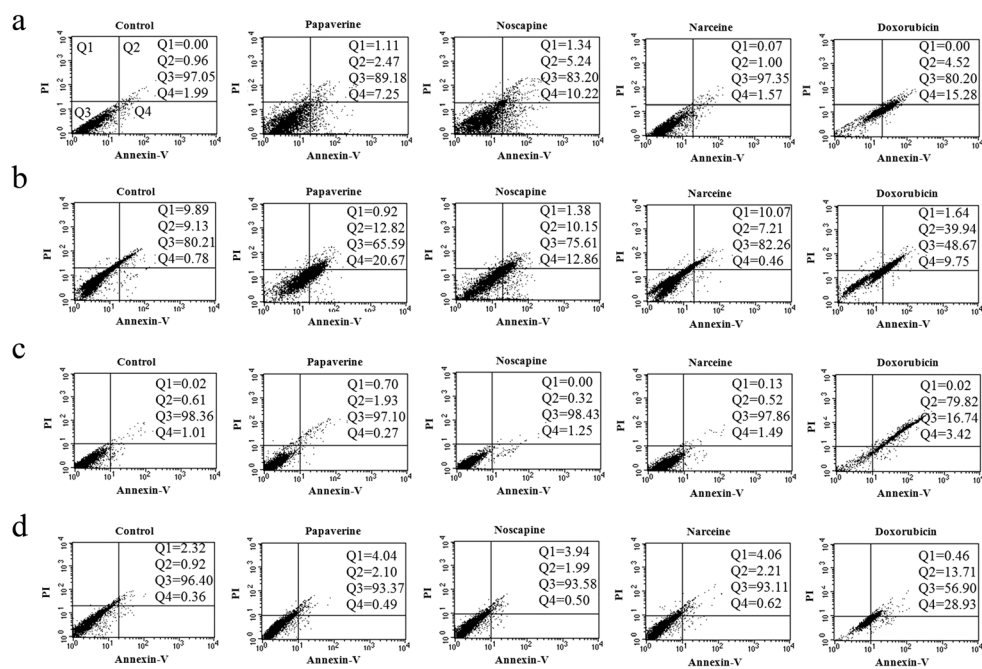
order to determine whether or not apoptosis was the major mechanism of cell death [28,29]. Based on this method, the apoptosis percentage has been reported and was compared with that in the control group (Figure 3). Results showed that doxorubicin has induced apoptosis in all the cell lines. However, noscapine and papaverine have induced apoptosis on HT-29 and T47D without any significant effect on NIH-3 T3 cell lines. However, the effects of narceine were different from the other two alkaloids. Narceine showed no apoptotic effect on the cell lines.

### DNA fragmentation in T47D cells treated by noscapine, papaverine, narceine and compared to doxorubicin

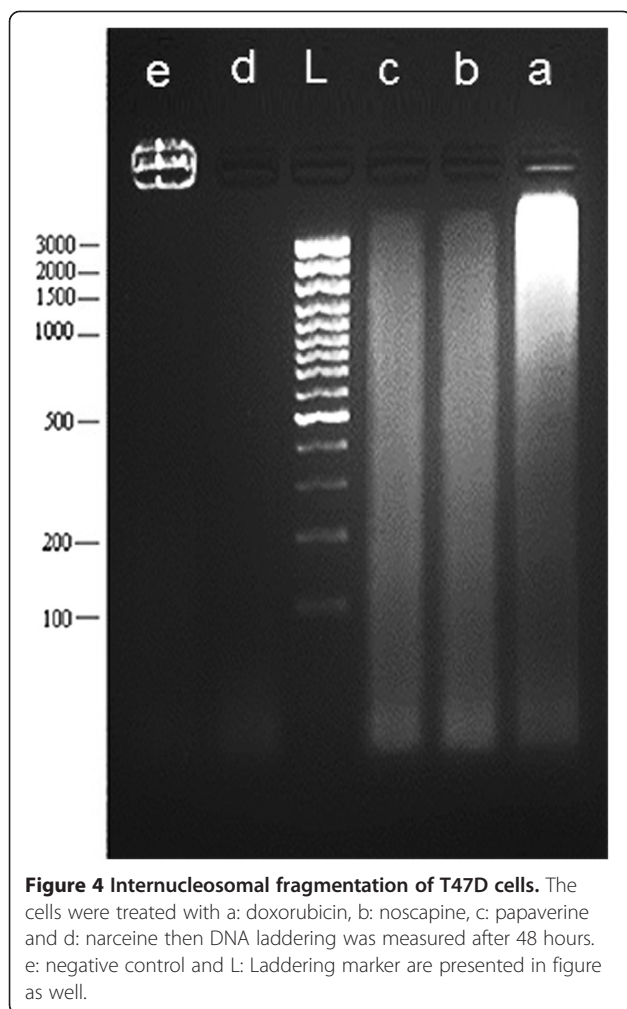
To further determine if apoptosis was the major mechanism of the drug-induced cell death, DNA fragmentation was investigated in T47D cells. Figure 4 shows clear



**Figure 2** The DNA damage detected in treated cells compared to control group. The concentrations less than IC<sub>50</sub> were used for treatment. The tail length of comet assay has been shown (Mean ± SD) and p-value has been reported. **a:** HT29, **b:** T47D, **c:** HT1080 and **d:** NIH-3 T3.



**Figure 3** The membrane asymmetry comparison between treated cells compared to control group. The concentrations less than IC50 were used for treatment. The percentage of cell population of each quadrant has been shown and the quantitative average of percentage of apoptotic cells of repeated examinations (Mean  $\pm$  SD) and p-value has been reported. **a:** HT29, **b:** T47D, **c:** HT1080 and **d:** NIH-3 T3.



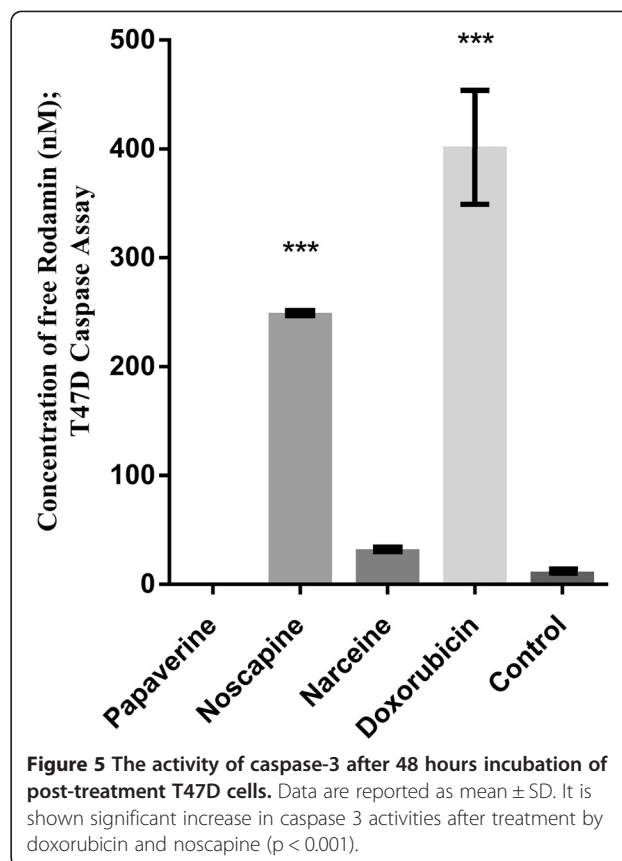
DNA fragmentation in cells treated by doxorubicin as positive control. Noscapine and papaverine induced DNA fragmentation in smaller sizes which were distinguishable from negative control group.

#### Caspase activity in T47D cells treated by noscapine, papaverine, narceine and compared to doxorubicin

Caspase-3 activity was measured by the cleavage of the substrate -Rodamin110- fluorimerically and was quantified by calibration curve (Figure 5). According to Figure 5 and in opposite to doxorubicin and noscapine, papaverine did not increase caspase activity.

#### Discussion

The present study noted that noscapine and papaverine had dose-dependent cytotoxic effects on cancer cell lines, without any cytotoxic effect on noncancerous NIH-3 T3 cells. Minor, non-significant increases are visible in cytotoxicity curves that maybe related to the non-specific toxicity caused by high concentrations of all



three alkaloids used in this study. Therefore the selective toxicity observed in the present project as well as the unselective doxorubicin-induced toxicity could have affected both cancerous and noncancerous cells. To determine whether or not apoptosis was considered as the major cell death pathway, the cell lines were examined by using annexin -V affinity, Comet assay, DNA laddering and Caspase assay. The annexin V assay has been widely accepted as a marker of apoptosis. Annexin V, a calcium-dependent phospholipid-binding protein, binds to PS residues on the cell membrane that are translocated to the outside of the cell due to apoptosis [28,29]. DNA damage is a hallmark of cell death [30] and alkaline single cell gel electrophoresis (SCGE) or comet assay is a very sensitive assay for detection of some kinds of DNA damage including single strand DNA breakage, alkaline-labile sites and other damage that generates DNA breaks [25,30]. Based on the results of this study, noscapine and papaverine induced DNA damage followed by apoptosis on HT-29 and T47D cell lines without significant effect on NIH-3 T3 as a noncancerous cell line. Apoptotic effect of noscapine was confirmed by the results of DNA fragmentation and caspase assay. It should be mentioned that even though many other studies have previously noted apoptosis induced by

noscapine on cancer cells, a limited number of research has focused on noncancerous cell lines [12,31]. Recently, noscapine has been recognized as a kinetic stabilizer compound. Interestingly, noscapine binds to different site of tubulin when compared to other known tubulin-binding agents. Additionally, even though noscapine's binding to tubulin site is not very strong, it is adequate enough to arrest the cell cycle [31]. Therefore, this feature might explain the selective cytotoxicity of noscapine. Based on the results of the present study and in contrast to noscapine and what was expected, papaverine did not increase caspase activity. Several studies have shown the apoptotic effect of papaverine [17,19,20,32]. However, a study on human promyelocytic leukemia HL60 cells declined cytotoxic and apoptotic effects of this alkaloid [33]. According to the results of DNA damage and apoptotic annexin-V assays, papaverine produced genotoxicity through induction of apoptosis in cancer cells. This lack of caspase activity has been also reported previously by Rubis et al. [20]. The results of the later study as well as our study may indicate that caspase-independent apoptosis pathways are involved in the programmed cell death related to papaverine. Further studies seem to be necessary to better clarify the exact mechanisms of papaverine-dependent apoptosis. Furthermore, in spite of DNA damage in HT-1080 after alkaloids treatment (Figure 2), apoptosis was not confirmed as a cell death pathway in this cell line. This contradiction might be related to intracellular repair system. However, the effects of narceine were different from those seen with the other two alkaloids on the cells in our study. Among the cells tested in this study, only HT-1080 cells were affected by DNA damage induced by narceine. However this damage did not result in apoptosis. It should be mentioned that all the findings about narceine were obtained despite the fact that no cytotoxicity was present when MTT assay was performed. Part of these findings may be related to other pathways of cell toxicity or death. However, more studies are needed to determine anti-tumor activity of narceine.

## Conclusion

In the present study, we demonstrated that noscapine and papaverine inserted selective cytotoxicity effects on cancer cell lines in comparison to doxorubicin which showed unselective cytotoxic effects on both malignant and non-malignant cell lines. This effect may present a new approach for using non-addictive opium alkaloids in the treatment of cancer. Further investigations are needed to clarify and confirm the selective cytotoxic effects of these alkaloids on other noncancerous cell lines.

## Competing interests

The authors declare that they have no competing interests.

## Authors' contributions

MA carried out the practical activities, participated in the design of the study and drafted the manuscript. PG helped to draft and edited the manuscript. MK participated in the sequence alignment. MP participated in practical activities, data analysis and helped to draft the manuscript. HM participated in practical activities and data analysis. MHG participated in design of the study, data analysis and helped to draft the manuscript. SNO participated in study design, coordination and data analysis and helped to draft the manuscript. All authors read and approved the final manuscript.

## Acknowledgment

This project was supported by of deputy of research at Tehran University of medical sciences (TUMS) (grant number 8960) and was a part of Dr. Afzali's thesis toward graduation to receive Pharm.D degree.

## Author details

<sup>1</sup>Department Toxicology & Pharmacology, Faculty of Pharmacy, Toxicology & Poisoning Research Center, Tehran University of Medical Sciences, 14155/6451 Tehran, Iran. <sup>2</sup>Department Clinical Pharmacy, Faculty of Pharmacy & Rational Drug Use Research Center, Tehran University of Medical Sciences, 14155/6451 Tehran, Iran. <sup>3</sup>Department Pharmacognosy, Faculty of Pharmacy, Tehran University of Medical Sciences, 14155/6451 Tehran, Iran.

Received: 22 July 2014 Accepted: 10 February 2015

Published online: 20 February 2015

## References

- Goodman LS, Gilman A, Brunton LL, Parker KL, Blumenthal DK, Buxton ILO. Goodman & Gilman's manual of pharmacology and therapeutics. New Delhi: McGraw-Hill; 2008.
- Aruna K, Sivaramakrishnan V. Anticarcinogenic effects of some Indian plant products. *Food Chem Toxicol.* 1992;30:953–6.
- Healthcare T. PDR for Herbal Medicines. 4, illustrated edn. Montvale: Thomson Healthcare; 2007.
- Evans WC. Trease and Evans. WB Saunders Harcourt Publishers Ltd. 2002;292:357–75.
- Aneja R, Miyagi T, Karna P, Ezell T, Shukla D, Vij Gupta M, et al. A novel microtubule-modulating agent induces mitochondrially driven caspase-dependent apoptosis via mitotic checkpoint activation in human prostate cancer cells. *Eur J Cancer.* 2010;46:1668–78.
- Ye K, Ke Y, Keshava N, Shanks J, Kapp JA, Tekmal RR, et al. Opium alkaloid noscapine is an antitumor agent that arrests metaphase and induces apoptosis in dividing cells. *P Natl Acad Sci.* 1998;95:1601.
- Zhou J, Gupta K, Aggarwal S, Aneja R, Chandra R, Panda D, et al. Brominated derivatives of noscapine are potent microtubule-interfering agents that perturb mitosis and inhibit cell proliferation. *Mol Pharmacol.* 2003;63:799–807.
- Aneja R, Lopus M, Zhou J, Vangapandu SN, Ghaleb A, Yao J, et al. Rational design of the microtubule-targeting anti-breast cancer drug EM015. *Cancer Res.* 2006;66:3782–91.
- Aneja R, Vangapandu SN, Lopus M, Chandra R, Panda D, Joshi HC. Development of a novel nitro-derivative of noscapine for the potential treatment of drug-resistant ovarian cancer and T-cell lymphoma. *Mol Pharmacol.* 2006;69:1801–9.
- Heidari N, Goliaei B, Moghaddam PR, Rahbar-Roshandel N, Mahmoudian M. Apoptotic pathway induced by noscapine in human myelogenous leukemic cells. *Anticancer Drugs.* 2007;18:1139–48.
- Jaiswal AS, Aneja R, Connors SK, Joshi HC, Multani AS, Pathak S, et al. 9-bromonoscapine-induced mitotic arrest of cigarette smoke condensate transformed breast epithelial cells. *J Cell Biochem.* 2009;106:1146–56.
- Mahmoudian M, Rahimi-Moghaddam P. The anti-cancer activity of noscapine: a review. *Recent Pat Anticancer Drug Discov.* 2009;4:92–7.
- Aneja R, Ghaleb AM, Zhou J, Yang VW, Joshi HC. p53 and p21 determine the sensitivity of noscapine-induced apoptosis in colon cancer cells. *Cancer Res.* 2007;67:3862–70.
- Jackson T, Chougule MB, Ichite N, Patlolla RR, Singh M. Antitumor activity of noscapine in human non-small cell lung cancer xenograft model. *Cancer Chemother Pharmacol.* 2008;63:117–26.
- Chougule M, Patel AR, Sachdeva P, Jackson T, Singh M. Anticancer activity of Noscopine, an opioid alkaloid in combination with Cisplatin in human non-small cell lung cancer. *Lung Cancer.* 2011;71:271–82.

16. Chougule MB, Patel AR, Jackson T, Singh M. Antitumor activity of noscapine in combination with doxorubicin in triple negative breast cancer. *PLoS one*. 2011;6:e17733.
17. Helson L, Lai K, Young CW. Papaverine-induced changes in cultured human melanoma cells. *Biochem Pharmacol*. 1974;23:2917–20.
18. Goto T, Matsushima H, Kasuya Y, Hosaka Y, Kitamura T, Kawabe K, et al. The effect of papaverine on morphologic differentiation, proliferation and invasive potential of human prostatic cancer LNCaP cells. *Int J Urol*. 1999;6:314–9.
19. Nohl H, Rohr-Udilova N, Gille L, Bieberschulte W, Jurek D, Marian B, et al. Ubiquinol and the papaverine derivative caroverine prevent the expression of tumour-promoting factors in adenoma and carcinoma colon cancer cells induced by dietary fat. *Biofactors*. 2005;25:87–95.
20. Rubis B, Kaczmarek M, Szymanowska N, Galezowska E, Czyski A, Juskowiak B, et al. The biological activity of G-quadruplex DNA binding papaverine-derived ligand in breast cancer cells. *Invest New Drugs*. 2009;27:289–96.
21. Morgan DML. Tetrazolium (MTT) assay for cellular viability and activity. *Methods Mol Biol*. 1997;79:179–83.
22. Plumb JA. Cell sensitivity assays: the MTT assay. *Methods mol med*. 2004;88:165–70.
23. Burton JD. The MTT assay to evaluate chemosensitivity. *Methods Mol Med*. 2005;110:69–78.
24. Lah B, Gorjanc G, Nekrep FV, Marinsek-Logar R. Comet assay assessment of wastewater genotoxicity using yeast cells. *Bull Environ Contam Toxicol*. 2004;72:607–16.
25. Kopjar N, Milas I, Garaj-Vrhovac V, Gamulin M. Alkaline comet assay study with breast cancer patients: evaluation of baseline and chemotherapy-induced DNA damage in non-target cells. *Clin Exp Med*. 2006;6:177–90.
26. Dhawan A, Bajpayee M, Parmar D. Comet assay: a reliable tool for the assessment of DNA damage in different models. *Cell Biol Toxicol*. 2009;25:5–32.
27. DNA Fragmentation Assays for Apoptosis Protocol. [hedricklab.ucsd.edu/Protocol/DNAFRAG.html]
28. Miller E. Apoptosis Measurement by Annexin V Staining. In: Langdon SP, editor. *Cancer cell culture: methods and protocols*, vol. Volume 88. Totowa: Springer; 2004. p. 191–202.
29. Jones S, Howl J. Applications of cell-penetrating peptides as signal transduction modulators for the selective induction of apoptosis. In: Langel U, editor. *Methods in molecular biology*, vol. Volume 683. Clifton: springer; 2011. p. 291–303.
30. Roos WP, Kaina B. DNA damage-induced cell death by apoptosis. *Trends Mol Med*. 2006;12:440–50.
31. Dhiman N, Sood A, Sharma A. Noscapine: An Anti-Mitotic Agent. 2013.
32. Gao YJ, Stead S, Lee RMKW. Papaverine induces apoptosis in vascular endothelial and smooth muscle cells. *Life Sciences*. 2002;70:2675–85.
33. Rosenkranz V, Wink M. Induction of apoptosis by alkaloids, non-protein amino acids and cardiac glycosides in human promyelotic HL-60 cells. *Zeitschrift für Naturforschung C—Journal of Biosciences*. 2007;62:458.

**Submit your next manuscript to BioMed Central and take full advantage of:**

- Convenient online submission
- Thorough peer review
- No space constraints or color figure charges
- Immediate publication on acceptance
- Inclusion in PubMed, CAS, Scopus and Google Scholar
- Research which is freely available for redistribution

Submit your manuscript at  
[www.biomedcentral.com/submit](http://www.biomedcentral.com/submit)

