


## REVIEW ARTICLE

# Present status and future directions: The restoration of root filled teeth

Francesco Mannocci<sup>1</sup> | Kerstin Bitter<sup>2</sup> | Salvatore Sauro<sup>3</sup> | Paolo Ferrari<sup>4</sup> |  
Rupert Austin<sup>5</sup> | Bhavin Bhuva<sup>1</sup> 

<sup>1</sup>Department of Endodontics, Faculty of Dentistry, Oral and Craniofacial Sciences, King's College London, London, UK

<sup>2</sup>Department of Operative and Preventive Dentistry, Charité - University Medicine Berlin, Berlin, Germany

<sup>3</sup>Departamento de Odontología, Facultad de Ciencias de la Salud, Universidad CEU-Cardenal Herrera Valencia, Alfara del Patriarca, Spain

<sup>4</sup>Department of Operative Dentistry, University of Parma, Parma, Italy

<sup>5</sup>Department of Prosthodontics, Faculty of Dentistry, Oral and Craniofacial Sciences, King's College London, London, UK

## Correspondence

Francesco Mannocci, Department of Endodontics, Faculty of Dentistry, Oral and Craniofacial Sciences, King's College London, Floor 25, Tower Wing, Guy's Hospital, London SE1 9RT, UK.  
Email: [francesco.mannocci@kcl.ac.uk](mailto:francesco.mannocci@kcl.ac.uk)

## Abstract

This narrative review will focus on a number of contemporary considerations relating to the restoration of root filled teeth and future directions for research. Clinicians are now more than ever, aware of the interdependence of the endodontic and restorative aspects of managing root filled teeth, and how these aspects of treatment are fundamental to obtaining the best long-term survival. To obtain the optimal outcomes for patients, clinicians carrying out endodontic treatment should have a vested interest in the restorative phase of the treatment process, as well as an appreciation for the structural and biomechanical effects of endodontic-restorative procedures on restoration and tooth longevity. Furthermore, the currently available research, largely lacks appreciation of occlusal factors in the longevity of root filled teeth, despite surrogate outcomes demonstrating the considerable influence this variable has. Controversies regarding the clinical relevance of minimally invasive endodontic and restorative concepts are largely unanswered with respect to clinical data, and it is therefore, all too easy to dismiss these ideas due to the lack of scientific evidence. However, conceptually, minimally invasive endodontic-restorative philosophies appear to be valid, and therefore, in the pursuit of improved clinical outcomes, it is important that the efficacies of these treatment protocols are determined. Alongside an increased awareness of the preservation of tooth structure, developments in adhesive bonding, ceramic materials and the inevitable integration of digital dentistry, there is also a need to evaluate the efficacy of new treatment philosophies and techniques with well-designed prospective clinical studies.

## KEYWORDS

crown, dentine bonding, endocrowns, onlay, post, root filled teeth

Bhavin Bhuva is the main author.

This is an open access article under the terms of the [Creative Commons Attribution](https://creativecommons.org/licenses/by/4.0/) License, which permits use, distribution and reproduction in any medium, provided the original work is properly cited.

© 2022 The Authors. *International Endodontic Journal* published by John Wiley & Sons Ltd on behalf of British Endodontic Society.

## INTRODUCTION

Root filled teeth may fail due to either biological or structural reasons. Causes of failure include persistent or recurrent endodontic disease, unrestorable caries, restorative failure, irretrievable cusp or crown fracture, vertical root fracture or periodontal disease. Whilst endodontic research is replete with clinical studies on the success rate of root canal treatment, it is acknowledged that structural failure is the most common reason for the extraction of root filled teeth (Al-Nuaimi et al., 2020; Nagasiri & Chitmongkolsuk, 2005). As a result, there has been increasing interest in the structural and biomechanical effects of root canal treatment and subsequent post-endodontic restorative procedures on restoration and tooth survival.

### Present status for the restoration of root filled teeth

The endodontic-restorative interface is currently, and importantly, a 'hot' topic within the endodontic community, whilst philosophies and techniques that facilitate dentine preservation are very much in 'vogue'. The frequency of publications in relation to minimally invasive endodontic-restorative techniques over recent years highlights the belief that residual tooth structure is a key determinant in tooth survival, whilst the results of such *in vitro* studies demonstrate the challenges of reaching tangible conclusions from the inconsistent results obtained (Plotino et al., 2017; Silva, Cabral, et al., 2021a; Silva, Versiani, et al., 2021b). However, it is certainly noteworthy to witness the level of interest in minimally invasive endodontic-restorative concepts, despite the apparent lack of clinical data to validate these techniques (Silva et al., 2022).

Therefore, research has focused on the impact of 'minimally invasive access cavity' preparations on the fracture resistance of root filled teeth, as a surrogate measure for tooth survival (Marinescu et al., 2020; Saberi et al., 2020; Santosh et al., 2021). Proponents of minimally invasive endodontic techniques cite that the dentine removal, primarily in the peri-cervical region, associated with 'traditional' access cavity and root canal preparation procedures may predispose the residual tooth structure to the crown and/or root fracture (Clark & Khademi, 2010).

A criticism of both historical and contemporary research is that the endodontic and restorative procedures are often considered as separate entities, rather than collectively. Based on the strength of arguments for minimally invasive 'intra-coronal' endodontic procedures and the scientific evidence demonstrating the importance of 'extra-coronal' tooth structure of adequate quantity and

quality, it seems logical that these should be considered together for root filled teeth to have optimal outcomes. However, there remains great conjecture as to the 'thresholds' of dentine removal which are capable of impacting tooth survival. Furthermore, the 'critical' areas for dentine removal (i.e., the peri-cervical dentine) have been described but not validated (Clark & Khademi, 2010). A recent study using chairside computer-aided design and manufacturing (CAD/CAM) technology to measure residual tooth volume failed to demonstrate the inferior survival of structurally compromised teeth that had undergone root canal retreatment (Al-Nuaimi et al., 2017). However, when the loss of tooth structure was retrospectively analysed within a multifactorial analysis, which also considered endodontic status, periodontal status, as well as several local and general factors, inferior tooth survival was more evident in teeth with greater loss of tooth structure (Al-Nuaimi et al., 2020).

There is a lack of defined guidance on the most appropriate definitive restoration following the completion of root canal treatment, in particular, which teeth require cuspal coverage (Sequeira-Byron et al., 2015) and the optimal type of restoration (i.e., full coverage crown or onlay). Furthermore, dilemmas relating to the timing of placement of the definitive restoration (Pratt et al., 2016) are still commonplace. The rapid evolution of new adhesive and ceramic materials (Signore et al., 2009), as well as digital scanning and fabrication technology (Alves de Carvalho et al., 2018) provide clinicians with much greater choice for the restoration of root filled teeth. Digital techniques have become increasingly popular, yet there are few studies to validate these techniques. Dentine bonding has also rapidly developed, but there is a lack of clarity on the optimal materials and techniques for both creating the ideal bonding substrate, as well as the bonding protocol itself. Interestingly, dentine bonding advancements have facilitated a drive to exploit the apparent benefits of these techniques and materials with relevance to emerging concepts such as deep margin elevation, post luting and the adhesive bonding of ceramic restorations. A renewed interest in endocrowns has been driven by the apparent virtues of adhesive bonding which can be achieved with appropriate isolation, restoration and dentine substrate preparation together with well-executed adhesive cementation.

The rationale for post placement in root filled teeth is still poorly understood and highly subjective. Little consensus on when a post should be used to facilitate core retention exists (Eckerbom & Magnusson, 2001). The innovation of adhesively based post systems (i.e., fibre) has changed the requirements for post dimensions, as well as those for post preparation. These techniques can now be employed within a minimally invasive philosophy and in conjunction with the use of adhesive bonding, permit

a greater unity between the endodontic and restorative phases of treatment.

A recent literature review on the restoration of root filled teeth (Bhuva et al., 2021), provides a detailed discussion of the clinical factors influencing the survival of post-endodontic restorations and teeth following root canal treatment *in vivo*. Therefore, the purpose of this narrative review is to discuss the current status of a number of contemporary concepts and techniques for the restoration of root filled teeth and consider directions for future research.

## SEARCH STRATEGY

For this narrative review, an unrestricted literature search was performed by four evaluators using specified keywords in the PubMed database. Eligibility criteria for included studies required the full text to be available, and to be in the English language, with a publication date up to May 2022. Keywords relating to the restoration of root filled teeth were searched using Medical Subject Heading (MeSH) terms. An additional manual search of references in the included papers was also carried out to identify potentially relevant research. Following the initial screening process, the abstracts of the included papers were read and considered for the suitability, and where relevant, the full text was retrieved.

## STRUCTURAL AND BIOMECHANICAL CHALLENGES OF RESTORING ROOT FILLED TEETH

The structural and biomechanical considerations which affect root filled teeth are complex and diverse and should be considered alongside operative and patient factors (Bhuva et al., 2021; Table 1).

These factors, in combination, affect restoration and tooth survival, however, it is not possible to quantify the relative contribution of each variable. That said, it appears that the loss of sound tooth structure is the most critical contributory factor. Evidence also exists for the impact of the ferrule effect (Ferrari et al., 2012), and in combination, the level of root canal treatment difficulty, residual tooth structure, as well as the medical and dental status of the patient (Al-Nuaimi et al., 2020).

The magnitude of changes to the biomechanical properties of dentine that result from loss of vitality, and the effects of endodontic and restorative procedures, have not been clearly validated. However, a reduction in the free or unbound water content within the porosities

**TABLE 1** Structural and biomechanical factors affecting root filled teeth.

	Structural integrity	Loss of sound tooth volume due to caries, fracture or previous restorative procedures (Ikram et al., 2009)	Access cavity preparation (Reeh, 1989; Pantvisal & Messer, 1995)	Root canal preparation (Hansen & Asmussen, 1993)	Effect of preparation for definitive restoration (Reeh et al., 1989)
Biomechanical effects	Changes in free water content (Helfer et al., 1972; Sedgley & Messer, 1992)	Collagen alteration (Driscoll et al., 2002; Reddington et al., 2003)	Effect of irrigants and medicaments (Grigoratos et al., 2001; Marending et al., 2007)	Effect of root canal filling materials and techniques (Fuss et al., 2001)	Loss of proprioception (Loewenstein & Rathkamp, 1955; Randow & Glantz, 1986)

found in the dentine matrix and dentinal tubules themselves has been cited as an important reason for the diminished viscoelastic properties of root filled teeth (Kishen & Asundi, 2005; Kishen & Vedantam, 2007; Yan et al., 2017). With the loss of vitality, and a reduction in hydration within the dentine matrix, the size and organization of the collagen fibrils are altered, resulting in loss of plasticity and increased stiffness of the dentine structure (Kishen, 2015). It has been suggested that fully hydrated dentine provides a mechanism to hydraulically dissipate undesirable occlusal and nonocclusal forces away from the root dentine (Pashley, 1990); in the absence of this plasticity, the tooth structure behaves more as a brittle, than tough material (Kishen & Asundi, 2005). These alterations confer increased residual strain and reduced microhardness and resistance to cyclical fatigue, resulting in an increased risk of root fracture (Arola & Reprogl, 2005; Nadeau et al., 2019; Patel et al., 2022).

It is noteworthy to consider the conflicting findings of studies where no changes to the viscoelastic properties of dentine of root filled teeth have been observed (Papa et al., 1994; Sedgley & Messer, 1992). Methodological factors could explain the conflicting results obtained in these laboratory studies. For example, the root filled specimens used in a study by Sedgley and Messer (1992) were stored in saline prior to testing. This prior storage protocol may have permitted rehydration and potential re-establishment of the viscoelastic properties of the included dentine samples. Similarly, Papa et al. (1994) stored the extracted teeth in aluminium foil until the experimental testing was performed. It has been shown that under normal conditions, 80–85% of dentinal free water loss occurs within 2 h (Jameson et al., 1993). Therefore, the lack of difference observed in the biomechanical performance of root filled teeth in these studies can potentially be explained by the hydration status of the included samples at the time of testing (Patel et al., 2022).

In view of the increased propensity for root filled teeth to undergo microcracks and root fractures, the development of micro-tissue engineering processes to enhance the biomechanical properties of dentine offers exciting, albeit currently unrealized, potential (Li et al., 2020; Rashidi et al., 2014). Research relating to this area appears to focus on two key areas (Li et al., 2020). First, the induction of additional molecular collagen cross-links using synthetic and/or natural chemicals could help to overcome some of the undesirable consequences of loss of vitality (Fawzy et al., 2012; Sung et al., 1999). Furthermore, biopolymeric nanofillers can be infiltrated into the dentine matrix to improve its viscoelastic properties (Kishen et al., 2016).

Several laboratory studies have demonstrated improved biomechanical properties of dentine following the incorporation of biopolymeric nanoparticles (Enrich-Essvein et al., 2021; Li et al., 2020). Proanthocyanidin-functionalized hydroxyapatite nanoparticles (nHAP\_PA) have been used to remineralize and stabilize the collagen matrix of dentine (Enrich-Essvein et al., 2021). In this study, it was demonstrated that the 1 min application of 15% nHAP\_PA increased the flexural strength (MPa) of the included samples. Using nanoindentation, a laboratory study assessed the elastic modulus and hardness of *ex vivo* root dentine samples that had been treated with photodynamically (photodynamic activated) cross-linked chitosan nanoparticles (CSnps; Li et al., 2020). This process has been reported to produce rapid cross-linking within the collagen arrangement, initiated by exposure to a photosensitizer with a specific wavelength (Chan et al., 2007; Wollensak & Iomdina, 2009). Essentially, the microtissue engineering of the root canal dentine substrate is the result of CSnps forming a conditioning layer (Kishen et al., 2008, 2016) after which polyanionpolycation ionic complexes are formed (Kishen et al., 2008). The nanoparticles act as hydrophilic space fillers between the collagen fibrils, effectively acting as a plasticizer (Li & Kishen, 2018), thereby improving the flexibility and associated biomechanical characteristics of the treated dentine (Madhavan et al., 2010; Shrestha et al., 2011).

Naturally occurring collagen cross-linking agents rich in proanthocyanidin have also shown some promise in improving the viscoelastic properties of dentine (Castellan et al., 2011). The results of this study showed that grape and cocoa seed extracts were capable of improving the elastic modulus of dentine by stabilizing collagen matrices through exogenous cross-linking.

The use of nanopolymeric filler particles to induce collagen cross-linking and inhibit structural degradation is an interesting area of research that might be applied to root filled teeth to help overcome some of the deleterious effects of loss of unbound water within porosities in the dentine matrix. Further laboratory and clinical research should be carried out to evaluate these exciting concepts.

## STUDY HETEROGENEITY AND CHALLENGES FOR RESEARCH RELATING TO THE RESTORATION OF ROOT FILLED TEETH

The lack of well-controlled prospective studies relating to the restoration of root filled teeth is primarily due to the unique anatomical, structural and biomechanical considerations for each tooth, as well as the difficulty in both quantifying and standardizing both

the assessment methodology and operative protocols with respect to tooth volume loss. In addition to these considerations, the 'elephant in the room' appears to be the effect of occlusal factors on the survival of root filled teeth, which is understandably poorly studied, yet may significantly influence the biomechanical performance of root filled teeth. The observations provided by studies on the survival of root filled teeth in relation to tooth location in the arch (Creugers et al., 2005; Fokkinga et al., 2007) and the number of proximal contacts (Aquilino & Caplan, 2002; Caplan et al., 2002; Caplan & Weintraub, 1997), appears to demonstrate a noticeable advantage for nonterminal teeth and those with proximal contacts (Alley et al., 2004; Aquilino & Caplan, 2002). The most striking observation made by Aquilino and Caplan (2002) was that the failure rate for second molars was markedly greater than for any other tooth type, suggesting that the occlusal and nonocclusal forces imparted on these teeth were likely to be a key factor in their inferior survival.

A further indicator of the relevance of occlusal forces is the prevalence of cracked teeth in relation to tooth location reported in the scientific literature, with terminal teeth most frequently affected (Kang et al., 2016; Leong et al., 2020). Furthermore, terminal cracked teeth have been shown to have the poorest prognoses of any, suggesting the same occlusal factors which were responsible for causing the crack initially will also affect the long-term post-treatment survival (Kang et al., 2016; Sim et al., 2016; Tan et al., 2006). More than ever, the prevalence of cracked teeth is being acknowledged, and whilst this is at the forefront of endodontic case assessment, there is still a considerable under-diagnosis of cracked teeth due to a lack of utilization of magnification and coaxial illumination. It is the authors' opinion that the use of magnification with coaxial lighting is incorporated into undergraduate dental training so that from an early stage, students can diagnose, prognosticate, and treat cracked teeth through experiential learning.

A major limitation of many clinical studies relating to the survival of root filled teeth is the relatively short recall period (3–5 years). To compare treatment modalities over this time scale makes it difficult to make meaningful insights into longevity. However, it should also be acknowledged that both prospective and retrospective studies have demonstrated that the majority of restorative, endodontic and/or terminal complications of root filled teeth occur within the first 3 years of initial treatment (Al-Nuaimi et al., 2020; Salehrabi & Rotstein, 2004). This finding is even more relevant for teeth undergoing root canal retreatment (Kwak et al., 2019). The results of studies with longer recall periods are often adversely impacted by poor recall rates,

which may be as low as 28% (Fokkinga et al., 2007), reducing the meaningfulness of the findings.

A further consideration for interpreting clinical data which is based primarily on retrospective analysis is the impact of clinical bias in relation to the choice of definitive restoration (Bhuva et al., 2021). It is more than conceivable that clinicians may elect not to place indirect restorations on teeth with compromised prognoses, whether that be for periodontal, restorative or endodontic considerations. This is one of the most fundamental features of prospective study design, which ensure that selection bias of this type is minimized.

## CURRENT PERSPECTIVES ON RESIDUAL TOOTH STRUCTURE

Evaluating, and more importantly, comparing outcomes of clinical studies relating to root filled teeth is extremely challenging. Several criteria have been used to assess the residual tooth structure; the lack of consistency in the assessment tools across studies makes it very difficult, if not impossible, for systematic reviews or meta-analyses to combine these data. Furthermore, most of the assessment criteria are qualitative rather than quantitative, and therefore highly prone to bias and subjectivity. The residual tooth structure has been classified qualitatively and quantitatively in several ways.

### Ferrule effect

*In vitro* studies relating to the impact of the ferrule effect on the fracture resistance of root filled teeth have shown the improved performance of teeth with adequate supramarginal tooth structure (Ichim et al., 2006; Juloski et al., 2012; Ma et al., 2009; Sorensen & Engelman, 1990). However, clinical outcomes show great variability, although there is still a trend towards improved survival with increased ferrule effect (Cagidiaco et al., 2008; Creugers et al., 2005; Ferrari et al., 2007; Schmitter et al., 2007; Setzer et al., 2011). The outcomes observed in clinical studies are further complicated by the inclusion of post-retained restorations (Naumann et al., 2018). There are several other factors that need to be considered when evaluating the results of clinical research, which include the definition of the ferrule effect in terms of height (Schmitter et al., 2007) and thickness (Cloet et al., 2017), as well as retrospective study design (Setzer et al., 2011). Due to the difficulties in standardizing prospective research, it is not possible to determine tangible conclusions on the influence of the ferrule effect on the survival of root filled teeth. Meta-analyses of the available data infer



evidence for the benefit of the ferrule effect in premolar teeth, whilst it is not possible to draw such strong determinations for molar teeth (Skupien et al., 2016).

## Number of residual walls

An alternative technique to assess the residual tooth structure which has been used in clinical studies is by evaluation of the residual walls (Cagidiaco et al., 2007; Dammaschke et al., 2013; Mannocci et al., 2002), which may be assessed in terms of the number (Cagidiaco et al., 2008; Ferrari et al., 2012) or percentage (Creugers et al., 2005; Fokkinga et al., 2008; Schmitter et al., 2007). There is significant heterogeneity in what defines a residual wall, and as is the case for the ferrule effect, clinical findings are again affected by confounders. However, despite the limitations of largely retrospective research, the number of residual walls does appear to be an important variable for the survival of root filled teeth. Teeth with no or only one residual wall appear to have reduced survival rates when compared to those with more than one wall (Damaschke et al., 2013; Ferrari et al., 2012; Nagasiri & Chitmongkolsuk, 2005).

## Residual tooth volume

Although there is currently limited clinical data relating to the impact of residual tooth volume on the survival of root filled teeth, recent studies have utilized digital CAD-CAM scanning To assess the impact of this variable on the survival of root filled teeth (Al-Nuaimi et al., 2017, 2020). With this methodology, the issues relating to the variability of interpretation and assessment of the ferrule effect and residual walls are overcome, as all measurements are volumetrically accurate, permitting standardization, not only within the studied sample but also across other studies.

One of the most striking benefits of digital scanning is that residual tooth volume measurements can be made to encompass the ferrule effect/remaining walls in all dimensions and at the same time, the residual coronal dentine. It is the authors' opinion that these nonsubjective, measurable, reproducible and tangible measurements should be utilized further for future prospective clinical outcome studies. Philosophies such as minimally invasive endodontic and restorative techniques could potentially be studied clinically with the use of digital scanning, and furthermore, the potential critical regions for tooth structure removal during endodontic-restorative procedures were identified.

The existing studies which have used digital scanning, show some correlation between inferior survival and teeth with less than 30% residual tooth volume (Al-Nuaimi et al., 2017, 2020). The results also provide some interesting insight in respect of more compromised teeth being more susceptible not only to structural but also to endodontic failure (Al-Nuaimi et al., 2017).

Future research should be directed towards quantitative tooth structure assessment during endodontic-restorative procedures. As CAD-CAM scanning evolves, it will hopefully be possible to measure intra-coronal volumetric tooth structure changes, particularly within the peri-cervical region of the tooth. It is the authors' opinion that studies assessing the survival of restorations and teeth do not take into consideration of occlusal factors sufficiently within the study design or analysis. Whilst tooth location (Aquilino & Caplan, 2002) and the number of proximal contacts (Aquilino & Caplan, 2002; Caplan et al., 2002; Caplan & Weintraub, 1997) have been studied, the details of occlusion for the included tooth, such as involvement in excursive/protrusive contacts, the presence of working/nonworking side interferences and identification of parafunctional habits could also be included in the preoperative assessment.

## DENTINE SUBSTRATE MODIFICATION AND ADHESIVE BONDING

The fundamental concepts of adhesive bonding include the micromechanical adhesion of composite restorations via etching of enamel, and the creation of an interdiffusional interface of bonding resin and dentine. These protocols have been applied, with no substantial differences, to root filled teeth and those with vital pulps alike. Currently, three-step dentine bonding agents remain the gold standard in terms of achieving long-term bonding to dentine (Sauro & Pashley, 2016). Their use is based on the application of a hydrophilic primer to etched dentine, to penetrate the dentinal tubules and the demineralized collagen fibrils, prior to the application of a hydrophobic adhesive based on bisphenol A-glycidyl methacrylate (Bis-GMA) and triethylene glycol dimethacrylate (Carvalho et al., 1996). Nevertheless, such bonding strategies remain technique-sensitive, as clinicians tend to over-dry the dentine, causing the collapse of collagen fibrils and a consequent lack of resin infiltration within the hybrid layer (Kanca, 1996). The clinical consequences of a lack of infiltration, are marginal discolouration, degradation of the hybrid layer and microleakage, which may then progress into secondary

caries (Pashley, 1991; Söderholm, 2007), and potentially cause re-infection of root filled teeth. Moreover, early degradation of the hybrid layer is even more evident in the now widely used fifth generation of adhesive systems (i.e., self-priming adhesives), which were developed by combining the primer and adhesive into one solution, to reduce the number of steps necessary to complete the bonding procedure, from three to two (Van Meerbeek et al., 2003).

In the early 2000s, sixth-generation adhesive systems were developed and identified as 'self-etching (SE) primers and adhesives'. Such adhesive systems do not require dentine acid-etching with phosphoric acid due to the presence of specific functional acidic monomers (i.e., 10-MDP: 10-methacryloxydecyl-dihydrogen-phosphate) within the formulation of the primer. Such functional monomers can demineralize and prime enamel and dentine substrates simultaneously, which can then be subsequently bonded using separate solvent-free, relatively hydrophobic adhesives (Pashley et al., 2011; Van Meerbeek et al., 2003).

The latest adhesives are known as 'all-in-one' and/or 'universal' adhesives. These combine etchant, primer and adhesive in a single solution and can be used both with phosphoric acid etching pre-treatment and as self-etching adhesives (Pashley et al., 2011; Perdigão et al., 2013). Both self-etching primers and all-in-one adhesives are extensively used in the bonding of composite restorations and cores in root filled teeth, and also in the bonding of fibre and metal posts.

To the best of authors' knowledge, none of the changes to the dentine and enamel substrates that have been associated with loss of vitality or root canal treatment procedures have resulted in a change of bonding strategy. This applies to the loss of free water content (Helfer et al., 1972) and collagen alteration (Driscoll et al., 2002; Reddington et al., 2003) which arguably both contribute to the increased fracture susceptibility of root filled teeth. More recently, several strategies have been suggested to improve bonding to the dentine of root filled teeth, in particular, the use of cross-linked chitosan nanoparticles was found to reduce the degradation of dentinal collagen and improve the stability of the adhesive interface (Xiong et al., 2020).

Several promising strategies have been advocated to reduce the stress concentration at the bonding interface that usually occurs during the light-curing of resin composites, all of which have the potential to increase the longevity of both direct and indirect composite restorations. Unfortunately, to the best of authors' knowledge, none of these strategies have gone past initial clinical trials (Nikolaenko et al., 2004).

The use of 'stress-absorption' resin flowable liners or glass-ionomer cements employed as the base and/or

dentine-substitute materials (Irie et al., 2004) may attenuate the polymerization stresses generated at the dentine-bond interface, reducing the risk of gap formation, microleakage and secondary caries (Sampaio et al., 2011; Sauro et al., 2018). This is of particular importance when nonaxial stresses are generated during parafunction (e.g., bruxism), and which in turn, may significantly affect the integrity of the bonding interface (Khvostenko et al., 2015; Toledano et al., 2015).

The use of air-abrasion systems in combination with aluminium oxide or bioactive glasses to prime dentine following endodontic treatment, and prior to restorative procedures, will help to remove root filling material/sealer residues and provide smoother dentine walls with rounded internal line angles; this may reduce the stress concentration along the bonding interface due to a reduced C-factor (Banerjee, 2013; Spagnuolo et al., 2021) and also reduce crack propagation and the probability of fatigue failure (Ayad et al., 2011). Furthermore, when performing dentine air-abrasion using bioactive glass, a 'bio-reactive' smear layer is produced on the dentine surface, which is then incorporated within the bonding interface created using resin-modified glass ionomer cements or SE adhesives. Such bioactivity is due to the hydrated silica  $\text{Si}(\text{OH})_4$  produced by bioglasses when in contact with water or saliva, and may stop the degradation processes at the bonding interface (Sauro, Watson, Thompson, & Banerjee, 2012b; Sauro, Watson, Thompson, Toledano, et al., 2012a). The bio-reactive layer condensates within the demineralized dentine collagen (Pashley, 1991) fossilizing the dentine proteases (e.g., metalloproteinases (MMPs)) and serving as a template for the precipitation of  $\text{Ca}^{2+}$  and  $\text{PO}_4^{3-}$  which may remineralize and protect the hybrid layer. Moreover, the alkaline pH generated by bioactive glasses, may also have antibacterial properties and reduce the risk of secondary caries (Bauer et al., 2019).

Other methods advocated to preserve the durability of dentine-bonded interfaces include the pre-treatment (1 min) of acid-etched dentine using chlorhexidine (2% CHX) before bonding. Indeed, *in vitro* (Yiu et al., 2012) and *in vivo* (Carrilho et al., 2007) studies have demonstrated that CHX may inhibit the action of several types of MMPs, as well as dentinal cysteine cathepsins, which cause degradation of the hybrid layer (Scaffa et al., 2012).

Quaternary ammonium compounds (QACs) can be employed to reduce the enzyme-mediated collagen degradation within the hybrid layer. These are molecules with lower molecular weight than CHX, which may easily infiltrate the demineralized dentine, leading to a more reliable anti-MMP effect within the hybrid layer (Pupo et al., 2014). Benzalkonium chloride is a QAC with potent antibacterial properties that have been advocated as a potential anti-proteolytic agent to be used before bonding procedures

(Sabatini & Patel, 2013). However, CHX was found to be more efficient in inhibiting MMPs and cathepsin-K than 2% benzalkonium chloride (Imazato et al., 2006). Moreover, light-curable QAMs such as methacryloyloxy-dodecylpyridinium bromide have also shown encouraging results in reducing the proteolytic degradation of dentine-bonded interfaces, as well as, inhibiting bacterial growth and reducing the risk of secondary caries (Sauro, Watson, Thompson, & Banerjee, 2012b). A further useful approach to reducing the proteolytic action of MMP-2 and MMP-9 is based on the use of materials able to release fluoride (F<sup>-</sup>) ions (Feuerstein et al., 2007).

Whilst the above considerations for adhesive bonding may not have been shown to influence clinical outcomes, it is important to appreciate that optimal bonding may be more relevant to modern treatment concepts such as minimal preparation onlay restorations, adhesive post cementation and deep margin elevation.

## COMPOSITE RESIN MATERIALS

Composite resin is frequently used as both a definitive restorative and core material following root canal treatment. The development of self-adhesive resins and bulk-fill materials, for placement within the pulp chamber, has provided greater applicability and reduced technique sensitivity (Hayashi et al., 2019).

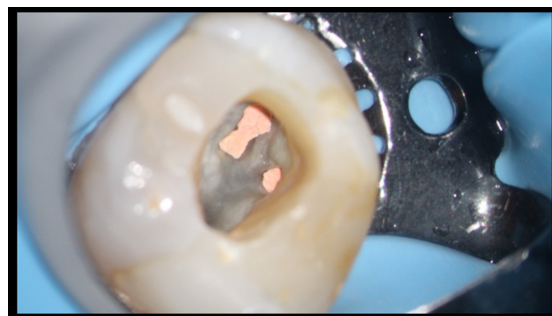
There are a number of challenges to placing composite resin materials for core, or definitive restoration, specific to root filled teeth. Importance of removing remnants of root filling materials and sealer residues (Mannocci et al., 2008) is paramount. The use of fine ultrasonic tips with copious water spray may be of great benefit for this purpose. Angled, endodontic microsurgical tips may be of particular use in minimally invasive access cavities in molar teeth, as they can be used to clean the undercuts within the pulp chamber (Chan et al., 2022).

A further consideration is the use of eugenol-based root canal sealers and/or temporary materials. This phenolic compound has been reported to have a detrimental effect on the adhesion of resin materials to dentine (Menezes et al., 2008; Schwartz et al., 1998). Resin composites polymerize by the addition of free radicals. However, this process may be inhibited by eugenol (2-methoxy-4-allylphenol) and is capable of penetrating into root canal dentine (Kielbassa et al., 1997). In addition to the use of ultrasonics, and as discussed earlier, air-abrasion may be a useful adjunct to improve the dentine substrate prior to bonding. Furthermore, if eugenol-based root canal sealer and/or temporary materials have been used, polymerization inhibition of any composite resin materials may be reduced by rinsing the dentine with

isopropyl alcohol to sequester any accessible free eugenol (Tian et al., 2021; Figure 1).

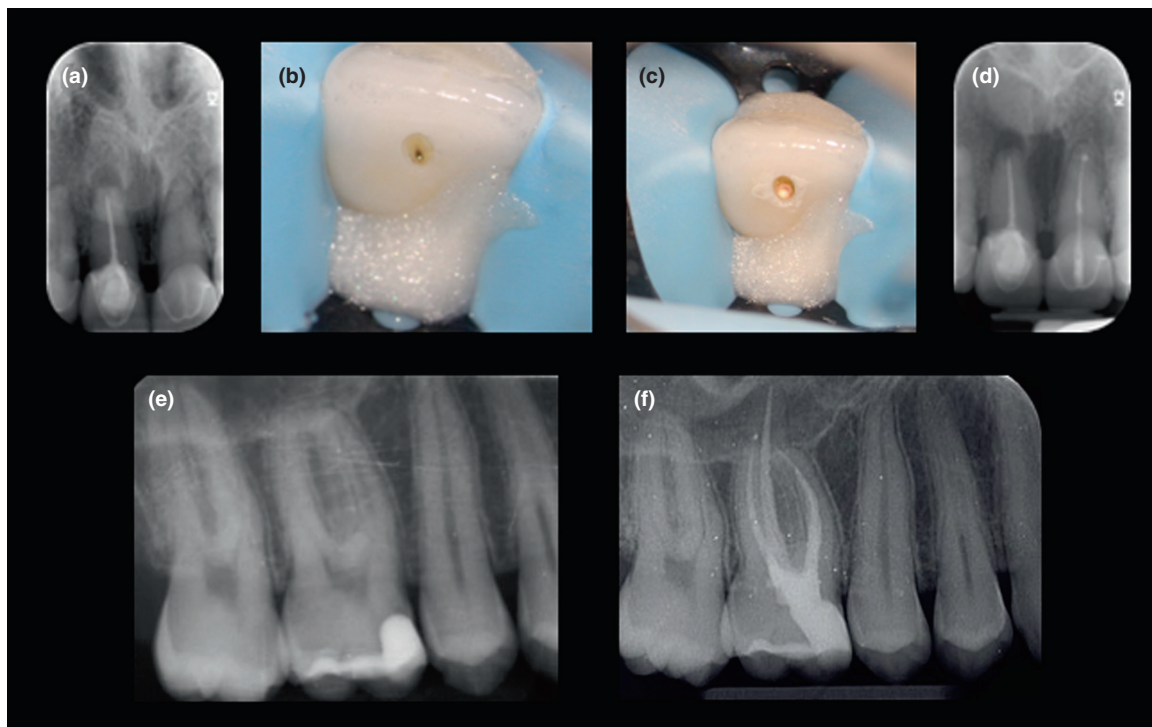
The placement of composite resin materials within the root canal space and the pulp chamber is complicated by the limited access for both restoration placement and light transmission. This may lead to void formation and/or incomplete polymerization of the composite resin materials. Employing a minimally invasive endodontic philosophy will make composite core placement even more challenging (Figure 2). This has been highlighted in studies demonstrating that the percentage of voids observed within the composite restoration is greatest in teeth with minimal access cavities (Pereira et al., 2021; Silva et al., 2020). In these studies, it was also demonstrated that the use of bulk-fill, rather than conventional composites, led to less void formation. The development of bulk-fill materials has been rapid, with the manufacturers of these materials reporting increment depths of up to 10 mm, thereby, facilitating much shorter procedural times.

To permit larger increments of material to be placed, the manufacturers of bulk-fill materials have used several strategies to increase the depth of cure which include reducing filler content (Ilie et al., 2013) and increasing particle size (Ilie et al., 2013) and the addition of photoinitiators. Furthermore, the shrinkage of these materials has been reduced by incorporating shrinkage stress modulators into the compositions (Isufi et al., 2016). For example, SDR (Dentsply Sirona) utilizes a modulator that interacts with the camphorquinone photoinitiator during polymerization to reduce the speed of elasticity modulus development. Although the depth of cure of bulk-fill materials is good, it should also be considered that curing light intensity will diminish with distance. As the base of an endodontic cavity may be several millimetres from the light source, it may be prudent to consider smaller initial increments to offset the increased curing distance (Prati



**FIGURE 1** Pulp chamber preparation following completion of the endodontic treatment and prior to placement of composite resin core. The dentine surface has been cleaned with ultrasonics, after which alcohol has been used to sequester residual eugenol from the pulp chamber. Air-abrasion in combination with aluminium oxide or bioactive glasses may also be used.





**FIGURE 2** The placement of core materials in minimally invasive access cavities presents a challenge (a–d) preoperative periapical radiograph, intra-operative images and post-treatment radiograph of minimally invasive root canal treatment of 21. Predictable light transmission for use of conventional composite resin was not possible during core placement so a dual-cure material was used in this case (e, f) ‘restoratively-driven’ access during root canal treatment of 16. The diligent use of magnification, an elongated delivery tube to place the composite resin (e.g., Accudose; Centrix) permitted placement of the restoration without void formation.

et al., 1999; Rueggeberg et al., 1993). As a result, with the exception of dual-cure compositions, bulk-fill composite materials should not ideally be used in increments exceeding 4–5 mm.

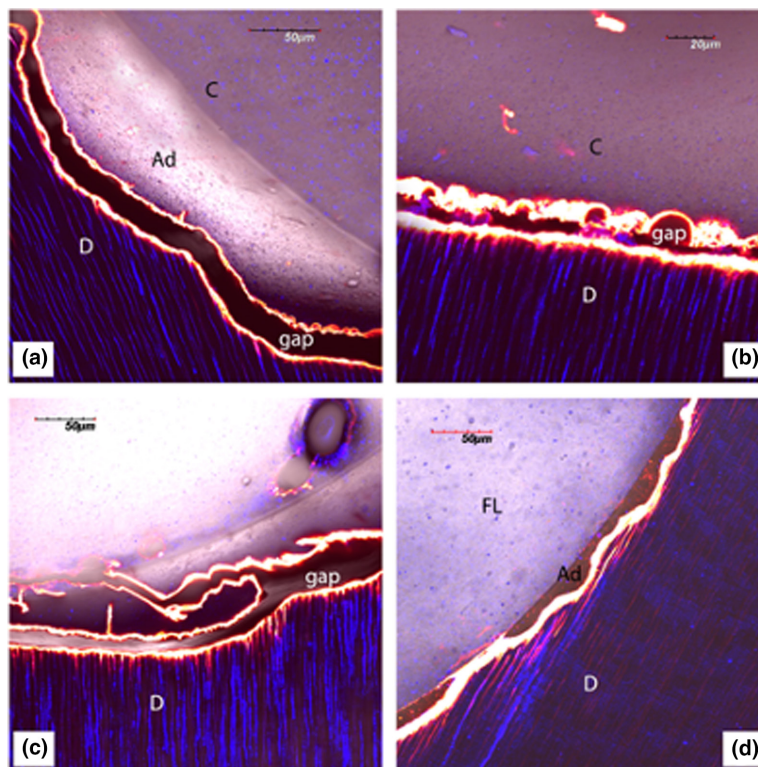
A problem for all composite resin materials at the microscopic level is gap formation at the bonding interface (Benetti et al., 2015). Gaps can occur for several reasons, such as insufficient adhesion at the tooth-restoration interface due to polymerization shrinkage, adhesive resin degradation as a result of insufficient light-curing, fatigue caused by ageing, differences in the thermal expansion coefficient of the tooth substrate and composite resin, or insufficient material placement (Moszner et al., 2008).

Hayashi et al. (2019) demonstrated that light-cured bulk-fill resin composites had varying degrees of gap development and shrinkage within a 4-mm deep cavity (Figure 3). Furthermore, it has been reported that high-viscosity bulk-fill composites are associated with greater gap formation volumes than low-viscosity bulk-fill materials (Oglakci et al., 2019). The authors also demonstrated that using a resin-modified glass-ionomer cement (RMGIC) liner reduced gap formation volume significantly in high-viscosity bulk-fill composites. Although manufacturers claim that bulk-fill composites have less polymerization shrinkage than traditional composites,

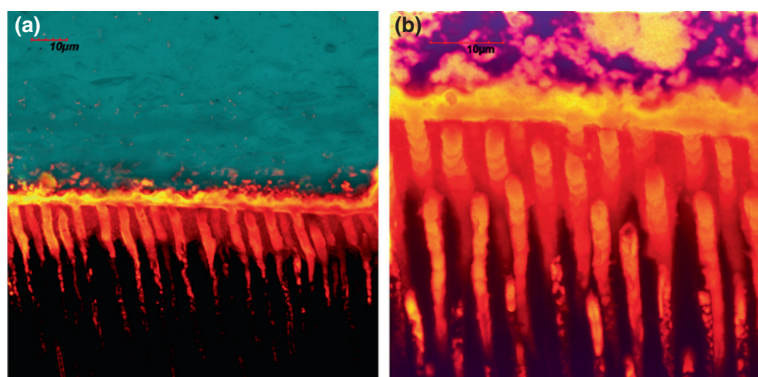
there is insufficient literature on the influence of intermediate lining materials (Alomari et al., 2001).

The use of flowable composites or RMGIC as liners or dentine substitution materials, has been reported to provide a ‘stress-absorption’ effect at the bonding interface (Irie et al., 2002, 2004) and to decrease gap formation, microleakage and deterioration over time (Kakaboura et al., 2007; Sampaio et al., 2011; Figures 3 and 4). Moreover, it has been recently reported that the use of modern ion-releasing materials such as conventional RMGIC or RMGIC-based composite (ACTIVA restorative; Pulpdent) used as dentine replacement materials may preserve the *in vitro* bonding performance of modern universal adhesives bonded to dentine (Sauro et al., 2019; Slimani et al., 2021). However, further studies are required to validate their use.

Practical considerations for the use of bulk-fill materials include the placement and pooling of the adhesive bonding resin. Fine microbrushes (Microbrush X; Young Innovations Europe GmbH) are useful for this purpose, as are paper points, which may also be used to absorb surplus bonding agents. The length of the delivery tip of proprietary composite compules may not be of adequate length to reach the base of the access cavity, increasing the risk of void formation. This may be



**FIGURE 3** Dye-assisted confocal microscopy of resin-dentine interfaces created using different bonding and restorative procedures performed in class 1 cavities subsequent root canal treatment *in vitro*. (a) Single-projection images of the resin-dentine interface created by the application of a bulk-fill composite (Filtek One Bulk-Fill; 3M ESPE AG) following the use of a universal adhesive (Scotchbond Universal; 3M ESPE AG) in self-etching (SE) mode. It is possible to see a clear gap between the dentine (d) and the adhesive/composite (Ad/C) most likely due to polymerization shrinkage, which has caused the debonding in adhesive mode (b). (c) Further images of resin-dentine interface, following conventional composite (Filtek Supreme XTE; 3M ESPE AG) placement with the use of a universal adhesive in SE mode. Once, again it is possible to see a clear gap between the dentine (d) and the adhesive/composite (Ad/C) due to polymerization shrinkage. (d) Single-projection images of resin-dentine interface created by the application of a flowable 'bioactive' restorative composite (ACTIVA Restorative; Pulpdent) following the use of a universal adhesive in SE mode. In this case, gap formation between the dentine (d) and the adhesive/composite (Ad/C) is much less evident. This may be due to the mechanical and compositional characteristics of the material (i.e., resin-modified glass ionomer cement containing modified calcium phosphates), which are proposed to create less stress on the bonding interface, particularly when left undisturbed for a couple of minutes prior to light-curing.



**FIGURE 4** Dye-assisted confocal microscopy of resin-dentine interfaces created using an experimental self-etching adhesive applied on dentine previously air-abraded with bioactive zinc-doped bioglass powder after 3 months of storage in artificial saliva. (a): Single-projection images of resin-dentine interface that was immersed in 0.5 wt% calcium-chelating dye solution 26 (Xylenol Orange; Sigma-Aldrich) after maintaining the specimens for 3 months in artificial saliva (AS). It is possible to observe, especially at higher magnification (b), the presence of a clear calcium-based mineral deposition within the resin-dentine interface and inside the dentine tubules induced by the bioactive glass.

overcome using elongated needle delivery tubes (e.g., Accudose; Centrix); these can either be filled with the desired material or placed over the proprietary compule to provide deeper access.

Despite concerns that relate to composite bonding in general, bulk-fill composite materials should still be considered a good choice for post-endodontic core placement, due to their favourable properties and handling.

## DEEP MARGIN ELEVATION

The occurrence of subgingival proximal margins due to caries or previous restorative procedures is a common clinical challenge encountered during endodontic-restorative procedures. The 'threshold' for deeming a tooth unrestorable varies significantly amongst clinicians. It is critical that the restorability of a tooth is established prior to endodontic treatment to avoid difficulties later in the treatment process. Embedded in convention, there has often been a dissociation between the endodontic and restorative phases of treatment, leading to poor treatment planning decisions, poor asepsis during root canal treatment and suboptimal restoration placement. Moreover, teeth that have undergone root canal treatment may later be deemed unrestorable. However, it is promising to see emerging trends, not only in clinicians increasingly taking holistic 'ownership' of both the endodontic and restorative aspects of treatment but also in the level of difficulty of cases being undertaken. It is the authors' opinion that restorative treatment should be an integral part of the skillset of clinicians undertaking endodontic treatment.

Historically, the management of subgingival restorative margins has involved crown lengthening procedures which comprise surgical osseous and soft tissue repositioning to establish supragingival margins, and to permit definitive restoration without impinging on the biological width. However, these procedures require an additional surgical procedure, time and cost to the patient, and will reduce the bone support of both the treated and neighbouring teeth. Furthermore, the procedure can often be complicated in the interproximal region by a lack of adequate space between the adjacent teeth.

An alternative approach to managing the restoration of deep interproximal margins is the deep margin elevation (DME) or cervical margin relocation concept which was first described by Dietschi and Spreafico (1998). This involves the relocation, or elevation, of the subgingival margin to a more coronal position using direct composite resin. The fundamentals of this procedure rely on optimal rubber dam isolation, the use of appropriate and innovative matrix systems/techniques and an optimal bonding strategy (Magne, 2021). One of the main concerns with

bonding below the cemento-enamel junction is that the marginal seal will be entire with dentine and/or cementum. Achieving these objectives with optimal isolation is a technique-sensitive challenge (Van Meerbeek et al., 2005). It is therefore fundamental to understand the importance of developing the necessary skills in isolation, matrix placement and bonding protocols to optimize outcomes, moreover, when these objectives cannot be fulfilled, surgical crown lengthening may be a valid alternative.

Clinical data relating to the performance of teeth restored with DME techniques are lacking, with a systematic review on the subject highlighting that existing research is almost entirely limited to *in vitro* studies and clinical case reports (Juloski et al., 2018). There are limited clinical studies on the long-term outcomes of DME, and the results should be interpreted with caution due to the lack of data specific to root filled teeth. A study by Bresser et al. (2019) followed 197 indirect restorations (including 45 endodontically treated teeth) with DME up to 12 years, with a mean follow-up of 57.7 months. The cumulative 12-year survival rate was determined to be 95.9%, with the majority of failures due to recurrent caries. However, a significantly higher incidence of tooth and restoration fractures occurred in root filled teeth when compared with those with vital pulps. Further case series have demonstrated excellent survival rates between 5 and 21 years (Dietschi & Spreafico, 2019; Ghezzi et al., 2019), however, the included numbers are small, and therefore, should be interpreted with caution.

A concern regarding the DME technique is the potential violation of the biological width (Broadbent et al., 2006) and the associated risk of periodontal inflammation and attachment loss (Kamin, 1989). Results in relation to the impact of DME on periodontal health demonstrate conflicting results (Ferrari et al., 2018; Sarfati & Tirlet, 2018). Ferrari et al. (2018) assessed the health of the periodontal tissues of 35 posterior teeth restored with either the DME technique or shoulder preparation after 12 months. They found a significantly higher incidence of bleeding on probing in the DME group, and this was most prevalent in teeth where the distance between the cavity margin and the crestal bone was 2 mm or less. However, other authors have reported favourable periodontal responses to DME (Ghezzi et al., 2019; Sarfati & Tirlet, 2018). A further study demonstrated no differences in clinical or histological findings of the periodontal tissues adjacent to the DME when compared with untreated controls (Bertoldi et al., 2020). There is also differing opinion on the acceptable depth of the DME, and specifically, the proximity of the restoration margin to the connective tissue and the crestal bone (Castelo-Baz et al., 2021; Ghezzi et al., 2019; Sarfati & Tirlet, 2018). Proponents of DME have suggested that the technique may be utilized at any depth in relation to



the crestal bone, as long as optimal rubber dam isolation can be achieved (Ghezzi et al., 2019), and that a shorter long junctional epithelial attachment can be maintained without inducing periodontal attachment loss. Intuitively, in cases with deep proximal caries, attachment loss to the base of the carious lesion has already occurred, and where the alternative of surgical crown lengthening will lead to further attachment loss, it appears sensible that this may be a valid technique. However, it is necessary for prospective clinical research to validate the long-term stability of DME in root filled teeth.

Techniques such as DME should be considered necessary skills for those carrying out endodontic-restorative treatment. The ability to isolate and restore deep margins will permit the retention of many previously condemned teeth. By restoring these areas prior to performing the endodontic treatment, several objectives are achieved; these include restorability being established, attainment of optimal isolation during the endodontic treatment and ease of preparation of the definitive restoration. Importantly, the use of DME will also facilitate both the preparation and adhesive luting of indirect restorations with subgingival proximal margins, which otherwise, would need to be restored with conventionally cemented indirect restorations, which in turn require greater tooth reduction (Juloski et al., 2018).

## ALL CERAMIC CROWNS AND ONLAYS

The evolution of all ceramic materials for the provision of indirect restorations has led to their routine use for both root filled teeth, and those with vital pulps. These materials provide huge aesthetic advantages but with little compromise to restoration strength and longevity. Numerous materials have been developed to produce all ceramic restorations; these include conventional or traditional feldspathic porcelain, aluminous porcelain, glass infiltrated alumina, zirconia, glass ceramic, reinforced glass ceramic (leucite and lithium-disilicate) and densely sintered alumina. Unfortunately, there is a sparsity of data, with little available research assessing the performance of all ceramic restorations specifically on root filled teeth (Dioguardi et al., 2021); this should be considered highly relevant to the interpretation of the results of the available studies (Morimoto et al., 2016).

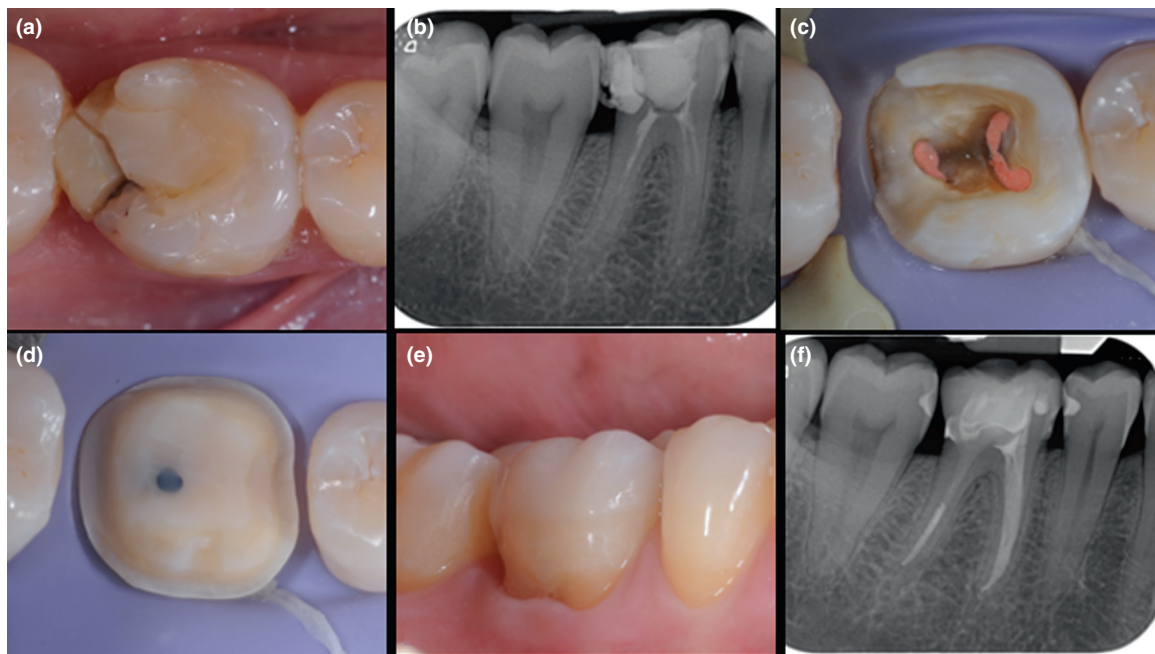
A systematic review evaluating the survival and complication rates of various all ceramic and metal ceramic crown restorations found that they showed comparable survival rates at 5 years (Sailer et al., 2015). A total of 9434 all ceramic and 4663 metal ceramic crowns were included, however, the number of root filled teeth and those with

vital pulps was not specified. It was found that for posterior teeth, densely sintered alumina (Procera; Nobel Biocare, Zürich-Flughafen, Switzerland) and reinforced glass ceramic crowns (IPS Empress, IPS. e.max; Ivoclar Vivadent, Schaan, Liechtenstein; Figure 5) performed similarly to metal ceramic crowns. Glass ceramic (DICOR; Dentsply Sirona) and In Ceram (Vita Zahnfabrik) crowns had lower survival rates when placed on premolar and molar teeth. Posterior all ceramic crowns had more failures than anterior all ceramic crowns. The most common modes of failure for all ceramic crowns collectively were ceramic chipping, framework fractures and loss of vitality (biological failure). The cumulative 5-year survival rates were 95.7%, 96.6%, 94.6% and 96% for metal ceramic, leucite or lithium disilicate reinforced glass ceramics, glass infiltrated alumina and densely sintered/alumina crowns, respectively. The authors concluded that leucite, lithium disilicate reinforced glass ceramic or alumina-based oxide all ceramic crowns could be recommended as an alternative to gold-based metal ceramic crowns for both anterior and posterior teeth. Feldspathic and silica-based ceramics were associated with higher failure rates when used for the restoration of posterior teeth. Furthermore, layered zirconia-based crowns were considered inferior due to loss of retention and fracture of the ceramic veneering. However, in other studies zirconia crowns were shown to have equivocal veneering fractures to other restorations and remain a popular choice with clinicians (Laumbacher et al., 2021; Figure 6).

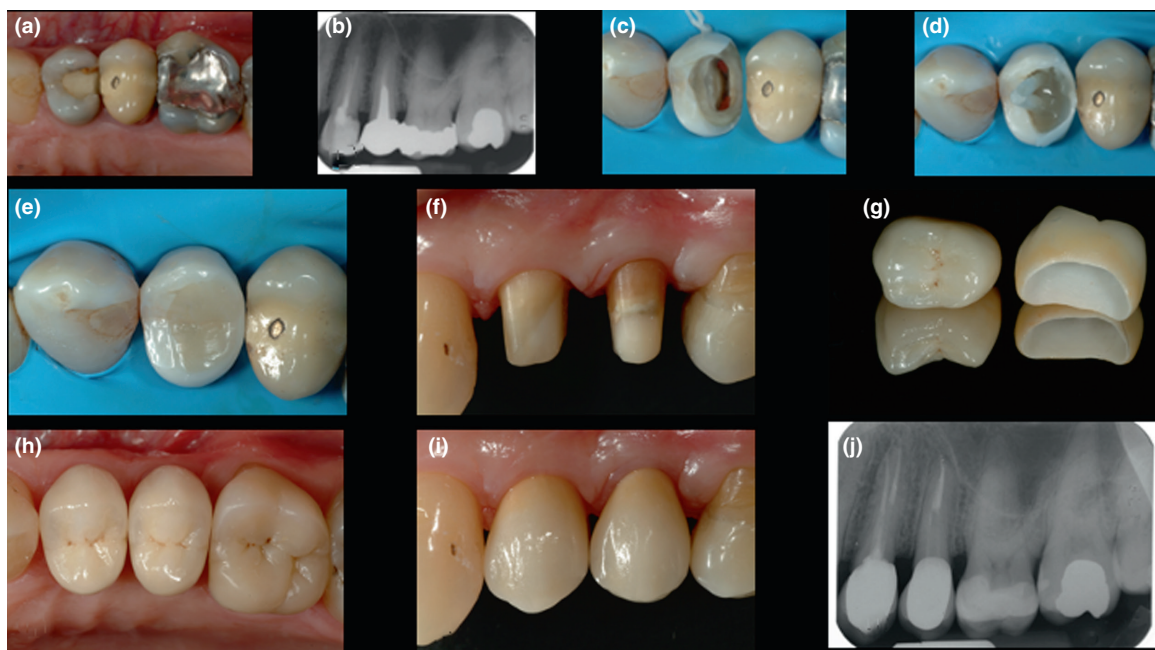
A prospective study assessed the longer-term survival and complication rates for lithium disilicate e.max crowns (Teichmann et al., 2017). The authors assessed the 10-year outcomes for 106 all ceramic crowns and observed relatively low survival and chipping-free rates of 86.1% and 83.4%, respectively. In this study, there were fairly even proportions of restorations that were adhesively and conventionally luted; a rubber dam was used for cementation where possible. It was observed that the 5-year chipping rate was relatively high and it may be that the cementation process is relevant to the biomechanical performance of these restorations.

A key attribute of all ceramic restorations is that they can be adhesively bonded to dentine, although this requires appropriate substrate preparation (D'Arcangelo et al., 2014), and disciplined bonding protocol (Santos Jr et al., 2009) and good moisture control with a rubber dam. Adhesive cementation permits minimal preparation techniques to be employed, such that there is less reliance on creating resistance and retention form within the residual tooth tissue. This facilitates both the preservation of residual tooth structure and the restoration of compromised teeth that may not be possible with conventional preparation techniques and materials. Furthermore, using an





**FIGURE 5** Lithium disilicate ceramic onlay (IPS e.max, Ivoclar Vivadent) placement following root canal retreatment of 36 (a, b) preoperative occlusal view and long-cone periapical radiograph (c) cleaned and prepared dentine surface prior to deep margin elevation and core placement (d) completed core and onlay preparation (e, f) post-treatment occlusal view and postoperative periapical radiograph.



**FIGURE 6** Zirconia crown (Lava; 3M ESPE AG) replacement 25 and crown placement 24 following root canal retreatment (a, b) preoperative occlusal view and long-cone periapical radiograph (c) completed root canal retreatment and dentine surface preparation (d, e) pre-endodontic build up, fibre post and core placement (f) completed full-coverage crown preparations (g) crowns prior to cementation (h, i) finished restorations with postoperative occlusal and buccal views (j) follow-up periapical radiograph at 10 years.

adhesively bonded technique there is less requirement for intra-coronal core retention, and as such, the use of posts. It is for these reasons, that indirect onlay restorations

have increased in popularity in recent times, in line with minimum intervention endodontic-restorative philosophies. However, as discussed earlier in this review, it is

imperative to acknowledge the differences in bonding for root filled teeth when compared with those with vital pulps, due to the ultrastructural differences in the dentine substrate and free water content (Abo-Hamar et al., 2005; Öztürk et al., 2013; Rosa et al., 2015), as well as the effects of the endodontic procedures themselves (Abad-Coronel et al., 2019). The impact of these considerations has not been determined in clinical studies.

There is a considerable lack of data relating to the performance of all ceramic onlays, rather than full coverage crowns, on root filled teeth. However, Ferrari et al. (2019) carried out a randomized clinical trial, evaluating the survival of lithium-disilicate onlays on root filled premolar and molar teeth with a 3 year follow-up period. The parameters of the onlay preparations were standardized by the authors with occlusal reduction limited to 1.0–1.5 mm. Restoration and tooth survival rates of 93.3% for premolars, and up to 100% for molars with 50% or more coronal residual tooth structure (after preparation) were demonstrated. There were no significant differences observed in relation to tooth type (premolars or molars) or fibre post placement, although the failure risk was slightly higher for premolars. Despite the prospective and randomized study design, the limitations of the relatively short observation period and the exclusion of patients with heavy occlusal contacts and/or evidence of parafunctional habits should be taken into consideration.

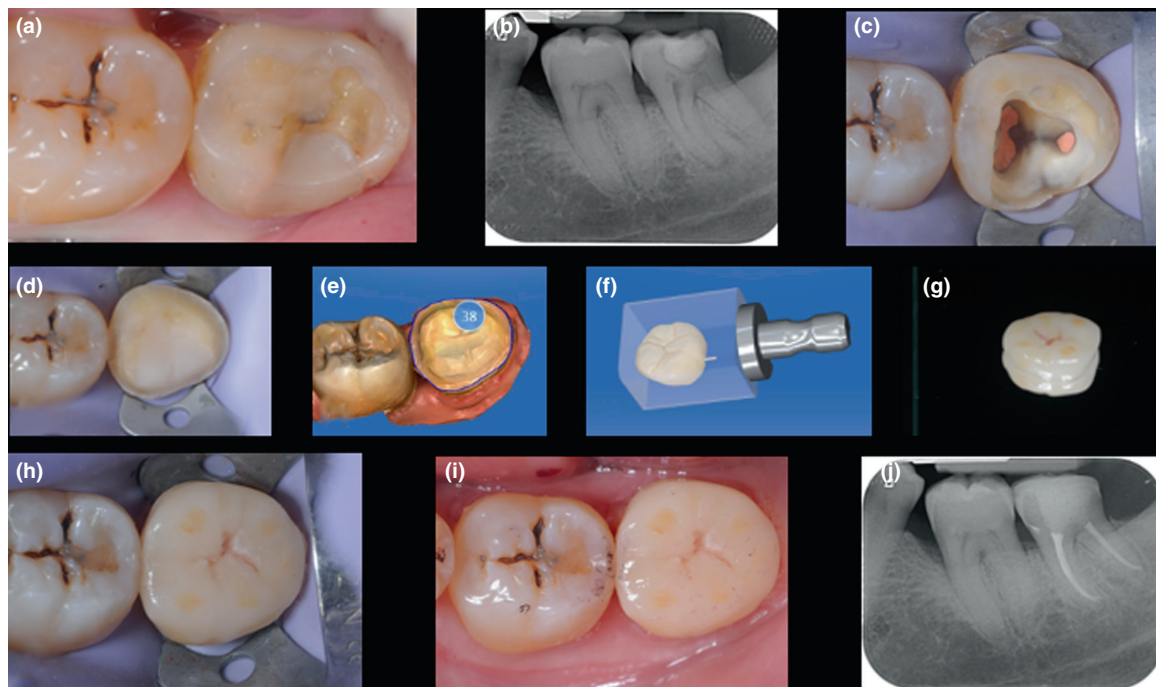
An observational study carried out by a single operator in private practice assessed the long-term survival of 2392 pressed acid-etched e.max lithium disilicate glass ceramic complete and partial coverage restorations in posterior teeth (Malament et al., 2021). Of these restorations, 1782 were full-coverage crowns, whilst 610 were onlay designs. All restorations were etched with hydrofluoric acid, and then silanated, at the time of cementation. The estimated cumulative survival at 16.9 years for all restorations was 96.49%, with no significant differences observed between the full coverage crowns and onlays. Unfortunately, the authors do not provide any information on the numbers of root filled or those with vital pulps included in the study. However, the number of restorations included, as well as the relatively long follow-up is useful for evaluating patient-centered outcomes. Interestingly, there was no difference in survival when the restorations had a thickness of less than 1 mm. Other studies have suggested that lithium disilicate ceramic onlays may have adequate fracture resistance in thicknesses of 0.5–1.0 mm (Guess et al., 2013). This is an important observation, which requires further investigation to ascertain whether more conservative preparations may be considered to maximize the preservation of residual tooth structure. Such minimal preparations would also facilitate the possibility of greater enamel bonding, particularly when used in conjunction

with a minimally invasive access cavity preparation concept. It may be argued that for such restorations, the additive value of improved bonding to the residual tooth structure achieved by retaining occlusal enamel, may in itself, be justification for a minimally invasive endodontic-restorative philosophy.

## CAD-CAM RESTORATIONS

CAD-CAM cuspal coverage restorations have significant potential to expedite the restoration of root filled teeth through same-visit chairside restoration, however to date, evidence is lacking as to whether CAD-CAM restoration *per se* improves treatment outcomes (Carvalho et al., 2018). As is the case for all indirect restorations, the available data does not specifically detail the performance of CAD-CAM restorations on root filled teeth. Thus, there is a need for prospective well-designed clinical trials to answer key questions about the relative outcomes and optimal protocol for the CAD-CAM restoration of root filled teeth. A systematic review followed 2916 single-unit CAD-CAM indirect restorations for a mean period of 7.0 years (Alves de Carvalho et al., 2018). Of the included restorations, 1826 were either onlays or inlays, with an estimated 5-year survival rate of 90.9%.

There are three key outstanding questions regarding the adoption of CAD-CAM technology. First, adopting a CAD-CAM-based workflow can lead to bias amongst clinicians towards prescribing indirect rather than direct restorations, given the relatively high financial outlay involved in purchasing the scanning and/or milling hardware. This influence on decision-making may not always lead to superior outcomes for root filled teeth. Mannocci et al. (2002) demonstrated that post-endodontic fibre post-retained composite restorations were as successful at 3 year in class II premolar cavities, as those restored with full coverage crowns. However, in many cases, an indirect restoration with cuspal coverage provides better outcomes (Pratt et al., 2016). The second question is regarding timing, as the key advantage to being gained from CAD-CAM is that restorations can be completed expediently after endodontic treatment, perhaps even at the same visit as the root canal treatment (Figure 7). Whilst evidence is lacking on single-visit endodontic-restorative treatment there is retrospective data showing that timely indirect restoration provides better outcomes; Pratt et al. (2016) reported that teeth that were restored with crowns more than 4 months after root canal treatment were almost 3 times more likely to get extracted compared when compared with teeth that received crowns within 4 months of root canal treatment. The third key question is regarding the material choice for CAD-CAM restorations, namely



**FIGURE 7** Lithium disilicate onlay (IPS e.max CAD) placement following root canal treatment of symptomatic 38 (a, b) preoperative occlusal view and long-cone periapical radiograph (c) completed root canal treatment and dentine surface preparation (d) completed core and onlay preparation (e–g) the onlay is fabricated using computer-assisted design and manufacturing (CAD-CAM) (h, i) finished restoration with postoperative occlusal view and follow-up periapical radiograph (j).

ceramic versus hybrid composite/ceramic. Hybrid composite is becoming increasingly popular due to its optimal machining properties, however, prospective data on CAD-CAM hybrid ceramic restorations for root filled teeth are lacking. The primary mode of failure of CAD/CAM restorations is fracture; reasons for fracture of ceramic restorations may include low flexural strength of the material, subsurface flaws of CAD-CAM ceramics produced during machining, insufficient polishing of the occlusal surfaces after adjustment and parafunctional habits, with equivalent rates being shown for hybrid ceramics in early data (Lu et al., 2018). However, a key issue with CAD-CAM hybrid ceramics is their failure in full crown scenarios, due to the excessive hoop stresses that occur, and therefore, many manufacturers limit their indications for partial coverage restorations and contra-indicate their use for full coverage crowns (Bomfim et al., 2020).

## INDIRECT COMPOSITE RESIN RESTORATIONS

Resin composite materials for indirect restoration consist of a polymeric matrix reinforced by fillers which may be inorganic (ceramic, glass or glass ceramic), organic or composite (Ferracane, 2011). Unfortunately, the original resin blocks suffered from increased resin wear, loss of

surface polish and colour instability (Douglas, 2000). In recent times, the new formulations of so-called 'resin-matrix ceramics' for CAD-CAM combine the advantageous properties of ceramics, such as colour stability and durability, with those of composite resin, such as low abrasiveness and improved flexural properties. These materials have been sub-classified as polymer-infiltrated ceramic networks (e.g., VITA Enamic; VITA Zahnfabrik) or resin-based composites (e.g., Cerasmart; GC Corporation; Spitznagel et al., 2018). Despite the evolution of these materials, concerns remain as to their long-term wear and fracture resistance, as well as marginal discoloration (Albelasy et al., 2020; Tekçe et al., 2016). In particular, there is concern regarding their strength in areas of high functional and nonfunctional stresses (Morimoto et al., 2016). However, significant advantages of these resin materials are the ease of fabrication and the ability to service the restorations intra-orally.

The long-term survival of indirect composite restorations has not been evaluated; a recent systematic review has highlighted the need for longer-term prospective research (Fathy et al., 2022). The success and survival of 103 CAD-CAM adhesively bonded polymer-infiltrated ceramic network posterior onlays and inlays were prospectively followed for 3 years (Spitznagel et al., 2018). The authors reported a survival rate of 95.6% and a success rate of 82.4% for onlay restorations at the end of



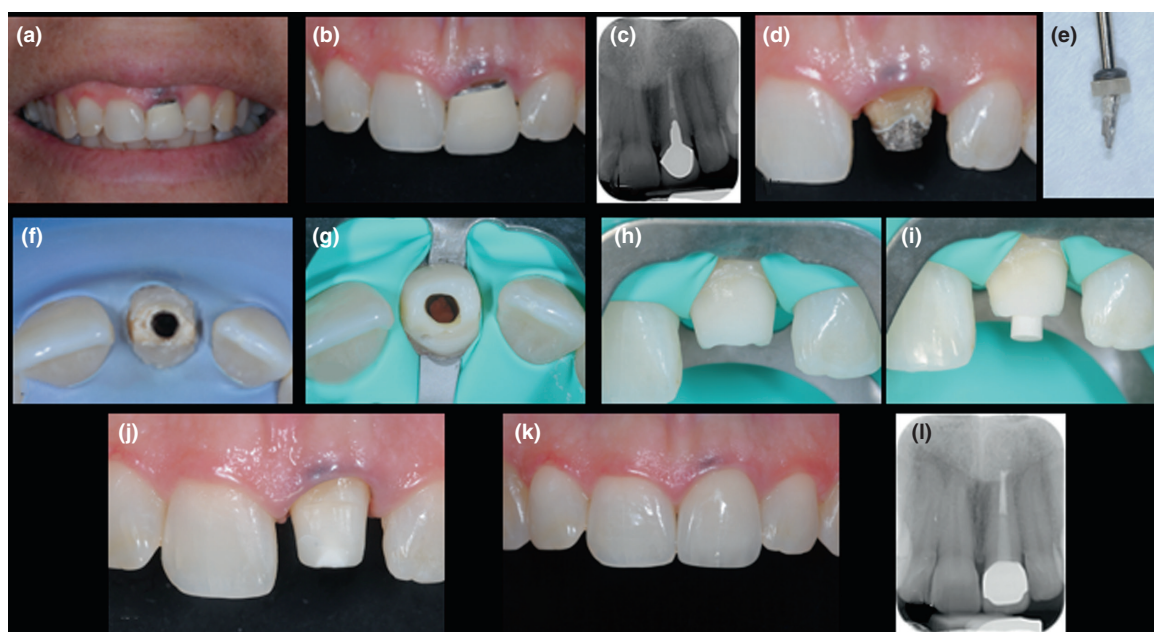
the follow-up period. The main complications observed were deterioration in marginal adaptation and colour, together with increased surface roughness; the majority of the teeth in this study were those with vital pulps. The medium-term survival of indirect composite resin onlays placed on root filled teeth has been retrospectively assessed by Chrepa et al. (2014). A total of 189 restorations (31 premolars and 159 molars) were evaluated over a median follow-up time of 37 months. Restoration survival was reported to be 96.8% at the end of the follow-up period. The findings of this study appeared to show a lower complication rate in respect of marginal adaptation and discolouration. Overall, these studies demonstrate excellent medium-term outcomes, which are equivocal, but the time-dependent trends of marginal breakdown are a concern for long-term restoration stability and as such, further evaluation is required.

## POSTS

Root canal posts primarily provide retention for the coronal restoration of substantially compromised root filled teeth. Even with the improvement of adhesive luting techniques, the contribution to the stability of the root by adhesively placed root canal posts remains questionable and is predominantly considered for the restoration of weakened traumatized maxillary anterior teeth with thin dentinal walls (Krastl et al., 2021; Ree & Schwartz, 2017). The amount of residual coronal tooth

structure and the tooth type are key factors in determining the need for a post. Post placement is recommended for root filled teeth with no remaining coronal walls (Naumann et al., 2018) and those with one remaining wall (Ferrari et al., 2022). Posterior teeth with adequate depth and shape within the pulp chamber for core retention can be reliably restored without posts (; Ferrari et al., 2019). Biomechanical considerations lead to the assumption that posts are more frequently needed for maxillary anterior teeth due to the higher risk of mechanical failure in this region (Schmitter et al., 2011; Torbjörner & Fransson, 2004). However, a recent meta-analysis revealed similar failure rates with short- to medium-term follow-up of post- and core restorations in anterior and posterior teeth (Garcia et al., 2019).

Avoiding excessive post space preparation to maximize the preservation of dentine is a key principle in modern post-endodontic restoration. Adapting the post to the existing parameters of the shaped root canal rather than creating a post space to accommodate a specific post is preferable, as extensive post space preparation affects the stability of the restored root filled tooth (Lang et al., 2006). In teeth with round root canals, the use of prefabricated, conically shaped and adhesively luted root canal posts, ideally without further post space preparation, is recommended (Figure 8). Up to now, there is no clinical evidence that the post material's rigidity affects the survival of root filled teeth or the occurrence of root fractures (Figueiredo et al., 2015; Martins et al., 2021). Outcome data for post-retained restorations varies with respect to



**FIGURE 8** Zirconia crown (Lava; 3M ESPE AG) replacement following root canal retreatment 21 (a–c) preoperative buccal views and long-cone periapical radiograph (d–f) removal of cast post and root canal retreatment (h–j) internal bleaching followed by fibre post, composite core placement and thereafter, crown preparation (k) completed crown cementation (l) radiographic follow-up at 3 years.



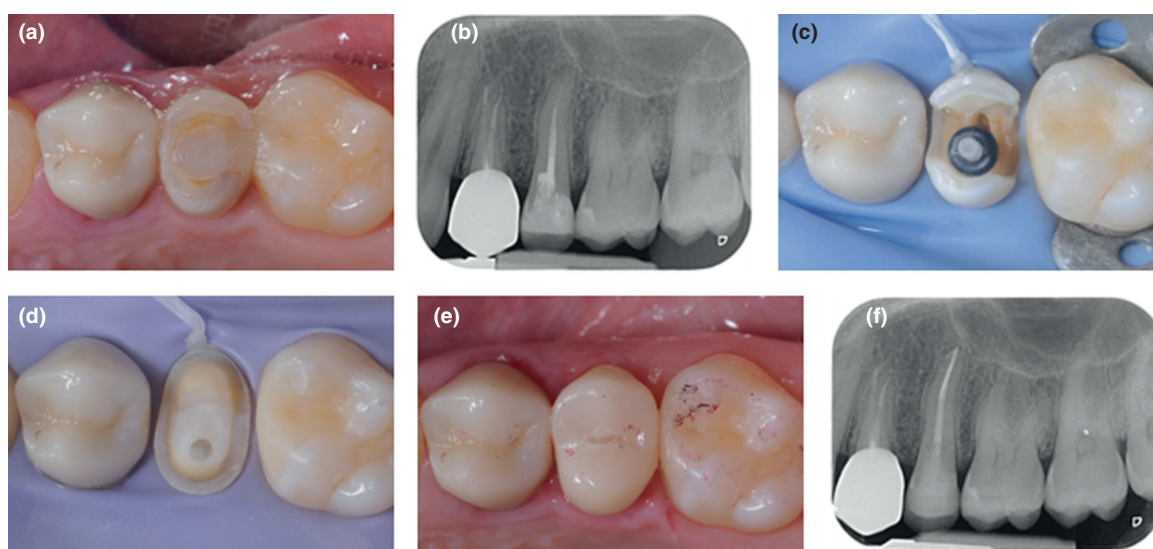
the amount of residual tooth structure, preparation of a ferrule design and final restoration (Bhuva et al., 2021), showing approximately 90% survival in the medium term (5–7 years) for teeth restored with fibre posts (Wang et al., 2019; Figure 9). However, one randomized clinical trial demonstrated a significant drop in the survival rate after 8 years leading to a cumulative survival probability of 58.7% for teeth restored with fibre posts and 74.2% for titanium posts after 11 years (Naumann et al., 2017).

Adaption of posts to the anatomy of unprepared, irregular shaped or flattened root canals can be achieved with customized and relined fibre posts or the use of fibre bundles. In the case of customized formed fibre posts, glass fibres are embedded in an interpenetrating polymer network (IPN) of PMMA and Bis-GMA (everStick; Vallittu, 2009); such posts reveal higher fracture resistance than prefabricated solid fibre posts *in vitro* (Fokkinga et al., 2004). However, ageing affected bond strengths and surface nanohardness of the adhesive layer between composite and the polymerized fibre-reinforced composite structure, indicating possible degradation effects depending on the monomer system used (Khan et al., 2018; Khan et al., 2019). Clinical data from teeth treated with such custom-shaped posts are inconclusive. One study demonstrated lower success rates for customized fibre posts compared to solid fibre posts following 6 years of clinical service (Ferrari et al., 2012), whilst a further study showed similar 5-year survival rates for cast gold posts and cores, solid fibre posts and customized fibre posts (Fokkinga et al., 2007).

The relining of fibre posts with resin composite modification using the root canal space has been suggested to

facilitate the adaption of prefabricated posts in cases with nonuniform or greatly enlarged root canals (Grandini et al., 2003). Poor adaption of the post to the root canal parameters results in both a greater and less homogeneous thickness of the resin cement layer, increasing the risk of void inclusion, irregular contraction during polymerization and possible post dislodgement. Furthermore, a high resin cement thickness increases stress concentration inside the resin cement and decreased bond strength values *in vitro* (Dal Piva et al., 2017; Dal Piva et al., 2018), whilst relining of fibre posts results in increased bond strength in laboratory tests (de Souza et al., 2016; Farina et al., 2016; Macedo et al., 2010). However, data for the fracture resistance of root filled teeth restored with relined posts, remains inconclusive, even *in vitro* (Silva, Cabral, et al., 2021a; Silva, Versiani, et al., 2021b) and clinical data is still lacking. Furthermore, fibre post relining increases the clinical time needed for post-endodontic restoration and creates another interface between the composite relining and root canal dentine.

Fibre bundles consist of clusters of 4–12 flexible prefabricated glass fibres, each with a diameter of 0.3 mm. This design allows the bundle to be inserted after the adhesive and composite have been applied, resulting in a flexible approach to evenly distribute the bundle across the canal, especially in the case of irregularly shaped anatomy. Previous studies demonstrated that bundled fibre posts exhibited intracanal adhesion as well as fracture resistance comparable to that measured for solid fibre posts (Bitter et al., 2019; Kul et al., 2020; Sturm et al., 2021) but with more homogeneous stress distribution (Yanik & Turker, 2022). Root filled maxillary central incisors with



**FIGURE 9** Lithium disilicate only (IPS e.max CAD) placement following root canal retreatment of 25 (a, b) preoperative occlusal view and long-cone periapical radiograph (c) fibre post prior to cementation and core placement (d) completed core and onlay preparation with distal deep margin elevation (e, f) final CAD-CAM restoration with postoperative occlusal view and follow-up periapical radiograph.

mesial and distal class III cavities restored with direct composite demonstrated comparable fracture resistance to those restored with solid and bundled glass fibre posts, and increased resistance compared to those restored without posts (Comba et al., 2021). In the case of weakened and flared root canals in immature teeth a combination of adhesively placed solid and bundled fibre posts contributed to fracture strength and stress distribution *in vitro* (Santos et al., 2022).

To date, no evidence exists that a specific post material or the rigidity of the post affects the outcome of post-retained restorations. Posts mainly provide retention for the coronal restoration and are therefore indicated in teeth with extensive loss of coronal tooth structure. Substance preservation plays a key role in the survival probability of root filled teeth, and therefore, extensive post space preparation should be avoided, and the posts should be adapted to the shaped root canal space rather than the other way round. In cases of irregular-shaped or extremely flared root canals adhesively placed customized fibre posts, as well as fibre bundles, can be used as an alternative option.

## ENDOCROWNS

Restorations that contribute to the structural integrity of root filled teeth, and preserve as much tooth structure as possible, improve long-term prognosis. Preparation of a 'ferrule design' is of utmost importance to prevent tooth or root fracture of post-endodontic crown restorations in severely compromised teeth (Juloski et al., 2012; Magne et al., 2017; Naumann et al., 2018). Ideally, this requires a minimum of 4–5 mm of supracrestal tooth tissue to provide a 2 mm ferrule preparation and secure a biological width of 2–3 mm, however, this is clinically not always available. Consequently, root filled teeth exhibiting significant tooth structure loss may require surgical crown lengthening or orthodontic extrusion. Surgical crown lengthening can critically alter the crown-to-root ratio, which contributes to stress and strain concentrations within the root dentine, and subsequently may negatively affect the fracture load behaviour and long-term reliability of the post-endodontic restoration (Avila et al., 2009; Gegauff, 2000; Tada et al., 2015). Therefore, endocrowns are a conservative approach for the restoration of root filled teeth without the need for post-space or ferrule design preparation.

Recent systematic reviews and meta-analyses demonstrate high success rates for endocrowns in molars (72–99%) and in premolars (68–100%) with a follow-up range of 3–19 years, revealing no significant difference between tooth types (Thomas et al., 2020). Comparable survival and success rates for endocrowns and conventional

post-retained crown restorations were shown (Al-Dabbagh, 2021), indicating that endocrowns are a reliable treatment option for compromised root filled molars and premolars. Recommendations for the preparation design include a depth of 3 mm for the central retention cavity with a divergence angle of 6–12° for more homogenous stress distribution (Abtahi et al., 2022; Tribst et al., 2021). The cervical margin width should be at least 2 mm, and prepared flat or slightly bevelled (Zheng et al., 2022).

Different materials have been used for the fabrication of endocrowns using CAD-CAM technology. Lithium disilicate ceramic has been recommended frequently for this purpose, due to its favourable physical properties, good aesthetics and its predictable bonding to tooth tissue. However, hybrid ceramics or CAD-CAM resin composites have a lower elastic modulus which is closer to that of dentine. Such hybrid materials could act as a stress absorber and reduce stress peaks within the root-dentine and the restoration-tooth interfaces, under clinical loads (Gresnigt et al., 2016; Rocca et al., 2016). A recent systematic review of *in vitro* studies demonstrated that CAD-CAM resin composites had similar, increased, fracture resistance when compared to lithium disilicate ceramics, with less catastrophic failures also (Beji Vijayakumar et al., 2021). However, finite element analyses revealed stress concentrations proportional to the elastic modulus of the restoration material, with a higher stress concentration within the lithium disilicate ceramic, and less stress reaching the cement layer and residual tooth structure (He et al., 2021). Conversely, CAD-CAM resin composites demonstrated a more uniform stress distribution but higher stress concentration inside the cement layer and surrounding tooth structure, which may lead to debonding (Yildirim et al., 2021). Fractographic analyses of clinically failed composite resin-based endocrowns revealed a break-up of the composite structure with reduced mechanical properties due to degradation processes and crack propagation leading to fracture events. These were mainly observed through the central occlusal groove, indicating less fatigue resistance of these restorations (Saratti et al., 2021). Due to the lack of long-term controlled clinical studies, lithium disilicate ceramics are currently the material of choice for endocrowns, primarily due to its reliable bonding to the resin cement and its long-term stability (El-Ma'aita et al., 2022).

Endocrowns present a viable treatment option for root filled premolars and molars. These restorations permit the preservation of residual tooth structure, as post space preparation and placement, as well as preparation of a ferrule design, are avoided. Adequate adhesive luting, including proper isolation of the prepared tooth, are a prerequisite for this treatment alternative and its long-term survival probability. Based on the currently available

literature, lithium-disilicate ceramics appear to be the material of choice for endocrown restorations.

## CONCLUSIONS

The evidence-base for post-endodontic restorative decision-making remains complex and unclear. However, the interdependency of endodontic and restorative treatment is clearly established. Clinicians should consider both aspects of treatment equally, to give their patients the best outcomes. Moreover, engrained in the initial treatment planning process should be the final restorative plan for the tooth being treated.

As well as appreciating the importance of residual tooth structure, it is imperative to understand the relevance of tooth location and the number of proximal contacts on the survival of root filled teeth, and thereby, plan the post-endodontic restoration appropriately. Therefore, it is also important to consider the prognosis of the teeth adjacent to that being treated, as their premature loss may influence its survival. It is fundamentally important for clinicians who undertake endodontic treatment to have a good understanding of how occlusal factors, and parafunctional stresses, may affect prognosis. The occlusion of each patient should be assessed prior to embarking on treatment, to identify and manage possible contributory factors, particularly in the case of cracked teeth.

The available evidence indicates that for posterior teeth, contemporary indirect techniques such as all ceramic crowns, onlays and endocrowns are as predictable as metal ceramic crowns. However, prospective studies with longer follow-up periods are required to validate the performance of these restorations. In addition, particularly as dental materials evolve, the minimum required thickness of ceramics and composite materials, as well as cementation protocols require clarification for clinicians to provide the best outcomes.

The validity of minimal intervention and/or biomimetic endodontic-restorative concepts and techniques has not been proven in clinical studies. However, this does not mean that these concepts should be dismissed. Indeed, surrogate measures from existing research suggest that there is a need for randomized clinical trials evaluating the long-term survival of root filled teeth restored with these techniques. Clearly, how these are carried out, remains a challenge. The use of digital scanning offers an exciting opportunity for accurate volumetric assessment of residual tooth structure which could be utilized to offer tangible qualitative data for survival analysis which can then be conveyed to patients to facilitate decision making.

## AUTHOR CONTRIBUTIONS

All authors contributed to conceptualization, methodology, data curation, writing, review and editing.

## ETHICS STATEMENT

None.

## CONFLICT OF INTEREST

The authors have stated explicitly that there are no conflicts of interest in connection with this article.

## DATA AVAILABILITY STATEMENT

None

## ORCID

Bhavin Bhuvra  <https://orcid.org/0000-0002-5413-9134>

## REFERENCES

- Abad-Coronel, C., Naranjo, B. & Valdiviezo, P. (2019) Adhesive systems used in indirect restorations cementation: review of the literature. *Dentistry Journal*, 7, 71.
- Abo-Hamar, S.E., Hiller, K.A., Jung, H., Federlin, M., Friedl, K.H. & Schmalz, G. (2005) Bond strength of a new universal self-adhesive resin luting cement to dentin and enamel. *Clinical Oral Investigations*, 9, 161–167.
- Abtahi, S., Alikhasi, M. & Siadat, H. (2022) Biomechanical behavior of endocrown restorations with different cavity design and CAD-CAM materials under a static and vertical load: a finite element analysis. *Journal of Prosthetic Dentistry*, 127, 600.e1–600.e8. <https://doi.org/10.1016/j.prosdent.2021.11.027>
- Albelasy, E.H., Hamama, H.H., Tsoi, J.K.H. & Mahmoud, S.H. (2020) Fracture resistance of CAD/CAM occlusal veneers: a systematic review of laboratory studies. *Journal of the Mechanical Behavior of Biomedical Materials*, 110, 103948.
- Al-Dabbagh, R.A. (2021) Survival and success of endocrowns: a systematic review and meta-analysis. *Journal of Prosthetic Dentistry*, 125, 415.e1–415.e9.
- Alley, B.S., Kitchens, G.G., Alley, L.W. & Eleazer, P.D. (2004) A comparison of survival of teeth following endodontic treatment performed by general dentists or by specialists. *Oral Surgery, Oral Medicine, Oral Pathology, Oral Radiology and Endodontology*, 98, 115–118.
- Al-Nuaimi, N., Patel, S., Austin, R.S. & Mannocci, F. (2017) A prospective study assessing the effect of coronal tooth structure loss on the outcome of root canal retreatment. *International Endodontic Journal*, 50, 1143–1157.
- Al-Nuaimi, N., Ciapryna, S., Chia, M., Patel, S. & Mannocci, F. (2020) A prospective study on the effect of coronal tooth structure loss on the 4-year clinical survival of root canal retreated teeth, and retrospective validation of the dental practicality index. *International Endodontic Journal*, 53, 1040–1049.
- Alomari, Q.D., Reinhardt, J.W. & Boyer, D.B. (2001) Effect of liners on cusp deflection and gap formation in composite restorations. *Operative Dentistry*, 26, 406–411.
- Alves de Carvalho, I.F., Marques, S., Araújo, F.M., Azevedo, L.F., Donato, H. & Correia, A. (2018) Clinical performance of CAD/CAM tooth-supported ceramic restorations: a systematic



- review. *The International Journal of Periodontics & Restorative Dentistry*, 38, e68–e78.
- Aquilino, S.A. & Caplan, D.J. (2002) Relationship between crown placement and the survival of endodontically treated teeth. *Journal of Prosthetic Dentistry*, 87, 256–263.
- Arola, D. & Reprogl, R.K. (2005) Effects of aging on the mechanical behavior of human dentin. *Biomaterials*, 26, 4051–4061.
- Avila, G., Galindo-Moreno, P., Soehren, S., Misch, C.E., Morelli, T. & Wang, H.L. (2009) A novel decision-making process for tooth retention or extraction. *Journal of Periodontology*, 80, 476–491.
- Ayad, M.F., Maghrabi, A.A., Saif, R.E. & García-Godoy, F. (2011) Influence of tooth preparation burs on the roughness and bond strength of adhesives to human dentin surfaces. *American Journal of Dentistry*, 24, 176–182.
- Banerjee, A. (2013) Minimal intervention dentistry: part 7, minimally invasive operative caries management: rationale and techniques. *British Dental Journal*, 214, 107–111.
- Bauer, J., Silva E Silva, A., Carvalho, E.M., PVC, F., Carvalho, C.N., Manso, A.P. et al. (2019) Dentin pretreatment with 45S5 and niobophosphate bioactive glass: effects on pH, antibacterial, mechanical properties of the interface and microtensile bond strength. *Journal of the Mechanical Behavior of Biomedical Materials*, 90, 374–380.
- Beji Vijayakumar, J., Varadan, P., Balaji, L., Rajan, M., Kalaiselvam, R., Saeralathan, S. et al. (2021) Fracture resistance of resin based and lithium disilicate endocrowns. Which is better? – a systematic review of in-vitro studies. *Biomaterial Investigations in Dentistry*, 8, 104–111.
- Benetti, A.R., Havndrup-Pedersen, C., Honoré, D., Pedersen, M.K. & Pallesen, U. (2015) Bulk-fill resin composites: polymerisation contraction, depth of cure, and gap formation. *Operative Dentistry*, 40, 190–200.
- Bertoldi, C., Monari, E., Cortellini, P., Generali, L., Lucchi, A., Spinato, S. et al. (2020) Clinical and histological reaction of periodontal tissues to subgingival resin composite restorations. *Clinical Oral Investigations*, 24, 1001–1011.
- Bhuva, B., Giovarruscio, M., Rahim, N., Bitter, K. & Mannocci, F. (2021) The restoration of root filled teeth: a review of the clinical literature. *International Endodontic Journal*, 54, 509–535.
- Bitter, K., Falcon, L., Prates Soares, A., Sturm, R., von Stein-Lausnitz, M. & Sterzenbach, G. (2019) Effect of application mode on bond strength of adhesively luted glass-fiber bundles inside the root canal. *Journal of Adhesive Dentistry*, 21, 517–524.
- Bomfim, D.I., Rahim, N.M. & Austin, R.S. (2020) Biomechanical planning for minimally invasive indirect restorations. *British Dental Journal*, 229, 425–429.
- Bresser, R.A., Gerdolle, D., van den Heijkant, I.A., Sluiter-Pouwels, L.M., Cune, M.S. & Gresnigt, M.M. (2019) Up to 12 years clinical evaluation of 197 partial indirect restorations with deep margin elevation in the posterior region. *Journal of Dentistry*, 91, 103227.
- Broadbent, J.M., Williams, K.B., Thomson, W.M. & Williams, S.M. (2006) Dental restorations: a risk factor for periodontal attachment loss? *Journal of Clinical Periodontology*, 33, 803–810.
- Cagidiaco, M.C., Radovic, I., Simonetti, M., Tay, F. & Ferrari, M. (2007) Clinical performance of fibre post restorations in endodontically treated teeth: 2-year results. *International Journal of Prosthodontics*, 20, 293–298.
- Cagidiaco, M.C., García-Godoy, F., Vichi, A., Grandini, S., Goracci, C. & Ferrari, M. (2008) Placement of fibre prefabricated or custom made posts affects the 3-year survival of endodontically treated premolars. *American Journal of Dentistry*, 21, 179–184.
- Caplan, D.J. & Weintraub, J.A. (1997) Factors related to loss of root canal filled teeth. *Journal of Public Health Dentistry*, 57, 31–39.
- Caplan, D.J., Kolker, J., Rivera, E.M. & Walton, R.E. (2002) Relationship between number of proximal contacts and survival of root canal treated teeth. *International Endodontic Journal*, 35, 193–199.
- Carrilho, M.R., Geraldini, S., Tay, F., de Goes, M.F., Carvalho, R.M., Tjäderhane, L. et al. (2007) In vivo preservation of the hybrid layer by chlorhexidine. *Journal of Dental Research*, 86, 529–533.
- Carvalho, R.M., Pereira, J.C., Yoshiyama, M. & Pashley, D.H. (1996) A review of polymerization contraction: the influence of stress development versus stress relief. *Operative Dentistry*, 21(1), 17–24.
- Carvalho, M.A., Lazari, P.C., Gresnigt, M., Del Bel Cury, A.A. & Magne, P. (2018) Current options concerning the endodontically-treated teeth restoration with the adhesive approach. *Brazilian Oral Research*, 32, e74.
- Castellan, C.S., Bedran-Russo, A.K., Karol, S. & Pereira, P.N. (2011) Long-term stability of dentin matrix following treatment with various natural collagen cross-linkers. *Journal of the Mechanical Behavior of Biomedical Materials*, 4, 1343–1350.
- Castelo-Baz, P., Argibay-Lorenzo, O., Muñoz, F., Martín-Biedma, B., Darriba, I.L., Miguéns-Vila, R. et al. (2021) Periodontal response to a tricalcium silicate material or resin composite placed in close contact to the supracrestal tissue attachment: a histomorphometric comparative study. *Clinical Oral Investigations*, 25, 5743–5753.
- Chan, B.P., Hui, T.Y., Chan, O.C. et al. (2007) Photochemical cross-linking for collagen-based scaffolds: a study on optical properties, mechanical properties, stability, and hemocompatibility. *Tissue Engineering*, 13, 73–85.
- Chan, M.Y.C., Cheung, V., Lee, A.H.C. & Zhang, C. (2022) A literature review of minimally invasive endodontic access cavities – past, present and future. *European Endodontic Journal*, 7, 1–10.
- Chrepa, V., Konstantinidis, I., Kotsakis, G.A. & Mitsias, M.E. (2014) The survival of indirect composite resin onlays for the restoration of root filled teeth: a retrospective medium-term study. *International Endodontic Journal*, 47, 967–973.
- Clark, D. & Khademi, J. (2010) Modern molar endodontic access and directed dentin conservation. *Dental Clinics*, 54, 249–273.
- Cloet, E., Debels, E. & Naert, I. (2017) Controlled clinical trial on the outcome of glass fibre composite cores versus wrought posts and cast cores for the restoration of endodontically treated teeth: a 5-year follow-up study. *International Journal of Prosthodontics*, 30, 71–79.
- Comba, A., Baldi, A., Saratti, C.M., Rocca, G.T., Torres, C.R.G., Pereira, G.K.R. et al. (2021) Could different direct restoration techniques affect interfacial gap and fracture resistance of endodontically treated anterior teeth? *Clinical Oral Investigations*, 25, 5967–5975.
- Creugers, N.H., Mentink, A.G., Fokkinga, W.A. & Kreulen, C.M. (2005) 5-year follow-up of a prospective clinical study on various types of core restorations. *International Journal of Prosthodontics*, 18, 34–39.
- Dal Piva, A.M.O., Tribst, J.P.M., Souza, R. & Borges, A.L.S. (2017) Influence of alveolar bone loss and cement layer thickness on the biomechanical behavior of endodontically treated maxillary incisors: a 3-dimensional finite element analysis. *Journal of Endodontics*, 43, 791–795.



- Dal Piva, A.M.O., Tribst, J.P.M., Borges, A.L.S., Bottino, M.A. & Souza, R.O.A. (2018) Do mechanical advantages exist in relining fiber posts with composite prior to its cementation? *Journal of Adhesive Dentistry*, 20, 511–518.
- Dammaschke, T., Nykiel, K., Sagheri, D. & Schafer, E. (2013) Influence of coronal restorations on the fracture resistance of root canal-treated premolar and molar teeth: a retrospective study. *Australian Endodontic Journal*, 39, 48–56.
- D'Arcangelo, C., Zarow, M., De Angelis, F., Vadini, M., Paolantonio, M., Giannoni, M. et al. (2014) Five-year retrospective clinical study of indirect composite restorations luted with a light-cured composite in posterior teeth. *Clinical Oral Investigations*, 18, 615–624.
- de Souza, N.C., Marcondes, M.L., da Silva, D., Borges, G.A., Junior, L.B. & Spohr, A.M. (2016) Relined fiberglass post: effect of luting length, resin cement, and cyclic loading on the bond to weakened root dentin. *Operative Dentistry*, 41, e174–e182.
- Dietschi, D. & Spreafico, R. (1998) Current clinical concepts for adhesive cementation of tooth-colored posterior restorations. *Practical Periodontics and Aesthetic Dentistry*, 10, 47–54.
- Dietschi, D. & Spreafico, R.C. (2019) Evidence-based concepts and procedures for bonded inlays and onlays. Part III. A case series with long-term clinical results and follow-up. *International Journal of Esthetic Dentistry*, 14, 118–133.
- Dioguardi, M., Alovise, M., Troiano, G., Caponio, C.V., Baldi, A., Rocca, G.T. et al. (2021) Clinical outcome of bonded partial indirect posterior restorations on vital and non-vital teeth: a systematic review and meta-analysis. *Clinical Oral Investigations*, 25, 6597–6621.
- Douglas, R.D. (2000) Color stability of new-generation indirect resins for prosthodontic application. *The Journal of Prosthetic Dentistry*, 83, 166–170.
- Driscoll, C.O., Dowker, S.E., Anderson, P., Wilson, R.M. & Gulabivala, K. (2002) Effects of sodium hypochlorite solution on root dentine composition. *Journal of Materials Science: Materials in Medicine*, 13, 219–223.
- Eckerbom, M. & Magnusson, T. (2001) Restoring endodontically treated teeth: a survey of current opinions among board-certified prosthodontists and general dental practitioners in Sweden. *International Journal of Prosthodontics*, 14, 245–249.
- El-Ma'aita, A., Al-Rabab'ah, M., Abu-Awwad, M., Hattar, S. & Devlin, H. (2022) Endocrowns clinical performance and patient satisfaction: a randomized clinical trial of three monolithic ceramic restorations. *Journal of Prosthodontics*, 31, 30–37.
- Enrich-Essvein, T., Rodríguez-Navarro, A.B., Álvarez-Lloret, P., Cifuentes-Jiménez, C., Bolaños-Carmona, M.V. & González-López, S. (2021) Proanthocyanidin-functionalized hydroxyapatite nanoparticles as dentin biomodifier. *Dental Materials*, 37, 1437–1445.
- Farina, A.P., Chiela, H., Carlini-Junior, B., Mesquita, M.F., Miyagaki, D.C., Randi Ferraz, C.C. et al. (2016) Influence of cement type and relining procedure on push-out bond strength of fiber posts after cyclic loading. *Journal of Prosthodontics*, 25, 54–60.
- Fathy, H., Hamama, H.H., El-Wassefy, N. & Mahmoud, S.H. (2022) Clinical performance of resin-matrix ceramic partial coverage restorations: a systematic review. *Clinical Oral Investigations*, 23, 1–6.
- Fawzy, A.S., Nitisusanta, L.I., Iqbal, K., Daood, U. & Neo, J. (2012) Riboflavin as a dentin crosslinking agent: ultraviolet a versus blue light. *Dental Materials*, 28, 1284–1291.
- Ferracane, J.L. (2011) Resin composite—state of the art. *Dental Materials*, 27, 29–38.
- Ferrari, M., Cagidiaco, M.C., Goracci, C., Vichi, A., Mason, P.N., Radovic, I. et al. (2007) Long-term retrospective study of the clinical performance of fibre posts. *American Journal of Dentistry*, 20, 287–291.
- Ferrari, M., Vichi, A., Fadda, G.M., Cagidiaco, M.C., Tay, F.R., Breschi, L. et al. (2012) A randomized controlled trial of endodontically treated and restored premolars. *Journal of Dental Research*, 91, S72–S78.
- Ferrari, M., Koken, S., Grandini, S., Cagidiaco, E.F., Joda, T. & Discepoli, N. (2018) Influence of cervical margin relocation (CMR) on periodontal health: 12-month results of a controlled trial. *Journal of Dentistry*, 69, 70–76.
- Ferrari, M., Cagidiaco, E.F., Goracci, C., Sorrentino, R., Zarone, F., Grandini, S. et al. (2019) Posterior partial crowns out of lithium disilicate (LS2) with or without posts: a randomized controlled prospective clinical trial with a 3-year follow up. *Journal of Dentistry*, 83, 12–17.
- Ferrari, M., Pontoriero, D.I.K., Ferrari Cagidiaco, E. & Carboncini, F. (2022) Restorative difficulty evaluation system of endodontically treated teeth. *Journal of Esthetic and Restorative Dentistry*, 34, 65–80.
- Feuerstein, O., Matalon, S., Slutzky, H. & Weiss, E.I. (2007) Antibacterial properties of self-etching dental adhesive systems. *Journal of the American Dental Association*, 138, 349–354.
- Figueiredo, F.E., Martins-Filho, P.R. & Faria, E.S.A.L. (2015) Do metal post-retained restorations result in more root fractures than fiber post-retained restorations? A systematic review and meta-analysis. *Journal of Endodontics*, 41, 309–316.
- Fokkinga, W.A., Kreulen, C.M., Vallittu, P.K. & Creugers, N.H. (2004) A structured analysis of in vitro failure loads and failure modes of fiber, metal, and ceramic post-and-core systems. *International Journal of Prosthodontics*, 17, 476–482.
- Fokkinga, W.A., Kreulen, C.M., Bronkhorst, E.M. & Creugers, N.H. (2007) Up to 17-year controlled clinical study on post-and-cores and covering crowns. *Journal of Dentistry*, 35, 778–786.
- Fokkinga, W.A., Kreulen, C.M., Bronkhorst, E.M. & Creugers, N.H. (2008) Composite resin core-crown reconstructions: an up to 17-year follow-up of a controlled clinical trial. *International Journal of Prosthodontics*, 21, 109–115.
- Fuss, Z., Lustig, J., Katz, A. & Tamse, A. (2001) An evaluation of endodontically treated vertical root fractured teeth: impact of operative procedures. *Journal of Endodontics*, 27, 46–48.
- Garcia, P.P., Wambier, L.M., de Geus, J.L., da Cunha, L.F., Correr, G.M. & Gonzaga, C.C. (2019) Do anterior and posterior teeth treated with post-and-core restorations have similar failure rates? A systematic review and meta-analysis. *Journal of Prosthetic Dentistry*, 121, 887–894.e4.
- Gegauff, A.G. (2000) Effect of crown lengthening and ferrule placement on static load failure of cemented cast post-cores and crowns. *Journal of Prosthetic Dentistry*, 84, 169–179.
- Ghezzi, C., Brambilla, G., Conti, A., Dosoli, R., Ceroni, F. & Ferrantino, L. (2019) Cervical margin relocation: case series and new classification system. *International Journal of Esthetic Dentistry*, 14, 272–284.
- Grandini, S., Sapio, S. & Simonetti, M. (2003) Use of anatomic post and core for reconstructing an endodontically treated tooth: a case report. *Journal of Adhesive Dentistry*, 5, 243–247.

- Gresnigt, M.M., Ozcan, M., van den Houten, M.L., Schipper, L. & Cune, M.S. (2016) Fracture strength, failure type and Weibull characteristics of lithium disilicate and multiphase resin composite endocrowns under axial and lateral forces. *Dental Materials*, 32, 607–614.
- Grigoratos, D., Knowles, J., Ng, Y.L. & Gulabivala, K. (2001) Effect of exposing dentine to sodium hypochlorite and calcium hydroxide on its flexural strength and elastic modulus. *International Endodontic Journal*, 34, 113–119.
- Guess, P.C., Schultheis, S., Wolkewitz, M., Zhang, Y. & Strub, J.R. (2013) Influence of preparation design and ceramic thicknesses on fracture resistance and failure modes of premolar partial coverage restorations. *Journal of Prosthetic Dentistry*, 110, 264–273.
- Hansen, E.K. & Asmussen, E. (1993) Cusp fracture of endodontically treated posterior teeth restored with amalgam: teeth restored in Denmark before 1975 versus after 1979. *Acta Odontologica Scandinavica*, 51, 73–77.
- Hayashi, J., Espigares, J., Takagaki, T., Shimada, Y., Tagami, J., Numata, T. et al. (2019) Real-time in-depth imaging of gap formation in bulk-fill resin composites. *Dental Materials*, 35, 585–596.
- He, J., Zheng, Z., Wu, M., Zheng, C., Zeng, Y. & Yan, W. (2021) Influence of restorative material and cement on the stress distribution of endocrowns: 3D finite element analysis. *BMC Oral Health*, 21, 495.
- Helfer, A.R., Melnick, S. & Schilder, H. (1972) Determination of the moisture content of vital and pulpless teeth. *Oral Surgery, Oral Medicine, and Oral Pathology*, 34, 661–670.
- Ichim, I., Kuzmanovic, D.V. & Love, R.M. (2006) A finite element analysis of ferrule design on restoration resistance and distribution of stress within a root. *International Endodontic Journal*, 39, 443–452.
- Ikram, O.H., Patel, S., Sauro, S. & Mannocci, F. (2009) Micro-computed tomography of tooth tissue volume changes following endodontic procedures and post space preparation. *International Endodontic Journal*, 42, 1071–1076.
- Ilie, N., Bucuta, S. & Draenert, M. (2013) Bulk-fill resin-based composites: an in vitro assessment of their mechanical performance. *Operative Dentistry*, 38, 618–625.
- Imazato, S., Kuramoto, A., Takahashi, Y., Ebisu, S. & Peters, M.C. (2006) In vitro antibacterial effects of dentin primer of Clearfil protect bond. *Dental Materials*, 22, 527–532.
- Irie, M., Suzuki, K. & Watts, D.C. (2002) Marginal gap formation of light-activated restorative materials: effects of immediate setting shrinkage and bond strength. *Dental Materials*, 18, 203–210.
- Irie, M., Suzuki, K. & Watts, D.C. (2004) Immediate performance of self-etching versus system adhesives with multiple light-activated restoratives. *Dental Materials*, 20, 873–880.
- Isufi, A., Plotino, G., Grande, N.M., Ioppolo, P., Testarelli, L., Bedini, R. et al. (2016) Fracture resistance of endodontically treated teeth restored with a bulkfill flowable material and a resin composite. *Annali di Stomatologia*, 7, 4.
- Jameson, M.W., Hood, J.A. & Tidmarsh, B.G. (1993) The effects of dehydration and rehydration on some mechanical properties of human dentine. *Journal of Biomechanics*, 26, 1055–1065.
- Juloski, J., Radovic, I., Goracci, C., Vulicevic, Z.R. & Ferrari, M. (2012) Ferrule effect: a literature review. *Journal of Endodontics*, 38, 11–19.
- Juloski, J., Köken, S. & Ferrari, M. (2018) Cervical margin relocation in indirect adhesive restorations: a literature review. *Journal of Prosthodontic Research*, 62, 273–280.
- Kakaboura, A., Rahiotis, C., Watts, D., Silikas, N. & Eliades, G. (2007) 3D-marginal adaptation versus setting shrinkage in light-cured microhybrid resin composites. *Dental Materials*, 23, 272–278.
- Kamin, S. (1989) The biologic width--periodontal-restorative relationship. *Singapore Dental Journal*, 14, 13–15.
- Kanca, J., 3rd. (1996) Wet bonding: effect of drying time and distance. *American Journal of Dentistry*, 9, 273–276.
- Kang, S.H., Kim, B.S. & Kim, Y. (2016) Cracked teeth: distribution, characteristics, and survival after root canal treatment. *Journal of Endodontics*, 42, 557–562.
- Khan, A.A., Al-Kheraif, A.A., Mohamed, B.A., Perea-Lowery, L., Sailynoja, E. & Vallittu, P.K. (2018) Influence of primers on the properties of the adhesive interface between resin composite luting cement and fiber-reinforced composite. *Journal of the Mechanical Behavior of Biomedical Materials*, 88, 281–287.
- Khan, A.A., Mohamed, B.A., Al-Shamrani, S.S., Ramakrishnaiah, R., Perea-Lowery, L., Sailynoja, E. et al. (2019) Influence of monomer systems on the bond strength between resin composites and polymerized fiber-reinforced composite upon aging. *The Journal of Adhesive Dentistry*, 21, 509–516.
- Khvostenko, D., Salehi, S., Naleway, S.E., Hilton, T.J., Ferracane, J.L., Mitchell, J.C. et al. (2015) Cyclic mechanical loading promotes bacterial penetration along composite restoration marginal gaps. *Dental Materials*, 31, 702–710.
- Kielbassa, A.M., Attin, T. & Hellwig, E. (1997) Diffusion behavior of eugenol from zinc oxide–eugenol mixtures through human and bovine dentin in vitro. *Operative Dentistry*, 22, 15–20.
- Kishen, A. (2015) Biomechanics of fractures in endodontically treated teeth. *Endodontic Topics*, 33, 3–13.
- Kishen, A. & Asundi, A. (2005) Experimental investigation on the role of water in the mechanical behavior of structural dentine. *Journal of Biomedical Materials Research Part A*, 73, 192–200.
- Kishen, A. & Vedantam, S. (2007) Hydromechanics in dentine: role of dentinal tubules and hydrostatic pressure on mechanical stress-strain distribution. *Dental Materials*, 23, 1296–1306.
- Kishen, A., Shi, Z., Shrestha, A. & Neoh, K.G. (2008) An investigation on the antibacterial and antibiofilm efficacy of cationic nanoparticulates for root canal disinfection. *Journal of Endodontics*, 34, 1515–1520.
- Kishen, A., Shrestha, S., Shrestha, A., Cheng, C. & Goh, C. (2016) Characterizing the collagen stabilizing effect of crosslinked chitosan nanoparticles against collagenase degradation. *Dental Materials*, 32, 968–977.
- Krastl, G., Weiger, R., Filippi, A., Van Waes, H., Ebeleseder, K., Ree, M. et al. (2021) Endodontic management of traumatized permanent teeth: a comprehensive review. *International Endodontic Journal*, 54, 1221–1245.
- Kul, E., Yanikoglu, N., Yesildal Yeter, K., Bayindir, F. & Sakarya, R.E. (2020) A comparison of the fracture resistance of premolars without a ferrule with different post systems. *Journal of Prosthetic Dentistry*, 123, 523.e1–523.e5.
- Kwak, Y., Choi, J., Kim, K., Shin, S.J., Kim, S. & Kim, E. (2019) The 5-year survival rate of nonsurgical endodontic treatment: a population-based cohort study in Korea. *Journal of Endodontics*, 45, 1192–1199.

- Lang, H., Korkmaz, Y., Schneider, K. & Raab, W.H. (2006) Impact of endodontic treatments on the rigidity of the root. *Journal of Dental Research*, 85, 364–368.
- Laumbacher, H., Strasser, T., Knüttel, H. & Rosentritt, M. (2021) Long-term clinical performance and complications of zirconia-based tooth- and implant-supported fixed prosthodontic restorations: a summary of systematic reviews. *Journal of Dentistry*, 111, 103723.
- Leong, D.J., de Souza, N.N., Sultana, R. & Yap, A.U. (2020) Outcomes of endodontically treated cracked teeth: a systematic review and meta-analysis. *Clinical Oral Investigations*, 24, 465–473.
- Li, F. & Kishen, A. (2018) Deciphering dentin tissue biomechanics using digital moiré interferometry: a narrative review. *Optics and Lasers in Engineering*, 107, 273–280.
- Li, F.C., Nicholson, E., Singh, C.V. & Kishen, A. (2020) Microtissue engineering root dentin with photodynamically cross-linked nanoparticles improves fatigue resistance of endodontically treated teeth. *Journal of Endodontics*, 46, 668–674.
- Loewenstein, W.R. & Rathkamp, R. (1955) A study on the pressure-receptive sensibility of the tooth. *Journal of Dental Research*, 34, 287–294.
- Lu, T., Peng, L., Xiong, F., Lin, X.Y., Zhang, P., Lin, Z.T. et al. (2018) A 3-year clinical evaluation of endodontically treated posterior teeth restored with two different materials using the CEREC AC chair-side system. *Journal of Prosthetic Dentistry*, 119, 363–368.
- Ma, P.S., Nicholls, J.I., Junge, T. & Phillips, K.M. (2009) Load fatigue of teeth with different ferrule lengths, restored with fibre posts, composite resin cores, and all-ceramic crowns. *The Journal of Prosthetic Dentistry*, 102, 229–234.
- Macedo, V.C., Faria e Silva, A.L. & Martins, L.R. (2010) Effect of cement type, relining procedure, and length of cementation on pull-out bond strength of fiber posts. *Journal of Endodontics*, 36, 1543–1546.
- Madhavan, K., Belchenko, D., Motta, A. & Tan, W. (2010) Evaluation of composition and crosslinking effects on collagen-based composite constructs. *Acta Biomaterialia*, 6, 1413–1422.
- Magne, P. (2021) MiM for DME: matrix-in-a-matrix technique for deep margin elevation. *The Journal of Prosthetic Dentistry*. <https://doi.org/10.1016/j.prosdent.2021.11.021>
- Magne, P., Lazari, P.C., Carvalho, M.A., Johnson, T. & Del Bel Cury, A.A. (2017) Ferrule-effect dominates over use of a fiber post when restoring endodontically treated incisors: an in vitro study. *Operative Dentistry*, 42(4), 396–406.
- Malament, K.A., Margvelashvili-Malament, M., Natto, Z.S., Thompson, V., Rekow, D. & Att, W. (2021) Comparison of 16.9-year survival of pressed acid etched e. max lithium disilicate glass-ceramic complete and partial coverage restorations in posterior teeth: performance and outcomes as a function of tooth position, age, sex, and thickness of ceramic material. *The Journal of Prosthetic Dentistry*, 126, 533–545.
- Mannocci, F., Bertelli, E., Sherriff, M., Watson, T.F. & Pitt Ford, T.R. (2002) Three-year clinical comparison of survival of endodontically treated teeth restored with either full cast coverage or with direct composite restoration. *The Journal of Prosthetic Dentistry*, 88, 297–301.
- Mannocci, F., Bhuva, B. & Stern, S. (2008) Restoring teeth following root canal re-treatment. *Endodontic Topics*, 19, 125–152.
- Marending, M., Luder, H.U., Brunner, T.J., Knecht, S., Stark, W.J. & Zehnder, M. (2007) Effect of sodium hypochlorite on human root dentine—mechanical, chemical and structural evaluation. *International Endodontic Journal*, 40, 786–793.
- Marinescu, A.G., Cirligeriu, L.E., Boscornea-puşcu, A.S., Horhat, R.M., Sgîia, S.T., Stoia, D.I. et al. (2020) Fracture strength evaluation of teeth with different designs of endodontic access cavities. *Romanian Journal of Oral Rehabilitation*, 12, 76–84.
- Martins, M.D., Junqueira, R.B., de Carvalho, R.F., Lacerda, M., Fae, D.S. & Lemos, C.A.A. (2021) Is a fiber post better than a metal post for the restoration of endodontically treated teeth? A systematic review and meta-analysis. *Journal of Dentistry*, 112, 103750.
- Menezes, M.S., Queiroz, E.C., Campos, R.E., Martins, L.R.M. & Soares, C.J. (2008) Influence of endodontic sealer cement on fibreglass post bond strength to root dentine. *International Endodontic Journal*, 41, 476–484.
- Morimoto, S., Rebello de Sampaio, F.B., Braga, M.M., Sesma, N. & Özcan, M. (2016) Survival rate of resin and ceramic inlays, onlays, and overlays: a systematic review and meta-analysis. *Journal of Dental Research*, 95, 985–994.
- Mosznar, N., Fischer, U.K., Ganster, B., Liska, R. & Rheinberger, V. (2008) Benzoyl germanium derivatives as novel visible light photoinitiators for dental materials. *Dental Materials*, 24, 901–907.
- Nadeau, B., Chen, Z. & Kishen, A. (2019) Free water loss-induced heterogeneous residual strain and reduced fatigue resistance in root dentine: a 3-dimensional digital image correlation analysis. *Journal of Endodontics*, 45, 742–749.
- Nagasiri, R. & Chitmongkolsuk, S. (2005) Long-term survival of endodontically treated molars without crown coverage: a retrospective cohort study. *Journal of Prosthetic Dentistry*, 93, 164–170.
- Naumann, M., Sterzenbach, G., Dietrich, T., Bitter, K., Frankenberger, R. & von Stein-Launsitz, M. (2017) Dentin-like versus rigid endodontic post: 11-year randomized controlled pilot trial on no-wall to 2-wall defects. *Journal of Endodontics*, 43, 1770–1775.
- Naumann, M., Schmitter, M., Frankenberger, R. & Krastl, G. (2018) “Ferrule comes first. Post is second!” fake news and alternative facts? A systematic review. *Journal of Endodontics*, 44, 212–219.
- Nikolaenko, S.A., Lohbauer, U., Roggendorf, M., Petschelt, A., Dasch, W. & Frankenberger, R. (2004) Influence of c-factor and layering technique on microtensile bond strength to dentin. *Dental Materials*, 20, 579–585.
- Oglakci, B., Kazak, M., Donmez, N., Dalkilic, E.E. & Koymen, S.S. (2019) The use of a liner under different bulk-fill resin composites: 3D GAP formation analysis by x-ray microcomputed tomography. *Journal of Applied Oral Science*, 28, e2019004.
- Öztürk, E., Bolay, Ş., Hickel, R. & Ilie, N. (2013) Shear bond strength of porcelain laminate veneers to enamel, dentine and enamel-dentine complex bonded with different adhesive luting systems. *Journal of Dentistry*, 41, 97–105.
- Pantvisai, P. & Messer, H.H. (1995) Cuspal deflection in molars in relation to endodontic and restorative procedures. *Journal of Endodontics*, 21, 57–61.
- Papa, J., Cain, C. & Messer, H.H. (1994) Moisture content of vital vs endodontically treated teeth. *Dental Traumatology*, 10, 91–93.
- Pashley, D.H. (1990) Dentin permeability. In: LSW, S. (Ed.) *Experimental endodontics*. CRC Press, pp. 20–46.
- Pashley, D.H. (1991) Dentin bonding: overview of the substrate with respect to adhesive material. *Journal of Esthetic and Restorative Dentistry*, 3, 46–50.



- Pashley, D.H., Tay, F.R., Breschi, L., Tjäderhane, L., Carvalho, R.M., Carrilho, M. et al. (2011) State of the art etch-and-rinse adhesives. *Dental Materials*, 27, 1–16.
- Patel, S., Bhuva, B. & Bose, R. (2022) Vertical root fractures in root treated teeth-current status and future trends. *International Endodontic Journal*, 55, 804–826.
- Perdigão, J., Reis, A. & Loguercio, A.D. (2013) Dentin adhesion and MMPs: a comprehensive review. *Journal of Esthetic and Restorative Dentistry*, 25, 219–241.
- Pereira, R.D., Leoni, G.B., Silva-Sousa, Y.T., Gomes, E.A., Dias, T.R., Brito-Júnior, M. et al. (2021) Impact of conservative endodontic cavities on root canal preparation and biomechanical behavior of upper premolars restored with different materials. *Journal of Endodontics*, 47, 989–999.
- Plotino, G., Grande, N.M., Isufi, A., Ioppolo, P., Pedullà, E., Bedini, R. et al. (2017) Fracture strength of endodontically treated teeth with different access cavity designs. *Journal of Endodontics*, 43, 995–1000.
- Prati, C., Chersoni, S., Montebugnoli, L. & Montanari, G. (1999) Effect of air, dentin and resin-based composite thickness on light intensity reduction. *American Journal of Dentistry*, 12, 231–234.
- Pratt, I., Aminoshariae, A., Montagnese, T.A., Williams, K.A., Khalighinejad, N. & Mickel, A. (2016) Eight-year retrospective study of the critical time lapse between root canal completion and crown placement: its influence on the survival of endodontically treated teeth. *Journal of Endodontics*, 42, 1598–1603.
- Pupo, Y.M., Farago, P.V., Nadal, J.M., Simão, L.C., Esmerino, L.A., Gomes, O.M.M. et al. (2014) Effect of a novel quaternary ammonium methacrylate polymer (QAMP) on adhesion and antibacterial properties of dental adhesives. *International Journal of Molecular Sciences*, 15, 8998–9015.
- Randow, K. & Glantz, P.O. (1986) On cantilever loading of vital and non-vital teeth an experimental clinical study. *Acta Odontologica Scandinavica*, 44, 271–277.
- Rashidi, H., Yang, J. & Shakesheff, K.M. (2014) Surface engineering of synthetic polymer materials for tissue engineering and regenerative medicine applications. *Biomaterials Science*, 2, 1318–1331.
- Reddington, L., Knowles, J., Nazhat, S., Young, A., Gulabivala, K. & Ng, Y.L. (2003) An in vitro evaluation of the visco-elastic behaviour and composition of dentine matrix soaked in EDTA and NaOCl independently and in combination. *International Endodontic Journal*, 36, 939.
- Ree, M.H. & Schwartz, R.S. (2017) Long-term success of nonvital, immature permanent incisors treated with a mineral trioxide aggregate plug and adhesive restorations: a case series from a private endodontic practice. *Journal of Endodontics*, 43, 1370–1377.
- Reeh, E.S., Messer, H.H. & Douglas, W.H. (1989) Reduction in tooth stiffness as a result of endodontic and restorative procedures. *Journal of Endodontics*, 15, 512–516.
- Rocca, G.T., Sedlakova, P., Saratti, C.M., Sedlacek, R., Gregor, L., Rizcalla, N. et al. (2016) Fatigue behavior of resin-modified monolithic CAD-CAM RNC crowns and endocrowns. *Dental Materials*, 32, e338–e350.
- Rosa, W.L., Piva, E. & Silva, A.F. (2015) Bond strength of universal adhesives: a systematic review and meta-analysis. *Journal of Dentistry*, 43, 765–776.
- Rueggeberg, F.A., Caughman, W.F., Curtis, J.W., Jr. & Davis, H.C. (1993) Factors affecting cure at depths within light-activated resin composites. *American Journal of Dentistry*, 6, 91–95.
- Sabatini, C. & Patel, S.K. (2013) Matrix metalloproteinase inhibitory properties of benzalkonium chloride stabilizes adhesive interfaces. *European Journal of Oral Sciences*, 121, 610–616.
- Saberi, E.A., Pirhaji, A. & Zabetiyan, F. (2020) Effects of endodontic access cavity design and thermocycling on fracture strength of endodontically treated teeth. *Clinical, Cosmetic and Investigational Dentistry*, 12, 149–156.
- Sailer, I., Makarov, N.A., Thoma, D.S., Zwahlen, M. & Pjetursson, B.E. (2015) All-ceramic or metal-ceramic tooth-supported fixed dental prostheses (FDPs)? A systematic review of the survival and complication rates. Part I: single crowns (SCs). *Dental Materials*, 31, 603–623.
- Salehrabi, R. & Rotstein, I. (2004) Endodontic treatment outcomes in a large patient population in the USA: an epidemiological study. *Journal of Endodontics*, 30, 846–850.
- Sampaio, P.C., de Almeida Junior, A.A., Francisconi, L.F., Casas-Apayco, L.C., Pereira, J.C., Wang, L. et al. (2011) Effect of conventional and resin-modified glass-ionomer liner on dentin adhesive interface of class I cavity walls after thermocycling. *Operative Dentistry*, 36, 403–412.
- Santos, G.C., Jr., Santos, M.J. & Rizkalla, A.S. (2009) Adhesive cementation of etchable ceramic esthetic restorations. *Journal of the Canadian Dental Association*, 75, 379–384.
- Santos, T., Abu Hasna, A., Abreu, R.T., Tribst, J.P.M., de Andrade, G.S., Borges, A.L.S. et al. (2022) Fracture resistance and stress distribution of weakened teeth reinforced with a bundled glass fiber-reinforced resin post. *Clinical Oral Investigations*, 26, 1725–1735.
- Santosh, S.S., Ballal, S. & Natanasabapathy, V. (2021) Influence of minimally invasive access cavity designs on the fracture resistance of endodontically treated mandibular molars subjected to thermocycling and dynamic loading. *Journal of Endodontics*, 47, 1496–1500.
- Saratti, C.M., Rocca, G.T., Durual, S., Lohbauer, U., Ferracane, J.L. & Scherrer, S.S. (2021) Fractography of clinical failures of indirect resin composite endocrown and overlay restorations. *Dental Materials*, 37, e341–e359.
- Sarfati, A. & Tirlet, G. (2018) Deep margin elevation versus crown lengthening: biologic width revisited. *International Journal of Esthetic Dentistry*, 13, 334–356.
- Sauro, S. & Pashley, D.H. (2016) Strategies to stabilise dentine-bonded interfaces through remineralising operative approaches – state of the art. *International Journal of Adhesion and Adhesives*, 69, 39–57.
- Sauro, S., Watson, T.F., Thompson, I., Toledano, M., Nucci, C. & Banerjee, A. (2012a) Influence of air-abrasion executed with polyacrylic acid-bioglass 45S5 on the bonding performance of a resin-modified glass ionomer cement. *European Journal of Oral Sciences*, 20, 168–177.
- Sauro, S., Watson, T.F., Thompson, I. & Banerjee, A. (2012b) One-bottle self-etching adhesives applied to dentine air-abraded using bioactive glasses containing polyacrylic acid: an in vitro microtensile bond strength and confocal microscopy study. *Journal of Dentistry*, 40, 896–905.
- Sauro, S., Faus-Matoses, V., Makeeva, I., Nuñez Martí, J.M., Gonzalez Martínez, R., García Bautista, J.A. et al. (2018) Effects of polyacrylic acid pre-treatment on bonded-dentine interfaces created with a modern bioactive resin-modified glass ionomer cement and subjected to cycling mechanical stress. *Materials (Basel)*, 11, 1884.
- Sauro, S., Makeeva, I., Faus-Matoses, V., Foschi, F., Giovarruscio, M., Maciel Pires, P. et al. (2019) Effects of ions-releasing restorative



- materials on the dentine bonding longevity of modern universal adhesives after load-cycle and prolonged artificial saliva aging. *Materials (Basel)*, 12, 722.
- Scaffa, P.M., Vidal, C.M., Barros, N., Gesteira, T.F., Carmona, A.K., Breschi, L. et al. (2012) Chlorhexidine inhibits the activity of dental cysteine cathepsins. *Journal of Dental Research*, 91, 420–425.
- Schmitter, M., Doz, P., Rammelsberg, P., Gabbert, O. & Ohlmann, B. (2007) Influence of clinical baseline findings on the survival of 2 post systems: a randomized clinical trial. *International Journal of Prosthodontics*, 20, 173–178.
- Schmitter, M., Hamadi, K. & Rammelsberg, P. (2011) Survival of two post systems-five-year results of a randomized clinical trial. *Quintessence International*, 42, 843–850.
- Schwartz, R.S., Murchison, D.F. & Walker, W.A. (1998) Effects of eugenol and noneugenol endodontic sealer cements on post retention. *Journal of Endodontics*, 24, 564–567.
- Sedgley, C.M. & Messer, H.H. (1992) Are endodontically treated teeth more brittle? *Journal of Endodontics*, 18, 332–335.
- Sequeira-Byron, P., Fedorowicz, Z., Carter, B., Nasser, M. & Alrowaili, E.F. (2015) Single crowns versus conventional fillings for the restoration of root-filled teeth. *The Cochrane Database of Systematic Reviews*, 9, CD009109.
- Setzer, F.C., Boyer, K.R., Jeppson, J.R., Karabucak, B. & Kim, S. (2011) Long-term prognosis of endodontically treated teeth: a retrospective analysis of preoperative factors in molars. *Journal of Endodontics*, 37, 21–25.
- Shrestha, A., Friedman, S. & Kishen, A. (2011) Photodynamically crosslinked and chitosan-incorporated dentin collagen. *Journal of Dental Research*, 90, 1346–1351.
- Signore, A., Benedicenti, S., Kaitsas, V., Barone, M., Angiero, F. & Ravera, G. (2009) Long-term survival of endodontically treated, maxillary anterior teeth restored with either tapered or parallel-sided glass-fibre posts and full-ceramic crown coverage. *Journal of Dentistry*, 37, 115–121.
- Silva, E.J.N.L., Pinto, K.P., Ferreira, C.M., Belladonna, F.G., De-Deus, G., Dummer, P.M. et al. (2020) Current status on minimal access cavity preparations: a critical analysis and a proposal for a universal nomenclature. *International Endodontic Journal*, 53, 1618–1635.
- Silva, C.F., Cabral, L.C., Navarro de Oliveira, M., da Mota, M.V., Machado, A.C., Blumenberg, C. et al. (2021a) The influence of customization of glass fiber posts on fracture strength and failure pattern: a systematic review and meta-analysis of pre-clinical ex-vivo studies. *Journal of the Mechanical Behavior of Biomedical Materials*, 118, 104433.
- Silva, E.J.N.L., Versiani, M.A., Souza, E.M. & De-Deus, G. (2021b) Minimally invasive access cavities: does size really matter? *International Endodontic Journal*, 54, 153–155.
- Silva, E.J.N.L., De-Deus, G., Souza, E.M., Belladonna, F.G., Cavalcante, D.M., Simões-Carvalho, M. et al. (2022) Present status and future directions – minimal endodontic access cavities. *International Endodontic Journal*, 55, 531–587.
- Sim, I.G., Lim, T.S., Krishnaswamy, G. & Chen, N.N. (2016) Decision making for retention of endodontically treated posterior cracked teeth: a 5-year follow-up study. *Journal of Endodontics*, 42, 225–229.
- Skupien, J.A., Luz, M.S. & Pereira-Cenci, T. (2016) Ferrule effect: a meta-analysis. *JDR Clinical and Translational Research*, 1, 31–39.
- Slimani, A., Sauro, S., Gatón Hernández, P., Gurgan, S., Turkun, L.S., Miletic, I. et al. (2021) Commercially available ion-releasing dental materials and cavitated carious lesions: clinical treatment options. *Materials (Basel)*, 14, 6272.
- Söderholm KJ. Dental adhesives... how it all started and later evolved. *The Journal of Adhesive Dentistry*. 2007;(9 Suppl):227–230. Erratum in: *J Adhes Dent*. 2007 Dec;9(6):546.
- Sorensen, J.A. & Engelman, M.J. (1990) Ferrule design and fracture resistance of endodontically treated teeth. *Journal of Prosthetic Dentistry*, 63, 529–536.
- Spagnuolo, G., Pires, P.M., Calarco, A., Peluso, G., Banerjee, A., Rengo, S. et al. (2021) An in-vitro study investigating the effect of air-abrasion bioactive glasses on dental adhesion, cytotoxicity and odontogenic gene expression. *Dental Materials*, 37, 1734–1750.
- Spitznagel, F.A., Scholz, K.J., Strub, J.R., Vach, K. & Gierthmuehlen, P.C. (2018) Polymer-infiltrated ceramic CAD/CAM inlays and partial coverage restorations: 3-year results of a prospective clinical study over 5 years. *Clinical Oral Investigations*, 22, 1973–1983.
- Sturm, R., Prates Soares, A., Sterzenbach, G. & Bitter, K. (2021) Interface analysis after fatigue loading of adhesively luted bundled fiber posts to human root canal dentin. *Journal of the Mechanical Behavior of Biomedical Materials*, 119, 104385.
- Sung, H.W., Chang, Y., Chiu, C.T., Chen, C.N. & Liang, H.C. (1999) Crosslinking characteristics and mechanical properties of a bovine pericardium fixed with a naturally occurring crosslinking agent. *Journal of Biomedical Materials Research*, 47, 116–126.
- Tada, S., Allen, P.F., Ikebe, K., Zheng, H., Shintani, A. & Maeda, Y. (2015) The impact of the crown-root ratio on survival of abutment teeth for dentures. *Journal of Dental Research*, 94, 220S–225S.
- Tan, L., Chen, N.N., Poon, C.Y. & Wong, H.B. (2006) Survival of root filled cracked teeth in a tertiary institution. *International Endodontic Journal*, 39, 886–889.
- Teichmann, M., Göckler, F., Weber, V., Yildirim, M., Wolfart, S. & Edelhoff, D. (2017) Ten-year survival and complication rates of lithium-disilicate (empress 2) tooth-supported crowns, implant-supported crowns, and fixed dental prostheses. *Journal of Dentistry*, 56, 65–77.
- Tekçe, N., Pala, K., Demirci, M. et al. (2016) Influence of different composite materials and cavity preparation designs on the fracture resistance of mesio-occluso-distal inlay restoration. *Dental Materials*, 35, 523–531.
- Thomas RM, Kelly A, Tagiyeva N, Kanagasingam S (2020). Comparing endocrown restorations on permanent molars and premolars: a systematic review and meta-analysis. *British Dental Journal*. <https://doi.org/10.1038/s41415-020-2279-y>. Epub ahead of print
- Tian, F., Jett, K., Flaugh, R., Arora, S., Bergeron, B., Shen, Y. et al. (2021) Effects of dentine surface cleaning on bonding of a self-etch adhesive to root canal sealer-contaminated dentine. *Journal of Dentistry*, 112, 103766.
- Toledano, M., Cabello, I., Aguilera, F.S., Osorio, E. & Osorio, R. (2015) Effect of in vitro chewing and bruxism events on remineralization, at the resin-dentin interface. *Journal of Biomechanics*, 48, 14–21.
- Torbjörner, A. & Fransson, B. (2004) A literature review on the prosthetic treatment of structurally compromised teeth. *International Journal of Prosthodontics*, 17, 369–376.

- Tribst, J.P.M., Lo Giudice, R., Dos Santos, A.F.C., Borges, A.L.S., Silva-Concilio, L.R., Amaral, M. et al. (2021) Lithium disilicate ceramic Endocrown biomechanical response according to different pulp chamber extension angles and filling materials. *Materials (Basel)*, 14, 1307.
- Vallittu, P.K. (2009) Interpenetrating polymer networks (IPNs) in dental polymers and composites. *Journal of Adhesion Science and Technology*, 23, 961–972.
- Van Meerbeek, B., De Munck, J., Yoshida, Y., Inoue, S., Vargas, M., Vijay, P. et al. (2003) Buonocore memorial lecture. Adhesion to enamel and dentin: current status and future challenges. *Operative Dentistry*, 28, 215–235.
- Van Meerbeek, B., Van Landuyt, K., De Munck, J., Hashimoto, M., Peumans, M., Lambrechts, P. et al. (2005) Technique-sensitivity of contemporary adhesives. *Dental Materials Journal*, 24, 1–3.
- Wang, X., Shu, X., Zhang, Y., Yang, B., Jian, Y. & Zhao, K. (2019) Evaluation of fiber posts vs metal posts for restoring severely damaged endodontically treated teeth: a systematic review and meta-analysis. *Quintessence International*, 50, 8–20.
- Wollensak, G. & Iomdina, E. (2009) Long-term biomechanical properties of rabbit sclera after collagen crosslinking using riboflavin and ultraviolet a (UVA). *Acta Ophthalmologica*, 87, 193–198.
- Xiong, J., Shen, L., Jiang, Q. & Kishen, A. (2020) Effect of crosslinked chitosan nanoparticles on the bonding quality of fiber posts in root canals. *Journal of Adhesive Dentistry*, 22, 321–330.
- Yan, W., Montoya, C., Oilo, M. et al. (2017) Reduction in fracture resistance of the root with aging. *Journal of Endodontics*, 43, 1494–1498.
- Yanik, D. & Turker, N. (2022) Stress distribution of a novel bundle fiber post with curved roots and oval canals. *Journal of Esthetic and Restorative Dentistry*, 34, 550–556.
- Yildirim, G., Demir, C., Güven, M.Ç., Koç, O. & Dalkılıç, E.E. (2021) Influence of fiber insertion and different material type on stress distribution in endocrown restorations: a 3D-FEA study. *Computer Methods in Biomechanics and Biomedical Engineering*, 1–11. <https://doi.org/10.1080/10255842.2021.2019228>
- Yiu, C.K., Hiraishi, N., Tay, F.R. & King, N.M. (2012) Effect of chlorhexidine into dental adhesive resin on durability of resin-dentin bond. *The Journal of Adhesive Dentistry*, 14, 355–362.
- Zheng, Z., Sun, J., Jiang, L., Wu, Y., He, J., Ruan, W. et al. (2022) Influence of margin design and restorative material on the stress distribution of endocrowns: a 3D finite element analysis. *BMC Oral Health*, 22, 30.

**How to cite this article:** Mannocci, F., Bitter, K., Sauro, S., Ferrari, P., Austin, R. & Bhuva, B. (2022) Present status and future directions: The restoration of root filled teeth. *International Endodontic Journal*, 55(Suppl. 4), 1059–1084. Available from: <https://doi.org/10.1111/iej.13796>