

# Changes in quality of life, depression, general anxiety, and heart-focused anxiety after defibrillator implantation

Ingrid Kindermann<sup>1\*‡</sup>, Sonja Maria Wedegärtner<sup>1‡</sup>, Benedikt Bernhard<sup>1</sup>, Julia Ukena<sup>1</sup>, Denise Lenski<sup>1</sup>, Julia Karbach<sup>2</sup>, Igor Schwantke<sup>1</sup>, Christian Ukena<sup>1</sup> and Michael Böhm<sup>1</sup>

<sup>1</sup>Department of Internal Medicine III (Cardiology, Angiology and Intensive Care), Saarland University Medical Center, Saarland University, Kirrbergerstraße 100, Homburg, Saarland 66421, Germany; and <sup>2</sup>Department of Psychology, University of Koblenz and Landau, Landau, Germany

## Abstract

**Aims** The Anxiety-CHF (Anxiety in patients with Chronic Heart Failure) study investigated heart-focused anxiety (HFA, with the dimensions fear, attention, and avoidance of physical activity), general anxiety, depression, and quality of life (QoL) in patients with heart failure. Psychological measures were assessed before and up to 2 years after the implantation of an implantable cardioverter defibrillator (ICD) with or without cardiac resynchronization therapy defibrillator (CRT-D).

**Methods and results** One hundred thirty-two patients were enrolled in this monocentric prospective study (44/88 CRT-D/ICD, mean age  $61 \pm 14$  years, mean left ventricular ejection fraction  $31 \pm 9\%$ , and 29% women). Psychological assessment was performed before device implantation as well as after 5, 12, and 24 months. After device implantation, mean total HFA, HFA-fear, HFA-attention, general anxiety, and QoL improved significantly. Depression and HFA-related avoidance of physical activity did not change. CRT-D patients compared with ICD recipients and women compared with men reported worse QoL at baseline. Younger patients (<median of 63 years) had higher levels of general anxiety and lower levels of HFA-avoidance at baseline than older patients. After 24 months, groups no longer differed from each other on these scores. Patients with a history of shock or anti-tachycardia pacing (shock/ATP;  $N = 19$ ) reported no improvements in psychological measures and had significantly higher total HFA and HFA-avoidance levels after 2 years than participants without shock/ATP.

**Conclusions** Anxiety and QoL improved after device implantation, and depression and HFA-avoidance remained unchanged. HFA may be more pronounced after shock/ATP. Psychological counselling in these patients to reduce HFA and increase physical activity should be considered.

**Keywords** Implantable cardioverter defibrillator; Implantation; Heart failure; Heart-focused anxiety; General anxiety; Quality of life

Received: 13 May 2020; Revised: 15 April 2021; Accepted: 30 April 2021

\*Correspondence to: Ingrid Kindermann, Department of Internal Medicine III (Cardiology, Angiology and Intensive Care), Saarland University Medical Center, Saarland University, Kirrbergerstraße 100, Homburg, Saarland 66421, Germany. Tel: 0049/6841-1615240; Fax: 0049/6841-1615390. Email: ingrid.kindermann@uks.eu

‡Trial registration: ClinicalTrials.gov identifier NCT02226770.

<sup>‡</sup>Ingrid Kindermann and Sonja Maria Wedegärtner contributed equally to the writing of this article.

## Introduction

Randomized controlled trials have demonstrated the efficacy of implantable cardioverter defibrillator (ICD) alone or in combination with cardiac resynchronization therapy defibrillator (CRT-D) in patients with chronic heart failure (CHF) and reduced left ventricular ejection fraction (LVEF),<sup>1</sup> in primary and secondary prevention.<sup>2</sup> Patients receiving an ICD often suffer from psychological co-morbidities and impaired

quality of life (QoL).<sup>3–6</sup> General anxiety and depression are present in ~20% of device recipients<sup>4</sup> and are associated with increased morbidity and mortality.<sup>7</sup> Symptoms of pre-existing depression and impaired QoL seem to persist after device implantation.<sup>8</sup> Additionally, device-related concerns, such as the fear of receiving a shock, seem to further increase psychological distress and predicted higher levels of depression and anxiety.<sup>9</sup> A specific pattern of anxiety is heart-focused anxiety (HFA).<sup>10,11</sup> It comprises the fear of cardiac-related

sensations,<sup>11</sup> the attention to cardiac symptoms, and the avoidance of eliciting activities,<sup>12</sup> for example, physical or sexual activity.<sup>13,14</sup> HFA is associated with poor QoL,<sup>15</sup> breathlessness, palpitations, and chest pain, leading to preventable hospitalizations.<sup>16</sup> In patients with ICD, HFA predicts concerns about the ICD and feelings of disability.<sup>17</sup> Psychological care might reduce symptoms and hospitalizations.<sup>18</sup> However, in the patient–physician communication, psychological risks for device recipients are often not appropriately addressed.<sup>19</sup>

Although several studies investigated psychological co-morbidities in ICD recipients,<sup>3,4,7–9</sup> to the best of our knowledge, there are no data available on whether patients with devices have less or more HFA after implantation. In the Anxiety-CHF (Anxiety in patients with Chronic Heart Failure) study, we evaluated HFA, general anxiety, depression, and QoL across four measurement occasions before and up to 24 months after ICD or CRT-D implantation.

## Methods

### Patients and design

Inclusion criterion of this monocentric prospective study was the indication for ICD implantation for primary or secondary prevention of sudden cardiac death according to current guidelines.<sup>2</sup> Indication for primary prevention was symptomatic CHF according to the New York Heart Association (NYHA) Classes II and III with reduced LVEF ( $\leq 35\%$ ) despite 3 months of optimal medical treatment. Secondary prevention was applied in patients who survived haemodynamically relevant ventricular arrhythmias. Patients with left bundle branch block and QRS duration  $\geq 130$  ms were provided with a CRT-D. Devices were programmed according to current guideline recommendations.<sup>20</sup> Exclusion criteria were drug abuse, progressing dementia, and psychosis.

All patients provided written informed consent. Baseline assessment was performed at the time of hospital admission with a median of 1 day prior to device implantation. At baseline, as well as 5 months (5M), 12 months (12M), and 24 months (24M) after implantation, participants completed self-report questionnaires assessing HFA, general anxiety, depression, and QoL. Furthermore, number and triggers of shocks and anti-tachycardia pacing (ATP) as well as CHF-related hospitalizations were recorded at each follow-up. Baseline characteristics included co-morbidities, medications, cardiovascular risk factors, blood pressure, laboratory parameters, and demographic characteristics and are summarized in *Table 1*.

The study was approved by the Ethics Committee of the Saarland Medical Association in accordance with the Declaration of Helsinki. Detailed description of the Anxiety-CHF study

design and cross-sectional baseline data were reported previously.<sup>21</sup>

### Psychological measures

Psychological assessment was based on validated self-report questionnaires (German versions). Cut-off scores are provided in Supporting Information, *Table S1*. The Cardiac Anxiety Questionnaire served to measure HFA, including 17 items rated on a 5-point Likert-scale from 0 (never) to 4 (always).<sup>11</sup> It yields a total HFA score and three subscores (HFA-fear, HFA-attention, and HFA-avoidance) with age-dependent and sex-dependent cut-off scores.<sup>22</sup> Higher scores indicate higher levels of HFA. The Hospital Anxiety and Depression Scale (HADS) was used to assess symptoms of general anxiety (HADS-A) and depression (HADS-D).<sup>23</sup> It consists of 14 items rated on a 4-point Likert-scale from 0 (no/does not apply) to 3 (yes/applies most of the time). Seven items determine symptoms of general anxiety and depression, respectively, with higher sum scores referring to higher symptom levels. Scores  $>7$  indicate increased anxiety or depressive symptoms.<sup>24</sup> The Minnesota Living with Heart Failure Questionnaire was applied to record CHF-specific QoL.<sup>25</sup> It consists of 21 items rated on a 6-point Likert-scale from 0 (no) to 5 (very much), with higher scores representing lower QoL. Impaired QoL is indicated by sum scores  $>24$ .<sup>26</sup>

### Medical measures

Assessment of NYHA class, LVEF, and N-terminal pro-brain natriuretic peptide (NT-proBNP) at follow-up was not scheduled. However, when the information was available, changes from baseline to 5M, 12M, and 24M were evaluated. Routine follow-up with device interrogation was performed for 117 patients at our outpatient heart failure clinic and for 15 in other outpatient units.

### Biometry and statistics

Data analyses were performed using IBM (Armonk, NY) SPSS Statistics 25 for Windows.<sup>27</sup> Baseline data were evaluated by means and standard deviation for metric variables, by median and inter-quartile range (IQR) for NT-proBNP, and by frequencies and percentage for categorical variables. To compare subgroups according to device (ICD vs. CRT-D), shock/ATP (yes vs. no), sex (women vs. men), or age ( $<63$  vs.  $\geq 63$  years), *t*-tests were used for continuous variables. For the highly skewed NT-proBNP, we applied a Mann–Whitney *U* test. If Levene's test revealed a violation of homoscedasticity, we used the Welch *t*-test. Categorical variables were analysed by  $\chi^2$  tests. For the analysis of mean changes over time in the whole sample, one-way repeated

Table 1 Demographic and clinical characteristics of the Anxiety-CHF cohort (N = 132) before ICD/CRT-D implantation

	Total	Sex		Age		Device		P
		Female	Male	<63 years	≥63 years	ICD	CRT-D	
N (%)	132	38 (29)	94 (71)	63 (48)	69 (52)	88 (67)	44 (33)	<0.001
Age (years), mean ± SD	61 ± 14	55 ± 16	63 ± 12	50 ± 12	71 ± 5	58 ± 14	68 ± 10	<0.001
Device, N (%)								
ICD		20 (53)	68 (72)	12 (19)	37 (54)	79 (90)	42 (96)	0.266
CRT-D		18 (47)	26 (28)	57 (91)	32 (46)	9 (10)	2 (4)	
Indication, N (%)	121 (92)	34 (90)	87 (93)	64 (93)	64 (93)	31.5 ± 9.6	28.8 ± 6.4	0.098
Primary prevention	11 (8)	4 (10)	7 (7)	6 (9)	5 (7)	40 (46)	17 (39)	0.249
Secondary prevention	30.6 ± 8.7	32.2 ± 10.1	30 ± 8.1	31.1 ± 10.5	30.1 ± 6.8	7 (8)	1 (2)	<0.001
LVEF (%), mean ± SD	57 (43)	12 (32)	45 (48)	22 (35)	35 (51)	9 (10)	0	
Underlying disease, N (%)	67 (51)	21 (55)	46 (49)	34 (54)	33 (48)	63 (72)	16 (37)	0.497
ICM	8 (6)	5 (13)	3 (3)	7 (11)	1 (1)	16 (18)	27 (63)	0.534
DCM	9 (7)	3 (8)	6 (6)	7 (11)	2 (3)	7 (8)	1 (2)	0.027
Others <sup>a</sup>	79 (60)	18 (49)	61 (65)	39 (62)	40 (59)	9 (10)	0	0.106
NYHA class, N (%) <sup>b</sup>	43 (33)	16 (43)	27 (29)	17 (27)	26 (38)	63 (72)	16 (37)	<0.001
I	128 ± 21	125 ± 22	129 ± 21	125 ± 20	131 ± 22	126 ± 21	132 ± 21	0.111
II	75 ± 11	71 ± 11	77 ± 11	74 ± 10	76 ± 12	75 ± 12	76 ± 9	0.563
III	94 (71)	22 (60)	72 (77)	40 (63)	54 (78)	61 (69)	33 (75)	0.497
Blood pressure (mmHg), mean ± SD	55 (42)	18 (47)	37 (39)	15 (24)	40 (58)	29 (23)	26 (59)	0.004
Systolic	76 (58)	24 (63)	52 (55)	37 (59)	39 (56)	49 (56)	27 (61)	0.534
Diastolic	25 (19)	9 (24)	16 (17)	20 (32)	5 (7)	19 (21)	6 (14)	0.567
CVRF, N (%)	53 (40)	13 (34)	40 (43)	21 (33)	32 (47)	35 (40)	18 (42)	
History of hypertension	53 (40)	16 (42)	37 (40)	22 (35)	31 (46)	34 (39)	19 (44)	
Diabetes mellitus	1280	1718	1235	845	1884	1075	1884	0.045
Dyslipidaemia	(653–2714)	(434–1719)	(667–2396)	(339–2213)	(1054–4855)	(481–2423)	(842–5317)	<0.001
Smoking status, N (%) <sup>b</sup>	63 ± 25	66 ± 22	61 ± 26	76 ± 22	45 ± 17	68 ± 25	48 ± 21	
Currently	5.7 ± 9.4	3.8 ± 3.6	6.5 ± 10.9	4.7 ± 7.5	6.6 ± 10.9	5.5 ± 8.7	6.2 ± 10.6	0.672
Previously	13.8 ± 1.6	13.3 ± 1.4	14 ± 1.7	14.2 ± 1.8	13.4 ± 1.4	14.1 ± 1.6	13.2 ± 1.6	0.001
Never	130 (99)	38 (100)	92 (98)	61 (97)	69 (100)	86 (98)	44 (100)	0.552
Laboratory values	122 (92)	35 (92)	87 (93)	58 (92)	64 (93)	81 (92)	41 (93)	1
NT-proBNP (pg/mL), median (IQR)	117 (89)	32 (84)	85 (90)	53 (84)	64 (93)	74 (84)	43 (98)	0.020
Creatinine GFR (mL/min/1.73 m <sup>2</sup> , CKD-EPI), mean ± SD	104 (79)	31 (82)	73 (79)	49 (79)	55 (80)	65 (75)	39 (89)	0.063
CRP (mg/L), mean ± SD	10 (8)	5 (13)	5 (5)	1 (2)	9 (13)	6 (7)	4 (9)	0.731
Hb (g/dL), mean ± SD								
Medication, N (%)								
Beta-blocker								
ACE inhibitor/AT <sub>1</sub> antagonist								
Diuretic								
Aldosterone antagonist								
Digitalis								

ACE, angiotensin-converting enzyme; AT, angiotensin; CKD-EPI, Chronic Kidney Disease Epidemiology Collaboration; CRP, C-reactive protein; CRT-D, cardiac resynchronization therapy defibrillator; CVRF, cardiovascular risk factors; DCM, dilated cardiomyopathy; GFR, glomerular filtration rate; Hb, haemoglobin; ICD, implantable cardioverter defibrillator; ICM, ischemic cardiomyopathy; IQR, inter-quartile range; LVEF, left ventricular ejection fraction; NT-proBNP, N-terminal pro-brain natriuretic peptide; NYHA, New York Heart Association; SD, standard deviation.

P-values were determined by independent samples t-tests for continuous, normally distributed variables or by Mann-Whitney U test for non-normally distributed variables. Categorical values were analysed by  $\chi^2$  tests. P-values representing significant effects are printed in bold.

<sup>a</sup>Others were non-compaction cardiomyopathy (N = 2), Takotsubo cardiomyopathy (N = 1), cardiac sarcoidosis (N = 1), restrictive cardiomyopathy in systemic amyloidosis (N = 1), malignant ventricular arrhythmia (N = 1), idiopathic ventricular fibrillation (N = 1), and hypertrophic cardiomyopathy (N = 1).

<sup>b</sup>One missing value for NYHA class in women and patients with CRT-D and one missing value for smoking status.

measures analyses of variance (ANOVAs) with the within-subject factor time (baseline, 5M, 12M, and 24M) were conducted. If the Mauchly sphericity test was significant, a Huynh–Feldt correction was applied for mild violation ( $\epsilon > 0.75$ ). To control for  $\alpha$ -error accumulation, the SPSS tool Bonferroni correction was applied in *post hoc* analyses. For changes in the NYHA class and NT-proBNP, we applied the Friedman test. The two-tailed significance level was set at  $\alpha < 0.05$ . To avoid list-wise case exclusion, we imputed missing psychological data in the follow-up surveys based on a linear regression approach.

## Results

Between July 2010 and October 2015, 142 patients were enrolled. Ten participants were subsequently excluded because of cancelled device implantation ( $N = 4$ ) or cognitive impairment ( $N = 6$ ), leading to a final sample of  $N = 132$  (Figure 1). The follow-up surveys were attended by 116 (5M), 100

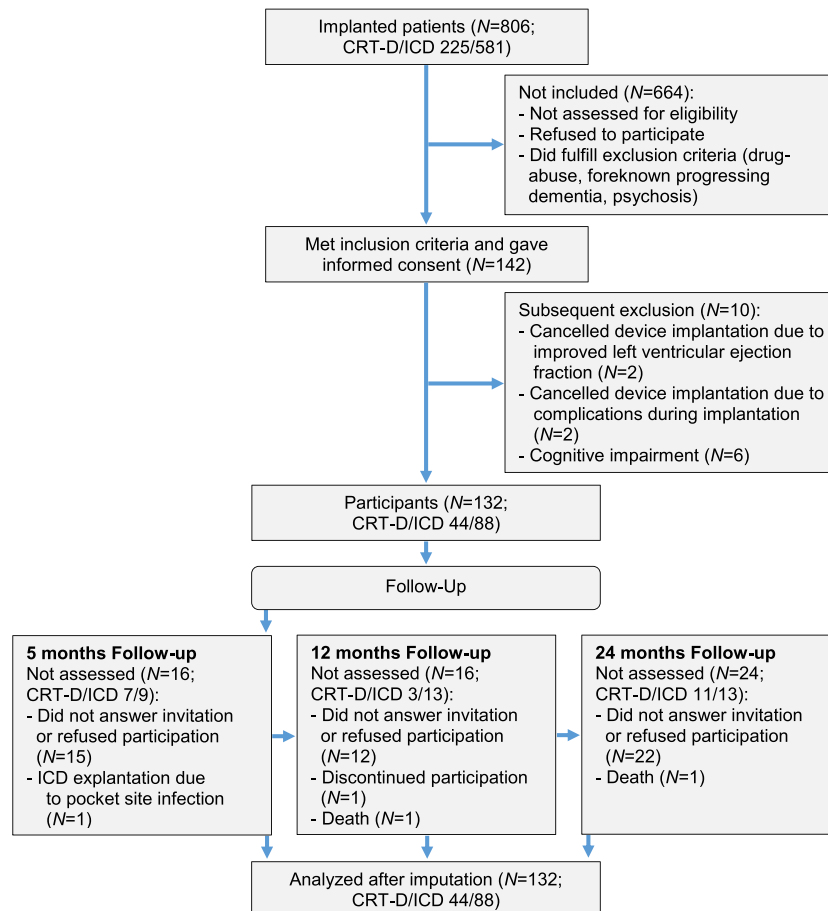
(12M), and 76 (24M) patients, and 119 patients completed at least one follow-up.

## Baseline demographic and medical characteristics

The mean age of the patients was  $61 \pm 14$  years (71% male). Mean LVEF was  $31 \pm 9\%$ , and the majority of participants received the device for primary prevention (92%). Preoperative NYHA class, blood pressure, laboratory results, and medication, as well as underlying disease, are summarized in Table 1.

Patients with indication for CRT-D implantation differed significantly from ICD recipients in demographic and medical characteristics. CRT-D patients were older ( $68 \pm 10$  vs.  $58 \pm 14$  years,  $P < 0.001$ ) and had higher median (IQR) NT-proBNP [1884 (842–5317) vs. 1075 (481–2423) pg/mL,  $P = 0.045$ ]. They were significantly more often in NYHA Class III (63% vs. 18%,  $P < 0.001$ ), and less likely in NYHA Class II (37% vs. 72%,  $P < 0.001$ ). Patients with indication for CRT-D implantation more often presented with diabetes mellitus (59% vs. 23%,  $P = 0.004$ ), received more often

**Figure 1** The CONSORT flow diagram demonstrating the distribution of participants and dropouts. CRT-D, cardiac resynchronization therapy defibrillator, ICD, implantable cardioverter defibrillator.



diuretic medication (98% vs. 84%,  $P = 0.020$ ), and had lower mean creatinine GFR ( $48 \pm 21$  vs.  $68 \pm 25$  mL/min/1.73 m<sup>2</sup>,  $P < 0.001$ ) and Hb values ( $13.2 \pm 1.6$  vs.  $14.1 \pm 1.6$  g/dL,  $P = 0.001$ ). Further subgroup comparisons of baseline characteristics according to device (CRT-D vs. ICD), sex (women vs. men), and median age ( $<63$  vs.  $\geq 63$  years) are reported in *Table 1*.

## Changes in medical variables after device implantation

In patients with indication for CRT-D, median (IQR) NT-proBNP before compared with 24 months after implantation was 3357 (1049–6122) and 1338 (494–3669) pg/mL,  $P = 0.102$  ( $N = 6$ ). A decreased NYHA class was observed in eight patients, an increased NYHA class in three patients, and no change in one patient,  $P = 0.227$  ( $N = 12$ ). Mean LVEF was  $31 \pm 10\%$  before vs.  $37 \pm 11\%$  24 months after implantation,  $P = 0.471$  ( $N = 6$ ).

Implantable cardioverter defibrillator patients had a median (IQR) NT-proBNP of 849 (562–2202) pg/mL at baseline and 639 (126–3070) pg/mL 24 months after implantation,  $P = 0.439$  ( $N = 15$ ). NYHA class decreased in 5 patients, increased in 12 patients, and was stable in 17 patients,  $P = 0.090$  ( $N = 34$ ). Mean LVEF was  $29 \pm 7\%$  vs.  $29 \pm 13\%$  before and 24 months after implantation,  $P = 0.959$  ( $N = 22$ ).

During follow-up, 44 participants (38%) were hospitalized at least once for cardiovascular reasons; 19 patients (16%) had ventricular arrhythmias, which were terminated in 12 patients by ATP only and in seven patients by shock ( $N = 3$  CRT-D and  $N = 16$  ICD).

## Psychological status and quality of life before and after device implantation

Mean scores (standard deviation) of the psychological variables, as well as single comparisons of subgroups as a function of visit (baseline, 5M, 12M, and 24M), are provided in *Table 2*. Results of the repeated measures ANOVA and *post hoc* single comparisons between baseline and 5M, 12M, and 24M, respectively, for all patients and subgroups are presented in *Figure 2* for HFA and related subscores and in *Figure 3* for general anxiety, depression, and QoL.

### Heart-focused anxiety and related subscores

Before implantation, 44% of participants had clinically relevant HFA (total score). HFA-related fear, attention, and avoidance were increased in 38%, 26%, and 44% of the patients. Significant improvements after implantation were observed in the mean total HFA score [ $F(3, 393) = 9.31$ ,  $P < 0.001$ ,  $\eta_p^2 = 0.07$ ], as well as in the HFA-attention and HFA-fear scores [ $F(2.79, 364.82) = 16.94$ ,  $P < 0.001$ ,  $\eta_p^2 = 0.12$  and  $F(2.89,$

$378.29) = 5.68$ ,  $P = 0.001$ ,  $\eta_p^2 = 0.04$ ]. HFA-related avoidance of physical activity did not change ( $P = 0.375$ ). Two years after implantation, 30% of patients reported clinically relevant HFA (total score). HFA-fear, HFA-attention, and HFA-avoidance were increased in 26%, 14%, and 37% of participants.

### Subgroup analyses for heart-focused anxiety outcomes

At baseline, older participants reported higher HFA-avoidance than younger patients [mean difference (MD) = 0.5, 95% confidence interval (CI) 0.1–0.8,  $P = 0.014$ ]. Mean total HFA, HFA-fear, and HFA-attention did not differ between age groups. All other subgroups had similar mean total HFA and related subscores before device implantation (patients with CRT-D vs. ICD indication, patients with shock/ATP vs. no shock/ATP, and women vs. men).

After implantation, HFA-avoidance did not change in any of the groups. Total HFA, HFA-fear, and HFA-attention decreased in most of the groups. But in younger patients, total HFA and HFA-fear did not improve. In patients with ICD implantation, HFA-fear did not change. Patients after shock/ATP reported no improvements in any of the HFA scores.

### General anxiety, depression, and quality of life

Increased levels of general anxiety were reported by 37% of patients at baseline. Depressive symptoms were increased in 33%, and QoL was impaired in 68% of participants. Mean scores of general anxiety and QoL decreased significantly after implantation [ $F(2.84, 371.87) = 6.17$ ,  $P = 0.001$ ,  $\eta_p^2 = 0.05$  and  $F(2.68, 351.40) = 6.74$ ,  $P < 0.001$ ,  $\eta_p^2 = 0.05$ ]. Depression did not change ( $P = 0.146$ ). After 2 years, increased levels of general anxiety and depression were reported by 33% and 35% of patients, respectively, and impaired QoL by 58%.

### Subgroup analysis for general anxiety, depression, and quality of life outcomes

Younger patients experienced significantly higher general anxiety than older participants at baseline (MD = 2.0, 95% CI 0.5–3.5,  $P = 0.012$ ). The other subgroups did not differ significantly in mean general anxiety scores. After implantation, general anxiety improved in older participants, patients with CRT-D and without shock/ATP, and men, but not in younger participants, patients with ICD and shock/ATP, or women.

Depression scores were similar between all subgroups at baseline and did not change in any of the subgroups after implantation, except for patients without shock/ATP. In this subgroup, the main effect for time in the repeated measures ANOVA was significant [ $F(2.84, 275.68) = 3.06$ ,  $P = 0.031$ ,  $\eta_p^2 = 0.03$ ], but Bonferroni-corrected *post hoc* single comparisons between baseline and 5M, 12M, and 24M, respectively, were not.

Quality of life was lower in CRT-D compared with ICD recipients at baseline (MD = 8.1, 95% CI 0.4–15.8,  $P = 0.040$ ) and in women compared with men (MD = 9.7, 95% CI 1.7–17.7,  $P = 0.018$ ). After implantation, QoL improved significantly in CRT-D recipients and in women. Improvements in

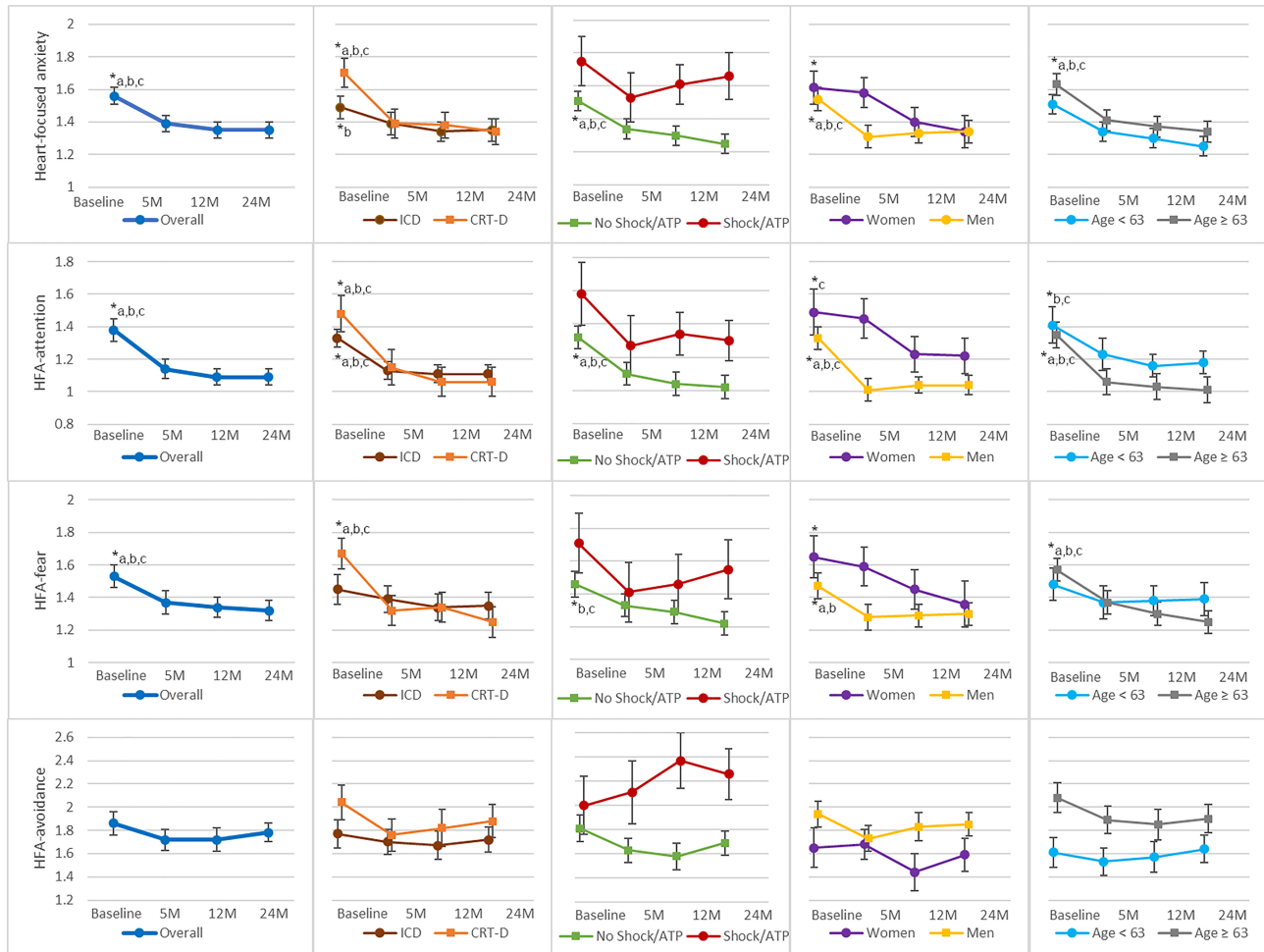


**Table 2** Means (SD) and group comparison for psychological measures at baseline and follow-up

Baseline	HFA Total	P	HFA-attention	P	HFA-fear	P	HFA-avoidance	P	Anxiety	P	Depression	P	QoL Total	P
Overall (n = 132)	1.6 ± 0.7		1.4 ± 0.8		1.5 ± 0.8		1.9 ± 1.1		6.3 ± 4.4		6.3 ± 4.5		35.2 ± 21.4	
ICD (n = 88)	1.5 ± 0.7	.079	1.3 ± 0.8	.278	1.5 ± 0.8	.129	1.8 ± 1.1	.176	6.3 ± 4.7	.741	6.1 ± 4.6	.483	32.5 ± 21.4	.040
vs.			vs.		vs.		vs.		vs.		vs.		vs.	
CRT-D (n = 44)	1.7 ± 0.6		1.5 ± 0.7		1.7 ± 0.7		2.0 ± 1.0		6.1 ± 3.9		6.7 ± 4.4		40.6 ± 20.5	
Shock/ATP (n = 19)	1.8 ± 0.7	.128	1.6 ± 0.8	.184	1.7 ± 0.8	.192	2.0 ± 1.0	.539	6.1 ± 4.4	.889	6.1 ± 5.3	.936	33.2 ± 19.9	.867
vs.			vs.		vs.		vs.		vs.		vs.		vs.	
No shock/ATP (n = 98)	1.5 ± 0.6		1.3 ± 0.7		1.5 ± 0.7		1.8 ± 1.1		5.9 ± 4.5		6.0 ± 4.6		34.1 ± 22.2	
Women (n = 38)	1.6 ± 0.7	.620	1.5 ± 0.9	.272	1.7 ± 0.8	.234	1.7 ± 1.1	.169	7.4 ± 4.7	.051	6.3 ± 3.8	.996	42.1 ± 21.9	.018
vs.			vs.		vs.		vs.		vs.		vs.		vs.	
Men (n = 94)	1.5 ± 0.7		1.3 ± 0.7		1.5 ± 0.8		1.9 ± 1.1		5.8 ± 4.2		6.2 ± 4.7		32.4 ± 20.6	
Age <63 (n = 63)	1.5 ± 0.7	.243	1.4 ± 0.8	.662	1.5 ± 0.8	.491	1.6 ± 1.1	.014	7.3 ± 4.9	.012	6.6 ± 4.8	.485	37.0 ± 24.9	.343
vs.			vs.		vs.		vs.		vs.		vs.		vs.	
Age ≥63 (n = 69)	1.6 ± 0.6		1.4 ± 0.7		1.6 ± 0.8		2.1 ± 1.0		5.3 ± 3.7		6.0 ± 4.3		33.5 ± 17.6	
Overall (n = 132)	1.6 ± 0.7		1.4 ± 0.8		1.5 ± 0.8		1.9 ± 1.1		6.25 ± 4.40		6.27 ± 4.52		35.2 ± 21.4	
ICD (n = 88)	1.4 ± 0.7	1	1.1 ± 0.7	.903	1.4 ± 0.8	.611	1.7 ± 1.1	.735	5.5 ± 4.4	.282	5.9 ± 4.9	.889	28.5 ± 21.9	.665
vs.			vs.		vs.		vs.		vs.		vs.		vs.	
CRT-D (n = 44)	1.4 ± 0.6		1.2 ± 0.7		1.3 ± 0.7		1.8 ± 1.0		4.7 ± 3.8		5.7 ± 4.4		26.8 ± 17.8	
Shock/ATP (n = 19)	1.5 ± 0.6	.224	1.3 ± 0.8	.328	1.4 ± 0.8	.630	2.1 ± 1.1	.062	6.00 ± 4.4	.266	6.3 ± 5.2	.371	29.5 ± 19.1	.519
vs.			vs.		vs.		vs.		vs.		vs.		vs.	
No shock/ATP (n = 98)	1.3 ± 0.6		1.1 ± 0.7		1.3 ± 0.7		1.6 ± 1.0		4.8 ± 4.2		5.2 ± 4.6		26.2 ± 20.4	
Women (n = 38)	1.6 ± 0.6	.028	1.5 ± 0.7	.001	1.6 ± 0.7	.039	1.7 ± 0.8	.804	7.0 ± 4.2	.002	6.3 ± 4.0	.475	30.3 ± 16.5	.402
vs.			vs.		vs.		vs.		vs.		vs.		vs.	
Men (n = 94)	1.3 ± 0.7		1.0 ± 0.7		1.3 ± 0.8		1.7 ± 1.1		4.5 ± 4.1		5.6 ± 5.0		27.0 ± 22.0	
Age <63 (n = 63)	1.4 ± 0.7	.644	1.2 ± 0.8	.190	1.4 ± 0.8	.960	1.5 ± 1.0	.046	6.1 ± 4.5	.022	6.1 ± 4.7	.522	28.6 ± 20.0	.709
vs.			vs.		vs.		vs.		vs.		vs.		vs.	
Age ≥63 (n = 69)	1.4 ± 0.6		1.1 ± 0.7		1.4 ± 0.8		1.9 ± 1.0		4.4 ± 3.8		5.6 ± 4.7		27.3 ± 21.2	
Overall	1.4 ± 0.6		1.1 ± 0.6		1.3 ± 0.7		1.8 ± 1.0		5.1 ± 4.5		5.6 ± 4.5		28.8 ± 19.5	
ICD	1.3 ± 0.6	.670	1.1 ± 0.6	.651	1.3 ± 0.7	.995	1.7 ± 1.0	.366	5.4 ± 4.8	.988	5.8 ± 4.8	.359	27.8 ± 18.9	.433
vs.			vs.		vs.		vs.		vs.		vs.		vs.	
CRT-D	1.4 ± 0.5		1.1 ± 0.6		1.3 ± 0.7		1.9 ± 1.0		4.4 ± 3.7		5.4 ± 4.1		30.7 ± 20.7	
Shock/ATP (n = 19)	1.6 ± 0.5	.029	1.3 ± 0.6	.037	1.5 ± 0.8	.321	2.3 ± 0.9	.022	6.5 ± 5.4	.065	6.9 ± 5.1	.134	35.3 ± 17.8	.053
vs.			vs.		vs.		vs.		vs.		vs.		vs.	
No shock/ATP (n = 98)	1.3 ± 0.6		1.0 ± 0.6		1.3 ± 0.7		1.7 ± 1.0		4.5 ± 4.0		5.1 ± 4.1		25.8 ± 19.7	
Women	1.4 ± 0.6	.503	1.2 ± 0.7	.085	1.5 ± 0.7	.244	1.6 ± 0.9	.157	6.5 ± 4.9	.017	5.8 ± 4.5	.776	32.8 ± 17.9	.131
vs.			vs.		vs.		vs.		vs.		vs.		vs.	
Men	1.3 ± 0.6		1.0 ± 0.5		1.3 ± 0.7		1.9 ± 1.0		4.5 ± 4.2		5.6 ± 4.6		27.1 ± 20.0	
Age <63	1.3 ± 0.6	.674	1.2 ± 0.6	.205	1.4 ± 0.7	.528	1.6 ± 0.9	.127	6.2 ± 4.8	.008	6.1 ± 4.8	.281	29.9 ± 19.8	.541
vs.			vs.		vs.		vs.		vs.		vs.		vs.	
Age ≥63	1.4 ± 0.6		1.0 ± 0.6		1.3 ± 0.7		1.9 ± 1.0		4.1 ± 3.9		5.2 ± 4.3		27.8 ± 19.3	
Overall (n = 132)	1.3 ± 0.6		1.1 ± 0.6		1.3 ± 0.7		1.7 ± 1.1		5.7 ± 4.3		6.1 ± 4.7		29.1 ± 18.8	
ICD	1.4 ± 0.7	.901	1.1 ± 0.6	.656	1.4 ± 0.8	.460	1.7 ± 1.1	.455	5.8 ± 4.7	.442	6.3 ± 5.2	.433	30.5 ± 20.6	.187
vs.			vs.		vs.		vs.		vs.		vs.		vs.	
CRT-D	1.3 ± 0.5		1.1 ± 0.6		1.3 ± 0.7		1.8 ± 1.0		5.3 ± 3.3		5.6 ± 3.50		26.4 ± 14.5	
Shock/ATP (n = 19)	1.7 ± 0.6	.009	1.3 ± 0.5	.061	1.5 ± 0.8	.062	2.4 ± 1.0	.004	6.6 ± 4.8	.203	7.0 ± 5.0	.300	28.9 ± 20.3	.912
vs.			vs.		vs.		vs.		vs.		vs.		vs.	
No shock/ATP (n = 98)	1.3 ± 0.6		1.0 ± 0.6		1.2 ± 0.7		1.6 ± 1.1		5.2 ± 4.2		5.8 ± 4.8		29.5 ± 19.4	
Women	1.4 ± 0.6	.890	1.2 ± 0.7	.114	1.4 ± 0.9	.722	1.4 ± 1.0	.074	6.4 ± 4.5	.219	5.9 ± 4.7	.768	31.6 ± 20.4	.329
vs.			vs.		vs.		vs.		vs.		vs.		vs.	
Men	1.3 ± 0.6		1.0 ± 0.6		1.3 ± 0.7		1.8 ± 1.1		5.4 ± 4.2		6.2 ± 4.7		28.1 ± 18.1	
Age <63	1.4 ± 0.7	.835	1.2 ± 0.6	.113	1.4 ± 0.8	.269	1.6 ± 1.1	.146	6.2 ± 4.5	.145	6.5 ± 5.2	.382	31.7 ± 18.7	.130
vs.			vs.		vs.		vs.		vs.		vs.		vs.	
Age ≥63	1.3 ± 0.6		1.0 ± 0.6		1.3 ± 0.7		1.8 ± 1.1		5.1 ± 4.0		5.8 ± 4.2		26.7 ± 18.8	

12M, 12 month follow-up; 24M, 24 month follow-up; 5M, 5 month follow-up; ATP, anti-tachycardia pacing; CRT-D, cardiac resynchronization therapy defibrillator; Depression and anxiety, symptoms of general anxiety and depression assessed by the Hospital Anxiety and Depression Scale; HFA, heart-focused anxiety assessed by the Cardiac Anxiety Questionnaire; ICD, implantable cardioverter defibrillator; QoL, quality of life assessed by the Minnesota Living with Heart Failure Questionnaire; SD, standard deviation. P-values were determined by independent samples t-tests with the grouping variables device (ICD/CRT-D), shock/ATP (yes/no), sex (women/men), and age (<63/≥63 years). P-values representing significant effects are printed in bold.

**Figure 2** Heart-focused anxiety (HFA) and related subscores before and 5, 12, and 24 months after implantable cardioverter defibrillator (ICD)/cardiac resynchronization therapy defibrillator (CRT-D) implantation in all patients and subgroups. Results of the repeated measures ANOVA with the within-subject factor time [baseline, 5 month follow-up (5M), 12 month follow-up (12M), and 24 month follow-up (24M)] and Bonferroni-corrected *post hoc* comparisons of baseline vs. 5M, 12M, and 24M, respectively. \* $P < 0.05$  for the main effect of time in the repeated measures ANOVA. <sup>a</sup> $P < 0.05$  for differences between baseline and 5M according to Bonferroni-corrected *post hoc* analyses. <sup>b</sup> $P < 0.05$  for differences between baseline and 12M according to Bonferroni-corrected *post hoc* analyses. <sup>c</sup> $P < 0.05$  for differences between baseline and 24M according to Bonferroni-corrected *post hoc* analyses. Data points represent mean scores of the Cardiac Anxiety Questionnaire and subscores (total HFA, HFA-fear, HFA-attention, and HFA-avoidance). The error bars indicate the standard error. ATP, anti-tachycardia pacing.



QoL after implantation were also reported by men, patients without shock/ATP, and patients of both age groups. QoL did not change in ICD recipients and patients with shock/ATP.

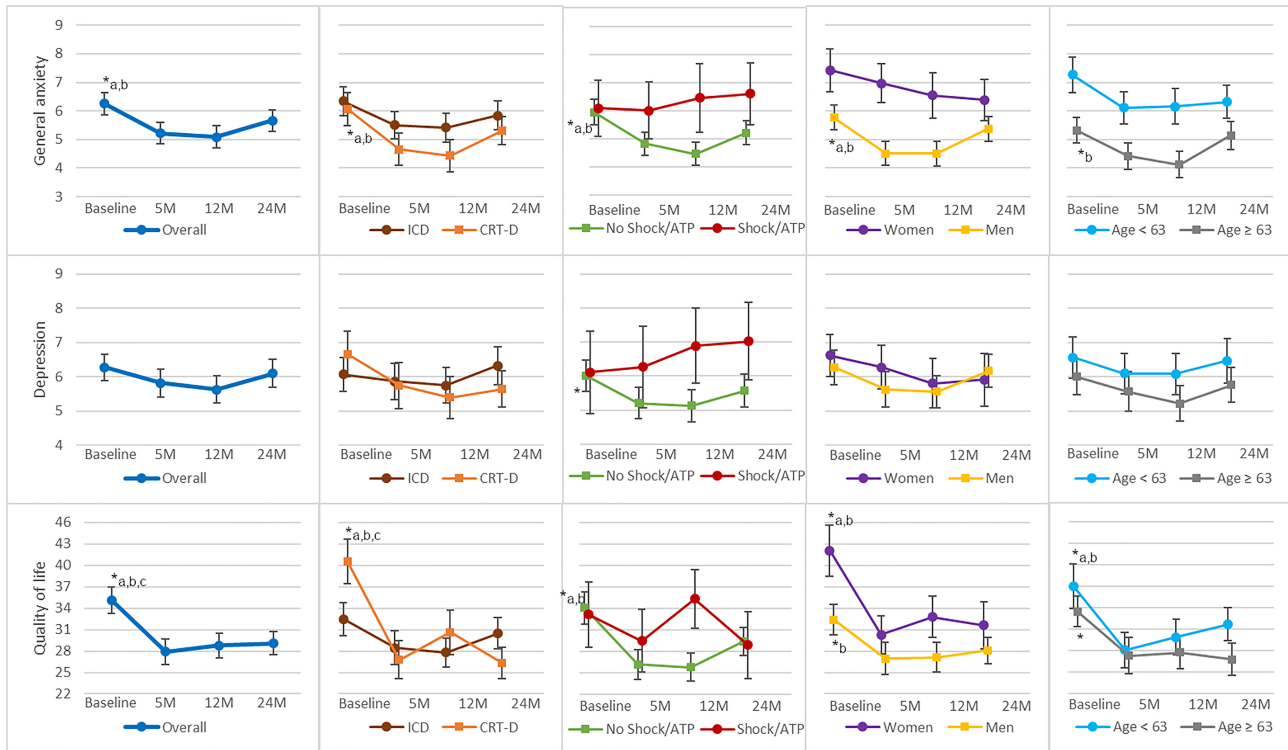
## Discussion

Total HFA and related fear and attention, general anxiety, and QoL improved significantly after device implantation. Depression and HFA-avoidance remained unchanged. The device implantation did not impair psychological outcomes in our patients. Regardless of improvements, psychological symptom levels remained high compared with the general

population,<sup>22,28</sup> and mean QoL still indicated a significant impairment after 24 months. This might be related to the high rate of psychological distress in patients with CHF<sup>29,30</sup> and the progression of heart failure with associated impairments (e.g. progressive loss of physical fitness, medication side effects, recurrent hospitalization, and co-morbidities).

Heart-focused anxiety-related avoidance of physical activity was reported by 37% of patients 2 years after implantation. In a study with patients with coronary heart disease, HFA-avoidance was associated with a lack of physical activity and with non-participation in a coronary exercise group.<sup>31</sup> In healthy individuals, it predicted lower physical activity, too.<sup>32</sup> This points to the potential detrimental effects of undetected HFA in the context of cardiac rehabilitation or secondary

**Figure 3** General anxiety, depression, and quality of life before and 5, 12, and 24 months after implantable cardioverter defibrillator (ICD)/cardiac resynchronization therapy defibrillator (CRT-D) implantation in all patients and subgroups. Results of the repeated measures ANOVA with the within-subject factor time [baseline, 5 month follow-up (5M), 12 month follow-up (12M), and 24 month follow-up (24M)] and Bonferroni-corrected *post hoc* comparisons of baseline vs. 5M, 12M, and 24M, respectively. \* $P < 0.05$  for the main effect of time in the repeated measures ANOVA. <sup>a</sup> $P < 0.05$  for differences between baseline and 5M according to Bonferroni-corrected *post hoc* analyses. <sup>b</sup> $P < 0.05$  for differences between baseline and 12M according to Bonferroni-corrected *post hoc* analyses. <sup>c</sup> $P < 0.05$  for differences between baseline and 24M according to Bonferroni-corrected *post hoc* analyses. Data points represent the mean sum scores of the Hospital Anxiety and Depression Scale (depression and general anxiety) and of the Minnesota Living with Heart Failure Questionnaire (quality of life). The error bars indicate the standard error. ATP, anti-tachycardia pacing.



prevention. Moderate exercise is safe and recommended for most individuals with device implantation. It may reduce the risk of shock delivery and is effective in the secondary prevention of cardiovascular disease.<sup>33</sup> Exercise further improves QoL in patients with ICD or CRT-D and reduces anxiety and depression.<sup>34,35</sup> Recent recommendations suggest to wait for at least 6 weeks after implantation before engaging in exercise training,<sup>36</sup> to avoid activities that increase the risk of lead dislocation (e.g. strong upper extremity movements)<sup>37</sup> and, in case of ventricular arrhythmias terminated by shock/ATP, to pause exercise for at least 3 months.<sup>36</sup> The high rate of HFA-related avoidance of physical activity after implantation in this study may partly reflect patients' concerns for ICD shocks during exercise<sup>38</sup> and a lack of specific recommendations for exercise training.<sup>39</sup> The observation of significantly higher HFA-avoidance 24 months after implantation in patients with shock/ATP compared with those without therapy delivery supports this assumption. Patients with shock/ATP furthermore reported significantly higher total HFA at 2 years after implant. This result is consistent with studies reporting higher anxiety levels in patients after

shock/ATP compared with those without<sup>40,41</sup> and might indicate an increased susceptibility for psychological impairment in these patients. Accordingly, patients with stable heart failure should be encouraged to exercise regularly after device implantation. In case of physical inactivity, the underlying reasons should be explored and discussed during consultation.

Current guidelines recommend the assessment and treatment of psychological co-morbidities in patients with indication for device implantation or patients with ICD/CRT-D.<sup>42</sup> Patients with high levels of pre-implantation ICD-related concerns are more prone to develop post-implant psychological impairments.<sup>42</sup> In our study, women compared with men and patients with indication for CRT-D compared with ICD implantation had a lower QoL at baseline. Younger recipients exhibited higher levels of general anxiety than older ones, while older patients reported higher HFA-avoidance. Physician awareness of subgroup-specific psychological concerns could facilitate the identification of individuals in need of psychological counselling and tailored interventions.

After implantation, the mean scores of the psychological variables did not improve in all subgroups. General anxiety



did improve neither in women nor in younger patients. Both had significantly higher mean scores 5 and 12 months after implantation, compared with men and older patients, respectively. Women, as well as younger device recipients, have been previously reported to exhibit more anxiety after implantation.<sup>43,44</sup> In addition, younger patients have a poorer device acceptance,<sup>44</sup> report body image concerns after implantation, and perceive the device as a limiting threat. In contrast, older patients tend to emphasize the life-extending aspects of the treatment.<sup>45</sup> Younger age and female sex may be risk markers for anxiety and poorer adjustment after implantation.

General anxiety, HFA-fear, and QoL did not change in patients with ICD, while patients with CRT-D significantly improved. Improvements of QoL in patients after CRT-D implantation but not after ICD implantation are in line with previous studies.<sup>46</sup> This might be the result of an improvement of the clinical status with correction of ventricular dyssynchrony by CRT leading to better exercise capacity.<sup>47</sup> Symptomatic heart failure is the most important clinical predictor of impaired QoL and anxiety in patients with ICD/CRT-D.<sup>48</sup> General anxiety is a predictor of HFA-fear in patients with heart failure and reduced LVEF<sup>15</sup> and is associated with reduced QoL.<sup>49</sup> Improvements in QoL and general anxiety in patients with CRT-D could account for the observed improvements in HFA-fear. In our study, NYHA class, NT-proBNP, and LVEF improved numerically in CRT-D recipients, but improvements did not reach statistical significance, probably related to the small sample size.

## Limitations

Because of the observational nature of this prospective monocentric study, findings could be confounded by the specific composition and relatively small size of the overall study group, thus reducing generalizability. Patients with different indications for device implantation and different underlying diseases, such as ischaemic and non-ischaemic cardiomyopathy, may show different psychological patterns. The absence of a control group and small sample size in some of our subgroups further limit the interpretation of results.

Nevertheless, self-reports reflect the current gold standard of assessment of our key variables, and reported levels of psychological distress prior to implantation were comparable with values assessed in ambulatory CHF patients<sup>15</sup> as well as in patients undergoing ICD implantation.<sup>49</sup>

Regarding psychological variables, we imputed missing data by linear regression. However, as stated earlier, our results are comparable with previous studies, pointing towards the validity of the data. Results regarding HFA, indeed, are novel, and a replication is desirable.

## Conclusions

The Anxiety-CHF study demonstrated improvements in anxiety and QoL after device implantation, but levels of psychological distress remained high. Physicians should be sensitive to psychological complaints of patients after ICD/CRT-D implantation. In addition to general anxiety and depression, the assessment of HFA and HFA-related avoidance of exercise especially after shock/ATP may be suitable in such populations. Psychological counselling to reduce HFA and thus increase physical activity should be considered.

## Conflict of interest

B.B., D.L., J.U., and I.S. report grants from Friede Springer Stiftung, during the conduct of the study. S.M.W. reports grants from Friede Springer Stiftung and German Heart Foundation/German Foundation of Heart Research and personal fees from Servier Deutschland GmbH, during the conduct of the study. C.U. reports grants from Friede Springer Stiftung and personal fees from Medtronic and Recor. M.B. reports grants from Friede Springer Stiftung and Deutsche Forschungsgemeinschaft and personal fees from Abbott, Amgen, AstraZeneca, Boehringer Ingelheim, Cytokinetics, Medtronic, Novartis, Servier Deutschland GmbH, and Vifor, during the conduct of the study. I.K. reports grants from Friede Springer Stiftung, German Heart Foundation/German Foundation of Heart Research, and Deutsche Forschungsgemeinschaft and personal fees from Akcea Therapeutics Germany GmbH, AstraZeneca, Alnylam, Bayer Vital GmbH, Boehringer Ingelheim, Bristol Myers Squibb Company, Daiichi Sankyo Deutschland, Hexal AG, Novartis, Pfizer Pharma GmbH, Servier Deutschland GmbH, and Vifor, during the conduct of the study.

## Funding

This work was supported by the Friede Springer Stiftung, Berlin, Germany. Open access funding was enabled and organized by Projekt DEAL.

## Supporting information

Additional supporting information may be found online in the Supporting Information section at the end of the article.

**Table S1.** Cut-off scores for questionnaires.

## References

- Shun-Shin MJ, Zheng SL, Cole GD, Howard JP, Whinnett ZI, Francis DP. Implantable cardioverter defibrillators for primary prevention of death in left ventricular dysfunction with and without ischaemic heart disease: a meta-analysis of 8567 patients in the 11 trials. *Eur Heart J* 2017; **38**: 1738–1746.
- Ponikowski P, Voors AA, Anker SD, Bueno H, Cleland JGF, Coats AJS, Falk V, González-Juanatey JR, Harjola V-P, Jankowska EA, Jessup M, Linde C, Nihoyannopoulos P, Parissis JT, Pieske B, Riley JP, Rosano GMC, Ruilope LM, Ruschitzka F, Rutten FH, van der Meer P. ESC Scientific Document Group. 2016 ESC Guidelines for the diagnosis and treatment of acute and chronic heart failure: the Task Force for the Diagnosis and Treatment of Acute and Chronic Heart Failure of the European Society of Cardiology (ESC). Developed with the special contribution of the Heart Failure Association (HFA) of the ESC. *Eur J Heart Fail* 2016; **18**: 891–975.
- Miller JL, Thylén I, Elayi SC, Etaee F, Fleming S, Czarapata MM, Lennie TA, Moser DK. Multi-morbidity burden, psychological distress, and quality of life in implantable cardioverter defibrillator recipients: results from a nationwide study. *J Psychosom Res* 2019; **120**: 39–45.
- Magyar-Russel G, Thombs BD, Cai JX, Baveja T, Kuhl EA, Singh PP, Montenegro Braga Barroso M, Arthurs E, Roseman M, Amin N, Marine JE, Ziegelstein RC. The prevalence of anxiety and depression in adults with implantable cardioverter defibrillators: a systematic review. *J Psychosom Res* 2011; **71**: 223–231.
- Albus C, Waller C, Fritzsche K, Gunold H, Haass M, Hamann B, Kindermann I, Köllner V, Leithäuser B, Marx N, Meesmann M, Michal M, Ronel J, Scherer M, Schrader V, Schwaab B, Weber CS, Herrmann-Lingen C. Significance of psychosocial factors in cardiology: update 2018. Position paper of the German Cardiac Society. *Clin Res Cardiol* 2019; **108**: 1175–1196.
- Chevalier P, Verrier P, Kirkorian G, Touboul P, Cottraux J. Improved appraisal of the quality of life in patients with automatic implantable cardioverter defibrillator. *Psychother Psychosom* 1996; **65**: 49–56.
- Habibović M, Pedersen SS, van den Broek KC, Theuns DAMJ, Jordaens L, van der Voort PH, Alings M, Denollet J. Anxiety and risk of ventricular arrhythmias or mortality in patients with an implantable cardioverter defibrillator. *Psychosom Med* 2013; **75**: 36–41.
- Knackstedt C, Arndt M, Mischke K, Marx N, Nieman F, Kunert HJ, Schauerte P, Norra C. Depression, psychological distress, and quality of life in patients with cardioverter defibrillator with or without cardiac resynchronization therapy. *Heart Vessels* 2014; **29**: 364–374.
- Thylén I, Dekker RL, Jaarsma T, Strömberg A, Moser DK. Characteristics associated with anxiety, depressive symptoms, and quality-of-life in a large cohort of implantable cardioverter defibrillator recipients. *J Psychosom Res* 2014; **77**: 122–127.
- Eifert GH. Cardiophobia: a paradigmatic behavioural model of heart-focused anxiety and non-anginal chest pain. *Behav Res Ther* 1992; **30**: 329–345.
- Eifert GH, Thompson RN, Zvolensky MJ, Edwards K, Frazer NL, Haddad JW, Davig J. The cardiac anxiety questionnaire: development and preliminary validity. *Behav Res Ther* 2000; **38**: 1039–1053.
- van Beek MH, Voshaar RC, van Deelen FM, van Balkom AJ, Pop G, Speckens AE. The cardiac anxiety questionnaire: cross-validation among cardiac inpatients. *Int J Psychiatry Med* 2012; **43**: 349–364.
- Lemon J, Edelman S, Kirkness A. Avoidance behaviors in patients with implantable cardioverter defibrillators. *Heart Lung* 2004; **33**: 176–182.
- Steinke EE, Gill-Hopple K, Valdez D, Wooster M. Sexual concerns and educational needs after an implantable cardioverter defibrillator. *Heart Lung* 2005; **34**: 299–308.
- Wedegärtner SM, Schwantke I, Kindermann I, Karbach J. Predictors of heart-focused anxiety in patients with stable heart failure. *J Affect Disord* 2020; **276**: 380–387.
- Mourad G, Alwin J, Strömberg A, Jaarsma T. Societal costs of non-cardiac chest pain compared with ischemic heart disease—a longitudinal study. *BMC Health Serv Res* 2013; **13**.
- van den Broek KC, Nyklíček I, Denollet J. Anxiety predicts poor perceived health in patients with an implantable defibrillator. *Psychosomatics* 2009; **50**: 483–492.
- Schulz SM, Ritter O, Zniva R, Nordbeck P, Wacker C, Jack M, Groschup G, Deneke T, Puppe F, Ertl G, Angermann C, Störk S, Pauli P. Efficacy of a web-based intervention for improving psychosocial well-being in patients with implantable cardioverter-defibrillators: the randomized controlled ICD. *Eur Heart J* 2020; **41**: 1203–1211.
- Hauptman PJ, Chibnall JT, Guild C, Armbrecht ES. Patient perceptions, physician communication, and the implantable cardioverter-defibrillator. *JAMA Int Med* 2013; **173**: 571–577.
- Wilkoﬀ BL, Fauchier L, Stiles MK, Morillo CA, Al-Khatib SM. 2015 HRS/EHRA/APHRS/SOLAECE expert consensus statement on optimal implantable cardioverter-defibrillator programming and testing. *J Arrhythm* 2016; **32**: 1–28.
- Bunz M, Lenski D, Wedegärtner S, Ukena C, Karbach J, Böhm M, Kindermann I. Heart-focused anxiety in patients with chronic heart failure before implantation of an implantable cardioverter defibrillator: baseline findings of the Anxiety-CHF Study. *Clin Res Cardiol* 2016; **105**: 216–224.
- Fischer D, Kindermann I, Karbach J, Herzberg PY, Ukena C, Barth C, Lenski M, Mahfoud F, Einsle F, Dannemann S, Böhm M, Köllner V. Heart-focused anxiety in the general population. *Clin Res Cardiol* 2012; **101**: 109–116.
- Zigmond AS, Snaith RP. The Hospital Anxiety and Depression Scale. *Acta Psychiatr Scand* 1983; **67**: 361–370.
- Bjelland I, Dahl A, Haug T, Neckelmann D. The validity of the Hospital Anxiety and Depression Scale. An updated literature review. *J Psychosom Res* 2002; **52**: 69–77.
- Rector T, Kubo S, Cohn J. Patients' self-assessment of their congestive heart failure. Part 2: content, reliability and validity of a new measure, the Minnesota Living with Heart Failure Questionnaire. *Heart Failure* 1987; **3**: 198–209.
- Behloul H, Feldman DE, Ducharme A, Frenette M, Giannetti N, Grondin F, Michel C, Sheppard R, Pilote L. Identifying relative cut-off scores with neural networks for interpretation of the Minnesota Living with Heart Failure questionnaire. *31st Annual Intern Conf IEEE* 2009.
- IBM Corporation. IBM SPSS Statistics for Windows. Version 25.0. Armonk, NY: IBM Corp; Released 2017.
- Hinz A, Brähler E. Normative values for the Hospital Anxiety and Depression Scale (HADS) in the general German population. *J Psychosom Res* 2011; **71**: 74–78.
- Rutledge T, Reis VA, Linke SE, Greenberg BH, Mills PJ. Depression in heart failure a meta-analytic review of prevalence, intervention effects, and associations with clinical outcomes. *J Am Coll Cardiol* 2006; **48**: 1527–1537.
- Sokoreli I, de Vries JJ, Pauws SC, Steyerberg EW. Depression and anxiety as predictors of mortality among heart failure patients: systematic review and meta-analysis. *Heart Fail Rev* 2016; **21**: 49–63.
- Hohls JK, Beer K, Arolt V, Haverkamp W, Kuhlmann SL, Martus P, Waltenberger J, Rieckmann N, Müller-Nordhorn J, Ströhle A. Association between heart-focused anxiety, depressive symptoms, health behaviors and healthcare utilization in patients with coronary heart disease. *J Psychosom Res* 2020; **131**: 109958.
- Wolf NJ, Hopko DR. Predicting the frequency, duration, and intensity of

- running behavior: the inhibitory effects of cardiac anxiety. *J Behav Anal Health Sports Fit Med* 2008; **1**: 45–53.
33. Kiuchi MG, Schlaich MP, Ho JK, Carnagarin R, Villacorta H. Lifestyle advice for patients with ICDs: physical activity—what is healthy and what is contraindicated. *EJ Cardiol Pract* 2019; **17**.
  34. Belardinelli R, Capestro F, Misiani A, Scipione P, Georgiou D. Moderate exercise training improves functional capacity, quality of life, and endothelium-dependent vasodilation in chronic heart failure patients with implantable cardioverter defibrillators and cardiac resynchronization therapy. *Eur J Cardiovasc Prev Rehabil* 2006; **13**: 818–825.
  35. Isaksen K, Munk PS, Giske R, Larsen AI. Effects of aerobic interval training on measures of anxiety, depression and quality of life in patients with ischaemic heart failure and an implantable cardioverter defibrillator: a prospective non-randomized trial. *J Rehabil Med* 2016; **48**: 300–306.
  36. Heidbüchel H, Corrado D, Biffi A, Hoffmann E, Panhuyzen-Goedkoop N, Hoogsteen J, Delise P, Hoff PI, Pelliccia A. Study Group on Sports Cardiology of the European Association for Cardiovascular Prevention and Rehabilitation. Position Paper. Recommendations for participation in leisure-time physical activity and competitive sports of patients with arrhythmias and potentially arrhythmogenic conditions Part II: ventricular arrhythmias, channelopathies and implantable defibrillators. *Eur J Cardiovasc Prev Rehabil* 2006; **13**: 676–686.
  37. Pelliccia A, Sharma S, Gati S, Bäck M, Börjesson M, Caselli S, Collet J-P, Corrado D, Drezner JA, Halle M, Hansen D, Heidbüchel H, Myers J, Niebauer J, Papadakis M, Piepoli MF, Prescott E, Roos-Hesselink JW, Stuart AG, Taylor RS, Thompson PD, Tiberi M, Vanhees L, Wilhelm M, ESC Scientific Document Group. 2020 ESC Guidelines on sports cardiology and exercise in patients with cardiovascular disease. *Eur Heart J* 2021; **42**: 17–96.
  38. Sweeting J, Ball K, McGaughran J, Atherton J, Semsarian C, Ingles J. Impact of the implantable cardioverter defibrillator on confidence to undertake physical activity in inherited heart disease: a cross-sectional study. *Eur J Cardiovasc Nurs* 2017; **16**: 742–752.
  39. Pandey A, Parashar A, Moore C, Ngo C, Salahuddin U, Bhargava M, Kumbhani DJ, Piccini JP, Fonarow GC, Berry JD. Safety and efficacy of exercise training in patients with an implantable cardioverter-defibrillator: a meta-analysis. *JACC Clin Electrophysiol* 2017; **3**: 117–126.
  40. Schulz SM, Massa C, Grzbiela A, Dengler W, Wiedemann G, Pauli P. Implantable cardioverter defibrillator shocks are prospective predictors of anxiety. *Heart Lung* 2013; **42**: 105–111.
  41. Perini PA, Kutayfa V, Veazie P, Daubert J, Schuger C, Zareba W, McNitt S, Rosero S, Tompkins C, Padeletti L, Moss AJ. Effects of implantable cardioverter/defibrillator shock and antitachycardia pacing on anxiety and quality of life: a MADIT-RIT substudy. *Am Heart J* 2017; **189**: 75–84.
  42. Priori SC, Blomström-Lundqvist C, Mazzanti A, Blom N, Borggrefe M, Camm J, Elliott PM, Fitzsimons D, Hatala R, Hindricks G, Kirchhof P, Kjeldsen K, Kuck K-H, Hernandez-Madrid A, Nikolaou N, Norekvål TM, Spaulding C, van Veldhuisen DJ, ESC Scientific Document Group. 2015 ESC Guidelines for the management of patients with ventricular arrhythmias and the prevention of sudden cardiac death: the Task Force for the Management of Patients with Ventricular Arrhythmias and the Prevention of Sudden Cardiac Death of the European Society of Cardiology (ESC). Endorsed by: Association for European Paediatric and Congenital Cardiology (AEPC). *Eur Heart J* 2015; **36**: 2793–2867.
  43. Frydensberg VS, Johansen JB, Möller S, Riahi S, Wehberg S, Haarbo J, Philbert BT, Jørgensen OD, Larsen ML, Nielsen JC, Pedersen SS. Anxiety and depression symptoms in Danish patients with an implantable cardioverter-defibrillator: prevalence and association with indication and sex up to 2 years of follow-up (data from the national DEFIB-WOMEN study). *EP Eur* 2020; **22**: 1830–1840 PMID: 33106878.
  44. Ng J, Sears SF, Exner DV, Reyes L, Cravetchi X, Cassidy P, Morton J, Lohrenz C, Low A, Sandhu RK, Sheldon RS, Raj SR. Age, sex, and remote monitoring differences in device acceptance for patients with implanted cardioverter defibrillators in Canada. *CJC Open* 2020; **2**: 483–489.
  45. Sola CL, Bostwick JM. Implantable cardioverter-defibrillators, induced anxiety, and quality of life. *Mayo Clin Proc* 2005; **80**: 232–237.
  46. Bundgaard JS, Thune JJ, Nielsen JC, Videbæk R, Haarbo J, Bruun NE, Videbæk L, Aagaard D, Korup E, Jensen G, Hildebrandt P, Steffensen FH, Eiskjær H, Brandes A, Thøgersen AM, Melchior TM, Pedersen OD, Gustafsson F, Egstrup K, Hassager C, Svendsen JH, Høfsten DE, Torp-Pedersen C, Pedersen SS, Pehrson S, Køber L, Mogensen UM. The impact of implantable cardioverter-defibrillator implantation on health-related quality of life in the DANISH trial. *EP Eur* 2019; **21**: 900–908.
  47. Chen S, Yin Y, Krucoff MW. Effect of cardiac resynchronization therapy and implantable cardioverter defibrillator on quality of life in patients with heart failure: a meta-analysis. *EP Eur* 2012; **14**: 1602–1607.
  48. Johansen JB, Pedersen SS, Spindler H, Andersen K, Nielsen JC, Mortensen PT. Symptomatic heart failure is the most important clinical correlate of impaired quality of life, anxiety, and depression in implantable cardioverter-defibrillator patients. *EP Eur* 2008; **10**: 545–551.
  49. Thomas SA, Friedmann E, Kao C-W, Inguito P, Metcalf M, Kelley FJ, Gottlieb SS. Quality of life and psychological status of patients with implantable cardioverter defibrillators. *Am J Crit Care* 2006; **15**: 389–398.