


RESEARCH ARTICLE

Open Access



The FATZO mouse, a next generation model of type 2 diabetes, develops NAFLD and NASH when fed a Western diet supplemented with fructose

Gao Sun^{1†} , Charles V. Jackson^{2†}, Karen Zimmerman², Li-Kun Zhang¹, Courtney M. Finnearty³, George E. Sandusky³, Guodong Zhang², Richard G. Peterson^{2*†} and Yi-Xin (Jim) Wang^{1*†}

Abstract

Background: Metabolic disorders such as insulin resistance, obesity, and hyperglycemia are prominent risk factors for the development of non-alcoholic fatty liver disease (NAFLD)/steatohepatitis (NASH). Dietary rodent models employ high fat, high cholesterol, high fructose, methionine/choline deficient diets or combinations of these to induce NAFLD/NASH. The FATZO mice spontaneously develop the above metabolic disorders and type 2 diabetes (T2D) when fed with a normal chow diet. The aim of the present study was to determine if FATZO mice fed a high fat and fructose diet would exacerbate the progression of NAFLD/NASH.

Methods: Male FATZO mice at the age of 8 weeks were fed with high fat Western diet (D12079B) supplemented with 5% fructose in the drinking water (WDF) for the duration of 20 weeks. The body weight, whole body fat content, serum lipid profiles and liver function markers were examined monthly along with the assessment of liver histology for the development of NASH. In addition, the effects of obeticholic acid (OCA, 30 mg/kg, QD) on improvement of NASH progression in the model were evaluated.

Results: Compared to normal control diet (CD), FATZO mice fed with WDF were heavier with higher body fat measured by qNMR, hypercholesterolemia and had progressive elevations in AST (~ 6 fold), ALT (~ 6 fold), liver over body weight (~ 2 fold) and liver triglyceride (TG) content (1.4–2.9 fold). Histological examination displayed evidence of NAFLD/NASH, including hepatic steatosis, lobular inflammation, ballooning and fibrosis in FATZO mice fed WDF. Treatment with OCA for 15 weeks in FATZO mice on WDF significantly alleviated hypercholesterolemia and elevation of AST/ALT, reduced liver weight and liver TG contents, attenuated hepatic ballooning, but did not affect body weight and blood TG levels.

Conclusion: WDF fed FATZO mice represent a new model for the study of progressive NAFLD/NASH with concurrent metabolic dysregulation.

Keywords: Metabolic disease, Liver disease, NAFLD, NASH, FATZO mouse

* Correspondence: rpeterson@crownbio.com; yxwang@crownbio.com

[†]Gao Sun, Charles V. Jackson, Richard G. Peterson and Yi-Xin (Jim) Wang are contributed equally to this work.

²Crown Bioscience Indiana Inc, Indianapolis, USA

¹Crown Bioscience Taicang Inc, Taicang, China

Full list of author information is available at the end of the article



Introduction

Non-alcoholic fatty liver disease (NAFLD) is an all-encompassing term used to describe the fatty liver environment in the absence of excessive alcohol consumption. It is estimated that 25% of the world's general population meet the criteria for a diagnosis of NAFLD [1–3]. Metabolic disturbances are prominent risk factors for the development of NAFLD [3–10]. NAFLD with concurrent obesity, insulin resistance and hyperlipidemia is associated with an increased risk of progression of NAFLD to NASH. However, whether NAFLD develops prior to or as a result of metabolic dysregulation is unknown and debated [11–14].

The initial stage of NAFLD is characterized by the accumulation of ectopic fat in hepatocytes (steatosis). Steatosis is generally a benign, asymptomatic condition; however, with concurrent obesity/metabolic disturbances, steatosis can progress to non-alcoholic steatohepatitis (NASH) and in severe cases hepatocellular carcinoma (HCC) and liver failure [15]. Histologically NASH is characterized by hepatocellular ballooning, inflammation and increased liver fibrosis [16–18]. In the context of insulin resistance, obesity and dyslipidemia, an inflammatory response is initiated which is thought to be causative in the progression of NAFLD to more severe NASH [3, 6, 7, 19]. Unlike benign steatosis, NASH represents a significant health threat that progresses to fibrosis/cirrhosis in 10–28% of patients [12, 20–23]. Further progression from NASH to fibrosis/cirrhosis is highly predictive of mortality in these patients [24].

The study of human NAFLD and its progression is hampered by the slow (decades) development of disease as well as tools available for staging the disease [3]. While much research is ongoing to identify non-invasive tools for staging and reliable clinical biomarkers are not yet available, biopsy remains the gold standard. Thus attempts have been made to develop rodent models of fatty liver disease to aid in the investigation of the pathophysiological and morphological findings characteristic of NAFLD. As metabolic syndrome is the most prominent risk factor for the development of NAFLD in humans, the ideal animal model should develop NAFLD in the context of metabolic disease. Furthermore, the model should display histological characteristics such as steatosis, interlobular inflammation, hepatocellular ballooning, fibrosis and be susceptible to liver tumors seen in humans [12].

Over the last several years, investigators have taken different approaches to developing mouse models of NAFLD and NASH; methionine-choline deficient (MCD) diet [25], high fat diets with or without fructose in C57BL/6J and *ob/ob* mice [26–29] and the STAM model where 4dayold mice are given streptozotocin plus high fat diet [30, 31]. Initial attention has been placed on

producing fibrosis as quickly as possible with MCD diet [27]. The mice on the MCD diet are not obese, actually losing significant body weight (30%), and are not insulin resistant or hyperlipidemia during disease progression [25]. The STAM model is characterized by type 1 diabetes induced with streptozotocin, rather than type 2 diabetes (T2D) on a high fat diet and produces fibrosis after 12 weeks on diet and eventually HCC [30, 31]. Streptozotocin, a known carcinogen, could exacerbate the development of HCC in this model. In C57BL/6 and *Lep^{ob}/Lep^{ob}* models using high fat diets either alone or supplemented with fructose, investigators have observed NAFLD and NASH in the presence of insulin [26, 32–34].

The FATZO mouse was developed by crossing C57BL/6J and AKR/J mice that have a strong propensity to develop obesity when fed a high fat diet. Selective inbreeding of the offspring resulted in animals that have a strong propensity to develop many of the characteristics of “metabolic syndrome” early in life [35, 36]. Thus FATZO mice have a strong genetic pre-disposition towards obesity and develop insulin resistance, dyslipidemia, and obesity when fed a normal chow diet [35, 36].

Excess consumption of fructose has been shown to promote liver steatosis and fibrosis in humans [37–39] and normal rodents [40–42]. Therefore, we hypothesized that the pre-disposition for metabolic disruptions in the FATZO mice in conjunction with feeding of the WDF diet with fructose supplementation would generate a more translational model of NAFLD/NASH with characterization that resembles the progression of human disease. Thus, the aims of the present study were to examine 1) if FATZO mice fed WDF develop NAFLD/NASH similar to the pathologic changes in human; and 2) if obeticholic acid (OCA) treatment, one of the most advanced NASH specific drug in clinical trial, is able to improve liver function as well as morphological changes in the liver of FATZO mice fed WDF.

Methods

Animal studies

Male FATZO/*Pco* mice ($n = 88$) were bred and maintained at the Crown Bioscience facility (Indianapolis, IN). Animals were housed individually in open ventilated cages and fed control diet of Purina 5008 chow (LabDiet, St. Louis, MO) with distilled water ad libitum until study started. Room temperature was monitored and maintained at 20–26 °C with the light cycle set at 12 h (6:00–18:00). Mice at 8 weeks of age were randomized into different study groups based on body weight and serum ALT.

Effects of WDF on FATZO mice

In the first study for model characterization, animals were randomized into 2 groups fed with control diet (CD) ($n = 32$); or Western diet (D12079B, Research

Diets, New Brunswick, NJ) + 5% fructose in the drinking water (WDF) ($n = 32$). Body weights were recorded weekly. Whole body fat content (%) was assessed using qNMR (EchoMRI-500; Houston, TX). Eight animals from each group were sacrificed every month for the duration of the study.

Effects of OCA in FATZO mice fed WDF

In the second study, all of FATZO mice were fed WDF at age 8 weeks for 8 weeks, then randomized into vehicle ($n = 8$) and OCA (30 mg/kg, p.o.QD, $n = 8$) groups for an additional 15 weeks on WDF. Previous studies have shown that to achieve significant differences between groups given the standard deviations of biochemical parameters, eight animals per group will be sufficient.

At the end of the studies, all mice were euthanized by neck dislocation, and blood samples and liver tissues were collected for examination. All animal experiments were approved by the Institutional Animal Care and Use Committee at Crown Bioscience – Indiana (IACUC protocol number: 2015–230).

Biochemical measurements

Mice were fasted (6 h) prior to sacrifice and serum samples were obtained for clinical chemistry analysis including cholesterol, triglycerides, AST and ALT (AU480 clinical analyzer, Beckman-Coulter; Brea, CA).

Liver triglyceride content was analyzed from samples (~ 200 mg/animal) snap frozen in liquid nitrogen. Tissues were placed in Lysing Matrix D Tubes with distilled water in a 20% concentration (MP Biomedicals, Santa Anna, CA) and homogenized in a Fastprep-FP120 cell disrupter (Thermo Fisher Savant) for 30 s. Homogenates were kept cold and analyzed on a clinical analyzer (Beckman-Coulter AU480, Indianapolis, IN) within 30 min of preparation.

Histology

Tissue processing

The liver tissues were fixed in 10% neutral buffered formalin (NBF) for 24 h followed by baths of standard concentrations of alcohol then xylene to prepare the tissues for paraffin embedding. After being embedded in paraffin and cooled, five-micron sections were cut and stained for routine H&E and Picro Sirius Red (PSR).

Whole slide digital imaging

A whole slide digital imaging system was used for imaging with the Aperio Scan Scope CS system (360 Park Center Drive, Vista, CA). The system imaged all slides at 20x. The scan time ranged from 1.5 to a maximum time of 2.25 min.

NAFLD activity score (NAS) and fibrosis scoring

The liver samples were evaluated by a trained general pathologist who is blind of different study groups using the NASH liver criteria for scoring [16–18]. Steatosis, lobular inflammation, hepatocyte balloon degeneration, fibrosis, NAS and the presence of NASH by pattern recognition were systematically assessed. Three representative areas per liver were assessed and the score of each parameter of individual animal was calculated by averaging scores from three representative areas [43].

Statistics

Treatment effects of WDF were compared to CD over the time points using One-Way or Repeat Measures ANOVA with multiple comparison t-test using Prism (GraphPad, version 7.01). Statistical differences were denoted as $p < 0.05$. All values are reported as Mean \pm SEM; unless noted otherwise.

Results

WDF exacerbated metabolic disorders, impaired liver function and caused histological changes resembling NAFLD/NASH in FATZO mice

The FATZO mice fed WDF showed a significantly greater increase in body weight (Fig. 1a), associated with a significant increase in body fat compared to the age-matched CD fed mice (Fig. 1b). Blood cholesterol levels were almost 2.5 times higher in WDF group than CD controls after 4 weeks on diet and the levels were consistently higher in WDF group throughout the diet induction period (Fig. 1c), though triglyceride levels were slightly lower (Fig. 1d) in the WDF group.

Metabolic stress on the livers of FATZO mice fed WDF caused a significant elevation in the liver enzymes, with evidence of almost 6 and 4 fold higher in ALT (Fig. 1e) and AST (Fig. 1f) levels respectively over the 20 weeks of diet exposure compared to that in CD fed mice. The liver over body weight significantly increased over time (Fig. 1g), accompanied by a significantly higher liver TG content measured at weeks 12–20 from mice fed WDF compared to that of CD (Fig. 1h).

WDF fed FATZO mice developed fatty liver characterized by progressive steatosis, hepatocellular ballooning, lobular inflammation and the early stages of fibrosis. During the early progression of NAFLD, the livers from WDF fed FATZO mice were very pale in color upon necropsy compared to that of CD fed mice (Fig. 2). H&E staining demonstrated pan lobular steatosis with ballooning as early as 4 weeks on WDF compared to CD diet. Over time, FATZO mice exhibited a progressive worsening of NAFLD. At each time point, the livers of WDF fed mice were paler in color than the corresponding CD fed ones. Significant histological changes

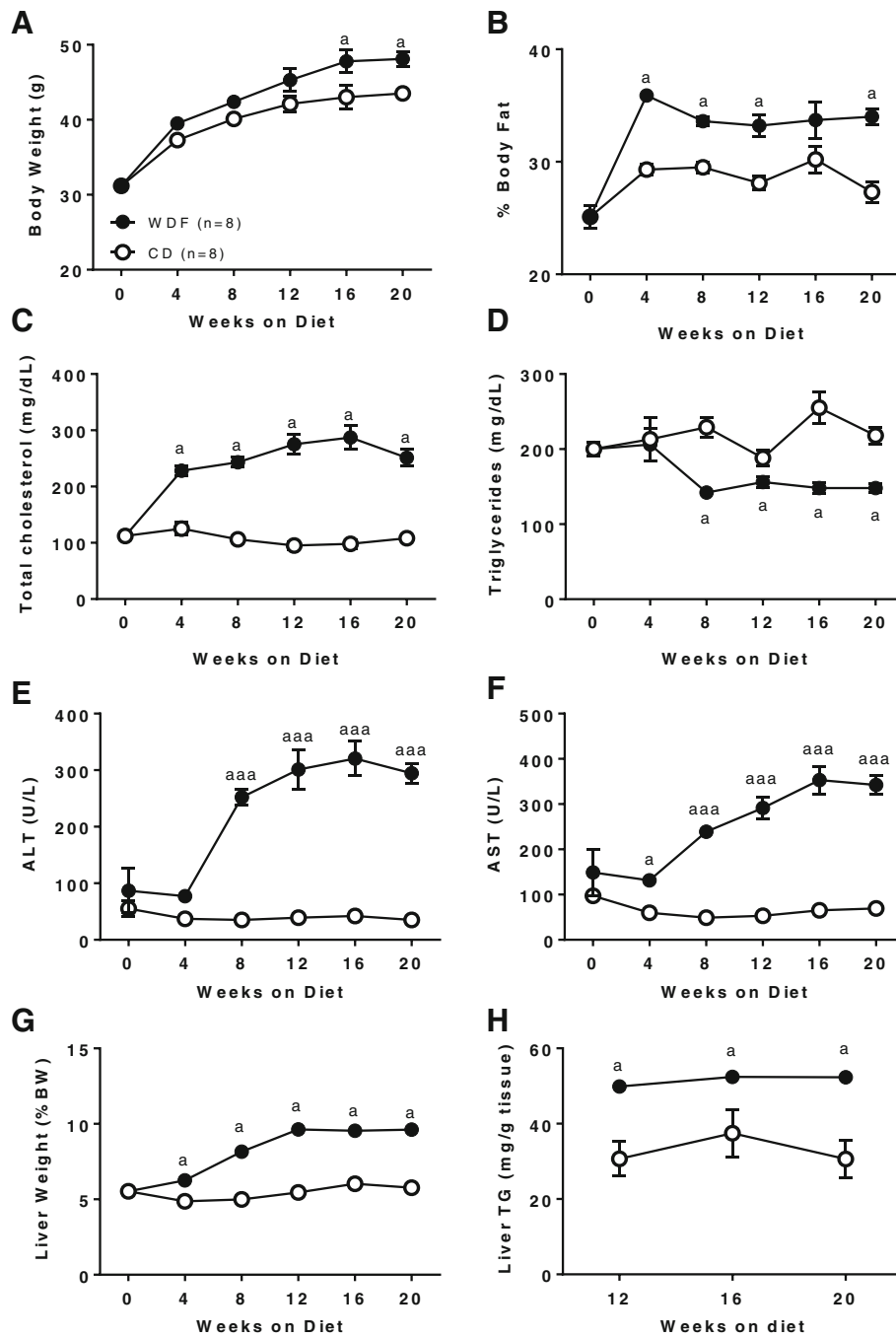


Fig. 1 Development of NAFLD/NASH in FATZO mice fed with CD or WDF diet. (a) Body weight, (b) body fat, (c) total cholesterol, (d) triglyceride, (e) ALT, (f) AST, (g) liver weight, and (h) hepatic triglyceride content in FATZO mice fed with CD or WDF for 20 weeks. Data were presented as mean ± SEM. ^a*p* < 0.05, ^{aaa}*p* < 0.005 vs vehicle controls using two-way ANOVA with Dunnett's post-hoc comparison

indicative of NASH (steatosis, hepatocellular ballooning, lobular inflammation and mild fibrosis) were seen in the liver sections from the mice on WDF for 16 weeks (Fig. 2).

When sections were assessed for individual NASH activity scores, the livers from WDF fed mice exhibited significantly higher scores for steatosis (Fig. 3a),

hepatocellular ballooning (Fig. 3b), lobular inflammation (Fig. 3c) and fibrosis (Fig. 3d) when compared to the corresponding livers from the CD fed mice. When measured by a composite NAFLD activity score (NAS), the livers from WDF fed mice demonstrated significantly more pathological findings when compared to the livers from CD fed mice (Fig. 3E).

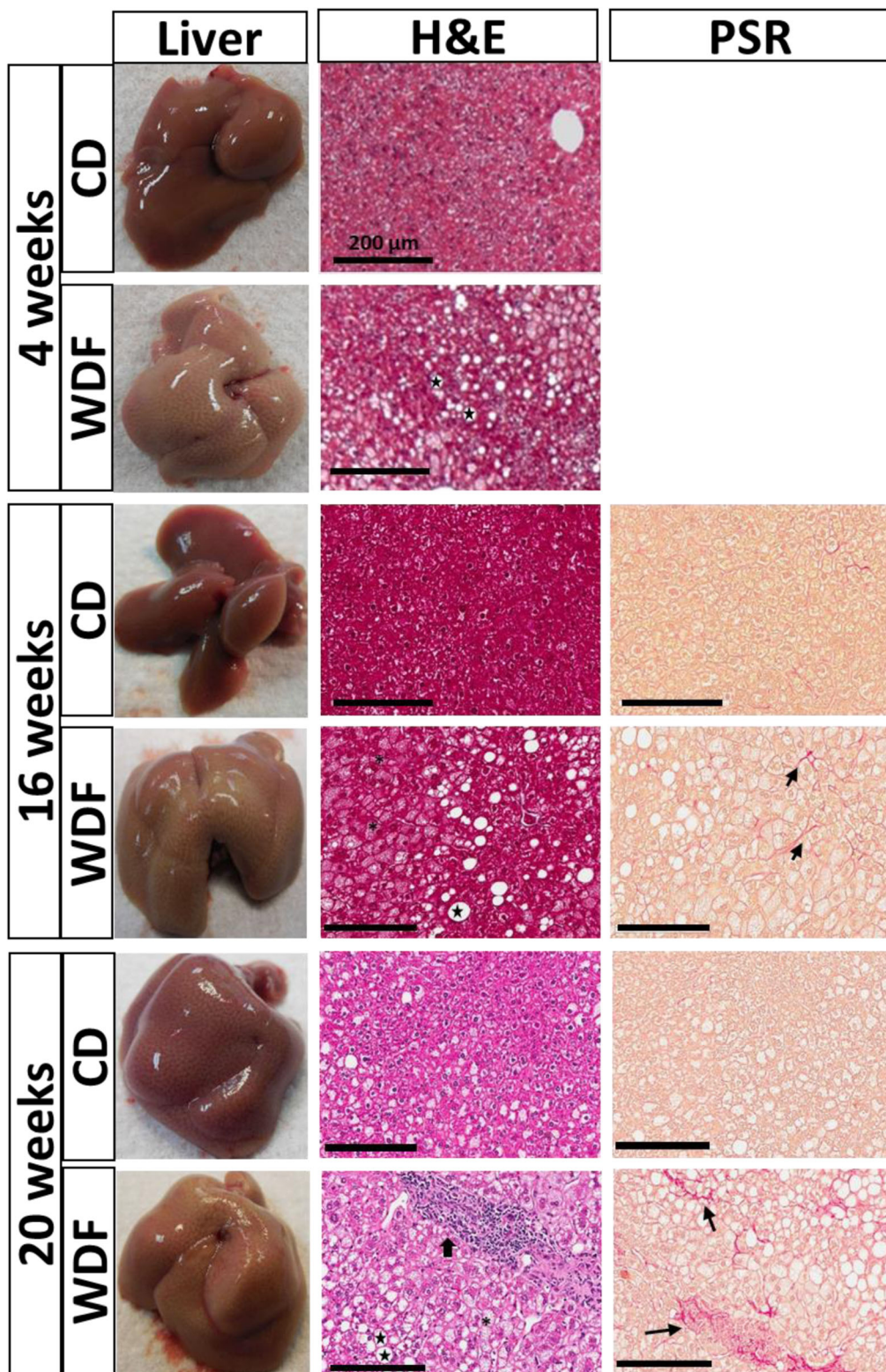


Fig. 2 Histological evidence of NAFLD/NASH in FATZO mice fed WDF. Representative images of H&E and Picro Sirius Red (PSR) staining of livers removed from FATZO mice fed WDF or CD for 4, 16 and 20 weeks. ★ Denotes steatosis, * denotes ballooning, ↑ denotes lobular inflammation and ↓ denotes fibrosis

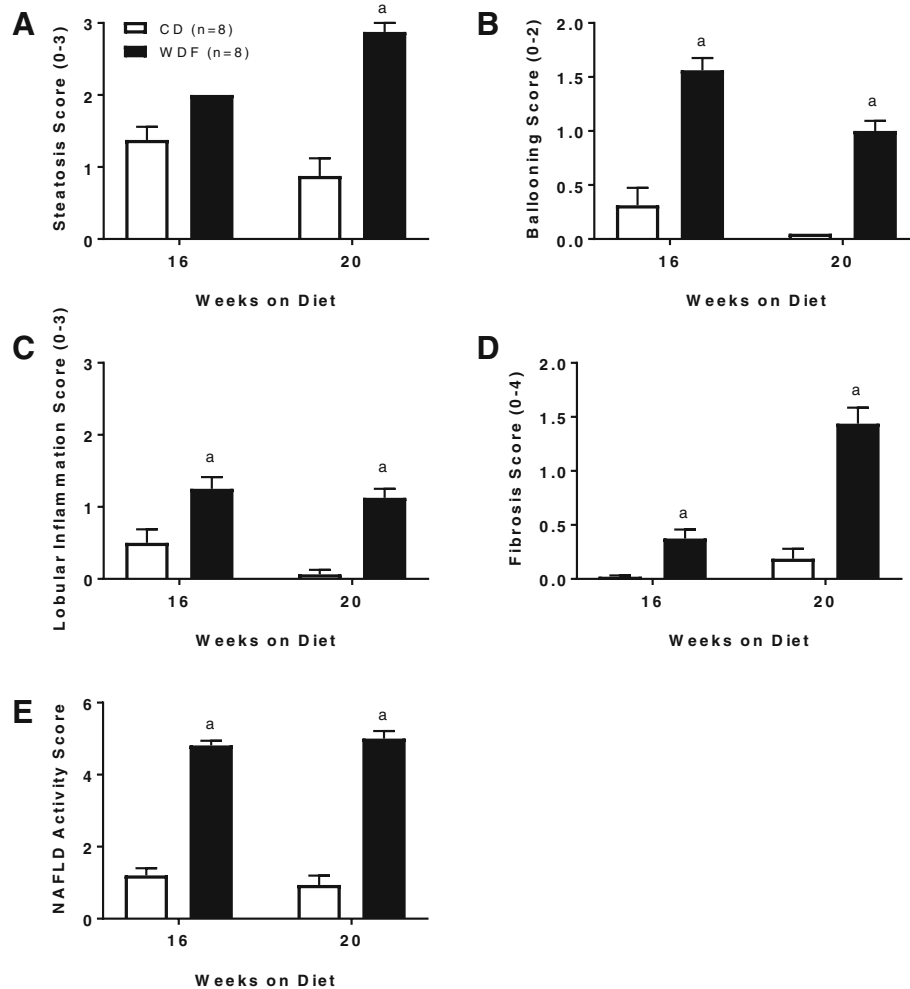


Fig. 3 NASH scoring of the liver from WDF or CD fed FATZO mice for 16 and 20 weeks. **(a)** Steatosis, **(b)** hepatic ballooning, **(c)** lobular inflammation, **(d)** Fibrosis and **(e)** NAS scores. Data were presented as mean \pm SEM. ^a $p < 0.05$ vs vehicle controls using two-way ANOVA with Dunnett's post-hoc comparison

OCA improved liver function and hepatic ballooning in FATZO mice fed WDF

Treatment of OCA (30 mg/kg, QD) in FATZO mice on WDF from 8 weeks on diet for additional 15 weeks had no impact on body weight (Fig. 4a) or blood TG levels (Fig. 4b). In contrast, OCA treatment alleviated the elevation of blood total cholesterol (Fig. 4c) and LDL (Fig. 4d), resulting in significantly lower levels compared to vehicle controls. In addition, improvement in liver function could be seen as early as 4 weeks after OCA treatment, as blood ALT (Fig. 4e) and AST (Fig. 4f) levels in the OCA treatment group were dramatically lower than its own pretreatment baseline as well as the CD fed mice. After treatment with OCA for 15 weeks, liver over body weight (Fig. 4g) and hepatic TG levels decreased significantly compared to the vehicle controls (Fig. 4h).

When liver histology was evaluated (Fig. 5), OCA treatment tended to improve NAS score (Fig. 6e) with

significant alleviation in numbers of foci showing hepatic ballooning (Fig. 6b). The changes in other components of NAS score, such as steatosis (Fig. 6a), lobular inflammation (Fig. 6c), and fibrosis (Fig. 6d) were not obvious.

Discussion

Currently, the global hypothesis for the pathogenesis of NASH is the "multi-hit hypothesis," with metabolic syndrome playing a major role, due to insulin resistance followed by pro-inflammatory processes. Unlike monogenic leptin deficient *ob/ob* or *db/db* mice, the FATZO mice are a polygenic model of obesity and type 2 diabetes when fed regular rodent diet, with an intact leptin pathway, thereby making it more translatable to the human disease [35, 36]. The goal of the present investigation was to determine if the FATZO mice, which inherently develop metabolic syndrome and type 2 diabetes, would develop NAFLD and NASH when fed a western diet supplemented with fructose.

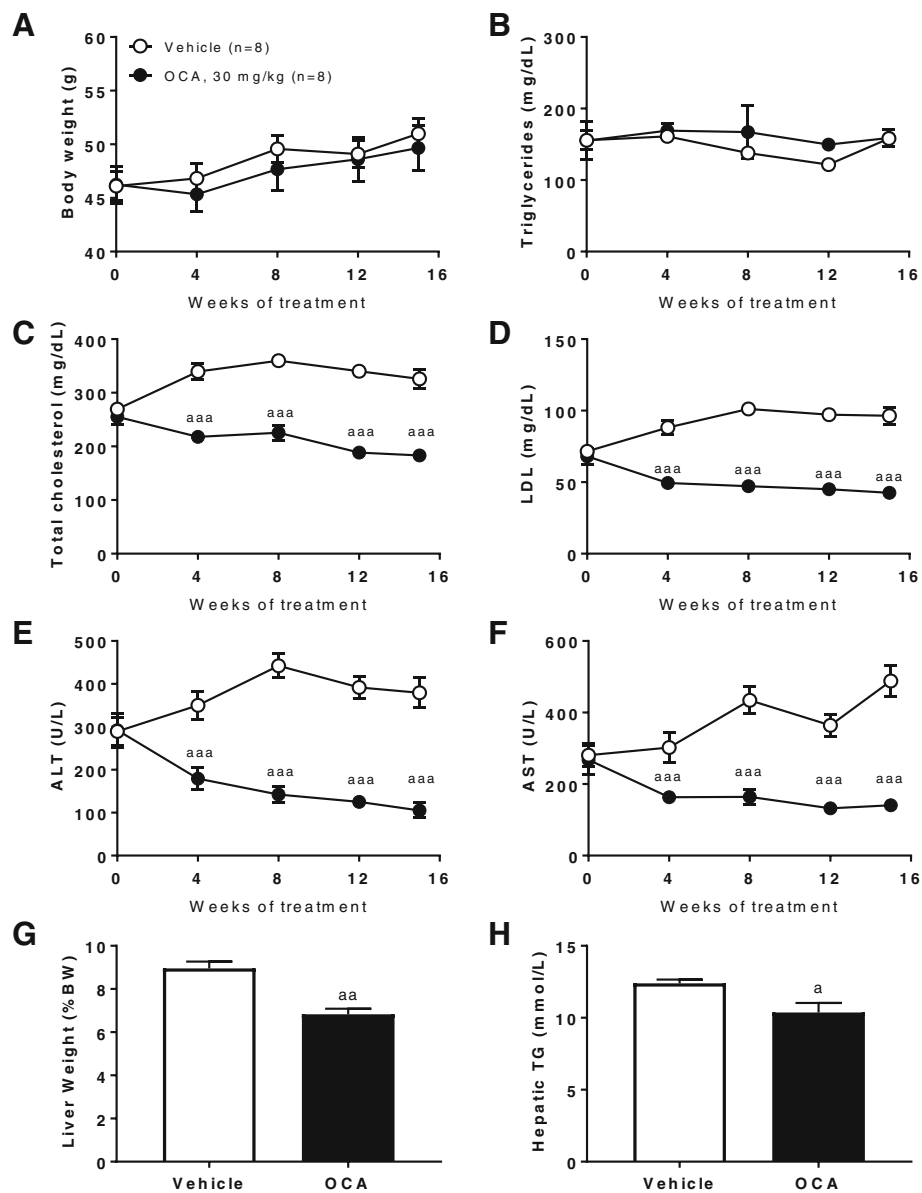


Fig. 4 OCA treatment improves liver function and lipid metabolism in FATZO mice fed WDF. (a) Body weight, (b) blood triglyceride, (c) total cholesterol, (d) LDL, (e) ALT, (f) AST, (g) liver weight, and (h) hepatic triglyceride content in WDF fed FATZO mice treated with vehicle or OCA (30 mg/kg, QD). Data were presented as mean \pm SEM. ^a $p < 0.05$, ^{aa} $p < 0.01$, ^{aaa} $p < 0.005$ vs vehicle controls using two-way ANOVA with Dunnett's post hoc comparison (a-f) or unpaired student t-test (g, h)

In recent reviews [12, 44], the murine models that most closely resembled the human disease, were those that used high fat diets supplemented with fructose. These diets best simulate the high prevalence of high fat food and corn syrup sweetened beverages in the Western diet. Fructose has been shown to enhance the development of NAFLD and NASH without [29], or with fibrosis in C57BL/6 [26, 28, 34, 45], *ob/ob* [28, 34] and DIAMOND™ [32] mice on high fat diets.

In the present investigation, FATZO mice fed WDF diet developed NAFLD and NASH with progressive

steatosis, ballooning, inflammation and mild fibrosis over 20 weeks when compared to the CD. In the plasma, increases in the liver enzymes, ALT/AST, and cholesterol were observed in FATZO mice on WDF diet for as early as 4 weeks and remained significantly higher compared to the values from the mice on CD over 20 weeks. Plasma triglycerides were not elevated in WDF fed animals when compared to CD, which is consistent with reports in the *ob/ob* NASH models [28, 34]. However, liver triglycerides were elevated 1.4–2.9 folds at 12, 16 and 20 weeks in mice fed WDF compared to CD. On

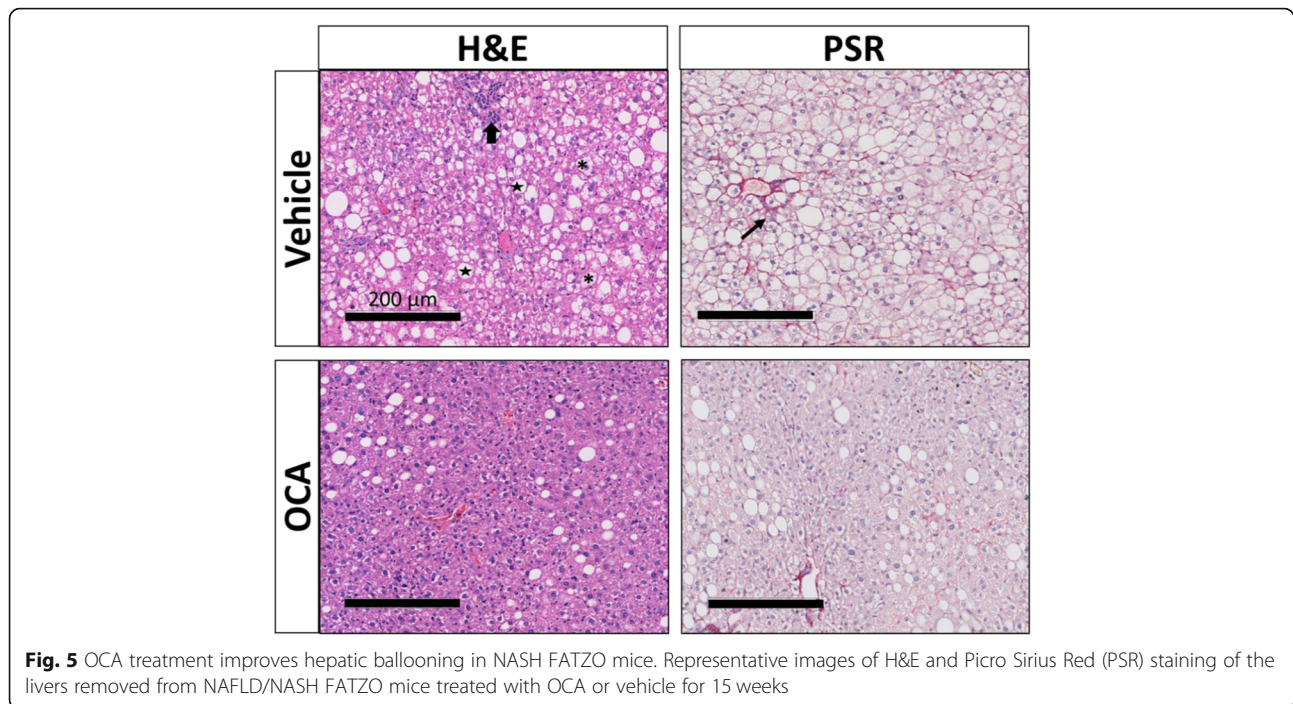


Fig. 5 OCA treatment improves hepatic ballooning in NASH FATZO mice. Representative images of H&E and Picro Sirius Red (PSR) staining of the livers removed from NAFLD/NASH FATZO mice treated with OCA or vehicle for 15 weeks

gross necropsy, the livers from WDF fed mice were pale in color and had significantly higher liver over body weight ratios when compared to the corresponding CD fed group. Histologically, the livers from WDF fed mice presented steatosis as early as 4 weeks on diet which progressed to steatohepatitis characterized by balloon degeneration, lobular inflammation and fibrosis. The composite NAS score in the FATZO mice fed WDF was equivalent to “~ 5” at 16 and 20 weeks on diet; indicative of “definitive” NASH [17, 18]. Mild fibrosis was observed as early as 16 weeks on diet in 50% of WDF fed mice and progressed to 100% of animals demonstrating moderate fibrosis scores of 1.5 at 20 weeks.

Recently, Machado et al. reported that the models with Western diet developed a more common and relatively non-progressive subtype of NASH, whereas MCD diet model developed a less common and more rapidly progressive/aggressive NASH subtype [25]. The main differences between the 2 models are significant in regards to which more closely mimics the human condition. Western diet fed animals are obese, insulin resistant and hyperlipidemia whereas the MCD diet fed animals had weight loss, but are not insulin resistant or hyperlipidemia [25]. FATZO mice on WDF benefit with progressive NASH phenotypes, increased body weight and hyperlipidemia. More recently, when 22% fructose and trans-fat are added to the Western diet, *ob/ob* mice develop steatosis, lobular inflammation and mild fibrosis similar to FATZO mice on WDF [28, 34]. However, compared to FATZO mice on the WDF, the hepatic ballooning was not present in the *ob/ob* mice on Western

diet via the same length of diet induction [28]. More importantly, the use of *ob/ob* mice with intrinsic leptin deficiency in the metabolic disease should always be cautious, as the involvement of leptin in multiple metabolic signaling pathways should not be overlooked. As a result, the appearance of NASH phenotypes in the models with gene mutations might not fully reflect the actual disease pathogenesis, which might create concerns for the model to be used in testing anti-NASH therapy. Compared to other rodent NASH models where animals with intrinsic gene mutation (eg: *ob/ob* mice) or chemical induction, FATZO mice have more physiological relevance to human patients with metabolic syndromes, while maintaining critical biochemical and histopathological changes of phenotypes representative of NASH by applying the common risk factor of inducing NASH such as fructose.

The diet induced obesity (DIO) model in C57BL/6J mice also present liver TG accumulation and hepatic steatoses, however, unlike the FATZO mice, C57BL/6J mice are not diabetic, and develop less severe liver histopathologic changes.

Multiple drugs are in the development stage for treatment of NASH. Obeticholic acid (OCA) is a semi-synthetic bile acid that acts on the nuclear farnesoid X receptor (FXR) which is expressed predominantly in the liver, kidney and intestine to regulate bile acid homeostasis, hepatic lipid metabolism and immune function [46, 47]. It was originally developed for the treatment of primary biliary cholangitis [48] and is currently in the most advanced stage being tested for NASH

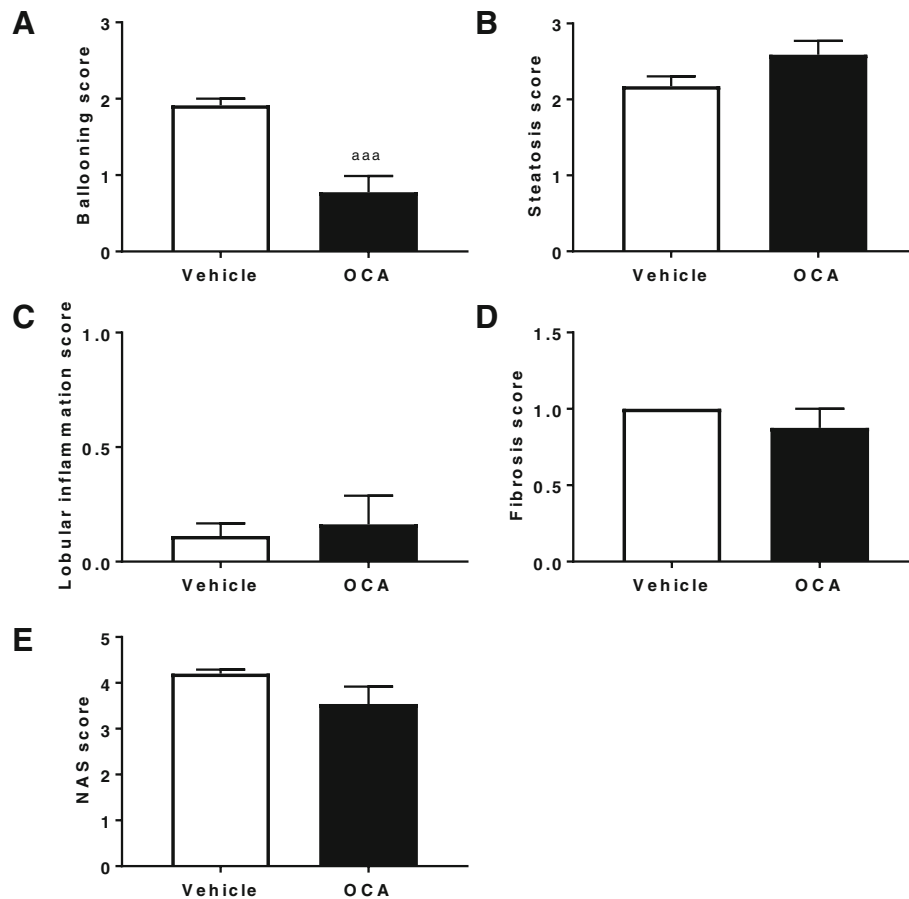


Fig. 6 Histological improvement of WDF fed FATZO mice treated with OCA. (a) Hepatic ballooning, (b) Steatosis, (c) Lobular inflammation, (d) Fibrosis and (e) NAS score. Data were presented as mean \pm SEM. ^{aaa} $p < 0.005$ vs vehicle controls, using unpaired student t-test

in several clinical trials with evidence of significant alleviation of plasma liver ALT and AST levels and mild improvement in steatosis, hepatic ballooning, lobular inflammation and fibrosis [49]. In pre-clinical rodent studies, OCA has been shown to reduce hepatic lipid accumulation, liver enzyme activities, steatosis and fibrosis, though the models and dosing regimen selected might largely affect the final manifestation of the drug efficacy [50, 51]. FATZO mice which possess aberrant lipid metabolism develop advanced NASH phenotypes upon WD feeding. The development of the phenotypes was largely accelerated by the impact of fructose on hepatic lipid metabolism including lipogenesis and reduced fatty acid oxidation. The treatment of FATZO mice with OCA is likely to reduce such impact by inhibiting lipogenesis and fatty acid synthesis. Indeed, in the present study in FATZO mice on WDF for 8 weeks, OCA treatment for 15 weeks significantly reduced plasma ALT and AST levels almost to baseline values before WDF induction (Fig. 4e and e). This result is consistent with the report from NASH patients treated with OCA [49]. In addition, treatment of OCA for 8 weeks appeared to be more efficacious

in reducing liver enzymes in FATZO fed WDF compared to *ob/ob* mice fed with AMLN diet, where impacts of OCA on plasma liver enzymes in the latter model were minimal [51]. Moreover, OCA treatment improved hepatic ballooning leading to overall reduction in NAS score and increased the numbers of animals with absence of fibrosis in WDF fed FATZO mice (Fig. 5 and 6). The data suggested that the leading anti-NASH treatment OCA can improve NASH phenotypes in FATZO mice fed with WDF similar as seen in human patients. More importantly, some of the known effects of OCA such as reducing liver enzyme ALT in NASH patients which were not shown in *ob/ob* mice were also evident in FATZO model, suggesting more clinical relevance of the model. Therefore, FATZO mice fed with WDF develop NAFLD/NASH phenotypes in a time frame that might be suitable for testing anti-NASH drug intervention.

Conclusion

In the present investigation, the polygenic FATZO mouse model of obesity and type 2 diabetes with an intact leptin pathway diet developed progressive NAFLD/

NASH similar to humans when fed with WDF. The FATZO WDF model of NAFLD/NASH represents a new and improved scientific tool for the advancement of NAFLD/NASH research which is potentially more translatable to human disease than many other models.

Based on the results of this study, other previously published studies and for a better description of model, the common name of this model will be subsequently changed from FATZO/Pco to MS-NASH/PcoJ and as such will be marketed through Jackson Labs.

Abbreviations

ALT: Alanine aminotransferase; AST: Aspartate transaminase; BW: Body weight; CD: Control diet; FXR: Farnesoid X nuclear receptor; H&E: Hematoxylin and eosin; HCC: Hepatocellular carcinoma; LDL: Low density lipoprotein; MCD: Methionine-choline deficient; NAFLD: Non-alcoholic fatty liver disease; NAS: NAFLD activity score; NASH: Non-alcoholic steatohepatitis; NBF: Neutral buffered formalin; NMR: Nuclear magnetic resonance; OCA: Obeticholic acid; PSR: Picrosirius red; QD: Quaque die; T2D: Type 2 diabetes; TC: Total cholesterol; WDF: Western diet with fructose

Acknowledgements

The authors gratefully acknowledge Anita Tepoch, Kathy Coy, Kimberly Brown and Melissa Bass for their technical assistance in the conduct of the experiments, and Dr. Keith Condon for embedding, sectioning and staining the liver sections for the histological assessment.

Funding

Not applicable.

Availability of data and materials

The datasets generated and analyzed during the current study are not publicly available due to potential commercial misuse but are available from the corresponding author on reasonable request.

Author's contributions

GS and CVJ designed, performed the experiments, analyzed the data and wrote the paper. LZ, CMF and GES performed the histological evaluation; KZ, GZ, RGP and YW participated in the discussion of the data and paper writing. All authors have read and approved the manuscript.

Ethics approval

All animal experiments in the study were approved by the Institutional Animal Care and Use Committee at Crown Bioscience – Indiana (IACUC protocol number: 2015–230).

Consent for publication

Not applicable.

Competing interests

The authors declare that they have no competing interests.

Publisher's Note

Springer Nature remains neutral with regard to jurisdictional claims in published maps and institutional affiliations.

Author details

¹Crown Bioscience Taicang Inc, Taicang, China. ²Crown Bioscience Indiana Inc, Indianapolis, USA. ³Department of Pathology and Laboratory Medicine, Indiana University School of Medicine, Indianapolis, Indiana, USA.

Received: 3 July 2018 Accepted: 27 February 2019

Published online: 18 March 2019

References

- Mohan V, Farooq S, Deepa M, Ravikumar R, Pitchumoni CS. Prevalence of non-alcoholic fatty liver disease in urban south Indians in relation to

- different grades of glucose intolerance and metabolic syndrome. *Diabetes Res Clin Pract.* 2009;84:84–91.
- Riordan JD, Nadeau JH. Modeling progressive non-alcoholic fatty liver disease in the laboratory mouse. *Mamm Genome.* 2014;25:473–86.
- Satapathy SK, Sanyal AJ. Epidemiology and natural history of nonalcoholic fatty liver disease. *Semin Liver Dis.* 2015;35:221–35.
- Kanwar P, Nelson JE, Yates K, Kleiner DE, Unalp-Arida A, Kowdley KV Association between metabolic syndrome and liver histology among NAFLD patients without diabetes. *BMJ Open Gastroenterol.* 3:e000114.
- Rector RS, Thyfault JP, Wei Y, Ibdah JA. Non-alcoholic fatty liver disease and the metabolic syndrome: an update. *World J Gastroenterol.* 2008;14:185–92.
- Caligiuri A, Gentilini A, Marra F. Molecular pathogenesis of NASH. *Int J Mol Sci.* 2016;17(9):1575.
- Vernon G, Baranova A, Younossi ZM. Systematic review: the epidemiology and natural history of non-alcoholic fatty liver disease and non-alcoholic steatohepatitis in adults. *Aliment Pharmacol Ther.* 2011;34:274–85.
- Byrne CD, Olufadi R, Bruce KD, Cagampang FR, Ahmed MH. Metabolic disturbances in non-alcoholic fatty liver disease. *Clin Sci (Lond).* 2009;116:539–64.
- Kosmidou M, Milionis H. Diabetes mellitus and non-alcoholic fatty liver disease: the thread of Ariadne. *Minerva Endocrinol.* 2016;42:109–21.
- Marchesini G, Bugianesi E, Forlani G, et al. Nonalcoholic fatty liver, steatohepatitis, and the metabolic syndrome. *Hepatology.* 2003;37:917–23.
- Byrne CD. Ectopic fat, insulin resistance and non-alcoholic fatty liver disease. *Proc Nutr Soc.* 2014;72:412–9.
- Sanchez SC, Ramalho LN, Augusto MJ, da Silva DM, Ramalho FS. Nonalcoholic steatohepatitis: a search for factual animal models. *Biomed Res Int.* 2015:574832.
- Ballestri S, Zona S, Targher G, et al. Nonalcoholic fatty liver disease is associated with an almost two fold increased risk of incident type 2 diabetes and metabolic syndrome. Evidence from a systematic review and meta-analysis. *J Gastroenterol Hepatol.* 2016;31:936–44.
- Vanni E, Bugianesi E, Kotronen A, De Minicis S, Yki-Jarvinen H, Svegiati-Baroni G. From the metabolic syndrome to NAFLD or vice versa? *Dig Liver Dis.* 2010;42:320–30.
- Kim CH, Younossi ZM. Nonalcoholic fatty liver disease: a manifestation of the metabolic syndrome. *Cleve Clin J Med.* 2008;75:721–8.
- Brunt EM (2007) Pathology of fatty liver disease. *Mod Pathol* 20 Suppl 1:S40–S48.
- Juluri R, Vuppalanchi R, Olson J, et al. Generalizability of the nonalcoholic steatohepatitis clinical research network histologic scoring system for nonalcoholic fatty liver disease. *J Clin Gastroenterol.* 2011;45:55–8.
- Kleiner DE, Brunt EM, Van Natta M, et al. Design and validation of a histological scoring system for nonalcoholic fatty liver disease. *Hepatology.* 2005;41:1313–21.
- Lanthier N, Molendi-Coste O, Cani PD, van Rooijen N, Horsmans Y, Leclercq IA. Kupffer cell depletion prevents but has no therapeutic effect on metabolic and inflammatory changes induced by a high-fat diet. *FASEB J.* 2011;25:4301–11.
- Ekstedt M, Franzen LE, Mathiesen UL, et al. Long-term follow-up of patients with NAFLD and elevated liver enzymes. *Hepatology.* 2006;44:865–73.
- Enomoto H, Bando Y, Nakamura H, Nishiguchi S, Koga M. Liver fibrosis markers of nonalcoholic steatohepatitis. *World J Gastroenterol.* 2015;21:7427–35.
- Fitzpatrick E, Dhawan A. Noninvasive biomarkers in non-alcoholic fatty liver disease: current status and a glimpse of the future. *World J Gastroenterol.* 2014;20:10851–63.
- Matteoni CA, Younossi ZM, Gramlich T, Boparai N, Liu YC, McCullough AJ. Nonalcoholic fatty liver disease: a spectrum of clinical and pathological severity. *Gastroenterology.* 1999;116:1413–9.
- Wong RJ, Cheung R, Ahmed (2014) A nonalcoholic steatohepatitis is the most rapidly growing indication for liver transplantation in patients with hepatocellular carcinoma in the U.S. *Hepatology.* 59 2188–2195.
- Machado MV, Michelotti GA, Xie G, et al. Mouse models of diet-induced nonalcoholic steatohepatitis reproduce the heterogeneity of the human disease. *PLoS One.* 2015;10:e0127991.
- Charlton M, Krishnan A, Viker K, et al. Fast food diet mouse: novel small animal model of NASH with ballooning, progressive fibrosis, and high physiological fidelity to the human condition. *Am J Physiol Gastrointest Liver Physiol.* 2011;301:G825–34.
- Itagaki H, Shimizu K, Morikawa S, Ogawa K, Ezaki T. Morphological and functional characterization of non-alcoholic fatty liver disease induced by a methionine-choline-deficient diet in C57BL/6 mice. *Int J Clin Exp Pathol.* 2013;6:2683–96.

28. Kristiansen MN, Veidal SS, Rigbolt KT, et al. Obese diet-induced mouse models of nonalcoholic steatohepatitis-tracking disease by liver biopsy. *World J Hepatol.* 2016;8:673–84.
29. Tetri LH, Basaranoglu M, Brunt EM, Yerian LM, Neuschwander-Tetri BA. Severe NAFLD with hepatic necroinflammatory changes in mice fed trans fats and a high-fructose corn syrup equivalent. *Am J Physiol Gastrointest Liver Physiol.* 2008;295:G987–95.
30. Jojima T, Tomotsune T, Iijima T, Akimoto K, Suzuki K, Aso Y. Empagliflozin (an SGLT2 inhibitor), alone or in combination with linagliptin (a DPP-4 inhibitor), prevents steatohepatitis in a novel mouse model of non-alcoholic steatohepatitis and diabetes. *Diabetol Metab Syndr.* 2016;8:45.
31. Saito K, Uebanso T, Maekawa K, et al. Characterization of hepatic lipid profiles in a mouse model with nonalcoholic steatohepatitis and subsequent fibrosis. *Sci Rep.* 2015;5:12466.
32. Asgharpour A, Cazanave SC, Pacana T, et al. A diet-induced animal model of non-alcoholic fatty liver disease and hepatocellular cancer. *J Hepatol.* 2016;65:579–88.
33. Krishnan A, Abdullah TS, Mounajjed T, et al. A longitudinal study of whole body, tissue, and cellular physiology in a mouse model of fibrosing NASH with high fidelity to the human condition. *Am J Physiol Gastrointest Liver Physiol.* 2017;312:G666–80.
34. Trevasakis JL, Griffin PS, Wittmer C, et al. Glucagon-like peptide-1 receptor agonism improves metabolic, biochemical, and histopathological indices of nonalcoholic steatohepatitis in mice. *Am J Physiol Gastrointest Liver Physiol.* 2012;302:G762–72.
35. Droz BA, Sneed BL, Jackson CV, et al. Correlation of disease severity with body weight and high fat diet in the FATZO/Pco mouse. *PLoS One.* 2017;12:e0179808.
36. Peterson RG, Jackson CV, Zimmerman KM, et al. Glucose dysregulation and response to common anti-diabetic agents in the FATZO/Pco mouse. *PLoS One.* 2017;12:e0179856.
37. Abdelmalek MF, Suzuki A, Guy C, et al. Increased fructose consumption is associated with fibrosis severity in patients with nonalcoholic fatty liver disease. *Hepatology.* 2010;51:1961–71.
38. Mager DR, Iniguez IR, Gilmour S, Yap J. The effect of a low fructose and low glycemic index/load (FRAGILE) dietary intervention on indices of liver function, cardiometabolic risk factors, and body composition in children and adolescents with nonalcoholic fatty liver disease (NAFLD). *JPEN J Parenter Enteral Nutr.* 2015;39:73–84.
39. Ouyang X, Cirillo P, Sautin Y, et al. Fructose consumption as a risk factor for non-alcoholic fatty liver disease. *J Hepatol.* 2008;48:993–9.
40. Basaranoglu M, Basaranoglu G, Sabuncu T, Senturk H. Fructose as a key player in the development of fatty liver disease. *World J Gastroenterol.* 2013;19:1166–72.
41. Chen HL, Tsai TC, Tsai YC, Liao JW, Yen CC, Chen CM. Kefir peptides prevent high-fructose corn syrup-induced non-alcoholic fatty liver disease in a murine model by modulation of inflammation and the JAK2 signaling pathway. *Nutr Diabetes.* 2016;6:e237.
42. Wooten JS, Nick TN, Seija A, Poole KE, Stout KB. High-fructose intake impairs the hepatic Hypolipidemic effects of a high-fat fish-oil diet in C57BL/6 mice. *J Clin Exp Hepatol.* 2016;6:265–74.
43. Nishida T, Tsuneyama K, Fujimoto M, et al. Spontaneous onset of nonalcoholic steatohepatitis and hepatocellular carcinoma in a mouse model of metabolic syndrome. *Lab Invest.* 2013;93:230–41.
44. Kanuri G, Bergheim I. In vitro and in vivo models of non-alcoholic fatty liver disease (NAFLD). *Int J Mol Sci.* 2013;14:11963–80.
45. Marin V, Rosso N, Dal Ben M, et al. An animal model for the juvenile non-alcoholic fatty liver disease and non-alcoholic steatohepatitis. *PLoS One.* 2016;11:e0158817.
46. Markham A, Keam SJ. Obeticholic acid: first global approval. *Drugs.* 2016;76:1221–6.
47. Pellicciari R, Fiorucci S, Camaioni E, et al. 6 α -ethyl-chenodeoxycholic acid (6-ECDCA), a potent and selective FXR agonist endowed with anticholestatic activity. *J Med Chem.* 2002;45:3569–72.
48. Nevens F, Andreone P, Mazzella G, et al. A placebo-controlled trial of Obeticholic acid in primary biliary cholangitis. *N Engl J Med.* 2016;375:631–43.
49. Neuschwander-Tetri BA, Loomba R, Sanyal AJ, et al. Farnesoid X nuclear receptor ligand obeticholic acid for non-cirrhotic, non-alcoholic steatohepatitis (FLINT): a multicentre, randomised, placebo-controlled trial. *Lancet.* 2015;385:956–65.
50. Haczeyni F, Poekes L, Wang H, et al. Obeticholic acid improves adipose morphometry and inflammation and reduces steatosis in dietary but not metabolic obesity in mice. *Obesity (Silver Spring).* 2017;25:155–65.
51. Tolbol KS, Kristiansen MN, Hansen HH, et al. Metabolic and hepatic effects of liraglutide, obeticholic acid and elafibranor in diet-induced obese mouse models of biopsy-confirmed nonalcoholic steatohepatitis. *World J Gastroenterol.* 2018;24:179–94.

Ready to submit your research? Choose BMC and benefit from:

- fast, convenient online submission
- thorough peer review by experienced researchers in your field
- rapid publication on acceptance
- support for research data, including large and complex data types
- gold Open Access which fosters wider collaboration and increased citations
- maximum visibility for your research: over 100M website views per year

At BMC, research is always in progress.

Learn more biomedcentral.com/submissions

