

RESEARCH ARTICLE

Variation in grain Zn concentration, and the grain iron, in field-grown Indian wheat

Jaswant Singh Khokhar¹, Sindhu Sareen², Bhudeva Singh Tyagi², Gyanendra Singh², Lolita Wilson¹, Ian P. King¹, Scott D. Young¹, Martin R. Broadley^{1*}

1 School of Biosciences, University of Nottingham, Sutton Bonington Campus, Loughborough, United Kingdom, **2** Indian Institute of Wheat & Barley Research, Karnal, (Haryana), India

* martin.broadley@nottingham.ac.uk



Abstract

Wheat is an important dietary source of zinc (Zn) and other mineral elements in many countries. Dietary Zn deficiency is widespread, especially in developing countries, and breeding (genetic biofortification) through the HarvestPlus programme has recently started to deliver new wheat varieties to help alleviate this problem in South Asia. To better understand the potential of wheat to alleviate dietary Zn deficiency, this study aimed to characterise the baseline effects of genotype (G), site (E), and genotype by site interactions (GxE) on grain Zn concentration under a wide range of soil conditions in India. Field experiments were conducted on a diverse panel of 36 Indian-adapted wheat genotypes, grown on a range of soil types (pH range 4.5–9.5), in 2013–14 (five sites) and 2014–15 (six sites). Grain samples were analysed using inductively coupled plasma-mass spectrometry (ICP-MS). The mean grain Zn concentration of the genotypes ranged from 24.9–34.8 mg kg⁻¹, averaged across site and year. Genotype and site effects were associated with 10% and 6% of the overall variation in grain Zn concentration, respectively. Whilst G x E interaction effects were evident across the panel, some genotypes had consistent rankings between sites and years. Grain Zn concentration correlated positively with grain concentrations of iron (Fe), sulphur (S), and eight other elements, but did not correlate negatively with grain yield, i.e. no yield dilution was observed. Despite a relatively small contribution of genotype to the overall variation in grain Zn concentration, due to experiments being conducted across many contrasting sites and two years, our data are consistent with reports that biofortifying wheat through breeding is likely to be effective at scale given that some genotypes performed consistently across diverse soil types. Notably, all soils in this study were probably Zn deficient and interactions between wheat genotypes and soil Zn availability/management (e.g. the use of Zn-containing fertilisers) need to be better-understood to improve Zn supply in food systems.

OPEN ACCESS

Citation: Khokhar JS, Sareen S, Tyagi BS, Singh G, Wilson L, King IP, et al. (2018) Variation in grain Zn concentration, and the grain iron, in field-grown Indian wheat. *PLoS ONE* 13(1): e0192026. <https://doi.org/10.1371/journal.pone.0192026>

Editor: Manoj Prasad, National Institute of Plant Genome Research, INDIA

Received: August 30, 2017

Accepted: January 16, 2018

Published: January 30, 2018

Copyright: © 2018 Khokhar et al. This is an open access article distributed under the terms of the [Creative Commons Attribution License](https://creativecommons.org/licenses/by/4.0/), which permits unrestricted use, distribution, and reproduction in any medium, provided the original author and source are credited.

Data Availability Statement: All relevant data are within the paper and its Supporting Information files.

Funding: This work was supported by the Biotechnological and Biological Sciences Research Council; Department of Biotechnology, Ministry of Science & Technology, India under Sustainable Crop Production Research for International Development (SCPRID) scheme award to IK (reference BB/J011827/1). The funders had no role in study design, data collection and analysis,

Introduction

Zinc is an essential element for plants and people [1, 2, 3]. Approximately 20% percent of the world's population is at risk of having insufficient Zn in their diets, based on food supply and composition, with much greater proportions at risk in sub-Saharan Africa and South Asia [4,

decision to publish, or preparation of the manuscript.

Competing interests: The authors have declared that no competing interest exist.

5, 6]. Dietary Zn deficiency is linked to diarrhoea, respiratory infections and stunting (low height to weight ratios) in children [7, 8]. Wheat (*Triticum aestivum* L.) is the third most widely consumed cereal crop by weight, after rice and maize, providing ~20% of total global energy and protein supply [9]. This figure rises to >50% of energy in some countries, for example, in India (www.dwr.in). Wheat is an important dietary source of Zn [10] and supplies ~50% Zn of daily needs in India [5] (<http://harvestplus.org/where-we-work/india>). Over the past 20 years, agronomic and breeding-based approaches have been developed to increase the Zn concentration of wheat grain [11, 12]. The most effective agronomic approaches to increasing wheat grain Zn concentrations involve foliar applications of ZnSO₄ solution in the presence of adequate nitrogen [13]. This approach is likely to be cost-effective in terms of yield and health benefits but may require changes to current farming practices [14–18]. Breeding for increased grain Zn concentration is likely to be a more cost-effective approach in the longer term provided there is adequate plant-available Zn in the soil [16, 19–21].

The 'HarvestPlus' programme is developing and deploying new wheat varieties with higher grain Zn concentrations in South Asia [22]. The HarvestPlus target is to enhance the grain Zn concentration in locally-adapted wheat varieties by 8–12 mg kg⁻¹, from a baseline of ~25 mg kg⁻¹, without compromising grain yield or other grain quality attributes [23, 24]. Through collaboration with Banaras Hindu University (BHU), Uttar Pradesh (UP), India, and several private Indian seed companies including Sai Seeds, Nirmal Seeds, and Astha Beej, three varieties with increased grain Zn concentration have been multiplied and released in Eastern UP (North Eastern Plain Zone, NEPZ): Akshai (BHU-3), Abhay (Zinc Shakthi), and BHU-6 [25]. A high zinc wheat variety 'Zincol-2016' has been recommended for release and multiplication in Pakistan by the Pakistan Agriculture Research Council (PARC; <http://www.harvestplus.org/node/1647>). The wheat genotypes used in the present study have been selected to represent a wide diversity of crop types which span all of the agro-climatic wheat growing zones of India for good yield, yield components and quality traits. Most of these genotypes are used as reference lines within advanced variety trials for screening new wheat lines, including under saline/acid soils [26, 27].

It is likely that optimal grain Zn concentrations will ultimately be achieved using a combination of crop improvement and agronomy [28, 15, 16, 29, 30]. However, to date, little work has reported baseline relative contributions of genotype (G), environment (E) and G*E interactions on wheat grain Zn concentration under widely differing field conditions. Therefore, the aim of this study was to quantify baseline variation in grain Zn concentrations of field-grown wheat, using a diverse panel of Indian-adapted wheat genotypes grown on a wide range of soil types but without addition of Zn fertilisers. Simultaneously, the grain concentration of a wider range of elements was determined (NB, the mineral composition of biological tissues is typically referred to as the 'ionome' [31]).

Material and methods

Wheat genotypes, field sites and management

A panel of 36 elite wheat genotypes comprising *Triticum aestivum* L. (n = 34) and *Triticum durum* (n = 2) was selected for study under field conditions. These genotypes represent a diverse genetic background with adaptations to a range of climatic and soil environments. All genotypes and experimental conditions are described in Khokhar *et al.* [26], including data for yield and yield components. In brief, the panel was grown at six field sites in major wheat growing areas of India, during *rabi* (winter) seasons 2013–14 and 2014–15. The six sites were, (1) the Indian Institute of Wheat & Barley Research (IIWBR), Karnal (29.70° N; 76.99° E), Haryana (HR); (2) IIWBR, Hisar (29.18° N; 75.70° E) (HR); (3) Narendra Deva University of

Agriculture and Technology (NDUA&T), Kumarganj (26.43° N; 82.17° E), Faizabad, Uttar Pradesh (UP), reclaimed site; (4) NDUA&T, Kumarganj (26.43° N; 82.17° E), Faizabad (UP), sodic site; (5) Uttar Banga Krishi Viswavidyalaya (UBKV), Regional Research Sub-Station (RRSS), Mathurapur (25.57° N; 87.10° E), Malda (WB) and (6) UBKV, Pundibari (26.32° N; 89.45° E), Cooch Behar, West Bengal (WB). Seeds were manually placed in four rows per plot at 25 cm spacing between rows. The plot length was 2.5 m. The plots were arranged in a simple lattice design (6x6) with two replicates according to standard IIWBR practices. The field experiments were conducted at research farms of IIWBR, Karnal; NDUA&T, Kumarganj and UBKV, Pundibari, with their research director's permission and study received the permission from the Indian Council of Agricultural Research (ICAR) and Department of Biotechnology (DBT) under a collaborative project between India and University of Nottingham, UK; grant number BT/IN/UK/12/IS/2012.

Determining plant-available soil Zn

Top- and sub-soil were sampled with a hand-auger during both growing seasons at all six sites. Five samples were taken at each experimental site at each depth from the vertices of a 'W-pattern'. A single composite sample of 1 kg was retained for each soil depth. To determine plant-available soil Zn concentrations, air-dried soil samples were sieved to 2 mm and a 1.5 g sub-sample extracted with 10 mL of 0.01 M $\text{Ca}(\text{NO}_3)_2$ by shaking for 1 h on a rotary shaker. Soil suspensions were then centrifuged at 3300 rpm for 20 minutes and the supernatant liquid was filtered through 0.22 μm polyether sulfone (PES) syringe filters and acidified to a final concentration of 2% HNO_3 (Primar Plus™, Fisher). Multi-elemental analyses was conducted on (technical) triplicate samples using inductively coupled plasma-mass spectrometry (ICP-MS), as described for the grain samples below. A total of 30 and 36 soil samples were analysed in 2013–14 and 2014–15, respectively; at Kumarganj-reclaimed and Kumarganj-sodic sites, soil samples were taken only from one depth, 0–30 cm, in 2013–14.

Grain sampling and digestion

Grains of each plot from 5 sites (all sites except Pundibari) in 2013–14, and from plots on all 6 sites in 2014–15 were harvested at physiological maturity and sun-dried. A representative sub-sample of grain from each plot was carefully hand-cleaned by discarding broken grains and foreign material. In 2013–14, ~10 grains of each genotype were weighed and digested using a microwave system comprising a Multiwave 3000 platform with a 48-vessel MF50 rotor (Anton Paar GmbH, Graz, Austria); digestion vessels were perfluoroalkoxy (PFA) tubes in polyethylene glycol (PEEK) pressure jackets (Anton Paar GmbH). Grains were digested in 2 mL 70% Trace Analysis Grade (TAG) HNO_3 , 1 mL Milli-Q water (18.2 $\text{M}\Omega$ cm; Fisher Scientific UK Ltd, Loughborough, UK), and 1 mL H_2O_2 . Prior to digestion, the samples were soaked in this solution for 16 h at room temperature. In 2014–15, grain samples were crushed inside a paper bag, and subsamples (~0.200 g DW) were then used without the soaking step. The microwave settings were: power = 1400 W, temperature = 140°C, pressure = 2 MPa, time = 45 minutes. Two operational blanks were included in each digestion run. Duplicate samples of a certified reference material (CRM: Wheat flour SRM 1567b, NIST, Gaithersburg, MD, USA) were included approximately every fourth digestion run. A laboratory reference material (LRM), Paragon was used for each digestion run. Following digestion, each tube was made up to a final volume of 15 mL by adding 11 mL Milli-Q water, then transferred to a 25 mL universal tube (Sarstedt Ltd., Nümbrecht, Germany) and stored at room temperature. Samples were further diluted 1:5 with Milli-Q water into 13 ml tubes (Sarstedt Ltd.) prior to analysis.

Zinc and multi-element analysis

The grain and plant-available soil concentrations of Zn and 30 other elements were determined by ICP-MS (Thermo Fisher Scientific iCAPQ, Thermo Fisher Scientific, Bremen, Germany). The other elements were Ag, Al, As, B, Ba, Be, Ca, Cd, Cr, Co, Cs, Cu, Fe, K, Li, Mg, Mn, Mo, Na, Ni, P, Pb, Rb, S, Se, Sr, Ti, Tl, U, and V. Three operational ICP-MS modes were used: (i) a helium collision-cell (He-cell) with kinetic energy discrimination to remove polyatomic interferences, (ii) standard mode (STD) in which the collision cell was evacuated, and (iii) a hydrogen collision-reaction cell (H₂-cell). Samples were introduced from an auto sampler incorporating an ASXpress™ rapid uptake module (Cetac ASX-520, Teledyne Technologies Inc., Omaha, NE, USA) through a PEEK nebuliser (Burgener Mira Mist, Mississauga, Burgener Research Inc., Canada). Internal standards were introduced to the sample stream on a separate line via the ASXpress unit and included Sc (20 µg L⁻¹), Rh (10 µg L⁻¹), Ge (10 µg L⁻¹) and Ir (5 µg L⁻¹) in 2% TAG HNO₃ (Fisher Scientific UK Ltd). External multi-element calibration standards (Claritas-PPT grade CLMS-2; SPEX Certiprep Inc., Metuchen, NJ, USA) included Ag, Al, As, B, Ba, Be, Cd, Ca, Co, Cr, Cs, Cu, Fe, K, Li, Mg, Mn, Mo, Na, Ni, P, Pb, Rb, S, Se, Sr, Ti, Tl (semi-quant), U, V and Zn, in the range 0–100 µg L⁻¹ (0, 20, 40, 100 µg L⁻¹). A bespoke external multi-element calibration solution (PlasmaCAL, SCP Science, Courta-boeuf, France) was used to create Ca, K, Mg and Na standards in the range 0–30 mg L⁻¹. Boron, P and S calibration utilised in-house standard solutions (KH₂PO₄, K₂SO₄ and H₃BO₃). In-sample switching was used to measure B and P in STD mode, Se in H₂-cell mode and all other elements in He-cell mode. Sample processing was undertaken using Qtegra™ software (Thermo Fisher Scientific) with external cross-calibration between pulse-counting and analogue detector modes when required. In total, 288 grain samples were analysed in 7 runs in 2013–14, and 432 grain samples in 12 runs in 2014–15, excluding blank, CRM and LRM samples. The Zn-specific recovery from CRMs was 96% in 2013–14 and 94% in 2014–15 compared with certified CRM values.

Data analysis of grain Zn concentration and the grain ionome

For each data-point, an element-specific operational blank concentration (mean of each ICP-MS run) was subtracted. Data were then multiplied by initial sample volume, divided by the initial dry mass of material, and converted to mg element kg⁻¹ dry grain material. Element-specific limits of detection (LODs) were reported as 3 times the standard deviation (SD) of the ten operational blank concentrations, assuming a notional starting dry weight of 0.4 g in 2013–14 and 0.2 g in 2014–15 (S1 Table). Out of 31 mineral elements, 15 (Ag, Al, B, Be, Cd, Co, Cr, Li, Na, Ni, Pb, Tl, Ti, U, V) were removed from further analysis because their mean grain concentration across all plots was less than the LOD (S2 Table). For the remaining elements, when an individual sample had a grain element concentration less than the LOD, actual values were replaced with 50% LOD. Grain element concentrations >5 standard deviation (SDs) greater than the global arithmetic mean for each element were also removed from the analysis as a precaution against using contaminated samples (15 and 31 data points were removed in 2013–14 and 2014–15, respectively). All data are provided in S3 Table.

Statistical analyses

Variance components associated with grain concentration of Zn and 15 other grain mineral elements (As, Ba, Ca, Cs, Cu, Fe, K, Mg, Mn, Mo, P, Rb, S, Se, and Sr) were calculated. Analyses of Variance (ANOVA) and Least Significant Difference (LSD) tests were used to test for differences in mean grain elemental concentration between sites and genotypes. Broad-sense heritability (H²) was calculated from ANOVA for all the grain mineral elements across all sites

as $H^2 = V_g/V_p$ where V_g is the genotypic variance and V_p is the phenotypic variance. A genotype plus genotype by environment (site) interaction (GGE) analysis was performed to construct a biplot for grain Zn concentration to study the genotype and genotype by environment interaction effect, to explore the adaptation of genotypes to the specific sites. Differences between sites and genotypes for grain mineral composition traits were considered significant at $P < 0.01$. Pearson correlation coefficients were calculated for the 16 grain mineral elements, along with grain yield, for each site in each year. All analyses were conducted using GenStat 17th Edition (VSN International Ltd, Hemel Hempstead, UK).

Results

This study reports the contribution of genotype and site factors to variation in grain Zn concentration, and the grain ionome, of 36 wheat genotypes in India. Primary data are provided in [S4 Table](#).

Variation in wheat grain Zn concentration and the grain ionome

The mean grain Zn concentration across all plots and years ($n = 719$) was 29.3 mg kg^{-1} and varied from 3.4 to 60.9 mg kg^{-1} , across all plots ([Table 1](#)). Among the macronutrients, the mean grain concentration of Ca, K, Mg, P and S were 369 , 4190 , 1160 , 3610 and 1490 mg kg^{-1} , respectively and varied 20-fold for Ca, 14-fold for K, 15-fold for Mg, 189-fold for P and 17-fold for S. Among the micronutrients, the mean grain concentration of Cu, Fe, Mn and Mo across all plots were 4.3 , 37.8 , 37.5 and 0.74 mg kg^{-1} , respectively ($n = 719$). Grain concentration

Table 1. Grain concentrations of Zn and other mineral elements of Indian wheat. Data are in mg kg^{-1} , summarised across all plots ($n = 719$). Grain yield and yield components data are summarised across all plots ($n = 864$).

Element	Mean	Median	SD	Range	LOD	Heritability
Zn	29.3	28.4	6.99	3.44–60.9	0.744	56.8
As	0.0186	0.0107	0.0183	0.003–0.089	0.00564	49.9
Ba	4.29	4.09	2.12	0.27–13.2	0.0493	89.2
Ca	369	362	86.1	36.9–726	17.6	83.3
Cs	0.0161	0.0100	0.0170	0.0004–0.093	0.00077	78.5
Cu	4.34	4.28	0.939	0.65–7.53	1.3	81.1
Fe	37.8	37.4	9.74	6.43–85.9	12.9	75.5
K	4190	4180	609	476–6520	11.9	80.4
Mg	1160	1130	216	140–2090	2.9	71.5
Mn	37.5	37.1	10.1	5.82–66.5	3.51	85.5
Mo	0.740	0.762	0.471	0.056–2.44	0.111	80.3
P	3610	3640	524	311–6030	7.2	51.1
Rb	8.55	7.91	6.34	0.156–26.7	0.00426	88.2
S	1490	1520	292	140–2270	280	73.6
Se	0.159	0.0998	0.138	0.015–0.824	0.0297	8.35
Sr	5.07	5.27	3.3	0.20–17.9	0.161	66.9
Grain yield and yield components						
GYD	3.83	3.38	1.68	0.28–8.43		33.4
TGW	38.1	38.3	6.44	14.9–63.8		63.1
GWS	1.76	1.72	0.48	0.218–3.41		62.2
HI	34.2	35.1	8.11	2.55–58.1		63.9
PHT	92.7	91.7	19.7	48.2–167		75.0
DTM	126	127	11.6	90–148		95.7

<https://doi.org/10.1371/journal.pone.0192026.t001>

varied 12-fold for Cu, 13-fold for Fe, 11-fold for Mn and 41-fold for Mo. Among trace elements, the mean grain As and Se concentrations were 0.02 and 0.16 mg kg⁻¹, respectively, and varied from 0.003 to 0.089 for As and from 0.02 to 0.8 mg kg⁻¹ for Se (Table 1). Cadmium (Cd) and lead (Pb) are trace element of interest in the context of Zn biofortification [32] because they are potentially toxic to humans [33–36]. In this study, the mean grain Cd and Pb concentrations across all plots were less than the LODs of 0.0341 and 0.0660 mg kg⁻¹ for Cd and Pb, respectively, and were therefore not included in further data analyses.

The mean grain yield (GYD) across all plots and years (n = 864) was 3.83 t ha⁻¹ and varied from 0.28 to 8.43 t ha⁻¹, across all plots (Table 1). The mean 1000 grain weight (TGW, g), grain weight per spike (GWS, g), harvest index (HI, %), plant height at maturity (PHT, cm) and days to maturity (DTM, days) were 38.1 g, 1.76 g, 34.2%, 92.7 cm and 126 days, respectively.

Variance components associated with grain Zn concentration and the grain ionome

Genotype (G) and site terms (E) were associated with 10% and 6% of the variation in grain Zn concentration, respectively (Table 2). The G x E interaction term was associated with 20% of the variation in grain Zn concentration. The residual term (R) was associated with 64% of the

Table 2. The contribution of G, E, G*E and residual factors to variation percentage (%) in grain Zn concentration and the grain ionome of a panel of 36 wheat genotypes grown at five sites in 2013–14 and at six sites in 2014–15 and in grain yield and yield components of a panel of 36 genotypes grown at six sites over two years.

Element	Variation %				P value		
	G	E	G*E	Residual	G	E	G*E
Zn	10	6	20	64	<0.001	<0.001	0.816
Others							
As	2	70	6	21	0.015	<0.001	0.908
Ba	27	39	11	22	<0.001	<0.001	<0.001
Ca	18	28	10	44	<0.001	<0.001	0.999
Cs	2	89	4	5	<0.001	<0.001	<0.001
Cu	14	14	11	61	<0.001	<0.001	1
Fe	9	19	9	63	<0.001	<0.001	1
K	18	18	15	49	<0.001	<0.001	0.841
Mg	11	36	12	41	<0.001	<0.001	0.93
Mn	11	55	9	25	<0.001	<0.001	0.591
Mo	4	79	4	13	<0.001	<0.001	0.798
P	12	8	21	59	<0.001	<0.001	0.446
Rb	2	87	3	8	<0.001	<0.001	0.213
S	8	12	9	71	0.019	<0.001	1
Se	1	67	5	27	0.960	<0.001	1
Sr	7	71	6	16	<0.001	<0.001	0.299
<i>d.f.</i>	35	5	175	503			
Grain yield and yield components							
GYD	8	62	11	20	<0.001	<0.001	<0.001
TGW	16	37	17	30	<0.001	<0.001	<0.001
GWS	15	31	12	42	<0.001	<0.001	0.377
HI	16	21	13	50	<0.001	<0.001	0.545
PHT	23	55	5	17	<0.001	<0.001	0.443
DTM	3	75	3	19	<0.001	<0.001	1
<i>d.f.</i>	35	5	175	648			

<https://doi.org/10.1371/journal.pone.0192026.t002>

variation in grain Zn concentration, and represents variation due to year, plot-to-plot variation between replicates, and technical/measurement errors.

Site (E) was typically associated with a greater proportion of the variation in the grain concentration of other minerals compared to Zn (Table 2). Among the macronutrients, 28, 18, 36, 8 and 12% of the variation in grain Ca, K, Mg, P and S concentration were associated with E; 18, 18, 11, 12 and 8% of the variation were associated with G, respectively. Among the micronutrients, E was associated with 14, 19, 55 and 79% of the variation in grain Cu, Fe, Mn and Mo concentration, respectively; 14, 9, 11 and 4% of the variation were associated with G, respectively. Among non-essential trace elements, 70 and 67% of the variation in grain As and Se concentration, respectively, were associated with E, with just 2 and 1% of the variation associated with G, respectively.

Most of the variation in yield and yield components was associated with site; 62, 55 and 75% of the variation in GYD, PHT and DTM, respectively (Table 2).

Differences in grain Zn concentration and the grain iron between genotypes

Grain Zn concentration differed between genotypes in both 2013–14 and 2014–15 ($P < 0.001$). The mean grain Zn concentration of 36 genotypes, averaged across sites, varied from 21.4 to 35.6 mg kg^{-1} in 2013–14 (Fig 1a) and from 26.5 to 34.3 mg kg^{-1} in 2014–15 (Fig 1b). The Kharchia 65 genotype had the greatest grain Zn concentration in both years. The HW 2044 and GW 322 genotypes had the smallest grain Zn concentration in 2013–14 and in 2014–15, respectively.

Among the macronutrients and micronutrients, the grain concentrations of Ca, Mg, S, Fe, Cu and Mn differed between genotypes in both 2013–14 and 2014–15 ($P < 0.001$). Among the non-essential trace elements, the grain As and Se concentration did not differ significantly between genotypes in either year.

The mean grain Ca concentration of 36 genotypes, averaged across sites, varied from 285.2 to 437 mg kg^{-1} in 2013–14 and from 317 to 453 mg kg^{-1} in 2014–15. The KRL 3–4 and NW

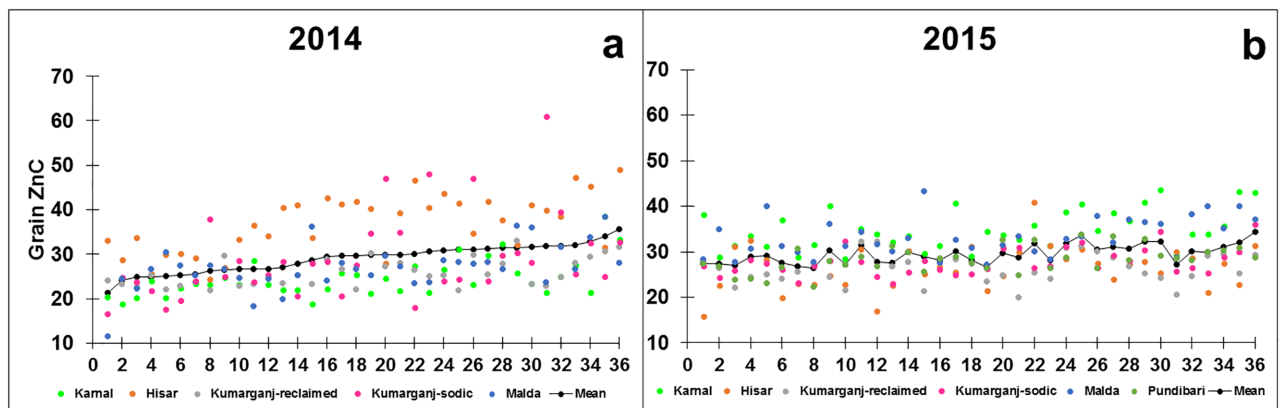


Fig 1. Grain Zn concentration in a panel of 36 genotypes, averaged across five sites in 2013–14 and six sites in 2014–15. Data represent the means of two replicate plots per genotype at Karnal, Hisar and Malda, and one replicate per genotype at Kumarganj-reclaimed and Kumarganj-sodic sites in 2013–14, and the means of two replicate plots of each genotype at all six sites in 2014–15. Genotypes 1–36 are labelled in the same order in both years on the x-axis: 1) HW 2044; 2) HD 2932; (3) RW 3684; (4) WH 1021; (5) HD 2967; (6) DBW 46; (7) KRL 1–4; (8) GW 322; (9) NW 4092; (10) GW 322; (11) NW 4092; (12) PDW 314; (13) RAJ 4229; (14) MACS 6222; (15) DPW 621–50; (16) WH 1105; (17) HI 1563; (18) KRL 210; (19) DBW 71; (20) NW 1067; (21) NW 4018; (22) DBW 14; (23) KRL 213; (24) HI 8498; (25) BH 1146; (26) DBW 51; (27) KRL 19; (28) UP 262; (29) DBW 17; (30) K 0307; (31) HD 2009; (32) HD 2733; (33) RAJ 4238; (34) DBW 39; (35) KRL 3–4; (36) Kharchia 65.

<https://doi.org/10.1371/journal.pone.0192026.g001>

1067 genotypes had the greatest grain Ca concentration in 2013–14 and in 2014–15, respectively. The CBW 38 and NW 4018 genotypes had the smallest grain Ca concentration in 2013–14 and in 2014–15, respectively. The mean grain Mg concentration of 36 genotypes, averaged across sites, varied from 911 to 1330 mg kg⁻¹ in 2013–14 and from 1050 to 1380 mg kg⁻¹ in 2014–15. The KRL 3–4 genotype had the greatest grain Mg concentration in both years. The HW 2044 and KRL 213 genotypes had the smallest grain Mg concentration in 2013–14 and in 2014–15, respectively. The mean grain S concentration of 36 genotypes, averaged across sites, varied from 1080 to 1570 mg kg⁻¹ in 2013–14 and from 1480 to 1870 mg kg⁻¹ in 2014–15. The KRL 3–4 and BH 1146 genotypes had the greatest grain S concentration in 2013–14 and in 2014–15, respectively. The HW 2044 and GW 322 genotypes had the smallest grain S concentration in 2013–14 and in 2014–15, respectively.

Among the micronutrients, the mean grain Cu concentration of 36 genotypes, averaged across sites, varied from 3.1 to 4.9 mg kg⁻¹ in 2013–14 and from 3.8 to 5.3 mg kg⁻¹ in 2014–15. The KRL 19 and HI 1563 genotypes had the greatest grain Cu concentration in 2013–14 and in 2014–15, respectively. The WH 1021 and DBW 46 genotypes had the smallest grain Cu concentration in 2013–14 and in 2014–15, respectively. The mean grain Fe concentration of 36 genotypes, averaged across sites, varied from 26.7 to 42.9 mg kg⁻¹ in 2013–14 and from 34.6 to 47.6 mg kg⁻¹ in 2014–15. The Kharchia 65 and KRL 3–4 genotypes had the greatest grain Fe concentration in 2013–14 and in 2014–15, respectively. The HW 2044 and PDW 314 genotypes had the smallest grain Fe concentration in 2013–14 and in 2014–15, respectively. The mean grain Mn concentration of 36 genotypes, averaged across sites, varied from 25.0 to 43.1 mg kg⁻¹ in 2013–14 and from 29.0 to 47.8 mg kg⁻¹ in 2014–15. The BH 1146 and KRL 210 genotypes had the greatest grain Mn concentration in 2013–14 and in 2014–15, respectively. The PDW 314 genotype had the smallest grain Mn concentration in both years.

The mean grain Zn concentration of 36 genotypes showed a positive relationship between 2013–14 and 2014–15 ($r = 0.65$, $P < 0.001$; Fig 2). Within sites, the mean grain Zn concentration of 36 genotypes showed positive relationships between 2013–14 and 2014–15 at Karnal ($r = 0.64$; $P < 0.001$), Hisar ($r = 0.36$; $P < 0.05$) and Malda ($r = 0.63$; $P < 0.001$).

The mean grain Ca, Mg, S, Cu, Fe and Mn concentrations of 36 genotypes showed positive relationships between 2013–14 and 2014–15 (r between 0.61 and 0.77; $P < 0.001$; Fig 2). The mean grain As concentration of 36 genotypes showed a positive relationship between 2013–14 and 2014–15 ($r = 0.37$, $P < 0.05$). However, the mean grain Se concentration of 36 genotypes did not correlate between 2013–14 and 2014–15 (Fig 2).

Differences in grain Zn concentration and the grain ionome between sites

Grain Zn concentration differed between sites ($P < 0.001$) (Fig 3). The mean grain Zn concentration varied from 26.1 (Kumarganj-reclaimed) to 31.7 (Hisar) mg kg⁻¹, averaged across 36 genotypes and years (LSD = 1.74) (Fig 3).

Among the macronutrients, grain Ca, Mg, S concentrations differed between sites. The mean grain Ca concentration varied from 309 (Malda) to 425 (Hisar) mg kg⁻¹, averaged across 36 genotypes and years (LSD = 17.77). The mean grain Mg concentration varied from 1000 (Pundibari) to 1370 (Kumarganj-reclaimed) mg kg⁻¹ (LSD = 43.3). The mean grain S concentration varied from 1380 (Pundibari) to 1690 (Kumarganj-sodic) mg kg⁻¹ (LSD = 76.8).

Among the micronutrients, the mean grain Cu concentration varied from 3.7 (Kumarganj-reclaimed) to 5.0 (Kumarganj-sodic) mg kg⁻¹, averaged across 36 genotypes and years (LSD = 0.23). The mean grain Fe concentration varied from 28.1 (Pundibari) to 41.9 (Kumarganj-sodic) mg kg⁻¹ (LSD = 2.41). The mean grain Mn concentration varied from

Correlations

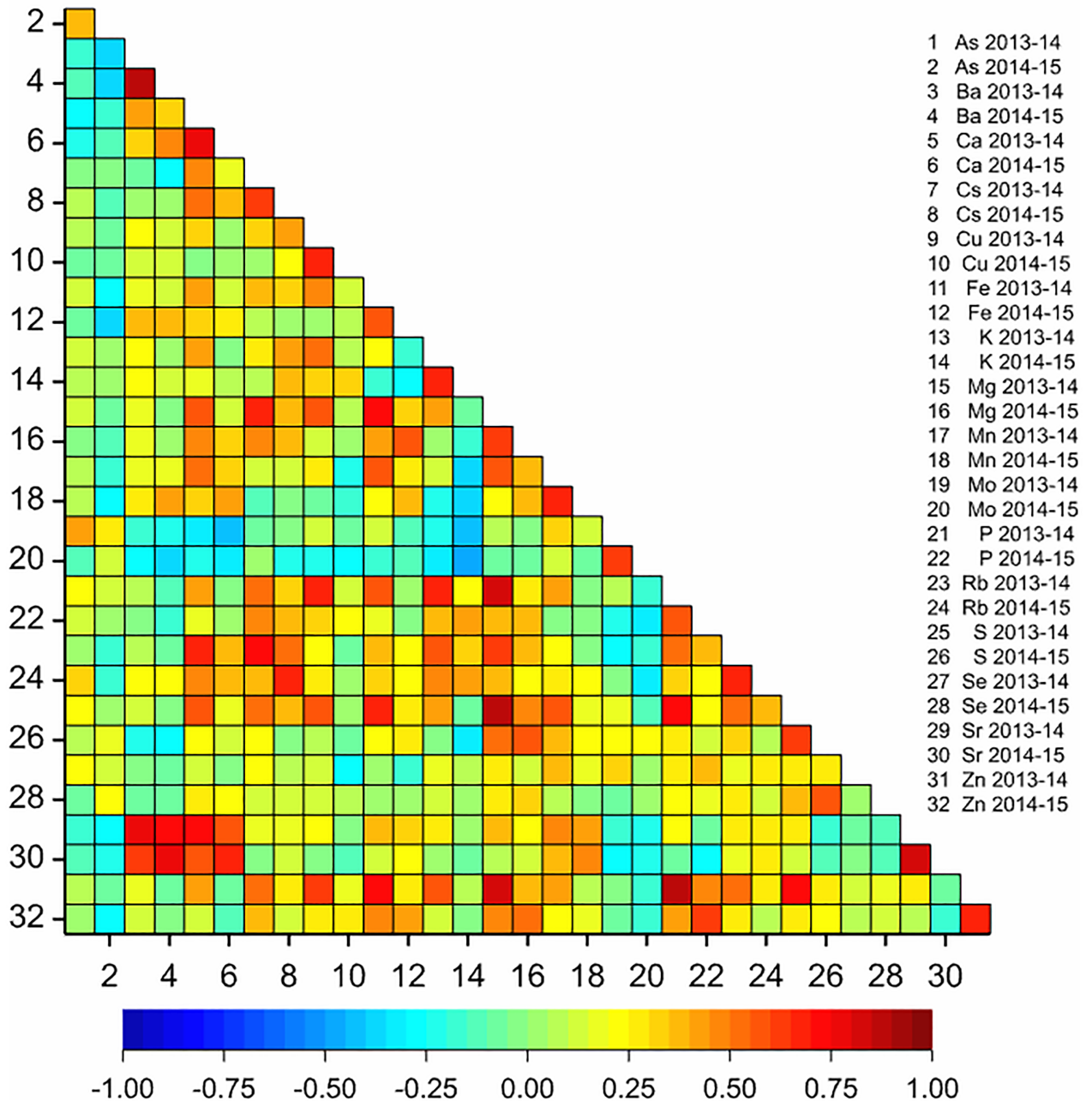


Fig 2. The correlation coefficients in grain ionome of a panel of 36 genotypes between 2013–14 and 2014–15. Data represent the means of two replicate plots per genotype at Karnal, Hisar and Malda, and one replicate per genotype at Kumarganj-reclaimed and Kumarganj-sodic sites in 2013–14, and the means of two replicate plots of each genotype at all six sites in 2014–15. Colour represents strength of correlation from strongly negative (dark blue) to strongly positive (dark red).

<https://doi.org/10.1371/journal.pone.0192026.g002>

28.9 (Kumarganj-reclaimed) to 48.7 (Hisar) mg kg⁻¹ (LSD = 1.59). Among the non-essential trace elements, the mean grain As concentration varied from 0.003 (Pundibari) to 0.040 (Hisar) mg kg⁻¹, averaged across 36 genotypes and years (LSD = 0.003). The mean grain Se concentration varied from 0.07 (Malda) to 0.36 (Hisar) mg kg⁻¹ (LSD = 0.02) (Fig 3).

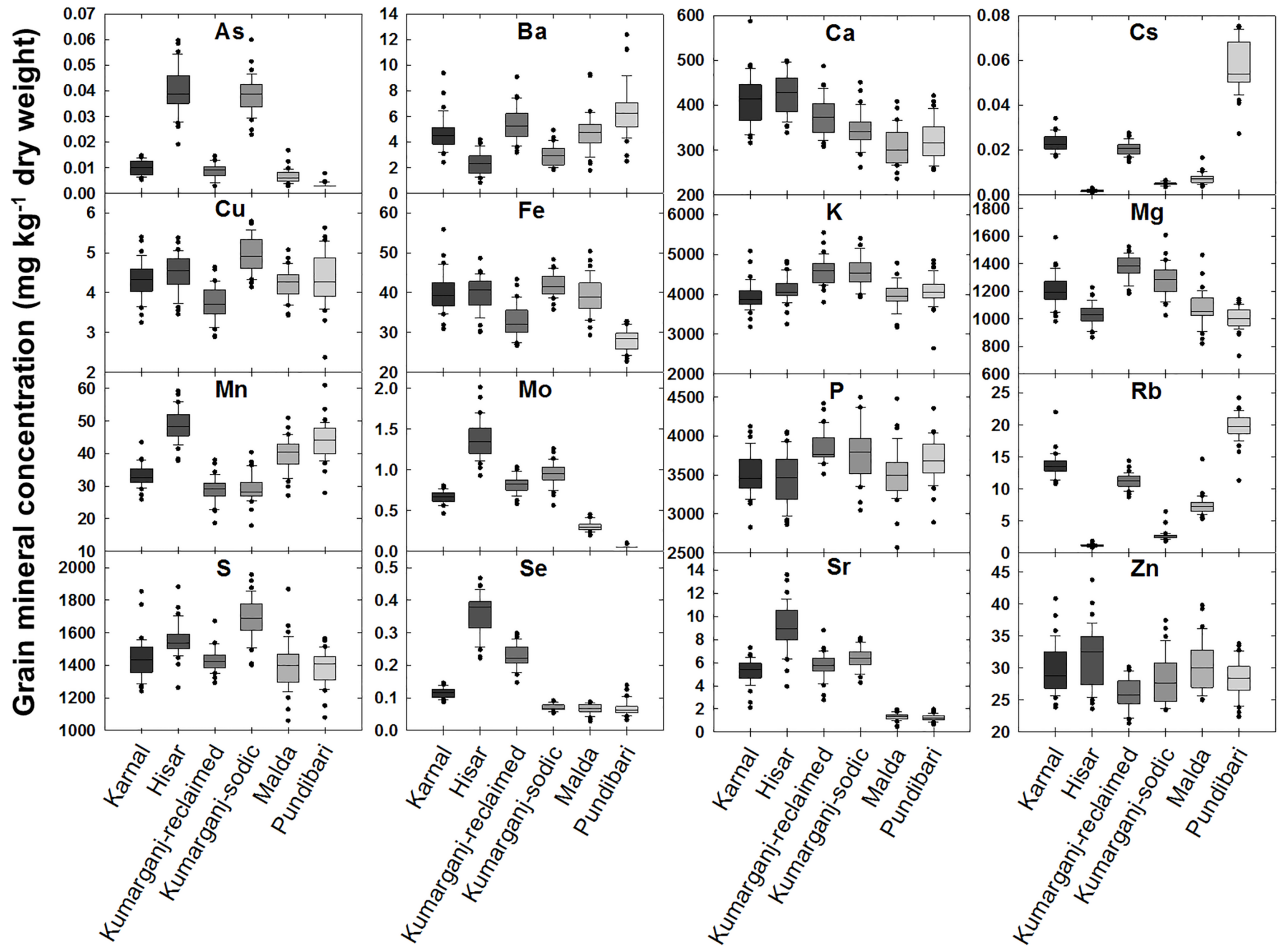


Fig 3. Grain element concentrations of 36 genotypes of wheat at six sites over two years. Data represent the means of two replicate plots per genotype at Karnal, Hisar, Malda and one replicate plot per genotype at Kumarganj-reclaimed and Kumarganj-sodic sites in 2013–14 and two replicate plots per genotype at all six sites in 2014–15. Boxes represent the two mid-quartiles with the median drawn; whiskers are the 95% confidence limits; circles are the outliers.

<https://doi.org/10.1371/journal.pone.0192026.g003>

The genotype and genotype by environment interaction (GGE) effects were visualised using a biplot (Fig 4). The biplot explained 60.2% of total variation with the contribution of 36.4% from principal component-1 (PC-1) and 23.8% from principal component-2 (PC-2). The genotypes 1 (BH 1146) and 20 (Kharchia 65) which have the PC1 value >0 and PC2 value near to zero being considered the more stable and highest Zn containing genotypes across all the sites. Genotypes 6 (DBW 39), 16 (HI 1563), 22 (KRL 19) and 32 (Raj 4238) were also among the more stable genotypes for grain Zn concentration. Genotypes which are closest to specific sites indicates that they are likely to be better suited to that particular site for high grain Zn concentration. For example, genotype 3 (DBW 14) at Hisar; 5 (DBW 17) and 19 (K 0307) at Karnal; 25 (KRL 3–4) at Malda; 1 (BH 1146), 6 (DBW 39) and 22 (KRL 19) at Kumarganj-reclaimed and Pundibari, and 8 (DBW 51) and 34 (Up 262) at Kumarganj-sodic site, showed higher grain Zn concentration (Fig 4).

Relationship of grain Zn concentration with grain ionome and grain yield

There was no negative correlation between grain Zn concentration and grain yield (GYD), rather a weakly positive correlation ($r = 0.08$; $P = 0.03$) (Fig 5). The grain Zn concentration

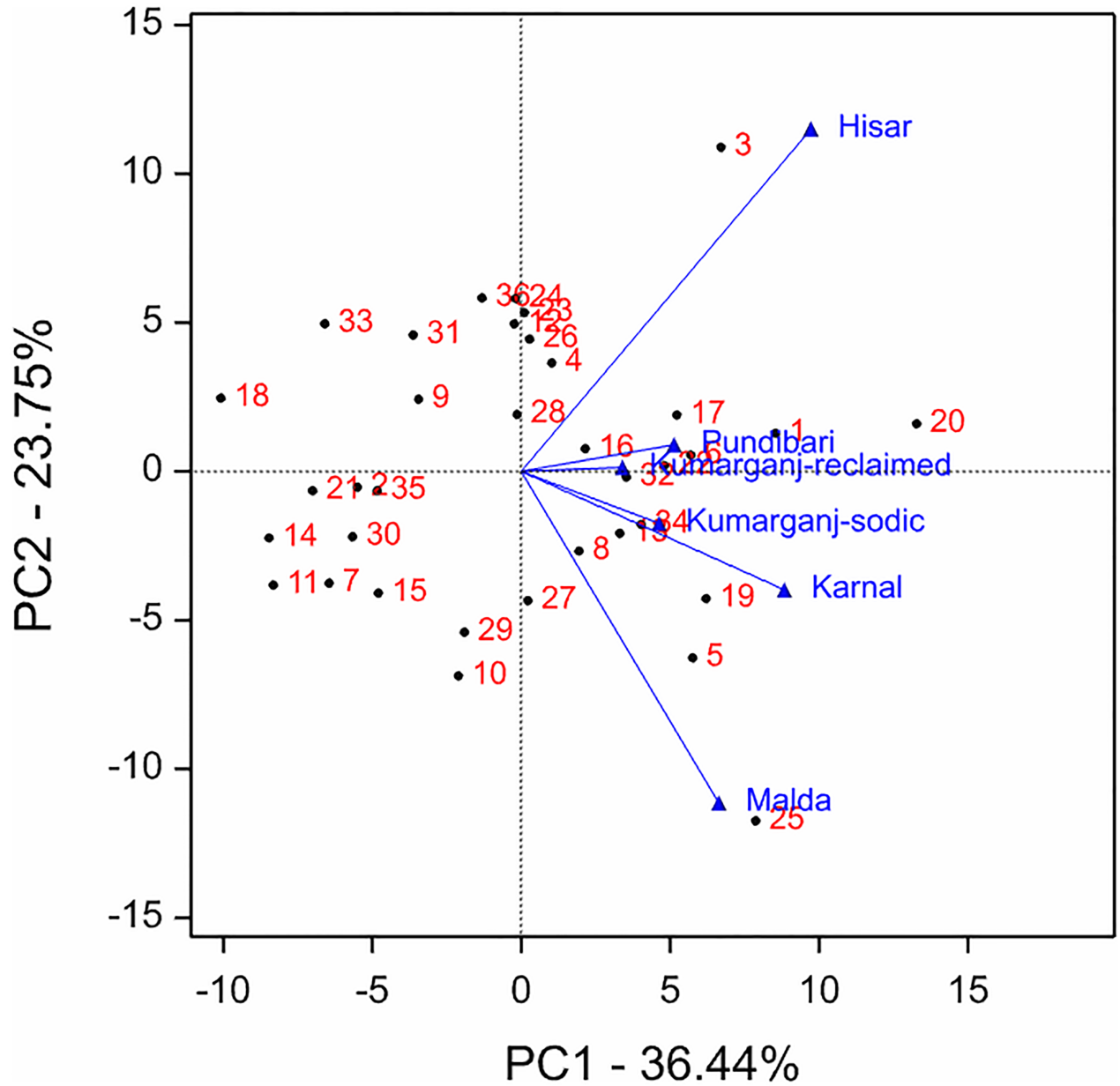


Fig 4. GGE biplot for grain Zn concentration of 36 genotypes evaluated at 6 sites over two years. Genotypes 1–36 are as: 1 (BH 1146); 2 (CBW 28); 3 (DBW 14); 4 (DBW 16); 5 (DBW 17); 6 (DBW 39); 7 (DBW 46); 8 (DBW 51); 9 (DBW 71); 10 (DPW 621–50); 11 (GW 322); 12 (HD 2009); 13 (HD 2733); 14 (HD 2932); 15 (HD 2967); 16 (HI 1563); 17 (HI 8498); 18 (HW 2044); 19 (K 0307); 20 (Kharchia 65); 21 (KRL 1–4); 22 (KRL 19); 23 (KRL 210); 24 (KRL 213); 25 (KRL 3–4); 26 (MACS 6222); 27 (NW 1067); 28 (NW 4018); 29 (NW 4092); 30 (PDW 314); 31 (Raj 4229); 32 (Raj 4238); 33 (RW 3684); 34 (UP 262); 35 (WH 1021); 36 (WH 1105).

<https://doi.org/10.1371/journal.pone.0192026.g004>

showed positive significant relationships with grain Ca, Cu, Fe, K, Mg, Mn, Mo, P, S and Se ($P < 0.001$) (Fig 5). However, grain Zn concentration did not show any relationships with grain As, Ba, Cs, Rb or Se concentrations. The grain Zn concentration showed stronger relationships with grain Cu, Fe, Mn, P and S ($r = 0.61, 0.46, 0.43, 0.53, 0.46$, respectively) than with grain Ca, K, Mg, Mo and Sr ($r = 0.36, 0.20, 0.33, 0.18, 0.15$, respectively) concentrations (Fig 5).

Correlations

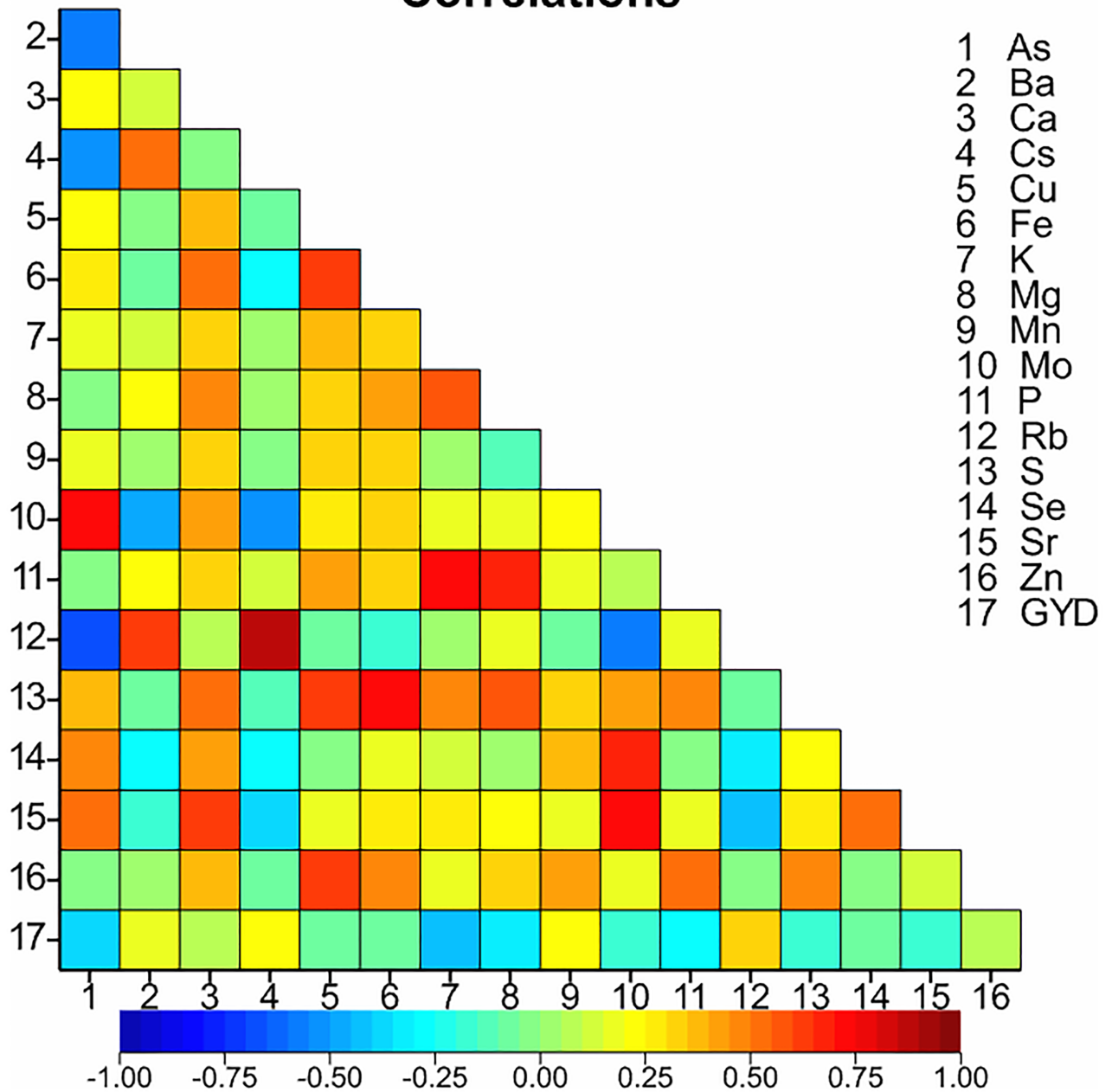


Fig 5. The relationship of grain Zn concentration (mg kg^{-1}) with GYD (t ha^{-1}) and other grain mineral elements in a panel of 36 wheat genotypes grown at five sites in 2013–14 and six sites in 2014–15. Data are means of two replicate per plot at Karnal, Hisar and Malda and one replicate at Kumarganj-reclaimed and Kumarganj-sodic sites in 2013–14 and two replicate per plot at six sites in 2004–15 ($n = 719$). Colour represents strength of correlation from strongly negative (dark blue) to strongly positive (dark red).

<https://doi.org/10.1371/journal.pone.0192026.g005>

Variation in grain Zn concentration due to variation in plant-available soil Zn

In the present study, plant-available soil Zn concentrations were reported in top and sub-surface soils at six sites in 2013–14 and 2014–15 based on the use of a non-conventional extract of $\text{Ca}(\text{NO}_3)_2$ [37, 38] (Table 3). Plant available soil Zn concentration varied from 0.04–1.10 mg

Table 3. Plant available soil Zn (Ca(NO₃)₂-extractable) and grain Zn concentration at six sites in 2013–14 and 2014–15. Soil Zn data are means of three replicate soil samples of each depth at each site. Grain Zn data are mean of two replicate at Karnal, Hisar, Malda and one replicate at Kumarganj-reclaimed and Kumarganj-sodic sites in 2013–14 and two replicates at all six sites in 2014–15.

Sites	[Zn] _{soil} (mg kg ⁻¹) at two soil depths (cm)				[Zinc] _{grain}	
	2013–14		2014–15		2013–14	2014–15
	0–15	15–30	0–15	15–30		
Karnal	0.04	0.03	0.10	0.06	24.6	34.9
Hisar	0.33	0.03	0.22	0.04	36.8	26.4
Kumarganj-reclaimed	0.03*	0.03*	0.03	0.03	25.8	26.3
Kumarganj-sodic	0.03*	0.03*	0.17	0.03	29.1	27.8
Malda	0.28	0.46	0.03	0.03	27.1	33.3
Pundibari	1.10	2.14	0.21	0.05	-	28.3

* Zn concentration at 0–30 cm of soil depth.

<https://doi.org/10.1371/journal.pone.0192026.t003>

kg⁻¹ in 0–15 cm and from 0.03–2.14 mg kg⁻¹ in 15–30 cm soil depths in 2013–14 while in 2014–15, it varied from 0.03–0.22 mg kg⁻¹ in 0–15 cm and from 0.003–0.06 mg kg⁻¹ in 15–30 cm soil depths, at six sites. All sites showed very low concentrations of immediately plant available Zn in the soil in both years except at Pundibari in 2013–14.

At Karnal, soil available Zn concentration was greater in 2014–15 than in 2013–14 at both soil depths and also showed greater grain Zn concentration in 2014–15 than in 2013–14. Contrastingly, at Malda, the soil available Zn concentration was greater in 2013–14 than 2014–15 in both the soil depths, but, grain Zn concentration was greater in 2014–15 than in 2013–14 (Table 3).

Discussion

Wheat is an important dietary source of Zn for the Indian population and there is scope to increase grain Zn concentrations in wheat through breeding to help alleviate dietary Zn deficiency. In the present study, the grain Zn concentration of 36 wheat genotypes varied from 26–32 mg kg⁻¹. Our results are consistent with Zhao *et al.* [39] who reported grain Zn concentration from 14 to 35 mg kg⁻¹ in 150 field grown bread wheat lines. A similar range of grain Zn concentration were reported among 66 advanced wheat genotypes (20–39 mg kg⁻¹) selected from Central Asia Breeding Programs by Morgounov *et al.* [40], and grown in Kazakhstan, Kyrgyzstan and Tajikistan. Among 40 bread wheat lines from CIMMYT breeding programmes grown at nine locations in South Asia and Mexico, grain Zn concentration from 29–40 mg kg⁻¹ [23]. A summary of grain Zn concentrations was recently published at global scale in field grown wheat and reported grain Zn concentration from 20–31 mg kg⁻¹, showed a difference of 10 to 20 mg kg⁻¹ from the biofortification target of 40 mg kg⁻¹ for human diet [41].

Because experiments were conducted at a wide range of soil conditions, and over two seasons, genotype (G) accounted for a relatively small proportion of the total variation in grain Zn concentration. This is not surprising given that grain Zn concentration is a complex trait, under the control of many genes that can be modified under different environments. Joshi *et al.* [42], Velu *et al.* [23, 43] and Swamy *et al.* 2016 [44] also reported a significant effect of different environments on variation in grain Zn concentration. However, some genotypes still had a consistent ranking across sites and years for grain Zn concentration. For example, Kharchia 65 and BH 1146 genotypes showed comparatively greater grain Zn concentration across six sites. Genotype, Kharchia 65 is a salt tolerant genotype [45] and BH 1146 is an aluminium tolerant genotype [46]. Therefore, Kharchia 65 and BH 1146 might be potential new

sources of background variation for crossing with new Zn-biofortified wheat varieties, including for saline/sodic and acidic soil areas. In addition to Kharchia 65 and BH 1146, several genotypes achieved more than 31 mg kg^{-1} of grain Zn concentration at different locations, which is equivalent to 50% of the HarvestPlus target of 12 mg kg^{-1} above a notional baseline grain Zn concentration of 25 mg kg^{-1} . Given that these lines already have implicitly good grain yield and other quality attributes for India, such lines could also be useful for crossing with high-Zn lines derived from the HarvestPlus, to support site-specific approaches as adopted previously for yield and yield component traits [26].

The high-Zn wheat varieties were developed by HarvestPlus using the high Zn containing accessions of synthetic wheats, spelt wheats and, further crossing with well adapted high-yielding hexaploid wheat varieties. Synthetic wheat lines were developed by crossing of *Triticum durum* and high-Zn containing wild accessions of tetraploid *Triticum dicoccon* with *Aegilops squarrosa* [22]. The *T. durum* based synthetic hexaploid wheat was developed by crossing of *T. durum* wheat cultivar with *Aegilops squarrosa*, a D genome donor of wheat, and further selections have developed a high-Zn variety, the Zinc Shakti (CROC1/AE.SQUARROSA (210)//INQALAB91*2/KUKUNA/3/PBW343*2/KUKUNA) for North-Eastern Plain Zones of India and showed 14 mg kg^{-1} greater grain Zn concentration than a notional baseline grain Zn concentration of 25 mg kg^{-1} . The *T. dicoccon* based synthetic hexaploid wheat was developed by crossing of a high Zn containing accession of wild *T. dicoccon* with *Aegilops squarrosa* and further selections have developed the WB02 and HPBW-01 (T.DICOCCON, CI9309/AE.SQUARROSA (409)//MUTUS/3/2*MUTUS) wheat varieties for North-Western Plain Zones of India and showed 7 mg kg^{-1} greater grain Zn concentration than the notional baseline grain Zn concentration of 25 mg kg^{-1} . Similarly, Zincol-2016 has been released for the Pakistan and developed by crossing of a well-adapted NARC2011 wheat variety with a high Zn containing accession of *T. spelta* and showed 9 mg kg^{-1} greater grain Zn concentration than the notional baseline grain Zn concentration of 25 mg kg^{-1} [22].

There was no evidence of a yield dilution effect on grain Zn concentration in this study. Our result is therefore consistent with findings of Welch and Graham [47] and Joshi *et al.* [42], who reported no trade-off between grain Zn and grain yield concentration in wheat. This observation supports the argument that locally adapted, high yielding, genotypes have potential value for developing Zn-biofortified varieties for a wide range of soil conditions than reported previously. In contrast, other studies reported negative correlation of grain Zn with grain yield concentration in wheat [48, 49]. Oury *et al.* [49], reported lower grain Zn concentrations in high yielding genotypes which may have been due to yield dilution. It is important to continue to monitor grain Zn concentration in the wider context of yield and yield component traits in breeding programmes, especially given that grain yields in the region are relatively low.

Variation in plant-available Zn in soils is likely to represent a large proportion of environmental sources of variation in grain Zn concentration [11, 50, 51, 52]. Most of the soils in the present study were Zn deficient, albeit based on the use of a $\text{Ca}(\text{NO}_3)_2$ soil extraction to assess Zn-availability rather than the standard diethylene triamine pentaacetic acid (DTPA) method. Karami *et al.* [50], Joshi *et al.* [42] and Velu *et al.* [43] reported lower grain Zn concentrations in wheat genotypes when grown under Zn-deficient soil conditions. Soil Zn concentrations can be increased through the use of fertilisers [11, 15, 16]. Zinc can be applied with granular fertilisers to soil or as a foliar spray. Application of Zn fertiliser in granular form has produced increases in both grain yield and grain Zn concentration. However, application of Zn fertiliser as a foliar spray can reduce the amount Zn fertiliser needed in granular form and cereals are more responsive in terms of increase in grain Zn concentration, albeit at higher application costs. It is possible to reduce the cost of application by combining foliar application of Zn with

pesticide applications [6, 17, 53]. Based on a wide survey of farmers, application of basal Zn fertilisers increased grain yield in wheat in Indo-Gangetic area of Sindh and Punjab Provinces of Pakistan [16]. A novel aspect of this study is that the same panel was grown in an extremely diverse range of hostile soils that will have complex trace element geochemistry. For example, sodic soils at the Kumarganj site had a pH value of 9.5, which is much higher than in the arable soils routinely studied in crop trials. At such sites, it is likely that reclamation using addition of gypsum (calcium sulphate, $\text{CaSO}_4 \cdot 2\text{H}_2\text{O}$), and farm yard manure (FYM) coupled with measures to offset soil structural damage and impeded drainage would be needed to optimise grain yields and quality.

Increases in grain Zn concentration may also help to increase the grain Ca, Cu, Fe, K, Mg, Mn, Mo, P, and S concentrations given the observed positive correlation of grain Zn with these elements. The ionome data of high-Zn wheat varieties released by HarvestPlus in India and Pakistan is not available because the standard HarvestPlus method to measure the whole grain Zn concentration is X-ray fluorescence (XRF) [54]. However, our results are consistent with those of Pandey *et al.* [55], who reported a positive relationship between grain Zn concentrations and Ca, Cu, Fe, K, Mg, P and S concentrations in 150 bread wheat lines collected from India and Turkey. Many researchers also reported relationships between grain Zn and Fe [56, 23, 57], P [58, 59] and S [60]. Ozkan *et al.* [61] reported a major QTL on chromosome 5 which increased the grain Fe, Zn, Cu and Mn concentration in *Triticum monococcum* wheat genotypes. Velu *et al.* [57] reported co-localisation of grain Zn and Fe QTLs on 2B chromosomes which may help to simultaneous improvement of both the micronutrients. Similarly, McDonald and Mousavvi [60] showed that slightly increase in sulphur concentration increased the grain Zn concentration. It may be due to increase in S containing amino acid methionine, which further increased the level of phytosiderophores and nicotinamide, involved in uptake and translocation process of zinc. However, P is an important component of phytic acid (PA) which affects the bioavailability of Zn [59]. Therefore, the role of PA should be considered concomitantly in breeding programs intended to increase the grain Zn concentration in wheat genotypes.

Taken together, the results from this study show considerable potential for genetic improvement for Indian wheat genotypes. Some elite varieties (e.g. Kharchia 65) could be useful sources of variation that can be used at a wide range of sites to cross with new Zn-biofortified lines. This study also reveals the wealth of information that can be gleaned from studying the wider grain ionome across sites with a wide range of conditions, so that both breeding and spatial approaches (e.g. site-specific crop selection, fertiliser-use, etc.) to improving diet quality can be deployed most effectively.

Supporting information

S1 Table. Element specific limits of detection (LOD) for concentration of 31 elements measured in grain of 36 Indian wheat genotypes by ICP-MS.

(PDF)

S2 Table. The grain mineral elements whose grain concentrations were below the limit of detection (LOD) values (highlighted in red). Elements highlighted in red excluded from data analyses.

(PDF)

S3 Table. Grain mineral concentrations (mg kg^{-1}) of 31 elements of 36 wheat genotypes grown at 5 sites in 2013–14 and at 6 sites in 2014–15 in India. Elements highlighted in red

excluded from analysis (values below than LOD) and values higher than mean+(5*SD) (highlighted in yellow) are removed from data before analysis.
(PDF)

S4 Table. Data of grain mineral composition traits (mg kg⁻¹) of 36 wheat genotypes grown at five sites in 2013–14 and at six sites in 2014–15 in India. Data below limit of detection (LOD) have been replaced by half LOD values and values above than mean+(5*SD) have been removed.
(PDF)

Acknowledgments

We would like to thank IIWBR (Karnal), UBKV (West Bengal) and NDU&T (Uttar Pradesh) and Dr Apurba K. Chowdhury, Dr Tapamay Dhar (UBKV), Dr Vinod Singh (NDUA&T) and all technical staff at all the sites. This work was supported by the Biotechnology and Biological Sciences Research Council [grant number BB/J011827/1], including a studentship to Jaswant S. Khokhar.

Author Contributions

Conceptualization: Jaswant Singh Khokhar, Scott D. Young, Martin R. Broadley.

Data curation: Jaswant Singh Khokhar, Scott D. Young.

Formal analysis: Jaswant Singh Khokhar.

Funding acquisition: Ian P. King.

Investigation: Martin R. Broadley.

Methodology: Jaswant Singh Khokhar, Lolita Wilson, Scott D. Young, Martin R. Broadley.

Project administration: Sindhu Sareen, Bhudeva Singh Tyagi, Ian P. King, Martin R. Broadley.

Resources: Jaswant Singh Khokhar, Sindhu Sareen, Bhudeva Singh Tyagi, Gyanendra Singh, Lolita Wilson, Scott D. Young, Martin R. Broadley.

Software: Jaswant Singh Khokhar.

Supervision: Sindhu Sareen, Bhudeva Singh Tyagi, Scott D. Young, Martin R. Broadley.

Validation: Jaswant Singh Khokhar, Scott D. Young.

Visualization: Jaswant Singh Khokhar.

Writing – original draft: Jaswant Singh Khokhar.

Writing – review & editing: Sindhu Sareen, Bhudeva Singh Tyagi, Gyanendra Singh, Ian P. King, Scott D. Young, Martin R. Broadley.

References

1. Cakmak I, Ozkan H, Braun HJ, Welch R, Romheld V. Zinc and iron concentration in seeds of wild, primitive and modern wheats. *Food Nutr Bull.* 2000; 21(4): 401–403.
2. Broadley MR, White PJ, Hammond JP, Zelko I, Lux A. Zinc in plants. *New Phytol.* 2007; 173(4):677–702. <https://doi.org/10.1111/j.1469-8137.2007.01996.x> PMID: 17286818.
3. Graham RD, Knez M, Welch RM. How much nutritional iron deficiency in humans globally is due to an underlying zinc deficiency? In: Sparks DL, editor. *Advances in Agronomy.* San Diego: Elsevier Academic Press; 2012. pp. 1–40.

4. Wessells KR, Brown KH. Estimating the global prevalence of zinc deficiency: Results based on zinc availability in national food supplies and the prevalence of stunting. *PLoS One*. 2012; 7(11): e50568. <https://doi.org/10.1371/journal.pone.0050568> PMID: 23209782
5. Kumssa DB, Joy EJM, Ander EL, Watts MJ, Young SD, Walker S, et al. Dietary calcium and zinc deficiency risks are decreasing but remain prevalent. *Sci Rep*. 2015; 5:10974. <https://doi.org/10.1038/srep10974> PMID: 26098577
6. Gregory PJ, Wahbi A, Adu-Gyamfi J, Heiling M, Gruber R, Joy EJM, et al. Approaches to reduce zinc and iron deficits in food systems. *Glob Food Sec*. 2017. <https://doi.org/10.1016/j.gfs.2017.03.003>
7. Hess SY, King JC. Effects of maternal zinc supplementation on pregnancy and lactation outcomes. *Food Nutr Bull*. 2009; 30(1):S60–S78. <https://doi.org/10.1177/15648265090301S105> PMID: 19472602
8. King JC, Brown KH, Gibson RS, Krebs NF, Lowe NM, Siekmann JH, et al. Biomarkers of nutrition for development (BOND)- Zinc review. *J Nutr*. 2016; 146(4):858S–885S. <https://doi.org/10.3945/jn.115.220079> PMID: 26962190.
9. Shiferaw B, Smale M, Braun H J, Duveiller E, Reynolds M, Muricho G. Crops that feed the world 10. Past successes and future challenges to the role played by wheat in global food security. *Food Secur*. 2013; 5(3):291–317. <https://doi.org/10.1007/s12571-013-0263-y>
10. Black RE, Victora CG, Walker SP, Bhutta ZA, Christian P, de Onis M, et al. Maternal and child undernutrition and overweight in low-income and middle-income countries. *Lancet*. 2013; 382(9890):427–451. [https://doi.org/10.1016/S0140-6736\(13\)60937-X](https://doi.org/10.1016/S0140-6736(13)60937-X) PMID: 23746772
11. Cakmak I. Enrichment of cereal grains with zinc: Agronomic or genetic biofortification? *Plant Soil*. 2008; 302(1):1–17. <https://doi.org/10.1007/s11104-007-9466-3>
12. White PJ, Broadley MR. Biofortification of crops with seven mineral elements often lacking in human diets—iron, zinc, copper, calcium, magnesium, selenium and iodine. *New Phytol*. 2009; 182(1):49–84. <https://doi.org/10.1111/j.1469-8137.2008.02738.x> PMID: 19192191
13. Kutman UB, Yildiz B, Ozturk L, Cakmak I. Biofortification of durum wheat with zinc through soil and foliar applications of nitrogen. *Cereal Chem*. 2010; 87:1–9. <https://doi.org/10.1094/CCHEM-87-1-0001>
14. Zhang Y, Song Q, Yan J, Tang J, Zhao R, Zhang Y, et al. Mineral element concentrations in grains of Chinese wheat cultivars. *Euphytica*. 2010; 174(3):303–313. <https://doi.org/10.1007/s10681-009-0082-6>
15. Joy EJM, Stein AJ, Young SD, Ander EL, Watts MJ, Broadley MR. Zinc-enriched fertilisers as a potential public health intervention in Africa. *Plant Soil*. 2015; 389(1–2):1–24. <https://doi.org/10.1007/s11104-015-2430-8>
16. Joy EJM, Ahmad W, Zia MH, Kumssa DB, Young SD, Ander EL, et al. Valuing increased zinc (Zn) fertilizer-use in Pakistan. *Plant Soil*. 2017; 411(1):139–150. <https://doi.org/10.1007/s11104-016-2961-7>
17. Wang Y-H, Zpu C-Q, Mirza Z, Li H, Zhang Z-Z, Li D-P et al. Cost of agronomic biofortification of wheat with zinc in China. *Agron Sustain Dev*. 2016; 36(3):44. <https://doi.org/10.1007/s13593-016-0382-x>
18. Guo J X, Feng XM, Hu XY, Tian GL, Ling N, Wang JH, et al. Effect of soil zinc availability, nitrogen fertilizer rate and zinc fertilizer application method on zinc biofortification of rice. *J Agric Sci*. 2016; 154(4):584–597. <https://doi.org/10.1017/S0021859615000441>
19. Graham RD, Welch RM, Bouis HE. Addressing micronutrient malnutrition through enhancing the nutritional quality of staple foods: Principles, perspectives and knowledge gaps. In: Sparks DL, editor. *Advances in Agronomy*. San Diego: Elsevier Academic Press; 2001. pp. 77–142.
20. Stein AJ, Nestel P, Meenakshi JV, Qaim M, Sachdev HP, Bhutta ZA. Plant breeding to control zinc deficiency in India: how cost-effective is biofortification? *Public Health Nutr*. 2007; 10(5):492–501. <https://doi.org/10.1017/S1368980007223857> PMID: 17411470.
21. Graham RD, Welch RM, Saunders DA, Ortiz-Monasterio I, Bouis HE, Bonierbale M, et al. Nutritious subsistence food systems. In: Sparks DL, editor. *Advances in Agronomy*. San Diego: Elsevier Academic Press; 2007. p. 1–74.
22. Singh R, Velu G. Zinc-biofortified wheat: harnessing genetic diversity for improved nutritional quality. *Science Brief: Biofortification*, No. 1 (May 2017). CIMMYT, HarvestPlus, and the Global Crop Diversity Trust. Bonn, Germany.
23. Velu G, Singh RP, Huerta-Espino J, Pena RJ, Arun B, Mahendru-Singh A, et al. Performance of biofortified spring wheat genotypes in target environments for grain zinc and iron concentrations. *Field Crops Res*. 2012; 137:261–267. <https://doi.org/10.1016/j.fcr.2012.07.018>
24. Velu G, Ortiz-Monasterio I, Cakmak I, Hao Y, Singh RP. (2014). Biofortification strategies to increase grain zinc and iron concentrations in wheat. *J Cereal Sci*. 2014; 59(3):365–372. <https://doi.org/10.1016/j.jcs.2013.09.001>
25. Velu G, Singh R, Arun B, Mishra V, Tiwari C, Joshi A, et al. Reaching out to farmers with high zinc wheat varieties through public-private partnerships—An experience from Eastern-Gangetic Plains of India. *AFTNSOJ*. 2015; 1(3):73–75.

26. Khokhar JS, Sareen S, Tyagi BS, Singh G, Chowdhury AK, Dhar T, et al. Characterising variation in wheat traits under hostile soil conditions in India. *PLoS One*. 2017; 12(6):e0179208. <https://doi.org/10.1371/journal.pone.0179208> PMID: 28604800
27. Anonymous. Progress Report of the All India Coordinated Wheat & Barley Improvement Project 2015–16. In: Tiwari V, Chatrath R, Singh G, Tiwari R, Tyagi BS, Kumar R, et al., editors. Karnal: ICAR-Indian Institute of Wheat & Barley Research; 2016. p. 258.
28. Trethowan RM. Breeding wheat for high iron and zinc at CIMMYT: State of the art, challenges and future prospects. International Wheat Conference; 2005; Mar del Plata (Argentina).
29. Mallikarjuna MG, Thirunavukkarasu N, Hossain F, Bhat JS, Jha SK, Rathore A, et al. Stability performance of inductively coupled plasma mass spectrometry-phenotyped kernel minerals concentration and grain yield in maize in different agro-climatic zones. *PLoS One*. 2015; 10(9): e0139067. <https://doi.org/10.1371/journal.pone.0139067> PMID: 26406470
30. Manickavelu A, Hattori T, Yamaoka S, Yoshimura K, Kondou Y, Onogi A, et al. Genetic nature of elemental contents in wheat grains and its genomic prediction: toward the effective use of wheat landraces from Afghanistan. *PLoS One*. 2017; 12(1): e0169416. <https://doi.org/10.1371/journal.pone.0169416> PMID: 28072876.
31. Salt DE, Baxter I, Lahner B. Ionomics and the study of the plant ionome. *Annu Rev Plant Biol*. 2008; 59:709–33. <https://doi.org/10.1146/annurev.arplant.59.032607.092942> PMID: 18251712.
32. Qaswar M, Hussain S, Rengel Z. Zinc fertilisation increases grain zinc and reduces grain lead and cadmium concentrations more in zinc-biofortified than standard wheat cultivar. *Sci Total Environ*. 2017; 605–606:454–60. <https://doi.org/10.1016/j.scitotenv.2017.06.242> PMID: 28672234.
33. Simmons RW, Pongsakul P, Chaney RL, Saiyasitpanich D, Klinphoklap S, Nobuntou W. The relative exclusion of zinc and iron from rice grain in relation to rice grain cadmium as compared to soybean: Implications for human health. *Plant Soil*. 2003; 257(1):163–70. <https://doi.org/10.1023/a:1026242811667>
34. Sebastian A, Prasad MNV. Cadmium minimization in rice. A review. *Agron Sustain Dev*. 2014; 34(1):155–73. <https://doi.org/10.1007/s13593-013-0152-y>
35. Xing W, Zhang H, Scheckel KG, Li L. Heavy metal and metalloid concentrations in components of 25 wheat (*Triticum aestivum*) varieties in the vicinity of lead smelters in Henan province, China. *Environ Monit Assess*. 2015; 188(1):23. <https://doi.org/10.1007/s10661-015-5023-3> PMID: 26661959.
36. Hirzel J, Retamal-Salgado J, Walter I, Matus I. Cadmium accumulation and distribution in plants of three durum wheat cultivars under different agricultural environments in Chile. *J Soil Water Conserv*. 2017; 72(1):77–88. <https://doi.org/10.2489/jswc.72.1.77>
37. Anjos C, Magalhães MCF, Abreu MM. Metal (Al, Mn, Pb and Zn) soils extractable reagents for available fraction assessment: Comparison using plants, and dry and moist soils from the Braçal abandoned lead mine area, Portugal. *J Geochem Explor*. 2012; 113:45–55. <https://doi.org/10.1016/j.gexplo.2011.07.004>
38. Ray P, Singhal SK, Datta SP, Rattan RK. Evaluation of suitability of chemical extractants for assessing available zinc in acid and alkaline soils amended with farmyard manure and sludge. *Agrochimica*. 2013; 57(4):347–60.
39. Zhao FJ, Su YH, Dunham SJ, Rakszegi M, Bedo Z, McGrath SP, et al. Variation in mineral micronutrient concentrations in grain of wheat lines of diverse origin. *J Cereal Sci*. 2009; 49(2):290–295. <https://doi.org/10.1016/j.jcs.2008.11.007>
40. Morgounov A, Gomez-Becerra HF, Abugalieva A, Dzhusunova M, Yessimbekova M, Muminjanov H, et al. Iron and zinc grain density in common wheat grown in Central Asia. *Euphytica*. 2007; 155(1–2):193–203. <https://doi.org/10.1007/s10681-006-9321-2>
41. Chen X-P, Zhang Y-Q, Tong Y-P, Xue Y-F, Liu D-Y, Zhang W, et al. Harvesting more grain zinc of wheat for human health. *Sci Rep*. 2017; 7(1):7016. <https://doi.org/10.1038/s41598-017-07484-2> PMID: 28765540.
42. Joshi AK, Crossa J, Arun B, Chand R, Trethowan R, Vargas M, et al. Genotype x environment interaction for zinc and iron concentration of wheat grain in eastern Gangetic plains of India. *Field Crops Res*. 2010; 116(3):268–277. <https://doi.org/10.1016/j.fcr.2010.01.004>
43. Velu G, Crossa J, Singh RP, Hao YF, Dreisigacker S, Perez-Rodriguez P, et al. Genomic prediction for grain zinc and iron concentrations in spring wheat. *Theor Appl Genet*. 2016; 129(8):1595–1605. <https://doi.org/10.1007/s00122-016-2726-y> PMID: 27170319
44. Swamy BPM, Rahman MA, Inabangan-Asilo MA, Amparado A, Manito C, Chadha-Mohanty P, et al. Advances in breeding for high grain zinc in rice. *Rice*. 2016; 9(1):49. <https://doi.org/10.1186/s12284-016-0122-5> PMID: 27671163

45. Munns R, James RA, Lauchli A. Approaches to increasing the salt tolerance of wheat and other cereals. *J Exp Bot.* 2006; 57(5):1025–43. <https://doi.org/10.1093/jxb/erj100> PMID: 16510517.
46. De Sousa CNA. Classification of Brazilian wheat cultivars for aluminium toxicity in acid soils. *Plant Breed.* 1998; 117(3):217–21. <https://doi.org/10.1111/j.1439-0523.1998.tb01929.x>
47. Welch RM, Graham RD. Breeding for micronutrients in staple food crops from a human nutrition perspective. *J Exp Bot.* 2004; 55(396):353–364. <https://doi.org/10.1093/jxb/erh064> PMID: 14739261
48. Monasterio I, Graham RD. Breeding for trace minerals in wheat. *Food Nutr Bull.* 2000; 21(4):392–396. <https://doi.org/10.1177/156482650002100409>
49. Oury FX, Leenhardt F, Rémésy C, Chanliaud E, Duperrier B, Balfourier F, et al. Genetic variability and stability of grain magnesium, zinc and iron concentrations in bread wheat. *Eur J Agron.* 2006; 25(2):177–185. <https://doi.org/10.1016/j.eja.2006.04.011>
50. Karami M, Afyuni M, Khoshgofarmanesh AH, Papritz A, Schulin R. Grain zinc, iron, and copper concentrations of wheat grown in central Iran and their relationships with soil and climate variables. *J Agric Food Chem.* 2009; 57(22):10876–10882. <https://doi.org/10.1021/jf902074f> PMID: 19883069
51. White PJ, Greenwood DJ. Properties and management of cationic elements for crop growth. In: Gregory PJ, Nortcliff S, editors. *Soil Conditions and Plant Growth*. 12 ed: Blackwell Publishing Ltd; 2013. p. 160–94.
52. Rengel Z. Availability of Mn, Zn and Fe in the rhizosphere. *J Soil Sci Plant Nut.* 2015; 15(2):397–409.
53. Ram H, Rashid A, Zhang W, Duarte AP, Phattarakul N, Simunji S, et al. Biofortification of wheat, rice and common bean by applying foliar zinc fertilizer along with pesticides in seven countries. *Plant Soil.* 2016; 403(1–2):389–401. <https://doi.org/10.1007/s11104-016-2815-3>
54. Paltridge NG, Milham PJ, Ortiz-Monasterio JI, Velu G, Yasmin Z, Palmer LJ, et al. Energy-dispersive X-ray fluorescence spectrometry as a tool for zinc, iron and selenium analysis in whole grain wheat. *Plant Soil.* 2012; 361(1):261–9. <https://doi.org/10.1007/s11104-012-1423-0>
55. Pandey A, Khan MK, Hakki EE, Thomas G, Hamurcu M, Gezgin S, et al. Assessment of genetic variability for grain nutrients from diverse regions: potential for wheat improvement. *Springerplus.* 2016; 5(1):1912. <https://doi.org/10.1186/s40064-016-3586-2> PMID: 27867819
56. Guzman C, Medina-Larque AS, Velu G, Gonzalez-Santoyo H, Singh RP, Huerta-Espino J, et al. Use of wheat genetic resources to develop biofortified wheat with enhanced grain zinc and iron concentrations and desirable processing quality. *J Cereal Sci.* 2014; 60(3):617–622. <https://doi.org/10.1016/j.jcs.2014.07.006>
57. Velu G, Tutus Y, Gomez-Becerra HF, Hao Y, Demir L, Kara R, et al. QTL mapping for grain zinc and iron concentrations and zinc efficiency in a tetraploid and hexaploid wheat mapping populations. *Plant Soil.* 2017; 411(1):81–99. <https://doi.org/10.1007/s11104-016-3025-8>
58. Shi R, Li H, Tong Y, Jing R, Zhang F, Zou C. Identification of quantitative trait locus of zinc and phosphorus density in wheat (*Triticum aestivum* L.) grain. *Plant Soil.* 2008; 306(1):95–104. <https://doi.org/10.1007/s11104-007-9483-2>
59. Stangoulis JCR, Huynh B-L, Welch RM, Choi E-Y, Graham RD. Quantitative trait loci for phytate in rice grain and their relationship with grain micronutrient content. *Euphytica.* 2007; 154(3):289–94. <https://doi.org/10.1007/s10681-006-9211-7>
60. McDonald GK, Mousavvi Nik M. Increasing the supply of sulphur increases the grain zinc concentration in bread and durum wheat. 2009. The Proceedings of the International Plant Nutrition Colloquium XVI. UC Davis: Department of Plant Science, UC Davis. Retrieved from: <http://escholarship.org/uc/item/43k2r1h8>.
61. Ozkan H, Brandolini A, Torun A, Altintas S, Eker S, Kilian B, et al. Natural variation and identification of microelements content in seeds of einkorn wheat (*Triticum monococcum*). In: Buck HT, Nisi JE, Salomón N, editors. *Wheat Production in Stressed Environments: Proceedings of the 7th International Wheat Conference, 27 November–2 December 2005, Mar del Plata, Argentina*. Dordrecht: Springer Netherlands; 2007. p. 455–62.