

# The presence and regulation of connective tissue growth factor in the human endometrium

J.A. Maybin, J. Barcroft, U. Thiruchelvam, N. Hirani, H.N. Jabbour, and H.O.D. Critchley\*

MRC Centre for Reproductive Health, The Queen's Medical Research Institute, 47 Little France Crescent, Edinburgh EH16 4TJ, UK

\*Correspondence address. Tel: +131-242-6439/6858; Fax: +131-242-6441; E-mail: hilary.critchley@ed.ac.uk

Submitted on July 26, 2011; resubmitted on December 5, 2011; accepted on December 21, 2011

**BACKGROUND:** The human endometrium efficiently repairs each month after menstruation. The mechanisms involved in this repair process remain undefined. Aberrations in endometrial repair may lead to the common disorder of heavy menstrual bleeding. We hypothesized that connective tissue growth factor (CTGF) is increased at the time of endometrial repair post-menses and that this increase is regulated by prostaglandins (PGs) and hypoxic conditions present during menstruation.

**METHODS AND RESULTS:** Examination of 41 endometrial biopsies from 5 stages of the menstrual cycle revealed maximal CTGF mRNA expression (using quantitative RT–PCR) at menstruation and peak protein levels during the proliferative phase. CTGF was immunolocalized to epithelial and stromal cells, with intense staining of occasional stromal cells during the proliferative phase. Dual immunohistochemistry identified these cells as macrophages. Treatment of endometrial epithelial cells with 100 nM PGE<sub>2</sub>, PGF<sub>2α</sub> or hypoxia (0.5% O<sub>2</sub>) revealed a significant increase in CTGF mRNA expression ( $P < 0.01$  for all, versus vehicle control). Cells treated simultaneously with PGE<sub>2</sub> and hypoxia revealed a synergistic increase in CTGF expression ( $P < 0.05$  versus PGE<sub>2</sub> or hypoxia alone) and maximal secreted CTGF protein levels ( $P < 0.05$  versus control).

**CONCLUSIONS:** CTGF is increased in the human endometrium at the time of endometrial repair post-menses. The increase in CTGF may be mediated by PG production and the transient hypoxic episode observed in the endometrium at menstruation.

**Key words:** menstruation / repair / prostaglandins / hypoxia / macrophage

## Introduction

The human endometrium is an excellent physiological model of cyclical tissue injury and repair. If pregnancy does not occur, the corpus luteum regresses in the late secretory phase and progesterone levels decline. This withdrawal of progesterone triggers an inflammatory response in the endometrium, which culminates in the menstrual shedding of the functional endometrial layer (Critchley *et al.*, 2001; King and Critchley, 2010). Subsequent repair is very efficient, occurring without scarring or loss of function. However, the precise mechanisms involved remain poorly understood. Observational studies have shown that endometrial repair begins on Day 2, during active bleeding, and full coverage of the lumen is usually achieved by Day 6 (Ludwig and Spornitz, 1991). In addition, the endometrium is shed in a piecemeal fashion at menstruation with simultaneous repair occurring in adjacent areas (Garry *et al.*, 2009). These studies highlight that factors involved in the initiation of endometrial repair 'post-menses' must be present at the time of menses itself.

Connective tissue growth factor (CTGF) is a multifunctional growth factor that is expressed at high levels during wound repair and at sites of connective tissue formation (Igarashi *et al.*, 1993). Its biological effects include chemotaxis, differentiation, extracellular matrix (ECM) production, angiogenesis, tumour growth, wound healing and fibrosis (Igarashi *et al.*, 1993; Frazier *et al.*, 1996; Oemar *et al.*, 1997; Hishikawa *et al.*, 2000; Shimo *et al.*, 2001; Ivkovic *et al.*, 2003). It is, therefore, an attractive candidate for endometrial repair. CTGF protein and mRNA have previously been detected in the human endometrium by immunohistochemistry and northern blot analysis, respectively (Uzumcu *et al.*, 2000). CTGF was localized to epithelial and endothelial cells in proliferative and secretory phase biopsies. Whereas, in contrast, endometrial stromal cells were only stained after decidualization in the late secretory phase (Uzumcu *et al.*, 2000). Unfortunately, no menstrual phase biopsies were included in this study, but the presence of CTGF in the normal cycling endometrium suggests that it may facilitate tissue repair and remodelling after menses.

Premenstrual progesterone withdrawal increases levels of cyclo-oxygenase (COX) 2 enzyme in the endometrium (Critchley *et al.*, 1999), which stimulates the synthesis of endometrial prostaglandins (PGs), including prostaglandin E<sub>2</sub> (PGE<sub>2</sub>) and F<sub>2α</sub> (PGF<sub>2α</sub>). PGF<sub>2α</sub> is emerging as a potential key player in the initiation of expression of endometrial repair factors. PGs have been demonstrated to induce a host of endometrial angiogenic factors including vascular endothelial growth factor, adrenomedullin, fibroblast growth factor-2 and interleukin-8 (Keightley *et al.*, 2010; Maybin *et al.*, 2011a,b,c). Functionally, PGF<sub>2α</sub> has been shown to increase endometrial epithelial cell proliferation in culture (Milne and Jabbour, 2003) and is known to induce vasoconstriction of endometrial spiral arterioles (Baird *et al.*, 1996). There is evidence that this vasoconstriction results in a transient, local hypoxic insult in the uppermost endometrial layer at menstruation (Critchley *et al.*, 2006; Fan *et al.*, 2008).

We hypothesized that CTGF is increased at the time of endometrial repair and regeneration and that this putative repair factor is regulated by PGs and hypoxia.

## Materials and Methods

### Human endometrial tissue collection

Endometrial biopsies ( $n = 41$ ) were collected with a suction curette (Pipelle, Laboratoire CCD, Paris, France) from women (median age: 42 years, range: 22–50) attending gynaecological out-patient departments across National Health Service Lothian. All women reported regular menstrual cycles (21–35 days) and no exogenous hormone exposure for 3 months prior to biopsy. Women with large fibroids (>3 cm) or endometriosis were excluded. Tissue was divided and (i) placed in RNA later, RNA stabilization solution [Ambion (Europe) Ltd., Warrington, UK], (ii) fixed in neutral-buffered formalin for wax embedding and (iii) placed in phosphate-buffered saline for *in vitro* culture. Biopsies were consistent for (i) histological dating using criteria of Noyes *et al.* (1950), (ii) reported last menstrual period and (iii) serum progesterone and estradiol concentrations at time of biopsy (Table I). Written consent was obtained from participants and ethical approval granted from Lothian Research Ethics Committee.

### Immunohistochemistry

Three micrometres of paraffin sections was dewaxed and rehydrated. Antigen retrieval was undertaken by microwaving sections in a pH 6 antigen-retrieval buffer (Vector Laboratories, Peterborough, UK). Endogenous peroxidase activity was blocked by 3% hydrogen peroxide. Sections were sequentially incubated in avidin and biotin (Vector

Laboratories) and protein block (Dako, Cambridge, UK). Goat polyclonal CTGF antibody (Santa Cruz Biotechnology, CA, USA) was applied overnight at 4°C. Negative controls were incubated with primary antibody pre-absorbed in antigen (CTGF peptide, Santa Cruz). Biotinylated horse anti-goat secondary antibody was used at 1:200. Avidin–biotin–peroxidase complex (ABC-Elite, Vector Laboratories) was applied for 30 min and liquid diaminobenzidine kit (Zymed Laboratories, San Francisco, CA, USA) used for detection. The reaction was stopped with distilled water and the sections were counterstained with haematoxylin, dehydrated and mounted with Pertex (Cellpath plc, Hemel Hempstead, UK).

### Dual staining immunohistochemistry demonstrating co-localization of CD68 and CTGF

Endometrial sections underwent dewaxing, rehydration, antigen retrieval and treatment with 3% hydrogen peroxidase as above. Normal donkey serum was used as a protein block and the sections were incubated with mouse monoclonal CD68 (a pan-macrophage antigen) antibody (Dako, Glostrup, Denmark) at a 1 in 1000 dilution overnight at 4°C. Donkey anti-mouse peroxidase secondary antibody (Abcam, Cambridge, UK) at a 1:750 dilution was applied for 30 min followed by incubation with TSA™ fluorescein tyramide system (Perkin Elmer, Waltham, MA, USA) for 10 min. The sections were incubated with normal donkey serum for 10 min followed by goat polyclonal CTGF antibody (Santa Cruz Biotechnology) at a 1 in 100 dilution overnight at 4°C. Alexa 546 donkey anti-goat secondary antibody (Invitrogen, Paisley, UK) was applied for 1 h, followed by a 4',6-diamidino-2-phenylindole stain (Sigma, Dorset, UK) for 10 min. Sections were then mounted with permaflour (Thermo Scientific, Waltham, MA, USA) and analysed with a Zeiss LSM710 confocal microscope system.

### Semi-quantitative histoscore of endometrial CTGF expression

Localization and intensity of immunostaining was evaluated blindly by two independent observers using a semi-quantitative scoring system (Aas-mundstad *et al.*, 1992). The intensity of staining was graded with a three-point scale (0 = no staining, 1 = mild staining and 2 = strong staining). This was applied to the glands and stromal cells ( $n = 41$ ), as well as the surface epithelium where visualized ( $n = 36$ ). The percentage of tissue in each intensity scale was recorded. A value was derived for each of the cellular compartments by using the sum of these percentages after multiplication by the intensity of staining.

**Table I** Human endometrial biopsies used in this study.

Stage of cycle	Number of biopsies	Mean serum estradiol levels, pmol/l (range)	Mean serum progesterone, nmol/l (range)
Menstrual	8	192.25 (55–514)	3.71* (1.24–10.59)
Proliferative	11	441.18 (79–1105)	2.81* (0.97–7.10)
Early secretory	7	497.50 (289–841)	59.60 (23.2–112.91)
Mid-secretory	8	638.00 (242–1949)	64.30 (25.47–114.53)
Late secretory	7	318.22 (59.09–819)	8.22* (1.06–16.95)

\*Significantly different from early and mid-secretory levels,  $P < 0.05$ .

## Culture of endometrial cells

Human Ishikawa endometrial adenocarcinoma cells (European collection of cell culture, Centre for Applied Microbiology, Wiltshire, UK) were stably transfected with the PGF<sub>2α</sub> receptor (FPS cells) or a PGE<sub>2</sub> receptor (EP2S cells) as previously described (Sales et al., 2004). To determine the effect of PGE<sub>2</sub>/F<sub>2α</sub> and/or hypoxic conditions on CTGF expression,  $\sim 4 \times 10^5$  FPS or EP2S cells were seeded in 6-well plates in Dulbecco's modified eagle's medium F-12 supplemented with 10% fetal calf serum, 1% penicillin/streptomycin and 200 µg/ml G418. The following day, cells were incubated in serum-free culture medium containing 8.4 µM indomethacin (COX enzyme inhibitor) for at least 16 h. Cells were then treated with vehicle or 100 nM PGE<sub>2</sub>/F<sub>2α</sub> and placed in normoxia (21% O<sub>2</sub>, 5% CO<sub>2</sub>, 37°C) or a sealed hypoxic chamber (0.5% O<sub>2</sub>, 5% CO<sub>2</sub>, 37°C) for 2, 4, 6, 8 or 24 h.

## Culture of endometrial tissue explants

Endometrial biopsies (proliferative  $n = 3$ , secretory  $n = 3$ ) were divided into four explants of equal size and incubated on raised platforms in 24-well plates, just covered with serum-free RPMI 1640 medium and 8.4 µM indomethacin for 16 h. One explant from each biopsy was then treated with vehicle in normoxia, one with 100 nM PGF<sub>2α</sub> in normoxia, one with 100 nM PGE<sub>2</sub> in normoxia and one with vehicle in hypoxia for 24 h.

## Quantitative RT-PCR

Expression of CTGF in endometrial tissue and cells was determined by quantitative RT-PCR (QRT-PCR, Taqman) analysis. Total RNA from cells and endometrial biopsies was extracted using the RNeasy Mini Kit (Qiagen Ltd, Sussex, UK) according to manufacturer's instructions. DNA contamination of samples was removed by DNA digestion during RNA purification. RNA samples were reverse transcribed using MgCl<sub>2</sub> (5.5 mM), deoxynucleotide triphosphates (0.5 mM each), random hexamers (2.5 µM), ribonuclease inhibitor (0.4 U/µl) and multiscribe reverse transcriptase (1.25 U/µl; all from PE Biosystems, Warrington, UK). Total RNA of 200 ng was added. A tube with no reverse transcriptase and a further tube with water were included as controls. To measure cDNA levels, a reaction mix was prepared containing Taqman buffer (5.5 mM MgCl<sub>2</sub>, 200 µM dATP, 200 µM dCTP, 200 µM dGTP and 400 µM deoxyuridine triphosphate), ribosomal 18S primers/probe (Applied Biosystems, Warrington, UK) and specific forward and reverse primers and probes: CTGF forward primer 5'-TGCACCGCCAAA-GATGGT-3', reverse primer 5'-GGCACGTGCACTGGTACTTG-3', probe 5'-CTCCCTGCATCTTCGGTGGTACGGT-3' was added for each PCR reaction. Negative controls (water instead of cDNA) were included in each run. PCR was carried out using an ABI Prism 7900 (Applied Biosystems). Samples were analysed in triplicate using Sequence Detector version 2.3 (PE Biosystems), using the comparative threshold method. Expression of target mRNA was normalized to RNA loading for each sample using the 18S ribosomal RNA as an internal standard. There was no significant change in 18S rRNA expression between normoxic and hypoxic conditions.

## CTGF protein quantification

CTGF secreted protein concentrations were measured using a human CTGF ELISA development kit (PeproTech, London, UK) according to manufacturer's instructions. Colour development was measured on an enzyme-linked immunosorbent assay plate reader at 405 nm. The minimum detectable concentration of CTGF was 63 pg/ml. There was no significant cross-reactivity for human bone morphogenetic protein-4, CTGF-L/WNT inducible signalling pathway (WISP)-2, cystine rich

protein-61, insulin-like growth factor (IGF)-I, IGF-II, IGF-BP1, nephroblastoma overexpressed gene, transforming growth factor-β, WISP-1 or WISP-3.

## Statistics

For endometrium from across the menstrual cycle, mRNA results were expressed as the quantity relative to a comparator sample of RNA from the liver. Significant differences in mRNA and protein were determined using Kruskal-Wallis non-parametric test with Dunn's multiple comparison post-test (Prism, version 4.02, GraphPad Software, Inc., San Diego, CA, USA). For cell culture, mRNA results are expressed as fold increase, where relative expression of mRNA after treatment was divided by the relative expression after vehicle treatment. Data are presented as mean  $\pm$  SEM and significant differences among raw data determined using one-way analysis of variance with Tukey's multiple comparison test. A value of  $P < 0.05$  was considered significant.

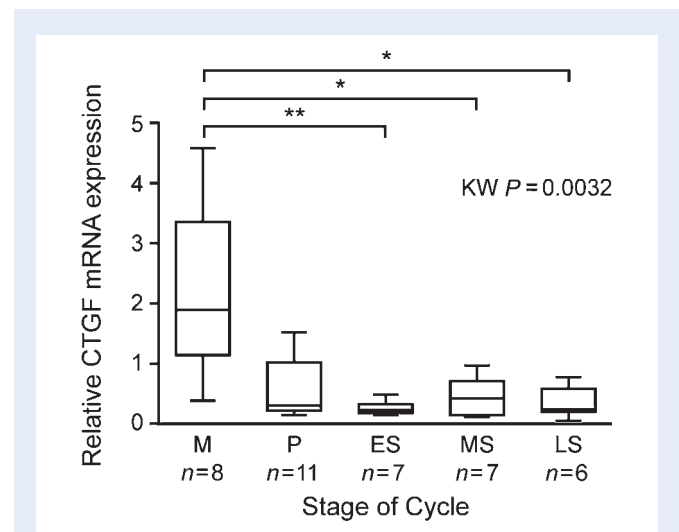
## Results

### Endometrial CTGF mRNA expression

Endometrial CTGF mRNA expression varied significantly across the menstrual cycle ( $P = 0.0032$ ; Fig. 1). Maximal CTGF mRNA expression was present in endometrium from the menstrual phase, with levels significantly greater than those found during the early ( $P < 0.01$ ), mid- ( $P < 0.05$ ) and late ( $P < 0.05$ ) secretory phases.

### Endometrial CTGF protein localization

CTGF was immunolocalized to the cytoplasm of surface epithelial, glandular epithelial, stromal and vascular endothelial cells or



**Figure 1** CTGF mRNA expression in human endometrial tissue from across the menstrual cycle. Values of CTGF are presented as relative to the 18S ribosomal RNA internal standard and to a sample of RNA from the liver as a comparator. M, menstrual; P, proliferative; ES, early secretory; MS, mid-secretory; LS, late secretory; KW, Kruskal-Wallis statistical test ( $*P < 0.05$ ,  $**P < 0.01$ ). Box and whisker plots: each box represents the 25th and 75th percentiles and the whiskers are the 10th and 90th percentiles. Horizontal lines represent the median.

endometrium from the menstrual and proliferative phases (Fig. 2A–D). There was an obvious reduction in staining intensity during the secretory phase (Fig. 2E and F). Intense staining of occasional cells in the stromal compartment of proliferative endometrium was observed (Fig. 2H). These cells were usually found in close proximity to the endometrial vasculature. Semi-quantitative scoring of immunohistochemical staining revealed significantly greater staining of the glandular epithelial, surface epithelial and stromal cells in proliferative phase endometrium when compared with mid-secretory endometrium ( $P < 0.001$ ,  $P < 0.001$ ,  $P < 0.01$  respectively; Fig. 3).

### Stromal CTGF was immunolocalized to macrophage cells

Proliferative endometrial tissue was subjected to dual staining immunohistochemistry for CTGF and CD68 (a pan-macrophage antigen). This revealed that the occasional stromal cells that were positively stained for CTGF also expressed CD68 (Fig. 4). Glandular epithelial cells were positively stained for CTGF but did not reveal dual staining for CD68.

### CTGF expression was regulated by PGs and hypoxia

A time course experiment in EP2S cells revealed a significant increase in CTGF mRNA expression on treatment with 100 nM PGE<sub>2</sub> compared with vehicle at 4 and 8 h ( $P < 0.01$ ) (Fig. 5A). Hypoxic conditions (0.5% O<sub>2</sub>) also significantly increased CTGF mRNA expression in EP2S cells at 2 h versus normoxic controls ( $P < 0.001$ ; Fig. 5B). Interestingly, in prolonged hypoxic conditions this up-regulation did not take place. When cells were treated with both PGE<sub>2</sub> and hypoxia for 2 h, there was a synergistic increase in CTGF mRNA expression that was significantly greater than that seen with either treatment alone ( $P < 0.05$ ; Fig. 5C). As maximal CTGF mRNA expression occurred between 2 and 4 h, the amount of CTGF protein secreted into culture supernatants was assessed by ELISA at a 6 h time point. CTGF secreted protein was below the level of detection of the ELISA in vehicle-treated cells but was significantly increased when EP2S cells were co-treated with PGE<sub>2</sub> and hypoxia ( $P < 0.05$ ; Fig. 5D).

Treatment of FPS cells with 100 nM PGF<sub>2α</sub> for 6 h resulted in significant up-regulation of CTGF mRNA expression versus vehicle-treated cells ( $P < 0.001$ ; Fig. 5E). As in EP2S cells, hypoxic conditions did not significantly increase CTGF mRNA expression at 6 h in FPS cells (Fig. 5E). Secreted protein levels in culture supernatants at 24 h demonstrated significant increases in CTGF protein over controls after treatment with PGF<sub>2α</sub> ( $P < 0.001$ ) (Fig. 5F).

Treatment of endometrial explants from the proliferative phase showed a modest increase in CTGF mRNA expression when explants were placed in hypoxic conditions ( $P < 0.05$ ; Fig. 5G). Explants from the secretory phase displayed a more marked increase in CTGF mRNA expression in hypoxic conditions ( $P < 0.001$ ; Fig. 5H). No significant increase in CTGF mRNA was observed when explants were treated with PGs, regardless of cycle stage.

## Discussion

These data demonstrate maximal expression of CTGF in the human endometrium during the menstrual and proliferative phases; a time

consistent with endometrial repair and regeneration. In addition, CTGF protein is localized to glandular epithelial cells and macrophages in the stromal cell compartment. Furthermore, this paper describes significant increases in CTGF mRNA and secreted protein in endometrial cells treated with PGs and/or hypoxia. These data provide a potential mechanism for the up-regulation of CTGF during the time of endometrial repair associated with menstruation.

### The location and timing of endometrial repair

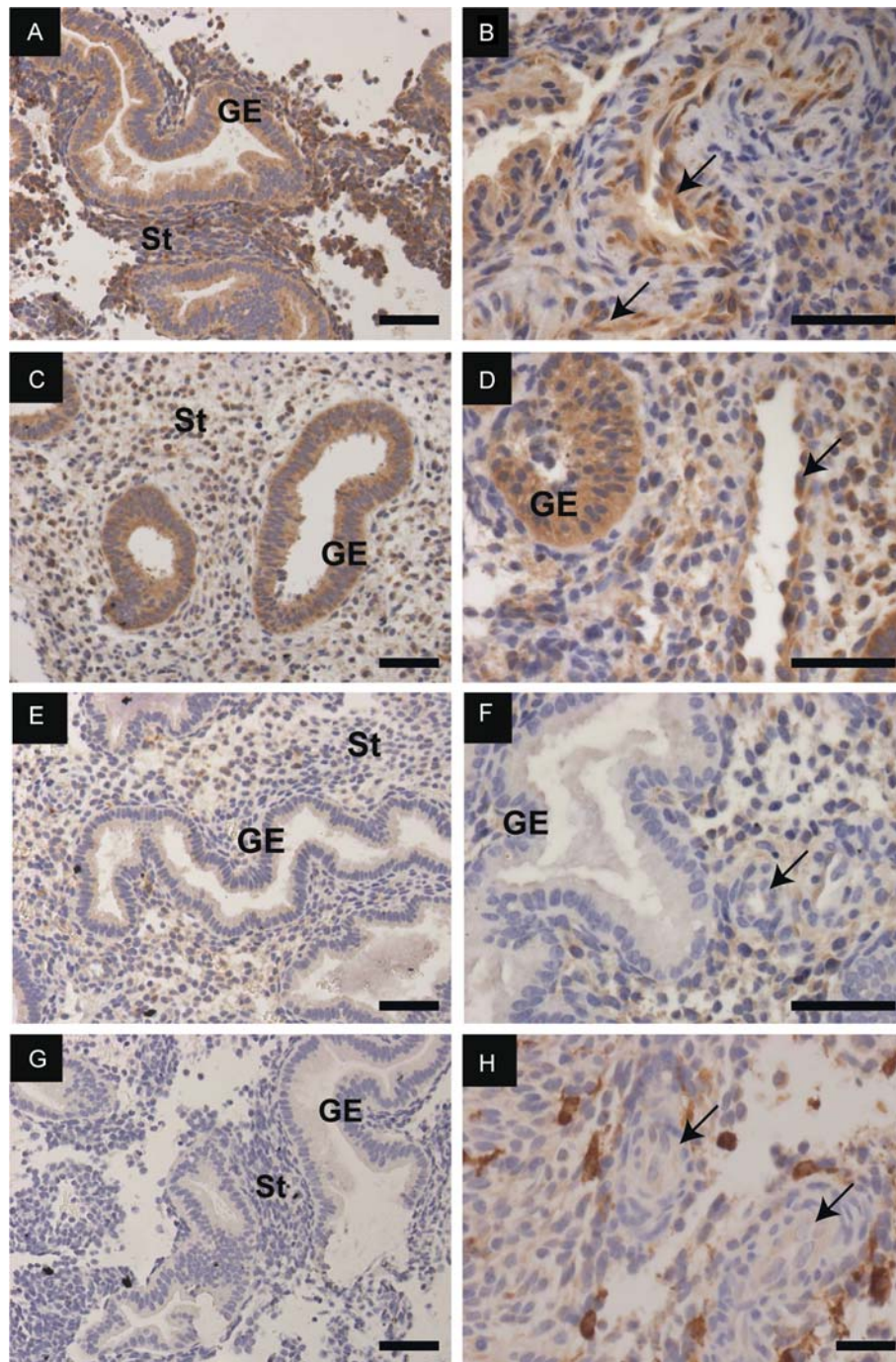
The data presented herein were generated from examination of endometrial biopsies collected with an endometrial sampler. The majority of endometrium collected with this method is from the functional layer. As this layer is sloughed off during menses, it has hitherto been assumed that endometrial repair was governed by factors present in the basal layer. An important recent study of menstrual endometrium from the superficial layer has revealed an increase in expression of genes associated with ECM biosynthesis in stromal cells from this upper layer when compared with those from the basal layer (Gaide Chevronnay *et al.*, 2009). This suggests that fragments of the functional layer of endometrium do make an active contribution to the endometrial repair process. Further, recent laser capture microdissection techniques have identified that both the stromal and epithelial cell compartments have an active role in this repair process (Gaide Chevronnay *et al.*, 2010).

Hysteroscopic, histological and scanning electron microscopy studies have documented the time course of endometrial repair. The endometrium is shed in a piecemeal fashion and repair commences in delineated areas while shedding occurs simultaneously in adjacent areas (Garry *et al.*, 2009). Therefore, examination of endometrial repair factors during the menstrual phase is essential when examining the process of repair in the context of menstruation.

### CTGF and endometrial repair

CTGF is a member of the CCN family of growth regulators (Brigstock, 2002) and has a putative role in endometrial repair. Data herein demonstrate maximal CTGF mRNA expression in menstrual phase endometrium. CTGF protein showed intensely positive immunohistochemical staining during the proliferative phase, which was significantly elevated in glandular epithelial, surface epithelial and stromal cells when compared with the mid-secretory phase. This is the first description of CTGF mRNA expression and protein staining intensity in human endometrium from all stages of the menstrual cycle, including at menstruation. A previous study immunolocalized human endometrial CTGF to epithelial, stromal and endothelial cells but did not examine endometrium from the menstrual phase (Uzumcu *et al.*, 2000). In contrast to findings described herein, Uzumcu *et al.* (2000) found minimal staining of stromal cells in proliferative tissue and maintenance of epithelial staining throughout the secretory phase. These differences may be explained by varying antibody specificities or by the classification of endometrial tissue studied. We have carefully staged the tissues used in this study based on reported day of cycle, serum ovarian hormone levels on the day of biopsy and histological dating. Other members of the CCN family also show significant variation in human endometrial expression across the cycle. The pro-angiogenic factor cysteine rich protein 61 (CYR61) was found



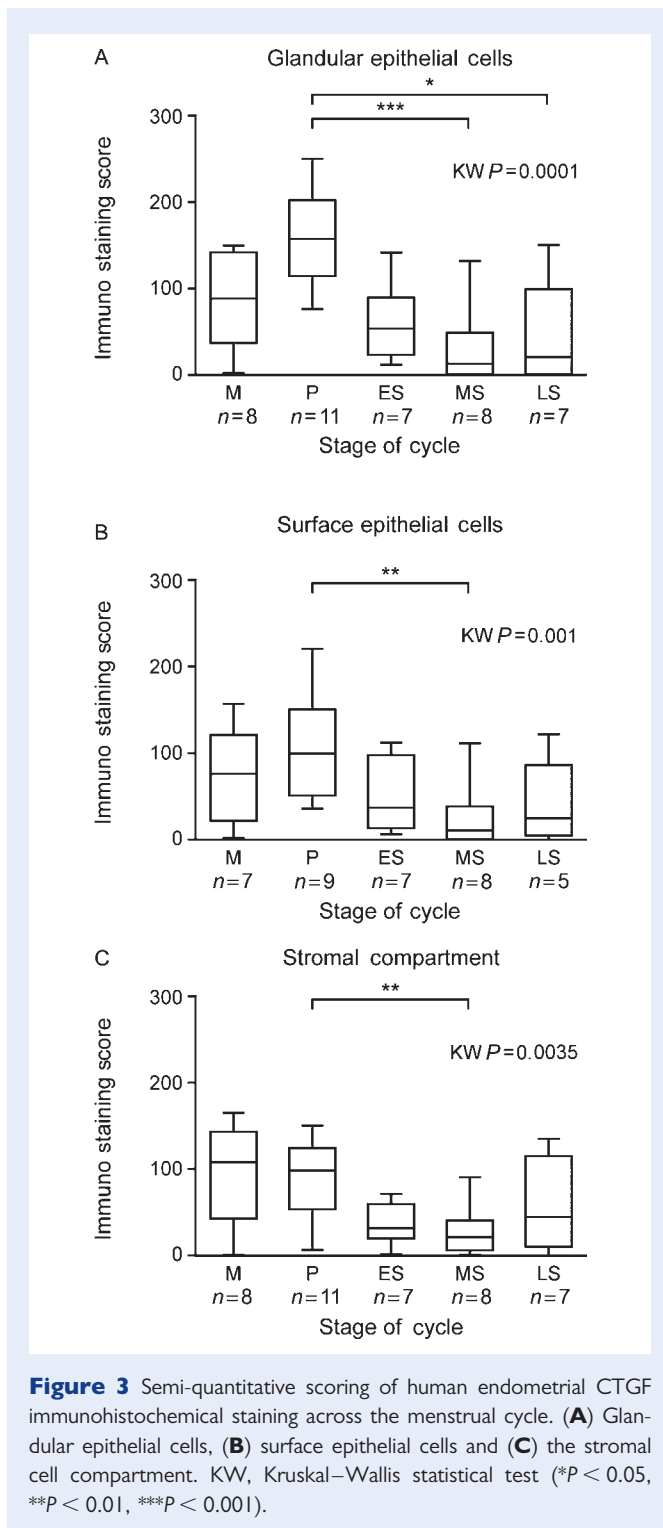


**Figure 2** CTGF immunohistochemical staining in human endometrium from across the menstrual cycle: (**A** and **B**) menstrual phase endometrium, (**C** and **D**) proliferative phase endometrium, (**E** and **F**) mid-secretory phase endometrium, (**G**) negative control menstrual endometrium, incubated with the primary antibody pre-absorbed with blocking peptide and (**H**) intense staining of occasional cells (arrows) in the stromal cell compartment of proliferative endometrium. Scale bar = 50  $\mu\text{m}$ . Arrows, endothelial cells; GE, glandular epithelial cells; St, stromal compartment.

to be significantly elevated during menses (Gashaw et al., 2008) and authors proposed it contributes to repair, growth and maturation of the endometrial vasculature after menstruation.

The mechanism by which CTGF exerts its effects remains undefined at a molecular level, therefore examination of receptor expression for this factor was not possible. CYR61 (a member of the CNN family)

has been shown to bind to integrin  $\alpha_v\beta_3$  to mediate cell adhesion and migration (Kireeva et al., 1998) and CTGF may elicit its biological effects in a similar manner. Alternatively, it has been proposed that the CCN family may not signal exclusively via cell surface receptors but rather are a component of the ECM, bridging the functional gap between structural and active molecules (Lau and Lam, 1999).



Other components of the ECM are known to have a fundamental role in the repair process and have a similar endometrial pattern of expression to that of CTGF. Fibronectin (FN) is a large glycoprotein that interacts with specific integrins to enhance cell adhesion and migration during wound repair (Kim *et al.*, 1992). Utilizing the ovariectomized rhesus macaque model, Cao *et al.* (2007) demonstrated a 50-fold increase in FN expression from the secretory to the menstrual phase alongside a 17-fold increase in its receptor, integrin- $\beta 1$ . Real-time

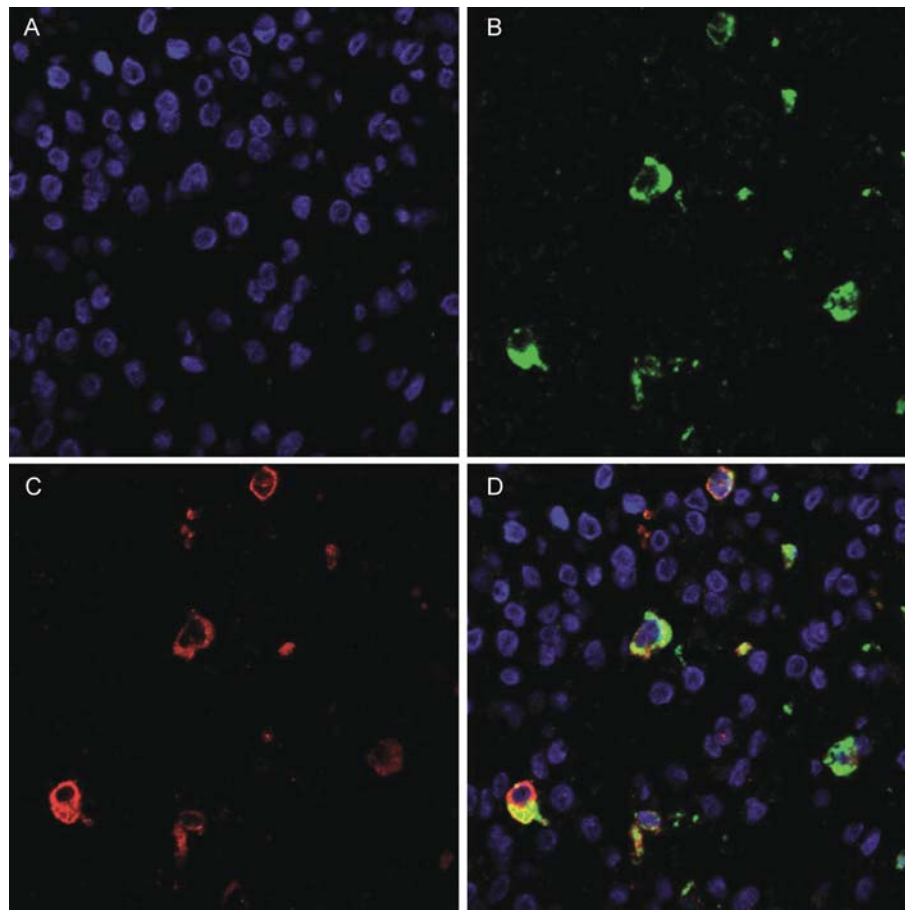
PCR, *in situ* hybridization and immunohistochemistry confirmed these findings and localized the increase in FN expression to the uppermost endometrial glands and luminal epithelium. Significant increases in adhesive molecules, such as CTGF and FN, in the functional layer of the endometrium at this time implicate involvement in surface healing post-menstruation.

Interestingly, we observed intense CTGF immunostaining of occasional stromal cells during the proliferative phase. Dual staining immunohistochemistry identified these cells as macrophages. Macrophages have a fundamental role in the inflammatory response and are often found at sites of intense tissue remodelling. They have been detected in the endometrium throughout the menstrual cycle (Bonatz *et al.*, 1992) with a significant influx during the late secretory phase (Kamat and Isaacson, 1987). The importance of endometrial leukocytes in post-menstrual repair has been demonstrated in the mouse model of menstruation. Neutrophil depletion using the antibody RB6-8C5 markedly delayed endometrial repair when examined 48 h after progesterone withdrawal versus control animals (Kaitu'u-Lino *et al.*, 2007). The role of macrophages during endometrial repair is still to be fully defined but macrophage depletion in the mouse model of endometriosis suggests a crucial role in growth and vascularization (Bacci *et al.*, 2009). Detection of CTGF within endometrial macrophages is thought to be of an endocytotic nature from the surrounding environment where it potentially acts as a chemoattractant to peripheral mononuclear cells (Cicha *et al.*, 2005). CTGF may be involved in the influx of macrophages to the endometrium during the latter stages of the menstrual cycle. There is recent evidence suggesting communication between macrophages and stromal cells in the human endometrium (Eyster *et al.*, 2010). Endometrial stromal cells co-cultured with macrophage cell supernatant demonstrated significantly increased expression of CTGF over those cultured with vehicle. Moreover, this response was found to be abrogated in the presence of estradiol and progesterone. Hence, endometrial macrophages may contribute to the significant increase in stromal cell expression of CTGF at the time of menstruation, when ovarian hormone levels are low.

### Hypoxia and the induction of repair

Herein we have demonstrated a significant increase in CTGF mRNA after exposure of endometrial epithelial cells and endometrial tissue explants to hypoxic conditions. The timing of increased CTGF in response to hypoxia was different in endometrial cells and tissue explants, with cells demonstrating a rapid response and tissue maintaining increased CTGF expression at 24 h. This may reflect the heterogeneous cell population that constitutes endometrial tissue. Tissue explants allow maintenance of cell–cell communication *in vitro*, mimicking the *in vivo* scenario more accurately than single cell culture.

It is postulated that a period of transient hypoxia occurs *in vivo* in the uppermost endometrial zones as spiral arterioles constrict following progesterone withdrawal. An early study in the rhesus monkey (Markee, 1940) revealed intense endometrial vasoconstriction, tissue necrosis and menstruation following progesterone withdrawal. More recently, the use of pimonidazole (hydroxyprobe®), a marker of oxygen partial pressures  $< 10$  mmHg, in the mouse model identified the presence of hypoxia during simulated menstruation (Fan *et al.*,



**Figure 4** Dual staining immunolocalization of CTGF and CD68 in endometrium from the proliferative phase: (A) nuclei staining in blue, (B) CD68 staining in green, (C) CTGF staining in red and (D) dual staining for CD68 (green) and CTGF (red) showing co-localization of CTGF in macrophage cells.

2008). In contrast, negligible levels of pimonidazole were observed by Day 5 after progesterone withdrawal. Furthermore, markers of tissue hypoxia (CAIX and hypoxia inducible factor-1 $\alpha$ ) have been detected immunohistochemically in the human endometrium during menstruation, with a distinct reduction in staining of both markers after cycle Day 5 (Critchley et al., 2006; Punyadeera et al., 2006).

### Prostaglandins and the induction of repair

We also demonstrate significant increases in CTGF mRNA and protein expression in endometrial cells after incubation with PGE<sub>2</sub> and PGF<sub>2 $\alpha$</sub> . These results contrast with findings in rat fibroblast cells and human airway smooth muscle cells, where PGE<sub>2</sub> treatment decreased CTGF mRNA expression (Yu et al., 2002; Burgess et al., 2006); highlighting the cell and tissue-specific nature of CTGF induction. We have demonstrated a synergistic increase in CTGF mRNA expression in endometrial cells treated with PGE<sub>2</sub> and hypoxia simultaneously. Both PGE<sub>2</sub> and PGF<sub>2 $\alpha$</sub>  have previously been shown to increase endometrial epithelial cell CYR61 mRNA expression (Gashaw et al., 2008). Furthermore, a synergistic increase with both hypoxia and PGE<sub>2</sub> was also demonstrated for this other member of the CCN family. Of note, CTGF mRNA was not increased in response

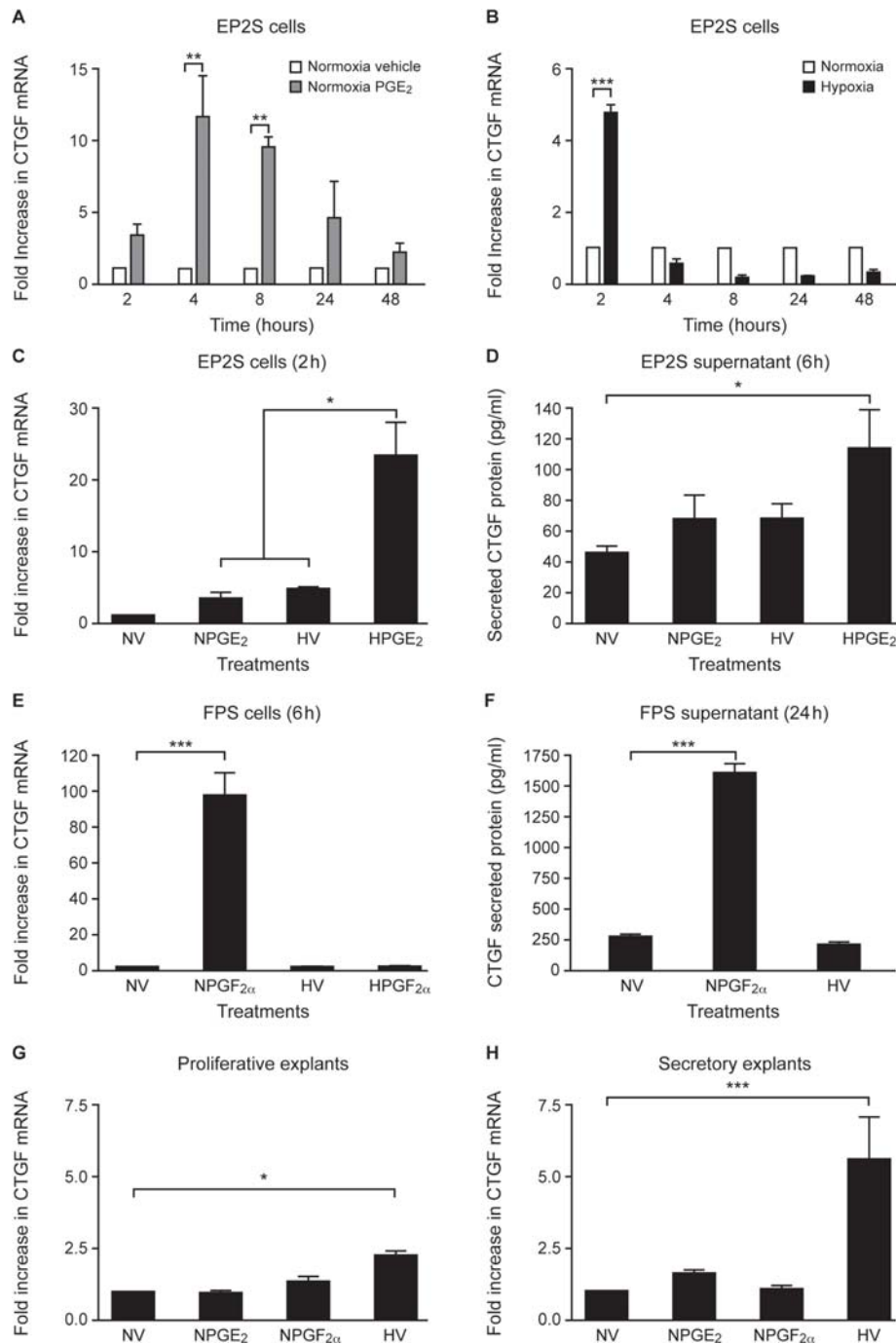
to PGE<sub>2</sub>/F<sub>2 $\alpha$</sub>  in endometrial tissue explants examined herein. This may be explained by a lack of FP receptors (the PGF<sub>2 $\alpha$</sub>  receptor) in human endometrial stromal cells (Milne and Jabbour, 2003), which may mask any epithelial increase in CTGF mRNA in whole tissue explants. Alternatively, the response of endometrial tissue to PG exposure *in vitro* may occur at a different time point. Owing to the limitations of human tissue availability, time-course experiments could not be performed.

As hypoxic conditions and increased PG synthesis have been demonstrated in the premenstrual endometrium following progesterone withdrawal, these factors may have an important role in the induction of CTGF. Their independent and synergistic actions may provide a robust mechanism for the stimulation of endometrial repair. Transforming growth factor (TGF)- $\beta$  is well established as a transcriptional regulator of CTGF in other cell types (Harlow et al., 2002; Higgins et al., 2004). The role of TGF- $\beta$  and other inflammatory mediators in endometrial CTGF expression remains to be determined.

### Conclusions

This paper describes maximal CTGF levels in the menstrual and proliferative endometrium; a time consistent with endometrial repair. We





**Figure 5** The regulation of CTGF by hypoxia and prostaglandins. **(A)** CTGF mRNA expression in EP2S cells treated with vehicle or 100 nM PGE<sub>2</sub> for up to 48 h in normoxic conditions ( $n = 3$ ). **(B)** CTGF mRNA expression in EP2S cells cultured in normoxic and hypoxic conditions for up to 48h ( $n = 3$ ). **(C)** CTGF mRNA expression in EP2S cells treated with 100 nM PGE<sub>2</sub> and/or hypoxia for 2 h ( $n = 3$ ). **(D)** Secreted CTGF protein levels in EP2S cell culture supernatant at 6 h ( $n = 3$ ). **(E)** CTGF mRNA expression in FPS cells treated with 100 nM PGE<sub>2</sub> and/or hypoxia for 6 h ( $n = 3$ ). **(F)** Secreted CTGF protein levels in FPS cell culture supernatant at 24 h ( $n = 3$ ). **(G)** CTGF mRNA in endometrial tissue explants from the proliferative phase treated with vehicle, 100 nM PGE<sub>2</sub>, 100 nM PGF<sub>2α</sub> or hypoxia ( $n = 3$ ). **(H)** CTGF mRNA in endometrial tissue explants from the secretory phase treated with vehicle, PGF<sub>2α</sub>, PGE<sub>2</sub> or hypoxia ( $n = 3$ ). N, normoxia (21% O<sub>2</sub>), H, hypoxia (0.5% O<sub>2</sub>); V, ethanol vehicle; PG, prostaglandin (\* $P < 0.05$ , \*\* $P < 0.01$ , \*\*\* $P < 0.01$ ). Fold changes are relative to findings in vehicle-treated controls in normoxic conditions.



describe the induction of CTGF by PGE<sub>2</sub>, PGF<sub>2α</sub> and hypoxic conditions and suggest these factors have a role in the perimenstrual endometrium to up-regulate CTGF expression for endometrial repair. Further studies are required to determine if aberrations in perimenstrual PG production or vasoconstriction lead to decreased CTGF levels and delayed repair, resulting in the clinical complaint of heavy or prolonged menstrual bleeding.

## Acknowledgements

We would like to acknowledge Catherine Murray and Sharon McPherson for their help with patient recruitment. Thanks also to Ronnie Grant for his help with figure preparation, Sheila Milne for providing secretarial support and Sarah McDonald for her excellent technical support.

## Authors' roles

J.A.M. contributed to conception and design, acquired data, analysed and interpreted data and drafted the article. J.B. and U.T. acquired data, performed analysis and provided critical revisions of the manuscript. N.H., H.N.J. and H.O.D.C. contributed to conception and design and provided critical revision of the intellectual content of the manuscript. All authors provided final approval of the version to be published.

## Funding

This study was supported by the Medical Research Council grant G0600048 and Barbour Watson Grant.

## Conflict of interest

None declared.

## References

- Aasmundstad TA, Haugen OA, Johannesen E, Hoe AL, Kvinnsland S. Oestrogen receptor analysis: correlation between enzyme immunoassay and immunohistochemical methods. *J Clin Pathol* 1992; **45**:125–129.
- Bacci M, Capobianco A, Monno A, Cottone L, Di Puppo F, Camisa B, Mariani M, Brignole C, Ponzoni M, Ferrari S et al. Macrophages are alternatively activated in patients with endometriosis and required for growth and vascularization of lesions in a mouse model of disease. *Am J Pathol* 2009; **175**:547–556.
- Baird DT, Cameron ST, Critchley HO, Drudy TA, Howe A, Jones RL, Lea RG, Kelly RW. Prostaglandins and menstruation. *Eur J Obstet Gynecol Reprod Biol* 1996; **70**:15–17.
- Bonatz G, Hansmann ML, Buchholz F, Mettler L, Radzun HJ, Semm K. Macrophage- and lymphocyte-subtypes in the endometrium during different phases of the ovarian cycle. *Int J Gynaecol Obstet* 1992; **37**:29–36.
- Brigstock DR. Regulation of angiogenesis and endothelial cell function by connective tissue growth factor (CTGF) and cysteine-rich 61 (CYR61). *Angiogenesis* 2002; **5**:153–165.
- Burgess JK, Ge Q, Poniris MH, Boustany S, Twigg SM, Black JL, Johnson PR. Connective tissue growth factor and vascular endothelial growth factor from airway smooth muscle interact with the extracellular matrix. *Am J Physiol Lung Cell Mol Physiol* 2006; **290**:L153–L161.
- Cao W, Mah K, Carroll RS, Slayden OD, Brenner RM. Progesterone withdrawal up-regulates fibronectin and integrins during menstruation and repair in the rhesus macaque endometrium. *Hum Reprod* 2007; **22**:3223–3231.
- Cicha I, Yilmaz A, Klein M, Raithele D, Brigstock DR, Daniel WG, Goppelt-Struebe M, Garlich CD. Connective tissue growth factor is overexpressed in complicated atherosclerotic plaques and induces mononuclear cell chemotaxis *in vitro*. *Arterioscler Thromb Vasc Biol* 2005; **25**:1008–1013.
- Critchley HO, Kelly RW, Brenner RM, Baird DT. The endocrinology of menstruation—a role for the immune system. *Clin Endocrinol (Oxf)* 2001; **55**:701–710.
- Critchley HO, Jones RL, Lea RG, Drudy TA, Kelly RW, Williams AR, Baird DT. Role of inflammatory mediators in human endometrium during progesterone withdrawal and early pregnancy. *J Clin Endocrinol Metab* 1999; **84**:240–248.
- Critchley HO, Osei J, Henderson TA, Boswell L, Sales KJ, Jabbour HN, Hirani N. Hypoxia-inducible factor-1α expression in human endometrium and its regulation by prostaglandin E-series prostanoid receptor 2 (EP2). *Endocrinology* 2006; **147**:744–753.
- Eyster KM, Hansen KA, Winterton E, Klinkova O, Drappeau D, Mark-Kappeler CJ. Reciprocal communication between endometrial stromal cells and macrophages. *Reprod Sci* 2010; **17**:809–822.
- Fan X, Krieg S, Kuo CJ, Wiegand SJ, Rabinovitch M, Druzin ML, Brenner RM, Giudice LC, Nayak NR. VEGF blockade inhibits angiogenesis and reepithelialization of endometrium. *FASEB J* 2008; **22**:3571–3580.
- Frazier K, Williams S, Kothapalli D, Klapper H, Grotendorst GR. Stimulation of fibroblast cell growth, matrix production, and granulation tissue formation by connective tissue growth factor. *J Invest Dermatol* 1996; **107**:404–411.
- Gaide Chevronnay HP, Galant C, Lemoine P, Courtoy PJ, Marbaix E, Henriët P. Spatiotemporal coupling of focal extracellular matrix degradation and reconstruction in the menstrual human endometrium. *Endocrinology* 2009; **150**:5094–5105.
- Gaide Chevronnay HP, Lemoine P, Courtoy PJ, Marbaix E, Henriët P. Ovarian steroids, mitogen-activated protein kinases, and/or aspartic proteinases cooperate to control endometrial remodeling by regulating gene expression in the stroma and glands. *Endocrinology* 2010; **151**:4515–4526.
- Garry R, Hart R, Karthigasu KA, Burke C. A re-appraisal of the morphological changes within the endometrium during menstruation: a hysteroscopic, histological and scanning electron microscopic study. *Hum Reprod* 2009; **24**:1393–1401.
- Gashaw I, Stiller S, Boing C, Kimmig R, Winterhager E. Premenstrual regulation of the pro-angiogenic factor CYR61 in human endometrium. *Endocrinology* 2008; **149**:2261–2269.
- Harlow CR, Davidson L, Burns KH, Yan C, Matzuk MM, Hillier SG. FSH and TGF-β superfamily members regulate granulosa cell connective tissue growth factor gene expression *in vitro* and *in vivo*. *Endocrinology* 2002; **143**:3316–3325.
- Higgins DF, Biju MP, Akai Y, Wutz A, Johnson RS, Haase VH. Hypoxic induction of Ctgf is directly mediated by Hif-1. *Am J Physiol Renal Physiol* 2004; **287**:F1223–F1232.
- Hishikawa K, Nakaki T, Fujii T. Connective tissue growth factor induces apoptosis via caspase 3 in cultured human aortic smooth muscle cells. *Eur J Pharmacol* 2000; **392**:19–22.
- Igarashi A, Okochi H, Bradham DM, Grotendorst GR. Regulation of connective tissue growth factor gene expression in human skin fibroblasts and during wound repair. *Mol Biol Cell* 1993; **4**:637–645.

- Ivkovic S, Yoon BS, Popoff SN, Safadi FF, Libuda DE, Stephenson RC, Daluiski A, Lyons KM. Connective tissue growth factor coordinates chondrogenesis and angiogenesis during skeletal development. *Development* 2003;**130**:2779–2791.
- Kaitu'u-Lino TJ, Morison NB, Salamonsen LA. Neutrophil depletion retards endometrial repair in a mouse model. *Cell Tissue Res* 2007;**328**:197–206.
- Kamat BR, Isaacson PG. The immunocytochemical distribution of leukocytic subpopulations in human endometrium. *Am J Pathol* 1987;**127**:66–73.
- Keightley MC, Brown P, Jabbour HN, Sales KJ. F-prostaglandin receptor regulates endothelial cell function via fibroblast growth factor-2. *BMC Cell Biol* 2010;**11**:8.
- Kim JP, Zhang K, Kramer RH, Schall TJ, Woodley DT. Integrin receptors and RGD sequences in human keratinocyte migration: unique anti-migratory function of alpha 3 beta 1 epiligrin receptor. *J Invest Dermatol* 1992;**98**:764–770.
- King AE, Critchley HO. Oestrogen and progesterone regulation of inflammatory processes in the human endometrium. *J Steroid Biochem Mol Biol* 2010;**120**:116–126.
- Kireeva ML, Lam SC, Lau LF. Adhesion of human umbilical vein endothelial cells to the immediate-early gene product Cyr61 is mediated through integrin alphavbeta3. *J Biol Chem* 1998;**273**:3090–3096.
- Lau LF, Lam SC. The CCN family of angiogenic regulators: the integrin connection. *Exp Cell Res* 1999;**248**:44–57.
- Ludwig H, Spornitz UM. Microarchitecture of the human endometrium by scanning electron microscopy: menstrual desquamation and remodeling. *Ann N Y Acad Sci* 1991;**622**:28–46.
- Markee JE. Menstruation in intraocular transplants in the rhesus monkey. *Contrib Embryol* 1940;**28**:219–308.
- Maybin JA, Hirani N, Jabbour HN, Critchley HO. Novel roles for hypoxia and prostaglandin E2 in the regulation of IL-8 during endometrial repair. *Am J Pathol* 2011a;**178**:1245–1256.
- Maybin JA, Hirani N, Brown P, Jabbour HN, Critchley HO. The regulation of vascular endothelial growth factor by hypoxia and prostaglandin F2{alpha} during human endometrial repair. *J Clin Endocrinol Metab* 2011b [Epub ahead of print].
- Maybin JA, Battersby S, Hirani N, Nikitenko LL, Critchley HO, Jabbour HN. The expression and regulation of adrenomedullin in the human endometrium: a candidate for endometrial repair. *Endocrinology* 2011c;**152**:2845–2856.
- Milne SA, Jabbour HN. Prostaglandin (PG) F(2alpha) receptor expression and signaling in human endometrium: role of PGF(2alpha) in epithelial cell proliferation. *J Clin Endocrinol Metab* 2003;**88**:1825–1832.
- Noyes RW, Hertig AT, Rock J. Dating the endometrial biopsy. *Fertil Steril* 1950;**1**:3–25.
- Oemar BS, Werner A, Garnier JM, Do DD, Godoy N, Nauck M, Marz W, Rupp J, Pech M, Luscher TF. Human connective tissue growth factor is expressed in advanced atherosclerotic lesions. *Circulation* 1997;**95**:831–839.
- Punyadeera C, Thijssen VL, Tchaikovski S, Kamps R, Delvoux B, Dunselman GA, de Goeij AF, Griffioen AW, Groothuis PG. Expression and regulation of vascular endothelial growth factor ligands and receptors during menstruation and post-menstrual repair of human endometrium. *Mol Hum Reprod* 2006;**12**:367–375.
- Sales KJ, Maudsley S, Jabbour HN. Elevated prostaglandin EP2 receptor in endometrial adenocarcinoma cells promotes vascular endothelial growth factor expression via cyclic 3',5'-adenosine monophosphate-mediated transactivation of the epidermal growth factor receptor and extracellular signal-regulated kinase 1/2 signaling pathways. *Mol Endocrinol* 2004;**18**:1533–1545.
- Shimo T, Kubota S, Kondo S, Nakanishi T, Sasaki A, Mese H, Matsumura T, Takigawa M. Connective tissue growth factor as a major angiogenic agent that is induced by hypoxia in a human breast cancer cell line. *Cancer Lett* 2001;**174**:57–64.
- Uzumcu M, Homsí MF, Ball DK, Coskun S, Jaroudi K, Hollanders JM, Brigstock DR. Localization of connective tissue growth factor in human uterine tissues. *Mol Hum Reprod* 2000;**6**:1093–1098.
- Yu J, Prado GN, Schreiber B, Polgar P, Taylor L. Role of prostaglandin E(2) EP receptors and cAMP in the expression of connective tissue growth factor. *Arch Biochem Biophys* 2002;**404**:302–308.