


RESEARCH

Open Access



# Lung tissue shows divergent gene expression between chronic obstructive pulmonary disease and idiopathic pulmonary fibrosis

Auyon J. Ghosh<sup>1,2</sup>, Brian D. Hobbs<sup>1,2,3</sup>, Jeong H. Yun<sup>1,2,3</sup>, Aabida Saferali<sup>1</sup>, Matthew Moll<sup>1,2</sup>, Zhonghui Xu<sup>1</sup>, Robert P. Chase<sup>1</sup>, Jarrett Morrow<sup>1,3</sup>, John Ziniti<sup>1</sup>, Frank Sciruba<sup>4</sup>, Lucas Barwick<sup>5</sup>, Andrew H. Limper<sup>6</sup>, Kevin Flaherty<sup>7</sup>, Gerard Criner<sup>8</sup>, Kevin K. Brown<sup>9</sup>, Robert Wise<sup>10</sup>, Fernando J. Martinez<sup>11</sup>, Daniel McGoldrick<sup>12</sup>, Michael H. Cho<sup>1,2,3</sup>, Dawn L. DeMeo<sup>1,2,3</sup>, Edwin K. Silverman<sup>1,2,3</sup>, Peter J. Castaldi<sup>1,3</sup>, NHLBI Trans-Omics for Precision Medicine (TOPMed) Consortium and Craig P. Hersh<sup>1,2,3\*</sup> 

## Abstract

**Background:** Chronic obstructive pulmonary disease (COPD) and idiopathic pulmonary fibrosis (IPF) are characterized by shared exposures and clinical features, but distinct genetic and pathologic features exist. These features have not been well-studied using large-scale gene expression datasets. We hypothesized that there are divergent gene, pathway, and cellular signatures between COPD and IPF.

**Methods:** We performed RNA-sequencing on lung tissues from individuals with IPF (n = 231) and COPD (n = 377) compared to control (n = 267), defined as individuals with normal spirometry. We grouped the overlapping differential expression gene sets based on direction of expression and examined the resultant sets for genes of interest, pathway enrichment, and cell composition. Using gene set variation analysis, we validated the overlap group gene sets in independent COPD and IPF data sets.

**Results:** We found 5010 genes differentially expressed between COPD and control, and 11,454 genes differentially expressed between IPF and control (1% false discovery rate). 3846 genes overlapped between IPF and COPD. Several pathways were enriched for genes upregulated in COPD and downregulated in IPF; however, no pathways were enriched for genes downregulated in COPD and upregulated in IPF. There were many myeloid cell genes with increased expression in COPD but decreased in IPF. We found that the genes upregulated in COPD but downregulated in IPF were associated with lower lung function in the independent validation cohorts.

**Conclusions:** We identified a divergent gene expression signature between COPD and IPF, with increased expression in COPD and decreased in IPF. This signature is associated with worse lung function in both COPD and IPF.

**Keywords:** COPD, IPF, RNA sequencing

## Background

Chronic obstructive pulmonary disease (COPD) is a chronic lung disease characterized by airflow limitation, airway inflammation, and lung parenchymal destruction. In addition to well-known COPD risk factors including

\*Correspondence: craig.hersh@channing.harvard.edu

<sup>1</sup> Channing Division of Network Medicine, Department of Medicine, Brigham and Women's Hospital, 181 Longwood Avenue, Boston, MA 02115, USA

Full list of author information is available at the end of the article



© The Author(s) 2022. **Open Access** This article is licensed under a Creative Commons Attribution 4.0 International License, which permits use, sharing, adaptation, distribution and reproduction in any medium or format, as long as you give appropriate credit to the original author(s) and the source, provide a link to the Creative Commons licence, and indicate if changes were made. The images or other third party material in this article are included in the article's Creative Commons licence, unless indicated otherwise in a credit line to the material. If material is not included in the article's Creative Commons licence and your intended use is not permitted by statutory regulation or exceeds the permitted use, you will need to obtain permission directly from the copyright holder. To view a copy of this licence, visit <http://creativecommons.org/licenses/by/4.0/>. The Creative Commons Public Domain Dedication waiver (<http://creativecommons.org/publicdomain/zero/1.0/>) applies to the data made available in this article, unless otherwise stated in a credit line to the data.

age and cigarette smoking, more than 80 genetic loci have been associated with COPD susceptibility [1, 2]. Idiopathic pulmonary fibrosis (IPF) is another chronic lung disease with age and smoking as risk factors but is characterized by lung parenchymal scarring on pathology and imaging and restriction on lung function testing. While fewer genetic loci have been associated with IPF, the estimated heritability is greater for IPF compared to COPD, largely due to variants in the *MUC5B* gene.

Given the shared non-genetic risk factors, there has been significant recent interest in identifying shared genetic factors and biological mechanisms that underlie the development and progression of both diseases. Genome-wide association studies (GWAS) have identified five genetic loci that overlap between IPF and COPD [3, 4], albeit in opposite direction of association. Previous studies using gene expression from lung tissue have demonstrated enrichment of the p53/hypoxia pathway among the overlapped differentially expressed genes and alternative splice variants in COPD and IPF [5]. In addition, several studies have implicated accelerated cellular senescence in the development of both diseases [6, 7].

While convergent genes and pathways have been demonstrated, fewer studies have investigated the divergent genes, pathways, and cell populations represented in the contrast of the disease states. Epithelial [8] vs. mesenchymal [9] precursor cell dysfunction has been linked to the divergence of COPD and IPF [10]. In addition, the Wnt and Notch signaling pathways appear to be overactivated in IPF but aberrantly inhibited in COPD [11, 12]. However, the larger context of the genes and pathways involved and their relative effects in each disease is less clear. We therefore sought to identify genes and pathways involved in the divergence of IPF and COPD using gene expression in resected human lung tissue from well-characterized subjects. We additionally hypothesized that these divergent gene sets are associated with worse clinical outcomes in both COPD and IPF.

## Methods

### Study participants

Lung tissue samples were obtained through the Lung Tissue Research Consortium (LTRC). Further details regarding subject recruitment have been previously published [13]. Institutional review boards approved the study at all participating institutions and all patients provided written informed consent per LTRC protocol. We made the diagnosis of IPF based on a consensus clinical diagnosis of IPF according to American Thoracic Society/European Respiratory Society guidelines for diagnosis of IPF or a pathologic diagnosis of UIP or honeycomb lung [14]. We defined COPD as forced expiratory volume in one second (FEV<sub>1</sub>) to forced vital capacity (FVC) ratio

< 0.70 and FEV<sub>1</sub>% predicted < 80% (Global Initiative for Chronic Obstructive Lung Disease [GOLD] stage 2–4) [15] and either pathologic emphysema or no alternative pathologic diagnosis. We defined control subjects as FEV<sub>1</sub>/FVC ratio  $\geq$  0.70 and either no alternative pathologic diagnosis or pathologic emphysema. We excluded subjects missing demographic information, including current smoking status, and subjects whose corresponding tissue did not have pathology information for the lobe of origin.

Validation of findings from LTRC was performed using blood RNA-seq data from the COPDGene study [16] and blood gene expression microarrays from a study of IPF subjects initially recruited to investigate host-microbial interactions in IPF [17].

### Differential expression

The methods of RNA data processing are available in Additional file 1. We performed differential expression using the limma and voom packages. Models were adjusted for age, race, sex, current smoking status, smoking pack-years, and library preparation batch. Surrogate variables were used to estimate other latent effects and included in the models as covariates. Multiple testing was controlled with a false discovery rate (FDR) < 1%.

Genes that were differentially expressed in both COPD and IPF were grouped into four groups based on direction of log<sub>2</sub> fold change, where Group 1 was defined by genes with increased expression in IPF and COPD and Group 4 was defined by genes with decreased expression in IPF and COPD (convergent gene sets), and Group 2 was defined by genes with increased expression in IPF but decreased expression in COPD and Group 3 was defined by genes with decreased expression in IPF but increased expression in COPD (divergent gene sets). The methods for gene set enrichment, pathway analysis, cell category composition, and cell deconvolution are available in Additional file 1.

### Gene set variation analysis

To investigate the association of our overlap expression gene sets with outcomes in LTRC including FEV<sub>1</sub> and DLCO, we employed gene set variation analysis (GSVA) [18].

GSVA can be used to reduce noise and improve interpretability via dimension reduction of the overlap gene expression sets [19]. GSVA produces an enrichment score, similar to those in other gene set enrichment techniques, but allows for analysis of novel gene sets not necessarily defined by pathways or other externally pre-determined gene sets. The scores can then be tested for association with various phenotypic data using traditional statistical methods. We tested the association

of overlap gene expression set GSVA score with clinical outcomes in all subjects from LTRC. We validated these findings using blood RNA sequencing data and clinical and chest CT imaging outcomes from an independent COPD case–control study [20] and blood RNA sequencing data and clinical outcomes from a publicly available IPF case–control study [17] (GEO accession GSE93606) and validated the association of the overlap gene sets with disease status in each replication cohort.

## Results

### Subject characteristics

We obtained lung samples from 1503 subjects from the LTRC. 1399 subjects had complete demographic and pathology information. Of these, 231 subjects met case criteria for IPF, 377 subjects met case criteria for COPD, and 267 subjects met control criteria. Demographic and clinical characteristics for the subjects included in the present study are shown in Table 1.

Compared to controls, IPF subjects were more likely to be male but otherwise similar demographically. Compared to controls, COPD subjects were older, more likely to be male, had lower BMI, and significantly higher lifetime smoking intensity in pack-years.

### Differential gene expression

There were 58,870 RNAs identified among all subjects. After filtering for low expressed genes, we assessed

15,893 genes for differential expression between IPF and controls and 15,578 genes for differential expression between COPD and controls (Fig. 1). We found 11,454 and 5010 genes differentially expressed for IPF and COPD, respectively, after accounting for multiple testing using 1% FDR (Additional file 2: Tables S1 and S2). There were 3853 genes that overlapped between IPF and COPD (Fig. 2A, Additional file 2: Table S3). Of these, 3846 genes had corresponding HGNC symbols and were used in downstream analyses. There were 1507 genes in Group 1 (upregulated in both COPD and IPF), 397 genes in Group 2 (downregulated in COPD, upregulated in IPF), 530 genes in Group 3 (upregulated in COPD, downregulated in IPF), and 1412 genes in Group 4 (downregulated in in both) (Fig. 2B).

### Gene set enrichment and pathway analysis

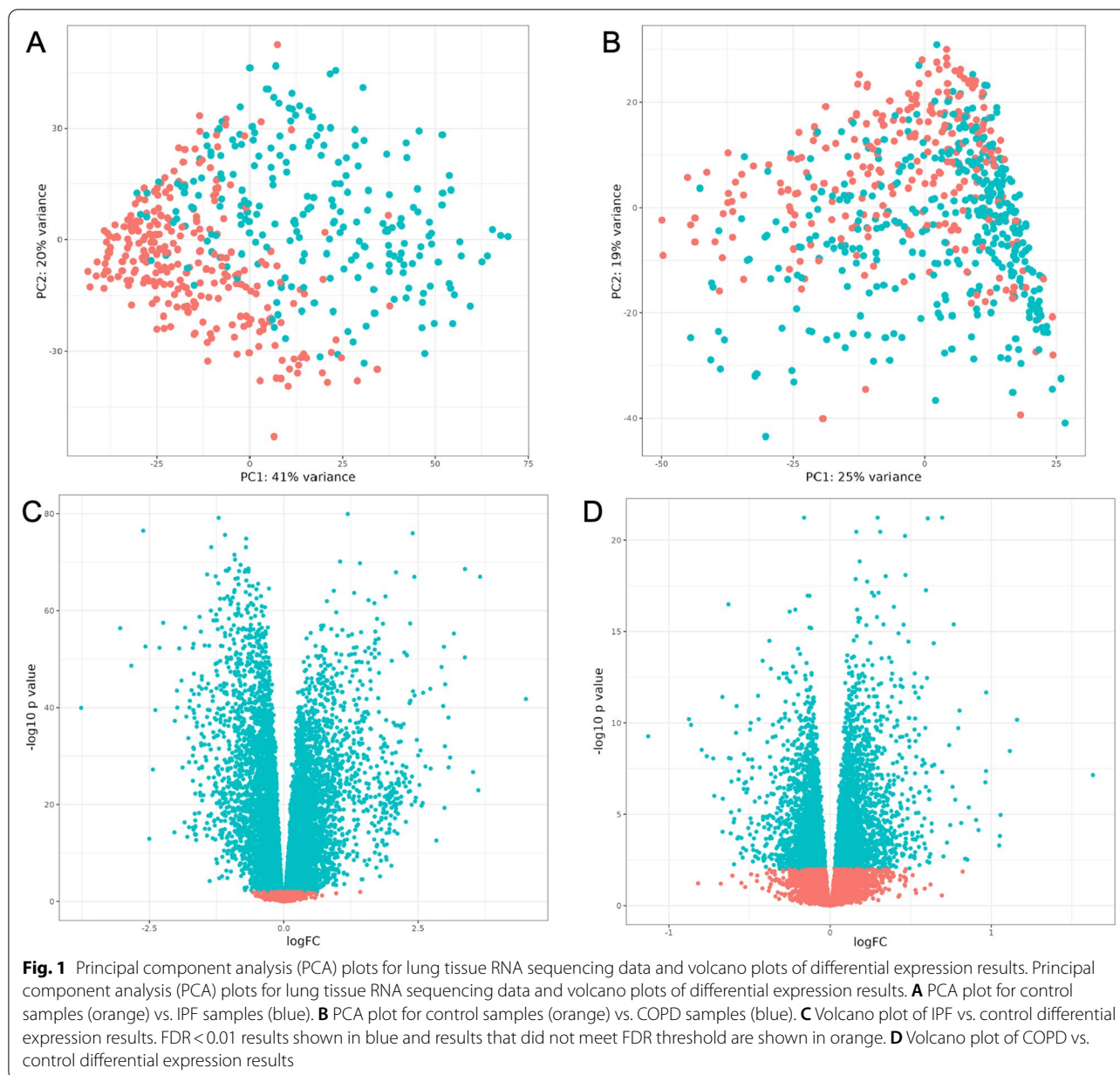
We examined the differential expression of the nearest genes and all genes within 200 kb of the 82 top single nucleotide polymorphisms identified in a large, collaborative GWAS of COPD [1]. 18 of the nearest genes were differentially expressed (1% FDR) (Table 2), while 64 out of 490 genes within 400 kb ( $\pm 200$  kb) were differentially expressed (Additional file 2: Table S4). We also examined the 4 genes, which were identified through chromatin interaction, methylation, open chromatin regions, and deleterious coding variants, affected by COPD expression quantitative trait loci (eQTLs). Of

**Table 1** LTRC subject characteristics

Characteristic	IPF	COPD	Control	p value IPF vs. control	p value COPD vs. control
n	231	377	267		
Age, years	63.39 (7.90)	63.78 (9.05)	61.90 (12.65)	0.123	0.029
Male sex	157 (68.0)	201 (53.3)	105 (39.3)	<0.001	0.001
Race				0.180	0.222
White	205 (88.7)	344 (91.2)	246 (92.1)		
Asian	3 (1.3)	0 (0)	0 (0)		
Black	10 (4.3)	26 (6.9)	11 (4.1)		
Hispanic	7 (3.0)	5 (1.3)	8 (3.0)		
Other race	6 (2.6)	2 (0.5)	2 (0.7)		
BMI, kg/m <sup>2</sup>	29.72 (5.44)	26.03 (5.11)	28.75 (5.88)	0.060	<0.001
Current smoking	3 (1.3)	25 (6.6)	10 (3.7)	0.154	0.157
Ever smoking	152 (65.8)	365 (96.8)	173 (64.8)	0.888	<0.001
Smoking pack-years	18.06 (23.33)	47.76 (30.48)	19.11 (26.75)	0.642	<0.001
Pre-bronchodilator FEV <sub>1</sub> , % predicted	66.17 (19.28)	40.18 (19.74)	96.62 (12.83)	<0.001	<0.001
Pre-bronchodilator FVC, % predicted	61.11 (18.06)	67.94 (18.11)	96.67 (13.10)	<0.001	<0.001
Pre-bronchodilator FEV <sub>1</sub> /FVC	0.83 (0.08)	0.43 (0.15)	0.77 (0.06)	<0.001	<0.001
DLCO, % predicted	38.95 (19.80)	40.98 (18.22)	73.78 (15.52)	<0.001	<0.001

Data presented as mean (SD) or no. (%)

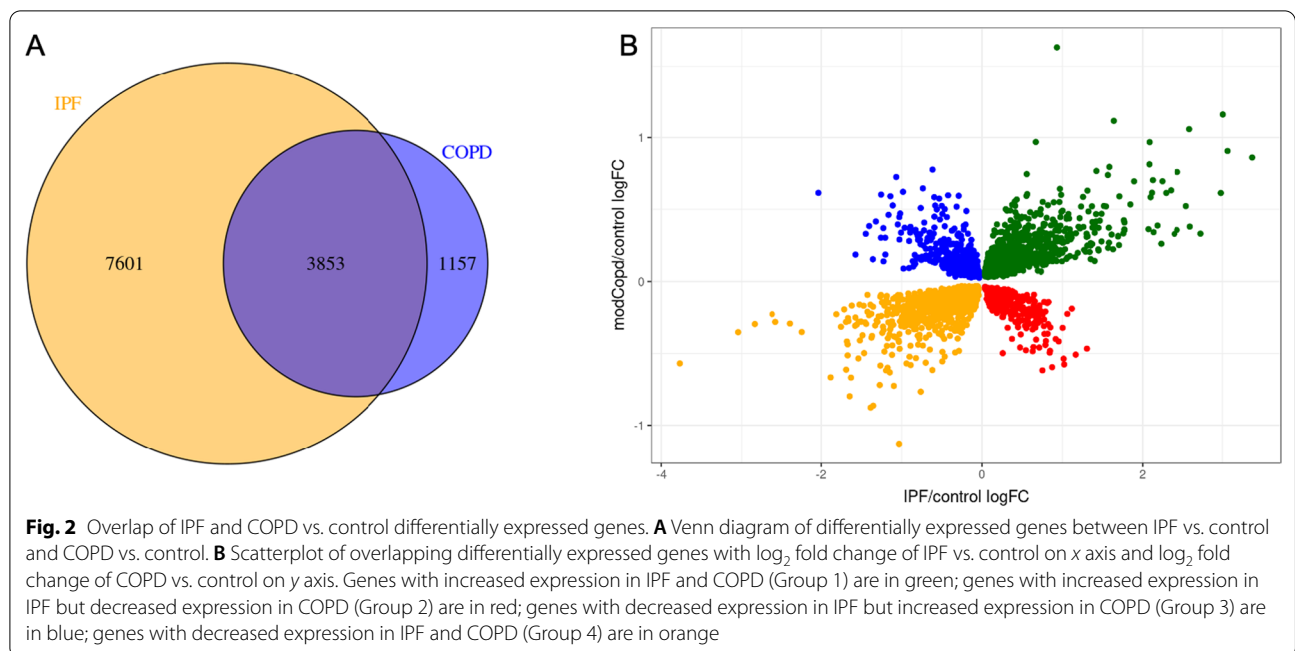
LTRC Lung Tissue Research Consortium, IPF idiopathic pulmonary fibrosis, COPD chronic obstructive pulmonary disease, BMI body mass index, FEV<sub>1</sub> forced expiratory volume in 1 s, FVC forced vital capacity, DLCO diffusion capacity for carbon monoxide



these 4 genes, 2 genes (*ADAMTSL3* and *RIN3*) were present in the overlapping differentially expressed genes between IPF and COPD.

Several genes had decreased expression in COPD compared to control, including *TGFB2*, *ADAMTSL3*, and *AGER*. We examined the differential expression of the nearest genes and genes within 200 kb of the 13 genetic loci identified in a GWAS of IPF. Three of the nearest genes were differentially expressed in IPF vs. controls (1% FDR), including *AKAP13*, *DEPTOR*, and *DPP9* (Table 3), while 19 of the 125 genes within 200 kb were differentially expressed (Additional file 2: Table S5).

Of the 50 MSigDB Hallmark pathways, 31 pathways demonstrated significant enrichment in the four COPD and IPF overlap gene groups (Additional file 2: Table S6). In the convergent gene sets, there were 16 pathways significantly enriched in Group 1 (upregulated in both COPD and IPF) and 5 pathways enriched in Group 4 (downregulated in both COPD and IPF). In the divergent gene sets, there were 0 pathways enriched in Group 2 (downregulated in COPD, upregulated in IPF) but there were 10 pathways significantly enriched in Group 3 (upregulated in COPD, downregulated in IPF). A heatmap of the enrichment scores and hierarchical clustering



**Table 2** COPD GWAS [1] genes in the overlapping differentially expressed gene groups

Gene	COPD vs. control $\log_2FC$	Unadjusted p value	Adjusted p value	Overlap group
TGFB2	-0.32	1.72E-15	3.51E-13	4
ZKSCAN1	-0.14	8.44E-12	4.59E-10	2
PABPC4	0.14	1.99E-10	6.96E-09	1
MFAP2	0.27	1.87E-07	2.44E-06	1
ADAMTSL3*	-0.18	4.48E-07	5.21E-06	4
AGER	-0.23	5.32E-07	6.03E-06	4
PID1	0.16	5.00E-07	5.72E-06	3
RPL23	0.11	9.15E-07	9.56E-06	1
MFHAS1	0.11	1.22E-06	1.22E-05	3
BTC	-0.17	2.27E-05	1.47E-04	2
CHRM3	-0.28	4.39E-05	2.60E-04	4
SFTPD	0.17	1.10E-04	5.80E-04	3
MED13L	-0.06	1.04E-04	5.47E-04	4
NR4A2	0.45	3.20E-04	1.42E-03	3
ZBTB38	-0.06	3.40E-04	1.48E-03	4
HHIP	0.19	1.73E-03	5.92E-03	3
RIN3*	0.07	2.09E-03	6.93E-03	3
CITED2	0.16	2.21E-03	7.28E-03	3

The gene nearest to each lead GWAS single nucleotide polymorphism is included

COPD vs. control  $\log_2FC$ , unadjusted p values, and Benjamini-Hochberg adjusted p value shown. Genes identified as eQTLs denoted with \*. Group 1: genes with increased expression in IPF and COPD; Group 2: genes with increased expression in IPF but decreased expression in COPD; Group 3: genes with decreased expression in IPF but increased expression in COPD; Group 4: genes with decreased expression in IPF and COPD

COPD chronic obstructive pulmonary disease, GWAS genome-wide association study,  $\log_2FC$   $\log_2$  fold change, eQTL expression quantitative trait locus

**Table 3** IPF GWAS [4] genes in the overlapping differentially expressed gene groups

Gene	IPF vs. control log <sub>2</sub> FC	Unadjusted p value	Adjusted p value	Overlap group
AKAP13	-0.25	3.48E-21	1.88E-20	3
DEPTOR	0.33	2.13E-06	4.07E-06	1
DPP9	0.08	1.43E-05	2.56E-05	1

The gene nearest to each lead GWAS single nucleotide polymorphism is included

IPF vs. control log<sub>2</sub>FC and Benjamini-Hochberg adjusted p value shown. Group 1: genes with increased expression in IPF and COPD; Group 2: genes with increased expression in IPF but decreased expression in COPD; Group 3: genes with decreased expression in IPF but increased expression in COPD; Group 4: genes with decreased expression in IPF and COPD

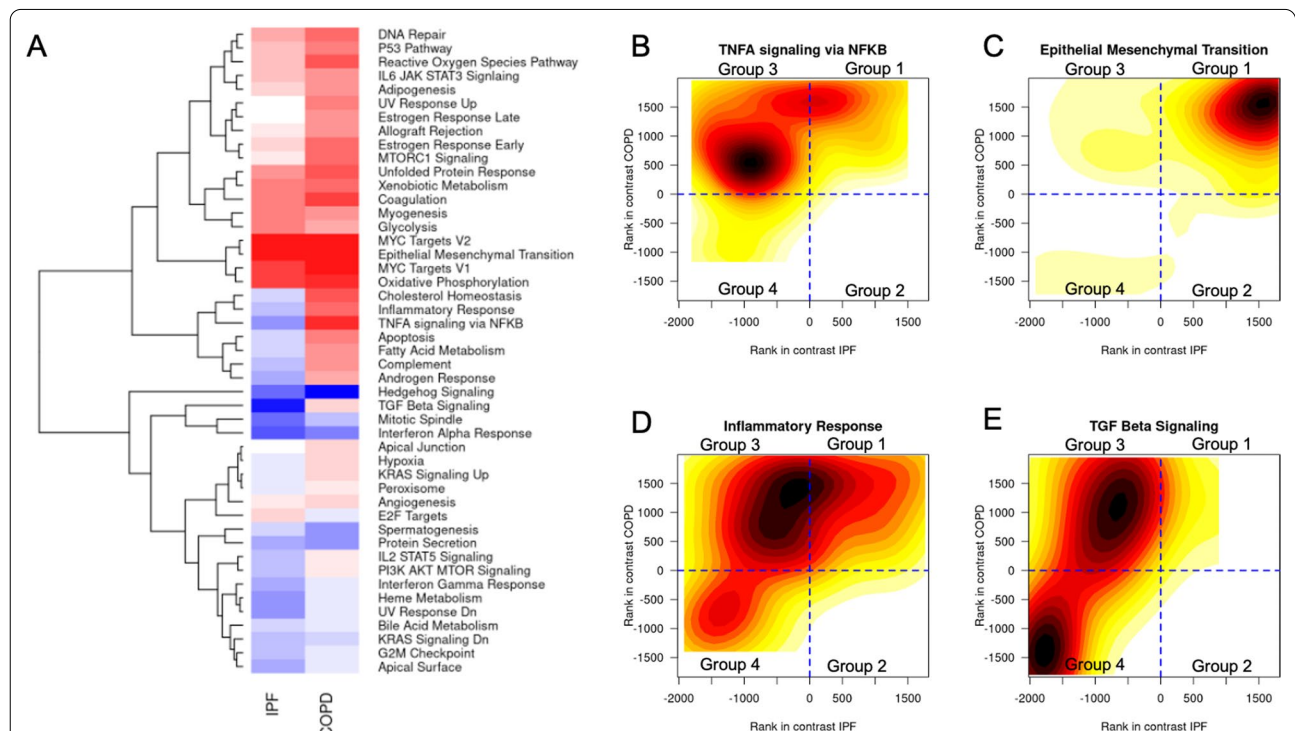
IPF idiopathic pulmonary fibrosis, GWAS genome-wide association study, log<sub>2</sub>FC log<sub>2</sub> fold change

of the pathways is shown in Fig. 3A. The top enriched pathways, ranked by joint enrichment MANOVA p value, include tumor necrosis factor alpha (TNFA) signaling, epithelial-mesenchymal transition, inflammatory

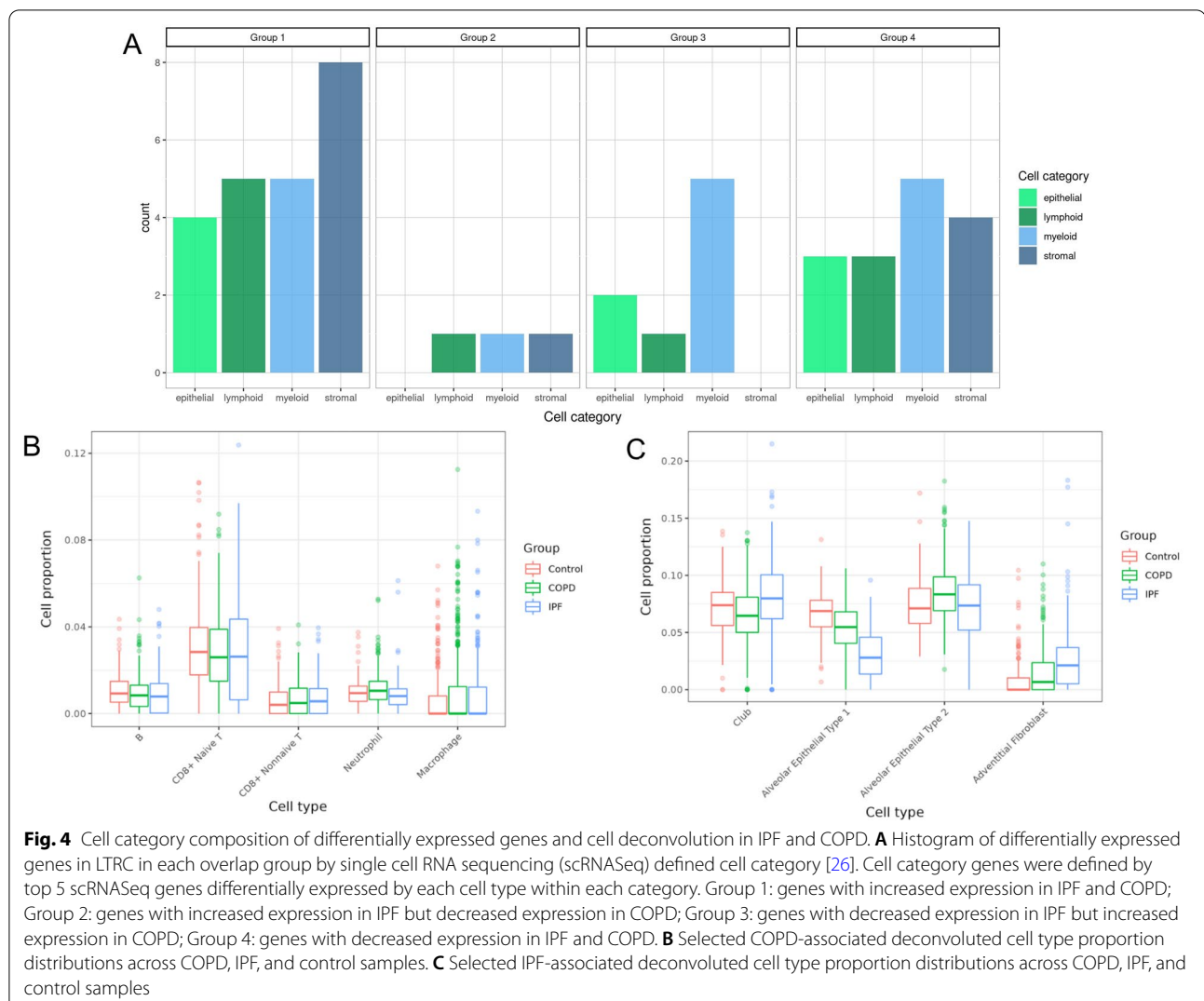
response, and transforming growth factor beta (TGFB) signaling. While the majority of pathways showed single visual clusters of genes, TGFB signaling and TNFA signaling appeared to have two separate clusters (Fig. 3B-E). TGFB signaling, TNFA signaling, and inflammatory response were in Group 3, while epithelial-mesenchymal transition was in Group 1.

**Cell category composition of overlap groups and cell type deconvolution**

Using the top five genes ranked by FDR adjusted p-value from a previously reported single cell RNA-Seq study in IPF and COPD [21] for each of the 38 cell types in four cell categories, we examined the distribution of the 190 genes in the four overlap groups. There was an overrepresentation of stromal cell genes in Group 1 and a relatively uniform distribution of cell categories in Group 4. In the divergent gene sets, there was minimal representation of lymphoid, myeloid, and stromal cell genes in Group 2 and an overrepresentation of myeloid genes in Group 3 (Fig. 4A).



**Fig. 3** Hallmark pathway enrichment. **A** Heatmap of enrichment scores for differentially expressed genes in IPF and COPD vs. control with hierarchical clustering. Cells in red denote positive enrichment score whereas cells in blue denote negative enrichment score. **B** Density plot of genes ranks in IPF on x axis and gene ranks in COPD on y axis in TNF-alpha signaling via NFKB pathway. Color gradient represents the number of genes at the given rank coordinates, where darker shades of red denote the location with the highest number of genes and lighter shades of yellow denote the location with the lowest number genes. **C** Density plot of genes ranks in IPF on x axis and gene ranks in COPD on y axis in epithelial mesenchymal transition pathway. **D** Density plot of gene ranks in IPF on x axis and gene ranks in COPD on y axis in inflammatory response pathway. **E** Density plot of gene ranks in IPF on x axis and gene ranks in COPD on y axis in TGF Beta signaling pathway



We performed cell type deconvolution using Bisque, a robust and efficient method that employs non-negative least-squares regression, and a publicly available lung single-cell RNA sequencing data [19, 22]. We focused on cell types previously associated with COPD and IPF [23, 24]. We found that there was a higher proportion of adventitial fibroblasts ( $p=0.035$ ) in IPF samples compared to COPD and control samples, but there was no difference between the other selected cell types (Fig. 4B, C).

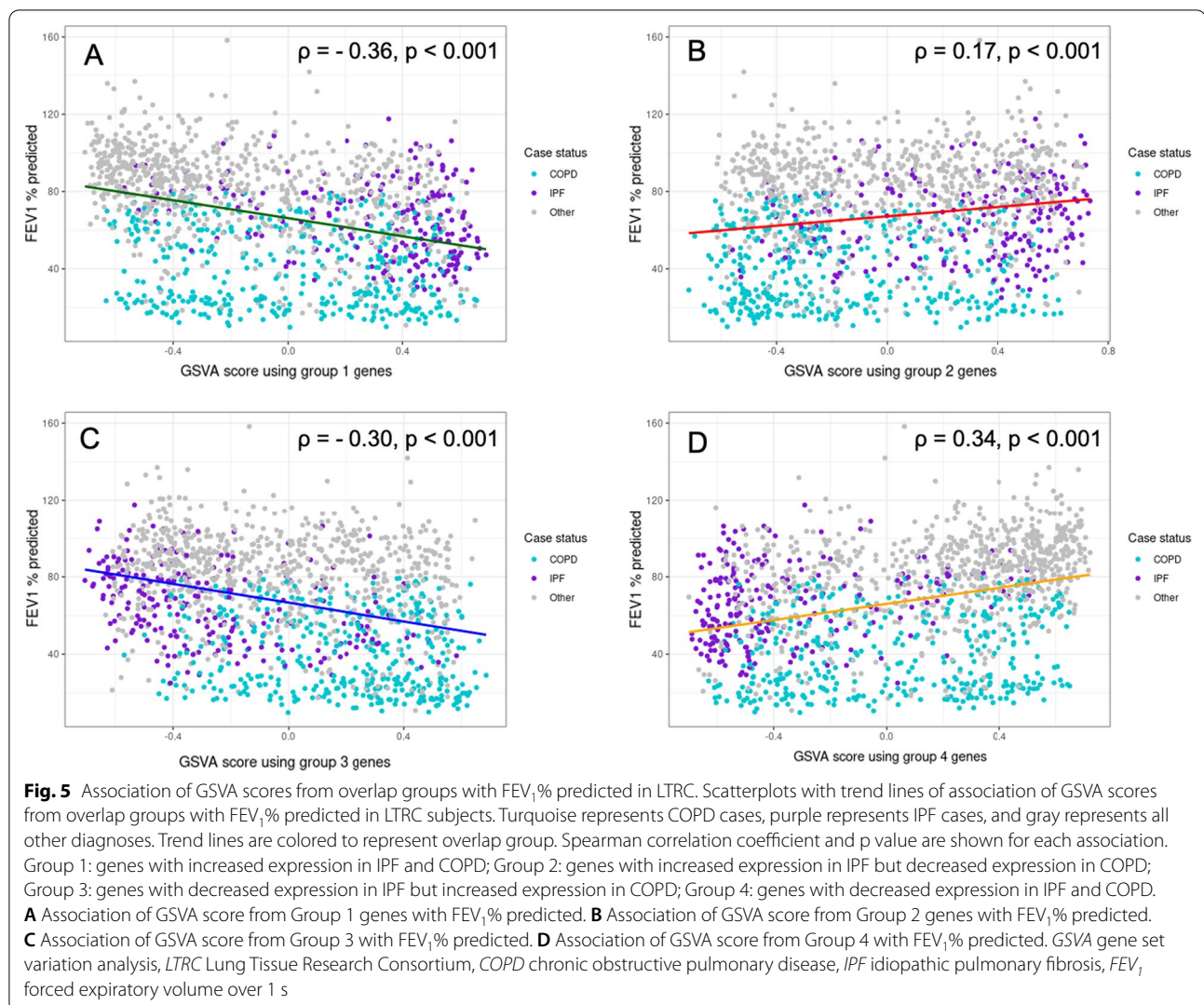
#### Gene set variation analysis in LTRC

We used GSVA to compute scores for the differentially expressed genes from Groups 1–4. The scores were applied in all LTRC subjects, including COPD subjects, IPF subjects, control subjects, and subjects with other diagnoses not included in the previous disease comparisons. We computed Spearman correlation of Group GSVA score with FEV<sub>1</sub>, % predicted and DLCO, %

predicted (Figs. 5 and 6). The Group 1 and Group 3 scores were negative correlated with FEV<sub>1</sub> and DLCO and the Group 4 score was positively correlated with FEV<sub>1</sub> and DLCO. The Group 2 score was positively correlated with FEV<sub>1</sub> but was not correlated with DLCO. There was qualitative visual clustering of both IPF and COPD cases by GSVA score in each group, though with more obvious clustering for IPF subjects than COPD subjects.

#### Gene set variation analysis validation in independent COPD and IPF cohorts

We sought to validate our findings in independent COPD and IPF cohorts with available gene expression data. Given the lack of widely available, large scale lung tissue gene expression data and for potential utility as disease biomarkers, we used RNA sequencing and microarray data available from whole blood. There were 1139 COPD cases (GOLD 1–4) and 1459 control subjects



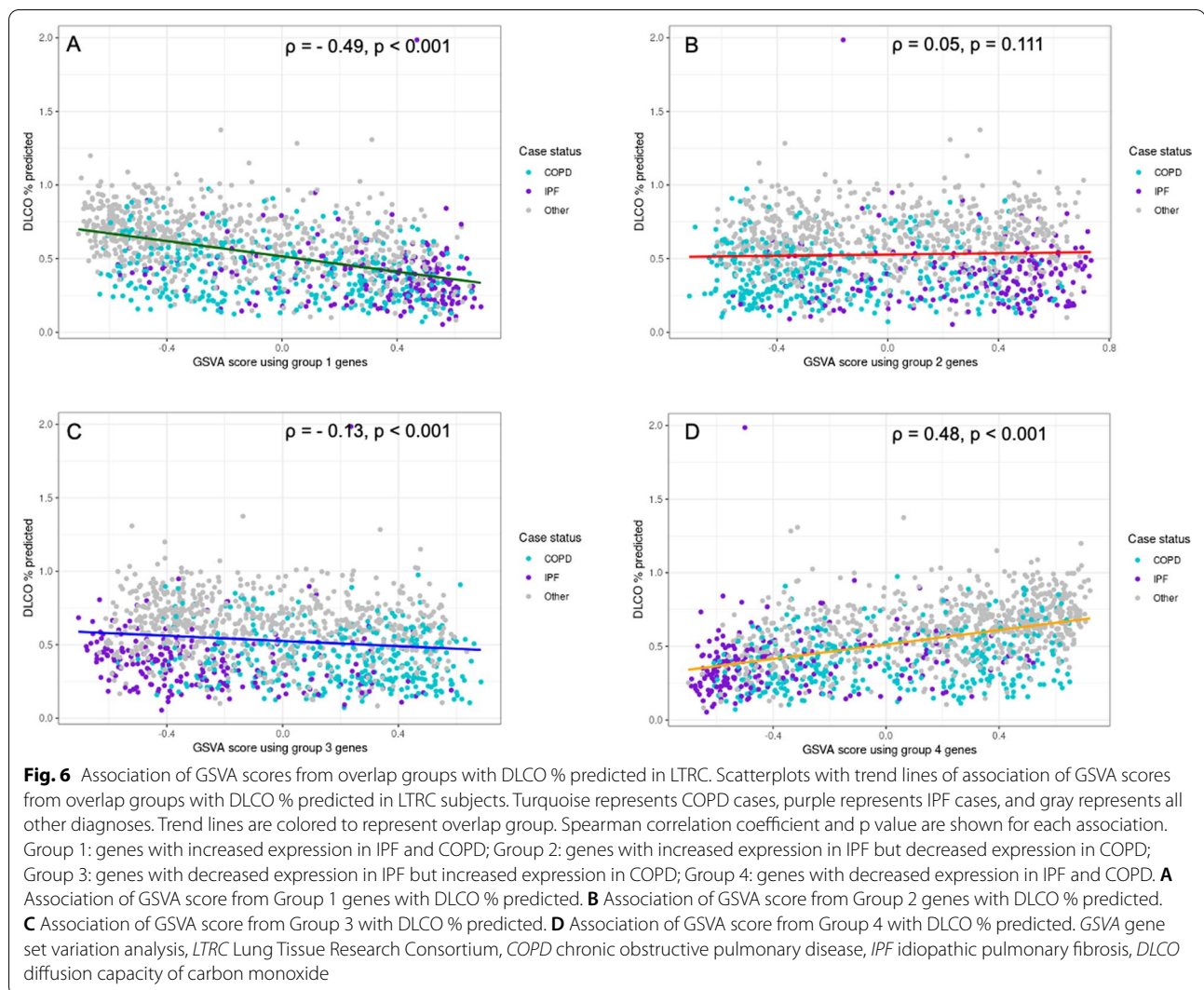
from COPDGene for whom RNA-Seq data was available (Additional file 2: Table S7). There were 49 subjects categorized as preserved ratio with impaired spirometry (PRISm) who were also included in the analysis. Cases were older, more likely to be male, more likely to be non-Hispanic white, had lower BMI, less likely to be current smokers, and had higher pack-years. Cases also had lower FEV<sub>1</sub>, % predicted, FEV<sub>1</sub>/FVC ratio, and DLCO, % predicted. There were 57 IPF subjects and 20 control subjects from the Molyneaux et al. study for whom gene expression microarray data was available (Additional file 2: Table S8). There was no difference in age and sex distribution between cases and controls. FVC (% predicted) and DLCO (% predicted) were not reported for control subjects.

GSVA scores were calculated for all subjects in COPDGene and the IPF study using the gene sets derived in LTRC in each of the overlap groups, Groups 1–4. Only

the Group 3 GSVA score was significantly different between both COPD cases and controls in COPDGene and IPF cases and controls in the Molyneaux et al. IPF study (Additional file 1: Fig. S3). The Group 2 GSVA score was also significantly different ( $p < 0.001$ ) between COPD cases and controls in COPDGene, while the Group 1 and Group 4 GSVA scores were significantly different ( $p < 0.001$  and  $p < 0.01$ , respectively) between IPF cases and controls in the Molyneaux et al. IPF study.

We tested the association of GSVA scores derived from Group 1–4 genes and clinical traits in COPDGene and the IPF study. Similar to case–control status, the Group 3 GSVA score was significantly associated with worse lung function in both COPDGene (FEV<sub>1</sub>% predicted) and the IPF dataset (FVC % predicted). The Group 2 score was also associated with FEV<sub>1</sub>% predicted as well as the square root of wall area of a hypothetical airway with 10 mm internal perimeter (Pi10) from chest CT scan





analysis (Additional file 2: Table S9). The Group 2 score was also nominally associated with DLCO % predicted and mortality in COPDGene, though the p-value did not reach the Bonferroni-corrected significance threshold. The Group 3 score was also only nominally associated with Pi10, percent emphysema, and DLCO % predicted.

In the IPF study, the Group 2 score was also correlated with FVC % predicted (Additional file 1: Fig. S4), but no Group scores were significantly correlated with DLCO % predicted (Additional file 1: Fig. S5).

## Discussion

In this study, we report results from a large sample size of lung tissue RNA sequencing from subjects with COPD and IPF. The overlap patterns of gene expression in lung tissue between the two diseases revealed four distinct groups. We demonstrated that one group of divergent genes in particular, the gene set with increased expression

in COPD but decreased expression in IPF (Group 3), was enriched for multiple genes identified by GWAS in IPF and COPD, enriched for important pathways including TNFA signaling via NFKB and TGFB signaling, and overrepresented by myeloid cell genes. These results characterize a unique gene expression signature that may represent specific inflammatory pathways that play a divergent role in the pathogenesis of COPD and IPF. Furthermore, overexpression of this gene signature in blood was associated with reduced lung function in both diseases.

The divergent role of inflammation in COPD and IPF has been independently established but has not been demonstrated using the contrast and overlap approach we employed above. Broadly, immune suppression with systemic corticosteroids has been shown to improve symptoms and reduce length of stay in acute COPD exacerbations [25], but the chronic use of inhaled

corticosteroids remains somewhat controversial. On the other hand, immune suppression with corticosteroids and azathioprine was associated with increased mortality in IPF [26].

TNFA signaling represents one such pathway we found to be divergent between COPD and IPF that has been examined in-depth in both diseases. TNFA has a long history in COPD but has ultimately been disappointing as an avenue for pharmacologic intervention. It is thought to play a role in the pathogenesis of COPD via expression from dysregulated monocytes [27] and subsequent apoptosis of cells in the alveolar wall [28], leading to the loss of lung parenchyma and development of emphysema [29]. However, while there may have been a trend toward benefit in a subgroup of subjects with cachexia, a randomized clinical trial of TNFA blockade in subjects with moderate to severe COPD failed to demonstrate a benefit [30]. The role of TNFA in IPF is less clear. While several studies have suggested the role of endogenous TNFA in potentiating the pathogenesis of IPF [31], there may be a protective effect of exogenous or overexpression of TNFA in IPF [32].

TGFB signaling represents another immune-related pathway that has been shown to be associated with both COPD and IPF. TGFB has been studied extensively in IPF and has been linked to inflammatory cell and fibroblast recruitment in the pathogenesis of fibrosis [33]. We found ubiquitous negative enrichment of TGFB signaling in IPF, which may reflect the expression consequences of disease rather than the elements involved in the pathogenesis. On the other hand, there were two distinct gene clusters of TGFB signaling enrichment in COPD, one with positive enrichment and one with negative enrichment. This may signify the presence of TGFB-determined subgroups in COPD [34], defined either by TGFB signaling enrichment or temporal differences of TGFB signaling (i.e. early vs. late). Interestingly, *TGFB2* gene expression, which was one of the genes associated with COPD by GWAS, was decreased in both COPD and IPF and did not belong to the divergent gene signature.

The overrepresentation of myeloid cell genes in the divergent gene expression signature between COPD and IPF further characterizes the opposing role of inflammation in the two diseases. While a small but distinct population of myeloid cells has been associated with IPF [35], several populations of myeloid cells, including alveolar macrophages, dendritic cells, neutrophils, and other cells that make up the foundational population of innate immunity, have been implicated in the chronic inflammation that has been a demonstrated hallmark of COPD [36].

We demonstrated the association of the divergent gene expression signature between the two diseases with

worse lung function in LTRC and validated these findings in independent COPD and IPF blood expression data sets. As discussed above, the divergent gene expression signature may represent specific inflammatory pathways that play a divergent role in the branching pathogenesis of the two diseases. Inflammation, both systemic [37, 38] and lung-specific [39], has been associated with worse lung function and progressive decline in COPD. We observed this effect in the COPD Gene study replication, with the divergent gene expression signature associated with decreased FEV<sub>1</sub> and nominally associated with airway wall thickness and mortality. In contrast, while there may be inflammatory aspects of IPF pathogenesis, the data on the role of inflammation in IPF progression are mixed. On one hand, increased innate and adaptive immune infiltrates distinguished rapid progressors from slow progressors in IPF [40]. Similarly, downregulation of CD28 on CD4 T cells has been shown to be associated with a dysregulated, increased immune response associated with progression of IPF [41]. Several genes that are a part of a 52-gene expression score predictive of survival in IPF belong to the costimulatory T cell activation signal [42, 43]. On the other hand, nintedanib [44, 45] and pirfenidone [46], the only pharmacologic interventions that have been shown to slow disease progression in IPF, are thought to affect fibroblast proliferation without a direct effect on inflammation or immune function. Thus, while our findings highlight the divergent gene expression signature with increased expression COPD and decreased expression in IPF, the association of this signature with worse lung function may belie an inflammatory subtype common to both diseases that results in reduced lung function.

While we were able to demonstrate validation of our findings across several analytic modalities and across two independent cohorts, we recognize that there are several limitations to our current study. First, we identified the gene signatures in lung tissue and used gene expression data from blood for validation. Ideally, we would use gene expression from independent lung tissue cohorts for replication. However, gene expression data from blood is much more widely available and in larger sample sizes by several orders of magnitude. In addition, our group has previously shown overlapping disease-specific gene expression across multiple tissue types [47], and peripheral blood is more accessible as a disease biomarker. Second, our use of bulk lung tissue for RNA sequencing has limited cellular precision compared to single cell RNA sequencing. We attempted to address this limitation by including results from a single cell RNA-Seq study in IPF to determine the cell composition of the gene expression overlap groups and cell deconvolution proportions between COPD, IPF, and controls. In addition, given the

pathologic heterogeneity associated with both COPD and IPF, we acknowledge that some of the findings may be attributable to differences in lung tissue sampling. However, we attempted to mitigate any differences associated with sampling by using strict, clinical and pathologic composite definitions. Third, subjects in LTRC underwent thoracic surgery for clinical indications, including lung cancer. While the study protocol included clear pathologic margins, any residual field effect could impact gene expression results [48]. Finally, given the advanced stage of disease in the IPF and COPD cases in LTRC, it is difficult to distinguish whether the gene expression in the lung tissue is a reflection of casual pathways or reactive changes. Future studies with early-stage samples may help clarify these results.

## Conclusions

Our study reveals a divergent gene signature with increased expression in COPD and decreased expression in IPF that highlights the opposing role of several inflammatory and immune-related pathways in lung tissue from COPD and IPF. We show that this gene signature is associated with reduced lung function in both COPD and IPF, suggesting the presence of a common inflammatory subtype with increased disease severity.

## Abbreviations

COPD: Chronic obstructive pulmonary disease; IPF: Idiopathic pulmonary fibrosis; GWAS: Genome-wide association study; eQTL: Expression quantitative trait locus; LTRC: Lung Tissue Research Consortium; FEV<sub>1</sub>: Forced expiratory volume in 1 s; FVC: Forced vital capacity; GOLD: Global Initiative for Chronic Obstructive Lung Disease; BMI: Body mass index; DLCO: Diffusion capacity for carbon monoxide; FDR: False discovery rate; GSVA: Gene set variation analysis; TGFB: Transforming growth factor beta signaling; TNFA: Tumor necrosis factor alpha signaling.

## Supplementary Information

The online version contains supplementary material available at <https://doi.org/10.1186/s12931-022-02013-w>.

**Additional file 1.** Supplementary methods and results.

**Additional file 2. Supplementary tables. Table S1.** IPF vs. control differential expression results. **Table S2.** COPD vs. control differential expression results. **Table S3.** Overlap genes from COPD and IPF vs. control differential expression. **Table S4.** COPD GWAS loci genes within  $\pm 200$  kb in overlapping differential expression genes. **Table S5.** IPF GWAS loci genes within  $\pm 200$  kb in overlapping differential expression genes. **Table S6.** Hallmark pathway enrichment. **Table S7.** COPDGene phase 2 RNASeq subject characteristics. **Table S8.** IPF study (Molyneaux et al.) subject characteristics. **Table S9.** GSVA score associations with outcomes in COPDGene.

## Acknowledgements

### NHLBI TOPMed: Lung Tissue Research Consortium

Molecular data from the Trans-Omics in Precision Medicine (TOPMed) program was supported by the National Heart, Lung, and Blood Institute (NHLBI). RNASeq for "NHLBI TOPMed: Lung Tissue Research Consortium" (p01662) was performed at the Northwest Genomics Center (HHSN268201600032). Core support including centralized genomic read mapping and genotype

calling, along with variant quality metrics and filtering were provided by the TOPMed Informatics Research Center (3R01HL-117626-02S1; contract HHSN268201800002). Core support including phenotype harmonization, data management, sample-identity QC, and general program coordination were provided by the TOPMed Data Coordinating Center (R01HL-120393; U01HL-120393; contract HHSN268201800001). We gratefully acknowledge the studies and participants who provided biological samples and data for TOPMed.

### COPDGene® Investigators—Core Units

**Administrative Center:** James D. Crapo, MD (PI); Edwin K. Silverman, MD, PhD (PI); Barry J. Make, MD; Elizabeth A. Regan, MD, PhD.

**Genetic Analysis Center:** Terri Beaty, PhD; Ferdouse Begum, PhD; Peter J. Castaldi, MD, MSc; Michael Cho, MD; Dawn L. DeMeo, MD, MPH; Adel R. Boueiz, MD; Marilyn G. Foreman, MD, MS; Eitan Halper-Stromberg; Lystra P. Hayden, MD, MMSc; Craig P. Hersh, MD, MPH; Jacqueline Hetmanski, MS, MPH; Brian D. Hobbs, MD; John E. Hokanson, MPH, PhD; Nan Laird, PhD; Christoph Lange, PhD; Sharon M. Lutz, PhD; Merry-Lynn McDonald, PhD; Margaret M. Parker, PhD; Dmitry Prokopenko, Ph.D.; Dandi Qiao, PhD; Elizabeth A. Regan, MD, PhD; Phuwant Sakornsakolpat, MD; Edwin K. Silverman, MD, PhD; Emily S. Wan, MD; Sungho Won, PhD.

**Imaging Center:** Juan Pablo Centeno; Jean-Paul Charbonnier, PhD; Harvey O. Coxson, PhD; Craig J. Galban, PhD; MeiLan K. Han, MD, MS; Eric A. Hoffman, Stephen Humphries, PhD; Francine L. Jacobson, MD, MPH; Philip F. Judy, PhD; Ella A. Kazerooni, MD; Alex Kluber; David A. Lynch, MB; Pietro Nardelli, PhD; John D. Newell, Jr., MD; Aleena Notary; Andrea Oh, MD; Elizabeth A. Regan, MD, PhD; James C. Ross, PhD; Raul San Jose Estepar, PhD; Joyce Schroeder, MD; Jered Sieren; Berend C. Stoel, PhD; Juerg Tschirren, PhD; Edwin Van Beek, MD, PhD; Bram van Ginneken, PhD; Eva van Rikxoort, PhD; Gonzalo Vegas Sanchez-Ferrero, PhD; Lucas Veitel; George R. Washko, MD; Carla G. Wilson, MS.

**PFT QA Center, Salt Lake City, UT:** Robert Jensen, PhD.

**Data Coordinating Center and Biostatistics, National Jewish Health, Denver, CO:** Douglas Everett, PhD; Jim Crooks, PhD; Katherine Pratte, PhD; Matt Strand, PhD; Carla G. Wilson, MS.

**Epidemiology Core, University of Colorado Anschutz Medical Campus, Aurora, CO:** John E. Hokanson, MPH, PhD; Gregory Kinney, MPH, PhD; Sharon M. Lutz, PhD; Kendra A. Young, PhD.

**Mortality Adjudication Core:** Surya P. Bhatt, MD; Jessica Bon, MD; Alejandro A. Diaz, MD, MPH; MeiLan K. Han, MD, MS; Barry Make, MD; Susan Murray, ScD; Elizabeth Regan, MD; Xavier Soler, MD; Carla G. Wilson, MS.

**Biomarker Core:** Russell P. Bowler, MD, PhD; Katerina Kechris, PhD; Farnoush Banaei-Kashani, Ph.D.

### COPDGene® Investigators—Clinical Centers

**Ann Arbor VA:** Jeffrey L. Curtis, MD; Perry G. Pernicano, MD.

**Baylor College of Medicine, Houston, TX:** Nicola Hanania, MD, MS; Mustafa Atik, MD; Aladin Boriek, PhD; Kalpatha Guntupalli, MD; Elizabeth Guy, MD; Amit Parulekar, MD.

**Brigham and Women's Hospital, Boston, MA:** Dawn L. DeMeo, MD, MPH; Alejandro A. Diaz, MD, MPH; Lystra P. Hayden, MD; Brian D. Hobbs, MD; Craig Hersh, MD, MPH; Francine L. Jacobson, MD, MPH; George Washko, MD.

**Columbia University, New York, NY:** R. Graham Barr, MD, DrPH; John Austin, MD; Belinda D'Souza, MD; Byron Thomashow, MD.

**Duke University Medical Center, Durham, NC:** Neil MacIntyre, Jr., MD; H. Page McAdams, MD; Lacey Washington, MD.

**Grady Memorial Hospital, Atlanta, GA:** Eric Flenaugh, MD; Silanth Terpenning, MD **HealthPartners Research Institute, Minneapolis, MN:** Charlene McEvoy, MD, MPH; Joseph Tashjian, MD.

**Johns Hopkins University, Baltimore, MD:** Robert Wise, MD; Robert Brown, MD; Nadia N. Hansel, MD, MPH; Karen Horton, MD; Allison Lambert, MD, MHS; Nirupama Putcha, MD, MHS.

**Lundquist Institute for Biomedical Innovation at Harbor UCLA Medical Center, Torrance, CA:** Richard Casaburi, PhD, MD; Alessandra Adami, PhD; Matthew Budoff, MD; Hans Fischer, MD; Janos Porszasz, MD, PhD; Harry Rossiter, PhD; William Stringer, MD.

**Michael E. DeBakey VAMC, Houston, TX:** Amir Sharafkhaneh, MD, PhD; Charlie Lan, DO.

**Minneapolis VA:** Christine Wendt, MD; Brian Bell, MD; Ken M. Kunisaki, MD, MS. **National Jewish Health, Denver, CO:** Russell Bowler, MD, PhD; David A. Lynch, MB.

**Reliant Medical Group, Worcester, MA:** Richard Rosiello, MD; David Pace, MD.

Temple University, Philadelphia, PA: Gerard Criner, MD; David Ciccolella, MD; Francis Cordova, MD; Chandra Dass, MD; Gilbert D'Alonzo, DO; Parag Desai, MD; Michael Jacobs, PharmD; Steven Kelsen, MD, PhD; Victor Kim, MD; A. James Mamary, MD; Nathaniel Marchetti, DO; Aditi Satti, MD; Kartik Shenoy, MD; Robert M. Steiner, MD; Alex Swift, MD; Irene Swift, MD; Maria Elena Vega-Sanchez, MD.

University of Alabama, Birmingham, AL: Mark Dransfield, MD; William Bailey, MD; Surya P. Bhatt, MD; Anand Iyer, MD; Hrudaya Nath, MD; J. Michael Wells, MD.

University of California, San Diego, CA: Douglas Conrad, MD; Xavier Soler, MD, PhD; Andrew Yen, MD.

University of Iowa, Iowa City, IA: Alejandro P. Comellas, MD; Karin F. Hoth, PhD; John Newell, Jr., MD; Brad Thompson, MD.

University of Michigan, Ann Arbor, MI: MeiLan K. Han, MD MS; Ella Kazerooni, MD MS; Wassim Labaki, MD MS; Craig Galban, PhD; Dharshan Vummidi, MD.

University of Minnesota, Minneapolis, MN: Joanne Billings, MD; Abbie Begnaud, MD; Tadashi Allen, MD.

University of Pittsburgh, Pittsburgh, PA: Frank Sciruba, MD; Jessica Bon, MD; Divay Chandra, MD, MSc; Carl Fuhrman, MD; Joel Weissfeld, MD, MPH.

University of Texas Health, San Antonio, San Antonio, TX: Antonio Anzueto, MD; Sandra Adams, MD; Diego Maselli-Caceres, MD; Mario E. Ruiz, MD; Harjinder Singh.

James D. Crapo, Edwin K. Silverman, Barry J. Make, Elizabeth A. Regan, Terri Beaty, Ferdouse Begum, Peter J. Castaldi, Michael Cho, Dawn L. DeMeo, Adel R. Boueiz, Marilyn G. Foreman, Eitan Halper-Stromberg, Lystra P. Hayden, Craig P. Hersh, Jacqueline Hetmanski, Brian D. Hobbs, John E. Hokanson, Nan Laird, Christoph Lange, Sharon M. Lutz, Merry-Lynn McDonald, Margaret M. Parker, Dmitry Prokopenko, Dandi Qiao, Phuwanat Sakornsakolpat, Emily S. Wan, Sungho Won, Juan Pablo Centeno, Jean-Paul Charbonnier, Harvey O. Coxson, Craig J. Galban, MeiLan K. Han, Eric A. Hoffman, Stephen Humphries, Francine L. Jacobson, Philip F. Judy, Ella A. Kazerooni, Alex Klueber, David A. Lynch, Pietro Nardelli, John D. Newell Jr, Aleena Notary, Andrea Oh, James C. Ross, Raul San Jose Estepar, Joyce Schroeder, Jered Sieren, Berend C. Stoel, Juerg Tschirren, Edwin Van Beeck, Bram van Ginneken, Eva van Rikxoort, Gonzalo Vegas Sanchez-Ferrero, Lucas Veitel, George R. Washko, Carla G. Wilson, Robert Jensen, Douglas Everett, Jim Crooks, Katherine Pratte, Matt Strand, Gregory Kinney, Kendra A. Young, Surya P. Bhatt, Jessica Bon, Alejandro A. Diaz, Susan Murray, Xavier Soler, Russell P. Bowler, Katerina Kechris, Farnoush Banaei-Kashani, Jeffrey L. Curtis, Perry G. Pernicano, Nicola Hanania, Mustafa Atik, Aladin Boriek, Kalpatha Guntupalli, Elizabeth Guy, Amit Parulekar, R. Graham Barr, John Austin, Belinda D'Souza, Byron Thomashow, Neil MacIntyre Jr, H. Page McAdams, Lacey Washington, Eric Flenaugh, Silanth Terpenning, Charlene McEvoy, Joseph Tashjian, Robert Wise, Robert Brown, Nadia N. Hansel, Karen Horton, Allison Lambert, Nirupama Putcha, Richard Casaburi, Alessandra Adami, Matthew Budoff, Hans Fischer, Janos Porszasz, Harry Rossiter, William Stringer, Amir Sharafkhaneh, Charlie Lan, Christine Wendt, Brian Bell, Ken M. Kunisaki, Richard Rosiello, David Pace, Gerard Criner, David Ciccolella, Francis Cordova, Chandra Dass, Gilbert D'Alonzo, Parag Desai, Michael Jacobs, Steven Kelsen, Victor Kim, A. James Mamary, Nathaniel Marchetti, Aditi Satti, Kartik Shenoy, Robert M. Steiner, Alex Swift, Irene Swift, Maria Elena Vega-Sanchez, Mark Dransfield, William Bailey, Anand Iyer, Hrudaya Nath, J. Michael Wells, Douglas Conrad, Andrew Yen, Alejandro P. Comellas, Karin F. Hoth, Brad Thompson, Wassim Labaki, Dharshan Vummidi, Joanne Billings, Abbie Begnaud, Tadashi Allen, Frank Sciruba, Divay Chandra, Carl Fuhrman, Joel Weissfeld, Antonio Anzueto, Sandra Adams, Diego Maselli-Caceres, Mario E. Ruiz, Harjinder Singh

#### Author contributions

Concept and design: AJG and CPH; data collection: FS, LB, AL, KF, GC, KB, RW, FJM, DM, DLD, MHC, EKS, PJC, and CPH; data analysis: AJG, BDH, JHY, AS, MM, JDM, MHC, EKS, PJC, and CPH; statistical support: AJG, BDH, JHY, AS, MM, ZX, RPC, JDM, JZ, and CPH; manuscript writing/editing: AJG, BDH, JHY, AS, MM, ZX, RPC, JDM, MHC, DLD, EKS, PJC, and CPH. All authors read and approved the final manuscript.

#### Funding

Supported by NIH Grants: R01HL130512, R01HL125583, U01HL089856, U01HL089897, R01HL124233, R01HL147326, T32HL007427, P01HL114501. COPDGene is also supported by the COPD Foundation through contributions made to an Industry Advisory Board comprised of AstraZeneca, Boehringer-Ingelheim, Genentech, GlaxoSmithKline, Novartis, Pfizer, Siemens, and Sunovion.

#### Availability of data and materials

Data are available on the NCBI database of Genotypes and Phenotypes (dbGaP), accessions phs000179 and phs000765 (COPDGene) and phs001662 (LTRC).

#### Declarations

##### Ethics approval and consent to participate

Institutional review boards approved the study at all participating institutions and all patients provided written informed consent per LTRC protocol (Mass General Brigham IRB approval #2018P000186).

##### Consent for publication

Not applicable.

##### Competing interests

EKS received grant support from GlaxoSmithKline and Bayer. CPH reports grant support from Boehringer-Ingelheim, Novartis, Bayer and Vertex, outside of this study. PJC has received grant support from GlaxoSmithKline and Bayer and consulting fees from GlaxoSmithKline and Novartis. MHC has received grant support from GlaxoSmithKline and Bayer, consulting fees from Genentech and AstraZeneca, and speaking fees from Illumina. DLD has received from the National Institutes of Health, the Alpha 1 Foundation and Bayer and honoraria from Novartis. KKB has received grants from NHLBI, serves on the board of the Open Source Imaging Consortium (OSIC), and personal fees from Biogen, Galecto, Third Pole, Galapagos, Boehringer Ingelheim, Theravance, Pliant, Blade Therapeutics, Huitai Biomedicine, Lilly, Dispersol, DevPro Biopharma, Sanofi, Bristol Myers Squibb, and Humanetics outside the submitted work. LB has received contract funding from NHLBI, during the conduct of the study. RW has received personal fees from AstraZeneca, grants and personal fees from Boehringer Ingelheim, personal fees from Contrafect, personal fees from Roche-Genentech, personal fees from Merck, grants and personal fees from Verona, personal fees from Mylan/Theravance, non-financial support from Propeller Health, grants from Sanofi-Aventis, personal fees from AbbVie, personal fees from GSK, personal fees from ChemRx, personal fees from Kiniksa, personal fees from Bristol Myers Squibb, personal fees from Galderma, personal fees from Kamada, personal fees from Pulmonx, personal fees from Kinevant, personal fees from PureTech, personal fees from Arrowhead, personal fees from VaxArt, personal fees from Polarean, outside the submitted work. KF has received personal fees from Boehringer Ingelheim, personal fees from Roche/Genentech, personal fees from Bellerophon, personal fees from Respivant, personal fees from Blade Therapeutics, personal fees from Shionogi, outside the submitted work. FJM has received personal fees from GlaxoSmithKline, personal fees from AstraZeneca, personal fees from Boehringer Ingelheim, personal fees from Raziol, during the conduct of the study; personal fees and non-financial support from AstraZeneca, personal fees and non-financial support from Boehringer Ingelheim, non-financial support from ProterrixBio, personal fees, non-financial support and other from Genentech, personal fees and non-financial support from GlaxoSmithKline, personal fees from MD Magazine, personal fees from Methodist Hospital Brooklyn, personal fees and non-financial support from Miller Communications, personal fees and non-financial support from National Society for Continuing Education, personal fees from New York University, personal fees and non-financial support from PeerView Communications, personal fees and non-financial support from Chiesi, personal fees and non-financial support from Sunovion, personal fees from UpToDate, personal fees from WebMD/MedScape, other from Afferent/Merck, non-financial support from Gilead, non-financial support from Nitto, personal fees from Patara/Respivant, other from Biogen, other from VeracYTE, non-financial support from Zambon, personal fees from American Thoracic Society, grants from NIH, personal fees and non-financial support from Physicians Education Resource, personal fees from Rockpointe, other from Prometic, grants from Rare Disease Healthcare Communications, personal fees and other from Bayer, other from Bridge Biotherapeutics, personal fees and non-financial support from Canadian Respiratory Network, grants from ProMedior/Roche, personal fees and non-financial support from Teva, personal fees from CME Outfitters, personal fees and non-financial support from Csl Behring, personal fees from Dartmouth University, personal fees from DevPro, from Gala, personal fees from Integritas, personal fees from IQVIA, personal fees from Projects in Knowledge, personal fees and non-financial support from Sanofi/Regeneron, from twoXAR, personal fees from Vindico, other from

AbbVie, personal fees from Academy for Continuing Healthcare Learning, outside the submitted work. All other authors report nothing to disclose.

#### Author details

<sup>1</sup>Channing Division of Network Medicine, Department of Medicine, Brigham and Women's Hospital, 181 Longwood Avenue, Boston, MA 02115, USA. <sup>2</sup>Division of Pulmonary and Critical Care Medicine, Department of Medicine, Brigham and Women's Hospital, Boston, MA, USA. <sup>3</sup>Harvard Medical School, Boston, MA, USA. <sup>4</sup>Division of Pulmonary, Allergy and Critical Care Medicine, Department of Medicine, University of Pittsburgh, Pittsburgh, PA, USA. <sup>5</sup>The Emmes Company, Rockville, MD, USA. <sup>6</sup>Division of Pulmonary and Critical Care Medicine, Department of Internal Medicine, Mayo Clinic, Rochester, MN, USA. <sup>7</sup>Division of Pulmonary and Critical Care Medicine, Department of Internal Medicine, University of Michigan Health System, Ann Arbor, MI, USA. <sup>8</sup>Department of Thoracic Medicine and Surgery, Temple University, Philadelphia, PA, USA. <sup>9</sup>Department of Medicine, National Jewish Health, Denver, CO, USA. <sup>10</sup>Division of Pulmonary and Critical Care Medicine, Johns Hopkins School of Medicine, Baltimore, MD, USA. <sup>11</sup>Division of Pulmonary and Critical Care Medicine, Department of Medicine, Weill Cornell Medicine, New York, NY, USA. <sup>12</sup>Northwest Genomics Center, University of Washington, Seattle, WA, USA.

Received: 19 October 2021 Accepted: 4 April 2022

Published online: 21 April 2022

#### References

- Sakornsakolpat P, Prokopenko D, Lamontagne M, Reeve NF, Guyatt AL, Jackson VE, et al. Genetic landscape of chronic obstructive pulmonary disease identifies heterogeneous cell-type and phenotype associations. *Nat Genet.* 2019;51(3):494–505.
- Shrine N, Guyatt AL, Erzurumluoglu AM, Jackson VE, Hobbs BD, Melbourne CA, et al. New genetic signals for lung function highlight pathways and chronic obstructive pulmonary disease associations across multiple ancestries. *Nat Genet.* 2019;51(3):481–93.
- Hobbs BD, de Jong K, Lamontagne M, Bossé Y, Shrine N, Artigas MS, et al. Genetic loci associated with chronic obstructive pulmonary disease overlap with loci for lung function and pulmonary fibrosis. *Nat Genet.* 2017;49(3):426–32.
- Allen RJ, Guillen-Guio B, Oldham JM, Ma SF, Dressen A, Paynton ML, et al. Genome-wide association study of susceptibility to idiopathic pulmonary fibrosis. *Am J Respir Crit Care Med.* 2020;201(5):564–74.
- Kusko RL, Brothers JF, Tedrow J, Pandit K, Huleihel L, Perdomo C, et al. Integrated genomics reveals convergent transcriptomic networks underlying chronic obstructive pulmonary disease and idiopathic pulmonary fibrosis. *Am J Respir Crit Care Med.* 2016;194(8):948–60.
- Duckworth A, Gibbons MA, Allen RJ, Almond H, Beaumont RN, Wood AR, et al. Telomere length and risk of idiopathic pulmonary fibrosis and chronic obstructive pulmonary disease: a mendelian randomisation study. *Lancet Respir Med.* 2020. [https://doi.org/10.1016/S2213-2600\(20\)30364-7](https://doi.org/10.1016/S2213-2600(20)30364-7).
- Childs BG, Baker DJ, Kirkland JL, Campisi J, Deursen JM. Senescence and apoptosis: dueling or complementary cell fates? *EMBO Rep.* 2014;15(11):1139–53.
- Korfei M, Ruppert C, Mahavadi P, Henneke I, Markart P, Koch M, et al. Epithelial endoplasmic reticulum stress and apoptosis in sporadic idiopathic pulmonary fibrosis. *Am J Respir Crit Care Med.* 2008;178(8):838–46. <https://doi.org/10.1164/rccm.200802-313OC>.
- Müller K-C, Welker L, Paasch K, Feindt B, Erpenbeck V, Hohlfeld J, et al. Lung fibroblasts from patients with emphysema show markers of senescence in vitro. *Respir Res.* 2006;7(1):32. <https://doi.org/10.1186/1465-9921-7-32>.
- Chilosi M, Poletti V, Rossi A. The pathogenesis of COPD and IPF: distinct horns of the same devil? *Respir Res.* 2012;13:1–9.
- Chilosi M, Poletti V, Zamò A, Lestani M, Montagna L, Piccoli P, et al. Aberrant Wnt/ $\beta$ -catenin pathway activation in idiopathic pulmonary fibrosis. *Am J Pathol.* 2003;162(5):1495–502.
- Wang R, Ahmed J, Wang G, Hassan I, Strulovici-Barel Y, Hackett NR, et al. Down-regulation of the canonical Wnt  $\beta$ -catenin pathway in the airway epithelium of healthy smokers and smokers with COPD. *PLoS ONE.* 2011;6(4):e14793. <https://doi.org/10.1371/journal.pone.0014793>.
- Yang IV, Pedersen BS, Rabinovich E, Hennessy CE, Davidson EJ, Murphy E, et al. Relationship of DNA methylation and gene expression in idiopathic pulmonary fibrosis. *Am J Respir Crit Care Med.* 2014;190(11):1263–72. <https://doi.org/10.1164/rccm.201408-1452OC>.
- Raghu G, Collard HR, Egan JJ, Martinez FJ, Behr J, Brown KK, et al. An official ATS/ERS/JRS/ALAT statement: idiopathic pulmonary fibrosis: evidence-based guidelines for diagnosis and management. *Am J Respir Crit Care Med.* 2011;183(6):788–824. <https://doi.org/10.1164/rccm.2009-040GL>.
- Global Initiative for Chronic Obstructive Lung Disease (GOLD). GOLD 2021 global strategy for the diagnosis, management, and prevention of chronic obstructive pulmonary disease. <https://goldcopd.org/2021-gold-reports/>.
- Regan EA, Hokanson JE, Murphy JR, Make B, Lynch DA, Beaty TH, et al. Genetic epidemiology of COPD (COPDGene) study design. *COPD J Chronic Obstr Pulm Dis.* 2011;7(1):32–43. <https://doi.org/10.3109/15412550903499522>.
- Molyneux PL, Willis-Owen SAG, Cox MJ, James P, Cowman S, Loebinger M, et al. Host-microbial interactions in idiopathic pulmonary fibrosis. *Am J Respir Crit Care Med.* 2017;195(12):1640–50.
- Hänzelmann S, Castelo R, Guinney J. GSEA: gene set variation analysis for microarray and RNA-Seq data. *BMC Bioinform.* 2013;14(1):7. <https://doi.org/10.1186/1471-2105-14-7>.
- Jew B, Alvarez M, Rahmani E, Miao Z, Ko A, Garske KM, et al. Accurate estimation of cell composition in bulk expression through robust integration of single-cell information. *Nat Commun.* 2020;11(1):1971.
- Ghosh AJ, Saferali A, Lee S, Chase R, Morrow J, Castaldi P, et al. Blood gene expression in systemic vs lung phenotypes of chronic obstructive pulmonary disease (COPD). *Am J Respir Crit Care Med.* 2020; Online Abs:A6426–A6426.
- Adams TS, Schupp JC, Poli S, Ayaub EA, Neumark N, Ahangari F, et al. Single-cell RNA-seq reveals ectopic and aberrant lung-resident cell populations in idiopathic pulmonary fibrosis. *Sci Adv.* 2020;6(28):eaba1983. <https://doi.org/10.1126/sciadv.aba1983>.
- Travaglini KJ, Nabhan AN, Penland L, Sinha R, Gillich A, Sit RV, et al. A molecular cell atlas of the human lung from single-cell RNA sequencing. *Nature.* 2020;587(7835):619–25.
- Tanabe N, Vasilescu DM, Hague CJ, Ikezoe K, Murphy DT, Kirby M, et al. Pathological comparisons of paraseptal and centrilobular emphysema in chronic obstructive pulmonary disease. *Am J Respir Crit Care Med.* 2020;202(6):803–11. <https://doi.org/10.1164/rccm.201912-2327OC>.
- Reyfman PA, Walter JM, Joshi N, Anekalla KR, McQuattie-Pimentel AC, Chiu S, et al. Single-cell transcriptomic analysis of human lung provides insights into the pathobiology of pulmonary fibrosis. *Am J Respir Crit Care Med.* 2019;199(12):1517–36. <https://doi.org/10.1164/rccm.201712-2410OC>.
- Leuppi JD, Schuetz P, Bingisser R, Bodmer M, Briel M, Drescher T, et al. Short-term vs conventional glucocorticoid therapy in acute exacerbations of chronic obstructive pulmonary disease: the REDUCE randomized clinical trial. *JAMA.* 2013;309(21):2223–31.
- The Idiopathic Pulmonary Fibrosis Clinical Research Network. Prednisone, azathioprine, and N-acetylcysteine for pulmonary fibrosis. *N Engl J Med.* 2012;366(21):1968–77. <https://doi.org/10.1056/nejmoa1113354>.
- de Godoy I, Donahoe M, Calhoun WJ, Mancino J, Rogers RM. Elevated TNF-alpha production by peripheral blood monocytes of weight-losing COPD patients. *Am J Respir Crit Care Med.* 1996;153(2):633–7. <https://doi.org/10.1164/ajrccm.153.2.8564110>.
- Zheng T, Kang MJ, Crothers K, Zhu Z, Liu W, Lee CG, et al. Role of cathepsin S-dependent epithelial cell apoptosis in IFN- $\gamma$ -induced alveolar remodeling and pulmonary emphysema. *J Immunol.* 2005;174(12):8106–15. <https://doi.org/10.4049/jimmunol.174.12.8106>.
- Saetta M, Turato G, Maestrelli P, Mapp CE, Fabbri LM. Cellular and structural bases of chronic obstructive pulmonary disease. *Am J Respir Crit Care Med.* 2001;163(6):1304–9. <https://doi.org/10.1164/ajrccm.163.6.2009116>.
- Rennard SI, Fogarty C, Kelsen S, Long W, Ramsdell J, Allison J, et al. The safety and efficacy of infliximab in moderate to severe chronic obstructive pulmonary disease. *Am J Respir Crit Care Med.* 2007;175(9):926–34.
- Fujita M, Shannon JM, Morikawa O, Gauldie J, Hara N, Mason RJ. Overexpression of tumor necrosis factor- $\alpha$  diminishes pulmonary fibrosis

- induced by bleomycin or transforming growth factor- $\beta$ . *Am J Respir Cell Mol Biol.* 2003;29(6):669–76.
32. Redente EF, Keith RC, Janssen W, Henson PM, Ortiz LA, Downey GP, et al. Tumor necrosis factor- $\alpha$  accelerates the resolution of established pulmonary fibrosis in mice by targeting profibrotic lung macrophages. *Am J Respir Cell Mol Biol.* 2014;50(4):825–37.
  33. Fernandez IE, Eickelberg O. The impact of TGF- $\beta$  on lung fibrosis. *Proc Am Thorac Soc.* 2012;9(3):111–6. <https://doi.org/10.1513/pats.201203-023AW>.
  34. Zhang J-C, Chen G, Chen L, Meng Z-J, Xiong X-Z, Liu H-J, et al. TGF- $\beta$ /BAMBI pathway dysfunction contributes to peripheral Th17/Treg imbalance in chronic obstructive pulmonary disease. *Sci Rep.* 2016;6(1):31911.
  35. Morse C, Tabib T, Sembrat J, Buschur KL, Bittar HT, Valenzi E, et al. Proliferating SPP1/MERTK-expressing macrophages in idiopathic pulmonary fibrosis. *Eur Respir J.* 2019;54(2):1802441. <https://doi.org/10.1183/13993003.02441-2018>.
  36. Ni L, Dong C. Roles of myeloid and lymphoid cells in the pathogenesis of chronic obstructive pulmonary disease. *Front Immunol.* 2018. <https://doi.org/10.3389/fimmu.2018.01431/full>.
  37. Fogarty AW, Jones S, Britton JR, Lewis SA, McKeever TM. Systemic inflammation and decline in lung function in a general population: a prospective study. *Thorax.* 2007;62(6):515–20. <https://doi.org/10.1136/thx.2006.066969>.
  38. Halper-Stromberg E, Yun JH, Parker MM, Singer RT, Gaggar A, Silverman EK, et al. Systemic markers of adaptive and innate immunity are associated with chronic obstructive pulmonary disease severity and spirometric disease progression. *Am J Respir Cell Mol Biol.* 2018;58(4):500–9. <https://doi.org/10.1165/rcmb.2017-0373OC>.
  39. Miller M, Cho JY, Pham A, Friedman PJ, Ramsdell J, Broide DH. Persistent airway inflammation and emphysema progression on CT scan in ex-smokers observed for 4 years. *Chest.* 2011;139(6):1380–7.
  40. Balestro E, Calabrese F, Turato G, Lunardi F, Bazzan E, Marulli G, et al. Immune inflammation and disease progression in idiopathic pulmonary fibrosis. *PLoS ONE.* 2016;11(5):e0154516. <https://doi.org/10.1371/journal.pone.0154516>.
  41. Gilani SR, Vuga LJ, Lindell KO, Gibson KF, Xue J, Kaminski N, et al. CD28 down-regulation on circulating CD4 T-cells is associated with poor prognoses of patients with idiopathic pulmonary fibrosis. *PLoS ONE.* 2010;5(11):e8959. <https://doi.org/10.1371/journal.pone.0008959>.
  42. Herazo-Maya JD, Noth I, Duncan SR, Kim S, Ma S-F, Tseng GC, et al. Peripheral blood mononuclear cell gene expression profiles predict poor outcome in idiopathic pulmonary fibrosis. *Sci Transl Med.* 2013;5(205):205ra136. <https://doi.org/10.1126/scitranslmed.3005964>.
  43. Herazo-Maya JD, Sun J, Molyneaux PL, Li Q, Villalba JA, Tzouveleakis A, et al. Validation of a 52-gene risk profile for outcome prediction in patients with idiopathic pulmonary fibrosis: an international, multicentre, cohort study. *Lancet Respir Med.* 2017;5(11):857–68. [https://doi.org/10.1016/S2213-2600\(17\)30349-1](https://doi.org/10.1016/S2213-2600(17)30349-1).
  44. Richeldi L, du Bois RM, Raghu G, Azuma A, Brown KK, Costabel U, et al. Efficacy and safety of nintedanib in idiopathic pulmonary fibrosis. *N Engl J Med.* 2014;370(22):2071–82. <https://doi.org/10.1056/NEJMoa1402584>.
  45. Costabel U, Inoue Y, Richeldi L, Collard HR, Tschöepe I, Stowasser S, et al. Efficacy of nintedanib in idiopathic pulmonary fibrosis across prespecified subgroups in INPULSIS. *Am J Respir Crit Care Med.* 2016;193(2):178–85.
  46. King TE, Bradford WZ, Castro-Bernardini S, Fagan EA, Glaspole I, Glassberg MK, et al. A phase 3 trial of pirfenidone in patients with idiopathic pulmonary fibrosis. *N Engl J Med.* 2014;370(22):2083–92. <https://doi.org/10.1056/NEJMoa1402582>.
  47. Morrow JD, Chase RP, Parker MM, Glass K, Seo M, Divo M, et al. RNA-sequencing across three matched tissues reveals shared and tissue-specific gene expression and pathway signatures of COPD. *Respir Res.* 2019;20(1):1–12.
  48. Lochhead P, Chan AT, Nishihara R, Fuchs CS, Beck AH, Giovannucci E, et al. Etiologic field effect: reappraisal of the field effect concept in cancer predisposition and progression. *Mod Pathol.* 2015;28(1):14–29.

## Publisher's Note

Springer Nature remains neutral with regard to jurisdictional claims in published maps and institutional affiliations.

Ready to submit your research? Choose BMC and benefit from:

- fast, convenient online submission
- thorough peer review by experienced researchers in your field
- rapid publication on acceptance
- support for research data, including large and complex data types
- gold Open Access which fosters wider collaboration and increased citations
- maximum visibility for your research: over 100M website views per year

At BMC, research is always in progress.

Learn more [biomedcentral.com/submissions](https://biomedcentral.com/submissions)

