

Superoxide Dismutase Levels and Polymorphism (*Ala16Val*) In Tuberculosis Patients with Diabetes Mellitus in Medan City

Mutiara Indah Sari^{1*}, Milahayati Daulay², Dian Dwi Wahyuni³

¹Departement of Biochemistry, Faculty of Medicine, Universitas Sumatera Utara, Jl. Dr. Mansur No.5 Medan, Indonesia;

²Departement of Physiology, Faculty of Medicine, Universitas Sumatera Utara, Jl. Dr. Mansur No.5 Medan, Indonesia;

³Departement of Microbiology, Faculty of Medicine, Universitas Sumatera Utara, Jl. Dr. Mansur No.5 Medan, Indonesia

Abstract

Citation: Sari MI, Daulay M, Wahyuni DD. Superoxide Dismutase Levels and Polymorphism (*Ala16Val*) In Tuberculosis Patients with Diabetes Mellitus in Medan City. Open Access Maced J Med Sci. 2019 Mar 15; 7(5):730-735. https://doi.org/10.3889/oamjms.2019.195

Keywords: Superoxide Dismutase; Gene; Polymorphism; Tuberculosis; Diabetes Mellitus

***Correspondence:** Mutiara Indah Sari. Departement of Biochemistry, Faculty of Medicine, Universitas Sumatera Utara, Jl. Dr Mansur No.5 Medan, Indonesia. E-mail: mutiara@usu.ac.id

Received: 01-Jan-2019; **Revised:** 21-Feb-2019; **Accepted:** 22-Feb-2019; **Online first:** 14-Mar-2019

Copyright: © 2019 Mutiara Indah Sari, Milahayati Daulay, Dian Dwi Wahyuni. This is an open-access article distributed under the terms of the Creative Commons Attribution-NonCommercial 4.0 International License (CC BY-NC 4.0)

Funding: The study is supported by Universitas Sumatera Utara (USU) under the research grant TALENTA USU in the year of 2017 and 2018 with Contract Number with Contract Number 5338/UN5.1.R/PPM/2017 and 2590/UN5.1.R/PPM/2018

Competing Interests: The authors have declared that no competing interests exist

BACKGROUND: Infectious diseases and metabolic disorders would result in oxidative stress in cells. Superoxide dismutase (SOD) is an antioxidant present inside cells that acts against oxidative stress. SOD gene polymorphism can affect the activity and levels of SOD.

AIM: This study aimed to analyse SOD levels and polymorphism of gene (*ala16val*) that regulated SOD in tuberculosis patients with diabetes mellitus in Medan city.

METHODS: A total of 40 tuberculosis patients with diabetes mellitus and 40 healthy subjects participated in the study. The levels of SOD were measured using enzyme-linked immunosorbent assay (ELISA). Analysis of SOD gene polymorphism (*ala16val*) was done using polymerase chain reaction-restriction fragment lengths polymorphisms (PCR-RFLP) with *BsaW1* as the restriction enzyme. The statistical significance was determined using the Mann Whitney test, Fisher's exact test, and Kruskal Wallis test ($p < 0.05$).

RESULTS: The SOD levels of tuberculosis patients with diabetes mellitus were lower than those of the healthy subjects (102.474 ± 36.07 U/L vs 294.543 ± 58.75 U/L, $p < 0.05$). Patients of tuberculosis with diabetes mellitus tend to have more *Val/Val* genotypes than the healthy group (57.5% vs 50%, $p > 0.05$). There was no association between SOD levels and SOD gene polymorphism (*ala16val*) in tuberculosis patients with diabetes mellitus.

CONCLUSION: In this study, there was an association between the levels of SOD and tuberculosis patients with diabetes mellitus, but not for the SOD gene polymorphism (*ala16val*). The SOD gene polymorphism (*ala16val*) was not the key role to influence the SOD levels in tuberculosis patients with diabetes mellitus in Medan city.

Introduction

Tuberculosis is an infectious disease which has been known to result in the highest mortality rate among bacterial infections in the world. Since 1992, the World Health Organization (WHO) has announced that tuberculosis infection is a global emergency. In Indonesia, tuberculosis infection is one of the major public health problems. Indonesia is one of five countries in the world which have the highest number of tuberculosis patients along with India, China, South Africa, and Nigeria [1].

To date, experts suggest that there is a disorder in the immune system of tuberculosis

patients [2]. The cell's defence towards tuberculosis infection activates the immune system and causes oxidation-reduction (redox) imbalance. Antioxidants, such as superoxide dismutase (SOD), catalase (CAT), glutathione peroxidase (GPx) and others, can decrease this effect. However, previous studies showed that the activity or levels of SOD decreased in tuberculosis patients [3], [4].

In tuberculosis patients, the decrease of antioxidant levels can be worse in the presence of comorbidity conditions, such as metabolic disorder namely diabetes mellitus (DM). DM is an important risk factor for tuberculosis [5]. Eight of ten countries with the highest incidence of DM are also the countries with the highest number of tuberculosis

cases [6]. Several epidemiological studies have suggested the need to see the interaction between tuberculosis infections and DM [7].

DM is a chronic metabolic disorder that occurs when the pancreas is unable to produce insulin or when there is an occurrence of cell failure in using insulin effectively. This condition leads to metabolic disorders characterised by elevated blood glucose levels or hyperglycemia. Various complications of DM are related to increased oxidation of blood glucose. There is an abnormality in immunity and cell-mediated phagocyte function. The process will produce reactive oxygen species (ROS) which will increase oxidants and lipid peroxides [8]. A previous study showed an increase in lipid peroxides compounds, such as malondialdehyde in hyperglycemic conditions [9].

In DM, increased oxidants and lipid peroxides correlated with the decrease of antioxidant levels [10]. Previous studies exhibited a reduction of antioxidant levels in diabetic patients [11], [12]. SOD synthesis is regulated by specific SOD gene sequences. Single nucleotide polymorphism (SNP) or substitution of one nucleotide base in the SOD gene contributes to the expression of SOD. Differences in gene sequences determine the changes in gene expression and affect disease development [13]. SNP in the SOD gene was associated with the total antioxidant capacity in DM [14]. A study on diabetic patients by Flekac et al., (2008) found that SOD1 and SOD2 polymorphisms affect SOD activity [15].

Therefore, this study aimed to analyse the superoxide dismutase levels and SOD gene polymorphism (ala16val) in tuberculosis patients with diabetes mellitus in Medan city.

Methods

Subjects

This study was a cross-sectional design. Forty patients diagnosed with tuberculosis and diabetes mellitus were recruited at the health care facilities for pulmonary disease in Medan city. The diagnoses were made based on the criteria of Indonesian Lung Doctor Association [16] and the criteria of Indonesian Endocrinology Society [17]. The healthy subjects were recruited from a gym place in Medan city. The healthy subjects should not have a familial history of diabetes mellitus. Subjects who took vitamin supplements, who had infections such as HIV, hepatitis, or other malignant diseases, and who drank alcohol were excluded from this study.

Ethics

Each subject gave written informed consent

after receiving a brief description of the purposes and benefits of the study. The procedure has been approved by the ethics committee of the Faculty of Medicine, Universitas Sumatera Utara (No. 327/2017) following the Second Declaration of Helsinki. The study was conducted from July 2017 to June 2018.

Sample collection

Blood sample (5 ml) was collected in plain and EDTA tube from the median cubital vein. The blood sample was centrifuged at 3000 rpm for 10 minutes. The blood glucose level was measured within 2 hours after being taken. The serum was stored at -80°C for further measurement of SOD levels.

DNA was extracted from the whole blood using the genomic DNA extraction kit (Promega, USA). The DNA template was then stored at a temperature of -80°C for the next stage of amputation. All process was carried out at the Integrated Laboratory of the Faculty of Medicine, Universitas Sumatera Utara.

Measurement of Blood Glucose Levels

The blood glucose levels (BGLs) were directly measured by the glucose oxidase-peroxidase (GOD-PAP) enzymatic colourimetric method and read with a spectrophotometer at a wavelength of 500 nm.

Measurement of Superoxide Dismutase (SOD) Levels

The SOD levels were measured using an enzyme-linked immunosorbent assay (ELISA) method with a commercial kit (Lab science, USA). The detection range was 3 to 900 U/L with a sensitivity of 1.52 U/L.

Amplification of SOD Gene

The DNA was amplified with the polymerase chain reaction (PCR) method. The amplification was performed using Forward primer 5'-CAG CCC AGC CTG CGG AGA CGG-3' and Reverse primer 5'-CTT GGC CAA CGC CTC CTG GTA CTT-3'. Before performing the amplification process, the PCR solution (25 µl) was made by mixing master mix (12.5 µl), primers (1 µl each), DNA template (2 µl), and nuclease-free water (8.5 µl) (Promega, USA).

The amplification process started with initial denaturation of DNA at 95°C for 5 minutes, followed by (95°C for 45 s (melting), 54°C for 30 s (annealing), and 72°C for 30 s) for 30 cycles of amplification, and a final extension at 72°C for 5 minutes [18]. PCR products were analyzed on 2% agarose gel electrophoresis and staining with ethidium bromide.

Restriction Fragment Length Polymorphism (RFLP) of SOD gene polymorphism (ala16val)

The PCR reaction mixture (10 µl) was digested using restriction fragment length polymorphism (RFLP) method by the 0.2 µl of restriction endonuclease BsaW1 enzyme at 60°C in 10 minutes. The RFLP products were analysed on 4% agarose gel electrophoresis and staining with ethidium bromide.

Statistical Analysis

Statistical analysis was performed using SPSS version 22. Comparison of the mean of SOD levels in both groups was carried out using the Mann Whitney test. The Fisher's exact test was performed to assess the association of genotype and alleles in SOD gene polymorphism (ala16val) between both groups. In the group of patients, differences of the SOD levels on genotype variants were analysed using the Kruskal Wallis test whereas Hardy-Weinberg equilibrium (HWE) in both groups was analysed using the Chi-Square test.

Results

This study involved 40 tuberculosis patients with diabetes mellitus and 40 healthy subjects. The characteristics of the subject in both groups are shown in Table 1.

Table 1: Characteristics of studied groups

Characteristics	Patient (N = 40)	Healthy subject (N = 40)
Age (years), mean ± SD	53.26 ± 8.77	45.2 ± 10.90
Gender (male/female), N (%)	26 (65.0)/14 (35.0)	21 (52.5)/19 (47.5)
Duration of disease (years) mean ± SD	3.61 ± 1.38	-
Smokers N (%)	18 (45.0)	15 (37.5)
Blood glucose levels ad random (mg/dl) mean ± SD	295.51 ± 57.85	113 ± 19.8

The mean age of subjects in the patient group was 53.26 ± 8.77 years old, whereas the mean of subjects in the healthy group was 45.20 ± 10.90 years old. Based on gender, more male subjects were found than female subjects in the patient group (65% vs 35%). Similarly, there were more male subjects than female subjects in the healthy group (52.5% vs 47.5%). The mean duration of disease for 3.61 ± 1.38 years. 45% of the subjects in the patient group were smokers while 37.5% of the subjects in the healthy group were smokers. The mean BGLs in the patient group was 295.51 ± 57.85 mg/dl compared to 113 ± 19.8 mg/dl in the healthy group.

The mean levels of superoxide dismutase (SOD) both in patients and healthy control groups can be seen in Table 2.

Table 2: The mean levels of SOD in patient and control groups

	Patients group		Control group		p-value
	Mean	SD	Mean	SD	
SOD (U/L)	102.474	36.07	294.543	58.75	0.010

The SOD levels in the patient group were lower than the healthy group (102.474 ± 36.07 vs 294.543 ± 58.75), respectively. The Mann-Whitney test showed a significant difference between both groups ($p < 0.05$).

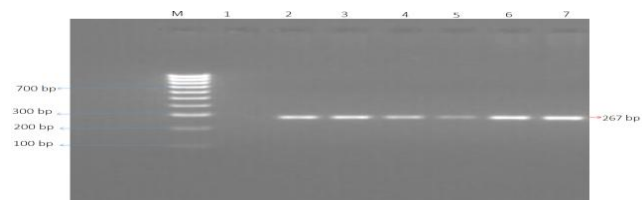


Figure 1: The PCR product of the SOD gene on 2% agarose gel electrophoresis. Lane M: DNA Ladder 100 bp; Lane 1: Negative Control; Lane 2, 3, 4, 5, 6, 7: PCR product of SOD gene at 267 bp

The PCR and the PCR-RFLP product of the SOD gene polymorphism (ala16val) can be seen in Figure 1 and Figure 2.

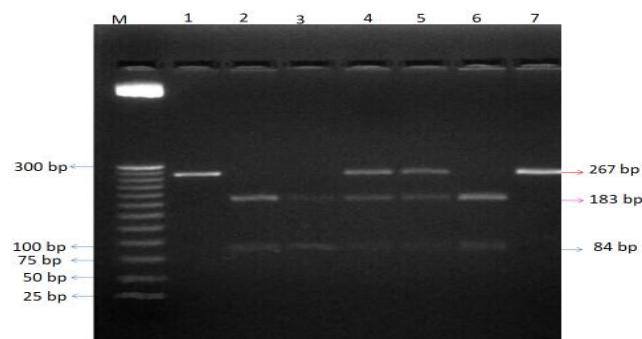


Figure 2: The PCR-RFLP product of the SOD gene Ala16val polymorphism on 4% agarose gel electrophoresis. Lane M: DNA Ladder 25 bp; Lane 1, 7: homozygous Ala/Ala without any cutting of PCR product; Lane 2, 3, 6: homozygous mutant Val/Val had two bands at 184 bp and 84 bp; Lane 4, 5: heterozygous Ala/Val had three bands at 267, 184 bp and 84 bp

The PCR product of the SOD gene was at 267 bp (Figure 1). After the digestion with BsaW1 restriction enzyme, the PCR product showed three different patterns. The ala/ala homozygous wild-type produced a band at 267 bp (without any cutting of PCR product). The ala/Val heterozygous showed three bands at 267 bp, 183 bp, and 84 bp. Whereas, the val/val homozygous mutant had two bands at 183 bp and 84 bp (Figure 2).

Frequencies of genotype and allele of SOD gene polymorphism (ala16val) in patients and healthy control groups can be seen in Table 3.

The ala/ala frequency in the patients and healthy subjects were similar (5%). The ala/val frequency in the healthy group was higher than the patient group, but the val/val frequency in the patient group was higher than the healthy group. However,

there was no statistical difference found in the genotypes and alleles between patients and healthy subjects ($p > 0.05$).

Table 3: Comparison in genotype and allele frequencies of SOD gene Ala16val polymorphism between the patients and healthy

Genotype	Patient (N = 40)	Healthy subject (N = 40)	P
Ala/ala	2 (5%)	2 (5%)	0.863
Ala/val	15 (37.5%)	18 (45%)	
Val/val	23 (57.5%)	20 (50%)	
Allele	Patient	Healthy subject	P
Ala	19 (23.75%)	22 (27.5%)	0.580
Val	61 (76.25%)	58 (72.50%)	

The association between levels of SOD and genotypes of SOD gene polymorphism (ala16val) in tuberculosis patients with diabetes mellitus shows in Table 4.

Table 4: Levels of SOD according to the genotype of SOD gene polymorphism (ala16val) in patients

	Genotype	Mean	SD	P
SOD levels (U/L)	Ala/ala (n = 2)	116.1092	6.68	0.051
	Ala/val (n = 15)	87.3318	12.47	
	Val/val (n = 23)	111.1639	24.20	

The SOD levels in the val/val genotype were lower than the ala/ala wild-type genotype. However, based on the Kruskal Wallis test, the association between genotypes of the SOD gene and SOD levels was not significant ($p > 0.05$).

Discussion

Tuberculosis is an infectious disease caused by *Mycobacterium tuberculosis* (Mtb). The occurrence of oxidative stress in tuberculosis patients will cause an increase in ROS which is formed during the phagocytic actions on Mtb [18]. In metabolic disorders such as diabetes mellitus, the condition of hyperglycemia will trigger oxidative stress [19]. These conditions require antioxidant activities. Antioxidants are compounds which have complex and comprehensive functions against oxidative stress conditions [20].

The body can produce antioxidant compounds named endogenous antioxidants. SOD is one of the most important endogenous antioxidants and classified as the main antioxidant in homotetrameric enzyme group due to the ability in preventing cells from free radicals and oxidative stress [21]. SOD was first identified in 1938 by Mann and Keilin. SOD works as an antioxidant by preventing the initiation stage in the chain reactions of free radicals formation from ROS. SOD enzymes can degrade ROS superoxide anions into oxygen and hydrogen peroxide. However, in the condition of infection and metabolic disorders, the number of ROS significantly

increases, resulting in more NADH and FADH₂ electron donors enter the electron transport chain. The increase of ROS will increase the rate of lipid peroxidation which contributes to the production of free radicals. Oxidative modification, in turn, may inactivate SOD and decrease SOD levels [22], [23].

The present study found that serum superoxide dismutase (SOD) levels of tuberculosis patients with diabetes mellitus were significantly lower than the healthy subjects. Several previous studies have found that SOD levels were significantly lower in tuberculosis patients than the control group. The percentage of SOD inhibition in tuberculosis patients was lower than that of the healthy subjects [3], [4]. Other previous studies also showed that the SOD levels in the group of diabetic patients were lower than the group of healthy subjects [24], [25]. To the best of our knowledge, no study of SOD levels in tuberculosis patients with diabetes mellitus has been reported.

In the present study, the genotype frequency of SOD gene polymorphism (ala16val) in tuberculosis patients with diabetes mellitus and the healthy subjects was also compared. The result showed that val/val genotype as the mutant genotype was higher in the patient group than the healthy subject group although the difference was not statistically significant. This research was the first study which reported this finding. Several previous studies have only investigated the association between SOD gene polymorphisms (ala16val) and diabetes mellitus patients, but not SOD gene polymorphism (ala16val) in tuberculosis patients with diabetes mellitus. Past studies reported that val/val genotype was the most common in diabetic patients, and there was an association between SNP in SOD gene with diabetes mellitus [15], [26], [27].

SOD gene is located at the twenty-five point of the long arm of chromosome six which has five exons and four introns. The expression of SOD gene sequence influences SOD activity. Single nucleotide polymorphism (SNP) (i.e. the substitution of one of the nucleotide base in the SOD gene) contributes to the different expression of SOD. SOD gene polymorphism (ala16val) is a commonly known polymorphism. In this type of polymorphism, a single-nucleotide is substituted from C to T resulting in a change of the amino acid from ala/ala (GCT) to valine/val (GTT) at the 16th residue (ala16val) of the gene sequence. As a result, the SOD gene polymorphism (ala16val) has three genotypes, namely ala/ala genotype as wildtype genotype, and ala/val genotype and val/val genotype as mutant genotypes [13].

It has been reported that val/val genotype is associated with lower SOD activity than the ala/ala genotype. The substitution from ala to val reduces SOD activity and synthesis by 30 – 40% and decreases the transport efficiency of SOD into the mitochondria. This change is considered as an important pathophysiological mechanism that makes

people with val/val genotype have a risk factor for certain type of diseases. Furthermore, the val/val genotype of the SOD gene has been reported to be associated with a lower SOD efficiency against oxidative stress [28].

However, the present study did not find a significant association between the levels of SOD and genotypes of SOD gene polymorphism (ala16val) in tuberculosis patients with diabetes mellitus. Environmental factors such as nutrition intake and lifestyle were not assessed in this study. The activity and level of SOD can be influenced by environmental factors [29]. The SOD levels in this population might be more influenced by environmental factors, so there was no relationship between the level of SOD and the genotypes of SOD gene polymorphism (ala16val).

The other possibility of this finding might be due to the relatively small number of samples.

The distribution of SOD gene polymorphism (ala16val) in both groups was compared according to the Hardy – Weinberg Equilibrium (HWE) using the chi-square goodness-of-fit test. The results showed that SOD gene polymorphisms (ala16val) fulfilled the HWE. As the large population in Medan city is dominated by migrants, people commonly practice cross-ethnicity marriage. This condition results in a consistency of Hardy-Weinberg law in the population [30].

The present study also found that men were more likely to suffer from DM than women. This finding is consistent with a study in North India and North-west Nigeria [31]. Although gender is not a risk factor for infectious diseases including tuberculosis infection, it may be a risk factor for DM [32], [33].

In the present study, there was an association between SOD levels and tuberculosis patients with diabetes mellitus, but not for SOD gene polymorphism (ala16val). Moreover, SOD levels were not associated with val/val genotype in SOD gene polymorphism (ala16val) in the group of tuberculosis patients with diabetes mellitus in Medan city. These findings suggest that SOD gene polymorphism (ala16val) is not an important factor in influencing SOD levels in tuberculosis patients with diabetes mellitus in Medan city. Further study should be conducted using a large sample size, and the environmental factors of the research subjects should be analyzed.

Acknowledgements

The authors would like to thank all the research subjects who have participated in this study.

References

- World Health Organization. Global Tuberculosis Report 2012. France: World Health Organization, 2012.
- Cooper AM. Cell-mediated immune responses in tuberculosis. *Annu Rev Immunol.* 2009; 27:393-422. <https://doi.org/10.1146/annurev.immunol.021908.132703> PMID:19302046 PMCID:PMC4298253
- Dalvi SM, Patil VW, Ramraje NN, Phadtare JM. Lipid peroxidation, Superoxide dismutase and catalase co-relation in pulmonary and extra pulmonary tuberculosis. *Free Radicals Antioxidants.* 2012; 2(4):1–5. <https://doi.org/10.5530/ax.2012.4.1>
- Hashmi MA, Ahsan B, Shah SIA, and Khan MIU. Antioxidant Capacity and Lipid Peroxidation Product in Pulmonary Tuberculosis. *Al Ameen J Med Sci.* 2012; 5(3):313-319.
- Dooley KE, Chaisson RE. Tuberculosis and diabetes mellitus: convergence of two epidemics. *Lancet Infect Dis.* 2009; 9(12):737-46. [https://doi.org/10.1016/S1473-3099\(09\)70282-8](https://doi.org/10.1016/S1473-3099(09)70282-8)
- World Health Organization. A collaborative framework for care and control of Tuberculosis and diabetes, 2011.
- Baghaei P, Marjani M, Javanmard P, Tabarsi P, Masjedi MR. Diabetes mellitus and tuberculosis facts and controversies. *J Diabetes Metab Disord.* 2013; 20:12(1):58.
- Tangvarasittichai S. Oxidative stress, insulin resistance, dyslipidemia and type 2 diabetes mellitus. *World J Diabetes.* 2015; 6(3):456-80. <https://doi.org/10.4239/wid.v6.i3.456> PMID:25897356 PMCID:PMC4398902
- Sari MI, Ilyas S, Widyawati T, Antika MA. Effect of lawsonia innermis (linn) leaves ethanolic extract on blood glucose and malondialdehyde level in alloxan-induced diabetic rats. *IOP Conf Ser Earth Environ Sci.* 2018; 130(1). <https://doi.org/10.1088/1755-1315/130/1/012034>
- Matough FA, Budin SB, Hamid ZA, Alwahaibi N, Mohamed J. The role of oxidative stress and antioxidants in diabetic complications. *SQU Med J.* 2012; 12(February):5–18.
- Ganjifrockwala FA, Joseph JT, George G. Decreased total antioxidant levels and increased oxidative stress in South African type 2 diabetes mellitus patients. *J Endocrinol Metab Diabetes South Africa.* 2017; 22(2):21–5. <https://doi.org/10.1080/16089677.2017.1324590>
- Ezeiruaku FC, Michael KC. Extracellular Superoxide Dismutase (EC-SOD) Evaluation in Type 1 and 2 Diabetes Mellitus Subjects in Yenagoa, Bayelsa State, Nigeria. 2015; 5(22)
- Zelko IN, Mariani TJ, Folz RJ. Superoxide dismutase multigene family: a comparison of the CuZn-SOD (SOD1), Mn-SOD (SOD2), and EC-SOD (SOD3) gene structures, evolution, and expression. *Free Radical Biology and Medicine.* 2002; 33(3):337-349. [https://doi.org/10.1016/S0891-5849\(02\)00905-X](https://doi.org/10.1016/S0891-5849(02)00905-X)
- Pourvali K, Abbasi M, Mottaghi A. Role of Superoxide Dismutase 2 Gene Ala16Val Polymorphism and Total Antioxidant Capacity in Diabetes and its Complications. *Avicenna J Med Biotechnol.* 2016; 8(2):48-56. PMID:27141263 PMCID:PMC4842242
- Flekcac M, Skrha J, Hilgertova J, Lacinova Z, Jarolimkova M. Gene polymorphisms of superoxide dismutases and catalase in diabetes mellitus. *BMC Med Genet.* 2008; 9:30. <https://doi.org/10.1186/1471-2350-9-30> PMID:18423055 PMCID:PMC2386118
- Perhimpunan Dokter Paru Indonesia. Tuberculosis: Pedoman diagnosis dan penatalaksanaan di Indonesia. Jakarta: Indah Offset Citra Grafika, 2011.
- Perkumpulan Endokrinologi Indonesia. Konsensus Pengendalian dan Pencegahan Diabetes Melitus Tipe 2 di Indonesia, 2015:78. Available at: <http://pbperkeni.or.id/doc/konsensus.pdf>
- Jack CIA, Jackson MJ, Hind CR. Circulating markers of free

- radical activity in patients with pulmonary tuberculosis. *Tubercle and lung disease*. 1994; 75(2):132-7.
19. Tiwari BK, Pandey KB, Abidi AB, Rizvi SI. Markers of oxidative stress during diabetes mellitus. *Journal of biomarkers*. 2013; 2013.
20. Rodwell VW, Bender DA, Bitham KM, Kennelly PJ, Weil PA. Harper's Illustrated Biochemistry 31st Edition. Mcgraw-Hill Medical, 2015:693.
21. Desideri A, Falconi M. Prokaryotic Cu, Zn superoxide dismutases. *Biochem Soc Trans*. 2003; 31(Pt 6):1322-5. <https://doi.org/10.1042/bst0311322> PMID:14641054
22. Lee MH, Park JW. Lipid peroxidation products mediate damage of superoxide dismutase. *Biochem Mol Biol Int*. 1995; 35(5):1093–102. PMID:7549928
23. Bresciani G, da Cruz IB, González-Gallego J. Manganese superoxide dismutase and oxidative stress modulation. *Adv Clin Chem*. 2015; 68:87-130. <https://doi.org/10.1016/bs.acc.2014.11.001> PMID:25858870
24. Holy B and Ngoye BO. Clinical Relevance of Superoxide Dismutase and Glutathione Peroxidase Levels in Management of Diabetes Type2. *International Journal of Contemporary Medical Research*. 2016; 3(5).
25. Shenoy SM, Devi UH, Kumari SN, Subramanya C. A study on Association of Antioxidant Status of Red Blood Cells with Type 2 Diabetes. *Journal of Clinical and Diagnostic Research*. 2018; 12(8): BC16-BC18. <https://doi.org/10.7860/JCDR/2018/36006.11920>
26. Zahreddine AM, Moustafa ME, Chamieh HA. Susceptibility of Patients with Manganese Superoxide Dismutase Ala16Val Genetic Polymorphism to Type 2 Diabetes Mellitus and its Complications in a Sample of Lebanese Population. *J Genet Genome Res*. 2016; 3(1):3–6. <https://doi.org/10.23937/2378-3648/1410024>
27. Nakanishi S, Yamane K, Ohishi W, Nakashima R, Yoneda M, Nojima H, et al. Manganese superoxide dismutase Ala16Val polymorphism is associated with the development of type 2 diabetes in Japanese-Americans. *Diabetes Res Clin Pract*. 2008; 81(3):381–5. <https://doi.org/10.1016/j.diabres.2008.06.003> PMID:18653258
28. Sutton A, Khoury H, Prip-Buus C, Capanec C, Pessayre D, Degoul F. The Ala16Val genetic dimorphism modulates the import of human manganese superoxide dismutase into rat liver mitochondria. *Pharmacogenetics*. 2003; 13(3):145–57. <https://doi.org/10.1097/00008571-200303000-00004> PMID:12618592
29. Bresciani G, Cruz IBM, De Paz JA, Cuevas MJ, González-Gallego J. The MnSOD Ala16Val SNP: Relevance to human diseases and interaction with environmental factors. *Free Radic Res*. 2013; 47(10):781–92. <https://doi.org/10.3109/10715762.2013.836275> PMID:23952573
30. Andrews, C. The Hardy-Weinberg Principle. *Nature Education Knowledge*. 2010; 3(10):65
31. Waziri NE, Cadmus S, Nguku P, Fawole O, Owolodun OA, Waziri H, et al. Factors associated with tuberculosis among patients attending a treatment centre in Zaria, North-west Nigeria 2010. *Pan Afr Med J*. 2014; 18(Supp 1):5.
32. Powers AC. Diabetes mellitus, In: Harrison's principles of internal medicine. Kasper DL, Fauci AS, Longo DL, Braunwald E, Hauser SL, Jameson JL, Loscalzo J. Eds. 17th edition. McGraw-Hill, New York. 2008:2275-2279.
33. Al-Mukhtar SB, Fadhil NN, Hanna BE. General and Gender Characteristics of Type 2 Diabetes Mellitus Among the Younger and Older Age Groups. *Oman Medical Journal* 2012; 27(5): 375-382. <https://doi.org/10.5001/omj.2012.94> PMID:23074547 PMID:PMC3472577