



Contents lists available at ScienceDirect

Journal of Ginseng Research

journal homepage: www.sciencedirect.com/journal/journal-of-ginseng-research



Corrigendum

Corrigendum to “Ginsenoside Ro, an oleanolic saponin of *Panax ginseng*, exerts anti-inflammatory effect by direct inhibiting toll like receptor 4 signaling pathway” [J Ginseng Res 46 (2022) 156–166]



Hong-Lin Xu ^a, Guang-Hong Chen ^a, Yu-Ting Wu ^a, Ling-Peng Xie ^a, Zhang-Bin Tan ^{a, b}, Bin Liu ^{a, b}, Hui-Jie Fan ^{a, c}, Hong-Mei Chen ^a, Gui-Qiong Huang ^d, Min Liu ^{e, **}, Ying-Chun Zhou ^{a, *}

^a School of Traditional Chinese Medicine, Department of Traditional Chinese Medicine, Nanfang Hospital (ZengCheng Branch), Southern Medical University, Guangzhou, China

^b Department of Traditional Chinese Medicine, The Second Affiliated Hospital of Guangzhou Medical University, Guangzhou, China

^c Department of Traditional Chinese Medicine, The First Hospital of Yangjiang, Yangjiang, China

^d Department of Internal Medicine, Huizhou Hospital of Guangzhou University of Traditional Chinese Medicine, Huizhou, China

^e Department of Pathogen Biology, Guangdong Provincial Key Laboratory of Tropical Disease Research, School of Public Health, Southern Medical University, Guangzhou, China

The authors regret that the unit of LPS, *P. ginseng*, DEX, and GRo in the figures of animal experiments were mistakenly marked in the original publication. We noticed the inadvertent copy-paste error occurred during figures preparation, and mislabeled mg/kg as mg/ml (highlighted by red). The corrected unit in Figs. 1B–J, 2B–C and G–H, 4H and J–Q, 5A–D, Supplementary Figs. S2A–B and E–F are shown below.

DOI of original article: <https://doi.org/10.1016/j.jgr.2021.05.011>.

Abbreviations: LPS, lipopolysaccharide; *P. ginseng*, *Panax ginseng* Meyer; DEX, Dexamethasone; GRo, ginsenoside Ro.

* Corresponding author. School of Traditional Chinese Medicine, Department of Traditional Chinese Medicine, Nanfang Hospital (ZengCheng Branch), Southern Medical University, Guangzhou, 510515, China.

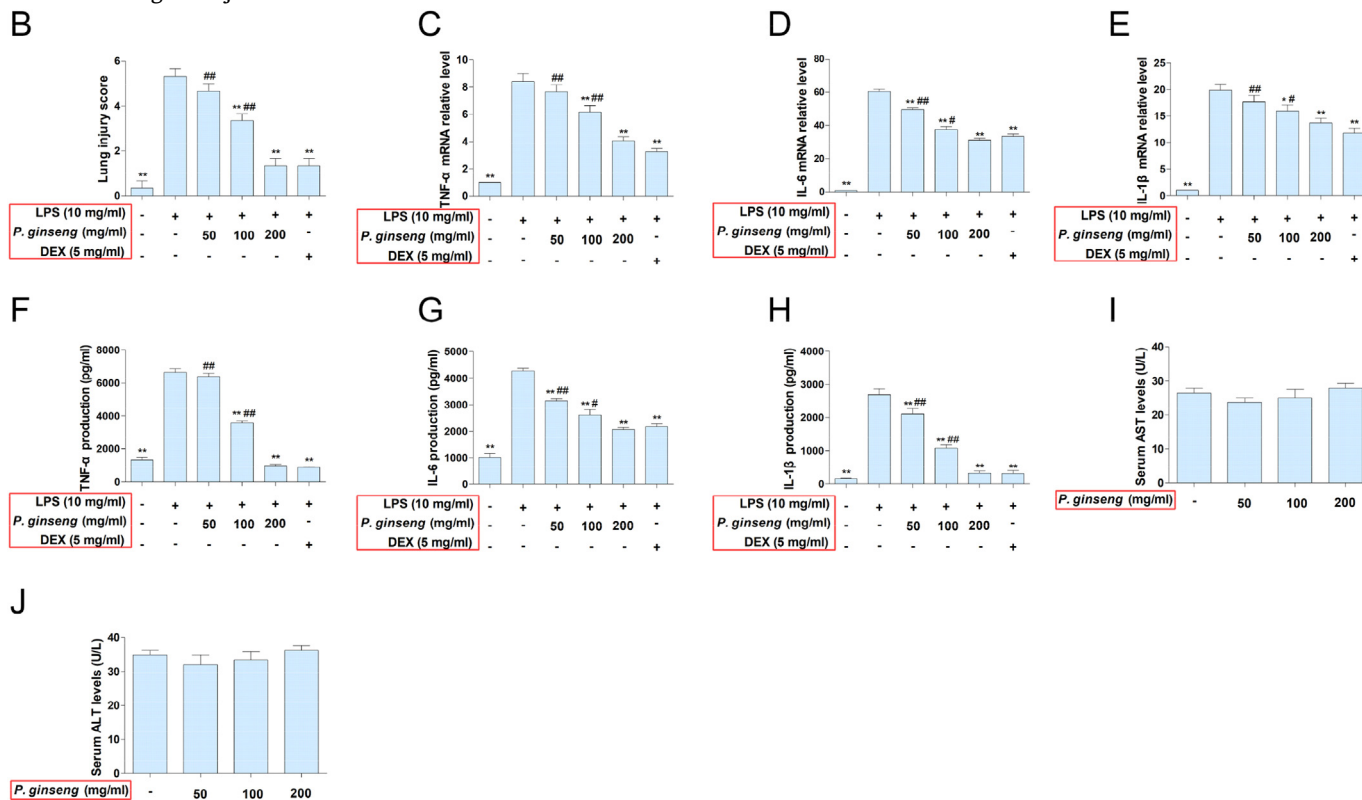
** Corresponding author. Department of Pathogen Biology, Guangdong Provincial Key Laboratory of Tropical Disease Research, School of Public Health, Southern Medical University, Guangzhou, 510515, China.

E-mail addresses: ichbinlm@163.com (M. Liu), zhychun@126.com (Y.-C. Zhou).

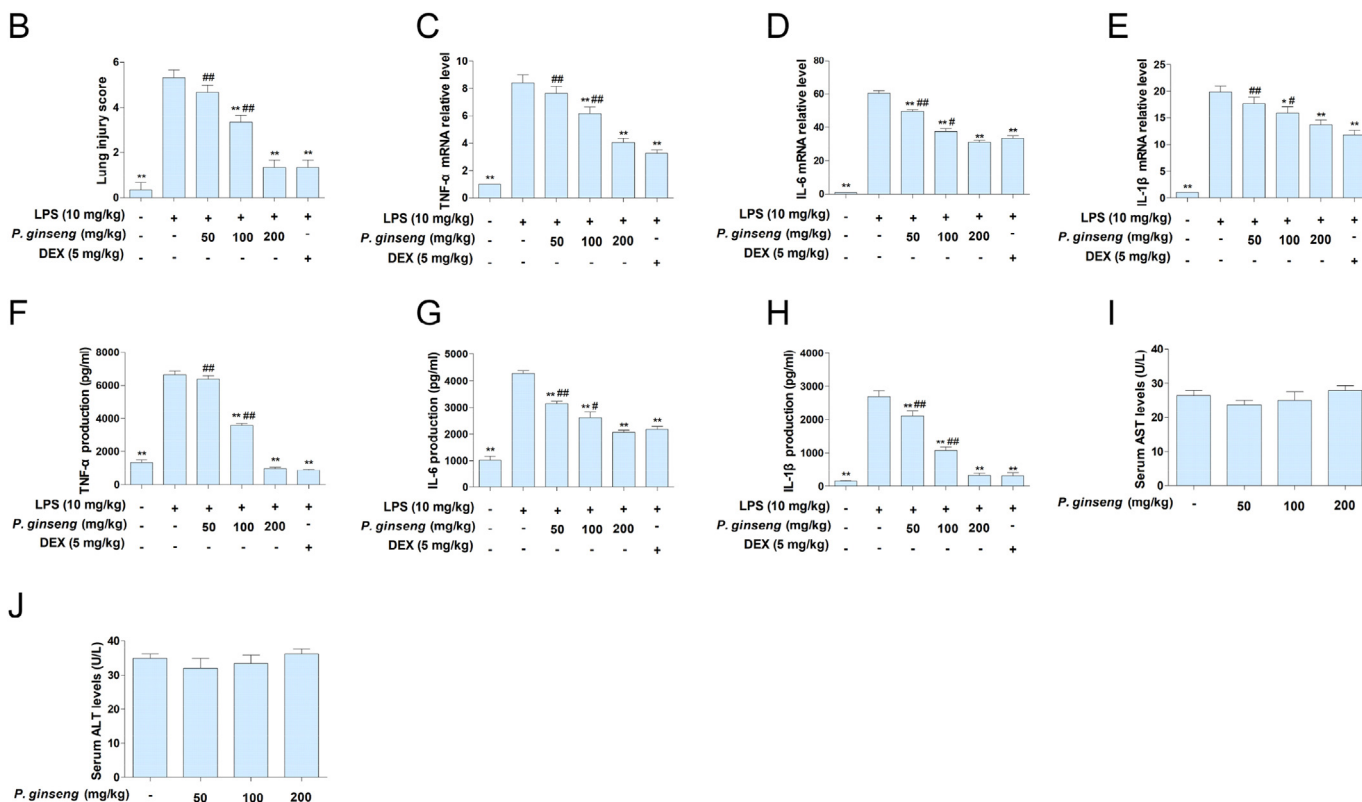
<https://doi.org/10.1016/j.jgr.2022.02.007>

1226-8453/© 2022 The Korean Society of Ginseng. Publishing services by Elsevier B.V. This is an open access article under the CC BY-NC-ND license (<http://creativecommons.org/licenses/by-nc-nd/4.0/>).

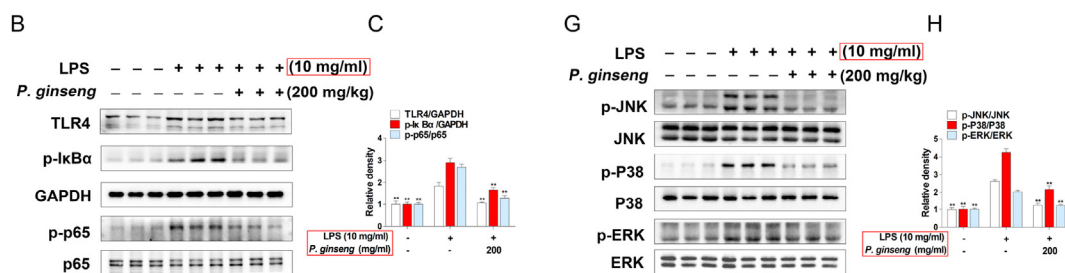
Published Figs. 1B–J.



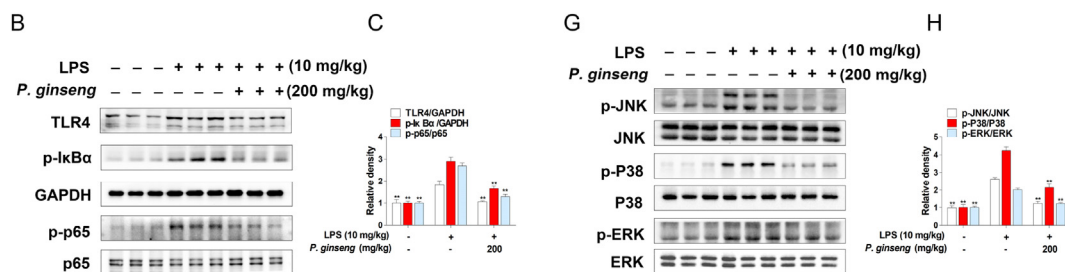
Corrected Figs. 1B–J.



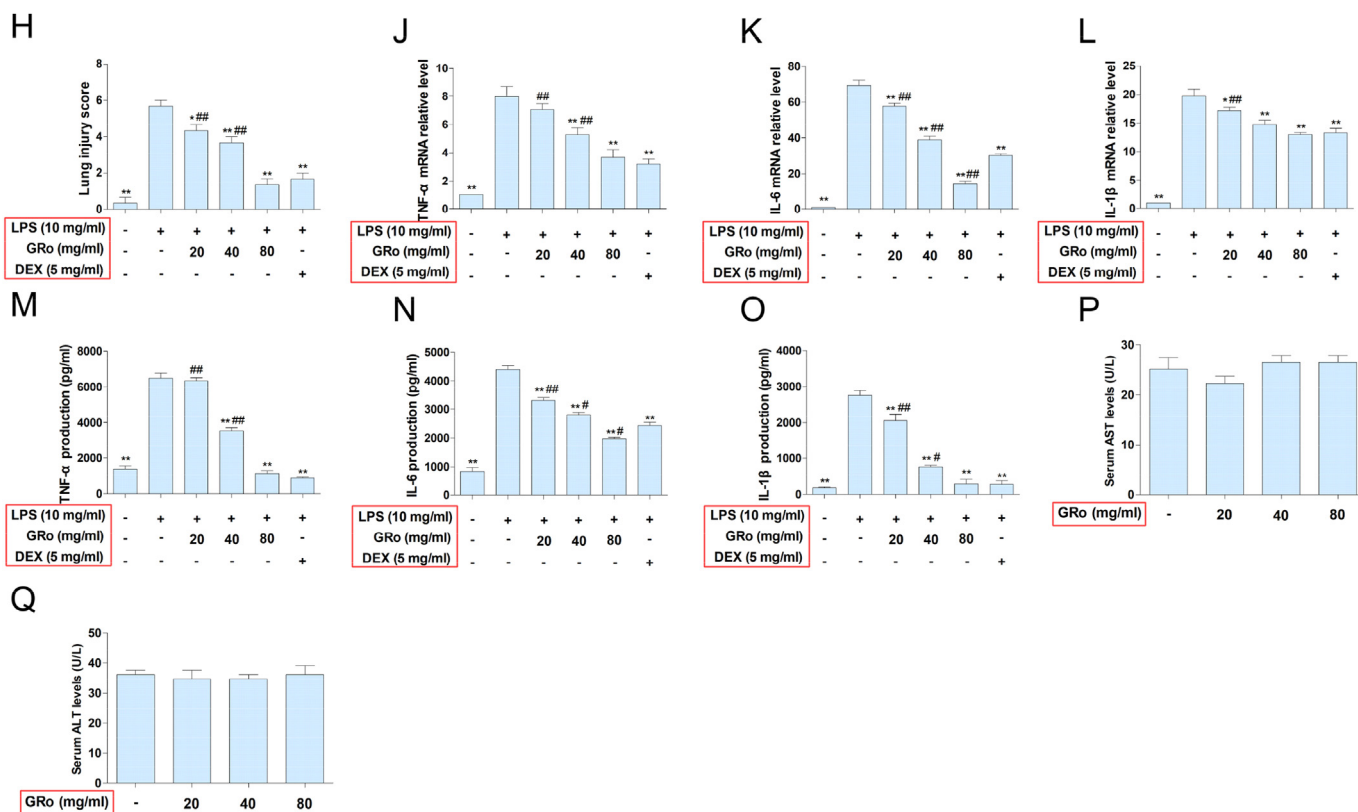
Published Figs. 2B–C and G–H.



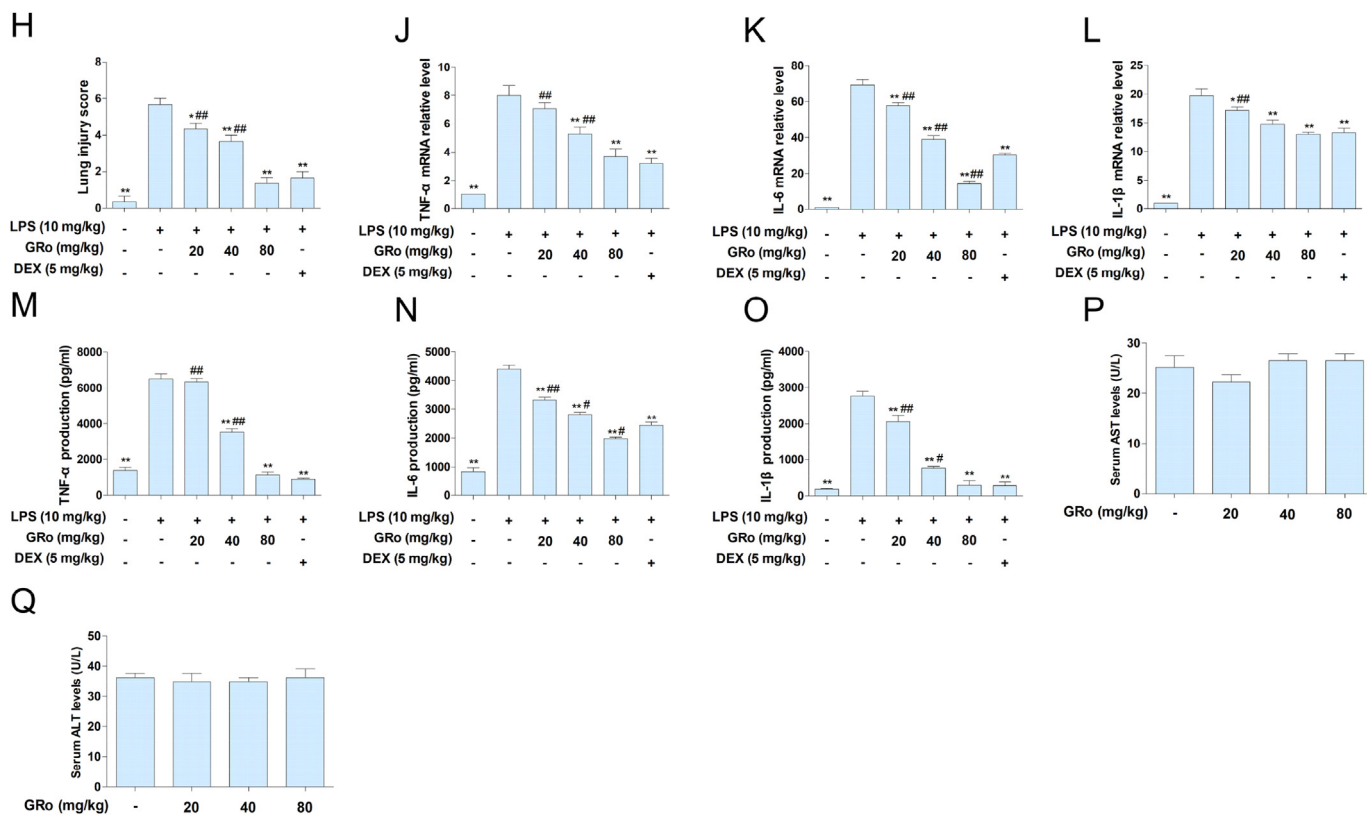
Corrected Figs. 2B–C and G–H.



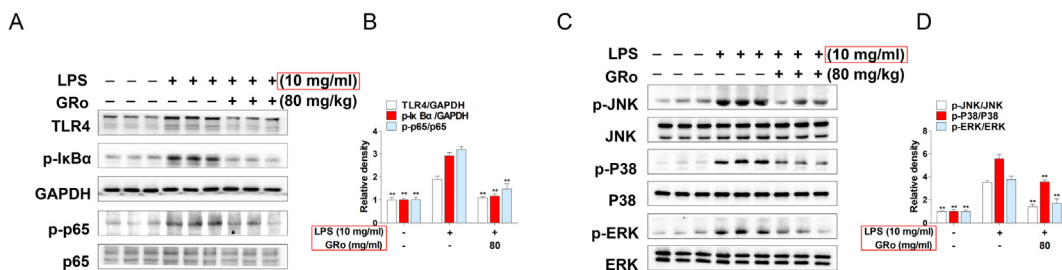
Published Figs. 4H and J–Q.



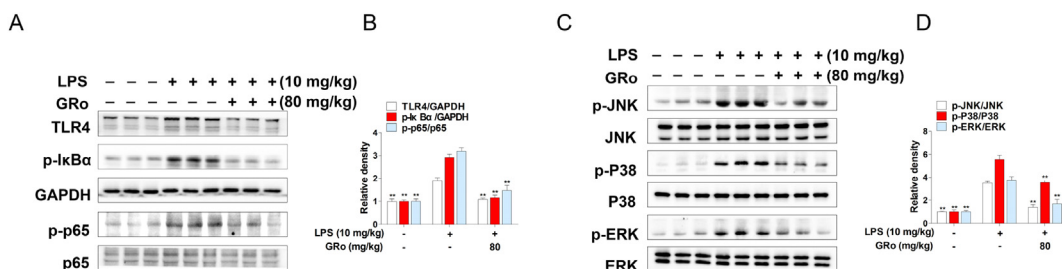
Corrected Figs. 4H and J-Q.



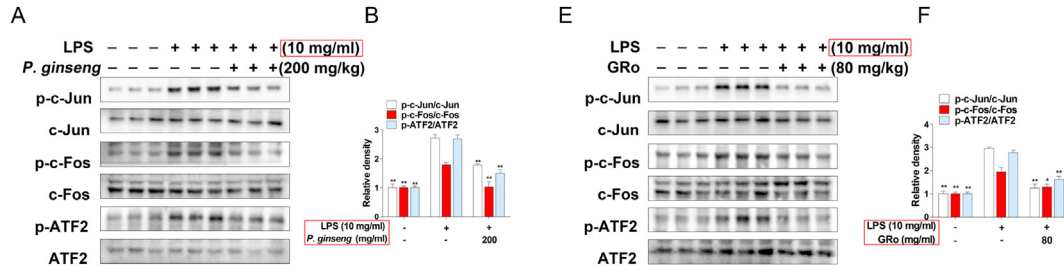
Published Figs. 5A–D.



Corrected Figs. 5A–D.



Published Supplementary Figs. S2A-B and E-F.



Corrected Supplementary Figs. S2A-B and E-F.

