

RESEARCH

Open Access



Antimicrobial prophylaxis administration after umbilical cord clamping in cesarean section and the risk of surgical site infection: a cohort study with 55,901 patients

Rami Sommerstein^{1,2*} , Jonas Marschall^{1,2}, Andrew Atkinson¹, Daniel Surbek^{3,4}, Maria Gloria Dominguez-Bello⁵, Nicolas Troillet^{2,6} and Andreas F. Widmer^{2,7*} Swissnoso

Abstract

Background: The World Health Organization (WHO) recommends administration of surgical antimicrobial prophylaxis (SAP) in cesarean section prior to incision to prevent surgical site infections (SSI). This study aimed to determine whether SAP administration following cord clamping confers an increased SSI risk to the mother.

Methods: Study design: Cohort. Setting: 75 participating Swiss hospitals, from 2009 to 2018. Participants: A total of 55,901 patients were analyzed. Main outcome measures: We assessed the association between SAP administration relative to incision and clamping and the SSI rate, using generalized linear multilevel models, adjusted for patient characteristics, procedural variables, and health-care system factors.

Results: SAP was administered before incision in 26,405 patients (47.2%) and after clamping in 29,496 patients (52.8%). Overall 846 SSIs were documented, of which 379 (1.6% [95% CI, 1.4–1.8%]) occurred before incision and 449 (1.7% [1.5–1.9%]) after clamping ($p = 0.759$). The adjusted odds ratio for SAP administration after clamping was not significantly associated with an increased SSI rate (1.14, 95% CI 0.96–1.36; $p = 0.144$) when compared to before incision. Supplementary and subgroup analyses supported these main results.

Conclusions: This study did not confirm an increased SSI risk for the mother in cesarean section if SAP is given after umbilical cord clamping compared to before incision.

Keywords: Cesarean section, Microbiome, Modelling, Obstetrics, Surgical antimicrobial prophylaxis, Surgical site infection

Manuscript at a glance

Why was this study conducted? This study is by far the largest study to assess the association between timing of surgical antimicrobial prophylaxis relative to cord

clamping and surgical site infection in cesarean section patients.

What are the key findings? We were able to demonstrate that the surgical site infection rate is not higher if the prophylaxis is administered after cord clamping. The same surveillance method was used over many years. The drop-out rate was low and the quality of the data very high due to a rigorous validation system.

*Correspondence: rami.sommerstein@extern.insel.ch; andreas.widmer@usb.ch

¹ Department of Infectious Diseases, Bern University Hospital, University of Bern, Freiburgstrasse, 3010 Bern, Switzerland

⁷ Department of Infectious Diseases, University Hospital Basel, Basel, Switzerland

Full list of author information is available at the end of the article



© The Author(s) 2020. **Open Access** This article is licensed under a Creative Commons Attribution 4.0 International License, which permits use, sharing, adaptation, distribution and reproduction in any medium or format, as long as you give appropriate credit to the original author(s) and the source, provide a link to the Creative Commons licence, and indicate if changes were made. The images or other third party material in this article are included in the article's Creative Commons licence, unless indicated otherwise in a credit line to the material. If material is not included in the article's Creative Commons licence and your intended use is not permitted by statutory regulation or exceeds the permitted use, you will need to obtain permission directly from the copyright holder. To view a copy of this licence, visit <http://creativecommons.org/licenses/by/4.0/>. The Creative Commons Public Domain Dedication waiver (<http://creativecommons.org/publicdomain/zero/1.0/>) applies to the data made available in this article, unless otherwise stated in a credit line to the data.

What does this study add to what is already known?

The results of this large prospective study provide evidence that the risk of surgical site infection for the mother in cesarean section is not increased if antimicrobial prophylaxis is given after umbilical cord clamping. This could be beneficial for the neonate's developing microbiome.

Introduction

Surgical antimicrobial prophylaxis (SAP) for cesarean section provides a 60–70% reduction in postpartum endometritis and a 30–65% reduction in wound infections in women who undergo either elective or emergent cesarean delivery [1, 2]. The practice of administration of antimicrobials in cesarean delivery after umbilical cord clamping was common until 2013 [3]. The principal reasons were to avoid exposure to betalactam antibiotics that interfere with Vitamin K, in particular moxalactam, leading to serious bleeding [4], and to not expose the newborn to other potential side effects of antibiotics so early in life.

In addition, antimicrobials could theoretically promote the selection of resistant organisms and potentially mask neonatal infection, complicating evaluation for neonatal sepsis [3]. Microbiome building is important for the children's development. It is modulated and shaped by antibiotic treatment, the birth delivery mode and breastfeeding [5–9]. One example is the strong association between childhood antibiotic exposure and incidence of Crohn's disease [10].

The results of four meta-analyses concluded that administration of SAP before surgical incision significantly reduces the risk of surgical site infection (SSI), leading to a change in the previous policy [11–14]. The latest systematic review including 6250 women with SAP after clamping versus administration prior to incision reported a 38% risk reduction of SSI [14]. Therefore, current WHO recommendations support the administration of pre-incisional SAP for cesarean section procedures [15], based in part on a Cochrane review published in 2014 [2]. Switzerland, as many other countries, changed its guidelines following the publication of evidence mentioned above, and therefore obstetricians started to increasingly administer SAP before clamping around the year 2012 [16, 17]. However, the review had limitations as it included studies from low-income as well as high-income countries and did not exclude patients with pre-existing infections [14]. Also, the absolute reduction in events of the composite infectious morbidity was low.

Recent data, including a large randomized trial, from general and cardiac surgery showed that administration of SAP very close to incision was not associated with an increased risk of SSI [18, 19]. The time interval between

incision and cord clamping is around 2–8 min [20], a very short period to assume a huge difference in the risk of SSI between the two strategies.

In view of this, our aim was to estimate the additional risk for SSI, if SAP is given before incision versus after umbilical clamping in a large cohort. We used data generated from the Swiss SSI surveillance program, which includes on-site quality visits, uses standardized infection definitions, and is validated by board certified infectious diseases physicians [21, 22].

Patients and methods

Study design and setting

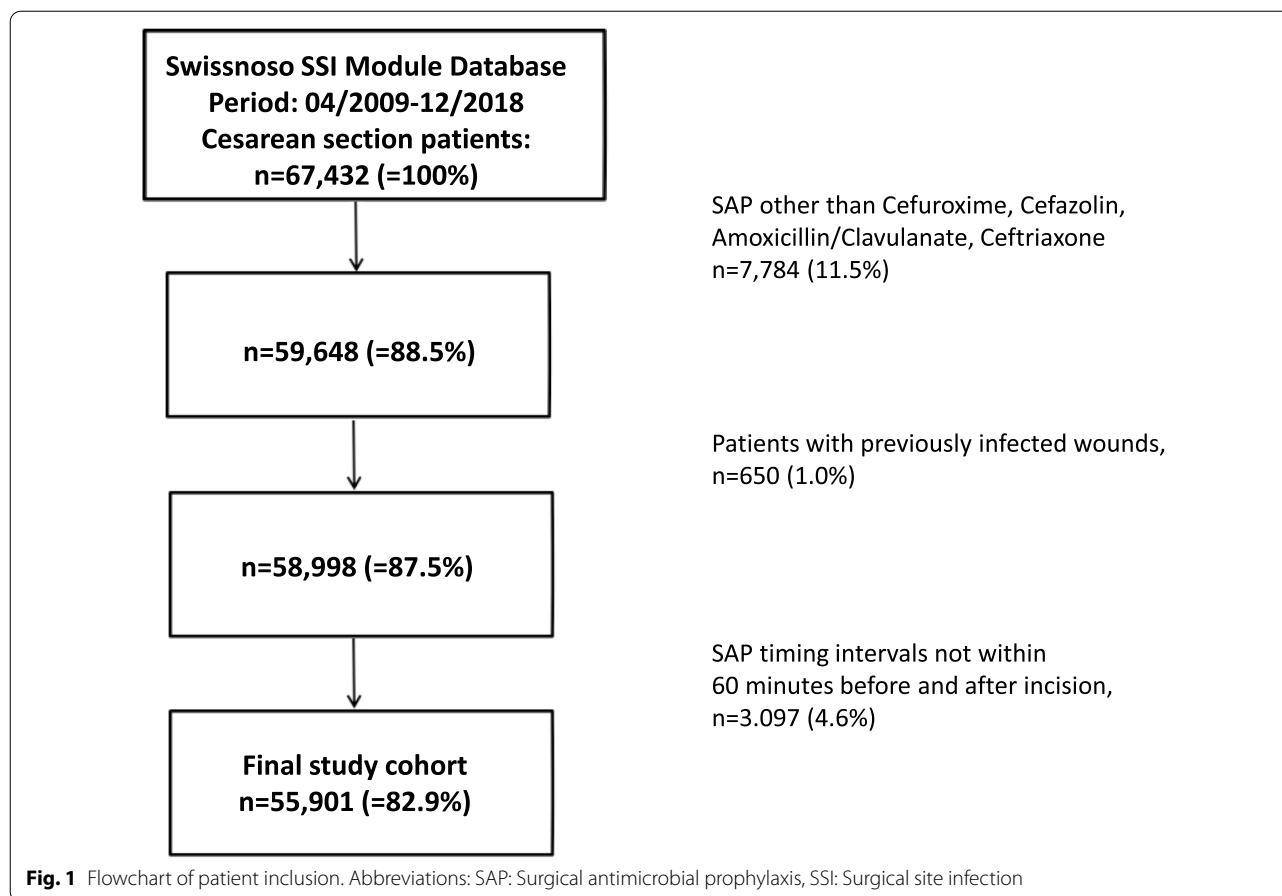
This is a multicenter analytic study of prospectively collected data from the Swiss national SSI surveillance program [22]. We included data from 75 healthcare institutions in Switzerland between April 2009 and December 2018. Each participating hospital records surveillance data on three different intervention types during a selected period, and then includes all consecutive patients. The surveillance includes data collection at discharge as well as rigorous post-discharge surveillance 30 days after the intervention with additional chart review in case of suspected infection. All patients were contacted at least five times by employees from infection control before being considered "lost to follow-up". Follow-up of routine post-discharge surveillance was >89%. Staff members of the surveillance team periodically performed on-site audits to check data quality, as published elsewhere [21, 22]. Data were finally entered in the national database.

Participants

Inclusion criteria was participation in the surveillance program and undergoing cesarean section between 2009 and 2018. Exclusion criteria were patients with preexisting maternal infections, if SAP was not applied within 60 min before/after incision, or if the single SAP agent was not cefuroxime, cefazolin, amoxicillin/clavulanate, or ceftriaxone. (Fig. 1).

Variables, outcomes, and data sources

The primary outcome was SSI (wound infection and/or postpartum endometritis), stratified for SAP administration before incision or after clamping. Co-variables included age, Body mass index (BMI), American Society of Anesthesiologists (ASA) score, wound contamination class: clean-contaminated (standard for cesarean section) vs. contaminated (preterm rupture of the membrane without maternal signs of infection), year of surgery, SAP agent, emergent procedure, operation duration, hospital, and hospital bed-size. Minutes between SAP administration and incision were summarized by SAP



administration groups. The decision of SAP administration before incision/after clamping was in most cases decided at the level of the institution. In some institutions, however, this was also a gynecologist's decision. We accounted for these factors, by adjusting for center (clustering) and hospital size.

SSI cases were defined as patients with SSI according to Centers for Disease Control and Prevention (CDC) definitions [23]. (<https://www.swissnoso.ch/module/ssi-surveillance/ueber-ssi-surveillance/das-modul/>). Infection control specialists reviewed all patient data, and those patients with a suspected SSI were crosschecked by a dedicated physician. All supervising physicians—the majority board-certified in infectious diseases - had attended a training course on SSI surveillance.

Data were electronically entered into a centralized database. Type of SSI—superficial incisional, deep incisional or endometritis was recorded, as well as the pathogen (if available): Up to three different pathogens could be entered for each SSI. Clinicians were asked to enter the main causative pathogen as “first” pathogen, in cases where multiple organisms were identified. The data source for the variables was the *Swissnoso* SSI

surveillance program. Primary data was obtained from the patient charts and telephone interviews with patients.

To analyze the influence of preoperative comorbidity, ASA scores were grouped into 1, 2, and high score (3–5). Age was grouped into <30, 30–40, and >40 years. Regarding bed size, hospitals were grouped into <200 beds, 200–500 beds and >500 beds.

Data reporting

According to current *Swissnoso* data regulations, the primary data cannot be made available in a public registry [24].

Statistical analysis

To investigate differences in terms of baseline characteristics for those with SAP before incision and after clamping we used the χ^2 or Wilcoxon tests. Unadjusted general additive models (GAM) were used to visualize the SSI rate relative to timing of surgical incision using the *mgcv* package / *gam* function in R [25]. To determine the effect of SAP administration before/after clamping on SSIs, covariate adjusted multilevel logistic regression models

clustering at the hospital level (random intercept) were fitted.

Two supplementary analyses were performed: for timing, periods relative to incision were grouped into different SAP timing windows (−60 to −30, −29 to −20, −19 to −10 [reference, as most SAP administrations before incisions were performed in this window], −9 to incision; incision to 9, 10 to 20, 20 to 30, and 30 to 60). Secondary endpoints were the SSI outcomes superficial wound infections and deep infections (including deep wound infections and/or endometritis).

Several subgroup analyses were performed: First, two subgroup analyses were performed to ensure that administration of SAP after incision actually corresponded to administration after clamping, i.e., within 2–8 min [20]: For this reason, we first excluded cases with SAP administration in the 10 min after incision. The second subgroup excluded hospitals with variable SAP administrations before/after clamping. For this reason, SAP administration of every single institution reporting their data was screened. If >90% of SAP administrations were performed either before or after incision, it was assumed that the institutions administered SAP consistently in the respective way and the cases were included in the subgroup analysis. Further subgroup analyses excluded patients with no information on BMI, as this variable was not mandatory and was collected in only 40% of all patients.

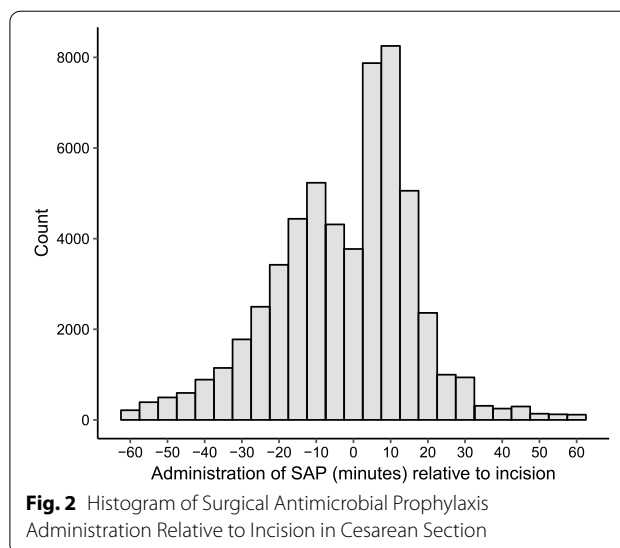
Missing data (including loss of follow-up) was investigated by multiply imputing data assuming missingness was at random, using the *MICE* package in R [26].

A p -value <0.05 was considered statistically significant throughout. All statistics and plots were created in R [25].

Results

Out of a total of 67,432 patients, 55,901 (82.9%) fulfilled the inclusion criteria (Fig. 1). SAP was administered before incision in 26,405 patients (47.2%) and after incision in 29,496 patients (52.8%). The histogram of SAP timing relative to incision demonstrates that peak administration after incision is slightly delayed, compatible with administration after clamping (Fig. 2) and reflecting the time interval between incision and cord clamping, which usually is well below 10 min [20]. The median age of the participants was 33 years [IQR 29–36] and in 21.8% the wound class was considered contaminated. Certain differences in baseline variables were observed between the groups (Table 1). After 2014, more patients received SAP before incision, whereas large hospitals (>500 beds) and ceftriaxone as SAP agent were more frequent in the after clamping group.

Overall, 846 SSIs were found. The majority (550, 65.0%) were superficial wound infections, followed by organ



space infections (endometritis; 226, 26.7%) and deep wound infections (70, 8.3%). 379 (1.6%) of patients with SAP before the incision had SSI, compared to 449 (1.7%) of patients with SAP after clamping ($p=0.759$).

There were no differences in the SSI rates between the two groups, stratified for the depth of infection (Additional file 1: Table 1).

The visual results from fitting an unadjusted GAM showed that SSI risk was stable between −40 min to 15 min after the incision. Between −60 to −40 min, as well as between 15 and 60 min relative to incision, the results suggest non-significant oscillation of the SSI risk (Fig. 3) and crude SSI rates for time windows were comparable.

In the adjusted multilevel model SAP administration after clamping was not significantly associated with an increased SSI rate (OR 1.14, 95% CI 0.96–1.36; $p=0.144$). Co-variables independently associated with an increased risk of a SSI were contaminated wound class (OR 1.27, 95% CI 1.07–1.50; $p=0.005$), ASA score of 2 (compared to ASA score of 1; OR 1.22, 95% CI 1.00–1.48 $p=0.046$), and increasing procedure duration (per 30 min; OR 1.33, 95% CI 1.19–1.49; $p<0.001$).

Age between 30 and 40 years (compared to <30 years; OR 0.76, 95% CI 0.66–0.88; $p<0.001$), and elective (vs. emergent) surgery (OR 0.57, 95% CI 0.49–0.68; $p<0.001$) were associated with a decreased SSI risk (Table 2).

In the analysis of the 19,923 patients in which data on BMI was recorded and all further variables were available, the results were comparable with the main results and the proportion of SSI was similar at 1.85% (95% CI, 1.67–2.05). However, increasing BMI was significantly associated with SSI risk ($p<0.001$; Additional file 1: Table 2).

Table 1 Baseline and Procedural Characteristics, by Surgical Antimicrobial Prophylaxis Administration (Before Incision / After Cord Clamping)

	Before incision	After cord clamping	p
n	26,405	29,496	
Age (%)			0.043
< 30 years	7891 (29.9)	8902 (30.2)	
30–40 years	16,631 (63.0)	18,346 (62.2)	
> 40 years	1883 (7.1)	2248 (7.6)	
BMI in kg/m ² , median [IQR] ^a	28.0 [25.2, 31.6]	27.3 [24.2, 30.9]	< 0.001
SAP agent (%)			< 0.001
Amoxicillin + Clavulanate	3601 (13.6)	1770 (6.0)	
Cefazolin	9081 (34.4)	9073 (30.8)	
Ceftriaxone	782 (3.0)	5117 (17.3)	
Cefuroxime	12,941 (49.0)	13,536 (45.9)	
Minutes between SAP administration and incision	−15 [−25, −9]	10 [5, 15]	< 0.001
Elective surgery = yes (%)	13,458 (51.0)	14,820 (50.2)	0.089
ASA Score (%)			< 0.001
ASA 1	4427 (16.8)	6862 (23.3)	
ASA 2	20,229 (76.6)	20,648 (70.0)	
ASA 3/4/5	1401 (5.3)	1514 (5.1)	
NA	348 (1.3)	472 (1.6)	
Contaminated wound = yes (%)	5724 (21.7)	6440 (21.8)	0.663
Procedure duration in minutes (median [IQR]) ^b	38 [29, 49]	37 [29, 48]	< 0.001
Hospital bed size (%)			< 0.001
< 200	12,328 (46.7)	17,588 (59.6)	
200–499	11,497 (43.5)	5757 (19.5)	
500+	2580 (9.8)	6151 (20.9)	
Procedure after January 1, 2014 = yes (%)	18,081 (68.5)	9612 (32.6)	< 0.001

Abbreviations

ASA American Society of Anesthesiologists

BMI Body mass index

IQR Interquartile range

SAP Surgical antimicrobial prophylaxis

^a BMI NA: Before = 15'510 (58.7%); After = 18'052 (61.2%)^b Duration NA: Before = 144 (0.5%); After = 94 (0.3%)

In the supplementary analyses for the secondary outcomes, SAP administration after clamping was not significantly associated with an increased risk of either superficial wound infections (adjusted OR 1.16, 95% CI 0.93–1.44; $p=0.180$) or the combined endpoint deep wound infections and endometritis (adjusted OR 1.07, 95% CI 0.80–1.42 $p=0.661$, Suppl Tables 3–4).

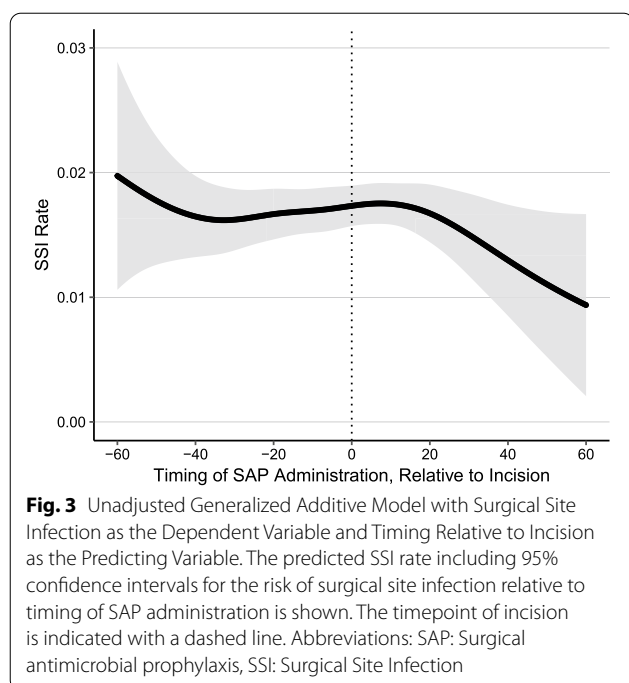
This remained unchanged for the patients with data on BMI (Additional file 1: Tables 5–6).

An adjusted supplementary analysis, with different timing windows, was unable to identify a specific timing window associated with the SSI outcome (Additional file 1: Table 7).

Next, we aimed at verifying that administration after incision is a reliable surrogate marker for administration

after clamping. In the subgroup of the 15 hospitals (15,855 patients) that administered SAP in > 90% of procedures per hospital either before or after incision the adjusted OR of SSI risk for SAP administration after clamping was 0.84 (95% CI 0.54–1.30, $p=0.435$), in line with the main analysis (Additional file 1: Table 8). Even when excluding the 17'205 patients that received SAP within 10 min after incision, the point estimates of this conservative approach lay above 1, but there was still no significant association (adjusted OR 1.10, 0.87–1.38, $p=0.420$; Additional file 1: Table 9).

A stratified analysis (data not shown) demonstrated that for neither of the periods (before/after 2014) SSI was significantly associated with SAP administration pre incision/after clamping.



Staphylococci, Enterobacteriaceae, anaerobes, enterococci and streptococci were the most frequently identified causative microorganisms of SSI. Supplementary Table 10 provides a descriptive overview of microorganism relative to SAP administration before incision/after clamping, and according to all SSI, as well as for deep wound infections and endometritis.

Five patients (0.01%) died during the 1 month follow-up. None of the deaths were associated with an SSI. Missing data analysis is reported in the Supplementary Materials.

Discussion

Principal findings

This largest prospective analytic study with excellent follow-up was unable to identify an additional significant risk if SAP was delayed after cord clamping. Our results show a basically unchanged SSI risk whether SAP is administered before or after clamping.

Of note, almost all estimates of the odds ratio were > 1 , suggesting a numerical tendency to an increased risk in this group. Thus, the odds ratio of the main analysis does not rule out the possibility that the odds of an event may

Table 2 Adjusted Mixed Effects Logistic Regression Model^a with Surgical Site Infection as the Dependent Variable

	OR	LL	UL	p
SAP administration after cord clamping (Ref = before incision)	1.140	0.956	1.360	0.144
Age group				
30–40 years (Ref = < 30 years)	0.760	0.657	0.879	< 0.001
> 40 years (Ref = < 30 years)	0.852	0.640	1.134	0.272
Contaminated wound (Ref = clean, contaminated)	1.270	1.074	1.503	0.005
SAP agent (%)				
Cefazolin (Ref = Amoxicillin/clavulanate)	1.106	0.721	1.697	0.645
Ceftriaxone (Ref = Amoxicillin/clavulanate)	0.939	0.544	1.619	0.821
Cefuroxime (Ref = Amoxicillin/clavulanate)	1.031	0.687	1.547	0.882
Elective surgery (Ref = emergent)	0.574	0.488	0.676	< 0.001
ASA Score				
ASA 2 (Ref = ASA 1)	1.217	1.003	1.477	0.046
ASA 3/4/5 (Ref = ASA 1)	1.326	0.952	1.846	0.095
Procedure duration (per 30 min increase)	1.330	1.189	1.488	< 0.001
Hospital bed size				
200–499 (Ref = < 200)	1.200	0.880	1.634	0.249
500+ (Ref = < 200)	1.231	0.819	1.849	0.317
Procedure after Jan 2014 (Ref = before)	0.852	0.711	1.020	0.081

Abbreviations

ASA American Society of Anesthesiologists

LL Lower limit of 95% confidence interval

OR Odds Ratio

SAP Surgical antimicrobial prophylaxis

UL Upper limit of 95% confidence interval

^a Complete cases only, $n = 48,995$

be increased by up to 36%. Many unmeasured confounders may have been present and the confidence intervals of the estimate are consistent with a potential increase in infection with administration after cord clamping.

In addition, our data show that factors other than timing of SAP administration were significantly associated with SSI risk. It was expected that increased procedure duration, increased BMI, high ASA score, contaminated wound and emergency operation were associated with an increased risk. The finding that age group of 30–40 years had a decreased risk in comparison to <30 years may be due to a selection bias, as patients <30 were more likely to have an emergent procedure and more frequently experienced premature rupture of the membranes. Of note, the choice of SAP agent did not play a significant role regarding SSI risk.

Results (internal and external validity)

The internal validity of our study was excellent, as hospitals throughout Switzerland participated, including smaller institutions (<200) and large centers (>500) beds. The multilevel analysis approach with clustering at the hospital level allowed us to control for potential variation in SSI rate and reporting between the centers.

Concerning external validity, the analysis of large prospective registries may be the ideal source for generating high-quality scientific data [27]. The overall SSI rate was low in our study (1.7%), compared to 4–5% reported by the WHO and the meta-analyses [2, 15] and up to 6–12% from a recent randomized controlled trial [28]. The difference could be explained by the fact that former studies included patients from developing countries in a different setting [2, 15]. In the latter study, the baseline characteristics suggested a relevantly higher BMI (+8 kg/m²) and a higher rate of patients had already had ruptured membranes, both important SSI risk factors after cesarean delivery [28]. As this is a national multi-center study with clustering at institutional level, we are convinced that our results can be transferred to similar health-care settings in resource rich countries, but this may not be the case for lower and middle income countries.

Even though other studies have shown a decrease in SSI risk for SAP before incision, this was relatively small in absolute numbers: the Cochrane review reported 38/2531 mothers developed an endomyometritis before clamping compared to 70/2510 after clamping. This potentially increased risk was not confirmed by our study and must be contrasted with a potential harm to the neonate's immune development [5–9]. Disrupted transmission of maternal *Bacteroides* strains to babies was even seen in vaginally delivered babies whose mothers underwent antibiotic prophylaxis [9].

Finally, the potentially very short time interval between the two strategies argue against a relevant differential risk.

Clinical implications

These results challenge the latest WHO recommendation which extends the time window of SAP from 60 min to 120 min prior to incision but does not consider administration after clamping [29].

Research implications

In future research, the principally unchanged or slightly elevated SSI risk for the mother has to be balanced with long-term neonatal outcomes/microbiome development.

Strengths and limitations

The main strengths of our study were the standardized evaluation of SSI cases by dedicated physicians, a post-discharge surveillance at 30 days, a mere <10.4% loss of follow-up, routine on-site monitoring of the data collection quality, and a multilevel model that permitted adjustment for SSI variation across the institutions. The main limitation of this study, was that the exact timing of clamping was not available and therefore administration after incision served as a surrogate marker. We believe we have sufficient evidence that SAP administration after incision corresponds to “after clamping”. First, clamping is done quickly after incision, usually within 5 min [20]. This is reflected in Fig. 2, where SAP application after incision peaks between 5 and 10 min after incision, compatible with administration after clamping. Moreover, a supplementary analysis failed to identify an optimal timing window within ± 60 min relative to incision. In addition, we performed two subgroup analyses that made post-incisional SAP administration even more likely to represent “after clamping” administration, and the results are in line with the main analysis.

Other limitations of the study were the lack of detailed information concerning the individual surgeons, type of operating room, and patient comorbidities/characteristics (such as diabetes, glycemic control, smoking, nutritional status, intraoperative core temperature, estimated blood loss, and oxygen saturation), preoperative skin preparation procedures and/or the presence of SSI intervention bundles. None of these variables are recorded in the Swissnoso database. In addition, data on antimicrobial treatment before and after surgery, group B streptococcal carriage, multiple pregnancy, and/or vaginal disinfection were not routinely recorded.

The study period extended over 10 years, with potential changes in the management of cesarean section. However, cesarean section rates in Switzerland during this period remained constant at $\sim 33\%$ [30, 31], and surgical

technique has not significantly changed over this time period. Stratified analysis for the period before and after 2014 did not provide arguments for a significant confounding by the two periods.

The variable BMI was only available in 40% of patients. Increasing BMI is a well-known risk factor for SSI [28, 32, 33]. It might have been a confounding factor, but we performed several subgroup analysis with patients where BMI was available and the results were in line with the main analysis.

Conclusions

Results of this large prospective study provide evidence that the risk of SSI for the mother in cesarean section is similar for SAP given before incision or after umbilical cord clamping.

Supplementary Information

The online version contains supplementary material available at <https://doi.org/10.1186/s13756-020-00860-0>.

Additional file 1. Supplementary Materials.

Abbreviations

WHO: The World Health Organization; SAP: Surgical antimicrobial prophylaxis; SSI: Surgical site infections; BMI: Body mass index; ASA: American Society of Anesthesiologists; CDC: Centers for Disease Control and Prevention; GAM: General additive models; OR: Odds ratio; CI: Confidence interval.

Acknowledgments

We thank all participating centers for providing their surveillance data.

These data were collected in collaboration with the Swiss National Association for the Development of Quality in Hospitals and Clinics (ANQ).

All authors have seen, critically revised and approved the manuscript.

Members of Swissnoso are: Carlo Balmelli, MD, Lugano; Marie-Christine Eisenring, RN, ICP, CNS, Sion; Stephan Harbarth, MD, MS, Geneva; Jonas Marschall, MD, MSc, Bern; Didier Pittet, MD, MS, Geneva; Zurich; Hugo Sax, MD, Zurich; Matthias Schlegel, MD, St. Gallen; Alexander Schweiger, MD, Basel; Laurence Senn, MD, Lausanne; Nicolas Troillet, MD, MSc, Sion; Andreas F. Widmer, MD, MSc, Basel; Giorgio Zanetti, MD, MSc, Lausanne.

Disclosure statement

None.

Clinical trial

NA

Paper presentation information

An abstract of this article has been previously submitted to the (cancelled) ECCMID 2020 conference and was covered by a media release.

Disclaimer

NA

Authors' contributions

Conception and Design: RS, JM, AW. Acquisition of Data: NT, AW, RS and Swissnoso. Statistics: AA, RS; Writing: RS, AW. Interpretation and Analysis: All authors; RS is guarantor of the paper. The author(s) read and approved the final manuscript.

Funding

This work was supported in part by the Swiss National Science Foundation [grant number 32003B_179500] (recipients: JM, NT, AW).

Availability of data and materials

The datasets generated and analyzed during the current study are not publicly available according to Swissnoso data sharing regulations. Data is available upon reasonable request to the Swissnoso Scientific Board. (<https://www.swissnoso.ch/forschung-entwicklung/reglemente/>).

The statistical code is available on reasonable request to the corresponding author.

Ethics approval and consent to participate

SSI surveillance by *Swissnoso* (www.swissnoso.ch) is mandated by Swiss healthcare policies and is considered a quality improvement project. All patients were informed about their automatic inclusion in SSI surveillance on admission and given the opportunity to opt out at the telephone interview. Summary results of the SSI incidences are published yearly (www.anq.ch). The study was approved by the Bernese Cantonal human subjects committee (KEK 2019–00294).

Consent for publication

Not applicable.

Competing interests

The authors declare that they have no competing interests.

Author details

¹ Department of Infectious Diseases, Bern University Hospital, University of Bern, Freiburgstrasse, 3010 Bern, Switzerland. ² Swissnoso, National Center for Infection Control, Bern, Switzerland. ³ Department of Obstetrics and Gynaecology, Bern University Hospital, University of Bern, Bern, Switzerland. ⁴ Swiss Society of Obstetrics and Gynaecology, Bern, Switzerland. ⁵ Department of Biochemistry and Microbiology, Rutgers School of Environmental and Biological Science, New Brunswick, NJ, USA. ⁶ Service of Infectious Diseases, Central Institute, Valais Hospitals, Sion, Switzerland. ⁷ Department of Infectious Diseases, University Hospital Basel, Basel, Switzerland.

Received: 2 October 2020 Accepted: 20 November 2020

Published online: 22 December 2020

References

1. Small F, Hofmeyr GJ. Antibiotic prophylaxis for cesarean section. *Cochrane Database Syst Rev*. 2002;3:CD000933.
2. Small FM, Grivell RM. Antibiotic prophylaxis versus no prophylaxis for preventing infection after cesarean section. *Cochrane Database Syst Rev*. 2014;10:CD007482.
3. Bratzler DW, Dellinger EP, Olsen KM, et al. Clinical practice guidelines for antimicrobial prophylaxis in surgery. *Am J Health Syst Pharm*. 2013;70(3):195–283.
4. Sattler FR, Weitekamp MR, Ballard JO. Potential for bleeding with the new beta-lactam antibiotics. *Ann Intern Med*. 1986;105(6):924–31.
5. Amenyogbe N, Kollmann TR, Ben-Othman R. Early-life host-microbiome interphase: the key frontier for immune development. *Front Pediatr*. 2017;5:111.
6. Aloisio I, Mazzola G, Corvaglia LT, et al. Influence of intrapartum antibiotic prophylaxis against group B Streptococcus on the early newborn gut composition and evaluation of the anti-Streptococcus activity of Bifidobacterium strains. *Appl Microbiol Biotechnol*. 2014;98(13):6051–60.
7. Bokulich NA, Chung J, Battaglia T, et al. Antibiotics, birth mode, and diet shape microbiome maturation during early life. *Sci Transl Med*. 2016;8(343):343ra82.
8. Tamburini S, Shen N, Wu HC, et al. The microbiome in early life: implications for health outcomes. *Nat Med*. 2016;22(7):713–22.
9. Shao Y, Forster SC, Tsaliki E, et al. Stunted microbiota and opportunistic pathogen colonization in caesarean-section birth. *Nature*. 2019;574(7776):117–21.
10. Hviid A, Svanstrom H, Frisch M. Antibiotic use and inflammatory bowel diseases in childhood. *Gut*. 2011;60(1):49–54.

11. Costantine MM, Rahman M, Ghulmiyah L, et al. Timing of perioperative antibiotics for cesarean delivery: a meta-analysis. *Am J Obstet Gynecol*. 2008;199(3):301 e1–6.
12. Baaqeel H, Baaqeel R. Timing of administration of prophylactic antibiotics for caesarean section: a systematic review and meta-analysis. *BJOG*. 2013;120(6):661–9.
13. Mackeen AD, Packard RE, Ota E, et al. Timing of intravenous prophylactic antibiotics for preventing postpartum infectious morbidity in women undergoing cesarean delivery. *Cochrane Database Syst Rev*. 2014;12:CD009516.
14. Bollig C, Nothacker M, Lehane C, et al. Prophylactic antibiotics before cord clamping in cesarean delivery: a systematic review. *Acta Obstet Gynecol Scand*. 2018;97(5):521–35.
15. WHO. WHO recommendations for prevention and treatment of maternal peripartum infections. Geneva: World Health Organization; 2015.
16. Guideline Sectio Caesarea. Schweizerische Gesellschaft für Gynäkologie. 2015. <http://www.sggg.ch/fachthemen/guidelines/>. Accessed 9 Dec 2020.
17. Senn L, Vuichard D, Widmer AF, et al. Aktualisierte Empfehlungen zur perioperativen Antibiotikaphylaxe in der Schweiz, 2015. *Swissnoso*. 2015;20(1):1–8.
18. Weber WP, Mujagic E, Zwahlen M, et al. Timing of surgical antimicrobial prophylaxis: a phase 3 randomised controlled trial. *Lancet Infect Dis*. 2017;17(6):605–14.
19. Sommerstein R, Atkinson A, Kuster SP, et al. Antimicrobial prophylaxis and the prevention of surgical site infection in cardiac surgery: an analysis of 21 007 patients in Switzerland. *Eur J Cardiothorac Surg*. 2019;56(4):800–6.
20. Lenz F, Kimmich N, Zimmermann R, et al. Maternal and neonatal outcome of reverse breech extraction of an impacted fetal head during caesarean section in advanced stage of labour: a retrospective cohort study. *BMC Pregnancy Childbirth*. 2019;19(1):98.
21. Kuster SP, Eisenring MC, Sax H, et al. Structure, process, and outcome quality of surgical site infection surveillance in Switzerland. *Infect Control Hosp Epidemiol*. 2017;38(10):1172–81.
22. Troillet N, Aghayev E, Eisenring MC, et al. First results of the Swiss National Surgical Site Infection Surveillance Program: who seeks shall find. *Infect Control Hosp Epidemiol*. 2017;38(6):697–704.
23. Mangram AJ, Horan TC, Pearson ML, et al. Guideline for prevention of surgical site infection, 1999. Hospital Infection Control Practices Advisory Committee. *Infect Control Hosp Epidemiol*. 1999;20(4):250–78 quiz 79–80.
24. Swissnoso. Regulations. <https://www.swissnoso.ch/forschung-entwicklung/reglemente/> [last cited 15 Feb 2018].
25. R Core Team. R: a language and environment for statistical computing. Vienna: R Foundation for Statistical Computing; 2014.
26. van Buuren S, Groothuis-Oudshoorn K. mice: Multivariate Imputation by Chained Equations in R. *J Stat Software*. 45(3):1–67.
27. Frieden TR. Evidence for health decision making - beyond randomized, Controlled Trials. *N Engl J Med*. 2017;377(5):465–75.
28. Tita AT, Szychowski JM, Boggess K, et al. Adjunctive azithromycin prophylaxis for cesarean delivery. *N Engl J Med*. 2016;375(13):1231–41.
29. Allegranzi B, Bischoff P, de Jonge S, et al. New WHO recommendations on preoperative measures for surgical site infection prevention: an evidence-based global perspective. *Lancet Infect Dis*. 2016;16(12):e276–e87.
30. Federal Statistical Office. Kaiserschnittrate 2013–2017. Published 22.02.2019. <https://www.bfs.admin.ch/bfs/de/home/statistiken/kataloge-datenbanken/karten.assetdetail.7527285.html>.
31. Federal Office of Public Health. Kaiserschnittgeburten in der Schweiz. Bern, 27. 2013. <https://www.bag.admin.ch/dam/bag/de/dokumente/cc/bundesratsberichte/2013/kaiserschnittgeburten.pdf.download.pdf/pdf>. Accessed 9 Dec 2020.
32. Hawn MT, Richman JS, Vick CC, et al. Timing of surgical antibiotic prophylaxis and the risk of surgical site infection. *JAMA Surg*. 2013;148(7):649–57.
33. Practical Healthcare Epidemiology, 3rd Edition. Edited by Ebbing Lautenbach, Keith F. Woeltje, and Preeti N. Malani. Chicago IL: The University of Chicago Press, 2010. Chapter 15. Basics of Surgical Site Infection Surveillance and Prevention.

Publisher's Note

Springer Nature remains neutral with regard to jurisdictional claims in published maps and institutional affiliations.

Ready to submit your research? Choose BMC and benefit from:

- fast, convenient online submission
- thorough peer review by experienced researchers in your field
- rapid publication on acceptance
- support for research data, including large and complex data types
- gold Open Access which fosters wider collaboration and increased citations
- maximum visibility for your research: over 100M website views per year

At BMC, research is always in progress.

Learn more biomedcentral.com/submissions

