



OPEN

SUBJECT AREAS:

BIOLOGICAL
FLUORESCENCE

NANOSCALE BIOPHYSICS

Received
13 December 2014Accepted
25 February 2015Published
19 March 2015Correspondence and
requests for materials
should be addressed to
E.G. (egratton22@
gmail.com)

Single cell visualization of transcription kinetics variance of highly mobile identical genes using 3D nanoimaging

Paolo Annibale & Enrico Gratton

Laboratory for Fluorescence Dynamics, Department of Biomedical Engineering, University of California Irvine.

Multi-cell biochemical assays and single cell fluorescence measurements revealed that the elongation rate of Polymerase II (PolII) in eukaryotes varies largely across different cell types and genes. However, there is not yet a consensus whether intrinsic factors such as the position, local mobility or the engagement by an active molecular mechanism of a genetic locus could be the determinants of the observed heterogeneity. Here by employing high-speed 3D fluorescence nanoimaging techniques we resolve and track at the single cell level multiple, distinct regions of mRNA synthesis within the model system of a large transgene array. We demonstrate that these regions are active transcription sites that release mRNA molecules in the nucleoplasm. Using fluctuation spectroscopy and the phasor analysis approach we were able to extract the local PolII elongation rate at each site as a function of time. We measured a four-fold variation in the average elongation between identical copies of the same gene measured simultaneously within the same cell, demonstrating a correlation between local transcription kinetics and the movement of the transcription site. Together these observations demonstrate that local factors, such as chromatin local mobility and the microenvironment of the transcription site, are an important source of transcription kinetics variability.

A growing evidence points to a significant variance characterizing the transcription process¹. Sizable cell-to-cell differences were recently quantified in the amount of transcript of identical genes² and stochastic gene expression from an isogenic cell line containing a single fluorescent reporter gene was measured to depend upon the genomic site of the insertion³. Although elongation is one of the fundamental steps of transcription, and it is now accepted that elongation rate may play a regulatory function, the exact determination of the speed of the elongation complex processivity in vivo is still the subject of debate¹. Recent global run-on sequencing experiments demonstrated that elongation rates varies up to four times among distinct genomic loci, and that PolII can elongate at different speeds along identical genes in different cell lines and in response to different signaling pathways⁴. This was recently confirmed by a fluorescence microscopy study that highlighted a significant variability in PolII elongation rates along the MDN1 gene, although measured across different yeast cells⁵.

However, conclusive evidence able to identify whether factors such as genomic position, local mobility and microenvironment, are indeed the primary determinant of the observed variability in the kinetics of transcription, in particular elongation, is missing. In particular, the question whether increased local mobility of individual chromatin regions correlates to their transcriptional output is still the subject of active research⁶. Studies which exploited heat-sensitive PolII mutants in yeast did not observe any change in the confinement radius of fluorescently tagged loci in cells where elongation was disabled⁷. In mammalian systems the transcriptional activity of selected genes was recently correlated to their physical displacement within the nucleus, but only in the particular case of transcriptional activation following an actin dependent, long range motion (0.5–6 μm) of HSP70 genes towards the nuclear speckles after heat shock⁸.

The reasons for the large variability affecting PolII transcription have been so far difficult to isolate, even in single cell experiments. To do so, it would be necessary to first isolate those extrinsic factors, such as cell to cell variability, that contribute a large part of this variance. This would allow assessing the role of the dynamic, spatial properties of the active site in regulating transcription kinetics. We propose here an original application of a fast 3D nanoimaging method, namely 3D orbital particle tracking, towards this goal. We sought to exploit the observation of a spatial structure in the organization of fluorescently labeled nascent mRNAs within the model system represented by the transgene array of U2OS 263 cells, a cell line allowing simultaneous labeling of both a gene and its transcript⁹. We observe that mobile mRNA foci or *petals* surround the denser chromatin array.

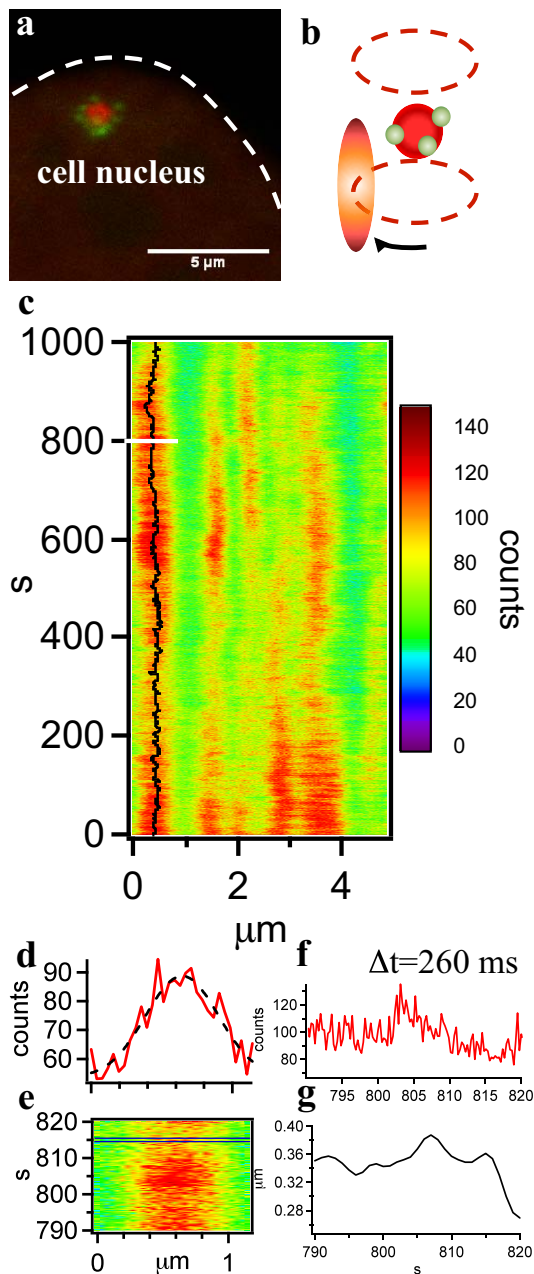


Figure 1 | Imaging mRNA synthesis distinct regions of an activated transgene array at high spatio-temporal resolution. (a) Multicolor Laser Scanning micrograph of the chromatin array (LacI-mCherry: red) and the mRNA (MS2-EGFP: green) in U2OS 263 cells following Dox induction (+30'). Excitation is provided with 561 nm and 488 nm lasers. Petals of mRNA synthesis are clearly visible. (b) Schematics of the experimental configuration for 3D orbital tracking using a 2-photon laser-scanning microscope. The difference in the fluorescence intensity collected from a circular orbit above and a circular orbit below the particle determines its axial coordinate (z -position)¹⁹. The intensity profile along each circular orbit is used to find the x and y position of the fluorescence center of mass in the imaging plane, using a Fast Fourier Transform based localization algorithm. The particle can be followed using a feedback loop that re-centers the orbit on the particles at each cycle. One orbit is performed every 32 ms and a full 3D localization cycle happens within eight orbits. (c) Kymograph of the fluorescence intensity collected along the entire orbit, reflecting the presence of five globular regions or petals. Each line is calculated integrating the fluorescence intensity of 16 orbits, yielding a temporal resolution of 260 ms. The black line highlights the angular trajectory of one of the petals. (d and e) Detail of a 30 s interval of the

fluorescence kymograph, and Gaussian fit of the line intensity profile. The center of the petal is localized with a precision <6 nm. (f) Intensity profile measured from the carpet displayed in e (g) Sub μ m displacement trajectory of the petal.

Although transgene arrays are artificial systems, they have been highly valuable in the past to study the dynamics of large scale chromatin domains^{10–13} and its overall transcription¹⁴. Here we examine specifically the transcription dynamics of individual genes within the repeat and its relationship with chromatin mobility *in vivo*. Each copy of the 200 gene repeats composing the transgene array can be visualized by means of a Lac Operator cassette¹⁵ and an MS2 cassette allows nascent mRNA to be decorated by a fusion of EGFP with MS2, a coat protein which recognizes a specific and repeated hairpin sequence in the mRNA molecule¹⁶. Upon Doxycycline (Dox) induction it was demonstrated that the array transitions from a heterochromatic state to a euchromatic condition following histone exchange that removes H3K9 methylation⁹. The authors of the study provided evidence that only parts of the repeats were being transcribed, suggesting higher resolution analysis of the locus to determine effects of sub chromosomal features on kinetics of mRNA synthesis.

We developed a way to visualize the spatial and fluorescence trajectory of each of the petals at high resolution over space and time by means of a fluorescence nanoimaging method based on 3D orbital tracking in a 2-photon laser-scanning microscope. 3D orbital tracking is ideally suited to capture fluctuations in the fluorescence signal arising from the enzymatic activity of PolII within the reference system of the active fluorescently labeled array at ms temporal resolution. In combination with phasor analysis, a fit-free method that allows us to visualize and to compare PolII elongation rates within different petals, we measure a fourfold variation in the average elongation rates across identical copies of the same gene measured simultaneously within the same cell.

Furthermore, the position of individual fluorescent particles within the orbit can be determined with nm-accuracy, depending exclusively on the measured signal to noise ratio^{17,18}. This allows us to determine if any relationship exists between the kinetic rates measured in the petals and their local mobility. We observe that those petals that can explore a larger region of space also display higher elongation rates. Finally, by cross-correlating the nm-sized displacement of petals to the concomitant biogenesis of mRNA molecules, we provide evidence of an active mechanism determining directional motions of the active loci concomitant to increases in transcription.

Results

Active transcription sites form a dynamic petal-like structure upon induction. We found that the mRNA fluorescence signal, following induction in U2OS 263 cells, concentrates in multiple well-defined regions surrounding the denser core of the labeled transgene array (Figure 1a), of approximately one μ m in diameter. The number of these complexes varies from cell to cell, from a lower number of one, up to seven distinguishable loci. After the first ten to fifteen minutes following induction, the fluorescence from the petals reaches a steady state that is maintained over a timescale of hours. Each petal undergoes sizable angular displacements in the reference system centered on the gene array. 2D time-lapse imaging (Supplementary Movie 1) clearly shows that the radial position of this mRNA corona is very stable, while the petals tend to move on the surface of the chromatin array. The fluorescently labeled gene array also displays a highly dynamic behavior, owing to overall chromatin motion, displacement of the nucleus, global movement of the entire cell and μ m-sized sample drifts occurring during the experiments (Supplementary Figure 1).



In order to capture the rapid dynamic processes occurring in each petal and to decouple them from the overall motion of the gene array we employed 3D orbital tracking to follow the labeled transgene array at millisecond temporal resolution and with nm precision in a 2-photon laser scanning microscope (see Materials and Methods and description of the setup)¹⁹. Briefly, as illustrated in Figure 1b, the tightly focused beam of a pulsed infrared femtosecond laser light source is steered continuously in circular orbits around the fluorescently labeled transgene array. As opposed to raster scan imaging, this approach significantly improves the temporal resolution of the measurement and each orbit can be centered on the recovered object position using an on-the-fly localization and feedback mechanism¹⁷. Detection in multiple colors allows using one spectral channel for tracking the transgene array and the other to follow the fluorescence trajectory of the MS2 decorated mRNA petals. Since the PSF of the microscope is elongated along the axial direction, and furthermore the orbits are performed at a certain distance ($\sim 1 \mu\text{m}$) from the center of the transgene array, the contribution of axial fluctuations of the petals or of the residual radial motion are almost negligible (Supplementary Figure 2). The fluorescence collected along multiple orbits can then be displayed in the form of a kymograph or intensity carpet, and in this representation each petal appears as a vertical trace, as displayed in Figure 1c. Intermittency in the fluorescence on both fast and slow timescales is visible.

Each petal can be individually resolved by the microscope PSF, and its angular trajectory over time tracked continuously by fitting the carpet with a Gaussian function line by line²⁰. This process allows constructing kymographs corrected for any spatial fluctuation, and the remaining fluorescence fluctuations arise only because of kinetic processes, such as increases in fluorescence signal due to the addition of MS2 fluorescent subunits as PolII elongates, or decreases in fluorescence due to the release of fluorescently labeled mRNA molecules (Figure 1c–d). Furthermore, the values used to correct the position of the petals produce trajectories of the center of the petal with nm-precision, depending only upon the signal to noise ratio. It is then possible to reconstruct both the fluorescence and spatial trajectory of each of the petals over an unprecedented period of time (up to hours) and temporal resolution (260 ms in this case), as displayed respectively in Figure 1e–f.

The observed steady state is a dynamic equilibrium determined by the biogenesis of new mRNA molecules and the release of complete mRNAs in the nucleoplasm. We found that fluorescence trajectories are not temporally cross correlated (data not shown) among petals surrounding the same chromatin locus, supporting the notion that each petal on the surface of the denser chromatin array acts as an independent locus. These observations argue in favor of the possibility of measuring the transcriptional activity of distinct petals within the transgene as an interesting model of transcription from tandemly repeated genes²¹. Upon photo bleaching, as illustrated in Supplementary Figure 3, it is possible to observe a complete recovery of the fluorescence intensity of a petal, confirming that these structures are regions of active transcription and not of local accumulation of mRNA transcript. To achieve equilibrium, the synthesis of new molecules needs to be compensated, to avoid ongoing accumulation of mRNAs on the petal, which we do not observe. This suggests that fluorescent mRNA molecules are not only synthesized, but also released from the petals in the nucleoplasm, resulting in a dynamic equilibrium at the locus.

We validated this hypothesis by performing tracking-Pair Correlation Analysis, a fluorescence fluctuations microscopy method that provides information on the degree of molecular diffusion or flow between two points along the path of a fast scanning laser beam²². The pair correlation method is based on spatial cross-correlation in the fluorescence intensity arising from two distinct points at a distance d . A cross correlation signal indicates that molecules that leave

one point can reach the other. The delay in such spatial cross-correlation reflects the average physical length of the path taken by a molecule. Starting from the fluorescence intensity carpet collected along the trajectory of the scanning beam, a new carpet can be therefore constructed: the intensity values in each column is indicative of diffusion or flow from that point to a point at a distance d along the orbit in the direction followed by the scanning beam^{22,23}.

As illustrated in Figure 2a, for this measurement we switched from a circular to a trefoil orbit that allows us to measure diffusion and flow of mRNA molecules across different paths surrounding the transgene array²⁴. We focused in particular on the motion from the petals far into the nucleoplasm (point 1 to 2, 4 to 6 and 10 to 11 in the Figure 2a diagram), which probes the ability of mRNA to leave or re-enter the core of the transgene array (Figure 2a 3 to 5 and 8 to 9 respectively). Each of these pairs of locations is spaced 12 pixels along the orbit. Figure 2b displays the pCF carpet calculated using a $d = 12$ pixels distance between the columns of the intensity carpet. A strong spatial cross-correlation is observed between the petals and the distal extremities of the orbit lobes, confirming that most of the mRNA molecules that reach further into the nucleoplasm originate from the transcribing petals. Barriers to diffusion, in the form of dark pCF carpet columns, are instead observed for displacements towards or away from the center of the array, confirming that mRNA synthesis occurs on the surface and that the chromatin density within the array impedes any mRNA diffusion or flow. Finally, mRNA nucleoplasmic diffusion is detected at the distal extremities of the trefoil lobe. Interestingly, a significant difference can be observed in the molecular flow of mRNA molecules that originate from each of the three petals. Figure 2c illustrates that the average delay experienced by mRNA molecules leaving the three positions marked as 1, 4 or 10 in reaching the nucleoplasm is different²⁵.

Extracting PolII transcription kinetics using fast fluorescence fluctuations and the phasor approach. We use fluctuation correlation spectroscopy in combination with the phasor analysis to extract transcription kinetics, and in particular PolII elongation kinetics within the petals. As illustrated in Supplementary Figure 4a–b, the fluorescence trajectory of a petal can be collected for up to hours following induction, displaying fast fluctuations in the 0.1–10 s timescale as well as much slower intensity fluctuations over a timescale ranging from tens of seconds to several minutes.

This observation is in qualitative agreement with recent observations of the dynamics of fluorescently labeled mRNA on a single transcription site^{26,27}. Furthermore, these fast fluctuations are temporally correlated, as observed calculating the AutoCorrelation Function (ACF) of the time series (Supplementary Figure 4c). The timescale of the correlation reflects the underlying kinetics of the transcription process (Supplementary Figure 5).

To extract elongation kinetics we adopt here a novel strategy, based on the calculation of the phasor of the ACF. Phasor analysis, i.e. the representation of the harmonic components of a signal as a point on the unit circle in the complex plane, was successfully applied to study lifetime data^{28,29}, spectral images^{30,31}, and more recently diffusion³². It allows for a prompt visualization and fingerprinting of the data from a time series, providing an intuitive and graphical way to distinguish multi-exponential lifetime decays, closely spaced spectra and, when applied to the ACF of a short fluorescence time series and referenced using simulated data, molecular diffusion coefficients. Since the experimental ACF displays an exponential character (as illustrated in Supplementary Figure 3c), the analogy to the phasor treatment of exponentially decaying fluorescence lifetimes is immediate.

Using this method, as is schematically illustrated in Supplementary Figure 6, each petal kymograph maps to a cloud of points upon the unit circle, and its average angular coordinate reflects the kinetic information contained within the fluorescence fluctuations. Angular values are

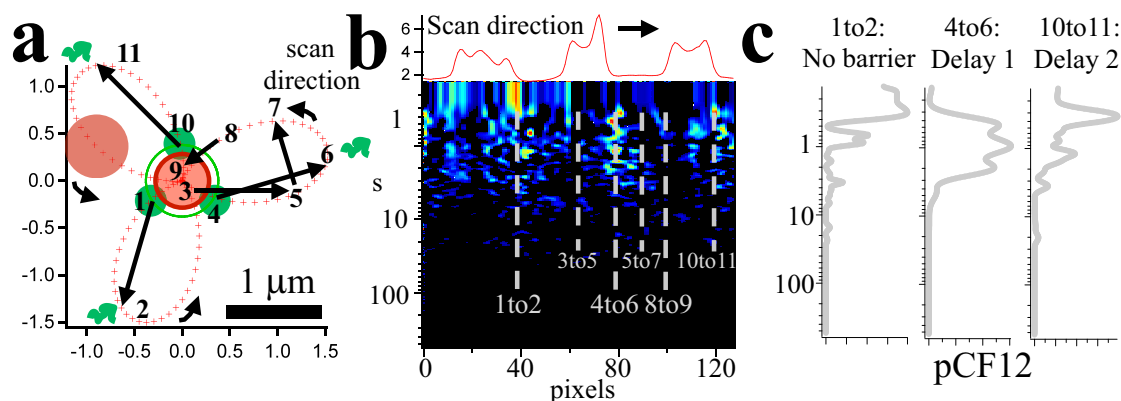


Figure 2 | pCF analysis of mRNA molecules leaving the petals and flowing into the nucleoplasm. (a) Schematics of the laser trajectory around the transgene array. The laser PSF performs a trefoil orbit and the lobes of the trefoil reach into the nucleoplasm about $1\ \mu\text{m}$ away from the center of the array. A distance of 12 pixels along the rows of the carpet is used to calculate the pCF carpet. The fluorescence collected at each point along the orbit is cross-correlated to that recovered at a point 12 pixels away (a variable distance given the shape of the orbit). The result of the cross-correlation at each instant of time is the Pair Correlation Function (pCF). (b) The pCF calculated for each point of the orbit can be used to calculate the pair correlation carpet (pC carpet). Each column of the pC carpet indicates the degree of connection (due to diffusion or flow of fluorescently labeled mRNA) between two positions spaced at 12 pixels along the orbit. Intensity at short times in the 1 to 2 column indicated diffusion of mRNA molecules from the petals, rather than from the center of the array (no cross-correlation in the 3 to 5 column). The pCF 4 to 6 highlights a delay for the mRNA to reach the nucleoplasm from this petal. The mRNAs diffuse freely in the nucleoplasm, as indicated by the 5 to 7 column, but cannot reach the center of the dense chromatin array (no cross-correlation is observed in the transition 8 to 9). The amount of delay for the mRNA in reaching the nucleoplasm is again different when looking at the last petal (10 to 11). The pC carpet was smoothed to reduce noise. (c) Schematic representation of the pCF at the positions where newly synthesized mRNAs leave the petals. Delays of up to a few seconds in reaching the lobes of the orbit can be observed.

converted into elongation rates using a reference set of simulated PolII elongation runs with different velocities as well as different termination rates. A full description of the simulation code and the phasor analysis can be found in the Supplementary Materials and Discussion.

The parameters for the simulations were taken from Darzacq *et al.*⁴. If, for example, we assume an effective elongation rate of approximately one MS2 loop/s (corresponding to about 60–65 bp/s), and a mRNA release time of about 500 s due to 3' end processing, the dwell time of fluorescently labeled mRNA on the transcript would be of the order of 550 s. Ideally, for an individual transcript, intensity fluctuations should not be observed any more during the release time, i.e. after PolII elongation on the $24\times$ MS2 cassette (Supplementary Figure 5). Therefore, an analysis that high-pass filters the signal for fluctuations occurring on a faster timescale, such as dividing the time trace in bins, and calculating the ACF and the phasor for each bin, would be able to highlight fluctuations arising from the elongation step.

We validated this assumption by generating simulated trajectories representing the fluorescence time traces of a pool of PolIIs ($N = 100$) initiating, elongating and being released from an individual gene (see Supplementary Materials and Discussion) at elongation rates ranging from a few bp/s and including previously reported PolII elongation values at 12 bp/s³³, 20 bp/s²⁶, 60 bp/s¹⁴, 120 bp/s, and finally up to a much higher rate of 600 bp/s³⁴. Termination times were also varied over two orders of magnitude, from about 5 s to 500 s. Phasor analysis of the simulated datasets highlights that individual changes in transcription elongation give rise to a significant change in the corresponding phasor (Supplementary Figure 7a–b), and that, as expected, elongation changes can be detected unambiguously over at least an order of magnitude (8–80 bp/s) even in the presence of the large variance in termination rates. Changes in initiation rate did not appear to influence the analysis once a steady state was reached within the petal (data not shown). On the other hand, if the termination rate is assumed comparable to the elongation rate (as done in Larson *et al.*²⁶), the resulting phasor-angle vs termination allows measuring elongation changes over two orders of magnitude (Supplementary Figure 7c). Phasors of the experimental

trajectories can then be plotted on the unit circle and referenced using the simulated ones, as illustrated in (Supplementary Figure 7d).

Phasor analysis highlights a wide range of transcription kinetics within a single cell. The phasor approach allows prompt comparison of elongation velocities across different cells, across different petals within the same cell, and even between temporally distinct portions of the same petal. Figure 3 displays the PolII elongation rates extracted from the phasor analysis performed on all the petals kymographs of each of 11 interphase U2OS 263 cells following Dox induction. Each cell (labeled A–K) displays a quite distinct average elongation value, pointing to the fact that PolII elongation on the same gene displays a large variability across different cells⁵. As illustrated by the scatter cloud indicated by ALL in Figure 3a, the combined PolII elongation values span almost entirely the range of elongation speeds reported in the MS2 literature, from below 10 bp/s to over 200 bp/s, according to our calibration¹. The average elongation value that we measure (42 bp/s) is in excellent agreement with the recent measurement from run-on sequencing, which yields 35 bp/s⁴.

Since an individual array gives rise to multiple petals, the tracking-phasor analysis allows comparing the transcription kinetics of multiple, identical genetic loci within the same cell and at the same time. Figure 3b illustrates that within an individual cell (e.g. cell E) PolII elongation rate can change by more than a factor of four between the slowest and fastest petal, while the variance of elongation rates measured within a petal can span over an order of magnitude.

Furthermore, our approach allows measuring the temporal evolution of PolII elongation within an individual petal over time. Since phasor analysis divides the carpet in periods, corresponding to a distinct time, it is possible to observe the evolution of PolII elongation rate along a specific petal. Figure 3c displays the example of a petal “switching on” following Dox induction. The markers in Figure 3d display the corresponding PolII elongation rate. This approach reveals that, as the petal turns on, the average PolII elongation rate increases by almost an order of magnitude over an interval of 45 minutes. Figure 3e displays the reverse situation, where the

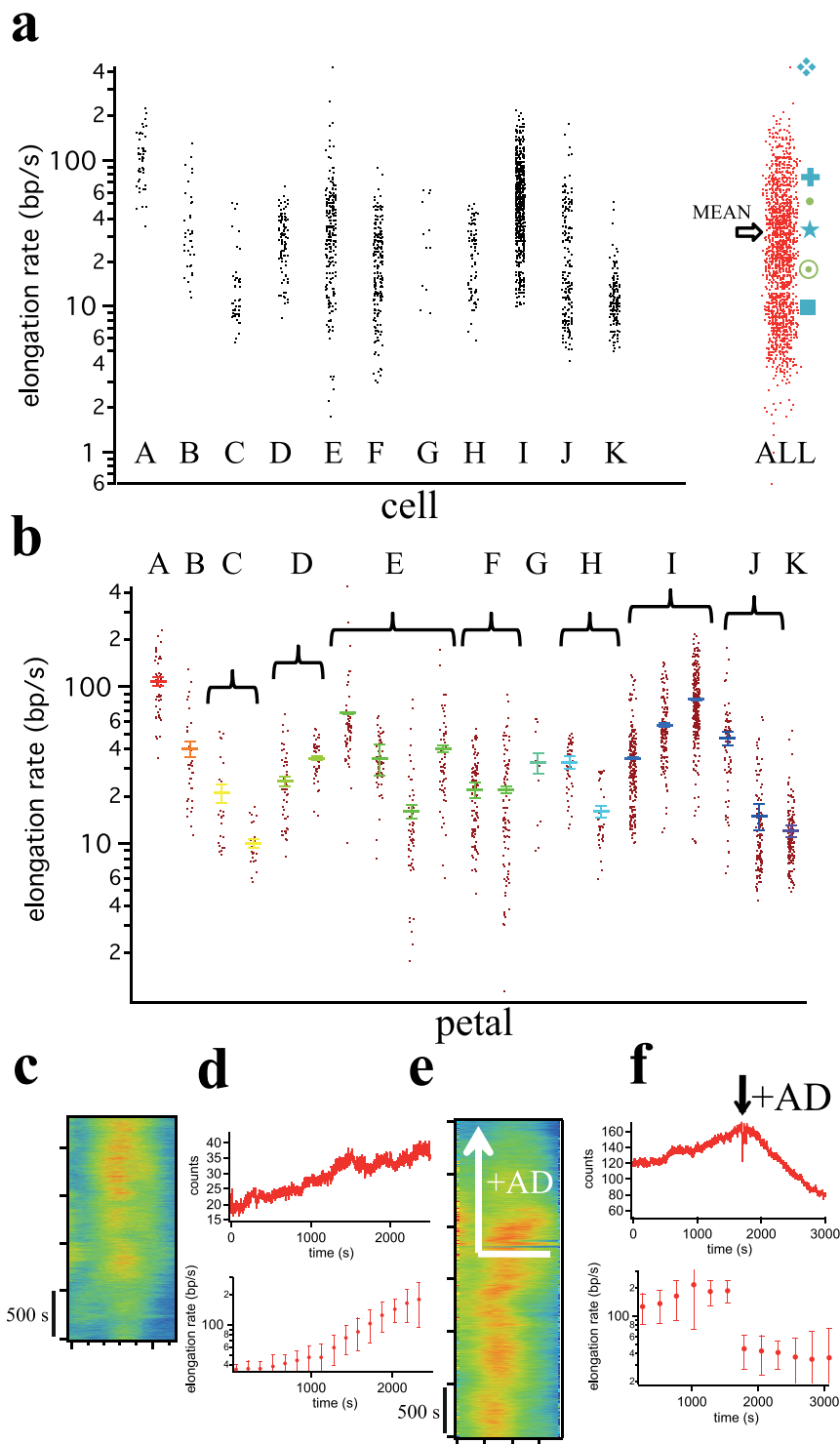


Figure 3 | Measuring heterogeneous PolII elongation kinetics across cells, within cells and within petals. (a) PolII elongation rates measured using the Phasor Method in different interphase cells. Letters A-K identify 11 different U2OS 263 cells containing the transgene array. The scatter plot for each cell is obtained by combining the elongation measurements on multiple petals. The distribution of elongation rates integrated for all the cells is labeled as ALL. Symbols indicate previous measurements of PolII elongation using the MS2 system: *Diamond* Maiuri *et al.*; *Cross* Darzacq *et al.*; *Dot* Hocine *et al.*; *Star* Boireau *et al.*; *Circle-dot* Larson *et al.*; *Square* Yunger *et al.* Blue: mammalian cell lines. Green: yeast. (b) Scatter plot of PolII elongation rates measured in the petals inside the cells reported in panel a. Mean Values and Standard Error of the Mean are superimposed. (c) Fluorescence kymograph of a petal observed to display increasing MS2-EGFP intensity over a period of approximately 35 minutes after Dox induction, indicative of activation. (d) (top) Intensity counts for the kymograph in c and (bottom) corresponding elongation rates as a function of time. (e) Intensity carpet of a petal upon treatment with 10 µg/ml AD. (f) (top) Intensity counts for the kymograph in (e) and (bottom) corresponding elongation rates as a function of time.



transcriptional activity of a steadily expressing petal is inhibited using the drug ActinomycinD (AD). Following perfusion with the drug, the measured PolII velocity drops, again by almost an order of magnitude, as indicated in Figure 3f. Together these results indicate that PolII elongation along a gene can significantly change over time, and that the variance observed for each of the petals is compatible with a range of PolII velocity between extremes as far apart as an order of magnitude.

Active transcription correlates with physical movements of the transcription sites. The capability to perform observations on a single locus as a function of time with high spatial and temporal resolution prompted us to address the longstanding question whether a relationship exists between transcriptional activity and the physical movements of the induced gene⁶. Our nanoimaging method provides both the spatial and temporal resolution necessary to address this question providing novel information: nm-sized displacements of the active genes in the reference system of the array, and therefore devoid of any drift, can be correlated at sub-second temporal resolution to the fluorescence fluctuations arising from mRNA MS2-EGFP binding to newly synthesized mRNA molecules as PolII elongates.

In the polar coordinates reference system centered on the transgene array, the motion of the petals is predominantly angular, as can be observed in Figure 4a which displays the representative positions of petals observed over time by 2D time lapse imaging in a plane crossing the transgene array. Each petal typically explores an arc of a few hundred nanometers along the circumference of the array (the azimuthal angle φ). The polar angle θ is also expected to change, but its changes are not detected in the kymographs nor do they influence the kymograph intensity given the multiplane orbital tracking geometry, as illustrated in Supplementary Figure 2). We then calculated the Mean Squared Displacement (MSD) of the angular (φ) trajectories of each petal, in units of μm along the circumference of the transgene. The MSD analysis has been routinely employed in the analysis of trajectories of individual chromosomal loci: the constraint radius R_{max} measured from the saturation value of the MSD is a common indicator of chromatin mobility³⁵ and the functional dependence of the MSD curve at different timescales was employed to investigate chromatin properties in the context of polymer-like fibers³⁶.

Figure 4b displays the experimental MSD curves calculated using a lag time τ covering an interval between 1 s and 512 s. The average MSD curve clearly displays the presence of two regimes, exhibiting a power law dependence on time: a short time regime (<5 s) with an exponent equal to 0.99 ± 0.04 and an intermediate regime (10–100 s) with an exponent equal to 0.38 ± 0.01 .

Power Law fits, in the form $y = At^z$ were performed for each MSD curve in each of the two regimes (0–5 s) and (10–100 s). In the first regime the exponent α was found to vary between a minimum of 0.31 and a maximum of 1.43 and in the second regime between a minimum of 0.09 and a maximum of 0.46.

Simulations of chromatin dynamics³⁶ predict that the MSD of a diffusing chromatin fiber crosses over from a power law behavior with $\alpha = 0.75$ to one with $0.25 < \alpha < 0.5$. This is graphically illustrated by the dashed guides for the eye in Figure 4b, which display the slope of these limiting power law behaviors. Our results are in qualitative agreement with these simulated values, and they provide evidence that the observed motion of the petals is compatible with the diffusion of chromatin fibers.

The MSD analysis allows establishing a direct correlation between the overall mobility of individual petals and the elongation rate measured using the phasor analysis.

For most of the petals no obvious saturation of the MSD curve was observed at longer times, the most likely explanation being slow rotations of the transgene array itself on a timescale longer than a few hundred seconds. We therefore arbitrarily define R_{max} as the

extrapolation of the power law behavior observed in the 10–100 s regime at $t = 512$ s. Although strictly speaking this is not a radius of constraint, since no constrained motion is ultimately observed for most petals, R_{max} nonetheless provides an indication of the spatial range that can be explored by the petals on a timescale of approximately 10 minutes. The average $R_{\text{max}} = (5/2 * \text{MSD})^{0.5}$ extrapolated from the intermediate regime to $\tau = 512$ s) is about 210 nm, and the petals that display a lower overall mobility (small R_{max} values) appear to be elongating at a lower rate than the more mobile ones, as illustrated by the scatter plot reported in Figure 4c (Pearson $R = 0.52$, p -value = 0.008).

Further light can be shed on whether an active mechanism is indeed responsible for the motion of the transcribing petals. By cross-correlating the fluorescence intensity of each petal at each time to its angular displacement we found that changes in transcript output correlate to movements of the active transcription site. The diagrams in Figure 4d–e illustrate that the sign of the cross-correlation function in Figure 4e depends upon the direction of motion of the petal. The cross-correlation carpet (Figure 4f, normalized to 99% confidence bands calculated for pure diffusion of the petals) highlights the transition from negative to positive cross-correlation values, after a delay typically ranging from tens to hundreds of seconds. This observation is a strong indication that (i) there is a prevalent direction in the angular fluctuations of the petals (either clockwise or counterclockwise in the reference system of the laser orbit), and (ii) increasing fluorescence in the petal correlates with a directional movement for up to about 10 s, to be followed by a recoil of the petal in the other direction. It should be emphasized here that the cross-correlation analysis reported in Figure 4f highlights different information than the MSD analysis, and while the overall degree of chromatin movement extracted from the R_{max} analysis provides an indication for limiting long time scales, the cross-correlation indicates that directional movements occur with a specific delay with respect to maxima of transcriptional activity. This result can be reconciled only with the existence of a molecular mechanism driving the displacement of the active transcription site, possibly in a spring and ratchet mechanism³⁷.

This is consistent with the drastic reduction observed in the amplitude of the angular fluctuations upon energy starvation of the cells achieved using Sodium Azide and 2-DeoxyGlucose as illustrated in Supplementary Figure 9, although a local reduction of overall chromatin mobility could be a competing factor for this observation. ATP depletion was demonstrated to cause a change in nuclear substructure leading to a rearrangement of nuclear dense structures that affects intranuclear diffusion of mRNAs and may ultimately limit the diffusive behavior of chromatin itself.

Discussion

Here we have shown that we can follow continuously for up to hours and at an unprecedented ms temporal resolution both the transcriptional activity and spatial trajectory of identical active genes, simultaneously within the same cell. This is made possible by the peculiar, and previously underappreciated arrangement of active transcription sites in U2OS 263 cells: a corolla of active transcription regions surrounding the compact chromatin array.

Furthermore, our experimental strategy provides a time range going from minutes, which is the timescale of gene bursting, to seconds where we can detect the addition of individual coat protein on mRNA molecules following PolII elongation³⁸. This approach separates elongation from other kinetic processes taking place on longer timescales, such as splicing or mRNA 3' end processing. Fluorescence correlation analysis was recently employed to study transcription kinetics of individual long MDN1 genes in yeast using the MS2 analog system PP7, and an analytical polynomial-exponential model to fit the fluorescence ACF and extract PolII elongation rates was recently proposed²⁶. However, the main assumption used in the reported study, namely that the cassette containing the PP7 sequence

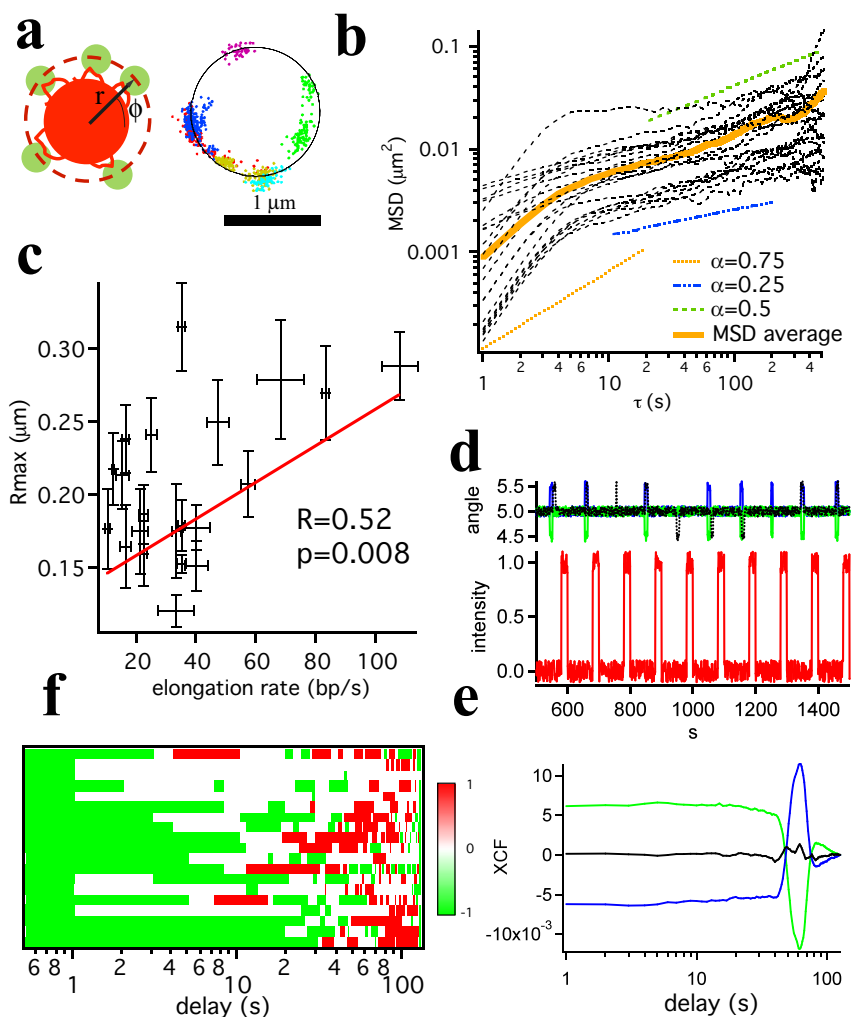


Figure 4 | Correlation between mRNA transcription kinetics and petal mobility. (a) The petals display sizable motion along the surface of the transgene array (left). Localized positions (using the Particle Tracker Mosaic⁴³ ImageJ Plugin) of the petals over time reveal that this motion is predominantly angular (indicated as ϕ in the figure). (b) MSD analysis of the angular (ϕ) displacement of the petals. Black dashed lines: experimental MSD of the petals. Orange line: average of experimental MSD. Guide for the eye: $\text{MSD} \propto t^{0.75}$ for time scales $< 5\text{--}10$ s (dotted orange line) and $\text{MSD} \propto t^{0.25-0.5}$ (dashed-dotted blue and green lines) between $10\text{--}100$ s. (c) Scatter plot of the confinement radius R_{max} (calculated extrapolating the $10\text{--}100$ s MSD power law fits to 512 s) against the elongation rate measured for each petal. Superposed is a linear regression. Pearson correlation coefficient is $R = +0.52$ with a p -value = 0.008. (d) Simulated trace of intensity fluctuations (bottom) and angular (ϕ) displacement (top) of a petal for counterclockwise (blue trace), clockwise (green trace) and bidirectional (black trace) motion. (e) Calculated cross-correlation for each of the three cases. A peak in the cross-correlation function is present only if there is a predominant directional motion. (f) Binary map of cross-correlation of the fluorescence intensity and the angular (ϕ) displacement of the petals, calculated in 128 s time bins. Each line corresponds to a different experiment, and the sign of the cross-correlation amplitude is arranged in order to display negative values first. The average cross-correlation function measured for each petal is displayed (± 1) only if above the 99% confidence band for pure diffusion.

is experimentally placed either at the beginning or at the end of a long gene, is not applicable in general, and in particular to U2OS 263 cells, where more than 1 kb of DNA follows the MS2 cassette. Furthermore, the presence of multiple timescales in the intensity trace poses a limit to the applicability of conventional fluorescence correlation analysis.

Instead, we analyzed here the continuous time series using an original approach based on the use of the phasors of the intensity ACF function to fingerprint PolII elongation kinetics. The rates of elongation that we have obtained are in excellent agreement with elongation rates recently measured using biochemical assays. We also confirmed the previously reported large variability in elongation speeds, but this time in the same cell and at loci that are in close proximity ($\sim 1 \mu\text{m}$). In particular, we observed, as reported in Figure 3a, that different cells display a different degree of variance in the observed PolII elongation values but surprisingly, a sizable

contribution to this variability arises from differences between the elongation rates of PolII on distinct petals within the same array (Figure 3b). Although the relationship between expression level and copy number of multimerized transgene insertions has been addressed in the past²¹, transcription from repetitive sequences is not yet fully understood. Chromosome position effects have been invoked to explain the absence of a linear dependence of transcript to copy number for transgene insertions originating from plasmids in the absence of insulator sequences. Our method allowed us observing that multiple copies of the same gene within the tandem repeats of the U2OS 263 array display a markedly different kinetic behavior, in a context that allows ruling out extrinsic sources of variance, such as cell to cell differences, cell-wide abundance of transcription factors or PolII.

We then asked the question whether there is any correlation between the observed variability of transcription kinetics and the

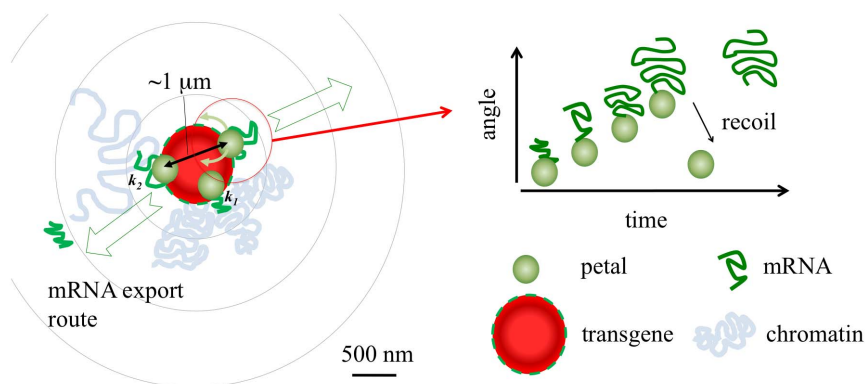


Figure 5 | Model of transcription and mRNA export from multimer copies of the same locus within a transgene array. Transcription is observed to occur only on the surface of the transgene array, in distinct and mobile structures named petals. Each petal undergoes different transcription kinetics (elongation rates k_1 , k_2) and releases mRNA molecules in the nucleoplasm with characteristic times. The most mobile petals display higher elongation kinetics and each petal moves along a preferential direction as the amount of labeled mRNA increases, and recoils after a 10–100 s delay.

local chromatin mobility, as reflected by the petal angular trajectories. Although investigations on the dynamics of fluorescently labeled loci date back to the 1997 work by Sedat and coworkers³⁹, only a handful of recent papers have addressed the relationship between transcription and chromatin mobility (reviewed by Dion and Gasser⁶). Notably, Dion *et al.* did not observe a consistent correlation between enhanced chromatin movement and transcription activation in yeast. Although mammalian cell lines such as the U2OS 263 systems have been available for over ten years, only recently Khanna *et al.*⁸ have reported a correlation between HSP70 long range motion and subsequent transcriptional activation. Our analysis of the MSD of the petals trajectories revealed the presence of an active molecular mechanism that, together with diffusion, drives their motion, supporting the notion that the petals originate from the transcription of chromatin loci looping out of the array. Petals that explore a larger area on the surface of the array are also those that display a larger average elongation rate (Figure 4c). Taken together with the observed reduction of petal oscillations upon energy depletion (Supplementary Figure 9) these measurements point to the role that active, molecular processes must play in determining the motion of the petals. This is confirmed by the cross-correlation between transcriptional activity and angular trajectory of the petals reported in Figure 4f, which provides immediate evidence of a non-diffusive angular motion of an active locus during transcription.

In summary, we introduced a method that allowed monitoring at high spatial and temporal resolution both the kinetics and the physical displacement of multiple transcription sites simultaneously within a model cell line. As illustrated in Figure 5 our observations demonstrated that elongation kinetics between multimerized copies of a transgene display a large intracellular variance, ultimately affected by factors dependent upon the local microenvironment surrounding otherwise identical genes, rather than being modulated by a more general cell to cell variability. These factors may include the local chromatin mobility and conformation, tuning the accessibility of each locus to transcription factors, PolII and other proteins involved in the transcription process. We also observed that transcription sites that can explore a larger region of space within the nucleus display the higher PolII elongation rates, and moreover their motion occurs in synchrony (cross-correlated) to the transcriptional activity.

Future experiments should compare the transcription kinetics of tandem repeats, which we explored here, to those of individual endogenous loci. In particular, genome editing techniques such as CRISPR/Cas9 will enable not only to fluorescently tag endogenous loci⁴⁰, but also to label individual mRNAs⁴¹ and insert fluorescent reporters allowing monitoring the variance of transcription rates and downstream expression at the single gene, single cell level.

Further experiments will be also necessary to elucidate the molecular link between transcription and the movements of the active loci, in order to determine whether these movements are originated by the direct action of PolII or by downstream steps in the transcription chain, such as splicing and mRNA 3' end processing. The current implementation of orbital tracking that allowed us monitoring transcription kinetics *in vivo*, is amenable to be extended to other high temporal resolution studies of chromatin related processes that involve the *in-vivo* activity of an enzyme, such as monitoring binding and unbinding rates of transcription factors and other chromatin binding proteins, such as those involved in DNA damage response.

Methods

Microscopy Setup and Tracking Parameters. Microscopy experiments were performed on a Zeiss Axiovert 135 microscope frame, modified for orbital particle tracking as discussed in the Supplementary Materials and illustrated in Supplementary Figure 10. Using 2-photon excitation from a MaiTai Ti:Sa (Spectra Physics) pulsed IR laser source we employed a single wavelength to track the fluorescence center of mass of the chromatin gene array as well as to excite the EGFP fused to the MS2 coat protein that decorates each newly synthesized mRNA. This strategy frees us from any requirement of alignment of the excitation beams. Excitation at 910 nm corresponds to the peak absorbance of the 2-photon spectrum of EGFP and is also able to excite, although with a 10-fold lower efficiency, the mCherry-labeled locus⁴².

During 3D particle tracking the laser beam has to be driven in a closed orbit around the particle. The voltage applied to the scanners was such as to yield a pixel size of 65 nm. A typical radius for the circular orbit was set at 10 pixels. The half-distance between the upper and lower orbit was set at 15 pixels, and we typically performed four orbits above and four orbits below the particle before calculating its x , y , z position using the angular and axial modulation values. Dwell time per pixel was 256 μ s, yielding a total time per orbit of 16.384 ms. Output powers below 2 mW at the sample plane were employed to minimize phototoxic effects and photo-damage to the living cells.

Cell culture and transfection. U2OS 263 cells (a kind gift of Dr. Xavier Darzacq) were cultured in low glucose DMEM (Life Technologies) supplemented with 10% Tet Approved FBS (ClonTech) and 1% Pen/Strep. Cells were imaged under Leibovitz medium (Life Technologies) supplemented with 10% Tet approved FBS. Cells were transfected using X-treme gene solution (Roche), using an X-treme gene to DNA ratio of 8 μ l: 2 μ g according to the manufacturer's instructions and after testing for optimal transfection conditions. Cells were imaged 12 h to 48 h after transfection. Transcription was induced perfusing the cell wells with 10 μ g/ml Doxycycline (Sigma) solution. pTet-On vector was purchased from ClonTech, MS2-EGFP plasmid was obtained from Addgene (plasmid 27121) and mCherry-Lac Repressor was also obtained from Addgene (plasmid 18985). ActinomycinD (Sigma) was used at a concentration of 10 μ g/ml. Transfection was also performed using a Gibco Cell Porator Electroporation system, according to the manufacturer's instructions and with the following parameters (180 V, 1180 μ F, low Ohm), obtaining similar results to chemical transfection.

Phasor Analysis. The phasor analysis of autocorrelation curves as the one displayed in Supplementary Figure 4c is performed according to the standard equations introduced in the past for lifetime or spectral analysis^{28,29,31}. For each autocorrelation



curve described by the function $F(t)$ a point on the unit circle in the complex plane is calculated using the S and G coordinates, according to Equation 1

$$S(\omega_1) = \frac{\int F(t) \sin(\omega_1 t) dt}{\int F(t) dt} \quad (\text{Equation 1})$$

$$G(\omega_1) = \frac{\int F(t) \cos(\omega_1 t) dt}{\int F(t) dt}$$

$\omega = \frac{1}{2N\Delta t}$ is the fundamental frequency and is determined by the temporal resolution Δt of our measurement and by the time bin used to calculate the ACF, typically 256 s yielding $N = 1024$. The angle ϕ of each phasor component is given by: $\phi = a \tan\left(\frac{S}{G}\right)$. All data analysis was performed using custom written IgorPro routines and SimFCS (Globals Software).

- Ardehali, M. B. & Lis, J. T. Tracking rates of transcription and splicing in vivo. *Nature structural & molecular biology* **16**, 1123–1124 (2009).
- Raj, A., Peskin, C. S., Tranchina, D., Vargas, D. Y. & Tyagi, S. Stochastic mRNA synthesis in mammalian cells. *PLoS Biol* **4**, e309 (2006).
- Vinuelas, J. *et al.* Quantifying the contribution of chromatin dynamics to stochastic gene expression reveals long, locus-dependent periods between transcriptional bursts. *BMC Biol* **11**, 15 (2013).
- Danko, C. G. *et al.* Signaling pathways differentially affect RNA polymerase II initiation, pausing, and elongation rate in cells. *Molecular cell* **50**, 212–222 (2013).
- Hocine, S., Raymond, P., Zenklusen, D., Chao, J. A. & Singer, R. H. Single-molecule analysis of gene expression using two-color RNA labeling in live yeast. *Nature methods* **10**, 119–121 (2013).
- Dion, V. & Gasser, S. M. Chromatin movement in the maintenance of genome stability. *Cell* **152**, 1355–1364 (2013).
- Neumann, F. R. *et al.* Targeted INO80 enhances subnuclear chromatin movement and ectopic homologous recombination. *Genes Dev* **26**, 369–383 (2012).
- Khanna, N., Hu, Y. & Belmont, A. S. HSP70 transgene directed motion to nuclear speckles facilitates heat shock activation. *Curr Biol* **24**, 1138–1144 (2014).
- Janicki, S. M. *et al.* From silencing to gene expression: real-time analysis in single cells. *Cell* **116**, 683–698 (2004).
- Belmont, A. S., Hu, Y., Sinclair, P. B., Wu, W., Bian, Q. & Kireev, I. Insights into interphase large-scale chromatin structure from analysis of engineered chromosome regions. *Cold Spring Harb Symp Quant Biol* **75**, 453–460 (2010).
- Tsukamoto, T. *et al.* Visualization of gene activity in living cells. *Nature cell biology* **2**, 871–878 (2000).
- Shanbhag, N. M., Rafalska-Metcalf, I. U., Balane-Bolivar, C., Janicki, S. M. & Greenberg, R. A. ATM-dependent chromatin changes silence transcription in cis to DNA double-strand breaks. *Cell* **141**, 970–981 (2010).
- Soutoglou, E. *et al.* Positional stability of single double-strand breaks in mammalian cells. *Nature cell biology* **9**, 675–682 (2007).
- Darzacq, X. *et al.* In vivo dynamics of RNA polymerase II transcription. *Nature structural & molecular biology* **14**, 796–806 (2007).
- Robinett, C. C. *et al.* In vivo localization of DNA sequences and visualization of large-scale chromatin organization using lac operator/repressor recognition. *The Journal of cell biology* **135**, 1685–1700 (1996).
- Bertrand, E. *et al.* Localization of ASH1 mRNA particles in living yeast. *Molecular cell* **2**, 437–445 (1998).
- Kis-Petikova, K. & Gratton, E. Distance measurement by circular scanning of the excitation beam in the two-photon microscope. *Microsc Res Tech* **63**, 34–49 (2004).
- Levi, V., Ruan, Q., Plutz, M., Belmont, A. S. & Gratton, E. Chromatin dynamics in interphase cells revealed by tracking in a two-photon excitation microscope. *Biophysical journal* **89**, 4275–4285 (2005).
- Levi, V., Ruan, Q. & Gratton, E. 3-D particle tracking in a two-photon microscope: application to the study of molecular dynamics in cells. *Biophysical journal* **88**, 2919–2928 (2005).
- Ries, J., Yu, S. R., Burkhardt, M., Brand, M. & Schwill, P. Modular scanning FCS quantifies receptor-ligand interactions in living multicellular organisms. *Nature methods* **6**, 643–645 (2009).
- Bian, Q. & Belmont, A. S. BAC TG-EMBED: one-step method for high-level, copy-number-dependent, position-independent transgene expression. *Nucleic acids research* **38**, e127 (2010).
- Digman, M. A. & Gratton, E. Imaging barriers to diffusion by pair correlation functions. *Biophysical journal* **97**, 665–673 (2009).
- Cardarelli, F. & Gratton, E. In vivo imaging of single-molecule translocation through nuclear pore complexes by pair correlation functions. *PLoS one* **5**, e10475 (2010).
- Chiu, C. L., Digman, M. A. & Gratton, E. Measuring actin flow in 3D cell protrusions. *Biophysical journal* **105**, 1746–1755 (2013).
- Hinde, E., Cardarelli, F., Digman, M. A. & Gratton, E. In vivo pair correlation analysis of EGFP intranuclear diffusion reveals DNA-dependent molecular flow.

Proceedings of the National Academy of Sciences of the United States of America **107**, 16560–16565 (2010).

- Larson, D. R., Zenklusen, D., Wu, B., Chao, J. A. & Singer, R. H. Real-time observation of transcription initiation and elongation on an endogenous yeast gene. *Science (New York, NY)* **332**, 475–478 (2011).
- Coulon, A. *et al.* Kinetic competition during the transcription cycle results in stochastic RNA processing. *eLife* **3**, e03939 (2014).
- Redford, G. I. & Clegg, R. M. Polar plot representation for frequency-domain analysis of fluorescence lifetimes. *J Fluoresc* **15**, 805–815 (2005).
- Digman, M. A., Caiolfa, V. R., Zama, M. & Gratton, E. The phasor approach to fluorescence lifetime imaging analysis. *Biophysical journal* **94**, L14–16 (2008).
- Fereidouni, F., Bader, A. N. & Gerritsen, H. C. Spectral phasor analysis allows rapid and reliable unmixing of fluorescence microscopy spectral images. *Opt Express* **20**, 12729–12741 (2012).
- Andrews, L. M., Jones, M. R., Digman, M. A. & Gratton, E. Spectral phasor analysis of Pyronin Y labeled RNA microenvironments in living cells. *Biomed Opt Express* **4**, 171–177 (2013).
- Ranjit, S., Lanzano, L. & Gratton, E. Mapping Diffusion in a Living Cell using the Phasor Approach. *Biophysical journal* **106**, 202a (2013).
- Yunger, S., Rosenfeld, L., Garini, Y. & Shav-Tal, Y. Single-allele analysis of transcription kinetics in living mammalian cells. *Nature methods* **7**, 631–633 (2010).
- Maiuri, P. *et al.* Fast transcription rates of RNA polymerase II in human cells. *EMBO Rep* **12**, 1280–1285 (2011).
- Seeber, A., Dion, V. & Gasser, S. M. Checkpoint kinases and the INO80 nucleosome remodeling complex enhance global chromatin mobility in response to DNA damage. *Genes Dev* **27**, 1999–2008 (2013).
- Rosa, A. & Everaers, R. Structure and dynamics of interphase chromosomes. *PLoS Comput Biol* **4**, e1000153 (2008).
- Vazquez, J., Belmont, A. S. & Sedat, J. W. Multiple regimes of constrained chromosome motion are regulated in the interphase Drosophila nucleus. *Curr Biol* **11**, 1227–1239 (2001).
- Coulon, A., Chow, C. C., Singer, R. H. & Larson, D. R. Eukaryotic transcriptional dynamics: from single molecules to cell populations. *Nature reviews* **14**, 572–584 (2013).
- Marshall, W. F. *et al.* Interphase chromosomes undergo constrained diffusional motion in living cells. *Curr Biol* **7**, 930–939 (1997).
- Chen, B. *et al.* Dynamic imaging of genomic loci in living human cells by an optimized CRISPR/Cas system. *Cell* **155**, 1479–1491 (2013).
- O'Connell, M. R. *et al.* Programmable RNA recognition and cleavage by CRISPR/Cas9. *Nature* **516**, 263–266 (2014).
- Drobizhev, M., Makarov, N. S., Tillo, S. E., Hughes, T. E. & Rebane, A. Two-photon absorption properties of fluorescent proteins. *Nature methods* **8**, 393–399 (2011).
- Sbalzarini, I. F. & Koumoutsakos, P. Feature point tracking and trajectory analysis for video imaging in cell biology. *J Struct Biol* **151**, 182–195 (2005).

Acknowledgments

Work supported in part by NIH grants P50 GM076516 and P41 GM103540. We would like to thank all the LFD staff for support, in particular A. Dvornikov for support with mechanical machining and H. Chen for useful discussion on electronics and data acquisition. We would like to thank Dr. Kyoko Yokomori and Dr. Marco Marcia for critical comments on the ms. We would like to acknowledge X. Darzacq for kindly providing us with the U2OS 263 cell line.

Author contributions

E.G. and P.A. designed the experiments. P.A. performed the experiments. P.A. and E.G. analyzed the data. P.A. and E.G. wrote the manuscript.

Additional information

Supplementary information accompanies this paper at <http://www.nature.com/scientificreports>

Competing financial interests: The authors declare no competing financial interests.

How to cite this article: Annibale, P. & Gratton, E. Single cell visualization of transcription kinetics variance of highly mobile identical genes using 3D nanoimaging. *Sci. Rep.* **5**, 9258; DOI:10.1038/srep09258 (2015).



This work is licensed under a Creative Commons Attribution 4.0 International License. The images or other third party material in this article are included in the article's Creative Commons license, unless indicated otherwise in the credit line; if the material is not included under the Creative Commons license, users will need to obtain permission from the license holder in order to reproduce the material. To view a copy of this license, visit <http://creativecommons.org/licenses/by/4.0/>